

IEEE 802.11g/b 54Mbps WLAN USB2.0 Adapter



Date of Issue: November. 4, 2003

Technical Support

The firmware version of the IEEE 802.11g Wireless LAN USB card is displayed on the utility **About** window. Users could download the most recent software version from the supplier's web site or refer to the selling contact for the latest software information. If you have difficulty resolving the problem while installing or using the IEEE 802.11g Wireless LAN USB card, please contact the supplier for support.

About This Manual

IEEE 802.11g Wireless LAN USB card User Manual is first published on November, 2003. The manual includes procedures for the setup of the IEEE 802.11g Wireless LAN USB card under Windows XP, Windows 2000, Windows 98SE or Windows ME. Take a moment to read through this manual and familiarize yourself with wireless technology.

FCC Information

This device, IEEE 802.11g Wireless LAN USB card, complies with Part 15 of the FCC Rules. Operation is subject to the following two conditions: (1) this device may not cause harmful interference, and (2) this device must accept any interference received; including interference that may cause undesired operation.

Federal Communications Commission (FCC) Statement

This Equipment has been tested and found to comply with the limits for a Class B digital device, pursuant to Part 15 of the FCC rules. These limits are designed to provide reasonable protection against harmful interference in a residential installation. This equipment generates, uses and can radiate radio frequency energy and, if not installed and used in accordance with the instructions, may cause harmful interference to radio communications. However, there is no guarantee that interference will not occur in a particular installation. If this equipment does cause harmful interference to radio or television reception, which can be determined by turning the equipment off and on, the user is encouraged to try to correct the interference by one or more of the following measures:

- Reorient or relocate the receiving antenna.
- Increase the separation between the equipment and receiver.
- Connect the equipment into an outlet on a circuit different from that to which the receiver is connected.
- Consult the dealer or an experienced radio/TV technician for help.

Warning: Changes or modifications to this unit not expressly approved by the party responsible for compliance could void the user authority to operate the equipment.

Tested to comply with FCC standard. FOR HOME OR OFFICE USE.



FCC RF Radiation Exposure Statement:

1. This equipment complies with FCC RF radiation exposure limits set forth for an uncontrolled environment, under 47 CFR 2.1093 paragraph (d)(2).
2. This Transmitter must not be co-located or operating in conjunction with any other antenna or transmitter.

FCC Radiation Exposure Statement:

This equipment complies with FCC radiation exposure limits set forth for an uncontrolled environment. End users must follow the specific operating instructions for satisfying RF exposure compliance. This transmitter must not be co-located or operating in conjunction with any other antenna or transmitter.

Z-Com. declare that XG-702B (IEEE 802.11b/g 54Mbps WLAN USB2.0 Adapter) is limited in CH1~CH11 by specified firmware controlled in U.S.A.

Table of Contents

Chapter 1 About IEEE 802.11g Wireless LAN USB card.....	1
<i>1-1 Features and Benefits.....</i>	<i>1</i>
<i>1-2 Applications.....</i>	<i>2</i>
<i>1-3 Product Kit.....</i>	<i>3</i>
<i>1-4 About IEEE 802.11g Wireless LAN USB card LED Indicators</i>	<i>3</i>
Chapter 2 Getting Started.....	5
<i>2-1 Before Installation.....</i>	<i>5</i>
<i>2-2 Insert the IEEE 802.11g Wireless LAN USB card.....</i>	<i>6</i>
Chapter 3 Install Driver for Windows	7
<i>3-1 Set up IEEE 802.11g Wireless LAN USB card for Windows XP</i>	<i>7</i>
<i>3-2 Set up IEEE 802.11g Wireless LAN USB card for Windows 2000.....</i>	<i>13</i>
<i>3-3 Set up IEEE 802.11g Wireless LAN USB card for Windows 98SE/ ME16</i>	
Chapter 4 Configure the IEEE 802.11g Wireless LAN USB card	21
<i>4-1 Install the WLAN Utility.....</i>	<i>21</i>
<i>4-2 Use the WLAN Utility.....</i>	<i>23</i>
Limited Warranty.....	31

About IEEE 802.11g Wireless LAN USB card **1**

The IEEE 802.11g Wireless LAN USB card is a standard USB adapter that fits into any standard USB 2.0 and 1.1 slot in a notebook computer. Its 54Mbps data rate gives equivalent Ethernet speed to access corporate network or the Internet in a wireless environment. When installed, IEEE 802.11g Wireless LAN USB card is able to communicate with any 802.11/b and 802.11g compliant products.

1-1 Features and Benefits

1. Fully IEEE 802.11g compatible.
2. Direct Sequence Spread Spectrum (DSSS) technology provides robust, interference-resistant and secure wireless connection.
3. Supports 1, 2, 5.5 and 11 Mbps and up to 54Mbps data rate.
4. Working range up to 800 ft. in an open environment.
5. Seamless connectivity to wired Ethernet and PC network LAN's augments existing networks quickly and easily.
6. Greater flexibility to locate or move networked PCs.
7. Wireless connection without the cost of cabling.
8. Easy to install and user friendly, just Plug and Play.
9. Low power consumption.
10. Supports a variety of operating systems (Win98SE/ME/2000/XP)
11. 64-bit and 128-bits WEP encryption capable.
12. Provides Window-based Diagnostic Tools, most notably, Site Survey, Link Quality Test and Access Point Browser.

1-2 Applications

IEEE 802.11g Wireless LAN USB card offers a fast, reliable, cost-effective solution for wireless client access to the network in applications like these:

1. Remote access to corporate network information

E-mail, file transfer and terminal emulation.

2. Difficult-to-wire environments

Historical or old buildings, asbestos installations, and open area where wiring is difficult to deploy.

3. Frequently changing environments

Retailers, manufacturers and those who frequently rearrange the workplace and change location.

4. Temporary LANs for special projects or peak time

- Trade shows, exhibitions and construction sites where a temporary network will be practical.
- Retailers, airline and shipping companies need additional workstations during peak period.
- Auditors requiring workgroups at customer sites.

5. Access to database for mobile workers

Doctors, nurses, retailers, accessing their database while being mobile in the hospital, retail store or office campus.

6. SOHO (Small Office and Home Office) users

SOHO users need easy and quick installation of a small computer network.

7. High security connection

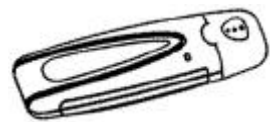
The secure wireless network can be installed quickly and provide flexibility. (Please refer to page 24 for encryption configuration.)

1-3 Product Kit

IEEE 802.11g Wireless LAN USB card comes with the following items. Please go through each item below. If any of listed items appears to be damaged or missing, please contact your local dealer.

IEEE 802.11g Wireless LAN USB card

- IEEE 802.11g Wireless LAN USB card..... x 1



- USB Cable..... x1
- USB card Software and Documentation CD..... x 1
- USB card Quick Start Guide.....x 1



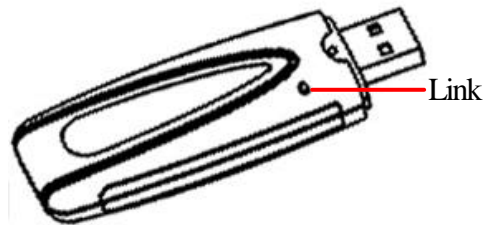
1-4 About IEEE 802.11g Wireless LAN USB card LED

Indicators

The IEEE 802.11g Wireless LAN USB card has one LED indicators. The behavior of the indicators is described as below:

Link LED

- Solid Green – Connecting to the Access Point or Ad-Hoc wireless workstation and transmitting data.
- Blinking Green – Before connecting to the Access Point or Ad-Hoc wireless workstation.



Getting Started

This chapter describes the instructions that guide you through the proper installation of your IEEE 802.11g Wireless LAN USB card for the Windows XP/2000/ME/98SE operating systems.

The complete installation of the IEEE 802.11g Wireless LAN USB card consists of the following steps:

STEP 1: Insert your IEEE 802.11g Wireless LAN USB card into your notebook.

STEP 2: Install the corresponding driver and utility.

STEP 3: Set basic settings.

STEP 4: Finish Installation.

2-1 Before Installation

In addition to the items shipped with the client adapter, you will also need the following in order to install the adapter:

1. A computer equipped with a USB slot, and a USB card and socket services compliant with revision 1.1 and 2.0 of the USB specification.
2. Windows XP/2000/98SE/ME (with a Windows installation CD-ROM, diskettes for use during installation)
3. Minimum 5 Mbps free disk space for installing driver and utility program.

2-2 Insert the IEEE 802.11g Wireless LAN USB card

To install the IEEE 802.11g Wireless LAN USB card, please do the following:

1. Find an available USB slot on your computer.
2. Insert the IEEE 802.11g Wireless LAN USB card, with its label facing up, into the USB slot on your computer.



CAUTION: Do not force the client adapter into the slot. Forcing it will damage both the client adapter and the slot. If the client adapter does not go in easily, remove the card and reinsert it.

Install Driver for Windows

This section describes the installation of the IEEE 802.11g Wireless LAN USB card driver for the Windows 98SE/ME/2000 and Windows XP operating systems. The installation procedures for Windows XP refer to **3-1 Set up IEEE 802.11g Wireless LAN USB card for Windows XP**; for Windows 2000 please see **3-2 Set up IEEE 802.11g Wireless LAN USB card for Windows 2000**; for Windows 98SE/ME refer to **3-3 Set up IEEE 802.11g Wireless LAN USB card for Windows 98SE/ME**.



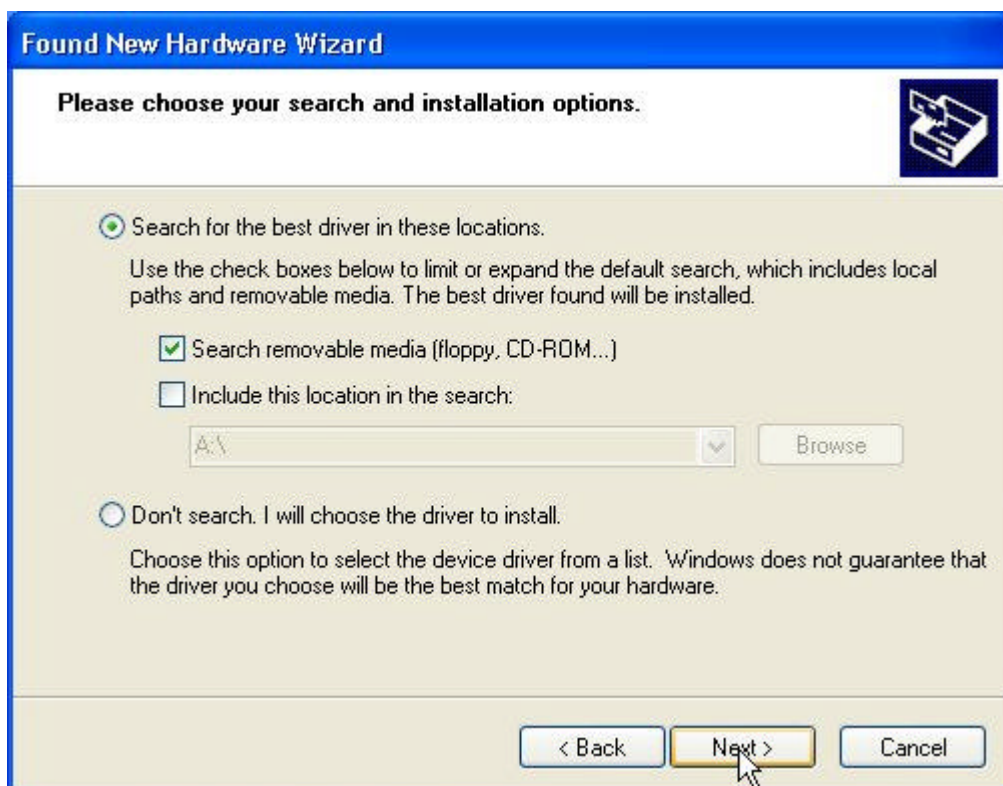
Note: Before you start the installation, you are advised to keep the Windows CD-ROM in case you might need certain system files.

3-1 Set up IEEE 802.11g Wireless LAN USB card for Windows XP

Step 1: After inserting the IEEE 802.11g Wireless LAN USB card into the USB slot on your notebook, the Windows will auto-detect the IEEE 802.11g Wireless LAN USB card and a “**Found New Hardware Wizard**” window will show up. Select “**Install from a list or specific (Advanced)**” to install the driver.



Step 2: Insert the Product CD-ROM into the CD-ROM drive. Check the “**Search removable media (floppy, CD-ROM...)**” check box and click on **Next** to install the driver.



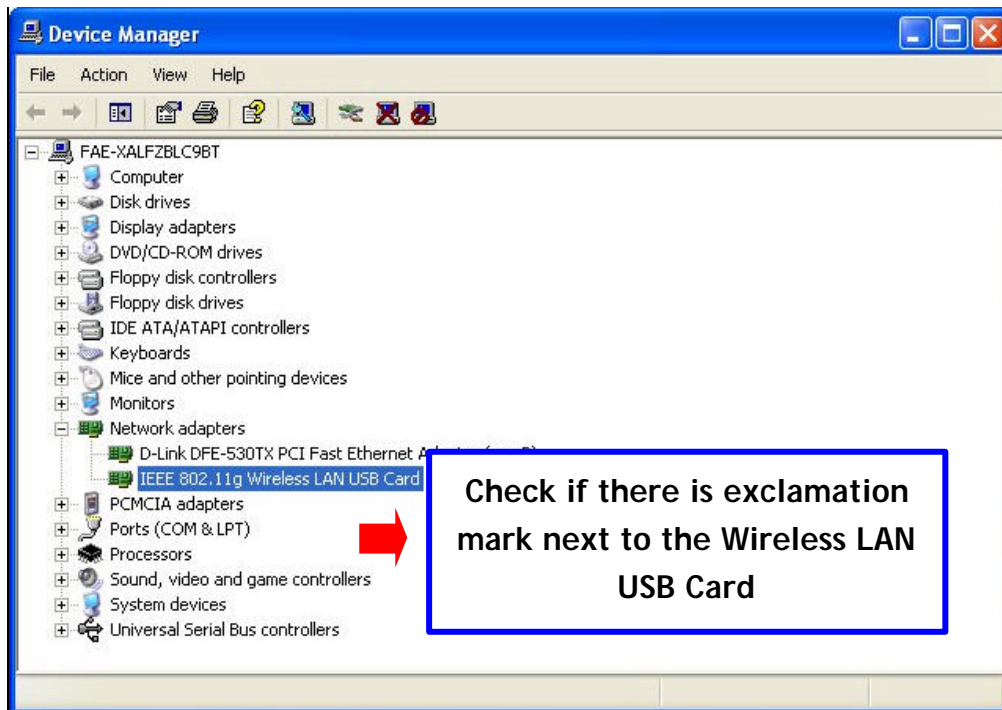
Step 3: The windows will find “**IEEE 802.11g Wireless LAN USB card**” and start copying corresponding files into the system. Click on **Next** to continue.



Step 4: Click **Finish** to complete the installation.



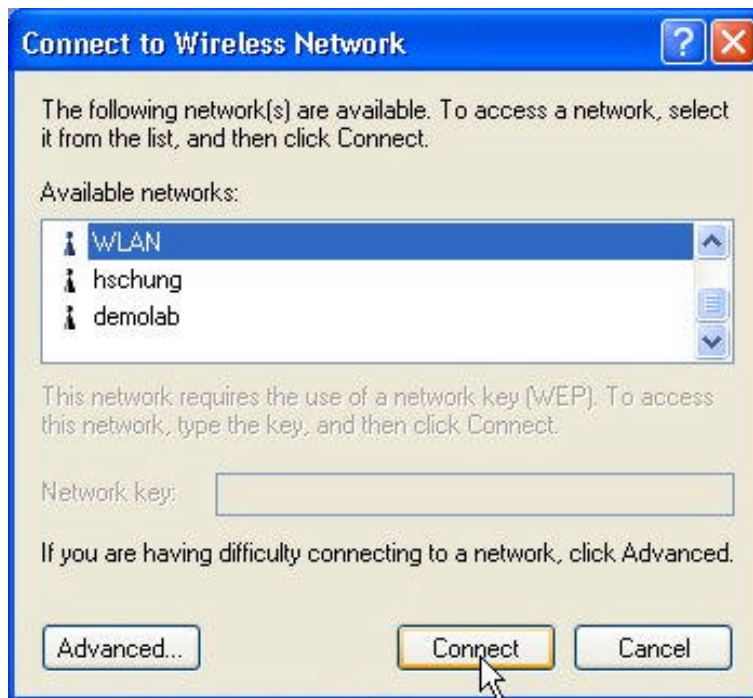
Step 5: Right click ‘**My Computer**’ from **Start**, select **Properties**, go to the **Hardware** tab and click the **Device Manager** button to see if any exclamation mark appears next to the **Network Adapter/IEEE 802.11g Wireless LAN USB card**. If no, your IEEE 802.11g Wireless LAN USB card is working well.



After installing the IEEE 802.11g Wireless LAN USB card, the Windows XP will display a “Wireless Network Connection # ” message.

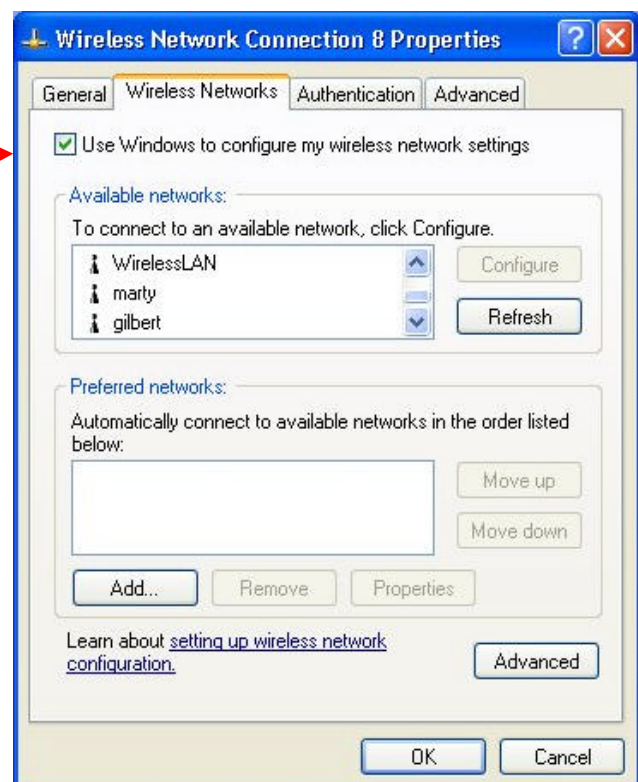


Click on the message and the “*Automatic Wireless Network Configuration*” will then appear automatically. You may click on **Connect** button to allow users to connect to an available wireless infrastructure network (Access Point). You may also click the **Advanced** button to make advanced configuration for the Wireless LAN PC Card, shown as below.



For more information on using the automatic wireless network configuration please refer to Windows XP **Help** file.

Warning: You must choose one way to configure Wireless LAN PC Card either of using our WLAN Utility by un-checking this check box or using Windows XP *Automatic Wireless Network Configuration* first by checking this check box.



However, the WLAN Utility, which comes with the IEEE 802.11g Wireless LAN USB card, provides you more tools to configure the IEEE 802.11g Wireless LAN USB card and monitor the wireless connection. For more information on installing and using the WLAN utility, please refer to the following sections “*Installation of the WLAN Utility*” and “*Usage of the WLAN Utility*”.



Note: To use the WLAN utility under Windows XP, you need to disable the *Automatic Wireless Network Configuration* first. Steps are described as follows:

- Right click the **Network Connections** icon. Select **Properties**.
- Go to the **Wireless Networks** tab.
- Uncheck the ‘**Use Windows to configure my wireless network settings**’ check box and click the **OK** button (see the above picture).

3-2 Set up IEEE 802.11g Wireless LAN USB card for Windows 2000

Step 1: After inserting the IEEE 802.11g Wireless LAN USB card into the USB slot on your computer, Windows will auto-detect the IEEE 802.11g Wireless LAN USB card.



Step 2: A 'Found New Hardware Wizard' window shows up. Click **Next** to proceed.



Step 3: Select “Search for a suitable driver for my device (recommended)”.



Step 4: Insert the Product CD-ROM into the CD-ROM drive. Specify the location where the driver is placed. Click on **Next** to install the driver.



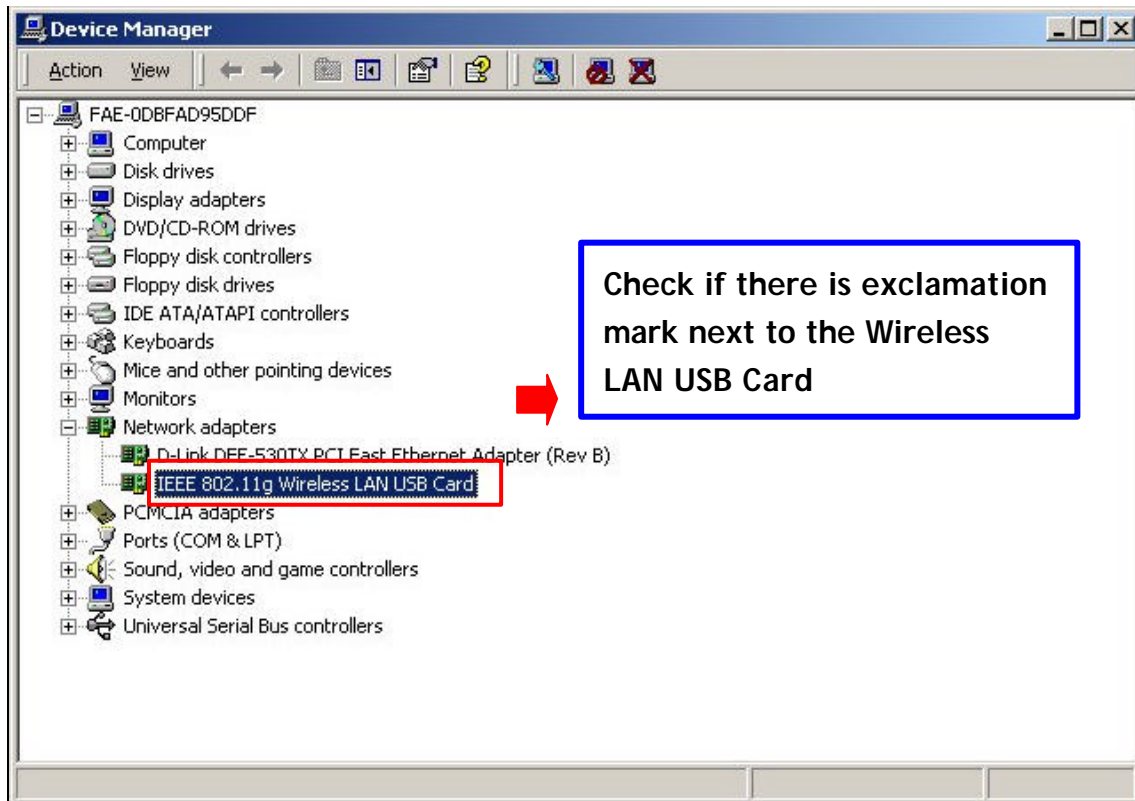
Step 5: The windows will find “USB Device”. Click on **Next** to continue.



Step 6: Click **Finish** to complete the installation.



Step 7: Open **Control Panel/System/Device Manager**, and check **Network Adapters** to see if exclamation mark appears. If no, your IEEE 802.11g Wireless LAN USB card is working well.



3-3 Set up IEEE 802.11g Wireless LAN USB card for Windows 98SE/ ME

Step 1: After inserting the IEEE 802.11g Wireless LAN USB card into the USB slot on your computer, Windows will auto-detect new hardware and will display an “**Add New Hardware Wizard**” window. Click **Next** to continue.



Step 2: Select “Search for the best driver for your device (Recommended)” and click **Next** to proceed.



Step 3: Insert the Product CD-ROM into the CD-ROM drive. Select the “**CD-ROM drive**” check box and click on **Next** to install the driver.



Step 4: The Windows will find “**IEEE 802.11g Wireless LAN USB card**”. Click **Next** to continue.



Step 5: Once the [Please insert the disk labeled “Windows 98SE/ME CD-ROM”, and then click OK] window appears, enter the path corresponding to the appropriate drives and click **OK**. Usually these files can be found at C:Windows or C:Windows\system.



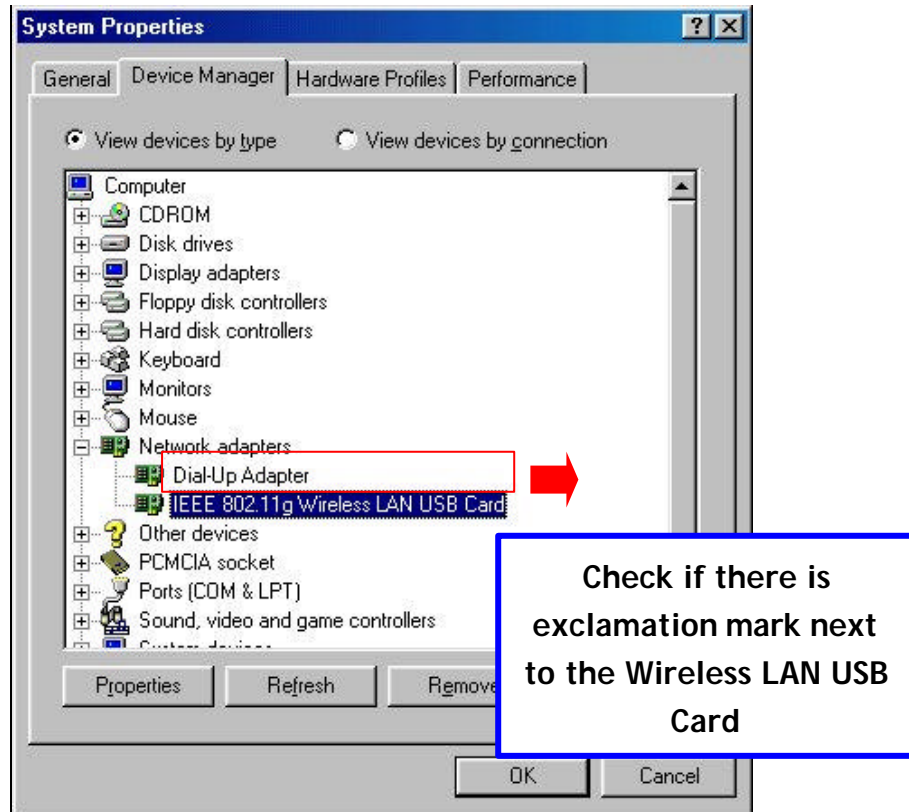
Step 6: Click **Finish** to complete the software installation.



Step 7: Restart the computer.



Step 8: Open **Control Panel/System/Device Manager**, and check **Network Adapters** to see if exclamation mark appears next to the IEEE 802.11g Wireless LAN USB card. If no, your IEEE 802.11g Wireless LAN USB card is working well.



4

Configure the IEEE 802.11g Wireless LAN USB card

This chapter gives you assistance with detailed configuration for the IEEE 802.11g Wireless LAN USB card under Windows XP/2000/98SE/ME.


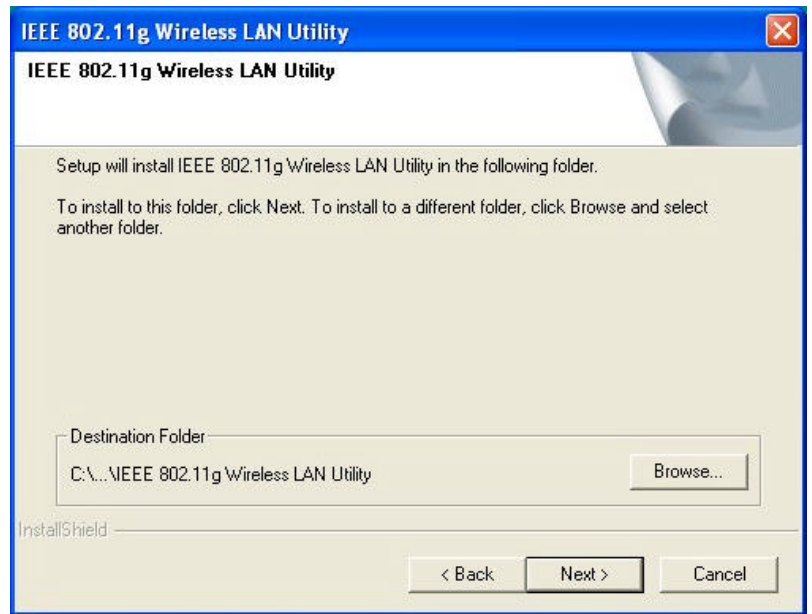
4-1 Install the WLAN Utility

To install the WLAN Utility, follow these steps:

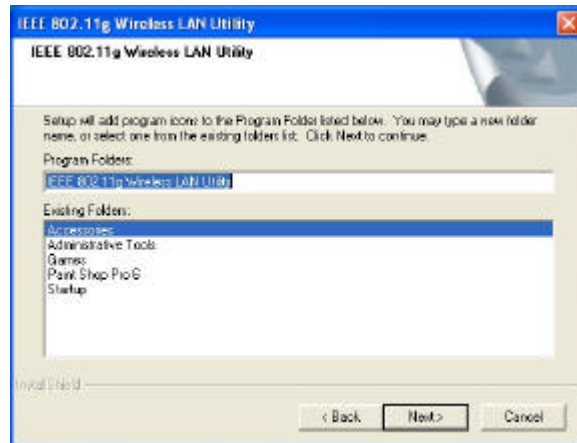
Step 1: Insert the Product CD-ROM.

Step 2: Go to the **utility** folder and run **setup.exe**.

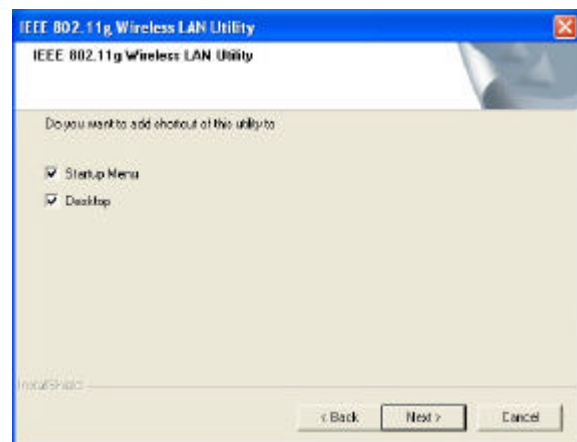
Step 3: The InstallShield Wizard will show up and guide you through the rest of the setup process.

<p><i>Run the Setup Utility</i></p>	
<p><i>Choose Destination Location and click Next to continue.</i></p>	

*Select a program folder and click **Next**.*



You may add a shortcut in the startup folder as desired.



Upon completion, go to **Program Files** and run the WLAN Utility and its icon will appear in the **System Tray** in the bottom right corner of your task bar. Clicking on the icon will open the configuration window. When you minimize the window, the system tray icon will be loaded in the System Tray again.



The color behind the system tray icon indicates the link status:



Blue indicates a good or excellent link.



Yellow indicates a usable but weak link.



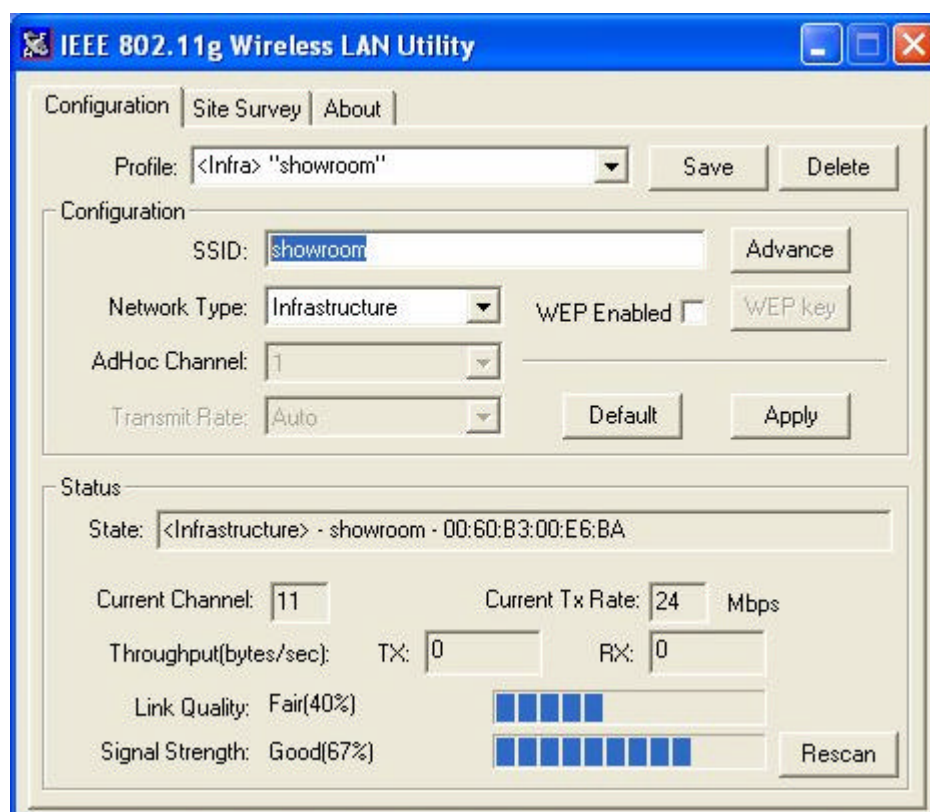
Red indicates no or very poor link quality. When you minimize the window, the system tray icon will be loaded in the **System Tray** again.

4-2 Use the WLAN Utility

The WLAN Utility enables you to make configuration changes and perform user-level diagnostics on your IEEE 802.11g Wireless LAN USB card in the Windows XP/2000/98SE/ME operating system environments. The WLAN Utility consists of window with 5 items for you to monitor and configure the IEEE 802.11g Wireless LAN USB card: **Configuration**, **Site Survey**, and **About**.

Configuration:

The **Configuration** item allows you to modify the configuration parameters for the IEEE 802.11g Wireless LAN USB card such as **Profile**, **Network Type**, **Ad-Hoc Channel**, **Transmit Rate (TBD)**, **ESSID**, **WEP**, **RTS/CTS**, **Fragment Threshold**, and **Power Save** mode. Furthermore, you may monitor the current status of the IEEE 802.11g Wireless LAN USB card such as **State**, **Current Channel**, **Current Tx Rate**, **Throughput**, **Link Quality** and **Signal Strength**.



Profile

The **Profile** field allows you to set values for all parameters by selecting a previously defined profile. To create the profile, go to the **Profile** field, type a profile name and set the corresponding parameters. If one of the profiles is no longer used, you may remove it by clicking the **Delete** button. After changing parameters, save the profile and click the **Apply** button to take effect. You can have multiple profiles and modify the profile at any time.

Network Type

There are 2 network types for the IEEE 802.11g Wireless LAN USB card to operate. If you need to access company network or Internet via an Access Point, select “**Infrastructure**”. To set up a group of wireless stations for file and printer sharing, select “**AdHoc**” (without Access Point). For standard **802.11 AdHoc**, the same ESS ID is required to the wireless stations, you may set wireless stations with the same channel as well.

ESSID

The ESS ID is the unique ID used by Access Points and stations to identify a wireless LAN. Wireless clients associating to any Access Point must have the same ESSID. The default setting is ANY, which allows your IEEE 802.11g Wireless LAN USB card to automatically associate to any Access Point (Infrastructure mode) in the vicinity of your wireless adapter. Alternatively, you may check the **ESS ID** check box to specify the ESS ID. It will then attempt to associate with Access Points or stations with the same ESS ID. The ESS ID can be set up to *32 characters* and is case sensitive.

Transmit Rate (TBD)

The IEEE 802.11g Wireless LAN USB card provides various data rate options for you to select. Data rates options include **Fully Auto**, **1 or 2 Mb**, **5.5 Mb**, **11 Mb** and **up to 54Mb** in most networking scenarios, you will see that the factory-set default “**Fully Auto**” will prove the most efficient. This setting will allow your IEEE 802.11g Wireless LAN USB card to operate at the maximum data rate. When the communications quality drops below a certain level, the PC Card will automatically switch to a lower data rate. Transmission at lower data speeds are usually more reliable. However, when the communications quality improves again, the IEEE 802.11g Wireless LAN USB card will gradually increase the data rate again, until it has reached the highest available transmit rate.

WEP

To prevent unauthorized wireless stations from accessing data transmitted over the network, the WLAN Utility offers highly secure data encryption, known as WEP, making your data transmission over air more secure. To activate the WEP Encryption, check the **WEP Enabled** check box. An Encryption window will then appear. The instructions are as follows:

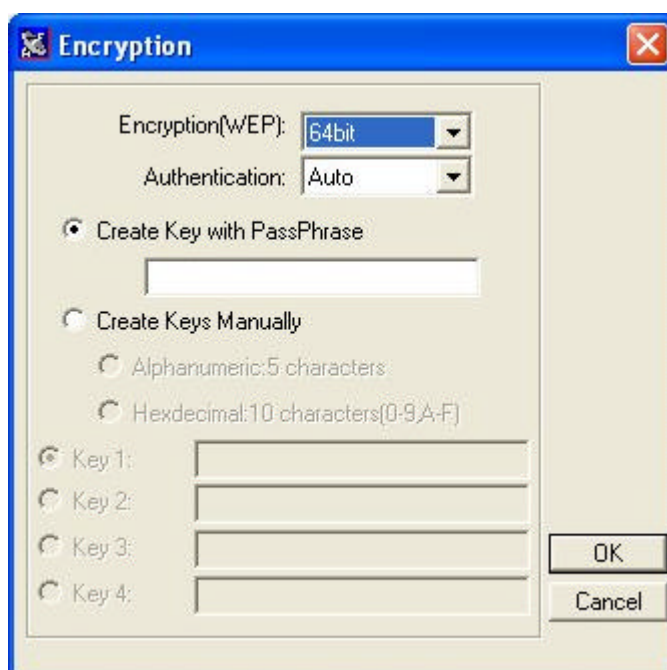
- Pull down the **Encryption (WEP)** menu and select either **64bit** or **128bit** encryption method.

- Specify the encryption keys. There are two methods to set the WEP keys, as described below:

Create Encryption Keys by Using a Passphrase

To create encryption keys by using a passphrase, click the **Create Key with Passphrase** check box and type a character string in the **Passphrase** field. As you type, the utility uses an algorithm to generate 4 keys automatically. Select either the **64bit** or **128bit** encryption first, and type a string in the **Create Key with Passphrase** field. Select one key from the 4 WEP keys and click **OK**. Then click the **Apply** button on the **Configuration** tab to make the setting take effect.

Warning: When *Create Key with Passphrase* is enabled, the wireless device's Key with PassPhrase must match the Key with PassPhrase used by the access point with which wireless device is planning to communicate.



Create Encryption Keys Using a Passphrase (128bit)

Create Encryption Keys Manually

You can also create encryption keys manually by clicking the **Create Keys Manually** check box.

For 64bit encryption you may choose:

- **Alphanumeric:** *5 characters* (case sensitive) ranging from “a-z”, “A-Z” and “0-9” (e.g. MyKey)
- **Hexadecimal:** *10 hexadecimal digits* in the range of “A-F”, “a-f” and “0-9” (e.g. 11AA22BB33)

For 128bit encryption you may choose:

- **Alphanumeric:** *13 characters* (case sensitive) ranging from “a-z”, “A-Z” and “0-9” (e.g. MyKey12345678)
- **Hexadecimal:** *26 hexadecimal digits* in the range of “A-F”, “a-f” and “0-9” (e.g. 00112233445566778899AABBCC).

After entering the WEP keys in the key field, select one key as active key, click the **OK** button and then click the **Apply** button on the **Configuration** tab to make the setting take effect.

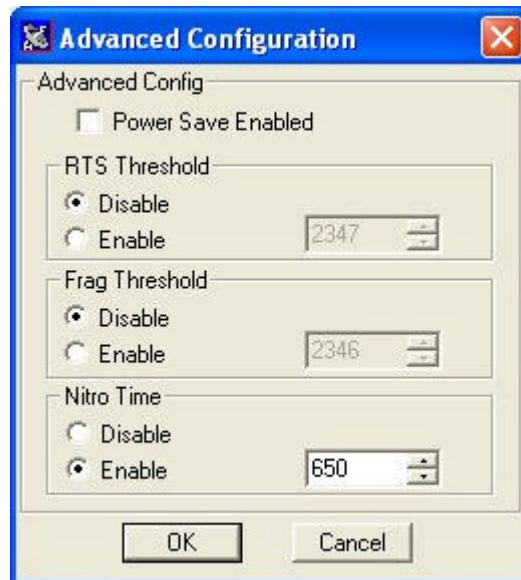


Warning: The WEP key must be set up exactly the same on the Wireless LAN stations as they are on the wireless Access Points. If you set “MyKey” for the Wireless LAN CF Card, the same WEP Key “MyKey” must be assigned to the Access Point or other stations.

Note: Different factories would have some different WEP setting. Therefore, before setting access point or PCC WEP, please refer to manual respectively.

Advance

The WLAN Utility also offers the advanced configuration for user to set the IEEE 802.11g Wireless LAN USB card under certain network environment. These advanced options include Power Management, RTS/CTS and Fragmentation Threshold. To enable the advanced configuration, go to the **Configuration** tab and click the **Advance** button.



Power Management

The Power Save option is designed to conserve battery life of your computer. When Power Save is enabled, your IEEE 802.11g Wireless LAN USB card will go into sleep mode to minimize power consumption.



Note: When power saving mode is enabled, the Access Points you use need to support power saving as well so that the communication can be established.

RTS Threshold

RTS Threshold is a mechanism implemented to prevent the “Hidden Node” problem. If the “Hidden Node” problem is an issue, please specify the packet size. The RTS mechanism will be activated if the data size exceeds the value you set. It is highly recommended that you set the value ranging from 0 to 1500. The default value is **Disable**.



Note: Enabling RTS Threshold would cause redundant network overhead that could negatively affect the throughput performance instead of providing a remedy.

Frag. Threshold

Fragmentation mechanism is used for improving the efficiency when high traffic flows along in the wireless network. If your IEEE 802.11g Wireless LAN USB card often transmit large files in wireless network, you can enable the Fragmentation Threshold by clicking the **Enable** button and the mechanism will split the packet. The value can be set from 256 to 2432. The default value is **Disable**.

Nitro time

This technology delivers throughput enhancement in both mixed and g-only networks. By introducing Intersil's packet bursting technology, administrators can easily enrich network performance and stability with higher speeds. 650 is a default value. By increasing the value, the IEEE 802.11g Wireless LAN USB card will be able to logically consume more bandwidth than legacy 11b product does.

Status:

The Status field on the **Configuration** menu provides the following information.

State: When operating in Infrastructure mode, this field shows the MAC address of the Access Point with which the IEEE 802.11g Wireless LAN USB card is communicating. When operating in Ad-Hoc mode, it shows the virtual MAC address used by computers participating in the Ad-Hoc network.

Current Channel: Shows the channel on which the connection is made.

Current Tx Rate: Shows the highest transmit rate of the current association.

Throughput: Shows the short term transmit and receive throughput in bytes/second, and is continuously updated.

Link Quality: Based on the quality of the received signal of the Access Point beacon. There are 5 states of link quality:

100%~80%: Excellent link.

80%~60%: Good link quality.

60%~40%: Fair link quality.

Under 40%: Poor or no connection.

Signal Strength: Based on the received signal strength measurement of the baseband processor of the Beacon signal. Same as link quality, there are 5 states of signal strength:

100%~80%: Excellent signal strength.

80%~60%: Good signal strength.

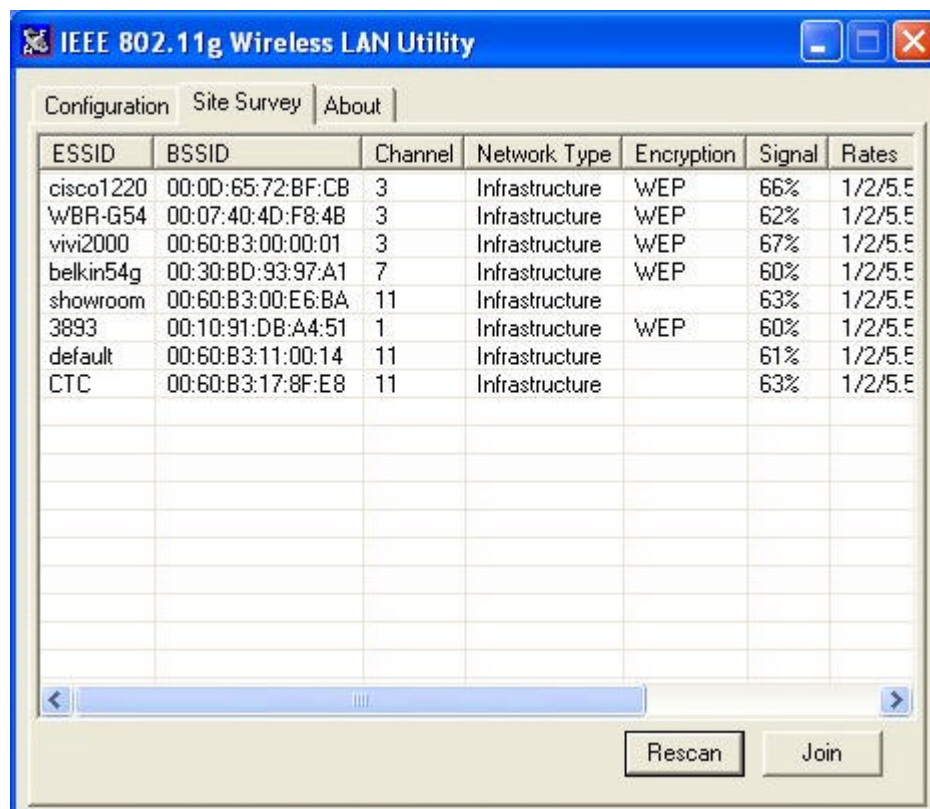
60%~40%: Fair signal strength.

Under 40%: Poor or no signal strength.

You can click the **Rescan** button to force the radio to rescan all available channels. If your link quality or signal strength is poor, rescanning can be used to push the radio off a weak Access Point and search for a better link with another Access Point.

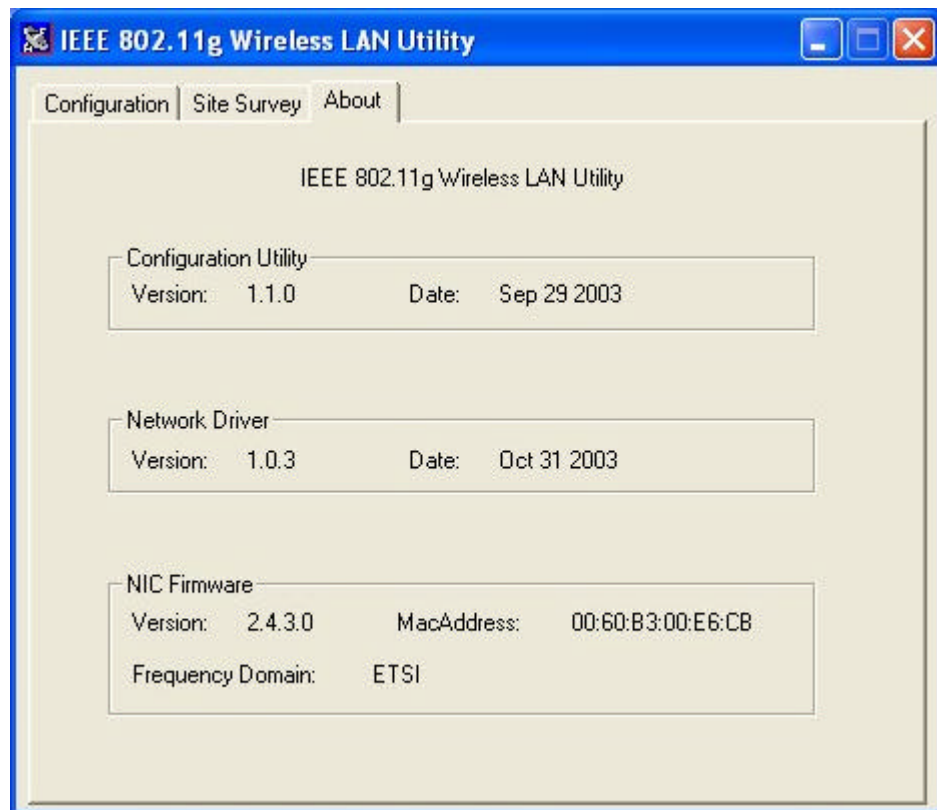
Site Survey:

By clicking the **Rescan** button, the AP Browser can display Access Points around the working environment. Besides showing the ESSID of each Access Point, it also displays BSSID, Channel, Capability, Signal, and Rates. To join any of the displayed Access Points, highlight the Access Point you desire to connect and then click the **Join** button to associate to the AP.



About:

The **About** item shows the versions of the Wireless LAN Utility, driver, firmware of the IEEE 802.11g Wireless LAN USB card. Also, the MAC address and frequency domain are displayed.



Limited Warranty

This Warranty constitutes the sole and exclusive remedy of any buyer or reseller's equipment and the sole and exclusive liability of the supplier in connection with the products and is in lieu of all other warranties, express, implied or statutory, including, but not limited to, any implied warranty of merchantability of fitness for a particular use and all other obligations or liabilities of the supplier.

In no even will the supplier or any other party or person be liable to your or anyone else for any damages, including lost profits, lost savings or other incidental or consequential damages, or inability to use the software provided on the software media even if the supplier or the other party person has been advised of the possibility of such damages.

The following are special terms applicable to your hardware warranty as well as services you may use during part of the warranty period. Your formal Warranty Statement, including the warranty applicable to our Wireless LAN products, appears in the Quick Installation Guide which accompanies your products.

Duration of Hardware Warranty: One Year

Replacement, Repair or Refund Procedure for Hardware:

If your unit needs a repair or replacement, return it to your dealer/distributor in its original packaging. When returning a defective product for Warranty, always include the following documents:

- The Warranty Repair Card
- A copy of the invoice/proof of purchase, and
- The RMA Report Form (To receive a Return Materials Authorization form (RMA), please contact the party from whom you purchased the product).

Upon proof-of-purchase we shall, at its option, repair or replace the defective item at no cost to the buyer.

This warranty is contingent upon proper use in the application for which the products are intended and does not cover products which have been modified without the reseller's approval or which have been subjected to unusual physical or electrical demands or damaged in any way.

Please complete the information below and include it along with your products.

Name:	
Title:	
Company:	
Telephone:	
Fax:	
Email:	
City/State/Zipcode:	
Country:	
Product Name:	
Serial Number:	
MAC Address:	
Invoice Date:	
Product Description:	

If you have any further questions, please contact your local authorized reseller for support.