

433MHz Wireless 5-day Weather Forecaster

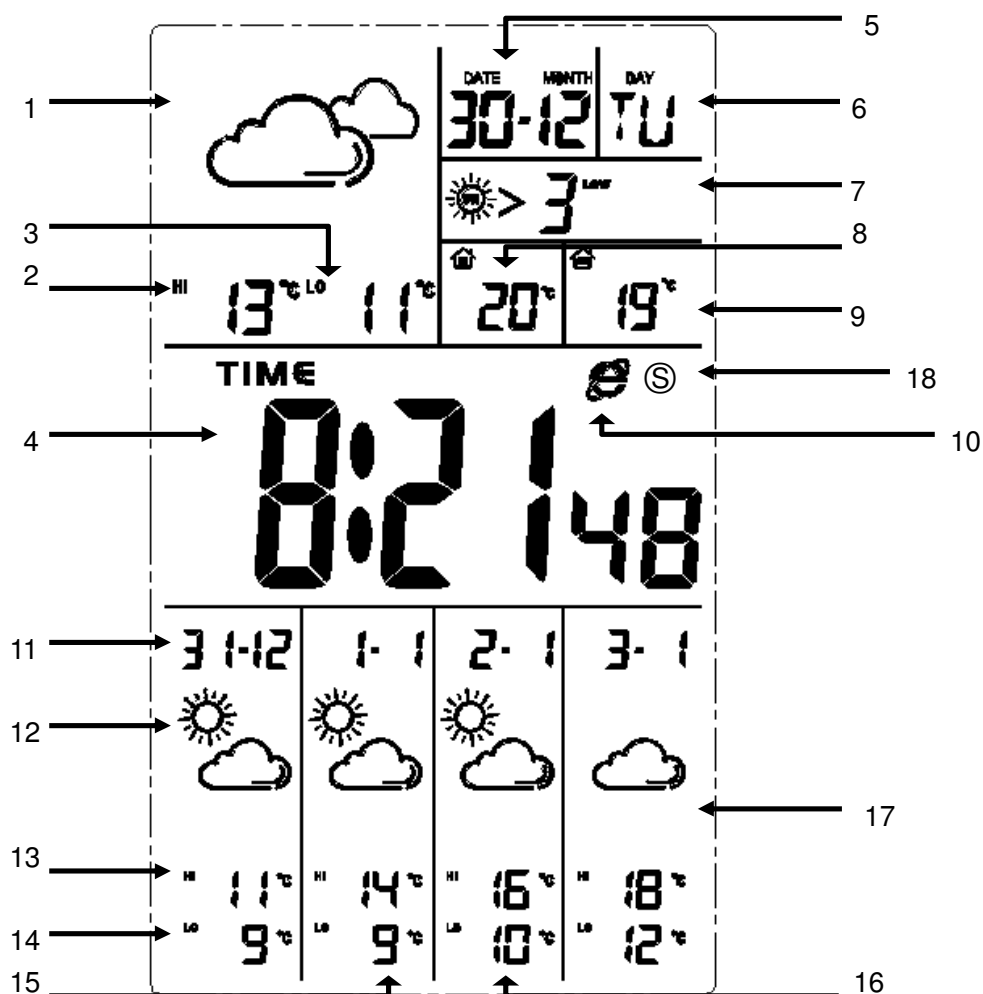
Dear Customer:

Congratulations on the purchase of your new weather station clock. And many thanks for your choose our products. This is a 5-day weather forecaster product. Please read this instruction manual carefully before using. Thanks.

Carefully open and check that the following contents are completed:

- 1) base station (the receiver)
- 2) thermometer sensor(the transmitter)
- 3) USB
- 4) CD-ROM

Display Icon of the receiver:

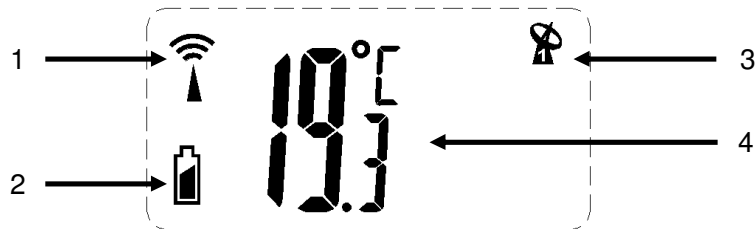


Descriptions

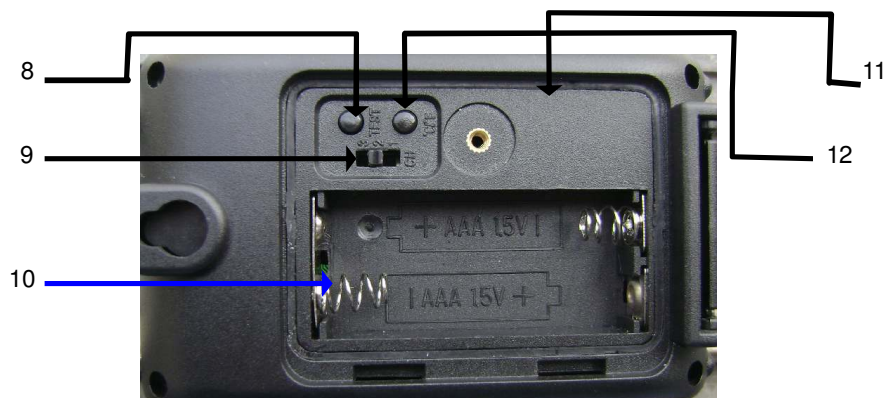
- 1.The display of current day weather
- 2.The highest temperature display of current day (°C/°F)
- 3.The lowest temperature display of current day (°C/°F)
(The display temperature is the city which you chose from the internet.)
- 4.Time display (update from the computer)
5. Month and date
6. Day of week

7. UVI intensity indicator:0-17 phases; whenever over the 17 phase, displaying “>18”
8. The indoor temperature of current condition(°C/°F)
9. The outdoor temperature of current condition(°C/°F)
10. The indicate of internet (“E” displaying means online; “E” flashing means register for; “E” disappeared means offline)
11. The following second day
12. The weather of the following second day (fourteen displays in total)
13. The highest temperature of the following second day
14. The lowest temperature of the following second day
15. The weather forecast of the following third day
16. The weather forecast of the following fourth day
17. The weather forecast of the following fifth day
18. DST function (the application of the United States) . The same with the computer’s.

Display Icon of the transmitter



The back of transmitter:



Descriptions

1. RF signal
2. Low battery icon
3. Chanel number

4. current Temperature
5. Hanging hole
6. Locknut
7. Standar
8. Test key (no function)
9. Channel selection key (no function)
10. battery compartment case
11. Waterproof loop
12. Swift key of °C/°F

STEP ONE:

BATTERIES

Insert the batteries in the transmitter unit before you set up the main unit. Do not use rechargeable batteries.

- 1) The outdoor transmitter is a waterproof design. The battery compartment cover is locked by nut. So before using, please kindly unscrew the nut first.
- 2) Remove the battery compartment cover, then you can see the below picture:
- 3) Insert the batteries according to battery indicators inside the compartment.
- 4) After power on, the transmitter would check the current temperature and low battery. Then it would send the current data to the receiver.
- 5) Every 60 seconds it would check the current data and send it to the receiver again.
- 6) Closed the battery compartment cover and lock with nut again.
- 7) You can put the outdoor transmitter in garage, on outdoor wall or window or indoor living room or in garden.
- 8) The valid distance for the transmitter and receiver is up to 100M in an open area.
- 9) Insert the batteries of the main unit.

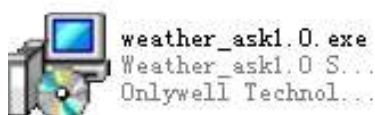
Once the batteries are inserted into the receiver, with a "BI" sound then enter into the normal display.

Normal display for the main unit:

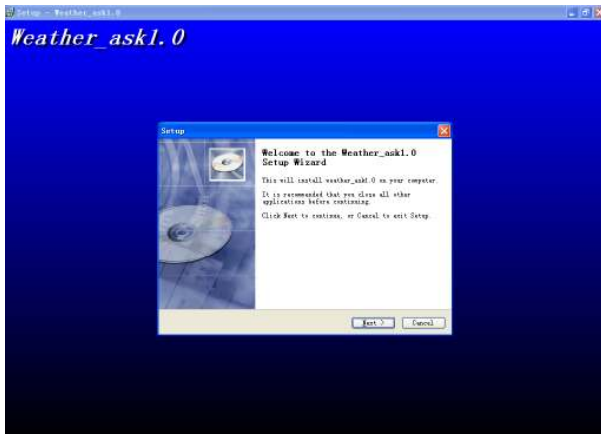
- 1) Time: 0 : 00 : 00 with 24hrs ;Date: 1/1,2000 ,Mon.;Temperature:current temperature of the inner of the receiver;language: English.Weather chart: no sign. The highest and lowest temperature display "- -". Alarm1 and alarm2: 0 : 00,and are off. Then the second and "E" sign begin flashing. It means the product is working. And it would detect the temperature, humidity, automatically from the USB.Once it gets the signal, "E" will always display. The indoor and outdoor temperatures begin flashing means entering into RF receiving mode for 3 minutes.When the RF signal is registered, the transmitter will update the data and transmit to the main.The indoor and outdoor temperatures display the current ones.

STEP TWO:

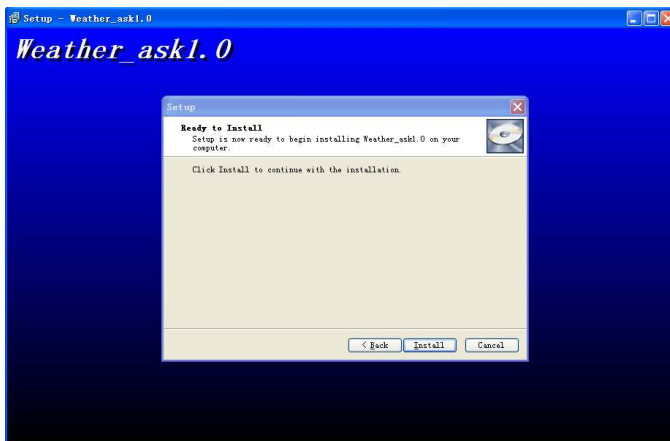
- 1) Insert the CD-ROM into the computer, then a install file showed by the drive.As picture (1):



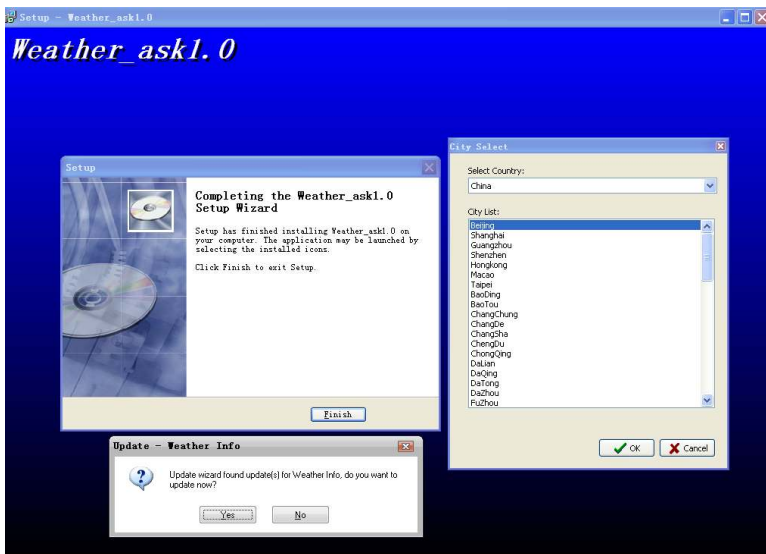
- 2) Double Click the install file then the screen showed as picture (2):



3) Click the “NEXT” key then the screen showed as picture (3):



4) Click the “Install” key then the screen showed as picture(4):

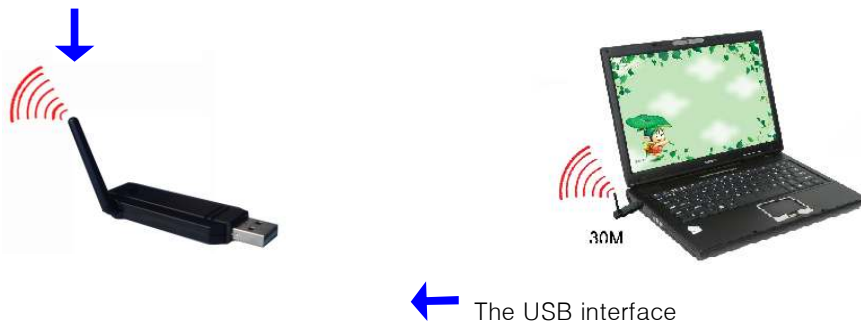


5) Now choose the city you're living on. If you couldn't find that city name among the options, just choose the next one as you like. Click the “OK” key and then the “Finish” key. At last, click the “YES” key to finish installing. The computer will remove.

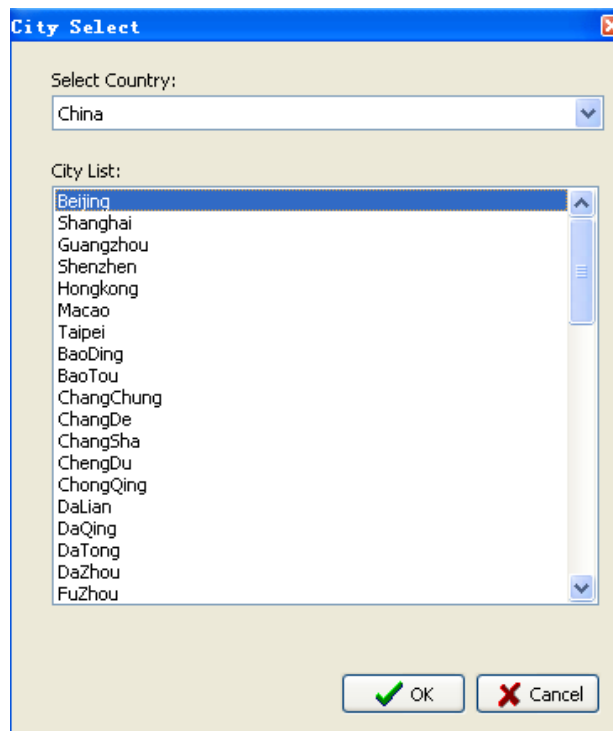
6) When the computer removed, a sign showed on the desktop, as picture (5) :



- 7) Then insert the USB correctly into the computer helping to receive the newest signal, as picture (6):
the transmit



- 8) Double click the run-program to choose whichever city you'd like to know about the weather, then click the "OK" key.
As picture (7):



- 9) Now, installation is finished. The USB will transmit the data every 55 seconds. At the same time, the indicator light will light once. It means the product is working.

SETP THREE:

1)Time setting

- * At time mode, hold the "MODE" key 3 seconds entering into time setting mode. "year" is flashing.
- * First to adjust the year. Press "UP/DOWN" key to adjust, press "MODE" key confirm the setting.
- * The order of setting is year > > month> day > seven national weekday languages >12/24hr>hour> minute>exit.

Re: seven languages: German> English > Italian > French >Dutch > Spanish >Danis,

Language	Sunday	Monday	Tuesday	Wednesday	Thursday	Friday	Saturday
German,GE	SO	MO	DI	MI	DO	FR	SA
English,EN	SU	MO	TU	WE	TH	FR	SA
Italian,IT	DO	LU	MA	ME	GI	VE	SA

French,FR	DI	LU	MA	ME	JE	VE	SA
Dutch,NE	ZO	MA	DI	WO	DO	VR	ZA
Spanish,ES	DO	LU	MA	MI	JU	VI	SA
Denmark,DA	SO	MA	TI	ON	TO	FR	LO


* When setting the date, the weekday will be automatically set.

* After setting and if you do not operate within 20 seconds, it would return to time mode.

2) Alarm setting


2.1 ALARM1 setting

2.1.1 At time mode, press the "MODE" key to enter into R1 setting mode. The LCD display: 0 : 00 : A1. Hold the "MODE" key 3 seconds and the hour is flashing with 1 HZ frequency. Press the "UP/DOWN" key to adjust, press "MODE" key confirm the setting. Minute setting is the same. Press the "MODE" key to confirm and return to the time mode. **After setting and if you do not operate within 20 seconds, it would return to time mode.**

Press the "ALARM" key to turn on the ALARM 1, then  appeared.

2.2 ALARM2 setting

2.2.1 At time mode, press the "MODE" key two times to enter into R2 setting mode. The LCD display: 0 : 00 : A2.

Hold the "MODE" key 3 seconds and the hour is flashing with 1 HZ frequency. Press the "UP/DOWN" key to adjust, press "MODE" key confirm the setting. Minute setting is the same. Press the "MODE" key to confirm and return to the time mode. **After setting and if you do not operate within 20 seconds, it would return to time mode.** Press "ALARM" key to turn on the alarm 2, then  appeared.

2.3 After the alarm setting, press the "ALARM" key to turn on or off the "ALARM1" and "ALARM2".

2.4 At normal mode, press the "ALARM" key to turn on or off the "ALARM1" and "ALARM2".

2.5 The alarm time lasts 2 minutes with the sign flashing: 0~10 seconds: A BI-per-second; 10-20 seconds: BI BI twice per second; after 20seconds: BI BI BI BI per second four tones.

STEP FOUR:

Key function guide for receiver


key name	Functions
"MODE"	1) at time mode, press the "MODE" key once to check the ALARM1; press twice to check ALARM2; press three times to exit. 2) Hold the "MODE" key 3 seconds to enter into the time setting.
"ALARM"	at time mode, press the "ALARM" key to turn on or off the alarm.
"UP"	1) at time mode, to press this key is of no effect. 2) at any setting mode, pressed the "UP" key is to be an upward adjustment in the numerical step; or hold this key 3 seconds to enter into the 8 step-by-step express adjustment;
"DOWN"	1) at time mode, press this key to change the temperature unit: °C / °F; at time mode, hold this key 3 seconds to clean the RF outdoor temperature. 2) at any setting mode, pressed the "DOWN" key is to be a downward adjustment in the numerical step; or hold this key 3 seconds to enter into the 8 step-by-step express adjustment;
"REGISTER"	1) at time mode, hold the "REGISTER" key 3 seconds to clean the current weather data. And the receiver will receive the newest data from the USB. It will last for 3 minutes. 2) To press this key once is of no effect.
"SNOOZE/BACK LIGHT"	1) when alarm on, press this key to enter into 5 minutes snooze time. The alarm sign is flashing with 1 HZ per second frequency. 2) At normal time, to press this key is of no effect.. (if your product have light, press this key to turn on the light. The light will last 5 seconds. Please kindly check.)

On the transmit:

“**TEST**”: at normal mode, press the “TEST” key once is of no effect. When detecting, hold this key or reset, the transmit enter into RF detecting mode. It transmits very 2 seconds frequencyly. The RF detecting mode will exit when resetted or inserted the batteries again.

“**C/F**”: at normal mode, press the “C/F” key once to change the temperature unit: °C / °F.

REMARK:

- 1) **Low battery indicator:** If the  appear,flashes the battery.
- 2) Please kindly keep the USB, it will help to update the current weather correctly.
- 3) When you unlock the battery compartment cover of the transmitter to operate, please remember to lock the battery compartment cover after the operation to avoid the battery damp.

Warning:

- Dispose of the old batteries properly. Do not dispose of the old batteries in a fire.
- Do not leave the batteries where a child or pet could play with or swallow them. If the batteries are swallowed, contact a physician immediately.
- The batteries may explode if mistreated. Do not attempt to recharge or disassemble the batteries. .
- Use only fresh batteries of the required size and type. Do not mix old and new batteries, different types of batteries, or rechargeable batteries of different capacities.
- Do not allow children to play with any plastic bags that accompany this unit. Plastic bags may present a hazard to young children.
- Close attention is necessary when this unit is operated near children. Do not allow children to play with this unit. It is not a toy.

Troubleshooting guide

QUESTION 1.: Display shows no information.

RESOLUTION: Ensure batteries are fresh and installed correctly.

QUESTION 2: Outdoor temperature and humidity show “--” or wrong data.

RESOLUTION: It means the receiver do not receive the outdoor data from the transmitter. First ,please reset the battey then you need to unlock the nut of the transmitter, and press “TEST” key to send the data again until the receive the data from the transmitter. Finally, please lock the batter cover of the transmitter.

FCC Warning statement:

This device complies with Part 15 of the FCC Rules. Operation is subject to the following two conditions: (1) this device may not cause harmful interference, and (2) this device must accept any interference received, including interference that may cause undesired operation.

The users manual or instruction manual for an intentional or unintentional radiator shall caution the user that changes or modifications not expressly approved by the party responsible for compliance could void the user’s authority to operate the equipment. In cases where the manual is provided only in a form other than paper, such as on a computer disk or over the Internet, the information required by this section may be included in the manual in that alternative form, provided the user can reasonably be expected to have the capability to access information in that form.

For a Class B digital device or peripheral, the instructions furnished the user shall include the following or similar statement, placed in a prominent location in the text of the manual:

NOTE: This equipment has been tested and found to comply with the limits for a Class B digital device, pursuant to Part 15 of the FCC Rules. These limits are designed to provide reasonable protection against harmful interference in a residential installation. This equipment generates, uses and can radiate radio frequency energy and, if not installed and used in accordance with the instructions, may cause harmful interference to radio communications. However, there is no guarantee that interference will not occur in a particular installation. If this equipment does cause harmful interference to radio or television reception, which can be determined by turning the equipment off and on, the user is encouraged to try to correct the interference by one or more of the following measures:

- Reorient or relocate the receiving antenna.
- Increase the separation between the equipment and receiver.
- Connect the equipment into an outlet on a circuit different from that to which the receiver is connected.
- Consult the dealer or an experienced radio/TV technician for help.

(c) The provisions of paragraphs (a) and (b) do not apply to digital devices exempted from the technical standards under the provisions of Section 15.103.

(d) For systems incorporating several digital devices, the statement shown in paragraph (a) or (b) needs to be contained only in the instruction manual for the main control unit.

(e) In cases where the manual is provided only in a form other than paper, such as on a computer disk or over the Internet, the information required by this section may be included in the manual in that alternative form, provided the user can reasonably be expected to have the capability to access information in that form.