

Thermal Label Printer Instruction Manual



Print Label

Zlabel

Android editing software

IOS editing software

Install Password:1234

Version:December 2023

Please download printer drivers and other tools via the below link:

www.cnfujun.com/d/39

Safety Precautions

Please be sure to read this manual carefully before using the printer operation to ensure correct and safe use of the printer.

Security Warning

▲ Warning: We strongly recommend using the adapter provided by our company. Connecting an improper adapter may cause fire, explosion, or damage to the printer.

▲ Warning: Print head for the heat-generating components, just after the end of the printing process and print can not touch the print head and the surrounding parts, in order to avoid burns.

Precautions

1.Don't use and storage of the printer on the high temperature, high humidity and pollution.

2.The printer's power adapter is connected to a properly grounded outlet, avoid large motors or other power supply voltage fluctuations can cause the device to use the same socket.

3.Avoid water or conductive material (such as:metal)into the inside of the printer in the event,immediately turn off the power.

4.The printer can not print without paper state, otherwise it will seriously damage the platen and the thermal print head.

5.Users are not allowed to disassemble the printer for repair or renovation.

6.In order to ensure the print product quality and life, we recommend using equivalent quality thermal paper.

7.Keep manual for future use reference.

1.Characteristics & Application Areas

- Can print thermal paper with a maximum width of 100mm.
- Fast printing speed and clear handwriting.
- It can intelligently adjust the temperature during printing to ensure stable operation of the machine.
- Supports paper bin bracket design.

Application Areas

Manufacturing and warehousing industry	Specimen marking	Price tag
Post package industry	Shelf label	Jewelry label
Product labeling	Home office	Instruction label
Drug labeling	Patient identification	Medical industry

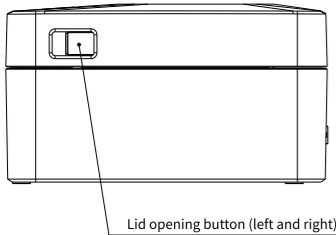
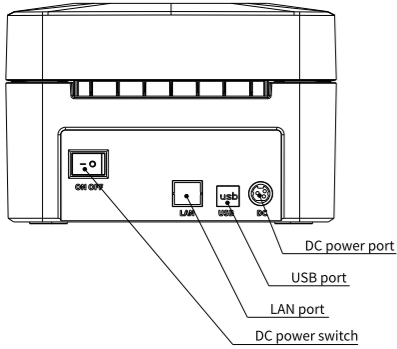
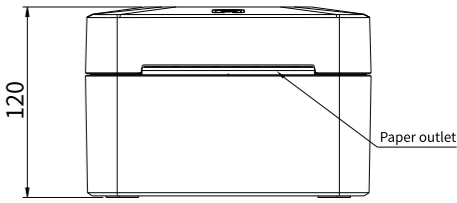
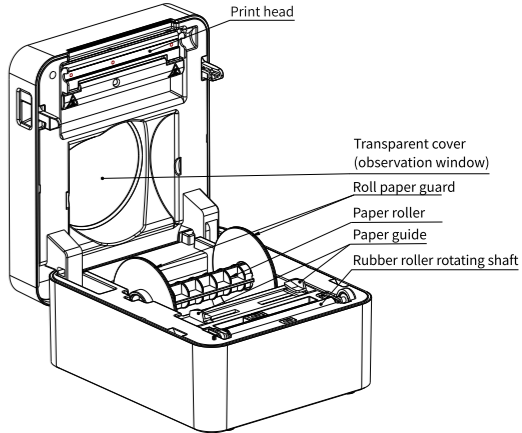
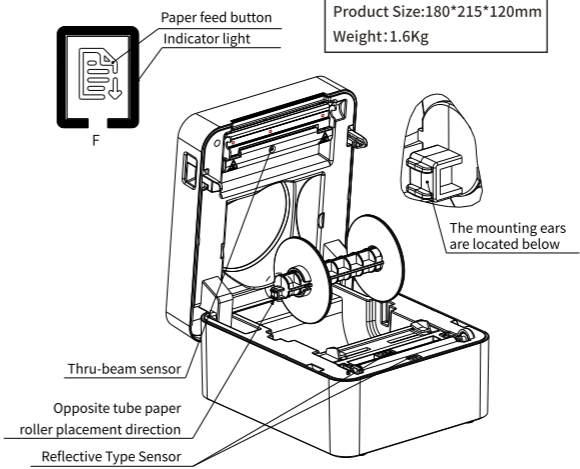
2.Specification

Printing method: direct line thermal printing
Printing speed: 160mm/s (MAX)
Printing machinery life: 50km or 100 million pulses
Resolution: 203dpi (8dot/mm)
Internal font library: supports 11 font sizes
Print LOGO: Support downloading Logo and trademark printing (ESC/POS)
Print command: TSPL command
(optional CPCL command or ESC/POS command)
Media sensors: Transmissive and reflective
Communication interface: USB+ (LAN port, Bluetooth, WIFI optional)
Thermal paper types: continuous paper, label paper, folding paper, tag paper
Effective printing width: 100mm (MAX 800 dots)
Maximum available paper width: 104mm
Available minimum paper width: 25mm
Printing paper thickness: 0.06–0.30mm
Power supply: DC24V/2.5A
One-dimensional code: UPC–A / UPC–E / JAN13(EAN13) / JAN8(EAN8) / CODE39 / ITF / CODABAR/ CODE93 / CODE128
QR code: QR CODE, PDF417

Driver: Windows/MACOS/Android/IOS
Working temperature: +0℃–50℃ (no condensation allowed)
Working humidity: 20% to 85%RH (no condensation allowed)
Storage temperature: –20C to 60C (no condensation allowed)
Storage humidity: 5% to 95%RH (no condensation allowed)

3.Appearance

▲ Notice: The interfaces vary depending on customer selection.
The interfaces shown in the figure below are for reference only.

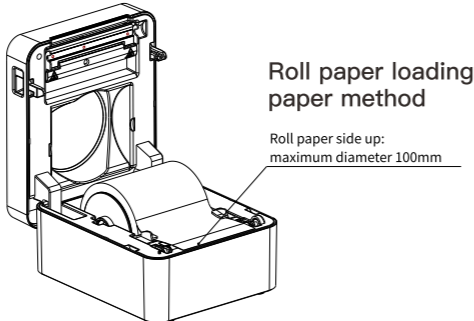


4.Paper Roll Installation & Button Instructions

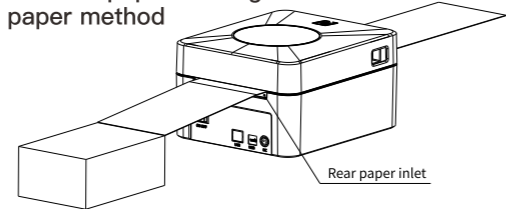
Supports printing with various paper specifications.

Thermal paper installation method is as follows:

- (1) Open the printer cover.
- (2) Thermal paper roll as shown in the following figure into the paper loading position.
- (3) Pull out the paper short to box outside,close the top cover.



Stacked paper loading paper method



Indicator lights and button Instructions :

POWER(Red Light)	POWER(Blue Light)	Printer Status
OFF(Lights off)	OFF(Lights off)	Printer shuts down
OFF(Lights off)	Always on	Turn on the printer
Flash(Light flashing)	OFF(Lights off)	The printer is powered on but is out of paper or the label paper detection is abnormal
Power switch		Printer power on/off
With power on, press FEED button		Printer paper feeding/label paper positioning calibration (press and hold the FEED button until the red light turns on and the machine beeps twice and release it)
When the power is off, press and hold FEED button, then turn on the power button and turn on the printer. The printer will self-check the paper feed. Wait until the ERROR red light lights up and release the FEED button		Print self-test page

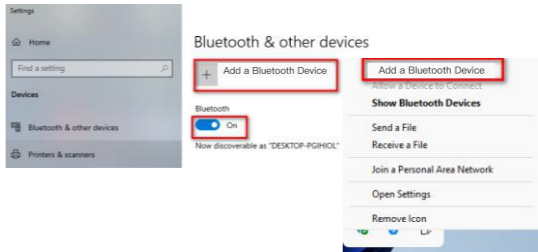
5.Bluetooth configuration

1. Please first confirm whether the device you are using (such as a laptop) has Bluetooth function, and then enable Bluetooth. If the operation is successful, you can see the Bluetooth icon displayed on the lower right side of the computer.

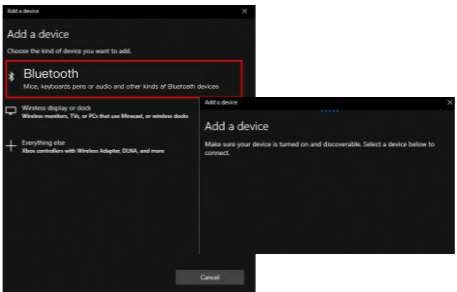


2. Turn on the Bluetooth printer (power on)

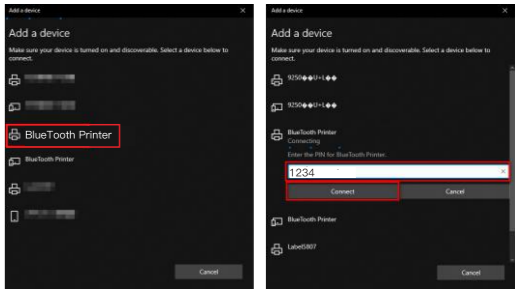
3. Click the Bluetooth icon, then click "Add Bluetooth Device" to enter the next screen, then click "Add Bluetooth or other device" and confirm that the Bluetooth status is on (as shown in the picture).



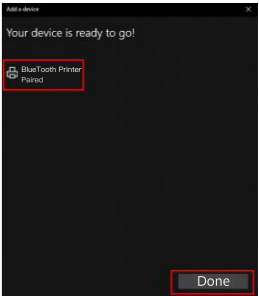
4. Click Bluetooth, as shown in the picture below.



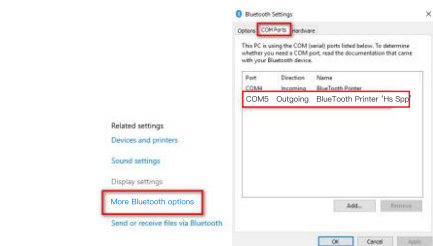
5. After the search is successful, all Bluetooth printers will appear in the following screen list. For example, the searched Bluetooth printer is "BlueTooth Printer". Please click to select "BlueTooth Printer" and then enter the Bluetooth PIN code as prompted (the default printer PIN code: 1234), and then click "Connect".



- 6.When the following prompt appears, the pairing is successful, click "Completed".



7. Query the port assigned to the Bluetooth printer by the computer. The operation is as follows:



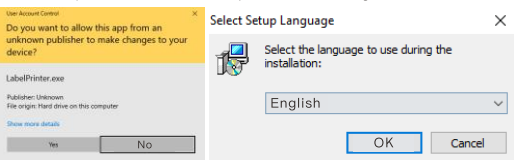
8. Open the "Printer Properties" of the label printer driver, select the COM port automatically assigned by the Bluetooth device in "Port", and set the port setting corresponding to the "Outgoing" COM port of the Bluetooth serial port.

(Note: The Bluetooth device will automatically assign a COM port. If it cannot be found, please restart the computer.)

6.How to install and use the driver

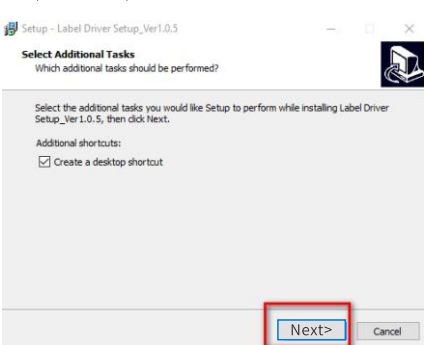
(Note: Tag editing software needs to be used with this driver)
Driver download website: www.cnfujun.com/d/39
Find "Label Printer Driver", open this folder and click the corresponding operating system driver to install it.

1. The label printer is installed manually, as shown in the figure below:



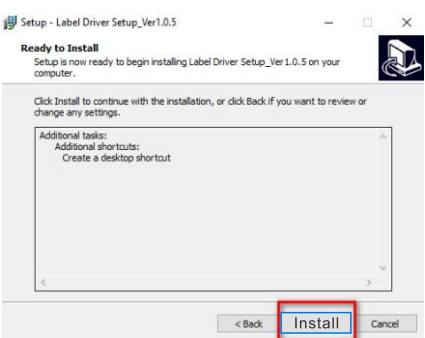
10

2. After "OK", select "Next", as shown below:

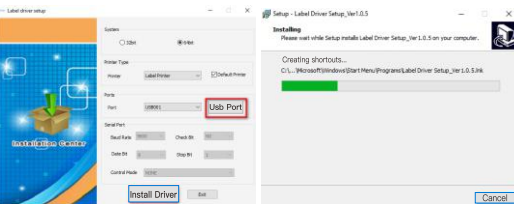


11

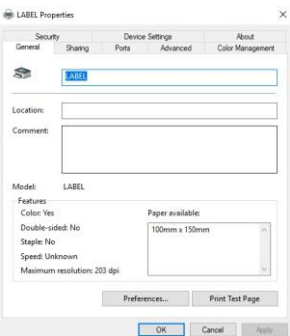
3. Click "Install", as shown below:



4. If the interface is a USB printer, click "USB Port Detection" to automatically identify the USB port and click "Install Driver". For other interfaces, click "Install Driver" directly.



5. After the label printer driver is successfully installed, the printer properties interface will automatically pop up as shown below:



12

6. Click "Print Test Page", if the printer prints a normal page, then it indicates that the job is successful. Note: If the printer prompts "Print Error", please return to the "Port" option and select USB0002, or USB003, or USB001.

7.Label editing software installation

Driver download website: "www.cnfujun.com/d/39" folder, find the label editing software, and click to install.
(Note: This software is suitable for Windows systems.)

8.How to clean the print head

Printer cleaning:

When the printer encounters one of the following conditions, the print head should be cleaned:

- ① The printing is not clear.
- ② A vertical column of the printed page is not clear.
- ③ Paper feeding noise is loud.
- ④ There is too much carbon deposit on the print head.

The print head cleaning steps are as follows:

1. Turn off the power of the printer, open the upper cover, and remove the paper if there is any.
2. If you have just finished printing, wait for the print head to cool down completely.
3. Use a soft cotton cloth dipped in absolute ethanol (should be wrung out) to wipe away dust and stains on the surface of the thermal sensor of the print head.
4. Wait for the absolute ethanol to evaporate completely, then close the upper cover and try printing again.

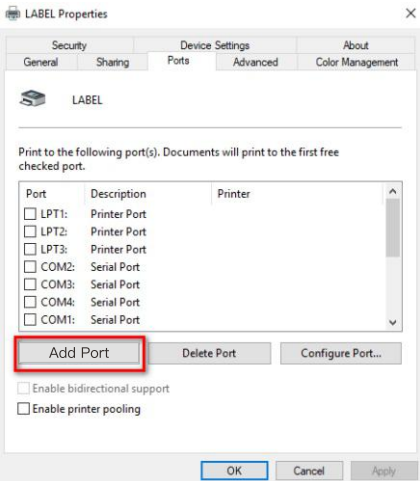
Notice:

1. Make sure the power is turned off during routine maintenance of the printer.
2. Do not touch the surface of the print head with your hands or metal objects, and do not use tweezers and other tools to scratch the surface of the print head, printing roller and sensor. Organic solvents such as gasoline and acetone must not be used.

7. How to use the network port

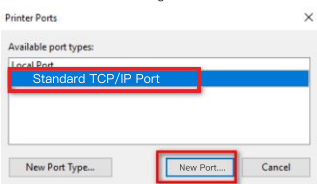
Obtain the IP address of the machine through self-test and print the self-test page: Press and hold the FEED button when the machine is turned off, then turn on the power button. The printer will self-check the paper feed. Wait until the red light turns on and release the FEED button. , the printer will automatically print out the self-test page. The self-test page contains information related to the IP address of the machine. (Factory default IP address: 192.168.1.100)

7.1 Open the printer properties interface, then select "Port" and click "Add Port" as shown below:



13

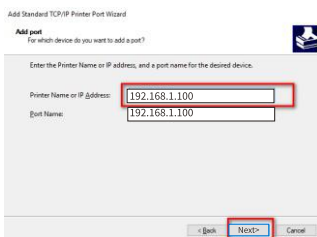
7.2 Select "Add Port" as shown in the figure below:



7.3 Select "Next" as shown below:

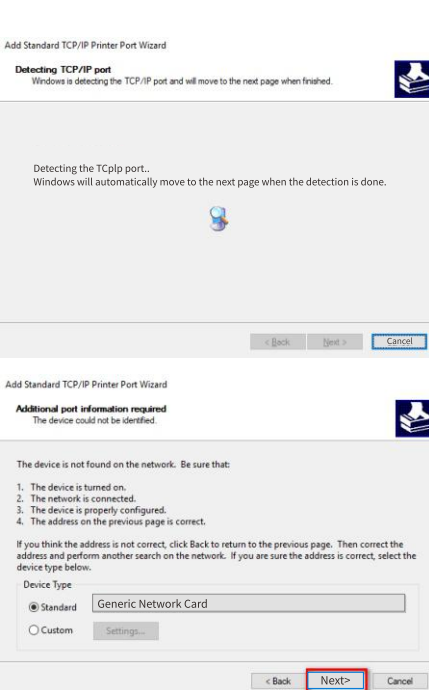


7.4 Select "Next" as shown below:



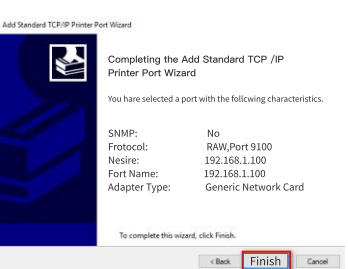
14

7.5 Select "Next" as shown below:

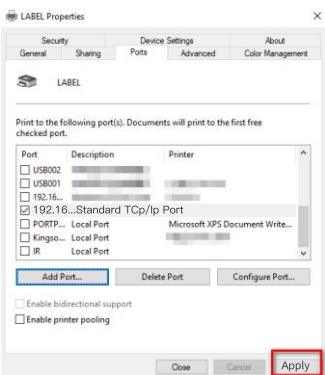


15

7.6 Select "Next" as shown below:

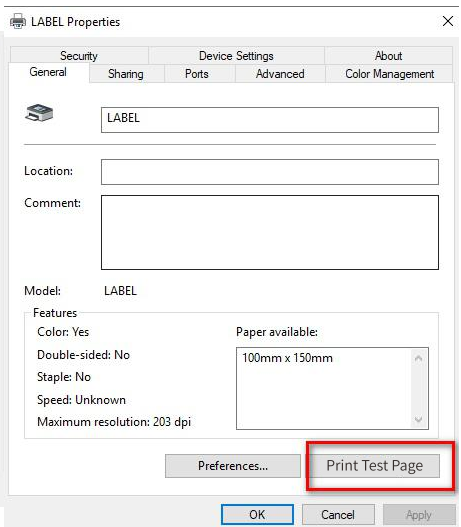


7.7 After clicking "Finish", select the confirmed port and click "Apply", as shown in the figure below:



16

7.8 Return to "General" and click "Print Test Page" as shown below:



17

If the printer prints a normal page, it means that the printer's network port communication is normal and the network port can be used normally. Note: If you need to modify the printer IP, you can refer to the Driver download link: "www.cnfujun.com/d/32" - "Tools" - "Printer Setting Tool" file inside the IP setting method.

9.Label Calibration and Exception Handling Methods

1, Label Calibration Method:

For newly assembled products (including replace the reflective type sensor or upgrade procedures), or the paper is skipped or continuous printing and never stop , the printer should be do the calibration, the method are as follows :
Put the paper into the printer and power on the printer, when the power light is on, press and hold the "FEED" button for 5-6 seconds, till to the led light flashes and the buzzer beeps , then release the FEED button. After that, restart the printer and take a test.

Note: The calibration operation may result in different calibration values due to different paper specifications. The calibration operation can be done according to different cases.

2, If the following cases occur after calibration:

(1) With paper, but the printer reports error :

When this happens, take away the paper and power off the printer first , and then power on the printer, once the red light flashes then long press the "FEED" button immediately, release it when the red light flashes again and the buzzer beeps, after that, wait 2 seconds, then restart the printer and test it again.

(2) Without paper, but the printer don't report error :

When this happens, take away the paper, power on the printer and press and hold the "FEED" button for 8-10 seconds, till to the red light flashes and the buzzer beeps in two times, then release the button, after that, restart the printer and have a test.

19

FCC WARNING

This device complies with part 15 of the FCC Rules. Operation is subject to the following two conditions: (1) this device may not cause harmful interference, and (2) this device must accept any interference received, including interference that may cause undesired operation. Any changes or modifications not expressly approved by the party responsible for compliance

could void the user's authority to operate the equipment.

NOTE: This equipment has been tested and found to comply with the limits for a Class B digital device, pursuant to Part 15 of the FCC Rules. These limits are designed to provide reasonable protection against harmful interference in a residential installation.

This equipment generates, uses and can radiate radio frequency energy and, if not installed and used in accordance with the instructions, may cause harmful interference to radio communications. However, there is no guarantee that interference will not occur in a particular installation.

If this equipment does cause harmful interference to radio or television reception,which can be determined by turning the equipment off and on, the user is encouraged to try to correct the interference by one or more of the following measures:

1. Reorient or relocate the receiving antenna.
 2. Increase the separation between the equipment and receiver.
 3. Connect the equipment into an outlet on a circuit different from that to which the receiver is connected.
 4. Consult the dealer or an experienced radio/TV technician for help.
- To maintain compliance with FCC's RF Exposure guidelines, This equipment should be installed and operated with minimum distance between 20cm the radiator your body: Use only the supplied antenna.