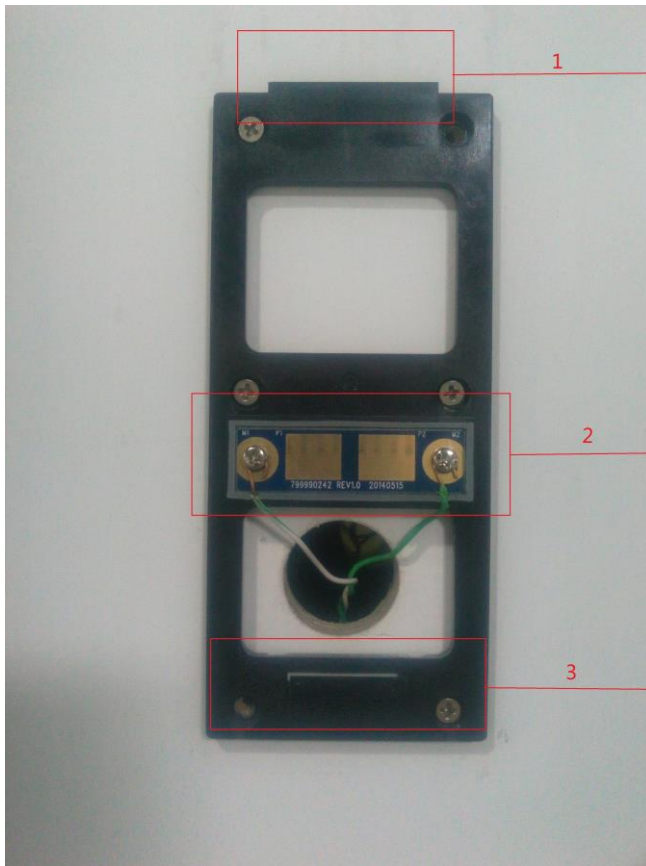


Part 1: Hardware Connection



1. Base of Doorbell
2. Power and Control Interface of Doorbell
3. Base of Doorbell



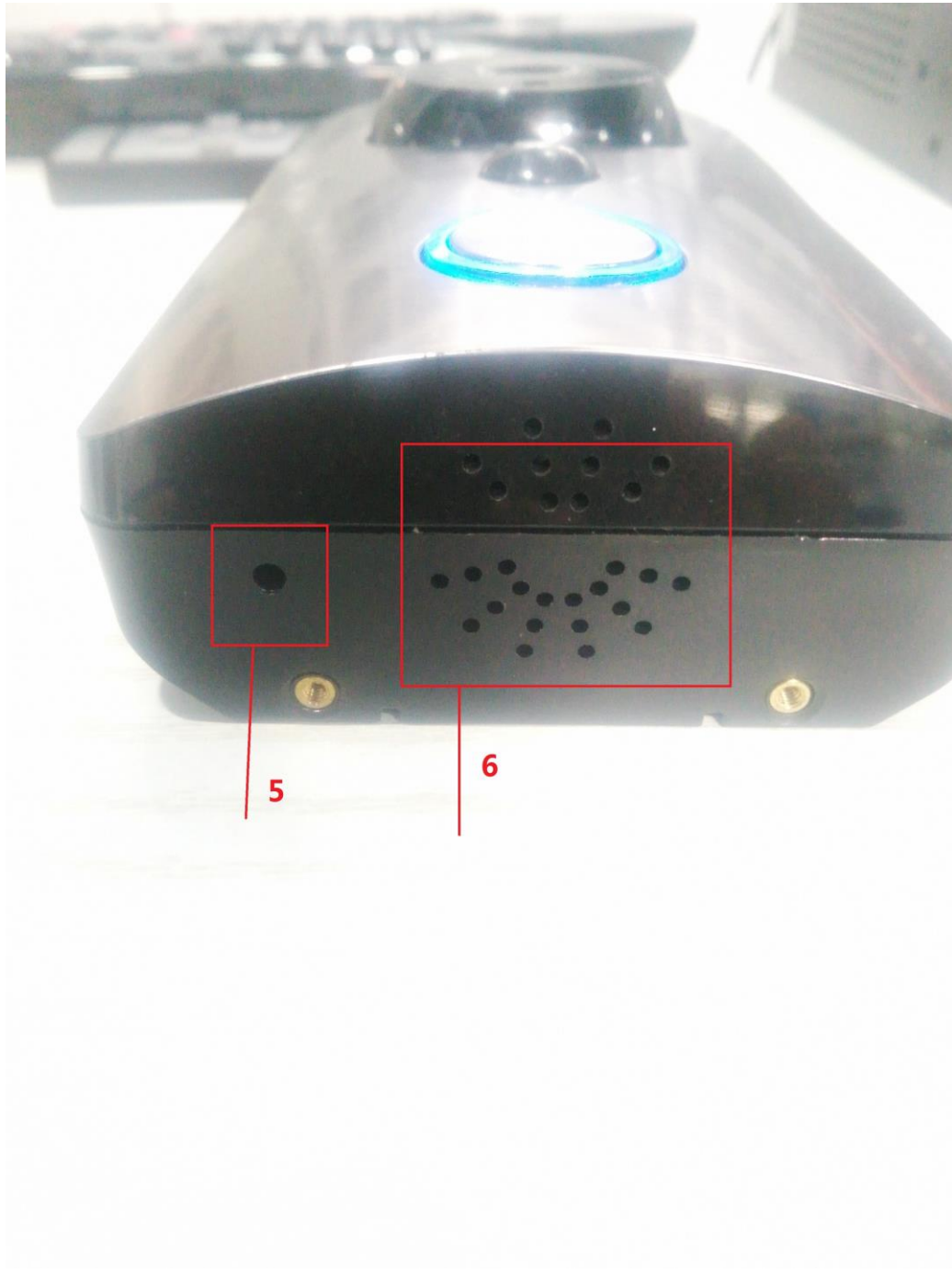
- 1.Doorbell Mount
- 2.Doorbell Power Input
- 3.Doorbell Mount

Step 1: Insert Number 1 and 3 into the corresponding part to finish the hardware installation.

Step 2: After the installation, the lamp on doorbell's button will start self-inspection and light as solid green. If you find the surveillance camera is not pointing to the correct direction, you can adjust it accordingly.

Part 2: Getting to Know Your Doorbell

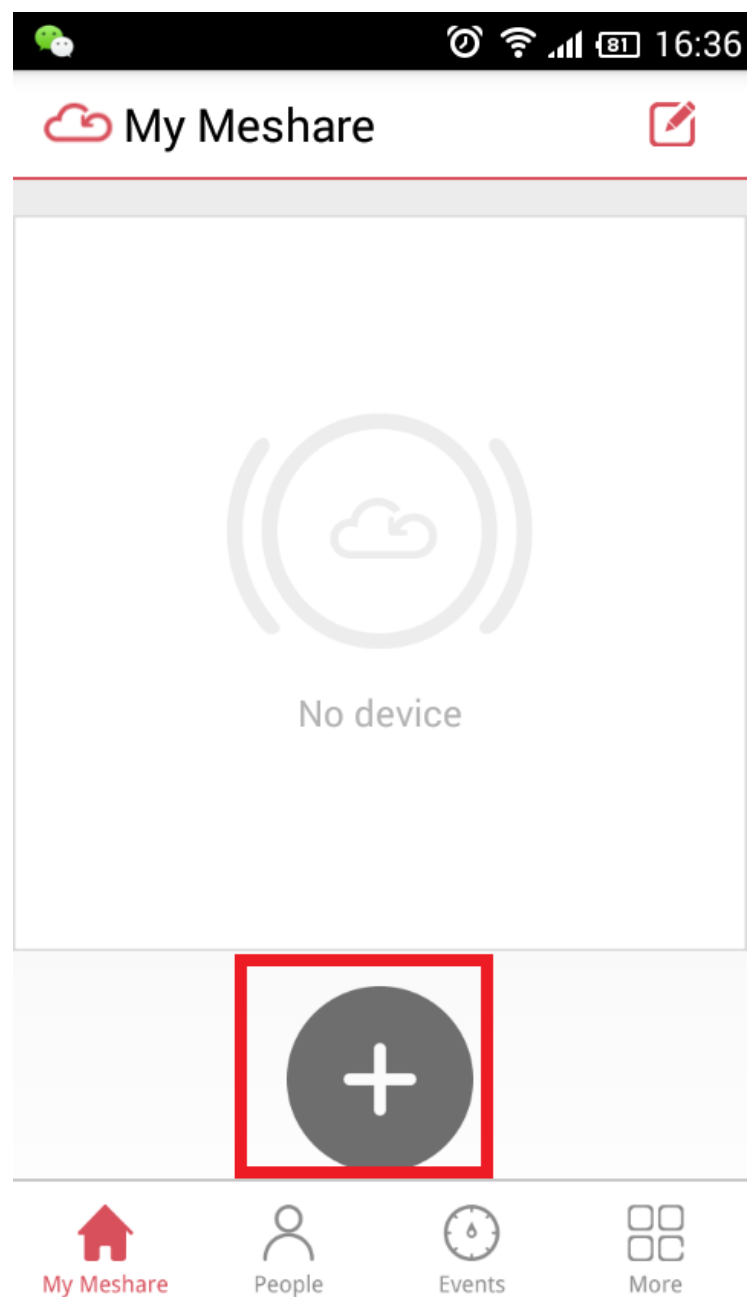




1. Surveillance Camera of the Doorbell
2. Built-in Microphone
3. Infrared LEDs and Motion Sensors
4. Doorbell Button
5. Reset Button
6. Built-in Speaker

Part 3: Mobile Connection

1. Download free meShare App from the Google Play or the App Store.
2. Register an account, if you already registered the account before, login with your account, lunch App, tap the “+” button to start adding the devices.





< Add Device

Connecting your smart device to
MeShare is simple!

Please power on your smart device.



Ready



🕒 📶 📶 📶 81 16:37

⬅️ ☁️ Add Device

Click Ready to configure your
wireless smart device.

Please set up your devices one by one.



My smart device is not wireless.



Ready



Add Device

When your device's LED is blinking green, it is ready to set up.

This may take a moment.



When the button lamp of the doorbell is blinking green, tap “Ready”.



Add Device

Enter the password of the WiFi network your phone is connected to.

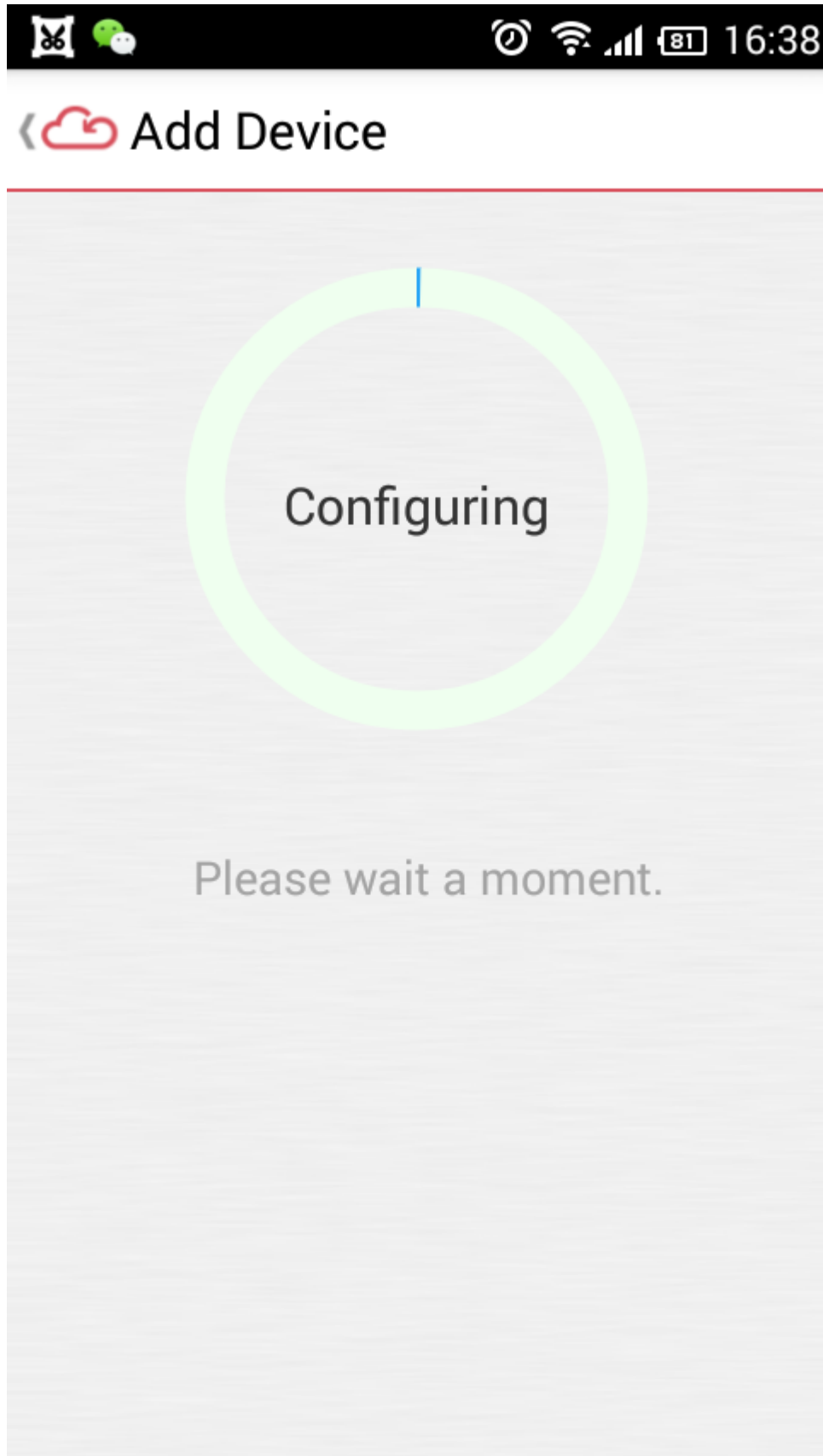
zmodo_show



| Password

Next

Enter your WiFi password and Tap" Next".



Now the doorbell button lamp will change color from blinking green to blinking

blue.

When the button lamp is changing from blinking blue to solid blue, it means WiFi configuration is finished. Now you can name your doorbell: for example “home” “office”.



16:39

< Add Device

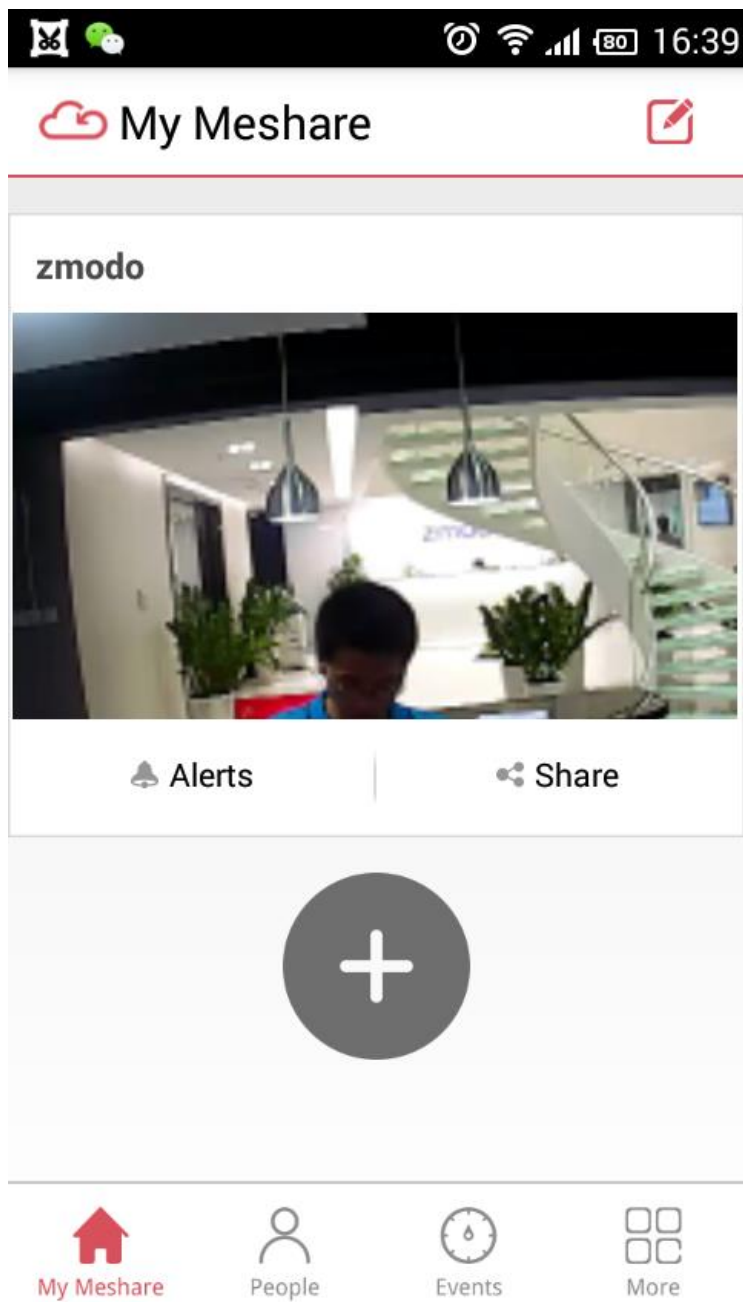
Please name your device 045C06D74A40VAR

DeviceName

Asia/Shanghai

Finish

Enter the device name and tap "Finish".



Till now the mobile setup is successful, Tap the image to enter the doorbell control page.



1. Tap here to control the switch of the door lamp
2. Press here to talk with people standing near your doorbell.
3. Tap here for snapshots

Note:

Voltage Requirement: 10V-36V ;

Motion Sensing range: 16ft (5M) Max Angle: 120 Degree

Motion Detection: Once objects moves, a 30second video will be generated once motion is detected.

changes or modifications not expressly approved by the party responsible for compliance could void the user's authority to operate the equipment.

This equipment has been tested and found to comply with the limits for a Class B digital device, pursuant to Part 15 of the FCC Rules. These limits are designed to provide reasonable protection against harmful interference in a residential installation. This equipment generates, uses and can radiate radio frequency energy and, if not installed and used in accordance with the instructions, may cause harmful interference to radio communications. However, there is no guarantee that interference will not occur in a particular installation.

If this equipment does cause harmful interference to radio or television reception, which can be determined by turning the equipment off and on, the user is encouraged to try to correct the interference by one or more of the following measures:

- Reorient or relocate the receiving antenna.
- Increase the separation between the equipment and receiver.
- Connect the equipment into an outlet on a circuit different from that to which the receiver is connected.
- Consult the dealer or an experienced radio/TV technician for help.

This equipment must be installed and operated in accordance with provided instructions and the antenna(s) used for this transmitter must be installed to provide a separation distance of at least 20 cm from all persons and must not be co-located or operating in conjunction with any other antenna or transmitter. End-users and installers must be provided with antenna installation instructions and transmitter operating conditions for satisfying RF exposure compliance.