



ZODIAC POOL CARE EUROPE
 ZA De la Balme
 31450 BELBERAUD

Zigbee Module user's manual

ZIG_MOD_100

FCC ID : RIR-24ZTM100
IC: 10837A-24ZTM100

Date : 30/07/2013
 Page : 1 / 4

SUMMARY :

- 1. RESTRICTIONS..... 1
- 2. AIM..... 2
- 3. MODULE INTERFACES 2
- 4. IMPACT ON HOST PRODUCT 3
- 5. WHAT IS PROVIDED ? 4

ANNEXE :

None

Evolutions du document

Date	Rev	Author	Content
23/07/2013	A	Thierry Michelon	Initial revision
		22	

1. RESTRICTIONS

This module is intended to be used ONLY in Zodiac Pool System Inc (USA/Canada) and Zodiac Pool Care products (EMEA/APAC)

Module re-use will be done under FCC and IC Limited Modular Approval.



ZODIAC POOL CARE EUROPE
ZA De la Balme
31450 BELBERAUD

Zigbee Module user's manual

ZIG_MOD_100

FCC ID : RIR-24ZTM100
IC: 10837A-24ZTM100

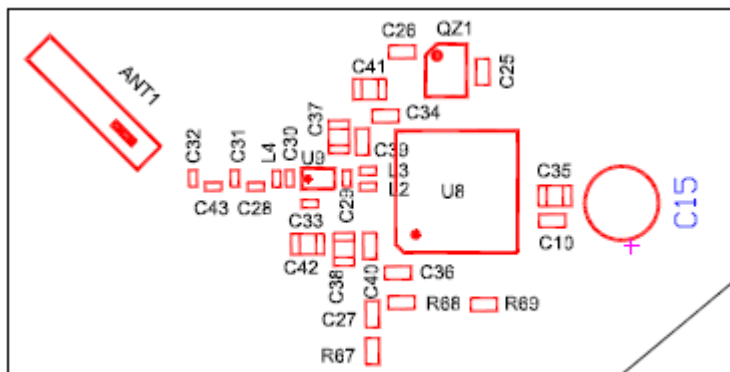
Date : 30/07/2013
Page : 2 / 4

2. AIM

This Zigbee module implement 802.15.4 specification is intended for:

- Point to point application (ie :remote control)
- Star Network topology
- Mesh Network topology


3. MODULE INTERFACES



Power supply: A +3.3VDC supply must be provided. The RF chip has an internal +2.5 and +1.8V regulation.

Communication: I2C Bus is provided

RF antenna: Integrated, no external antenna allowed.

 ZODIAC POOL CARE EUROPE ZA De la Balme 31450 BELBERAUD	Zigbee Module user's manual	ZIG_MOD_100
	FCC ID : RIR-24ZTM100 IC: 10837A-24ZTM100	Date : 30/07/2013 Page : 3 / 4

4. IMPACT ON HOST PRODUCT

4.1. LOCATION

The exact Gerber file should be reproduced on the host PCBA.
Module should be located in a board corner.

4.2. LABELLING

Host product needs to be marked with the following label :

Contains FCC ID : RIR-24ZTM100

Contains IC : 10837A-24ZTM100

This device complies with Part 15 of the FCC Rules. Operation is subject to the following two conditions:

(1) this device may not cause harmful interference, and (2) this device must accept any interference received, including interference that may cause undesired operation.

Please refer to Drawing: H04218

4.3. HOST PRODUCT USER'S MANUAL

Host product user's manual should display the following statement:


FCC Statement

This device complies with Part 15 of the FCC Rules and IC licence-exempt RSS standard. Operation is subject to the following two conditions:

- (1) this device may not cause harmful interference, and
- (2) this device must accept any interference received, including interference that may cause undesired operation.

NOTE: This equipment has been tested and found to comply with the limits for a Class B digital device, pursuant to part 15 of the FCC Rules. These limits are designed to provide reasonable protection against harmful interference in a residential installation. This equipment generates, uses and can radiate radio frequency energy and, if not installed and used in accordance with the instruction, may cause harmful interference to radio communications. However, there is no guarantee that interference will not occur in a particular installation. If this equipment does cause harmful interference to radio or television reception which can be determined by turning the equipment off and on, the user is encouraged to try to correct interference by one or more of the following measures:

- Reorient or relocate the receiving antenna.
- Increase the separation between the equipment and receiver.
- Connect the equipment into an outlet on circuit different from that to which the receiver is connected.
- Consult the dealer or an experienced radio/TV technician for help.

 ZODIAC POOL CARE EUROPE ZA De la Balme 31450 BELBERAUD	Zigbee Module user's manual	ZIG_MOD_100
	FCC ID : RIR-24ZTM100 IC: 10837A-24ZTM100	Date : 30/07/2013 Page : 4 / 4

CAUTION

Any changes or modifications not expressly approved by the part responsible for compliance could void the user's authority to operate the equipment.

NOTE: This device complies with FCC and IC RF radiation exposure limits set forth for general population.

This device must be installed to provide a separation distance of at least 20cm from all persons and must not be co-located or operating in conjunction with any other antenna or transmitter.

Under Industry Canada regulations, this radio transmitter may only operate using an antenna of a type and maximum (or lesser) gain approved for the transmitter by Industry Canada. To reduce potential radio interference to other users, the antenna type and its gain should be so chosen that the equivalent isotropically radiated power (e.i.r.p.) is not more than that necessary for successful communication.

5. WHAT IS PROVIDED ?

Full source code is provided

Gerber files and CAD files

EU, USA (FCC) Canada (IC) and Australian Certification documents

This user's manual with regulatory needed items