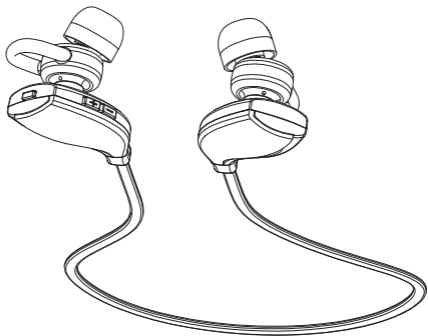


ZONOKI Beats your heart

Z-S1



User Manual

Zonoki.com

CONTENTS

1.WELCOME.....	3
2.HEADSET OVERVIEW.....	4
2.1 INCLUDED ACCESSORIES	
3.HOW TO WEAR.....	5
3.1CHANGING EARGELS	
3.2WEARING THE FITCLIP	
3.3MAGNETIC EARBUDS	
4.HOW TO CHARGE THE BATTERY.....	7
5.HOW TO CONNECT.....	8
5.1CONNECT WITH A BLUETOOTH DEVICE	
5.2CONNECT MULTIPLE DEVICES	
6.HOW TO USE.....	10
6.1 MULTIPLE CALL HANDLING	
7.SUPPORT.....	12
8.TECHNICAL SPECIFICATIONS.....	14

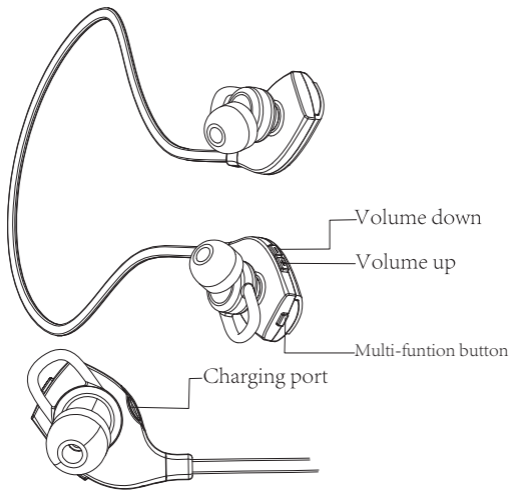
1.WELCOME

Thank you for using the Z-S1. We hope you will enjoy it!

Z-S1 FEATURES

- Great acoustics
- Integrated controls for easy music and call management
- Fashion style for sport
- Specialized ear stabilizers for avoiding fallen off

2. HEADSET OVERVIEW



2.1 INCLUDED ACCESSORIES

Eargels

USB Cable

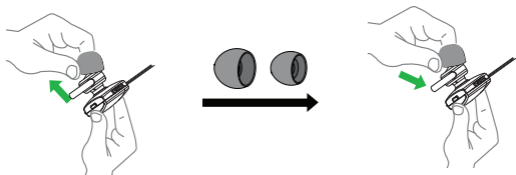


3.HOW TO WEAR



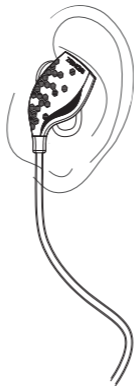
3.1 CHANGING EARGELS

Choose between 3 sets Eargels for optimal fit and comfort



3.2 WEARING THE HOOKS

When wearing the headset, the hook fits into back of the ear.

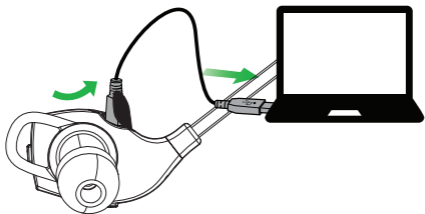


4. HOW TO CHARGE THE BATTERY

Remove the charging cover on the left earbud to expose the micro-USB port. Plug the USB cable into the headset and the PC to begin charging.

It take approximate 2 hours to fully charge the headset.

Note: For safety reasons, it is recommended not to use the headset while it is charging.



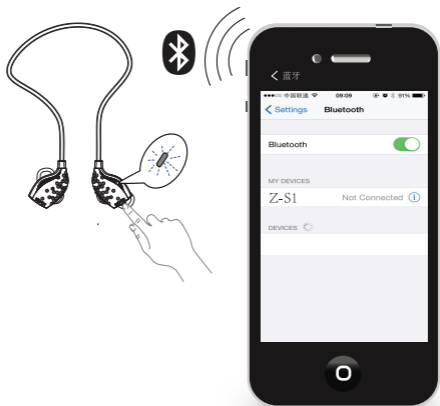
5.HOW TO CONNECT

5.1CONNECT WITH A BLUETOOTH DEVICE

1.Press and hold(8 secs) the Multi-function button until the LED rapidly flashes blue and red alternatively.

2.To connect Z-S1, go to the Bluetooth menu on your phone and select it from the list.

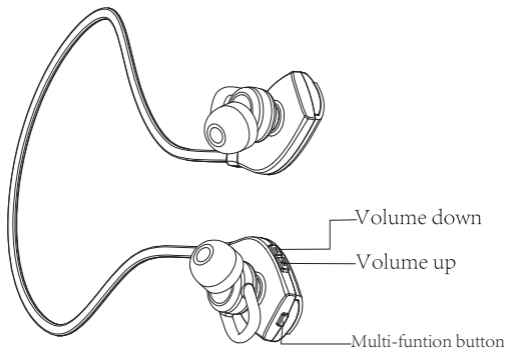
Noted: After you have connected once, simply turn on the device to connect automatically.



5.2CONNECT MULTIPLE DEVICES

It is possible to connect multiple mobile devices to the headset using Bluetooth. If two mobile devices are connected to the headset at the same time and one of the devices loses connection, the Multi-function button will control the remaining connected device(Pause/Play for Music and Answer/End for calls). To reconnect the disconnected device go to the Bluetooth menu and reconnect.

6.HOW TO USE



Function

Action

Turn on/off

Press and hold(3 sec) the **Multi-function button** until the LED flashes

Play/Pause music

Tap the **Multi-function button**

Answer/end call

Tap the **Multi-function button**


Reject call

Double-tap the **Multi-function button**

Redial last number

Double-tap the **Multi-function button** when not on a call



Adjust volume	Press and hold the Volume up and Volume down button	
Mute	Tap the Volume up button when on a call	
	Skip track forward	Tap the Volume down button
	Skip track back	Tap the Volume up button
Switch between headphone and mobile phone when on call	Tap the Volume down button when on a call	
Voice dial	Double-Tap the Volume down button	

6.1 MULTIPLE CALL HANDLING

Function

Action

End current call and answer incoming call	Tap the Multi-function button
Switch between held call and active call	Press and hold(2 sec)the Multi-function button
Put current call on hold and answer incoming call	Press and hold(2 sec) the Multi-function button
Reject incoming call when on a call	Double-tap the Multi-function button.



7.SUPPORT

7.1FAQ

Q Why do I hear crackling noises?

A Bluetooth is a radio technology that is sensitive to objects between the headset and the connected device. Ensure the headset and the connected device are within range (Up to 10m/33 ft).

Q What is the range of the headset?

A The Z-S1 supports the following maximum ranges: 10m/33ft.

Q Why do I not hear anything?

A You might need to increase the speaker volume, or ensure that the headset is connected to the device.

Q I am having Bluetooth connection problems

A Check your mobile device's Bluetooth menu and delete/forget the headset. Re-connect the headset to your Bluetooth device following the Bluetooth connection instructions.

7.2 HOW TO CARE FOR YOUR HEADSET

- Always store the headset with the power off and safely protected.
- Avoid storage at extreme temperatures (Above 65°C/149°F or below -10°C/14°F). This can shorten battery life and may affect the headset.

8. TECHNICAL SPECIFICATIONS

Z-S1	Specifications
Weight:	13.2g
Dimensions:	L 36mm x W 19.5mm x H 30mm
Cable Length:	500mm
Microphones:	Electret condenser microphone
Speaker:	10mm dynamic speaker
Operation range:	10m/33ft(phone dependent)
Bluetooth version:	4.0
Paired devices:	Connected to two at the same time(MultiUse™)
Supported Bluetooth profiles:	A2DP (v1.2), Hands Free Profile v1.6), Headset profile (v1.2), AVRCP (v1.4)
Talk/Music time:	Up to 6 hours
Standby time:	Up to 4 days
Pairing passkey or pin:	0000

ZONOKI

www.zonoki.cc

Made In China

FCC Warning

This device complies with Part 15 of the FCC Rules. Operation is subject to the following two conditions:

(1) This device may not cause harmful interference, and (2) this device must accept any interference received, including interference that may cause undesired operation.

NOTE 1: Any changes or modifications to this unit not expressly approved by the party responsible for compliance could void the user's authority to operate the equipment.