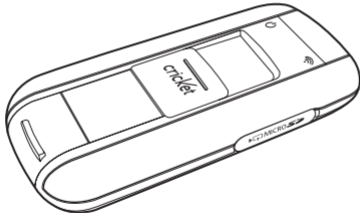


User Manual

Cricket A605 EVDO USB Modem



1. BEFORE USING CRICKET A605	3	Text Message Settings.....	21
About This User's Manual.....	3	Update settings.....	22
Product Overview.....	3	Optimization settings.....	22
Product Package Contents.....	3	Setup optimization configurations.....	23
Introduction to Cricket A605 USB Modem.....	5	Additional Features.....	24
Product Features.....	5	5. INSTALLING CRICKET A605	28
Product Handling.....	6	Recommended System Requirements.....	28
Configuration.....	6	Using the Modem.....	29
2. INSTALLATION AND SETUP FOR		Unplugging or Ejecting the Modem.....	29
CRICKET BROADBAND	7	Remove the Modem from your Computer....	34
Installing Software.....	7	Using the USB Modem Extension	
Setup Program - Windows.....	8	Y Cable	34
Setup Program - Mac OS X.....	11	TROUBLESHOOTING	36
3. USING CRICKET BROADBAND	14	CARE AND MAINTENANCE	37
Features.....	14	WARRANTY	38
Getting Started.....	14	SAR INFORMATION	44
Connecting.....	15	SAFETY INFORMATION	46
Text Messaging.....	17	FCC COMPLIANCE INFORMATION	47
4. CRICKET BROADBAND PREFERENCES	19	U.S.A. U.S.FEDERAL COMMUNICATIONS	
General Preferences.....	19	COMMISSION RADIO FREQUENCY	
WWAN Specific Settings	19	INTERFERENCE STATEMENT	47
VPN Settings.....	20		

About This User's Manual

You will find all the information you need to install and use the Cricket A605 in this user manual. Before using the Cricket A605, you must properly install the modem by closely following the installation instructions.

Instructions

- Install the Cricket Broadband software by inserting the Cricket A605 USB Device into your PC. The installation software is included in the Cricket A605 modem memory. When you insert the Cricket A605 into your computer, the installation process will automatically begin.
- It is highly recommended that you read the safety precautions described in this manual before using the Cricket A605.

Documents Included on Your Modem Memory

- Broadband Usage Conditions, Terms & Conditions
- User Manual

Product Overview

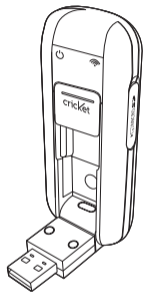
Thank you for purchasing Cricket A605 USB Modem.

The Cricket A605 is a high-speed wireless device that enables your computer to connect to Cricket's high-speed wireless network.

The Cricket A605 is simple to install and use.

Product Package Contents

The following items are included in the product package. If any of the items listed below are missing, please contact the retail location where you purchased the product.



Cricket A605 Wireless
USB Modem



USB Modem Extension
Y Cable



Quick Start Guide

Introduction to Cricket A605 USB Modem

The Cricket A605 is designed for the USB port on your computer, which is available in most PC models. The Cricket A605 can be used to access the Internet, send and receive e-mail and text messages. It is extremely useful when you are away from home, on the road, or wherever wired Internet access is not readily available.

Product Features

- Power management: The Cricket A605 utilizes power management and system overhead reduction functions provided by the USB interface for maximum power savings.
- Antenna design: Efficient, innovative design optimizes data transfer rate and sensitivity to network signals.

- Extension Y Cable connector: Connect the Y cable to two separate USB ports of your computer to deliver sufficient power when needed to increase RF performance, and to solve clearance issues.
- USB Modem that supports Type A USB Port interface.
- Supports North American PCS (1900 MHz), Cellular (800 MHz) and AWS (Tx 1700MHZ, Rx 2100MHZ) bands.
- Utilizes Qualcomm QSC6085 chipset.
- Supports high-speed network technologies.
- Supports Windows 2000, XP, Vista, 7 and Apple Macintosh systems with installed Cricket Broadband software and driver.

Product Handling

- Do not place any adhesive labels on the USB connector. It may leave a sticky residue that can cause problems inside the PC USB port.
- The Cricket A605 USB device should easily slide into the USB port. Do not force the Cricket A605 into the USB port as it may cause damage to the modem and/or the port.
- Keep the Cricket A605 in a dry and clean place. (Storage temperature: -22°F to 149°F [- 30°C to 65°C]). Keep your device away from liquids, dust and excessive heat.

Configuration

To use the Cricket A605, you should install the Cricket Broadband software included in the modem memory and configure the Cricket A605 USB device. See the next section for more information on software installation and USB device configuration.

This section will guide you through the installation and setup process for Cricket Broadband. Before getting started, you should become familiar with the documentation that came with your USB Modem.

Installing Software

Warnings

- Make sure to complete the unplugging/ejection process before removing the Cricket A605. If you remove the device improperly, the modem may be damaged.

Notes

- If you have inserted the device properly, Windows will inform you of the new hardware. Wait until Windows completes the “Found New Hardware” task.

Note: In Windows 2000, several windows similar to “Found New Hardware” window can appear and disappear automatically. In Windows XP, several tool tips similar to the “Found New Hardware” function will appear and disappear in the system tray automatically. In Windows Vista, several tool tips similar to the “Installing device driver software” function will appear and disappear in the system tray automatically. Once hardware detection is complete, you will be prompted to start activation.

- It is normal to hear a short beep sound each time you insert or remove the Cricket A605. It is an audible notification that your PC recognizes the new hardware.

Getting Started (Windows)

To install the Cricket Broadband software:

1. Turn on your computer then close all applications.

2. Insert the Cricket A605 modem into your USB port.
3. Your computer will recognize Cricket A605 modem and start the installation sequence automatically. Below pop-up screen is shown if your OS is Windows Vista or Windows 7. If the program does not launch automatically, go to my computer and select the 'A605CD' drive and double click 'start.exe' program.



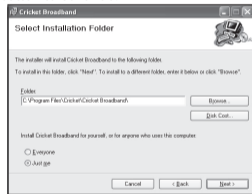
4. Follow the steps in the next section.

Setup Program - Windows

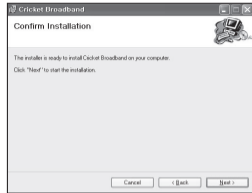
STEP 1: The "Welcome to the Cricket Broadband Setup Wizard" screen appears. Click the [Next] button to continue with the installation process.



STEP 2: You are now ready to select the location on your computer where Cricket Broadband should be installed. It is recommended that you do not modify the default destination folder. Click the [Next] button to continue.

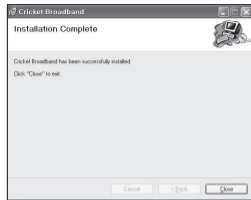


STEP 3: During this step the components of Cricket Broadband product are being installed onto your computer. Installation will occur to the destination folder specified in Step 2.





STEP 4: Installation of Cricket Broadband is now complete. Click the [Close] button to leave the Cricket Broadband setup program and begin using your new software.



*The setup program will automatically create a Cricket Broadband shortcut on your desktop.

STEP 5: Please wait while Cricket A605 is installed and ready to use.

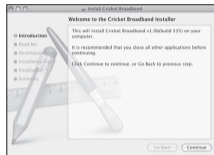


Setup Program - Mac OS X

STEP 1: Insert A605 into the PC, then A605CD disk drive should be automatically mounted. Double click A605CD icon on the Desktop. Double click the Cricket Broadband Setup icon to launch the installer.



STEP 2: Click [Continue] button in the welcome window to proceed with the installation.



STEP 3: The Read Me file appears. Click the [Continue] button.



STEP 4: Click [Install] to begin the standard installation on system volume.

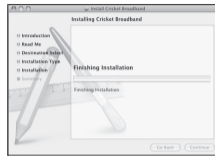


STEP 5: Finally, the Setup Wizard shows confirm window, click the [OK] button to continue.

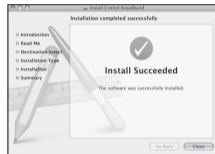


Enter the Name/Password used to log into the computer then click [OK].

STEP 6: Cricket Broadband installation begins.



STEP 7: Installation is now complete. Click the [Restart] button to close the setup wizard. Then OS is restarted.



Today's online world offers more services everyday and Wireless gives you the tools you need to take advantage of the best in connectivity solutions. With Cricket Broadband, enjoy the freedom and convenience of wireless Internet connectivity from your laptop computer!

Features

WWAN (Wireless Wide Area Network, 1xEV-DO/1xRTT/CDMA) Specific Features:

- Configures your PC to use your USB Modem.
- Creates a Data Connection if using an EVDO capable USB Modem.
- Copies utility to create wireless copies of your dial-up connections, if supported by your device.
- Test function for WWAN device.

* A WWAN capable device is required to use the WWAN features. Individual WWAN features are also device dependent as described in the WWAN section above.

Other Features:

- Logs connections used, duration and bytes sent and received.
- It also supports text messaging.
- See the section "Additional Features" for more information about the features of Cricket Broadband.

Getting Started

Double click on the Cricket Broadband icon on your desktop or click on the Windows Start menu and select Cricket Broadband from the list of programs.



About the Wireless Networks View

Cricket Broadband will open the Broadband Networks window by default. This view is where you manage your Broadband connections. The Broadband Networks window displays all currently available network connections.

At a glance you can see the signal strength. Your current connection state and the elapsed time of the connection are displayed along the bottom of the status bar.



Connecting

Once your device is properly configured, connecting to the Internet is as simple as clicking the "Connect" button.

Once connected, the "Connect" button will change to "Disconnect". Simply click this to end your current connection. To connect to any other network shown, select it, and then select "Connect".

The Status Bar

Information regarding your current network connection can be seen in the status bar along the bottom of Cricket Broadband interface. For more information on this status bar, see the section "The Status Bar" in the "Additional Features" section.

Cricket Broadband will display status information at the bottom during the connection process as well as while

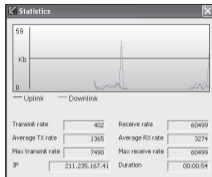
connected.

When not connected, the status text in the lower left corner will display “Not connected” for the currently selected network. The timer will display “00:00:00”. Once connected, the status text will display “Connected” and the timer will begin to run.

Right clicking on the tray icon provides various options and double clicking on it will always show the application. Placing your cursor on it will display the current connection status.

Based on your preferences, your browser, e-mail, or program of your choice can be launched automatically upon connection.

At any time during your connection you can check your current connection speed and throughput stats in the Statistics window. To see this window, select “Statistics” from the “Session” menu.



Using the “Data” connection:

By default Cricket Broadband enables the software for data connections.

If your connection fails when you try to connect, please try to reconnect.

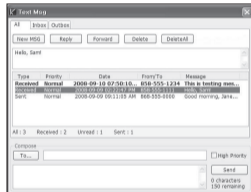
Dormancy:

The data session becomes dormant if you are not sending or receiving any data. As soon as you resume sending or receiving data, the data session will return to an

active state.

Text Messaging

Cricket Broadband supports text messaging for the Cricket A605.



Receiving Text Messages

- All of your text messages will appear in the list box at the top of the text messaging view. By default, all sent and received messages will appear.

- To view only certain messages, click on the message and select “All”, “Inbox” or “Outbox”.

- If you are in the text messaging view and a new message arrives, the message will automatically appear in the list and formatted in bold.

- To view a long text message, select the message in the list view. The details of the message will appear above the list.

- To reply to an incoming message, select the message and press the [Reply] button. The phone number of the sender will auto populate in your new message. Enter your new message and press the [Send] button to send the message.

- To forward an incoming message, select the message and press [Forward] button. The message will auto populate in the send

area below prefixed with "FW:." Press the [Send] button to send the message.

Sending Text Messages

- The Cricket A605 is capable of sending text messages to:
 - A US-based wireless number, enter: 1, then the wireless number.
 - A wireless number outside the US, enter: 011, the country code, then the wireless number.
 - An email account, enter: an email address.
- To send a text message to one or more subscribers, enter their 10-digit mobile numbers separated by semi-colons in the "To..." field. (Ex: 5555555555; 5555555556).
- With some devices that support text messaging contact lists, you may be able

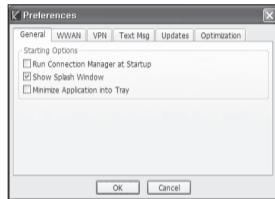
to click on the [To] button to open your contact list.

- The phone number and the message fields are required.
- The character counter allows from 0 to 150 and counts all of the characters typed in the message field. (Spanish: 0~130)
- Click the [Send] button.

General Preferences

Click on [Options], then [Preferences].

General Tab



Run Connection Manager at Startup: If this option is checked the Cricket Broadband starts automatically when Windows starts.

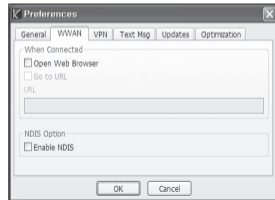
Show Splash Window: Display splash window when Cricket Broadband starts.

Minimize Application into Tray: When you minimize the application it will now appear in the Windows task bar. To restore the application click on Cricket Broadband tray icon, and select [Open].

WWAN Specific Settings

WWAN preferences

This is used to set various WWAN connection settings.



Open Web Browser: When data connection is established successfully, Cricket Broadband executes default web-browser automatically.

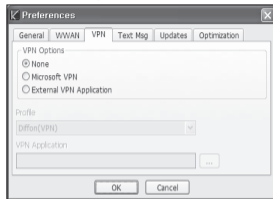
Go to URL: To enable web-browser go to web site you defined using URL field below.

URL: Website URL for starting page of web browser started automatically upon connecting to the Cricket Broadband network.

NDIS Option: When enabled, NDIS provides a internet connection always.

- Click the [Ok] button.

VPN Settings



VPN Options

- **None:** Do not use VPN.
- **Microsoft VPN:** Use VPN client of Microsoft Windows.
- **External VPN Application:** Use other VPN client application provided another vendor.

Profile (Microsoft VPN only)

Select Microsoft VPN Profile.

External VPN Application

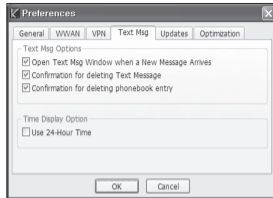
Specify other VPN client application. To choose the application from your local disk, click “...” button.

- Click the [Ok] button.

Text Message Settings

Text Message is a messaging application for your wireless device which allows you to compose and send text messages to other wireless phones.

The Text Msg tab in the preferences dialog allows you to configure certain text message delivery options. These options include:

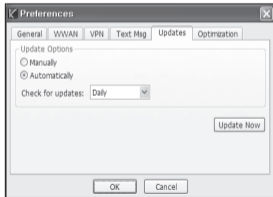


- **Open Text Msg Window when a new text message arrives:** Enable/disable automatic opening of the Text Msg window on arrival of new text messages.
- **Confirmation for deleting a text message:** Confirm deletion of text messages.
- **Confirmation for deleting a phonebook entry:** Confirm deletion of phonebook entries.

- **Use 24-Hour Time:** Select 24-Hour or 12-Hour clock used for Text Message.
- Click the [Ok] button.

Update settings

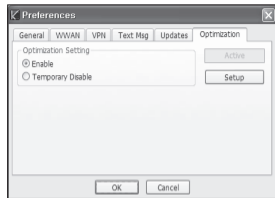
This feature allows Cricket Broadband software to check for software updates and it can be updated manually or automatically.



- **Manually:** If you choose this option, the software will only check for update when you select “Update Now” button or select “Help”, then “Check for updates” from main screen.
- **Automatically:** You can allow the software to automatically check for updates, daily, weekly, or monthly. It only checks when the application is running and when it detects that you are connected and able to access the Internet.

Optimization Settings

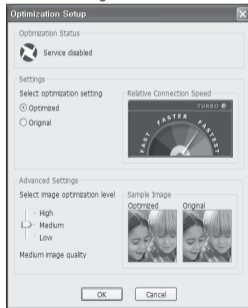
You can change settings for network optimization using this feature.



- **Enable:** If you choose this option, the optimization feature will be enabled. In this case, you can change optimization configurations.
- **Temporary Disable:** Disable optimization feature temporarily. This instant setting will be reverted to “Enable” state when Cricket Broadband is re-launched next time.
- **Setup button:** To setup optimization configurations, click [Setup] button.

Setup Optimization Configurations

This feature allows you to setup detailed optimization configurations.



- **Optimization Status:** Shows current status of optimization operation.
 - Service enabled: Network optimization is running.
 - Service disabled: Network optimization is turned off.
 - Service coordinating...: Optimization configuration changes are applying.
- **Settings:** Turn on/off image optimization function (JPEG image supported only).
 - Optimized: Image optimization is turned on.
 - Original: Image optimization is turned off.
- **Advanced Settings:** Using this option, you can change image optimization level.
 - High: Image optimization level is high. If this level is selected, image quality will be low.
 - Medium: Image optimization level is medium.

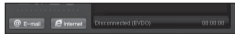
- Low: Image optimization level is low. If this level is selected, image quality will be high.

Additional Features

In addition to the basic features mentioned in previous sections, Cricket Broadband has the additional features listed below.

Status Bar

The details of your current connection can be seen in the status bar at the bottom of Cricket Broadband interface. This status bar is always visible when the interface is fully expanded.



Connection Status

The text on the status bar reflects your current state. During an active connection,

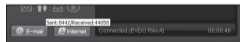
this text will change to “Connected”. If you are not connected, it will display “Disconnected”.

WWAN USB Modem Status Area

The text can change to the following:

- **No Device:** Your WWAN USB Modem is removed from the laptop.
- **Device not activated:** Your USB Modem needs to be activated. Select “Activation” from the Tools menu.

Throughput



The amount of data that you have sent and received since the current network connection was initiated can be seen by holding the mouse over the green up and down arrows on the left side of the

status bar.

Elapsed Time

The amount of time that has elapsed since the current network connection was initiated is tracked on the lower left side of the status bar.

The Session Menu



Connect / Disconnect: You can connect or disconnect the wireless networks.

The Tools Menu

Log: This provides a concise session log of your network activity. Click on a column heading to sort the log. This window also displays the total number of sessions as well

as the total time connected.

The information displayed in the Usage log can be customized using the controls that appear just below the list.



To view only the connection history of a specific network type, check the "Selected connection" checkbox and select the desired type from the drop-down list.

To view only the connections made during a specific interval, check the "Date range" checkbox and specify the date in the "From:" and "To:" fields.

To clear the log, press the Clear button. Note that clearing the log cannot be undone.

Close: Close the log window.

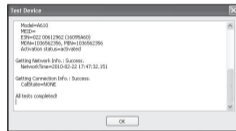
The Options Menu

Activation: Programs the activation code, phone number, and IMSI(MIN) to the USB Modem.



Find Device: Find your modem device again. This is useful if you need to reconfigure Cricket Broadband to use a new USB Modem.

Test WWAN Device: Retrieve and display detailed information about your WWAN device (1xEV-DO/1xRTT/CDMA USB Modem) such as manufacturer, model, version, etc. This information can be valuable when troubleshooting a problem.



Preferences: This is used to select preferences for connection settings.

The "Internet" button

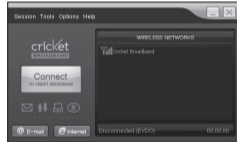
Launches the default web browser on your computer.

The "Email" button

Launches the default email application on your computer.

The Help Menu

The Cricket Broadband has a Help section. Please see the Help section for additional questions.



Recommended System Requirements

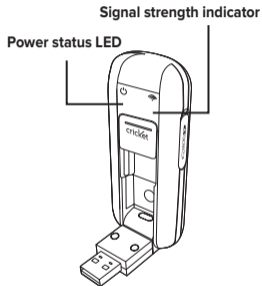
To successfully install and use the Cricket A605 USB device in your PC, the following system specifications are required.

Item	Required Specification
Operating system	Windows® 7 Windows® Vista <u>SP1</u> or greater Windows® XP <u>SP2</u> or greater Windows® 2000 <u>SP4</u> Mac OS X <u>10.3.9</u> or greater
Port	Type A USB port (USB 2.0)
Processor	150MHz or faster
Memory	128 MB
Disk space	32 MB

Dial-up networking	DUN bound to TCP/IP
--------------------	---------------------

* The Cricket A605 is useful for computers that include a USB port. Voice service is not supported.

Using the Modem



Power status LED

- **Green:** Power OK.

- **Red:** Not enough power for current conditions. If you see red on the power status LED it is recommend that you use the USB modem extension Y cable.

Signal strength indicator

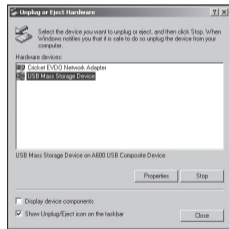
- **0-4:** Weak or no signal strength, 4: high signal strength.

Unplugging or Ejecting the Modem

- Make sure to complete the unplug/eject process on your computer before removing the Cricket A605 from your PC. If you remove the USB device improperly, the product may be damaged.
- Double click the Unplug/Eject Hardware icon in the system tray.

Windows
2000Windows
XPWindows
VistaWindows
7

1) Unplug or Eject Hardware with Windows 2000



- As shown in the above figure, “Cricket EVDO Network Adapter” or “USB Mass

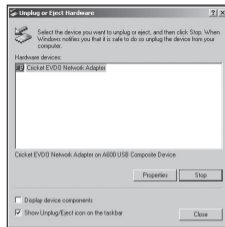
Storage Device” options will be displayed in the Hardware devices list of Windows 2000. Select the “USB Mass Storage Device” and click the “Stop” button.



- Select either of the “USB Mass Storage Device” and click the [OK] button.

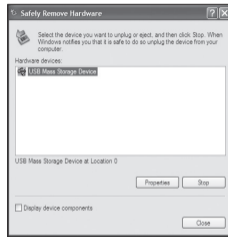


- The dialog box above will appear. Click the [OK] button.

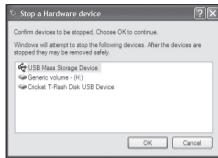


- The above window will appear. It is now safe to unplug the Cricket A605.

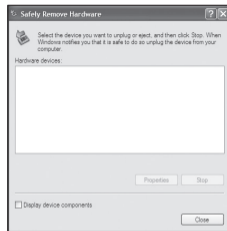
2) Unplug or Eject Hardware with Windows XP



- As shown above, only one “USB Mass Storage Device” option will be displayed in Windows XP. Select “USB Mass Storage Device” and click the [Stop] button.

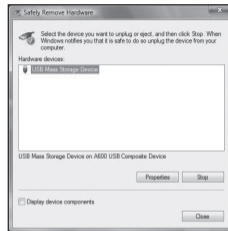


- Then, "USB Mass Storage Device" and click the [OK] button.



- Click the [Close] button. It is now safe to unplug the Cricket A605.

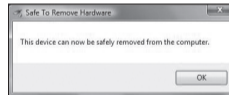
3) Unplug or Eject Hardware with Windows Vista



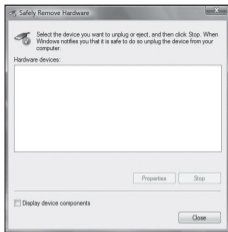
- As shown above, only one "USB Mass Storage Device" option will be displayed in Windows Vista. Select "USB Mass Storage Device" and click the [Stop] button.



- Then, "USB Mass Storage Device" and click the [OK] button.



- The dialog box above will appear. Click the [OK] button.



- Click the [Close] button. It is now safe to unplug the Cricket A605.

Remove the Modem from your Computer

- Remove the Cricket A605 from your laptop. When removing the modem, always grip the sides of the modem and pull carefully.

Using the USB Modem Extension Y Cable

- The Cricket A605 modem package includes an extension USB Y-shaped cable. Although the Y cable is not required for use with your Cricket A605 modem, it offers increased performance for your modem under certain operating conditions. Connect the Y cable to two separate USB ports of your computer to deliver sufficient power when needed to increase RF performance, and to solve clearance issues.

Using the USB Modem Extension Y Cable:

- 1) Plug the single end of the Y-shaped cable into the Cricket A605 modem. [A]
- 2) Depending on the condition you are trying to solve (increased RF performance, or clearance issues), plug

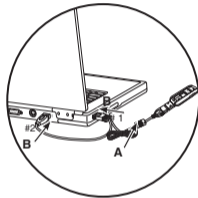
either one of the two connected ends of the USB modem extension Y cable into the Type A USB port(s) on your computer. [B]

Note: The USB modem extension Y cable connector labeled #1, is the primary data power cable used to either extend the Cricket A605 modem away from your computer allowing you to locate the modem in a more optimum signal location or solve any computer USB port clearance issues. The USB modem extension Y cable connector labeled #2, is a power boost Y cable and must be used with connector #1 to provide the modem up to 1Amp of current for use in weaker signal areas. The Y cable must be connected to two separate USB ports.

- 3) The device is connected to and powered by the computer as soon as the USB Y

cable is plugged properly into the appropriate Type A USB port(s).

- 4) Click Connect.



Troubleshooting

- LED indicator not lighting up
 - Check if A605 is inserted into USB port correctly.
 - Re-insert A605 into the USB port (Forcing A605 into the USB port may cause considerable damage).
 - Insert A605 into another USB port.
- Error occurs when running Cricket Broadband
 - Check if Cricket Broadband is installed correctly.
 - Reinstall the Cricket Broadband or Reboot the PC.
- CM displays "No device" on status bar
 - Check to ensure that A605 is inserted in USB port correctly.

- Check if the USB driver is installed correctly.
 - Wait until status changes to "Disconnected", it may take a minute.
- Internet connection fails
 - Check if no signal strength LED.
 - Check if the modem is activated.

If you have additional support questions about your Cricket A605 modem, please call 1-800-CRICKET.

CARE AND MAINTENANCE

Your device is a product of superior design and craftsmanship and should be treated with care. The suggestions below will help you protect your warranty coverage.

- Keep the device dry. Precipitation, humidity and all types of liquids or moisture can contain minerals that will corrode electronic circuits.
- Do not use or store the device in dusty, dirty areas. Its moving parts and electronic components can be damaged.
- Do not store the device in hot areas. High temperatures can shorten the life of electronic devices, damage batteries, and warp or melt certain plastics.
- Do not store the device in cold areas. When the device returns to its normal temperature, moisture can form inside

the device and damage electronic circuit boards.

- Do not attempt to disassemble the device.
- Do not drop, knock, or shake the device. Rough handling can break internal circuit boards and fine mechanics.
- Do not use harsh chemicals, cleaning solvents, or strong detergents to clean the device.
- Do not paint the device. Paint can clog the moving parts and prevent proper operation.
- Use only the supplied or an approved replacement antenna. Unauthorized antennas, modifications, or attachments could damage the device and may violate regulations governing radio devices.

All of the above suggestions apply equally to your device, battery, charger,

or any enhancement. If any device is not working properly, take it to the nearest authorized service facility for service.

WARRANTY

One (1) year Limited Warranty (U.S.)

For products purchased from Cricket or its authorized dealers Cricket warrants that this device ("Product") is free from defects in material and workmanship that result in Product failure during normal usage, according to the following terms and conditions (the "Limited Warranty"):

1. This Limited Warranty for the Product extends for one (1) year beginning on the date of the purchase of the Product.
2. The Limited Warranty extends only to the original purchaser ("Consumer") of the Product and is not assignable or transferable to any subsequent purchaser/

end-user.

3. The Limited Warranty extends only to Consumers who purchase the Product from Cricket or its authorized dealers.
4. During the Limited Warranty period, Cricket will repair or replace, at Cricket's sole option, any defective parts, or any parts that will not properly operate for their intended use with new or refurbished replacement items if such repair or replacement is needed because of product malfunction or failure during normal usage. The Limited Warranty does not cover defects in appearance, cosmetic, decorative or structural items, including framing, and any non-operative parts. Cricket's limit of liability under the Limited Warranty shall be the actual cash value of the Product at the time the Consumer returns the Product for repair,

determined by the price paid by the Consumer for the Product less a reasonable amount for usage. Cricket shall not be liable for any other losses or damages. These remedies are the Consumer's exclusive remedies for breach of the Limited Warranty.

5. Upon request from Cricket, the Consumer must prove the date of the original purchase of the Product by a dated bill of sale or dated itemized receipt.
6. The Consumer shall bear the cost of shipping the Product to Cricket. Cricket shall bear the cost of shipping the Product back to the Consumer after the completion of service under this Limited Warranty.
7. The Consumer shall have no coverage or benefits under this Limited Warranty if any of the following conditions are applicable:

- a. the Product has been subjected to abnormal use, abnormal conditions, improper storage, exposure to moisture or dampness, unauthorized modifications, unauthorized connections, unauthorized repair, misuse, neglect, abuse, accident, alteration, improper installation, or other acts which are not the fault of Cricket, including damage caused by shipping.
- b. the Product has been damaged from external causes such as collision with an object, or from fire, flooding, sand, dirt, windstorm, lightning, earthquake or damage from exposure to weather conditions, an act of God, or battery leakage, theft, blown fuse, or improper use of any electrical source, damage caused by computer or internet viruses, bugs, worms, trojan Horses, cancelbots or damage caused by the connection

- to other products (including but not limited to hardware and software) not recommended for interconnection by Cricket.
- c. the Product serial number plate or the enhancement data code has been removed, defaced or altered.
- d. the defect or damage was caused by the defective function of the cellular system or by inadequate signal reception by the external antenna, or viruses or other software problems introduced into the Product.
8. Cricket does not warrant uninterrupted or error-free operation of the Product. If a problem develops during the Limited Warranty period, the Consumer shall take the following step-by-step procedure:
- The Consumer shall return the Product to the place of purchase for repair or replacement processing.
 - The Consumer shall include a return address, daytime phone number and/or fax number, complete description of the problem, proof of purchase and service agreement (if applicable). Expenses related to removing the Product from an installation are not covered under this Limited Warranty.
 - The Consumer will be billed for any parts or labor charges not covered by this Limited Warranty. the Consumer will be responsible for any expenses related to reinstallation of the Product.
 - Cricket will repair the Product under the Limited Warranty within 30 days after receipt of the Product. If Cricket cannot perform repairs covered under this Limited Warranty within 30 days, or

- after a reasonable number of attempts to repair the same defect, Cricket at its option, will provide a replacement Product or refund the purchase price of the Product less a reasonable amount for usage.
- e. If the Product is returned during the Limited Warranty period, but the problem with the Product is not covered under the terms and conditions of this Limited Warranty, the Consumer will be notified and given an estimate of the charges the Consumer must pay to have the Product repaired, with all shipping charges billed to the Consumer. If the estimate is refused, the Product will be returned freight collect. If the Product is returned after the expiration of the Limited Warranty period, Cricket's normal service policies

- shall apply and the Consumer will be responsible for all shipping charges.
9. You (the Consumer) understand that the Product may consist of refurbished equipment that contains used components, some of which have been reprocessed. the used components comply with Product performance and reliability specifications.
10. Disclaimer of Warranty. EXCEPT AS SET FORTH IN THIS EXPRESS LIMITED WARRANTY, CONSUMER TAKES THE PRODUCT "AS IS," AND CRICKET MAKES NO WARRANTY OR REPRESENTATION AND THERE AER NO CONDITIONS, EXPRESS OR IMPLIED, STATUTORY OR OTHERWISE, OF ANY KIND WHATSOEVER WITH RESPECT TO THE PRODUCT, INCLUDING BUT NOT LIMITED TO ANY IMPLIED WARRANTY

OF MERCHANTABILITY, OR FITNESS FOR A PARTICULAR PURPOSE OR USE; WARRANTIES OF TITLE OR NON-INFRINGEMENT; DESIGN, CONDITION, QUALITY, OR PERFORMANCE OF THE PRODUCT; THE WORKMANSHIP OF THE PRODUCT OR THE COMPONENTS CONTAINED THEREIN; OR COMPLIANT OF THE PRODUCT WITH THE REQUIREMENTS OF ANY LAW, RULE, SPECIFICATION OR CONTRACT PERTAINING THERETO.

11. CRICKET SHALL NOT BE LIABLE FOR SPECIAL, INCIDENTAL, PUNITIVE OR CONSEQUENTIAL DAMAGES, INCLUDING BUT NOT LIMITED TO LOSS OF ANTICIPATED BENEFITS OR PROFITS, LOSS OF SAVINGS OR REVENUE, LOSS OF DATA, PUNITIVE DAMAGES, LOSS OF USE OF THE PRODUCT OR ANY ASSOCIATED

EQUIPMENT, COST OF CAPITAL, COST OF ANY SUBSTITUTE EQUIPMENT OR FACILITIES, DOWNTIME, THE CLAIMS OF ANY THIRD PARTIES, INCLUDING CUSTOMERS, AND INJURY TO PROPERTY, RESULTING FROM THE PURCHASE OR USE OF THE PRODUCT OR ARISING FROM BREACH OF THE WARRANTY, BREACH OF CONTRACT, NEGLIGENCE, STRICT TORT, OR ANY OTHER LEGAL OR EQUITABLE THEORY, EVEN IF CRICKET KNEW OF THE LIKELIHOOD OF SUCH DAMAGES. CRICKET SHALL NOT BE LIABLE FOR DELAY IN RENDERING SERVICE UNDER THE LIMITED WARRANTY, OR LOSS OF USE DURING THE PERIOD THAT THE PRODUCT IS BEING REPAIRED. NOTHING CONTAINED IN THE INSTRUCTION MANUAL SHALL BE CONSTRUED TO CREATE AN EXPRESS

WARRANTY OF ANY KIND WHATSOEVER WITH RESPECT TO THE PRODUCT. ALL IMPLIED WARRANTIES AND CONDITIONS THAT MAY ARISE BY OPERATION OF LAW, INCLUDING IF APPLICABLE THE IMPLIED WARRANTIES OF MERCHANTABILITY AND FITNESS FOR A PARTICULAR PURPOSE, ARE HEREBY LIMITED TO THE SAME DURATION OF TIME AS THE EXPRESS WRITTEN WARRANTY STATED HEREIN.

12. Some states do not allow limitation of how long an implied warranty lasts, so the one (1) year warranty limitation may not apply to you (the Consumer). Some states do not allow the exclusion or limitation of incidental and consequential damages, so certain of the above limitations or exclusions may not apply to you (the Consumer). this Limited

Warranty gives the Consumer specific legal rights and the Consumer may also have other rights which vary from state to state.

13. Cricket neither assumes nor authorizes any authorized service center or any other person or entity to assume for it any other obligation or liability beyond that which is expressly provided for in this Limited Warranty including the provider or seller of any extended warranty or service agreement.
14. This is the entire warranty between Cricket and the Consumer, and supersedes all prior and contemporaneous agreements or understandings, oral or written, relating to the Product, and no representation, promise or condition not contained herein shall modify these terms. the

agents, employees, distributors, and dealers of Cricket are not authorized to make modifications to this Limited Warranty, or make additional warranties binding on Cricket. accordingly, additional statements such as dealer advertising or presentation, whether oral or written, do not constitute warranties by Cricket and should not be relied upon.

15. This Limited Warranty allocates the risk of failure of the Product between the Consumer and Cricket. the allocation is recognized by the Consumer and is reflected in the purchase price.
16. IF ANY PORTION OF THIS LIMITED WARRANTY IS HELD ILLEGAL OR UNENFORCEABLE BY REASON OF ANY LAW, SUCH PARTIAL ILLEGALITY OR UNENFORCEABILITY SHALL NOT AFFECT THE ENFORCEABILITY FOR THE

REMAINDER OF THIS LIMITED WARRANTY WHICH PURCHASER ACKNOWLEDGES IS AND WILL ALWAYS BE CONSTRUED TO BE LIMITED BY ITS TERMS OR AS LIMITED AS THE LAW PERMITS.

SAR INFORMATION

THIS MODEL PHONE MEETS THE GOVERNMENT'S REQUIREMENTS FOR EXPOSURE TO RADIO WAVES.

Your wireless phone is a radio transmitter and receiver. It is designed and manufactured not to exceed the emission limits for exposure to radiofrequency (RF) energy set by the Federal Communications Commission of the U.S. Government. These limits are part of comprehensive guidelines and establish permitted levels of RF energy for the

general population. The guidelines are based on standards that were developed by independent scientific organizations through periodic and thorough evaluation of scientific studies. The standards include a substantial safety margin designed to assure the safety of all persons, regardless of age and health. The exposure standard for wireless mobile phones employs a unit of measurement known as the Specific Absorption Rate, or SAR. The SAR limit set by the FCC is 1.6 W/kg. * Tests for SAR are conducted with the phone transmitting at its highest certified power level in all tested frequency bands. Although the SAR is determined at the highest certified power level, the actual SAR level of the phone while operating can be well below the maximum value. This is because the phone is designed to operate at multiple power levels so as to use only the power required

to reach the network. In general, the closer you are to a wireless base station antenna, the lower the power output. Before a phone model is available for sale to the public, it must be tested and certified to the FCC that it does not exceed the limit established by the government adopted requirement for safe exposure. The tests are performed in positions and locations (e.g., at the ear and worn on the body) as required by the FCC for each model. The highest SAR value for this model modem when tested for use near the body, as described in this user guide, is 1.14 W/Kg. While there may be differences between the SAR levels of various phones and at various positions, they all meet the government requirement for safe exposure. The FCC has granted an Equipment Authorization for this model phone with all reported SAR levels evaluated as in compliance with the FCC RF exposure

guidelines. SAR information on this model phone is on file with the FCC and can be found under the Display Grant section of <http://www.fcc.gov/oet/fccid> after searching on [FCC ID: Q78-A605](http://www.fcc.gov/oet/fccid). Additional information on Specific Absorption Rates (SAR) can be found on the Cellular Telecommunications Industry Association (CTIA) web-site at <http://www.wow-com.com>. * In the United States and Canada, the SAR limit for mobile phones used by the public is 1.6 watts/kg (W/kg) averaged over one gram of tissue. The standard incorporates a substantial margin of safety to give additional protection for the public and to account for any variations in measurements.

SAFETY INFORMATION

SAFETY INFORMATION FOR FIXED WIRELESS TERMINALS POTENTIALLY EXPLOSIVE ATMOSPHERES

Turn your phone OFF when in any area with a potentially explosive atmosphere and obey all signs and instructions. Sparks in such areas could cause an explosion or fire resulting in bodily injury or even death.

INTERFERENCE TO MEDICAL DEVICES

Certain electronic equipment may be shielded against RF signal from your wireless phone. (pacemakers, Hearing Aids, and so on) Turn your phone OFF in health care facilities when any regulations posted in these areas instruct you to do so. RF signals may affect improperly installed or inadequately shielded electronic system in motor vehicles.

EXPOSURE TO RF ENERGY

Use only the supplied or an approved replacement antenna. Do not touch the antenna unnecessarily when the phone is in use. Do not move the antenna close to,

or touching any exposed part of the body when making a call.

NEAR BODY OPERATION

This device was tested for typical near body operations with the back of the phone kept 0.5 cm from the body. To maintain compliance with FCC RF exposure requirements, it must have a minimum distance including the antenna of 0.5 cm from the body during normal operation

FCC COMPLIANCE INFORMATION

This device complies with Part 15 of FCC Rules.

Operation is subject to the following two conditions:

(1) This device may not cause harmful interference, and

(2) This device must accept any interference received. Including interference that may cause undesired operation.

U.S.A. U.S.FEDERAL COMMUNICATIONS COMMISSION RADIO FREQUENCY INTERFERENCE STATEMENT

INFORMATION TO THE USER

NOTE : This equipment has been tested and found to comply with the limits for a Class B digital device pursuant to Part 15 of the FCC Rules. These limits are designed to provide reasonable protection against harmful Interference in a residential installation This equipment generates, uses, and can radiate radio frequency energy and, if Not installed and used in accordance with

the instructions, may cause harmful Interference to radio communications. However, there is no guarantee that interference will not occur in a particular Installation. If this equipment does cause harmful interference to radio or television reception, which can be determined by turning the equipment off and on, the user is encouraged to try to correct the interference by one or more of the following measures:

- *- Reorient or relocate the receiving antenna. Increase the separation between the equipment and receiver.
- *- Connect the equipment into an outlet of a circuit different from that to which the receiver is connected.
- *- Consult the dealer or an experienced radio/TV technician for assistance.

Changes or modification not expressly

approved by the party responsible for Compliance could void the user's authority to operate the equipment. Connecting of peripherals requires the use of grounded shielded signal cables.