

CDMA2000 1X EV-DO Wireless Data Terminal User Guide

This User Guide is used for Wireless Data Terminal of AC8710.

Copyright Statement

Copyright © 2009 by ZTE Corporation

All rights reserved.

No part of this publication may be excerpted, reproduced, translated or utilized in any form or by any means, electronic or mechanical, including photocopying and microfilm, without the prior written permission of ZTE Corporation.

ZTE Corporation reserves the right to make modifications on print errors or update specifications in this manual without prior notice.

Table of Contents

1. Introduction.....	1
2. Precautions.....	1
3. Appearance	2
3.1 Introduction.....	2
3.2 Insert R-UIM Card.....	2
3.3 Operation Guide of Data Cable.....	3
4. Install and Uninstall.....	4
4.1 System Requirements.....	4
4.2 Installation Guide.....	4
4.2.1 Install.....	4
4.2.2 Uninstall.....	8
4.3 Manually Install Through Other USB Port	8
4.3.1 Windows 2000.....	8
5. Run the Application	9
6. Connect/Disconnect.....	11
7. Connection Records.....	12
8. Voice Call.....	13
9. Call History	16
10. Short Message.....	17
11. Phone Book.....	19
12. Setting.....	20
13. Help	23
14. Connect to the Website	23
15. Trouble-shooting.....	23
16. FCC Regulations.....	27

1. Introduction

Thank you for choosing AC8710 CDMA2000 1X EV-DO Wireless Data Terminal (hereinafter referred to as Data Terminal) of ZTE Corporation.

The Data Terminal equips with a standard USB interface and supports both CDMA2000 1X EV-DO and CDMA2000 1X network. In the area where there is signal, it allows you to go surfing on the Internet, send&receive short messages, and make&receive phone calls.

The Data Terminal adopts two designing options: R-UIM and Built-in UIM, which make your operation more flexible.

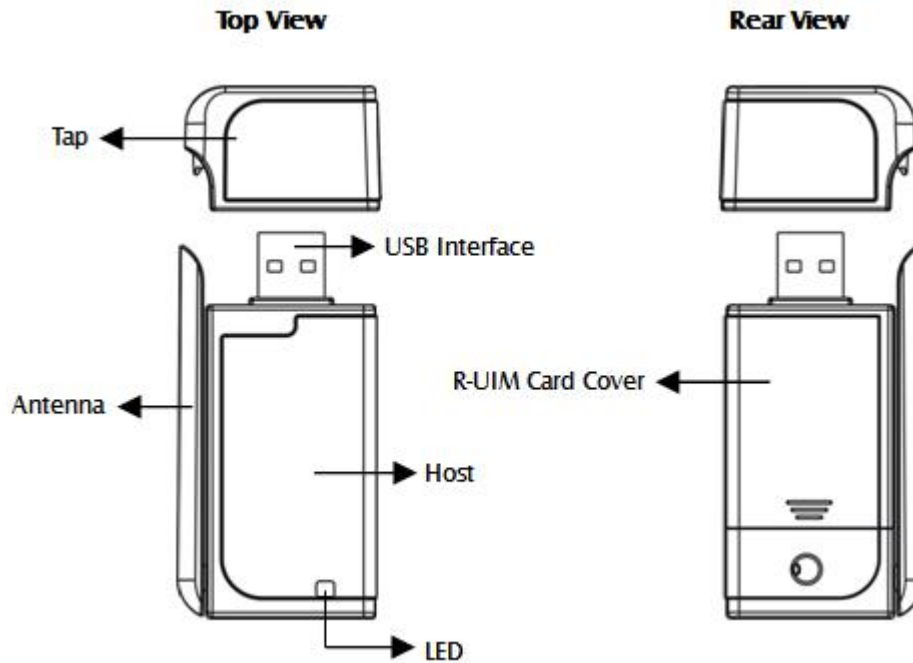
The pictures in this guide are only used to demonstrate your Data Terminal's functions, so they are maybe different from what you see on your Data Terminal. Please refer to your Data Terminal if they are differences.

2. Precautions

- Use the original accessories or those authenticated by the manufacturer. Using any unauthenticated accessories may affect the data terminal's performance, violate the warranty provisions or relevant national regulations about telecom terminals, or even cause body injury.
- Do not disassemble, modify, frequently pull/plug the antenna, stretch, rotate or bend the antenna with great force.
- Before pulling out the data terminal, please use Windows safely removing the hardware and make sure to exit the application. Do not directly pull out the terminal to avoid the damage of data terminal or the influence on the normal operation of operating system.
- Do not forcefully plug/pull the data terminal to avoid the damage of connector.
- Do not use your data terminal near weak signal or high-precision electronic devices. Radio wave interference may cause misoperation of electronic devices or other problems.
- Turn off your data terminal on airplane where it's forbidden to use it. The data terminal may affect the normal operation of electronic devices, therefore please follow the relevant regulations when using your mobile phone on airplane.
- Turn off your data terminal in hospital where it's forbidden to use it. The data terminal may affect the normal operation of medical apparatus, therefore please follow the relevant regulations when using your mobile phone in hospital.
- Please do not use the data terminal near flammable or explosive materials, otherwise it might cause failure or fire.
- Keep your data terminal away from water. This may cause overheating or failure if water or any other kind of liquid enters your mobile phone. Please do not use your data terminal near high temperature, damp or dusty place.
- Keep your data terminal away from children to avoid shock, plunge or impact. It may cause body injury when the data terminal is used as a toy.

3. Appearance

3.1 Introduction



LED status descriptions:

LED	Inserting the data terminal	Network Registered		Service available or Searching for the network		Upon an incoming call(as the terminal supports voice call)	
		EV-DO	1X	EV-DO	1X	EV-DO	1X
Yellow	ON	OFF	Slow Flash	OFF	Quick Flash	OFF	Flash
Green	ON	Slow Flash	OFF	Quick Flash	OFF	Flash	OFF

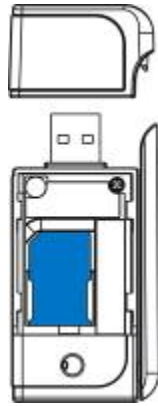
3.2 Insert R-UIM Card

Note: If your data terminal doesn't need R-UIM card, please skip this section.

1. Pull out the tap;
2. Take out the R-UIM card cover in the direction indicated by the arrow;



3. Insert R-UIM card as below figure;



4. Push back R-UIM card cover in the direction indicated by the arrow.



3.3 Operation Guide of Data Cable

Generally, the Data Terminal could be directly connected with USB port. You could also connect the Data Terminal with PC by using the accompanying data cable, as shown in the following figure. Connect Interface ① with Data Terminal, and interface ② with PC's USB port. If the power supply from USB port is insufficient, connect both interface ② and ③ with USB port together.



4. Install and Uninstall

4.1 System Requirements

The Data Terminal supports the following operating system:

- Windows 2000
- Windows XP
- Windows Vista

PC minimum configurations:

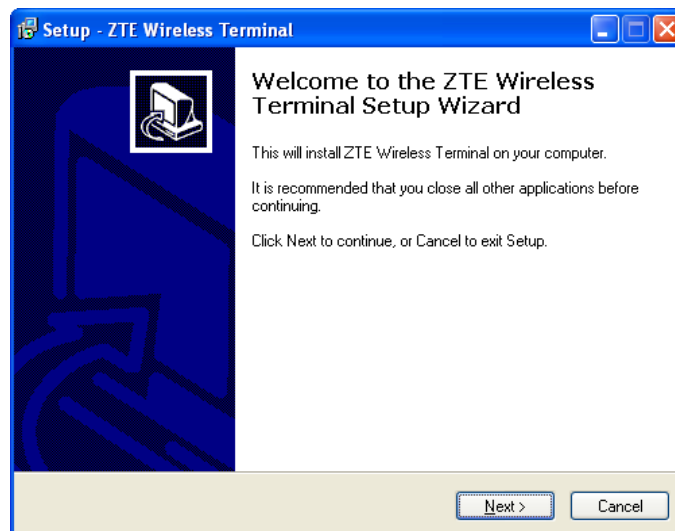
CPU	Pentium-II/233MHz
USB interface	2.0 (USB1.0 and 1.1 compatible)
Optical Drive	CD-ROM (for installation only)
Memory	64 MB
Disk Space	50 MB (used for installation of application)

4.2 Installation Guide

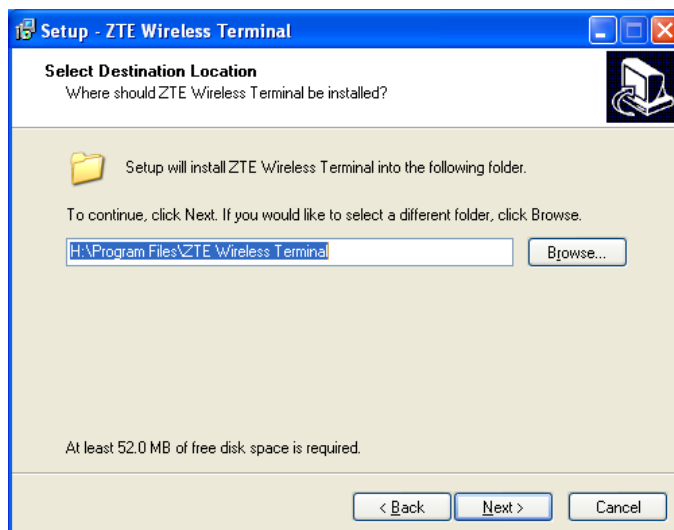
Take Windows XP for example. Under other operating systems, please refer to the installation under Windows XP. Do not insert the Data Terminal before installation.

4.2.1 Install

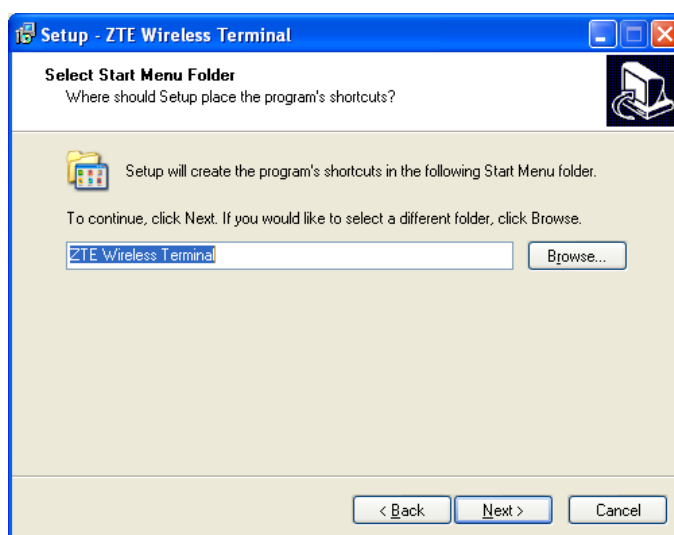
1. Find “setup.exe” firstly in the Data Terminal CD-ROM, double-click it to display the Welcome picture, and then click “Next”;



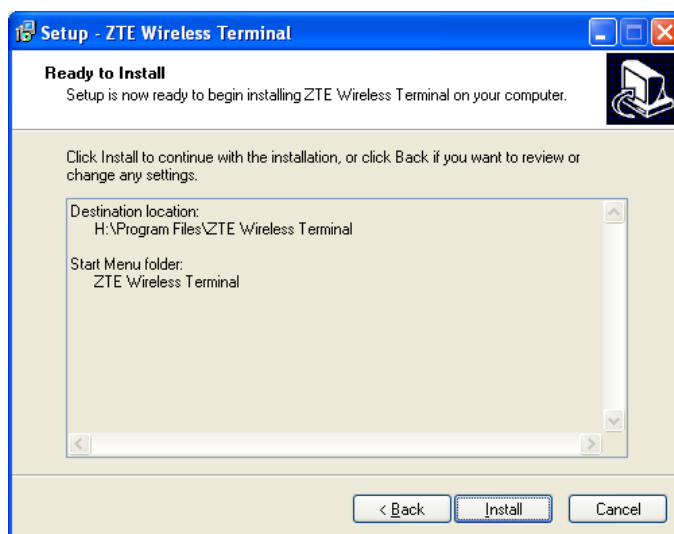
2. Select the location where you want the program to be installed, and then click “Next”;



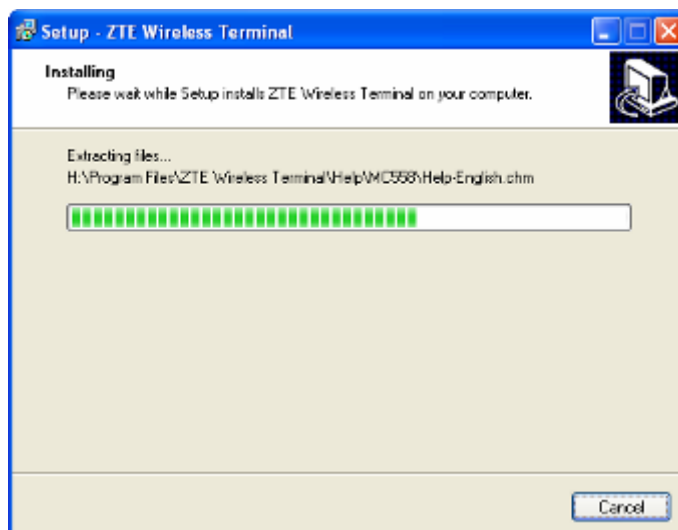
3. Select Start Menu folder, and then click “Next”;



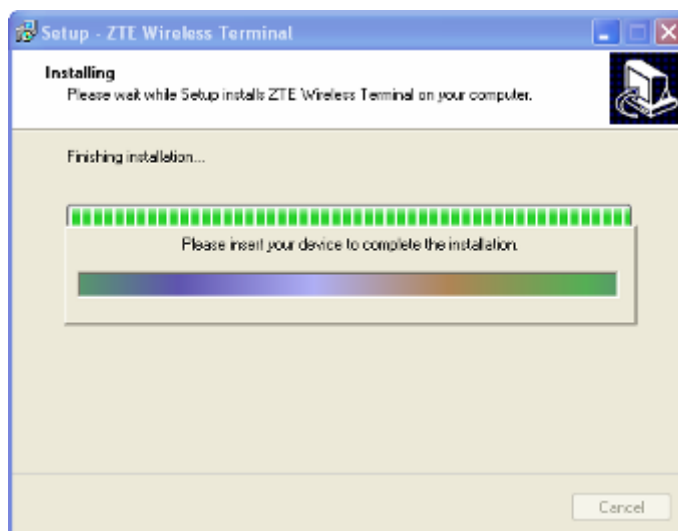
4. When you see the window below, please click “Install”;



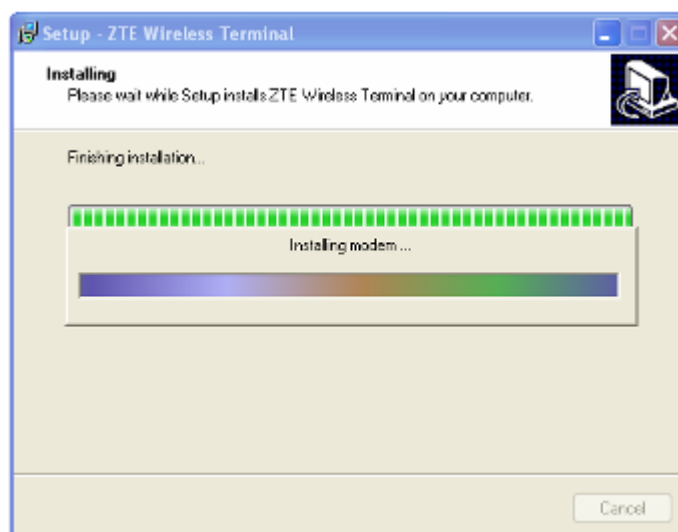
5. Please wait for installation;

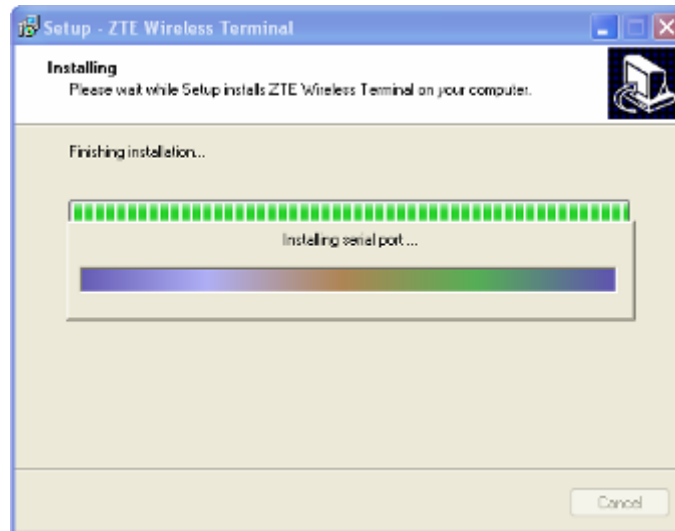


6. Please insert the Data Terminal into USB interface if the system prompts you to insert the hardware; (If it has been inserted, please unplug it and insert again.)

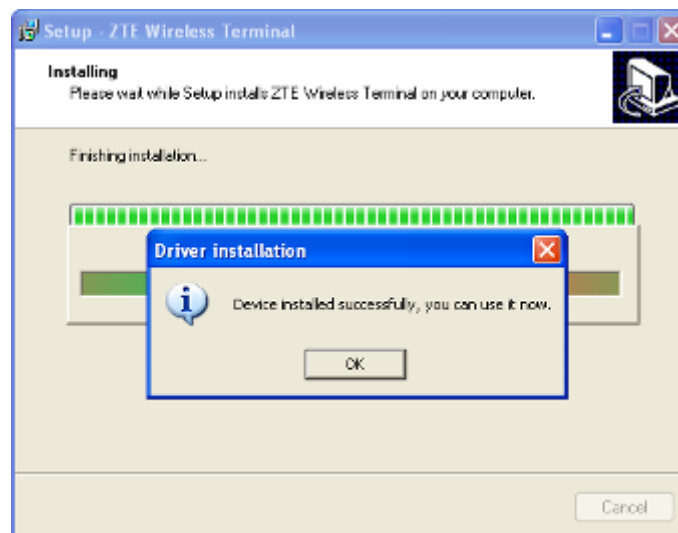


7. The system shall find the new hardware and install the driver automatically. Just wait a minute;





8. The driver is installed successfully. Please click "OK";

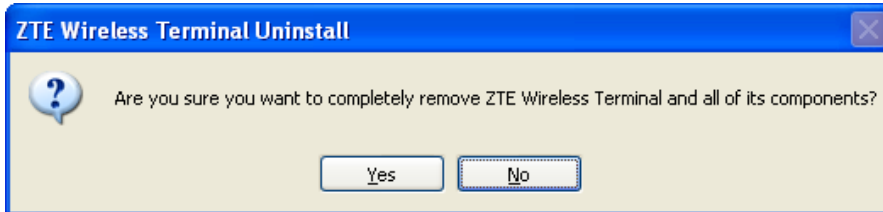


9. Click "Finish" to close the last screen of the wizard. Now you can start the application for data terminal.

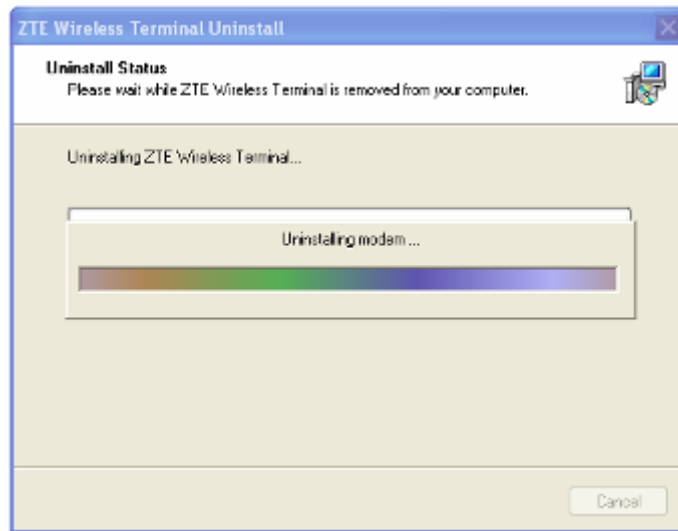


4.2.2 Uninstall

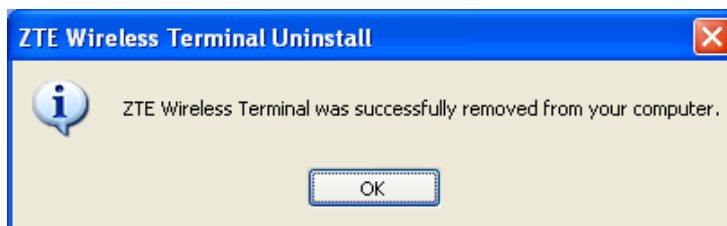
1. Select **Start -> All Programs -> ZTE Wireless Terminal -> Uninstall ZTE Wireless Terminal**. Click **“Uninstall ZTE Wireless Terminal”**, and you will be asked if you want to remove the program. Click **“Yes”**.



2. Please wait.



3. Click **“OK”** when un-installation is completed.



4.3 Manually Install Through Other USB Port

If the data terminal doesn't work through other USB ports after the driver is installed successfully through a USB port, you could manually install the driver in the following method. Please make sure to quit other applications during the installation.


4.3.1 Windows 2000

Insert the data terminal to another port, and the system will find new hardware and automatically install the driver. When the following prompt appears, click **“Yes”**. Now you can start the


application for data terminal.







5. Run the Application

After the application is installed successfully, the application icon  will appear on your desktop. Double-click this icon or select from **Start -> Programs ->ZTE Wireless Terminal -> ZTE Wireless Terminal**. Run the application to display the following user interface.



Press  to display other icons. The icons on the interface are used to access the function, which indicate as below:

-  Connect/Disconnect
-  Open URL
-  Voice Call
-  Call History



Short Message



Phone Book



Connection Record



Setting



Help

Status Bar:

	EV-DO indication		Call indication
	1X indication		Missed call indication
	1X/DO indication		Unread message indication
	Signal strength indication. The more bars there are, the stronger signals are.		Inbox full indication
	CDMA network unavailable		No R-UIM card inserted indication
	Connection indication		R-UIM card inserted indication
	Sleep indication		Roaming indication

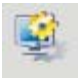

Note:

*Some features like **Voice Call**, **Call History**, **Short Message**, and **Phone Book** may not be supported by your Data Terminal; the corresponding icons will not appear in the main window.*


6. Connect/Disconnect



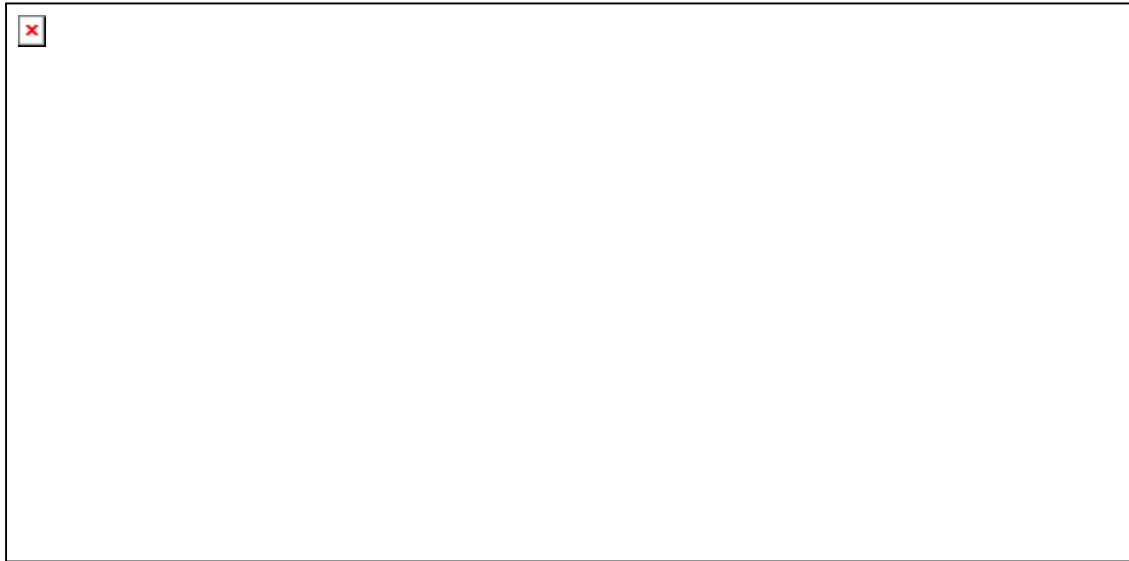
Connect


- ✧ Click  icon to set the relevant parameters. For details, please refer to Chapter 12 “Setting” for details.
- ✧ Click  icon at the left-up corner of the interface.
- ✧ After connecting to Internet, the current network information will appear on the interface. Double-click any place in the display area to view the connection drawing.
- ✧ Please connect the Data Terminal and PC with USB extension cable under weak signal to obtain the optimal performance. If necessary, adjust the Data Terminal's position and the antenna's direction.

Disconnect

After connecting to Internet, click the rotating icon  at the left-up corner of the interface.

7. Connection Records



Click  icon to view connection records. Connection records save the previous relevant information including Start at, Duration and Transmit bytes, which will help you know the status easily.

By switching among “List”, “Monthly” and “Statistic”, you could inquire the records every time, by month or by time.


Note:

The relevant information contained in connection records are just for user’s reference rather than the charging basis.

Delete Connection Records

Click  button to delete the records you have selected on the interface.


Clear Connection Records

Click  button to delete all the records.




Note: If your data terminal doesn’t support **Voice Call**, **Call History**, **Short Message**, and **Phone Book** features, please skip 8-11 sections.

8. Voice Call





Click  to enter voice call interface.


Make a call

- ✧ Click the digits in the right side of the interface, or input the digits directly from keyboard. Press  button or press “Backspace” to delete the previous input digit; press  button or press “Esc” to clear all the inputs.
- ✧ Click  button in the right side of the interface or press “Enter” to make a call.

Receive a call

- ✧ When there is an incoming call, your computer will alert and the incoming caller ID will appear on the interface.
- ✧ Click  button in the right side of the interface or press “Enter” to receive the call.
- ✧ Press  button or press “Esc” to reject the call.

Redial the latest outgoing call

- ✧ Click  button in the right side of the interface.

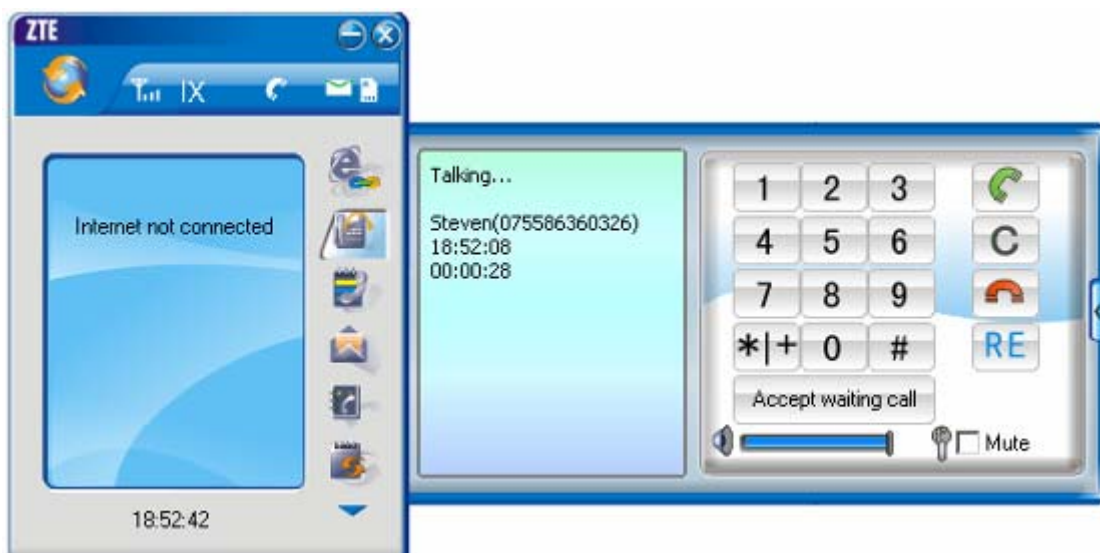
Call Waiting

During a call, you could select to answer the second incoming call, and then you could switch

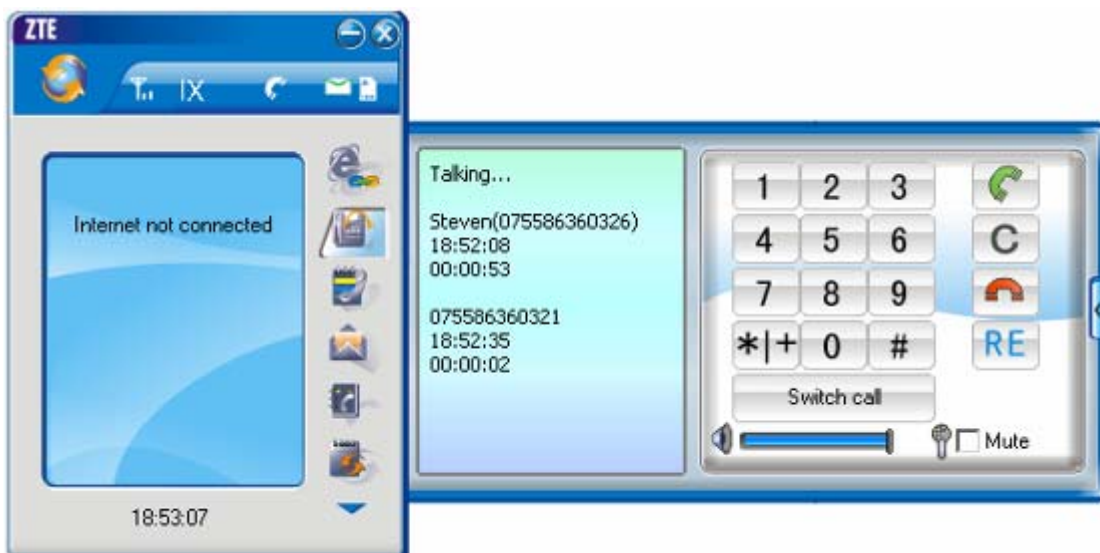
between the two incoming calls.

Please firstly apply for this service from your local telecom operator.

- ◇ During a call, if there is a new incoming call, a pop-up window will prompt you that you have the second incoming call.
- ◇ If you select to answer, please click “Accept waiting call” button. The previous call won’t be ended, but temporarily paused.



- ◇ You could switch between two incoming calls by clicking “Switch call”.



Three-way Call

This function allows for the call among three parties. Please firstly apply for this service from your local telecom operator.

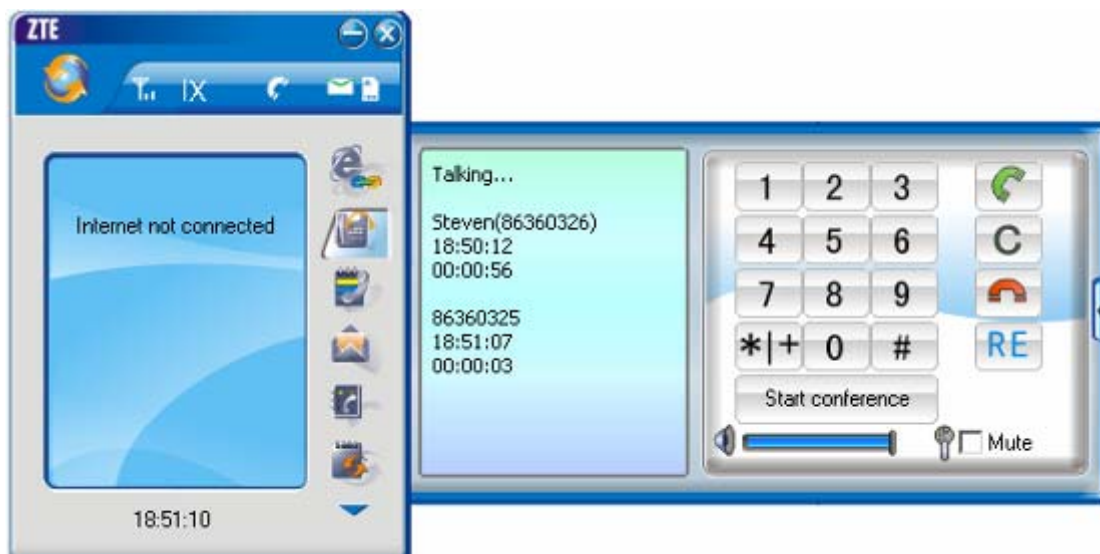
Note:

You need set “Show 3 way call button during calling”. Please perform the setting according to chapter 12.

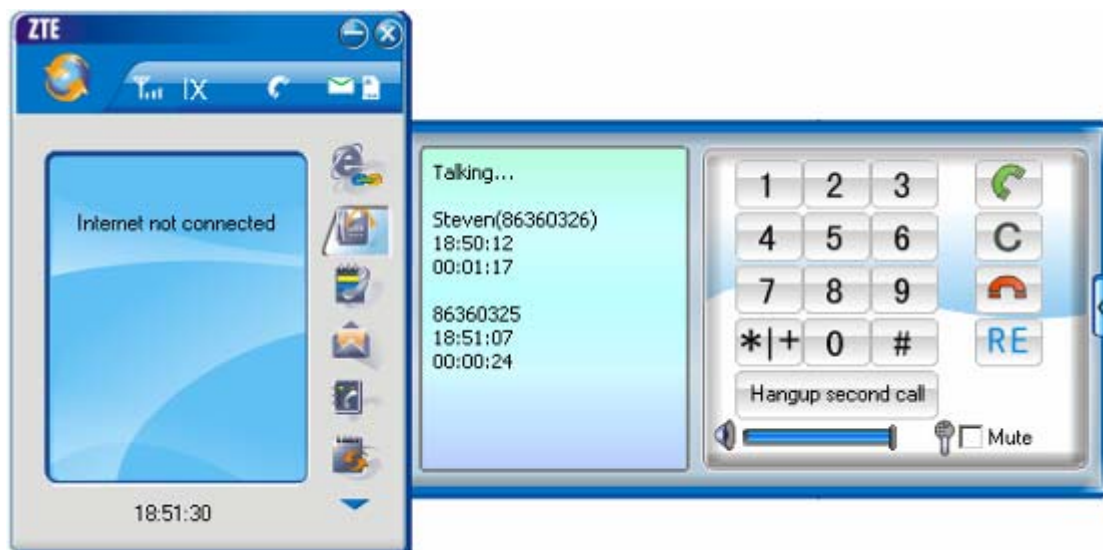
- ◇ You could click “Dial second call” button during a call, input the third-party number in the pop-up window, and then press “OK” button to call the third party. In this case, the original call won't be ended, but temporarily paused.



- ◇ If the third party answers the call, click “Start conference” to enter the conference call.




- ✧ During three-way conference call, click “Hangup second call” button to end the conference call, and return to the original call.








9. Call History



Click  icon to view the call history. The outgoing/incoming calls are saved in call history, including missed calls; incoming calls, outgoing calls, and talk duration. You could select the type you want to view.

Missed/Accepted/Called Calls

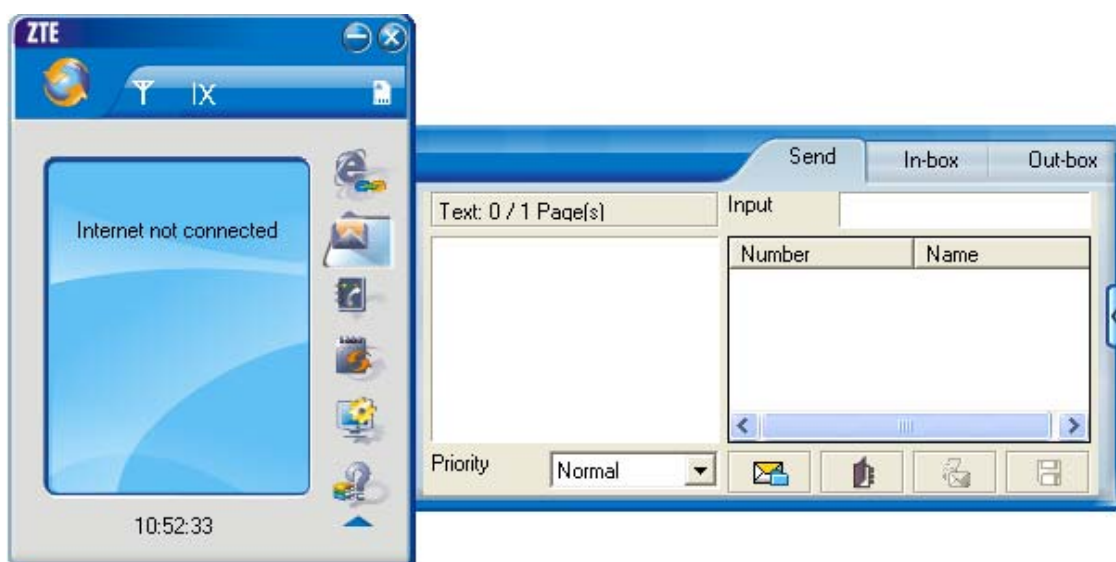
- ✧ Click  button to delete your selected record.
- ✧ Click  button to delete all records in Missed/Incoming/Outgoing catalog.


- ✧ Click  button to dial the number.
- ✧ Click  button to send a short message to this number.
- ✧ Click  button to save this number to the phone book.

Statistic





- ✧ Click  button to clear the talk duration.

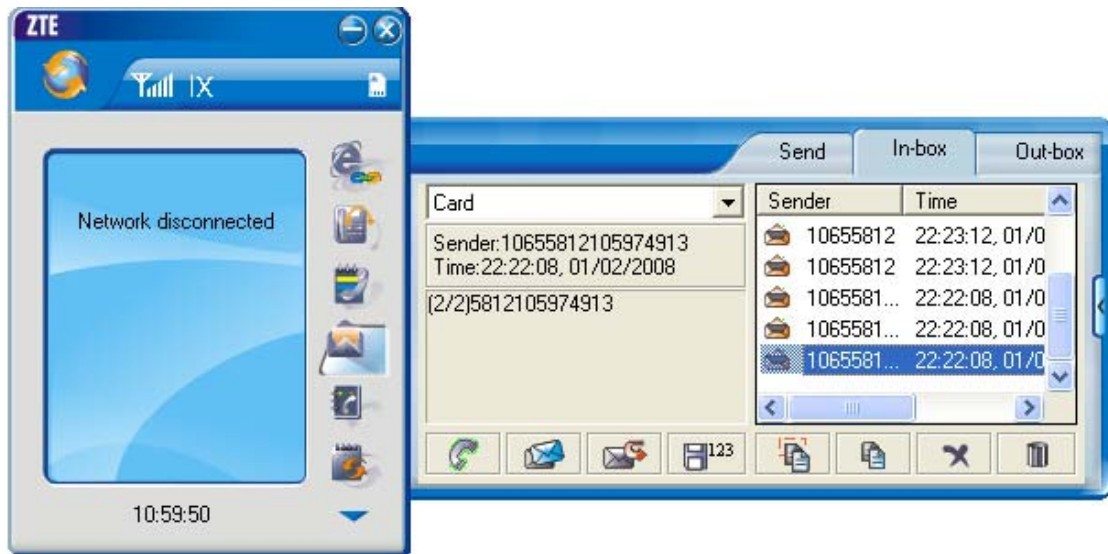
10. Short Message



Click  icon to enter Short message interface.

Send a Message

- ✧ Input the text to send, or click  button to select the preset message to send.
- ✧ Input the recipient's number or click  button to select the recipient from phone book.
- ✧ Add more recipients if you like.
- ✧ Select priority.
- ✧ Click  button to send a message.
- ✧ Click  button to save the text into outbox.




The received messages will be saved in the Data Terminal In-box. After the Data Terminal In-box is full, the system will automatically move the messages in the Data Terminal In-box to the PC In-box, and clean out the Data Terminal In-box.

You could copy the messages from the Data Terminal In-box to PC In-box by selecting Copy or Copy All; you could also copy the messages from PC In-box to the Data Terminal In-box by selecting Copy.


The sent messages and unsent but saved messages will be all saved in the Out-box.

Take Data Terminal In-box as an example:


Reply

- ✧ Click  to reply to the sender.

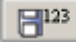
Forward

- ✧ Click  to forward this message to other recipients.

Dial Sender's Number

- ✧ Click  to dial the sender's phone number.


Save Sender's Number

- ✧ Click  to save the sender's number into phone book.


Delete

- ✧ Click  to delete your selected records.


Clear

- ✧ Click  to delete all the records in the inbox.

Copy


- ✧ Click  to copy your selected record into PC.

Copy All

- ✧ Click  to copy all the records from the data terminal to PC.

11. Phone Book




Click  to view the Phone book. You could select to save the contacts either in the PC(computer)、Normal (data terminal)、R-UIM Card (If your data terminal needs R-UIM card) or in the Emergent. Click the pull-down menu to select the storage location.


Add

- ✧ Click  then input the contents and select “OK” to add a new contact.


Modify

- ✧ Click  then modify the contents and select “OK” to modify the contact information.


Dial from the phone book

- ✧ Click  to dial your selected phone number.

Send messages from the phone book

- ✧ Click  to compose the text. You could send the message to multiple recipients.

Search for contacts

- ✧ Click  to search for the contacts by name or number.

Delete

- ✧ Click  to delete your selected contact.


Delete All

- ✧ Click  to delete all the contacts.

Copy


- ✧ Click  to copy your selected contacts to other storage location.

Copy All

- ✧ Click  to copy all contacts to other storage location.

12. Setting



- Click  to enter the setting interface.

Network Connection Setting

- ✧ Set up the relevant parameters, work mode on the “Network” interface.
- ✧ After the setting, click “Apply” button to save the settings on the current interface.
- ✧ Click “Default” button and then “Apply” button to restore the settings on the current interface to factory default.

Note:

The default network setup parameters are as below. Different regions may have different network setup parameters, so please consult your local telecom operator.

Phone: #777

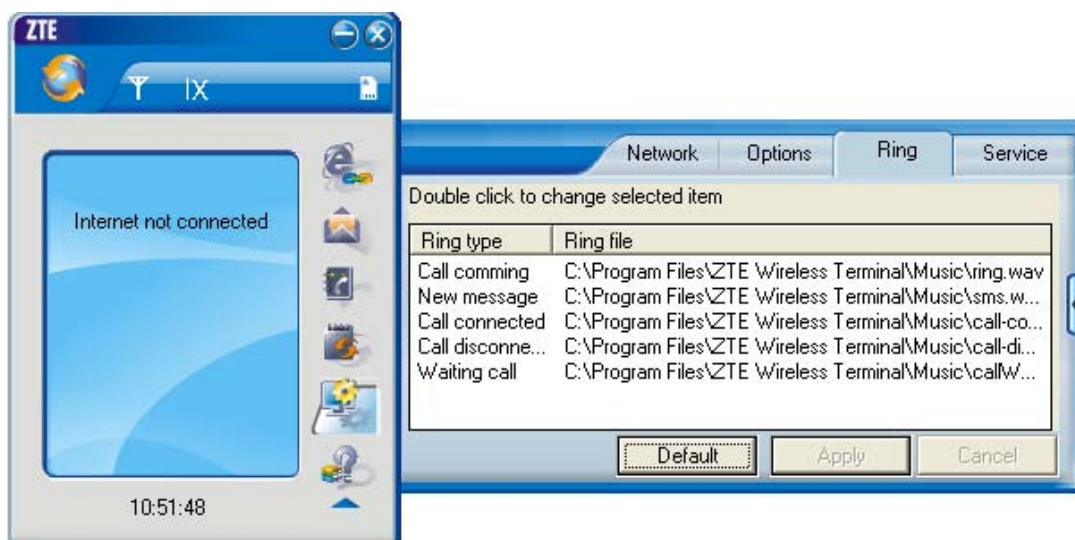
User: card

Password: card



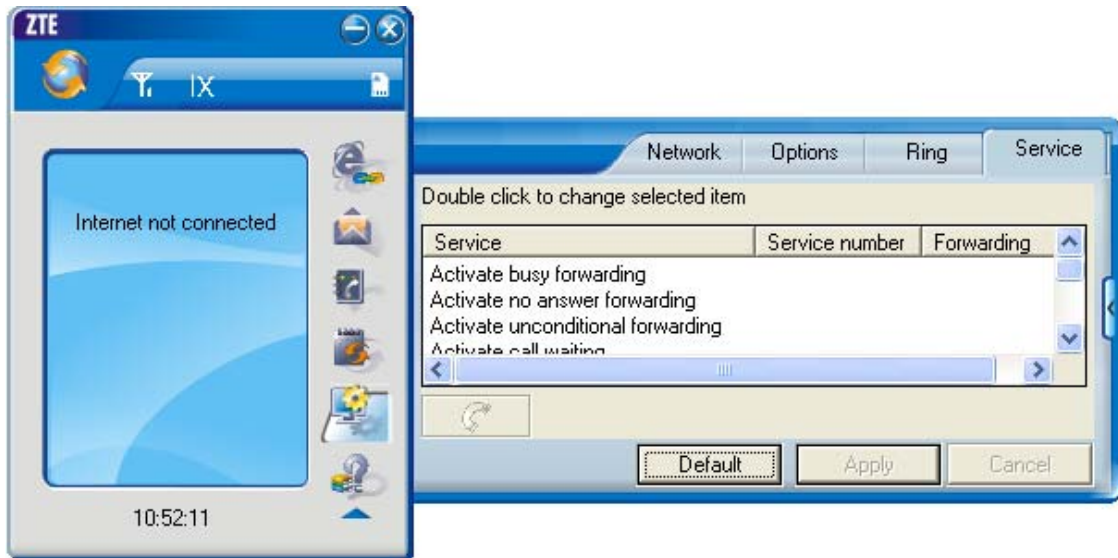
Other Setting:

- ✧ Click “Options” to switch the interface, and you could set URL and select the skin, language, etc. If you want to use conference call, please select “Show 3 way call button during calling”;
- ✧ After the setting, click “Apply” button to save the settings on the current interface.
- ✧ Click “Change Password” button to set lock device. The password is required when you start the application. The setting has nothing to do with "Default" button.
- ✧ If your data terminal needs R-UIM card, please click the button “Enable Pin”. PIN code is needed when the application is started. The setting has nothing to do with "Default" button.
- ✧ Click “Default” button and then “Apply” button to restore the settings on the current interface to factory default.




Select ring tone

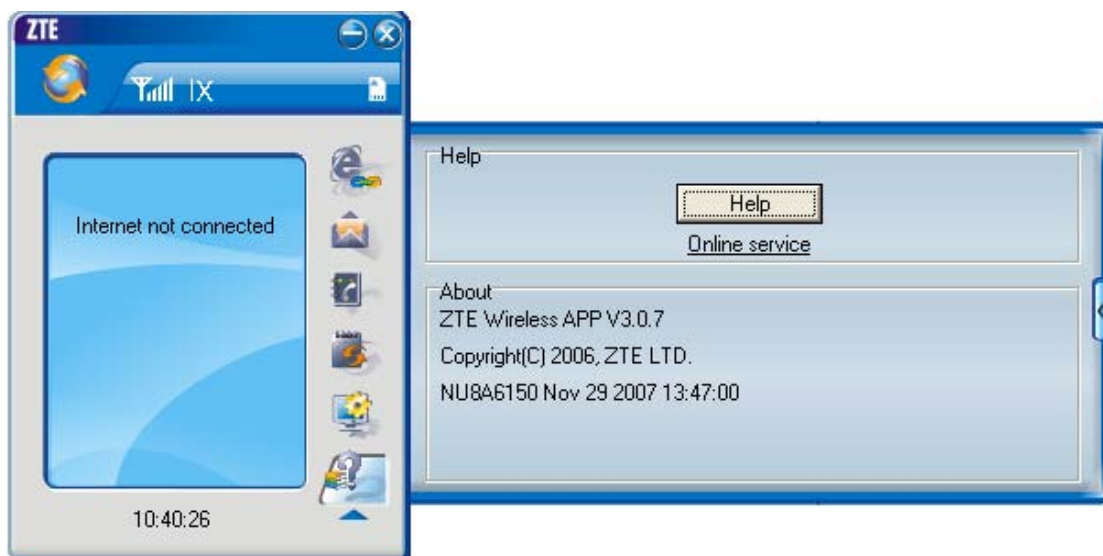
- ✧ After clicking “Ring”, you could set different ring tones for Call coming, New message, Call connected, Call disconnected and Waiting call.
- ✧ After the setting, click “Apply” button to save the settings on the current interface.
- ✧ Click “Default” button and then “Apply” button to restore the settings on the current interface to factory default.




Supplementary Services

- ✧ After clicking “Service”, you could set “Unconditional forwarding”, “Busy Forwarding”, “No answer forwarding”, “Call waiting”, etc. Double-click the selected option to modify the service number and forwarding number.
- ✧ After the setting, click  button to send the corresponding request to the network system.
- ✧ After the setting, click “Apply” button to save the settings on the current interface.
- ✧ Click “Default” button and then “Apply” button to restore the settings on the current interface to factory default.


13. Help



Click  button to view the help file.

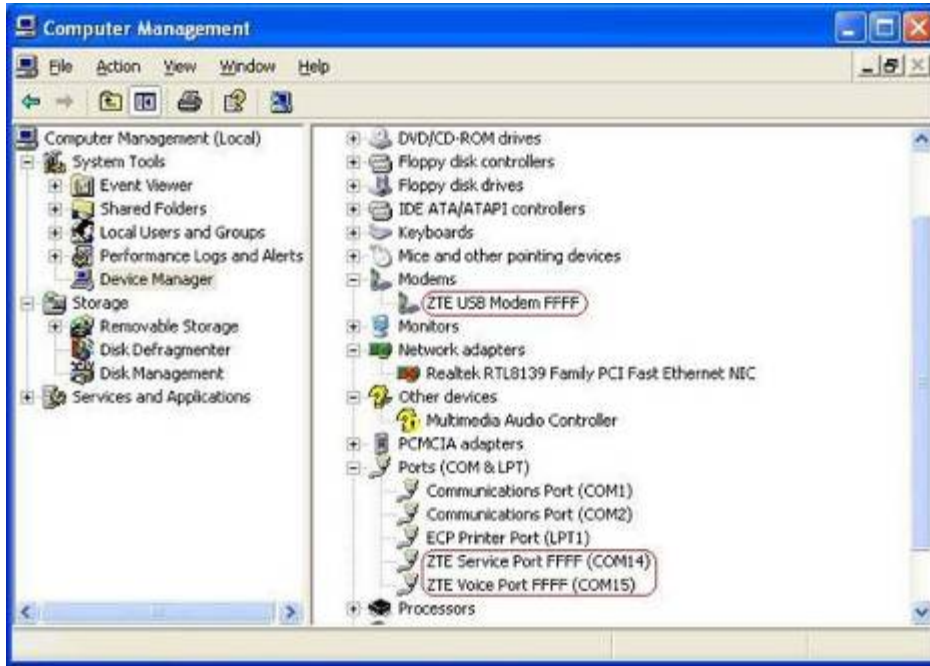
- ✧ Click “Help” button to view the relevant help file; click “Online service” to enter our company’s website.
- ✧ You could view the software version information under “About”.

14. Connect to the Website

Click  button to directly connect the website you set. For details on the website setting, please refer to Chapter 12 “Setting”.

15. Trouble-shooting

After the installation, go to device manager and find “ZTE USB Modem FFFF” under “Modem” and “ZTE Service Port FFFF”, “ZTE Voice Port FFFF” under “Port”. If they are not found, please remove the software and reinstall.



Common Failures Table:

Failures	Causes	Solutions
Error occurs during the program installation.	The setup file may be damaged.	Please download the program on our website WWW.ZTEMT.COM and reinstall it.
Open port failed.	Directly run the software before the Data Terminal is plugged in.	Close the software, plug in the Data Terminal and run it again.
	The port is occupied by other applications, such as “Hyper terminal”, or the software is already run.	Close relevant software and run the software again.
No R-UIM card.	R-UIM card is not inserted.	Insert R-UIM card.
	R-UIM card is not inserted properly. Sometimes the front side and back side are confused.	Please refer to User Guide. Properly insert R-UIM card.
	R-UIM card is damaged. Validate by using a CDMA terminal.	Replace R-UIM card.
No signal indicated.	Antenna is not	Insert the antenna into the Data Terminal.

	connected to the Access Box.	
	Out of the network service area.	Make sure it is in the CDMA network service area.
	The antenna or RF component is damaged.	Replace relevant damaged parts.
Dialing failed.	Wrong setting of parameters. (Phone, User, Password.)	Correct the parameter settings. Consult your service provider for details.
	Not enough money.	Consult your service provider for details.
	Network congestion or failure.	Try again later.
Internet connection failure.	The Data Terminal is being connected. (It usually occurs when the Internet connection is immediately made after the call is dialed.)	Reconnect.
	Poor network signal.	View signal strength indication and check if the antenna is properly inserted.
The installation program can't auto set up. (If the Data Terminal supports auto setup function.)	The program has already been installed in current system.	Firstly remove the original program and insert the terminal again.
	Autorun function in CD-ROM is disabled because of installation of anti-virus software in the system, or Windows Vista system itself disabled Autorun function in CD-ROM in default.	Open "My Computer" to enter CD-ROM disk ordinal, and double-click Setup.exe to install manually.
No CD-ROM disk ordinal in "My Computer".	CD-ROM will automatically disappear once the	This is normal. If you want to display CD-ROM disk ordinal, you could firstly remove the program and then insert the terminal again.

	<p>program is installed successfully.</p>	
	<p>The program is not yet installed, and no other previous version was installed in the system.</p>	<p>Please restart your computer. Please contact your local operator or product technical support center if CD-ROM disk ordinal doesn't appear after your computer is restarted.</p>
<p>The driver might be unable to work and the application is unable to run normally if the terminal is pulled out and plugged in again when the application is being used under Win2000 operating system (SP4).In this case, the device in device manager will be marked with yellow exclamation mark, and the system must be restarted to run normally.</p>	<p>The operating system needs installing Update Roll 1 patch for Win2K SP4.</p>	<p>Please download the patch from the following web site and install it. http://www.microsoft.com/downloads/details.aspx?familyid=B54730CF-8850-4531-B52B-BF28B324C662&displaylang=en</p>

16. FCC Regulations

- This device complies with part 15 of the FCC Rules. Operation is subject to the following two conditions: (1) This device may not cause harmful interference, and (2) this device must accept any interference received, including interference that may cause undesired operation.
- This device has been tested and found to comply with the limits for a Class B digital device, pursuant to Part 15 of the FCC Rules. These limits are designed to provide reasonable protection against harmful interference in a residential installation. This equipment generates, uses and can radiated radio frequency energy and, if not installed and used in accordance with the instructions, may cause harmful interference to radio communications. However, there is no guarantee that interference will not occur in a particular installation. If this equipment does cause harmful interference to radio or television reception, which can be determined by turning the equipment off and on, the user is encouraged to try to correct the interference by one or more of the following measures:

- Reorient or relocate the receiving antenna.
- Increase the separation between the equipment and receiver.
- Connect the equipment into an outlet on a circuit different from that to which the receiver is connected.
- Consult the dealer or an experienced radio/TV technician for help.

Changes or modifications not expressly approved by the party responsible for compliance could void the user's authority to operate the equipment.

▶ RF Exposure Information (SAR)

This device meets the government's requirements for exposure to radio waves.

This phone is designed and manufactured not to exceed the emission limits for exposure to radio frequency (RF) energy set by the Federal Communications Commission of the U.S. Government.

The exposure standard for wireless device employs a unit of measurement known as the Specific Absorption Rate, or SAR. The SAR limit set by the FCC is 1.6W/kg. *Tests for SAR are conducted using standard operating positions accepted by the FCC with the device transmitting at its highest certified power level in all tested frequency bands. Although the SAR is determined at the highest certified power level, the actual SAR level of the phone while operating can be well below the maximum value. This is because the device is designed to operate at multiple power levels so as to use only the power required to reach the network. In general, the closer you are to a wireless base station antenna, the lower the power output.

The highest SAR value for the device as reported to the FCC when tested for body, as described in this user guide, is 0.922 W/kg for CDMA 850 band.

While there may be differences between the SAR levels of various phones and at various positions, they all meet the government requirement.

The FCC has granted an Equipment Authorization for this device with all reported SAR levels evaluated as in compliance with the FCC RF exposure guidelines. SAR information on this device is on file with the FCC and can be found under the Display Grant section of <http://www.fcc.gov/oet/fccid> after searching on FCC ID: Q78-AC8710.

For body operation, this device has been tested and meets the FCC RF exposure guidelines for use the positions the device a minimum of 0.5cm from the body. Use of other enhancements may not ensure compliance with FCC RF exposure guidelines.