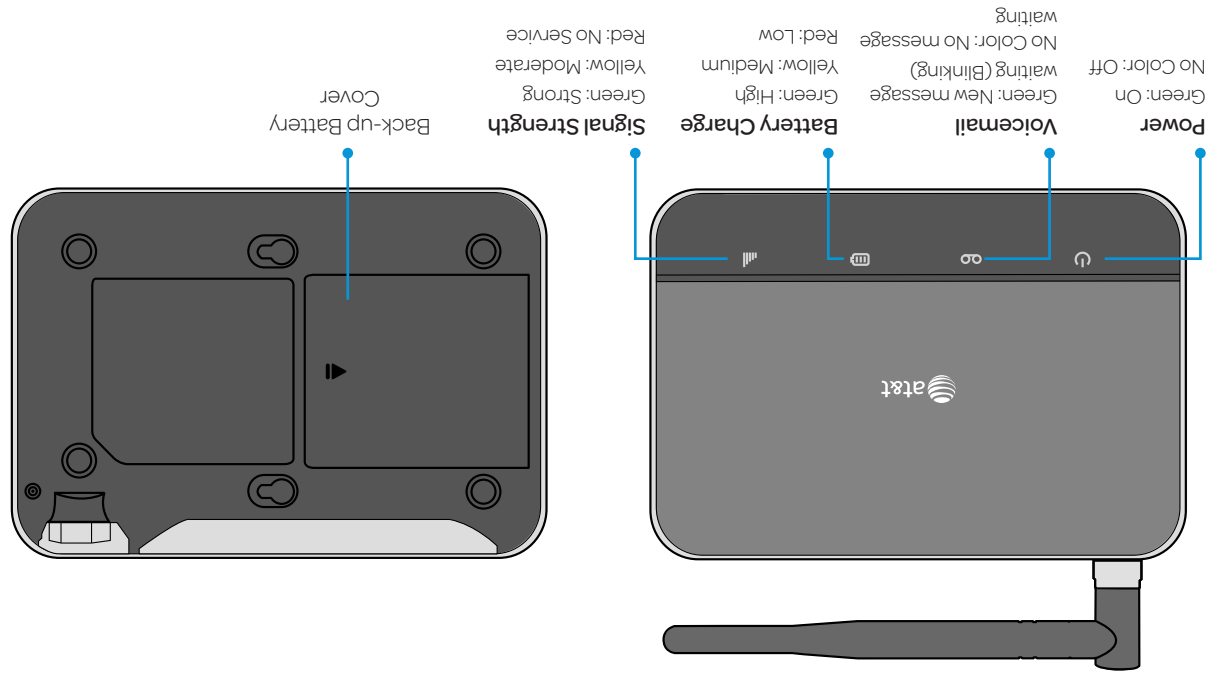
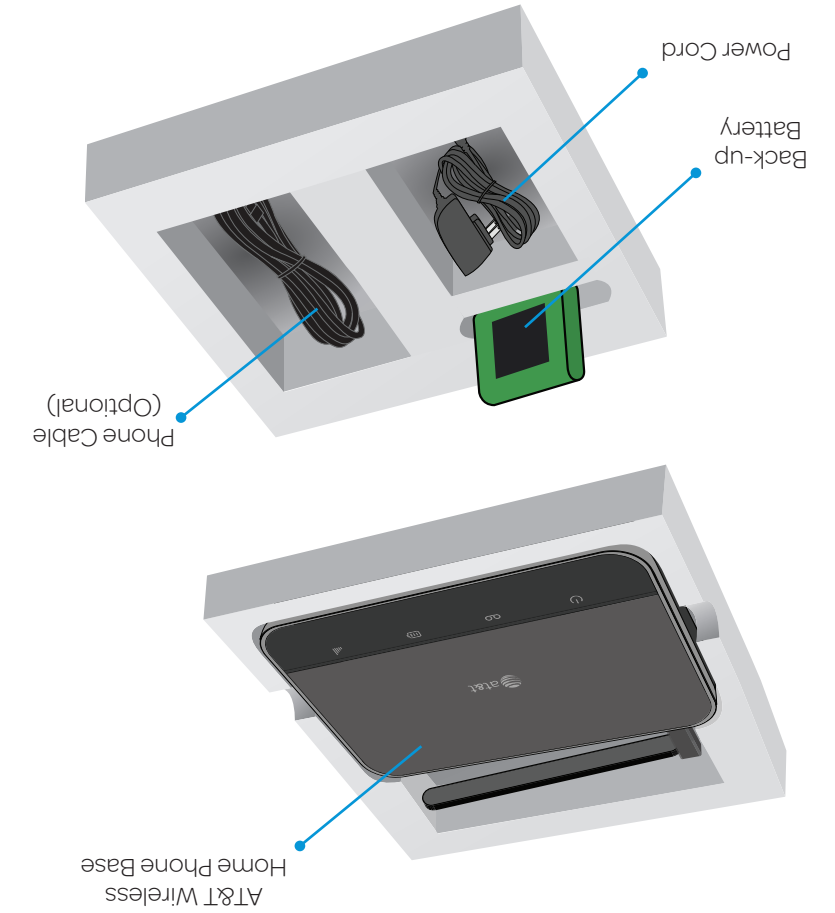


## Getting To Know Your Device



For more detailed information on Light Indicators, please refer to the User Guide.  
\*Reserved for AT&T technical support.

## AT&T Wireless Home Phone Base In The Box



## Useful Tips

- Dial "1" to set up and access your voicemail. Be sure to create a password for security and remote access. Use of answering machine systems is not recommended.
- Transferring a landline phone number can take five (5) days or more. Outgoing calls can be made immediately, while incoming calls will continue through your old service until transfer is complete. Check status at [www.att.com/port](http://www.att.com/port).
- The "Phone 2" port can be used to connect an additional phone. This port uses the same telephone number as the "Phone 1" port.
- 10-digit dialing is always required, including for local phone numbers.

## Find More Information

Refer to your User Guide, visit [att.com/DeviceSupport](http://att.com/DeviceSupport), or call AT&T Support at 1-800-331-0500.

Not compatible with home security systems, wireless messaging and data services, fax service, DVR/Satellite systems, or medical alert systems, credit card machines, IP/PBX Phone systems, dial-up or DSL internet service. The Wireless Home Phone Base is designed to provide coverage that is consistent with other AT&T wireless devices, but AT&T does not represent that the Wireless Home Phone Base will be the equivalent to landline phone service. 911 calls are routed based on the wireless network's automatic location technology, but you may have to provide your home address to emergency responders. AT&T recommends that you always have an alternative means of accessing 911 service from your home during a power or network outage, such as a landline telephone.



Service provided by AT&T Mobility. © 2012 AT&T Intellectual Property. All rights reserved. AT&T, the AT&T logo and all other AT&T marks contained herein are trademarks of AT&T Intellectual Property and/or AT&T affiliated companies. All other marks contained herein are the property of their respective owners.

081704100044

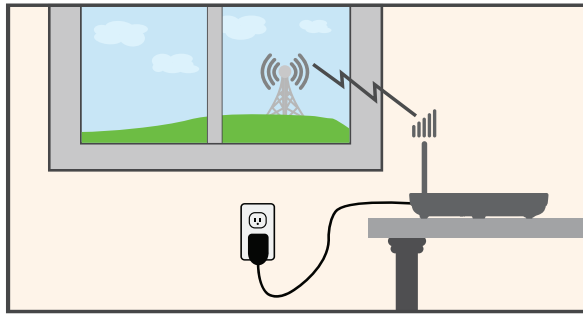


## Before You Begin

Wireless Home Phone Base works exclusively with the AT&T cellular network and DOES NOT use your home's phone wall jacks.

Your device should be located:

- Where you have a strong cellular signal from a cell tower, typically near a window or outside wall.
- Near an electrical wall outlet.

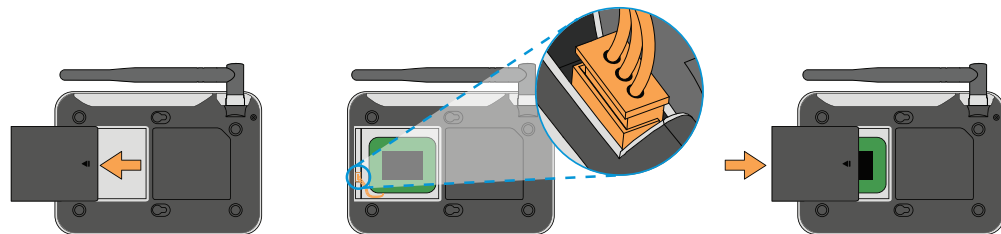


## 1 Install the Back-up Battery

Remove the lid from the battery compartment.

Insert the battery connection cable into the battery port.

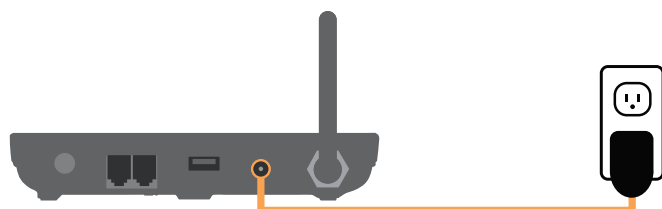
Place the back-up battery in the battery slot and replace the battery cover.



## 2 Connect the Power Cord

Insert the small end of the power cord into the Power Input port on the back of your Wireless Home Phone Base.

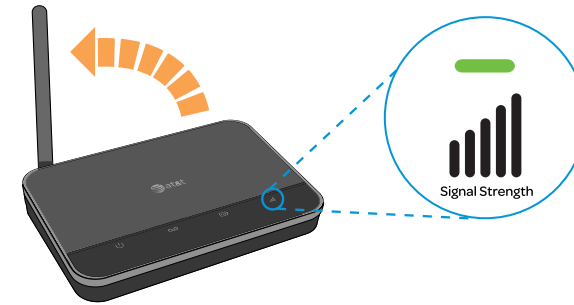
Plug the power cord into an electrical wall outlet that is not controlled by a wall switch.



## 3 Check the Wireless Signal

Raise antenna to an upright position.

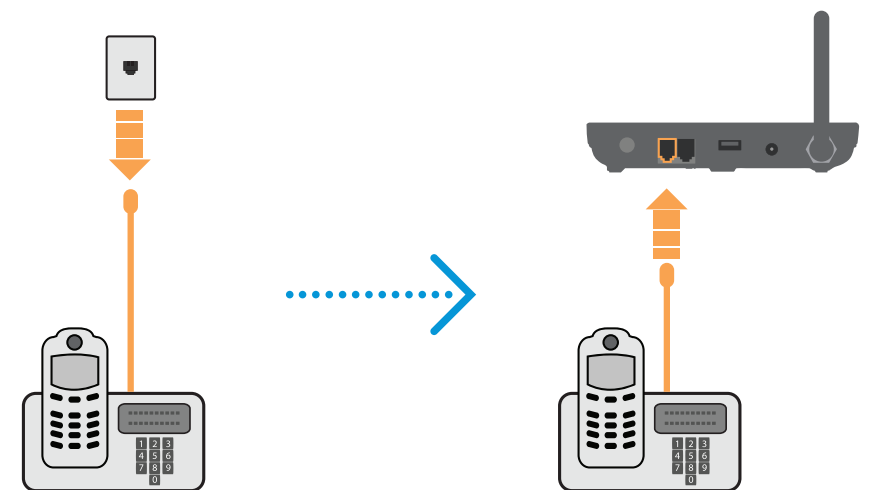
Confirm signal strength light is green for optimal performance. Yellow indicates a moderate signal and may be sufficient.



## 4 Connect the Device to a Phone

1) Unplug your phone from your home's phone wall jack.

2) Plug your phone into the "Phone 1" port on the Wireless Home Phone Base, using your existing phone cable or included phone cable.



**IMPORTANT:** DO NOT plug the Wireless Home Phone Base into your home's phone wall jack.

## 5 Place a Test Call

Place a test call from your connected home phone. Make sure to use 10-digit dialing even for local phone calls.

For best results, place the cordless phone base approximately 12 inches from the Wireless Home Phone Base.



See "Useful Tips" section for setting up voicemail and checking status of transferred phone numbers.