

# **GSM Digital Mobile Phone User Manual**

The manual is applicable for the **F231** mobile phone.

## 文档信息

| 版本  | 修订日期     | 修订人 | 软件版本 | 备注   |
|-----|----------|-----|------|------|
| 1.0 | 2012年11月 | 丁雪璋 |      | 拟制初稿 |
|     |          |     |      |      |

Copyright © 2014 by ZTE Corporation

All rights reserved.

No part of this publication may be quoted, reproduced, translated or used in any form or by any means, electronic or mechanical, including photocopying and microfilm, without the prior written permission of ZTE Corporation.

The Bluetooth® trademark and logos are owned by the Bluetooth SIG, Inc. and any use of such trademarks by ZTE Corporation is under license. Other trademarks and trade names are the property of their respective owners.

ZTE Corporation reserves the right to make modifications on print errors or update specifications in this manual without prior notice.

Version 1.0 in Jan. 2014

# Contents

|   |           |
|---|-----------|
| <b>Let's get started</b> .....            | <b>1</b>  |
| Lost or stolen? .....                     | 1         |
| Using your phone safely .....             | 2         |
| Battery care and safety.....              | 5         |
| Charger care and safety .....             | 7         |
| Getting to know your phone.....           | 9         |
| Inserting and removing a memory card..... | 13        |
| Using the battery.....                    | 15        |
| Power on/off.....                         | 17        |
| <b>Using your phone</b> .....             | <b>18</b> |
| <b>Basic operation</b> .....              | <b>19</b> |
| <b>Common functions</b> .....             | <b>21</b> |
| Making and receiving calls .....          | 21        |
| Writing messages .....                    | 23        |
| Viewing messages.....                     | 23        |
| Adding a new contact .....                | 24        |

|   |           |
|---|-----------|
| Using your phone as memory.....               | 24        |
| Using your phone as modem.....                | 24        |
| <b>Main function list.....</b>                | <b>26</b> |
| <b>Input what you want, how you want.....</b> | <b>34</b> |
| <b>Appendix .....</b>                         | <b>36</b> |
| Care and maintenance .....                    | 36        |
| FCC regulations .....                         | 37        |
| Declaration of RoHS compliance .....          | 41        |
| Disposal of your old phone .....              | 42        |
| Problems and their solutions .....            | 43        |



## Let's get started

Thanks for choosing the F231. It's a GSM Digital Mobile Phone, which we'll simply call 'phone' from now on.

If you'd like your phone to live a long and fruitful life, please read this guide carefully and keep it for future reference. You never know when you might need it.

And don't worry if the pictures we use to demonstrate your phone's functions look a little different from what you see on its screen. It's the functions they show that matter.

### Lost or stolen?

If your phone goes missing, please tell your service provider as soon as you know. That way other people can be barred from using it.

Obviously, it's best to keep your phone with you at all times, and we'd strongly advise you to set a phone lock code, and change it from time to time.

## Using your phone safely



### **on the road**

- Using a phone while driving is illegal in many countries. Please follow local laws and drive safely at all times.



### **near sensitive electronics**

- Don't use your phone near sensitive electronic equipment – particularly medical devices such as pacemakers – as it could cause them to malfunction. It can also interfere with the operation of fire detectors and other automatic-control equipment.
- For more information about how your phone affects pacemakers or other electronic equipment, please contact the manufacturer or your local distributor.
- Your phone may cause interference when used near TVs, radios or automated office equipment.



### **while flying**

- Your phone can cause interference with aircraft equipment. So it's



essential you follow airline regulations. And if airline personnel ask you to switch off your phone, or disable its wireless functions, please do as they say.



### **in hospital**

- Your phone may interfere with the normal operation of medical equipment. Follow all hospital regulations and turn it off when you're asked to by posted warnings or medical staff.



### **at a petrol station**

- Don't use your phone at petrol stations. In fact, it's always best to switch off whenever you're near fuels, chemicals or explosives.



### **around water**

- Keep your phone away from water (or any other liquid). It's not a waterproof model.



### **making repairs**

- Never take your phone apart. Please leave that to the professionals. Unauthorised repairs could break the terms of your warranty.



### **broken antenna**

- Don't use your phone if the antenna is damaged, as it could cause injury.



### **around children**

- Keep your mobile out of children's reach. It should never be used as a toy and it might not be good for their health.



### **original accessories**

- Only use the original accessories supplied with your phone or those approved by the manufacturer. Using unapproved accessories may affect performance, make the warranty void, break national regulations on the use of mobile phones, or even cause injury.



### **near explosives**

- Turn off your phone in or near areas where explosive materials are used. Always obey local laws and turn off your phone when requested.

## emergency calls

- To make an emergency call your phone must be turned on and in an area where there's network coverage. Dial the national emergency number and press 'send'. Explain exactly where you are and don't hang up until help has arrived.

## working temperature

- The working temperature for the phone is between 0°C and 40°C. Please don't use the phone outside the range. Using the phone under too high or too low temperature might cause problems.



At very high volume, prolonged listening to a mobile phone can damage your hearing.

## Battery care and safety

- Keep the battery in a cool, ventilated place and out of direct sunlight.

- Although the battery is rechargeable, it'll eventually start to lose its ability to recharge. If you find that the battery won't recharge, it's time to replace it.
- Please don't throw old batteries into your household rubbish. You'll find there are special bins for batteries at refuse collection points. And some high street electrical stores provide a battery recycling service too.
- Never throw the battery into a fire – it's highly inflammable and could explode, hurting you or somebody else.
- When you put the battery into your phone, there's no need to use force. Exerting too much pressure could make it leak, overheat, explode or burst into flame.
- Never take the battery apart. This may result in leakage, overheating, explosion or fire.
- If the battery becomes hot, changes colour or shape at any time (when in use, charging or even while in storage) please stop using it immediately and replace.
- Keep the battery dry. Damp or wet conditions can cause it to overheat or corrode.
- Don't leave the battery in direct sunlight or anywhere really hot, like in a car on a summer's day. That could make it leak or overheat, while

lowering its performance and shortening its life.

- Don't charge the battery continuously for 24 hours. Overcharging is not good for it.



**Note:**

*Please avoid contact with the materials inside a damaged or leaking battery. If they get on your skin, wash with lots of water and seek medical assistance if required.*

---

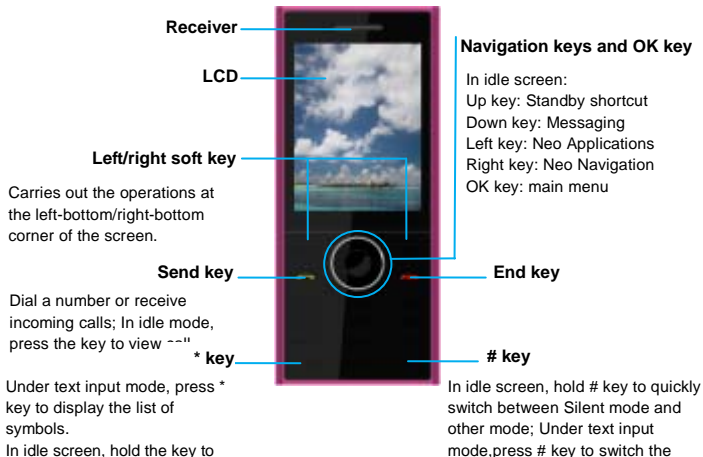
## **Charger care and safety**

- Only plug into voltages between 110VAC and 220VAC. Using a voltage outside that range can damage the phone/charger – and cause the battery to leak or catch fire.
- Never short-circuit the charger – this may cause electrocution, overheating or damage.
- Don't charge the phone in direct sunlight or in an area where it's damp, dusty, or on a vibrating surface. And charging your phone near – or on – a TV or radio could interfere with transmission.
- Don't use the charger if the power cable is damaged. It may cause a

fire or give someone an electric shock.

- Keep water well away from the charger. If the charger does get splashed by water, or any other kind of liquid, immediately unplug it to avoid overheating, fire or electrocution.
- Don't take the charger apart. It could cause injury, give you an electric shock or catch fire.
- Never touch any charger, electric cable or socket with wet hands.
- Don't place heavy objects on the electric cable.
- If the cable is damaged, don't try to mend it yourself – it could cause a fire or electrocute you.
- Always unplug the charger before you clean it.
- When unplugging the charger, hold the plug itself, rather than pulling on the cable. A damaged cable can cause electrocution or fire.

## Getting to know your phone





**Note:**

*In this user guide, 'press' means pressing the key and then releasing.*

*'Hold' means pressing and holding the key for two seconds or*



*more.*

---

## Onscreen icons

| Icons   | Descriptions            | Icons   | Descriptions             |
|---|-------------------------|---|--------------------------|
|  | Network signal strength |  | Battery capacity         |
|  | Audio player is on      |  | A clock alarm is active. |
|  | You have missed calls   |  | Insert the headset       |
|  | Meeting mode            |  | Flight mode              |
|  | Outdoor mode            |  | Silent mode              |
|  | You have unread message |   |                          |

## Inserting and removing the SIM

Your phone needs a valid SIM card to work (...To keep it simple, we'll just call it 'SIM' from now on.) Your network connection data and your SIM address book are saved on the SIM. So, to avoid damaging your SIM or losing data, try not to touch the metal surface when you're handling it – and keep well away from any magnetic or electric source.

### Here's what you do...

1. Switch off your phone and disconnect any external power.
2. Remove the back cover.
3. Hold your SIM on the cut corner, and slide it – face down – into the card holder.
4. Replace the back cover.



## Inserting and removing a memory card

---



**Note:**

*Removing or inserting a memory card when your phone is turned on could not only damage it and your phone, but also destroy any data saved on the card.*

---

1. Remove the battery cover of the phone.
2. Insert the memory card into the slot.

Before you take out the card, please remove the battery cover of the phone, slightly press the memory card to unlock it and then take out the card.



## Using the battery

### Inserting the battery

1. Open the battery cover on the back of your phone.
2. Align the battery's contact points with those of the phone and gently press the battery down into place.
3. Replace the battery cover clicking it back into position.



### Removing the battery

1. Switch off your phone.
2. Open the battery cover.
3. Lift the battery up and out of your phone.



## Charging the battery

The rechargeable Li-ion battery that comes with your phone is ready to use, but is not charged. That's easy to do. We'll show you how below.

The first three times you use the battery, make sure it's completely drained before recharging. And then recharge it fully. That will help to ensure its optimum performance and a long life.

1. Connect the charger to your phone, and plug it into an 110V/220V socket.
2. The battery indicator in the corner of the screen will scroll right and left to show you it's charging. And please don't worry if the phone and charger become warm while charging. That's completely normal.
3. When fully charged, the battery indicator will stop scrolling.
4. Disconnect the charger from your mobile, and unplug.



## Power on/off

### Power on

Long press the **Power key** until the power-on animation appears.

When you turn your phone on, it'll automatically show the following information on screen:

- **Please input the security code:** If you've set phone lock.
- **Searching:** The phone will search for the available network.

### Power off

In idle mode, long press the **Power key** and then select '**Power off**'.

# Using your phone

Press the OK key to enter the main menu...

## **Calls**

- Miss calls
- Outgoing calls
- Incoming calls
- All calls
- Delete all
- Call duration

## **Phonebook**

- Preferred storage
- Speed dial
- My number
- Extra number
- Memory status
- Copy contacts
- Move contacts
- Delete all contacts

## **Multimedia**

- Video player
- Audio player
- Camera
- Camcorder
- FM radio
- Recorder

## **Messaging**

- Write message
- Inbox
- Outbox
- Drafts
- Sent messages
- Message settings

## **En tus manos**

## **Browser**

## **Settings**

- Profiles
- Phone settings
- Security settings
- Connectivity
- Restore settings

## **Camcorder**

## **SIM tool kit**

## **Paginas**

## **Amarillas**

## **File manager**

## **Tools**

- Calendar
- Tasks
- Alarm
- World clock
- Calculator



Flash

## Basic operation

### Menu Navigation

In idle screen, press the **Left soft key** to enter the main menu. Once at the main menu, use the **Navigation keys** and the **Left soft key** to enter the submenu, press **Back** to return to the previous menu, and press the **Power** key to return to the home screen.

## Keypad Lock

You can use the keypad lock to prevent the keys from being accidentally pressed.

You can press the **Power key** to lock the screen quickly. To unlock the screen, press any key and then press the Left soft key and # key.

In 'Settings' → 'Phone settings' → 'Auto lock', set the auto keypad lock time. If the phone is not operated within this time, the keypad will be locked.

# Common functions

## Making and receiving calls

### Making a call

- **Directly make a call:** In idle mode, press the numeric keys to input the telephone number and press the Send key to make a call.
- **Making a call from Phonebook:** In idle mode, press the Right Soft key to enter **Phonebook**, select the desired contact and press the Send key to make a call.
- **Making a call from Call History:** In idle mode, press the Send key, select the desired call log and press the Send key to make a call.
- **Make an international call:** Press the '\*' key continuously until "+" appears on the screen, and then dial the country code or region code, city code and phone number.

## Receiving a call

Someone's calling? Press the Send key to answer.

## Adjusting the volume

During a call, you can raise or lower the volume by using the side keys. And in idle mode, you can use the side keys to adjust the keypad volume.

## Hands-free

During a call, press '**LoudSp.**' to enter the hands-free status, and press '**Nomal**' to restore the normal conversation.

## Call Options

During a call, if you need input the symbols such as password during a call, please press '**Option**' and select '**Dialer**', and then input the symbols.

You could also press '**Option**' and then select '**Contacts**' or '**Messages**' to view the relevant information.

## Writing messages

1. Enter the main menu, and then select '**Messaging**' → '**New message**'.
2. Enter recipient or press '**Add**' to add the recipient from Contacts.
3. Press the Down key to enter the text field and write your message. The default message type is SMS.
4. If you want to change to MMS, you can press '**Option**' and choose '**Message type**' → '**MMS**'; or you can press '**Option**' and choose '**Insert**' to directly insert multimedia contents to the message and it will be switched to MMS automatically.
5. When you finish writing, press '**Send**' to send the message out. If you want to save the message as a draft, select '**Option**' → '**Save to Draft**'.

## Viewing messages

Your phone is very versatile. According to what you've selected, it can tell you that you've received a new message in three different ways: a ringtone, a prompt, or a new message icon.

1. Press '**View**' to open the Inbox. You can also go to Inbox through the main menu to read the message.
2. Press the OK key to reply or go to '**Option**' to select '**Forward**', '**Delete**', or whatever you want to do...

## Adding a new contact

1. Enter the main menu, then select '**Phonebook**'.
2. Select '**Add**'.
3. Edit the information and select '**Save**'.

## Using your phone as memory

Make sure the memory card is installed and your phone is switched off, Then connect the phone to your PC with the USB data cable, and switch your phone back on. Then select 'U disk' on the phone, and you can use your phone as extra memory.

## Using your phone as modem

You could use your mobile phone as Modem after connecting it and PC with the data cable. For details, please refer to <User Guide to Dial-up

Internet Software> in CD.

## Main function list

In idle mode, press the **OK key** to enter the main menu. Those marked with '\*' need support from network operators.

| Functions          | Descriptions  | Operation method   |
|--------------------|---|--|
| View call history  | View the recent incoming, missed and outgoing calls.  | Call center → Miss calls / Outgoing calls / Incoming calls / All calls |
| Delete a call log  | Delete a call log.  | Calls → Select one call log → Option → Delete                          |
| Delete call logs   | Delete Miss calls / Outgoing calls / Incoming calls / All calls.  | Calls → Delete all   |
| View call duration | View the duration of last call, all outgoing calls and all incoming calls.  | Calls → Call duration  |
| View contacts      | View all contacts.<br>Press left/right key to switch among the contacts in each group.<br>Input the first letter of the contact's name to quickly | Phonebook → Quick view   |



| Functions       | Descriptions  | Operation method                            |
|-----------------|---|---|
|                 | search the contact.   |   |
| Search number   | Input a phone number to inquire the contact.  | Phonebook  Search number                    |
| Add contacts    | Save the telephone number and name.   | Phonebook  Add                              |
| Edit contact    | Edit the information of existing contact.   | Phonebook  Select one contact  Option  Edit |
| Caller groups   | Divide the contacts into different groups.  | Phonebook  Group                            |
| Delete contacts | You can select to batch delete some contacts or select to delete all contacts.  | Phonebook  Massive delete                   |
| Speed dial      | Edit 8 phone numbers and assign these numbers to the keys from 2 to 9.<br>In the dialing interface, hold the numeric key to quickly dial the corresponding phone number of the numeric key. | Phonebook  Speed dial                       |
| Import card     | You can import the  | Phonebook  Import card                      |

| Functions       | Descriptions   | Operation method                                |
|-----------------|--|---|
|                 | phonebook file from the memory card or from the phone.             |   |
| Memory status   | Check the memory status of the contacts.                           | Phonebook→Memory status                         |
| Video player    | Play the video file.   | Multimedia→Video player                         |
| Audio player    | Play the audio file.   | Multimedia→Audio player                         |
| Camera          | Capture digital photos.  | Camera or<br>Multimedia→Camera                  |
| Video recorder  | Record video files.  | Multimedia→Camcorder                            |
| Sound recorder  | Record audio files.  | Multimedia→Recorder                             |
| Send message    | Send text messages/<br>multimedia messages to other mobile phones. | Messaging→Write message                         |
| View message    | Read the messages (received, unsent, sent, drafts, saved).         | Messaging→Inbox/Drafts/Outbox /Sent/User folder |
| Templates       | Select the template to send text message or multimedia message.    | Messaging→Settings→Template                     |
| Delivery report | This option is useful only for SMS function. After this            | Messaging→Settings→SMS settings→Delivery report |

| Functions        | Descriptions  | Operation method   |
|------------------|---|--|
|                  | function is activated and the message is sent, your phone would receive Delivery Report from network side, which prompts you that your message has been delivered or undelivered. |  |
| Memory status    | Check the memory status of the messages.  | Messaging → Memory status  |
| Voice mail*      | A caller can leave a message and you can listen to it in your voicemail.  | Messaging → Voice mail<br>Enter Dialer, hold '1' key to call the voicemail number. |
| User profiles    | Perform personalized settings on ringtone, volume, ringer type, etc. according to different events and occasions.   | Settings → Profiles → Select profile (Standard/ Meeting etc.) → Startup            |
| Wallpaper        | Set the standby image on the screen.  | Settings → Phone settings → Display → Wallpaper                                    |
| Standby shortcut | Set the shortcut functions of four navigation keys in idle  | Settings → Phone settings → Display  |

| Functions             | Descriptions   | Operation method  |
|-----------------------|--|---|
| Desktop shortcut      | mode.<br>Set the shortcut icon in the lower part of the screen in idle mode. | ☰☰ Standby shortcut<br>Settings☰☰ Phone settings☰☰ Display☰☰ Desktop shortcut |
| LCD backlight         | Set the backlight time and brightness for LCD.                               | Settings☰☰ Phone settings☰☰ LCD backlight                                     |
| Keypad backlight      | Set the time to turn on keypad backlight .                                   | Settings☰☰ Phone settings☰☰ Keypad backlight                                  |
| Power-saving mode     | Turn on/off power-saving mode.   | Settings☰☰ Phone settings☰☰ Power-saving mode                                 |
| Date and time format  | Set the date and time format.  | Settings☰☰ Phone settings☰☰ Date and time format                              |
| Schedule power on/off | Perform the action of power on/off according to the setting time.            | Settings☰☰ Phone settings☰☰ Schedule power-on/off                             |
| Auto keypad lock      | The keypad lock would prevent the inadvertent operation caused by key press. | Settings☰☰ Phone settings☰☰ Auto lock   |
| Language              | Select the language for the  | Settings☰☰ Phone settings☰☰   |

| Functions           | Descriptions   | Operation method                                   |
|---------------------|--|--|
| Call forwarding*    | Forward the incoming call to designated number on a specific occasion.                             | Language<br>Settings→Call settings→Call forwarding |
| Call waiting*       | You will be prompted by the network upon an incoming call if this function is activated.           | Settings→Call settings→Call waiting                |
| Any key to answer   | If this function is set 'On', press any key except End key & Right Soft Key to answer the call.    | Settings→Call settings→Any key to answer           |
| Headset auto answer | If this function is set 'On', you can automatically answer the phone after inserting the earpiece. | Settings→Call settings→Headset auto answer         |
| Call barring*       | You could edit the Whitelist and Blacklist and set the incoming call restriction.                  | Settings→Call settings→Incoming call firewall      |
| Auto redial         | When selecting 'On' for Auto   | Settings→Call                                      |

| Functions                | Descriptions  | Operation method                     |
|--------------------------|---|--------------------------------------|
|                          | redial, your phone will automatically redial after a while if the call is not answered.   | settings➤Auto redial                 |
| Voice Privacy            | Set the type of voice privacy. If you select "On", conversation will be encrypted. This function requires network support, so please consult your network operator. | Settings➤Call settings➤Voice Privacy |
| Network settings         | Custom Proxy.   | Settings➤Network settings            |
| Phone lock               | Activate phone lock to prevent the phone from abuse.<br>The default security code is 1234.  | Settings➤Security➤Phone lock         |
| Restore factory settings | Restore to original factory settings.   | Settings➤Security➤Reset              |
| Alarm                    | Set multiple alarms, and support power-off alarm.   | Tools➤Alarm                          |
| Calendar                 | Check the calendar and  | Calendar or Tools➤Calendar           |

---

| <b>Functions</b> | <b>Descriptions</b>  | <b>Operation method</b> |
|------------------|--|-------------------------|
| Calculator       | schedule.<br>Simple calculation, such as add, subtract, multiply, divide, etc. | Tools⇨Calculator        |
| World clock      | Check the current time in different cities around the world.                   | Tools⇨World clock       |
| Flash            | You can on/off flash.  | Tools⇨Flash             |
| File manager     | View the files saved in phone and memory card.                                 | File manager            |

## Input what you want, how you want...

The phone supports ABC/ abc/eZiEN, ES/es/eZiES, 123 and symbol input method.

- **Change input mode:** Press **# key** to change the input mode.
- **Input Letters:** In **ABC/abc** mode, press the corresponding letter key till the letter appears.
- **Input Words:** In **eZi EN**, **eZi en**, **eZi Abc** mode, key-in any letter with a single key press. Press each key only once for every letter. The word changes after each key stroke. When you have finished writing the word and it is correct, confirm it by pressing the **OK key**. If the word displayed on the screen is not what you want, press **left/right key** to view other matching words, then confirm it by pressing the **OK key**. Predictive text input is based on a built-in dictionary.
- **Input Digits:** In **123** mode, press digit key once to key-in a digit. In **ABC/abc** mode, long press the number key.
- **Input Symbol:** Press **\* key** to enter a symbol. In **ABC/abc** mode, press **1 key** till the required symbol (common symbols) appears.
- **Input Space:** Press **0 key** to input space. It does not work in **123** mode.



- **Delete Character:** Press **Right soft key** to clear a character.
- **Delete all Characters:** Press and hold **Right soft key** to delete all characters.

# Appendix

## Care and maintenance

Your phone is a delicate device. The following advice will help you to keep it looking good and performing well...

- Use a soft dry cloth to clean your phone, battery and charger. Don't use liquids such as alcohol, dilution agents or benzene.
- From time-to-time, clean the socket where the charger cable connects to the phone. Dust tends to gather there. This will ensure a really good connection.
- Don't use needles, pen points or other sharp objects on the keypad or screen.
- Don't use your phone with wet hands – it could injure you and damage the phone.
- Don't use your phone in dusty or dirty environment.
- Keep your phone away from extremes of heat – like radiators or ovens. It may explode if it gets too hot.
- If your phone gets wet and the colour of the label on it changes, the warranty will be void, even if the warranty period hasn't expired.

- If there's anything wrong with the phone, battery, charger, or any accessory, please send them to your nearest service centre for inspection.

## FCC regulations

- This mobile phone complies with part 15 of the FCC Rules. Operation is subject to the following two conditions: (1) This device may not cause harmful interference, and (2) this device must accept any interference received, including interference that may cause undesired operation.
- This mobile phone has been tested and found to comply with the limits for a Class B digital device, pursuant to Part 15 of the FCC Rules. These limits are designed to provide reasonable protection against harmful interference in a residential installation. This equipment generates, uses and can radiated radio frequency energy and, if not installed and used in accordance with the instructions, may cause harmful interference to radio communications. However, there is no guarantee that interference will not occur in a particular installation. If this equipment does cause harmful interference to radio or television reception, which can be determined by turning the equipment off and on, the user is encouraged to try to correct the interference by one or more of the following measures:
  - Reorient or relocate the receiving antenna.
  - Increase the separation between the equipment and receiver.
  - Connect the equipment into an outlet on a circuit different from that to which

the receiver is connected.

-Consult the dealer or an experienced radio/TV technician for help.

Changes or modifications not expressly approved by the party responsible for compliance could void the user's authority to operate the equipment.

- The antenna(s) used for this transmitter must not be co-located or operating in conjunction with any other antenna or transmitter.

### ▶ RF exposure information (SAR)

This mobile phone meets the government's requirements for exposure to radio waves.

This phone is designed and manufactured not to exceed the emission limits for exposure to radio frequency (RF) energy set by the Federal Communications Commission of the U.S. Government.

The exposure standard for wireless mobile phones employs a unit of measurement known as the Specific Absorption Rate, or SAR. The SAR limit set by the FCC is 1.6W/kg. Tests for SAR are conducted using standard operating positions accepted by the FCC with the phone transmitting at its highest certified power level in all tested frequency bands. Although the SAR is determined at the highest certified power level, the actual SAR level of the phone while operating can be well below the maximum value. This is because the phone is designed to operate at multiple power levels so as to use only the power required to reach the network. In general, the closer you are to a wireless base station antenna, the lower the power output.

While there may be differences between the SAR levels of various phones and at various positions, they all meet the government requirement.

Device types ZTE F231 (FCC ID: SRQ-F231) has also been tested against this SAR limit. The highest SAR value reported under this standard during product certification for use when properly worn on the body is 0.667 W/kg and for head is 0.273 W/kg. Simultaneous RF exposure is 0.749W/Kg.

. This device was tested for typical body - worn operations with the back of the handset kept 10mm from the body.

To maintain compliance with FCC RF exposure requirements, use accessories that maintain a 10mm separation distance between the user's body and the back of the handset. The use of belt clips, holsters and similar accessories should not contain metallic components in its assembly. The use of accessories that do not satisfy these requirements may not comply with FCC RF exposure requirements, and should be avoided.

## Declaration of RoHS compliance

We're determined to reduce the impact we have on the environment and take responsibility for the earth we live on. So this document allows us to formally declare that the S133, manufactured by ZTE CORPORATION, fully complies with the European Parliament's RoHS (Restriction of Hazardous Substances) Directive 2002/95/EC, with respect to all the following substances:

- (1) Lead (Pb)
- (2) Mercury (Hg)
- (3) Cadmium (Cd)
- (4) Hexavalent Chromium (Cr (VI))
- (5) Polybrominated biphenyl (PBB)
- (6) Polybrominated diphenyl ether (PBDE)

Our compliance is witnessed by written declaration from our suppliers. This confirms that any potential trace contamination levels of the substances listed above are below the maximum level set by EU 2002/95/EC, or are exempt due to their application.

The S133 manufactured by ZTE CORPORATION, meets all the requirements of EU 2002/95/EC.

## Disposal of your old phone



1. When the wheeie bin symbol is attached to a product, it means the product is covered by the European Directive 2002/96/CE.
2. All electrical and electronic products should be disposed of separately from normal household waste via designated collection points provided by government or local authorities.
3. The correct disposal of electrical and electronic products will help protect the environment and human health.



## Problems and their solutions

| Symptoms                     | Possible Causes                   | Solutions                                   |
|------------------------------|-----------------------------------|---|
| Phone won't turn on          | The battery is flat               | Charge the battery                          |
|                              | Poor contact                      | Reinstall the battery                       |
| Phone turns itself off       | Battery very low                  | Charge the battery                          |
| Poor standby time            | Decreasing of battery performance | Replace the battery                         |
|                              | Weak network signal               | Turn off the phone                          |
| Can't connect to the network | Weak network signal               | Move to where the signal is stronger        |
|                              | Out of the service area           | Make sure you're in a network service area. |
| Calls keep cutting off       | Weak network signal               | Move to where the signal is stronger        |

| <b>Symptoms</b>                                  | <b>Possible Causes</b>                    | <b>Solutions</b>  |
|--|---|---|
| Phone doesn't ring when I receive incoming calls | Phone is set to 'Mute' or minimum volume. | Enter Settings > Profiles to select a Non-silent mode, or increase the ring volume. |