

ZTE MC315 Wireless Network Card User Guide

(Version: V4.1-TY)

Contents

| | |
|--------------------------------------|----|
| 1. Introduction..... | 3 |
| 2. Specifications..... | 3 |
| 3. Care for your card..... | 3 |
| 4. Features..... | 4 |
| Insert R-UIM card to MC315..... | 4 |
| 5. Setup and Uninstall..... | 4 |
| 5.1 System Requirements..... | 4 |
| 5.2 Setup for Windows 2000..... | 5 |
| 5.2.1 Setup..... | 5 |
| 5.2.2 Uninstall..... | 8 |
| 5.3 Setup for Windows XP..... | 9 |
| 5.3.1 Setup..... | 9 |
| 5.3.2 Uninstall..... | 13 |
| 6. The Main Window and Icons..... | 14 |
| 7. Connect/Disconnect..... | 15 |
| 8. Connection Record..... | 16 |
| 9. Voice call..... | 17 |
| 10. Call History..... | 18 |
| 11. Send Short Messages..... | 18 |
| 12. Read Short Messages..... | 19 |
| 13. Phone Book..... | 20 |
| 14. Settings..... | 21 |
| 15. Trouble Shooting..... | 21 |
| 16. FCC RF EXPOSURE INFORMATION..... | 23 |

1. Introduction

ZTE MC315 PCMCIA wireless network card fits into a standard Type II PC Card slot (available on most notebook PCs) and can function as a wireless network card, a modem, and a mobile phone. This card allows you to connect to the Internet, send and receive SMS messages, and make phone calls, without the need of a network cable or phone line.

With the design of the UIM card separate from the body, MC315 PCMCIA wireless network card can make the operation more flexible.

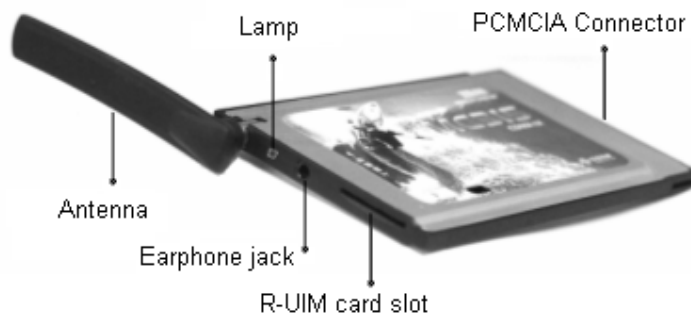
2. Specifications

| | |
|---------------------------|-------------------------------|
| Transmit Frequency | 824.04~848.97MHz |
| Receive Frequency | 869.04~893.37MHz |
| Freq. Stability | FA±300Hz |
| Dimension | 86*54*5 mm |
| Weight | 33g |
| Data Transmission | MAX 153.6 kbps |
| Voltage | 3.3V from PCMCIA Slot |
| Current | Dormancy: 90mA Maximum: 850mA |
| Transmitter Power | 200mW |

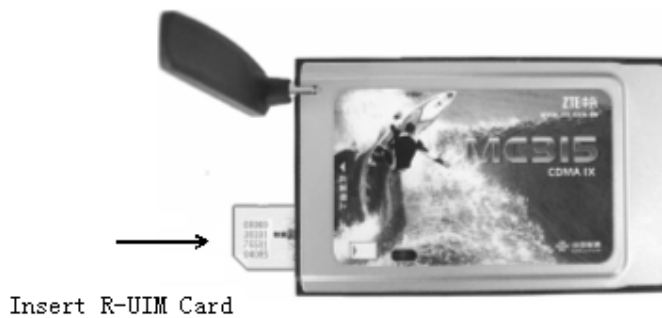
3. Care for your card

- Protect the card from liquids, dust, and excessive heat.
- Optimal signal strength is usually obtained when the antenna is perpendicular to the modem. The antenna should bend easily. Do not forcefully bend the antenna or plug the antenna in and out MC315 card frequently.
- The MC315 card should fit easily into your PC slot. Forcing the card into a slot may damage connector pins.

4. Features



Insert R-UIM card to MC315



When MC315 card start up, the lamp is in YELLOW. After a few seconds, the PCMCIA card will ready to work, the lamp is in GREEN.

5. Setup and Uninstall

5.1 System Requirements

The MC315 wireless network card is supported on:

- Windows 98
- Windows 2000
- Windows XP

To install the MC315, you will require these system resources at the minimum:

| | |
|------------|---------------------------------|
| CPU | Pentium-II/233MHz |
| Card Slots | 1 Type II PCMCIA (PC Card) Slot |
| Disk Drive | CD-ROM (for installation only) |
| Memory | 64 MB |

| | |
|------------|-------|
| Disk Space | 30 MB |
|------------|-------|

5.2 Setup for Windows 2000

5.2.1 Setup

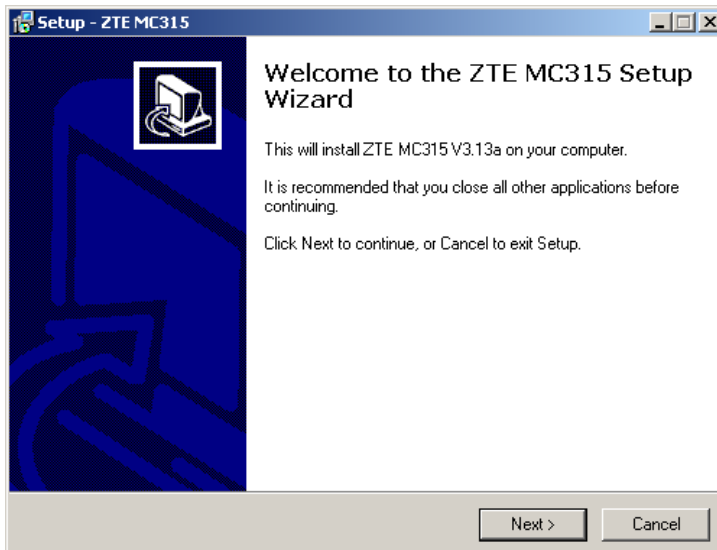
Note:

Don't insert the ZTE MC315 Wireless network Card before setup.

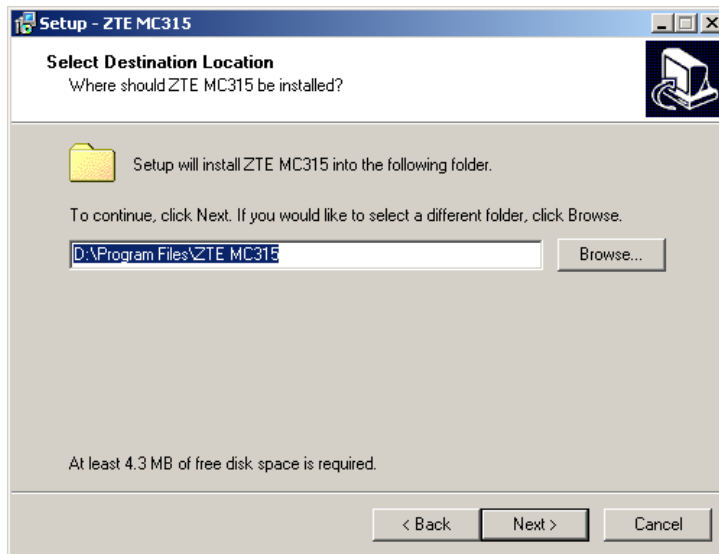
1. Please find "autosetup.exe" first in ZTE MC315 CD, and double click the icon of autosetup.exe, then choose "English" when the picture displayed in the screen.



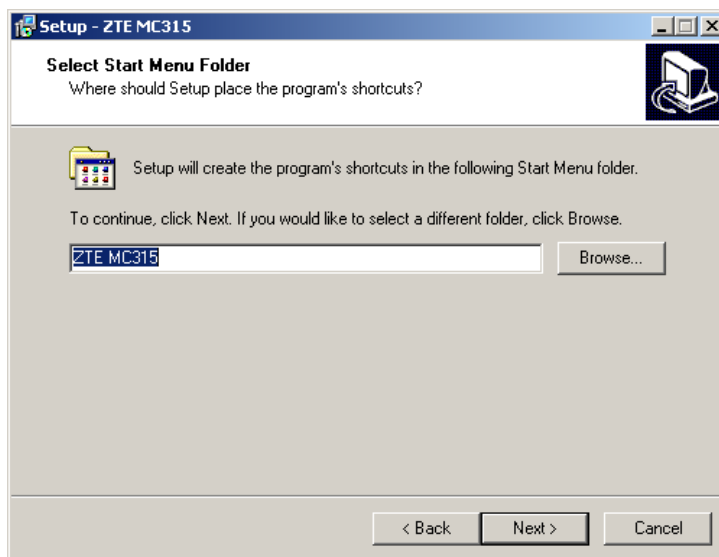
2. When you see this window, please click "next".



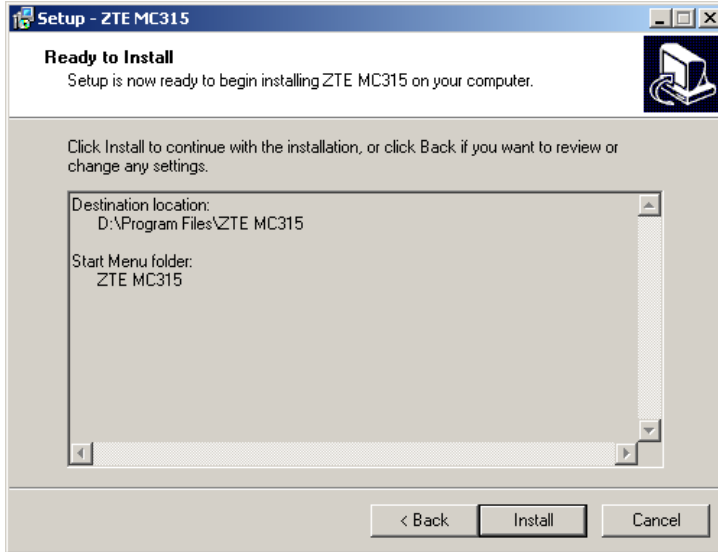
3. Select the location where the program is to be installed, then click “Next”.



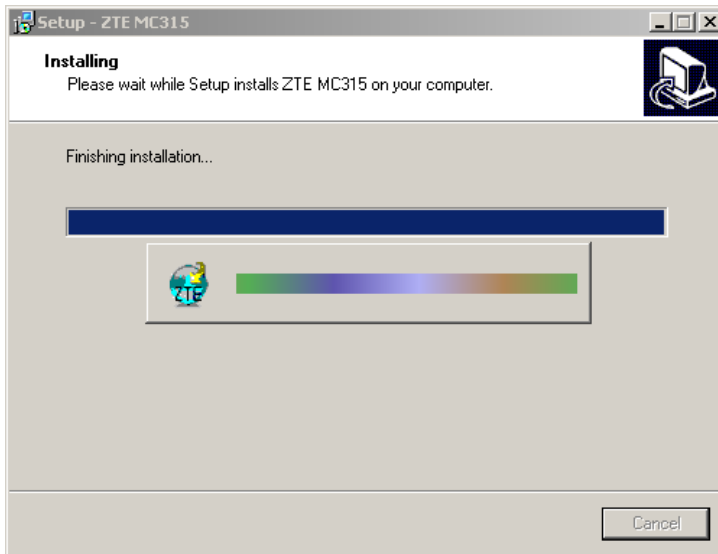
4. When you see this window, please click “next”.



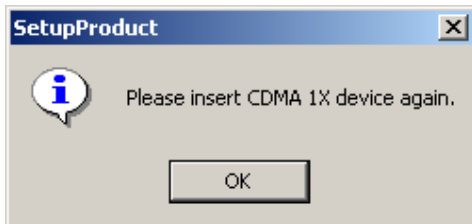
5. When you see this window, please click “install”.



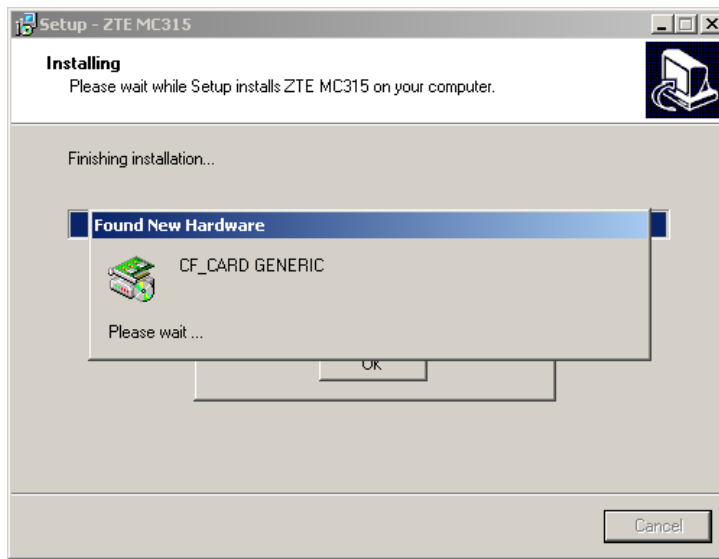
6. Please wait.



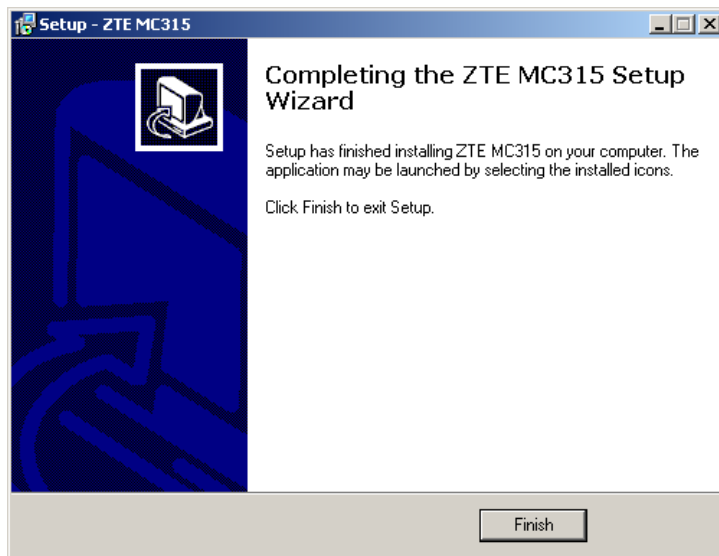
7. Please insert the MC315 card. (If your card is in the slot, please insert the card again)



8. Please wait for updating the driver.

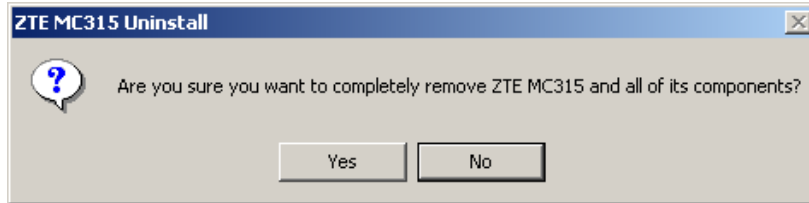


9. Click “Finish” to close the last screen of the wizard. Now you can start the application for MC315.

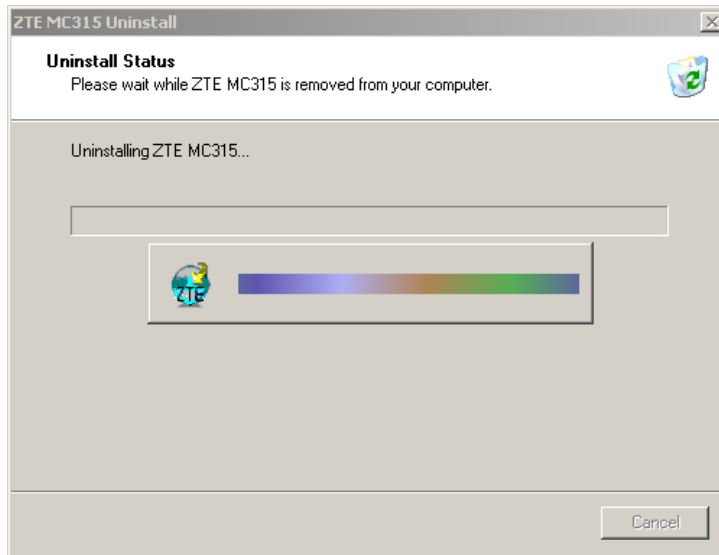


5.2.2 Uninstall

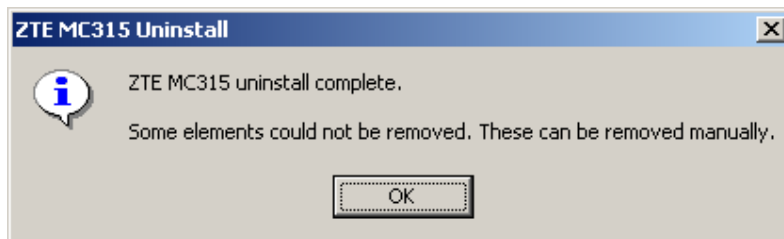
1. Select Start -> Programs -> ZTE MC315 -> Uninstall ZTE MC315. You will be asked if uninstall the card. Click “Yes”.



2. Please wait.



3. Click "OK" when you are notified that uninstall is complete.



5.3 Setup for Windows XP

5.3.1 Setup

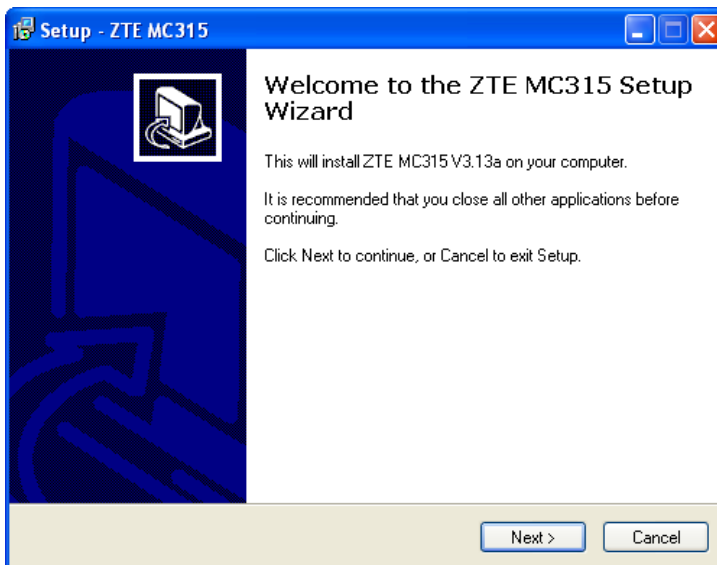
Note:

Don't insert the ZTE MC315 WIRELESS Card before setup.

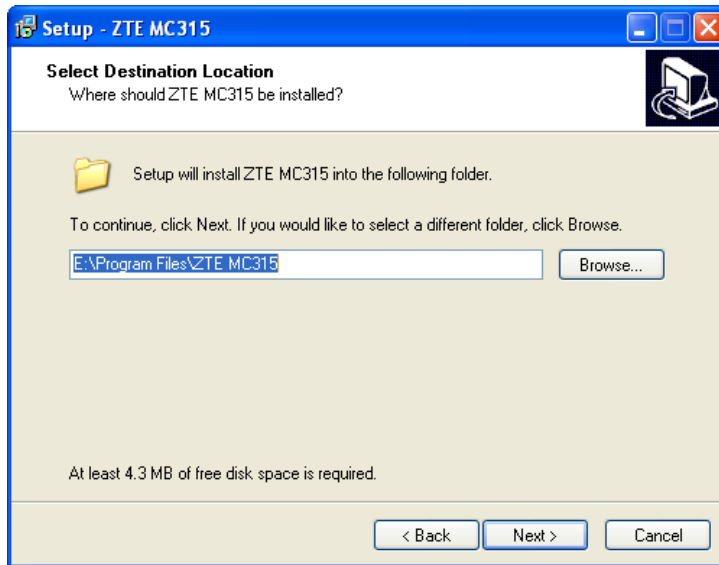
1. Please find “autosetup.exe” first in ZTE MC315 CD, and double click the icon of autosetup.exe, then choose “English” when the picture displayed in the screen.



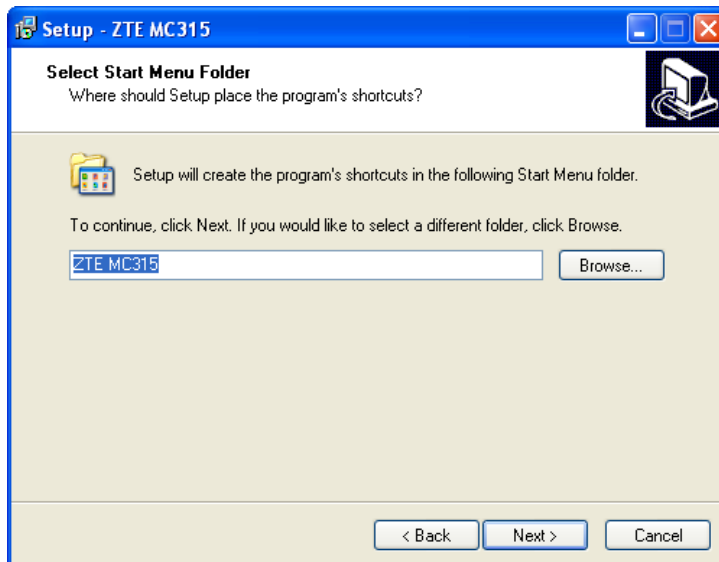
2. When you see this window, please click “next”.



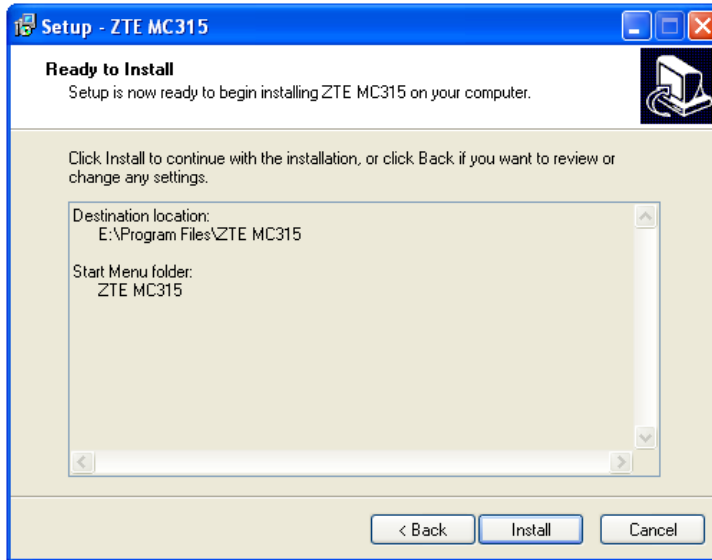
3. Select the location where the program is to be installed, then click “Next”.



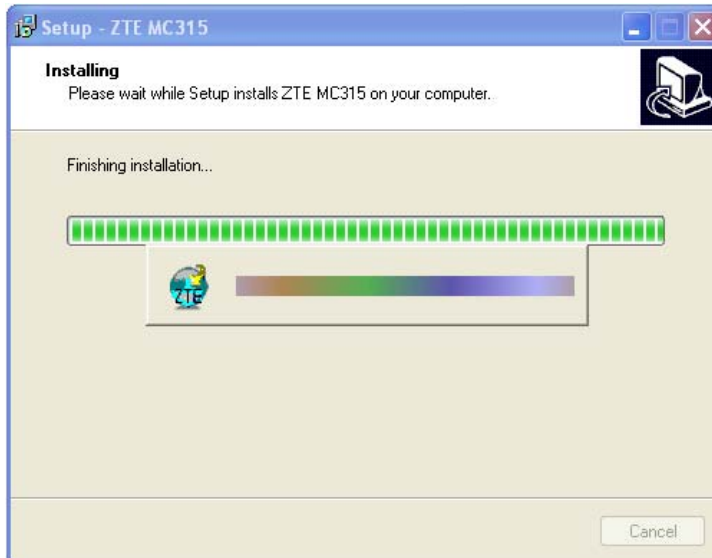
4. When you see this window, please click “next”.



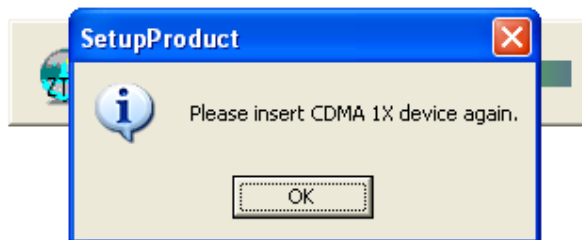
5. When you see this window, please click “install”.



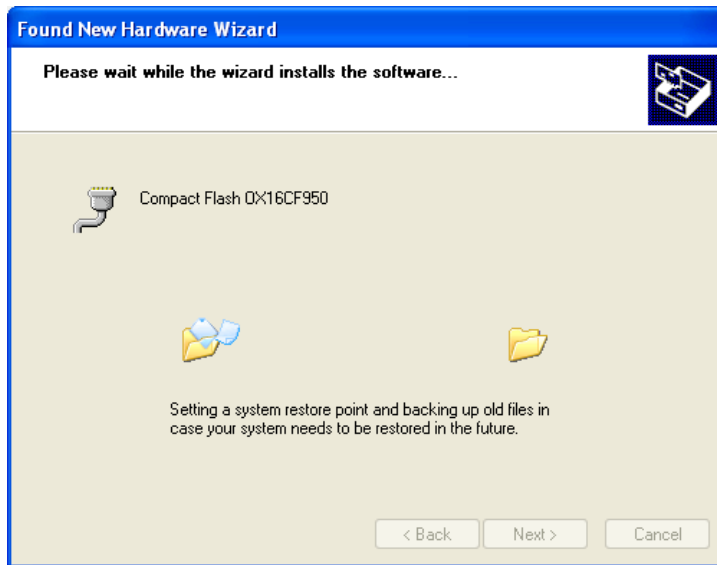
6. Please wait.



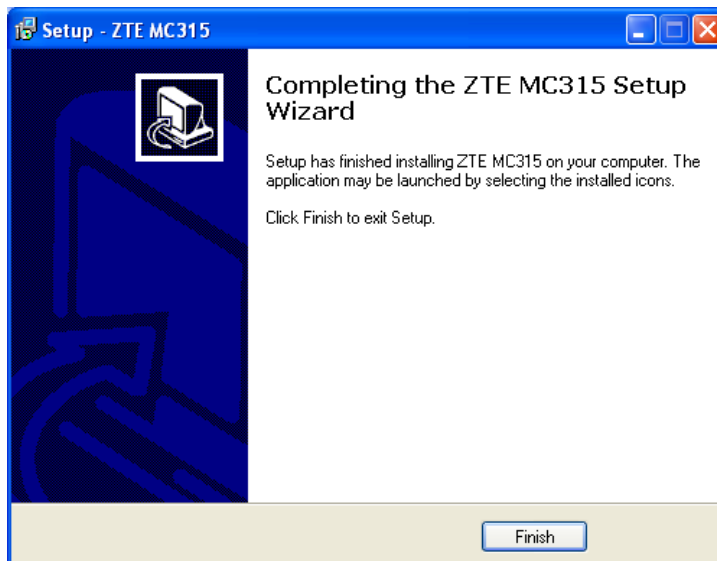
7. Please insert the MC315 card. (If your card is in the slot, please insert the card again)



8. Please wait for updating the driver.

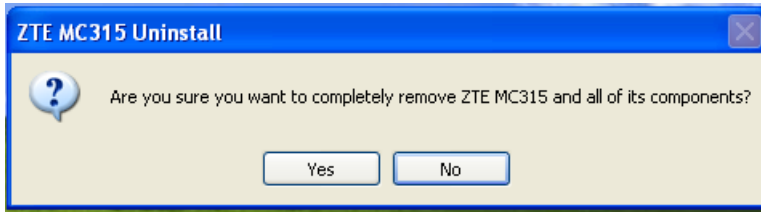


9. Click “Finish”. Now you can start the application for MC315.

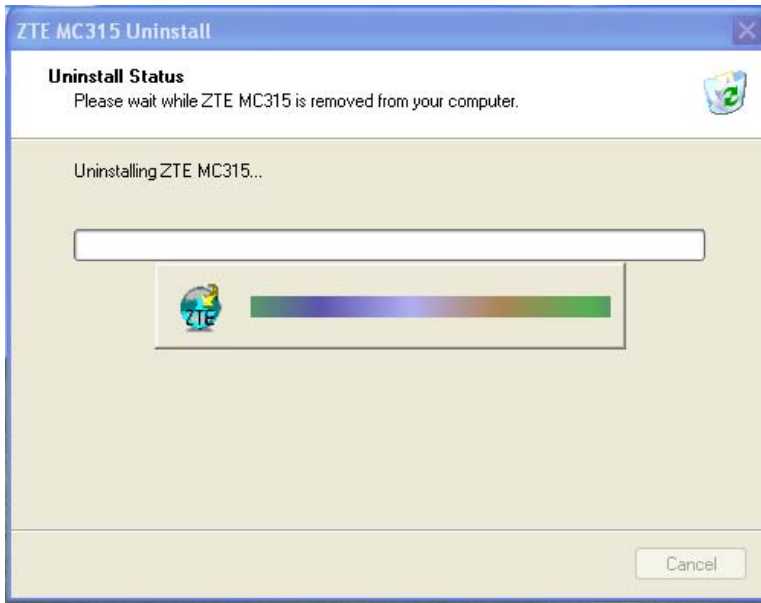


5.3.2 Uninstall

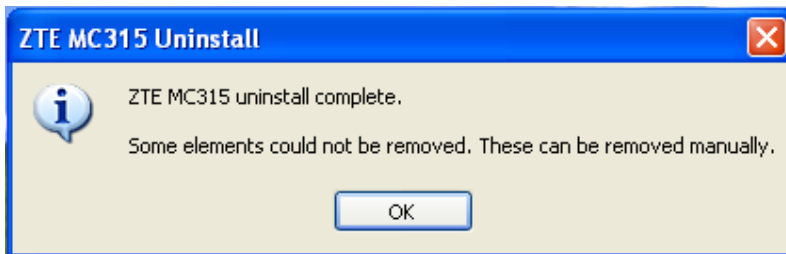
1. Select Start -> Programs -> ZTE MC315 -> Uninstall ZTE MC315. You will be asked if uninstall the card. Click “Yes”.



2. Please wait.

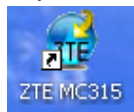


3. Click "OK" when uninstall is complete.



6. The Main Window and Icons

You can launch the program by:

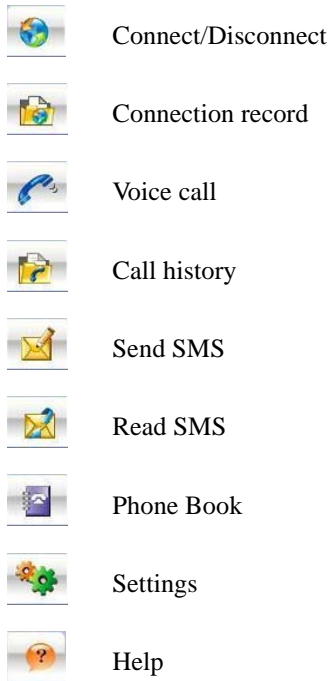


- Double clicking the icon of MC315 in the desktop.

- Or selecting Start -> Programs -> ZTE MC315 -> ZTE MC315.

After initialization, the main window of the application will be displayed in the screen.

There are icons in the top of the main window. That indicate:



7. Connect/Disconnect



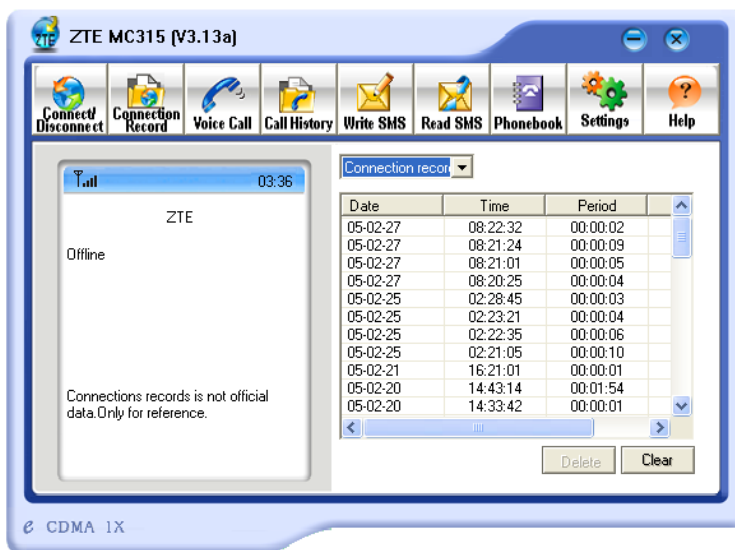
Connect to network:

1. Click “connect/disconnect” icon in main window.
2. Click “connect” button.

Disconnect:

1. Click “disconnect” button.

8. Connection Record

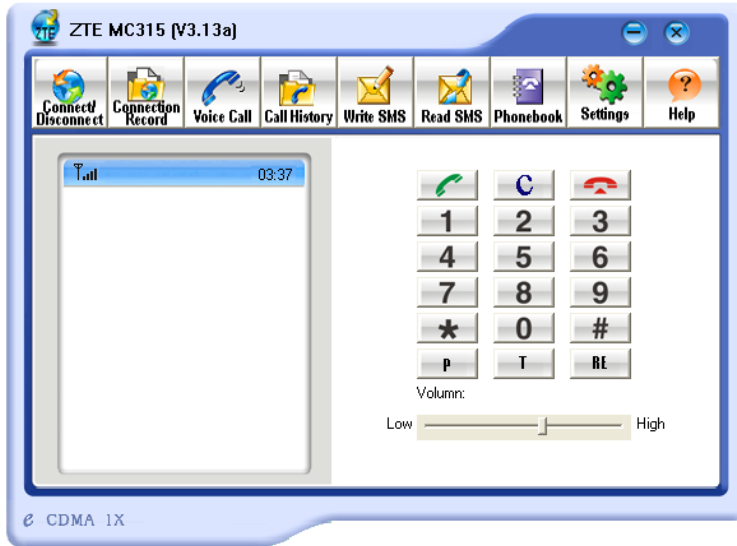
**Note:**

Connection Record is not official data. It's only for users' reference.

The connection record is displayed when you click the “Connection record” icon.

It records connect time and upload/download bytes for each connection. And it lists the monthly statistics.

9. Voice call




Note:


1. Please confirm your earphone is connected with the wireless card when you want to make a voice call.
2. You can activate or deactivate the supplement services (call forward, call waiting etc.) by dialing the feature code. Please contact service provider for more detail.

The dialing pad for the card is displayed when you click the “Voice call” icon. This performs the same functions as the dialing pad on a mobile phone.

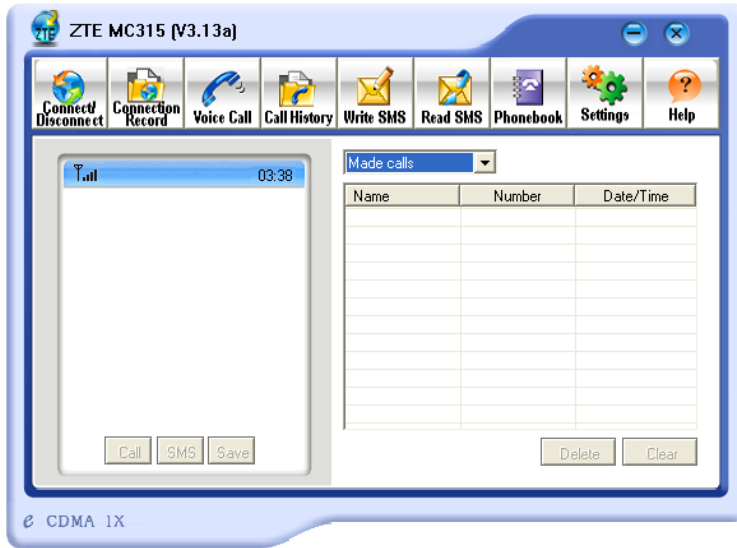
Made a call:

1. Plug the earphone in the MC315 card if it is not plugged in the card.
2. Click “voice call” icon;
3. Enter the number you want to dial by either clicking the number buttons on the dial pad or typing the numbers on your keyboard.
4. Click the button .

Answer a call:

1. Connect an earphone to the card, if one is not already connected.
2. Click button .

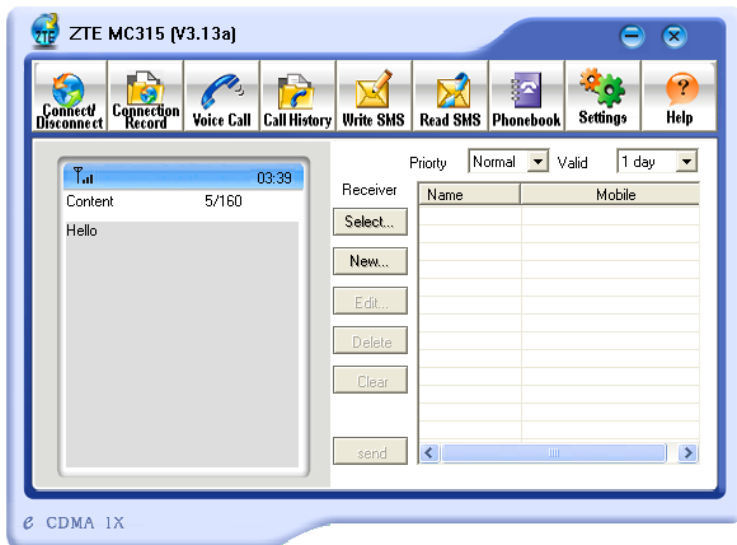
10. Call History



Call history maintains a record of your outgoing, incoming and missed calls.

You can add an entry to the Phone Book, make a call to a number contained in one of the call records, and send messages to a number contained in one of the call records.

11. Send Short Messages



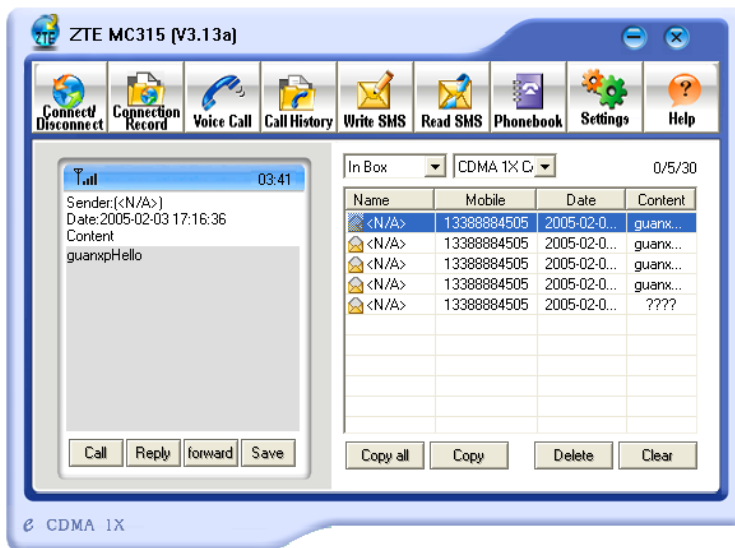
To send SMS message:

1. Click “Send SMS” icon in the window.
2. Input the message in the screen that is on the left screen of the window.
3. Click “Add” button to enter the recipients for the message by typing the phone numbers.
Or click “Select” button to enter recipients for the message by selecting from the phone book.
4. You can enter multiple recipients.
5. You can select “priority” and “valid period”.
6. Click “Send” button to send the message.

Note:

The successful sent message will be stored in outbox.

12.Read Short Messages



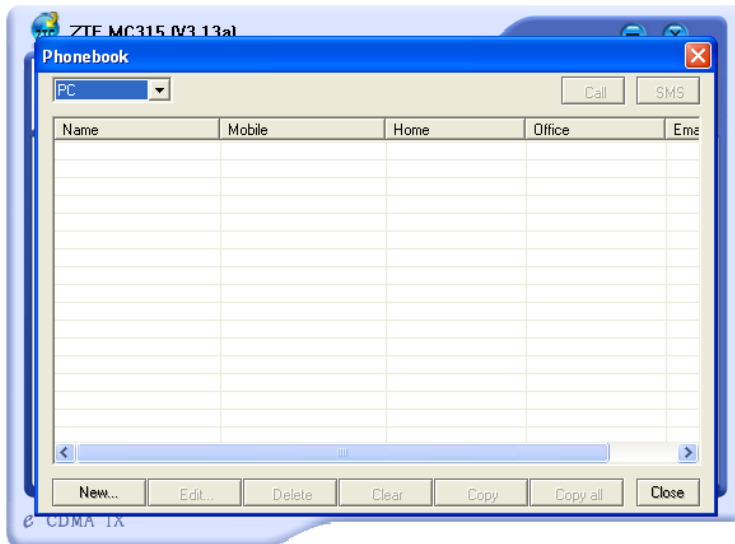
Incoming messages are stored in the Inbox. Outgoing messages are stored in the Outbox. In the Inbox or Outbox, you can view the messages, reply the messages, transfer the messages, and save the sender's number of the messages.

Messages store in PC or UIM card. You can copy them from one storage media to another by clicking “Copy” or “Copy all” button.

To read SMS messages:

1. Click “read SMS” icon in the window.
2. Select the Inbox or Outbox in the drop-down menu.
3. Click the message you want to read in the messages list that is in the right screen of the window.
4. You can view the content of the message in the left screen of the window.

13. Phone Book



The Phone Book provides a place to store the phone numbers and e-mail addresses of people you contact.

To open the Phone Book:

1. Click “phonebook” icon in the window. Then you’ll see the Phone Book window which lists the Phone Book entries.

To add an entry to the Phone Book:

1. Open the Phone Book.
2. Click “New” button in the window.
3. Enter the person’s name and any phone numbers and/or e-mail addresses in the Contact detail’s window.
4. Click “OK” to save the entry.

To dial a phone number in the Phone Book:

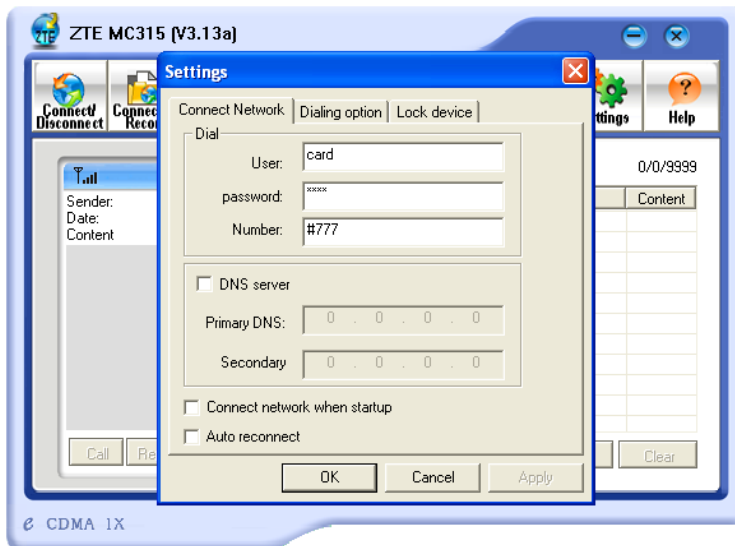
1. Select the entry in the Phone Book window.
2. Click “Call” button.

To send a message in the Phone Book:

1. Select the entry in the Phone Book window.
2. Click “SMS” button.

The Phone Book records can be stored in the PC or UIM card. You can copy them from one storage media to another by clicking “Copy” or “Copy all” button.

14. Settings



Connection settings:

You can set the network connection parameters.

The settings are different in various networks.

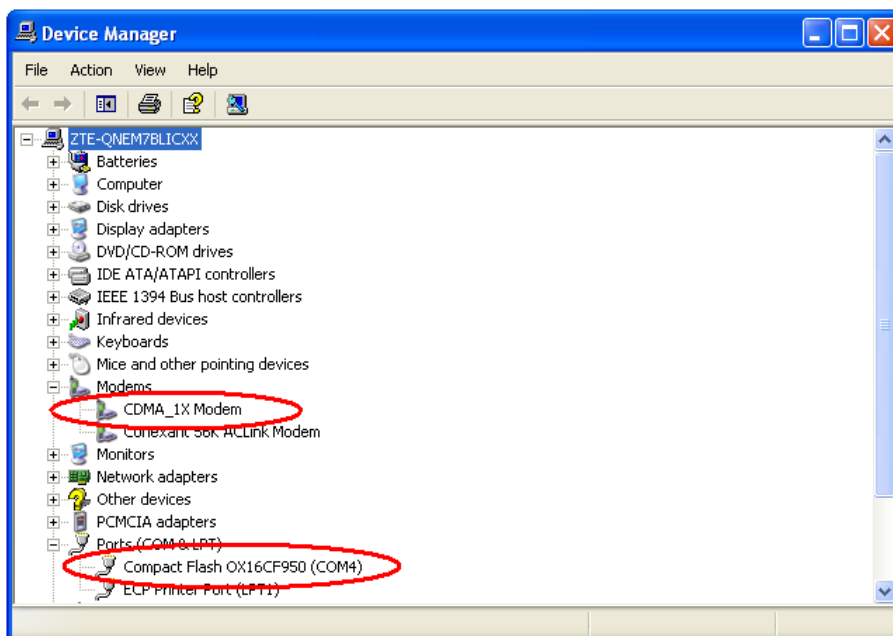
For example:

In China Unicom, they are:

1. User: card
2. Password: card
3. Number: #777

15. Trouble Shooting

When properly installed, you can find the port “Compact Flash OX16CF950” and the modem “CDMA_1X Modem” in your computer’s device manager.



If you can't find the devices, uninstall the application and setup it again.

This section describes how to diagnose and solve these and other problems. If, after reading this section, you are unable to resolve a problem:

- Check for the latest MC315 troubleshooting solutions at //www.zteit.com
- Contact your service provider.

| Symptoms | Possible causes | Suggestions |
|---|--|--|
| The window displays the message: "Initialize failed. Can not open the serial port" | The card is not in the slot | Close the MC315 application and Re-insert the MC315 card, then run the application again |
| | Other application is using the card. Such as "Hyper terminal". | Close other applications. Then run the MC315 application. |
| The window displays the message: "MC315 can not find the UIM card" | The R-UIM card is not inserted in the MC315 card | Insert the R-UIM card in the MC315 card |
| | The R-UIM card is inserted on the wrong side | Insert the R-UIM card according to the indicator in the MC315 card |
| | The R-UIM card error | Change R-UIM card |
| No signal indicated | Antenna is not plugged in the MC315 card | Plug the antenna in the MC315 card |
| | Out of the network service area | Confirm it is in the CDMA network service area |
| | Poor network signal | Reorientate your antenna |

| Symptoms | Possible causes | Suggestions |
|--|---|--|
| When attempting a dial-up data connection, window displays the message, " The remote computer is not responding " | User name or password is wrong. | Correct the settings. You can get the information from your service provider. e.g. In China Unicom, they are: User: card Password: card Number: #777 |
| | Your account does not have enough money | Put money into your account or Contact your service provider |

16.FCC RF Exposure Information

This device has been tested for FCC RF exposure requirements in a laptop PC. When using this device with the host laptop PC placed on the user's lap, the antenna must be placed in the vertical upright position in order to comply with FCC RF exposure requirements. For all other laptop PC operating configurations, a 1.5 cm separation distance must be maintained between the antenna and the user/nearby persons in order to comply with FCC RF exposure requirements.