



# **ZTD32/MF871A** **USB Modem** Quick Start Guide

ZTE CORPORATION  
ZTE Plaza, Keji Road South, Shenzhen, China  
Tel: +86-755-26779999  
URL: <http://www.ztedevice.com>  
E-mail: [mobile@zte.com.cn](mailto:mobile@zte.com.cn)

## **LEGAL INFORMATION**

Copyright © 2015 ZTE CORPORATION.

All rights reserved.

No part of this publication may be excerpted, reproduced, translated or utilized in any form or by any means, electronic or mechanical, including photocopying and microfilm, without the prior written permission of ZTE Corporation.

The manual is published by ZTE Corporation. We reserve the right to make modifications on print errors or update specifications without prior notice.

**Version No. :** R1.0

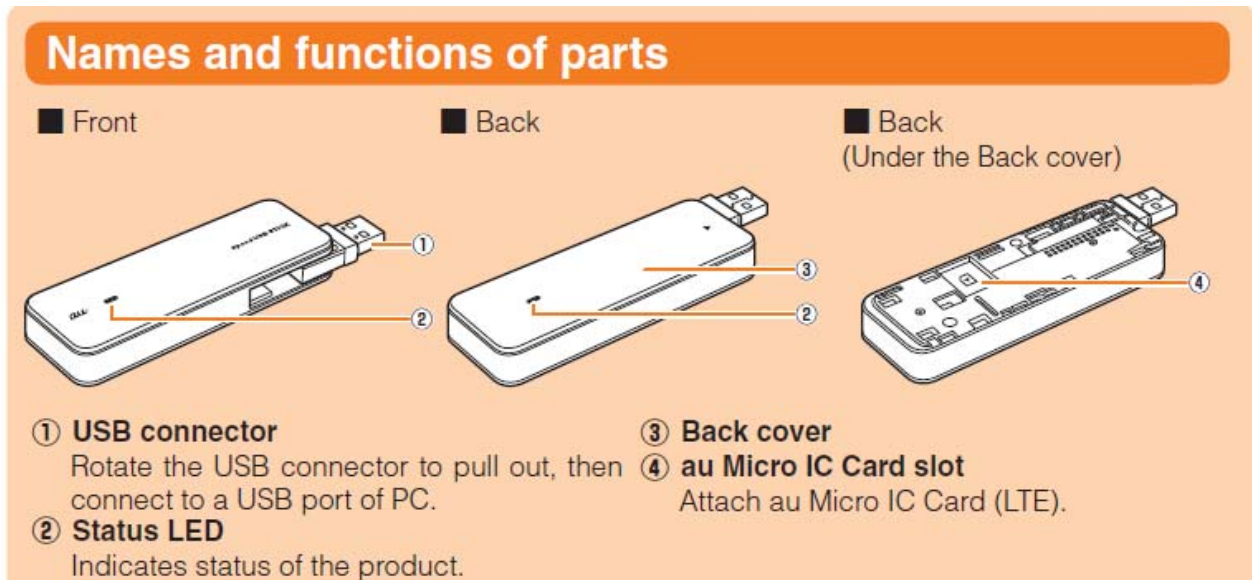
**Edition Time:** January 6, 2016

**Manual No.:**

## Getting to Know Your Modem

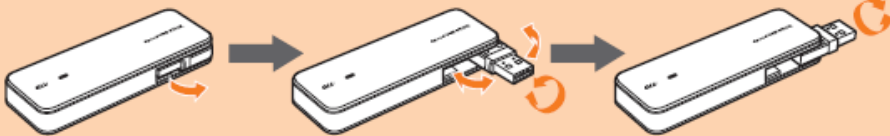
Your modem supports data service through the mobile phone network, enabling you to communicate anytime and anywhere.

The following figure is only for your reference. The actual product may be different.



### ■ Attaching to a PC

Unfold the USB connector. The USB connector can be unfolded up to 180 degree and the top part can be rotated up to 180 degree.



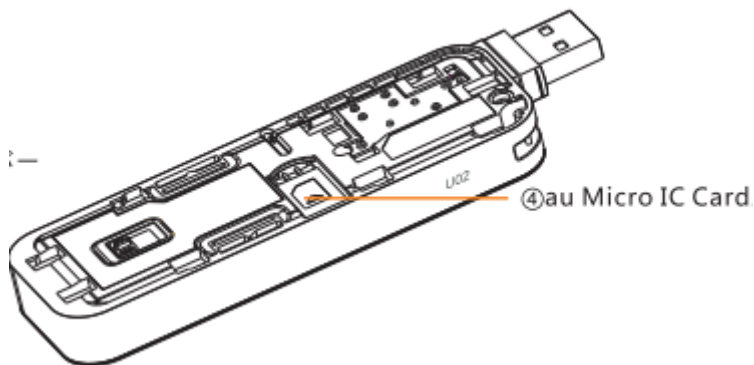
- Stow the USB connector back after removing the product from a PC.
- \* Do not unfold the USB connector more than 180 degree.
- \* Do not rotate the top of the USB connector more than 180 degree.

### ■ Status LED indications

The product status is indicated by LED lightings.

LED color and lighting pattern	Status	LED color and lighting pattern	Status
Flashes in red	Activating	Blinks in light blue	WiFi 2+/UMTS Connected (Signal: Weak)
	Out of service area		Lights in green
Blinks in red	au Micro IC Card (LTE) not inserted, PIN/PUK request	Blinks in green	
Lights in red	Stand-by	Flashes in green	Updating software
Lights in light blue	WiFi 2+/UMTS Connected (Signal: Weak)		

## Installing the (U)SIM Card

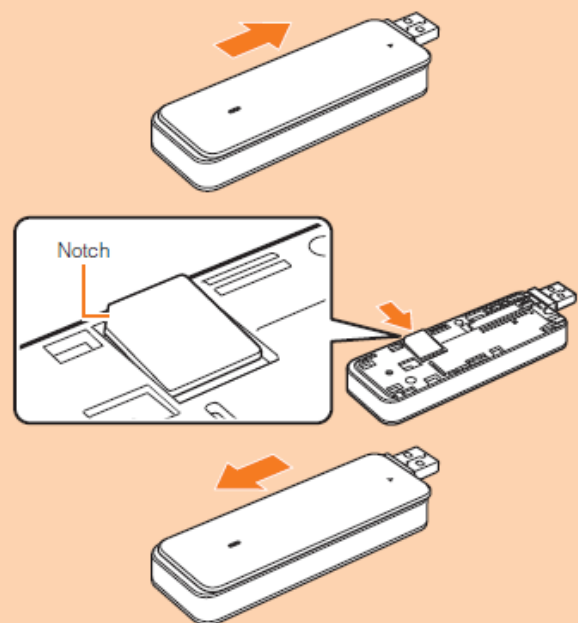


**1** Slide the back cover in the direction of arrow to remove

**2** Face IC part of au Micro IC Card (LTE) down and insert it in the direction of arrow

- Check the notch orientation.

**3** Make sure that au Micro IC Card (LTE) is fully set in, then attach the back cover sliding in the direction of arrow



## Connecting the Modem to Your PC

### Setting up on Windows PC

Connect the product to a Windows PC and start setup. Steps under Windows 7 are explained here.

#### 1 Power on a PC to activate the OS

#### 2 Connect the product with au Micro IC Card (LTE) attached to the PC USB port

#### 3 Select "AutoRun.exeの実行 (AutoRun.exe)"

- When "ユーザーアカウント制御 (User Account Control)" screen appears, click "はい (Yes)".
- If "自動再生 (Auto run)" settings on Windows 7 PC is changed, "AutoRun.exeの実行 (AutoRun.exe)" does not appear, the installation starts instead.
- When a installation confirmation message appears, click "はい (Yes)".

#### 4 The installation starts

When "Speed USB STICK setting tool" shortcut icon is displayed in the PC desktop, the installation is complete.

### Accessing Internet

To perform data communication accessing Internet, subscription to corresponding Internet Service provider (ISP) is required.

For details, refer to the latest au catalogs/au homepage.

- For corresponding ISP, refer to au homepage. Services of corresponding ISP and the settings vary by ISP. Contact your corresponding ISP.

### Changing the access point profile

In the product, "Internet" is set as an Internet access point (Profile) in advance. Change, create or edit profile using Speed USB STICK setting tool.

#### ■ Changing the profile

To change the access point, from the Speed USB STICK setting tool top page, change Profile in Change Profile.



## Speed USB STICK setting tool

Use a Web browser on a PC with the product connected to change the product settings.

**1 Connect the product to a PC and double-click "Speed USB STICK setting tool" shortcut icon on the desktop (or dock for the Mac)**

Web browser activates, then Speed USB STICK setting tool top page appears.

- For setting each function of the product, select "To Advanced" to go to the function setting screen.

**■ Switching to English display**

In Speed USB STICK setting tool top page, select "English" for 言語 (Language).

## International roaming

For overseas use of the product, activate Speed USB STICK setting tool to change the network operator you use in the country.

Even if the roaming setting is on, you can use your domestic network in Japan.

**1 From the Speed USB STICK setting tool top page, "To Advanced" → "Basic Settings" → "Roaming Settings"**

**2 Turn on International Roaming Setting, then select Roaming Mode**

**3 Select "Apply", then "Continue"**

## Warning and Notice

### To the Owner

- If inadequately shielded, some electronic devices may be affected by the electromagnetic interference caused by the modem, such as the electronic system of vehicles. Consult the manufacturers of such devices before using the modem if necessary.
- Operating the modem may interfere with medical instruments such as hearing aids and pacemakers. Always keep the modem more than 20 centimeters away from such medical instruments when your modem is turned on. Turn the modem off if necessary. Consult a physician or the manufacturers of medical instruments before using the modem if necessary.
- Be aware of the usage limitation when using the modem at places such as oil warehouses or chemical factories, where there are explosive gases or explosive products being processed. Turn off the modem if necessary.
- Do not use electronic transmission devices in aircrafts, at petrol stations or in hospitals. Observe and obey all warning signs, and turn off the modem in these conditions.
- Do not touch the inner antenna area unless it is necessary. Otherwise the performance of the modem may be affected.

- Keep the modem out of the reach of little children. The modem may cause an injury if used as a toy.
- When the modem is operating, do not touch the metallic parts. Failing to do so may cause burns.

## **Using Your USB Modem**

- Use original accessories or accessories that are authorized. Using any unauthorized accessories may affect the performance of the modem and violate the related national regulations about telecom terminals.
- Avoid using the modem near or inside metallic structures or establishments that can emit electromagnetic waves, because signal reception may be affected.
- The modem is not waterproof. Keep the modem dry and store it in a shady and cool place.
- Do not use the modem immediately after a sudden temperature change. In such case, dew may be generated inside and outside the modem, so do not use it until it becomes dry.
- Handle the modem carefully. Do not drop, bend or strike it. Otherwise the modem may be damaged.
- Only qualified personnel can dismantle and repair the modem.
- The product shall only be connected to a USB interface of version USB2.0
- Body-support device test at a typical mode of body support position with minimum 5mm distance

An operating temperature between -10°C and +45°C and humidity between 5% and 95% are recommended.

## **Limited Warranty**

- This warranty does not apply to defects or errors in the product caused by:
  - i. Reasonable abrasion.
  - ii. End users' failure to follow ZTE's installation, operation or maintenance instructions or procedures.
  - iii. End users' mishandling, misuse, negligence, or improper installation, disassembly, storage, servicing or operation of the product.

- iv. Modifications or repairs not provided by ZTE or a ZTE-certified individual.
- v. Power failures, surges, fire, flood, accidents, and actions of third parties or other events outside ZTE's reasonable control.
- vi. Usage of third-party products, or usage in conjunction with third-party products if such defects are due to the combined usage.
- vii. Any other cause beyond the range of normal usage intended for the product.

End users have no right to reject or return the product, or receive a refund for the product from ZTE under the above-mentioned situations.

- This warranty is end users' sole remedy and ZTE's sole liability for defective or nonconforming items, and is in lieu of all other warranties, expressed, implied or statutory, including but not limited to the implied warranties of merchantability and fitness for a particular purpose, unless otherwise required under the mandatory provisions of the law.

### **Limitation of Liability**

ZTE shall not be liable for any loss of profits or indirect, special, incidental or consequential damages resulting from or arising out of or in connection with using of this product, no matter whether or not ZTE had been advised, knew or should have known of the possibility of such damages, including, but not limited to lost profits, interruption of business, cost of capital, cost of substitute facilities or product, or any downtime cost.

### **FCC Caution**

This device complies with part 15 of the FCC Rules. Operation is subject to the following two conditions: (1) This device may not cause harmful interference, and (2) this device must accept any interference received, including interference that may cause undesired operation.

**Note:** This equipment has been tested and found to comply with the limits for a Class B digital device, pursuant to part 15 of the FCC Rules. These limits are designed to provide reasonable protection against harmful interference in a residential installation. This equipment generates uses and can radiate radio frequency energy and, if not installed and used in accordance with the instructions, may cause harmful interference to radio communications. However, there is no guarantee that interference will not occur in a particular installation. If this equipment does cause harmful interference to radio or television reception, which can be determined by turning the equipment off and on, the user is encouraged to try to correct the interference by one or more of



the following measures:

- Reorient or relocate the receiving antenna.
- Increase the separation between the equipment and receiver.
- Connect the equipment into an outlet on a circuit different from that to which the receiver is connected.
- Consult the dealer or an experienced radio/TV technician for help.

Any Changes or modifications not expressly approved by the party responsible for compliance could void the user's authority to operate the equipment

### **Body Operation**

This device was tested for typical body support operations. To comply with RF exposure requirements, a minimum separation distance of 0.5 cm must be maintained between the user's body and the device, including the antenna. Third-party belt-clips, holsters, and similar accessories used by this device should not contain any metallic components. Body accessories that do not meet these requirements may not comply with RF exposure requirements and should be avoided. Use only the supplied or an approved antenna.

### **Getting More Help**

You can get help by:

- Sending an email to **mobile@zte.com.cn**
- Visiting **www.ztedevice.com**
- Calling the service hotline: **+86-755-26779999**

Regulatory Conformance Hereby, ZTE Corporation declares that this device is in compliance with the essential requirements and other relevant provisions of Directive 1999/5/EC.

**CE0700**