

R206-Z

# Let's go

Getting started with your device.

ZTE CORPORATION  
NO. 55, Hi-tech Road South, ShenZhen, P.R.China  
Postcode: 518057

**LEGAL INFORMATION**

Copyright © 2013 ZTE CORPORATION.

All rights reserved.

No part of this publication may be excerpted, reproduced, translated or utilized in any form or by any means, electronic or mechanical, including photocopying and microfilm, without the prior written permission of ZTE Corporation.

The manual is published by ZTE Corporation. We reserve the right to make modifications on print errors or update specifications without prior notice.

Version No. : R1.1  
Edition Time : 2.5.2013

**NOTE:**

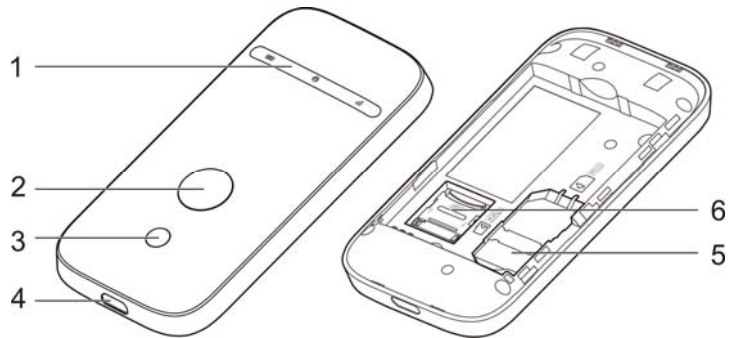
Do not use the device in an enclosed environment or where heat dissipation is poor. Prolonged work in such space may cause excessive heat and raise ambient temperature, which may lead to automatic shutdown of the device for your safety. In the case of such event, cool the device in a well-ventilated place before turning on for normal use.

## Getting to Know Your Device

### Appearance

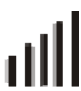


The following figure is only for your reference. The actual product may be different.

1. LED Indicators
2. Power Button
3. WPS Button
4. Micro USB Port
5. (U)SIM Card Slot
6. microSD Card Slot



**NOTE:** microSD logo  is a trademark of SD Card Association.

### Indicators

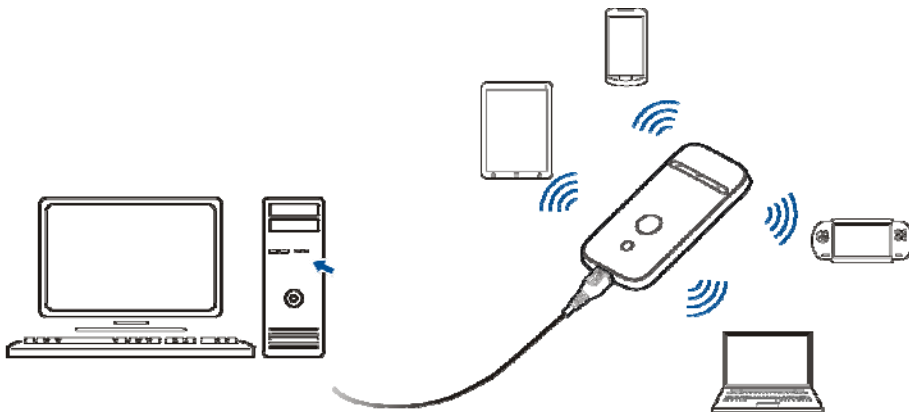
Indicator	Status	Description
Network 	Red solid	Error status. Not registered to the mobile network, no (U)SIM card inserted or no network service available.
	Green solid	Registered to the mobile network.
	Green blinking	Connected to the mobile network and data is being transferred.
Wi-Fi 	Blue solid	Wi-Fi is active.
	Blue blinking	WPS is active.
	LED light off	Wi-Fi is off or your device is in sleep mode.
Battery 	Red solid/ blinking	The battery is low. Please charge the battery.
	Green blinking	The battery is being charged.
	Green solid	The battery level is middle or high.

	LED light off	Your device is in standby mode and not being charged, or the battery is not inserted.
--	---------------	---

**Connection Scenario**

Your device supports two methods to connect to the Internet and supports multi-clients for surfing on the Internet at the same time. The following figure is only for your reference.

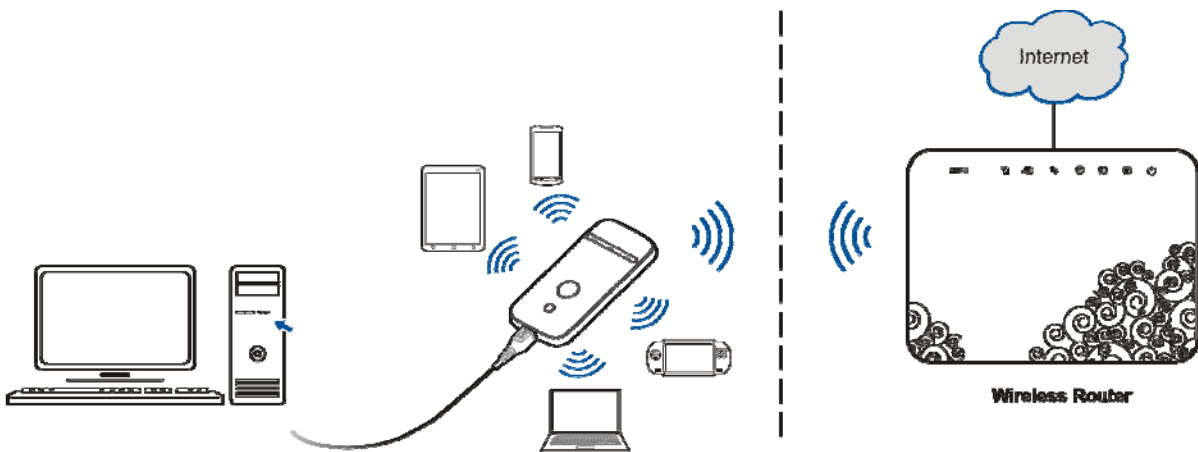
- **3G Mode:** Use your (U)SIM card to access the Internet.



- **AP Station Mode:** Your device will connect to other WLAN device (hotspot device, wireless router, etc.) via Wi-Fi to access the Internet. The WLAN device has already connected to the Internet.

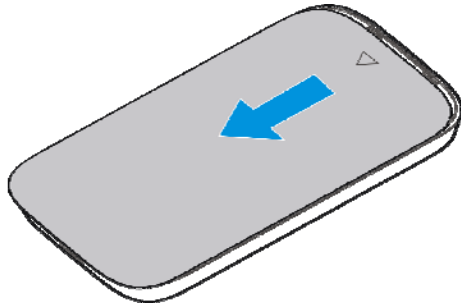
**NOTE:**

The subnets of your device and other WLAN device must be different.



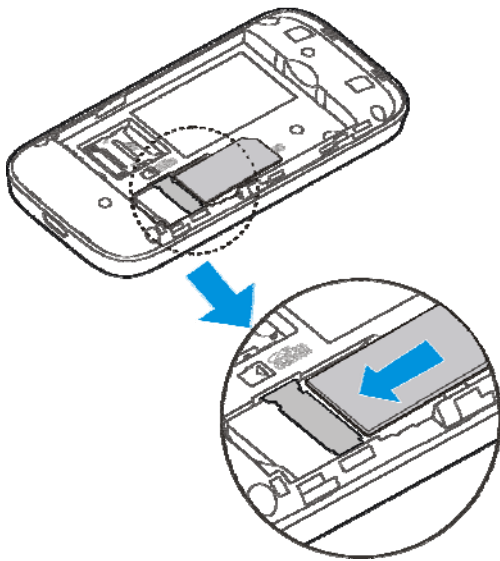
**Installing Your Device**

1. Slide the back cover and remove it

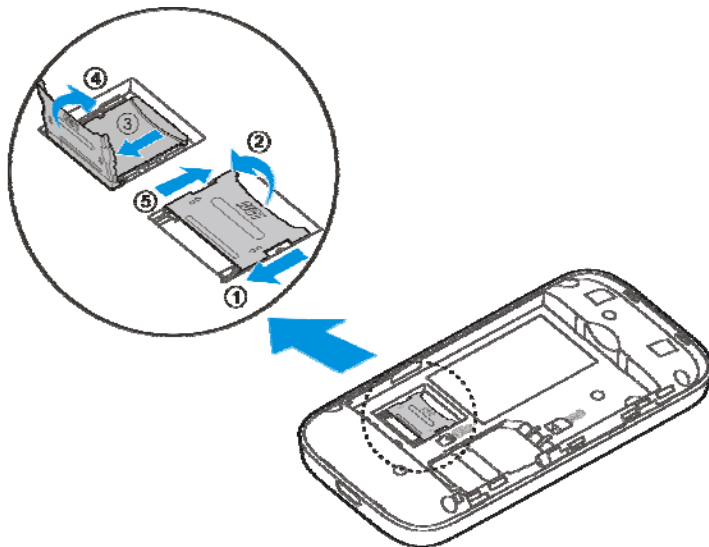


2. Insert the (U)SIM card.

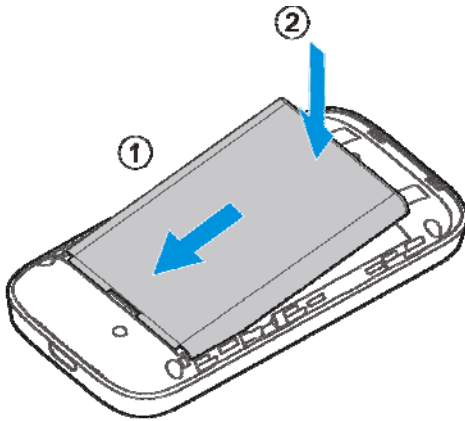
**IMPORTANT:** Your device does not support Micro/Nano or any other nonstandard SIM cards. To avoid device damage, please do not use them.



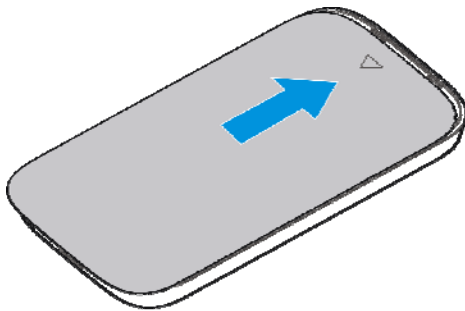
3. Insert the microSD card if necessary.



4. Insert the battery.



5. Close the back cover.



## Connecting to Your Device

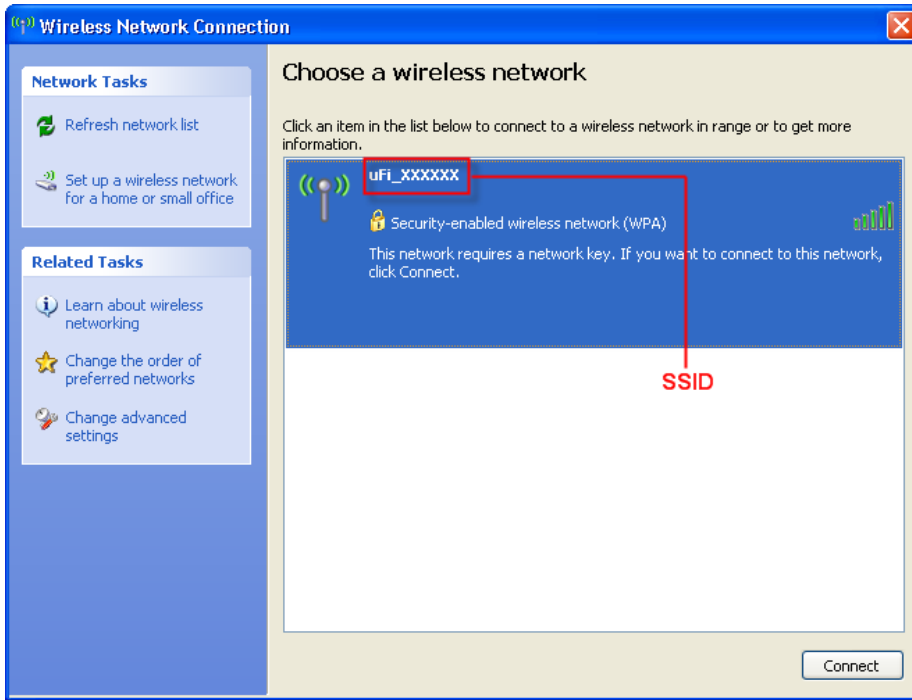
### Via Wi-Fi

1. Power on your device directly. It will take 1~2 minutes to initialize.
2. Use your normal Wi-Fi application on the client to search for the available wireless networks.



**NOTE:** Please set the client to obtain an IP address automatically referring to the chapter “Configuring your PC”, and then the client will get an IP address like “192.168.0.101”.

3. Select the SSID of your device, and then click **Connect**.



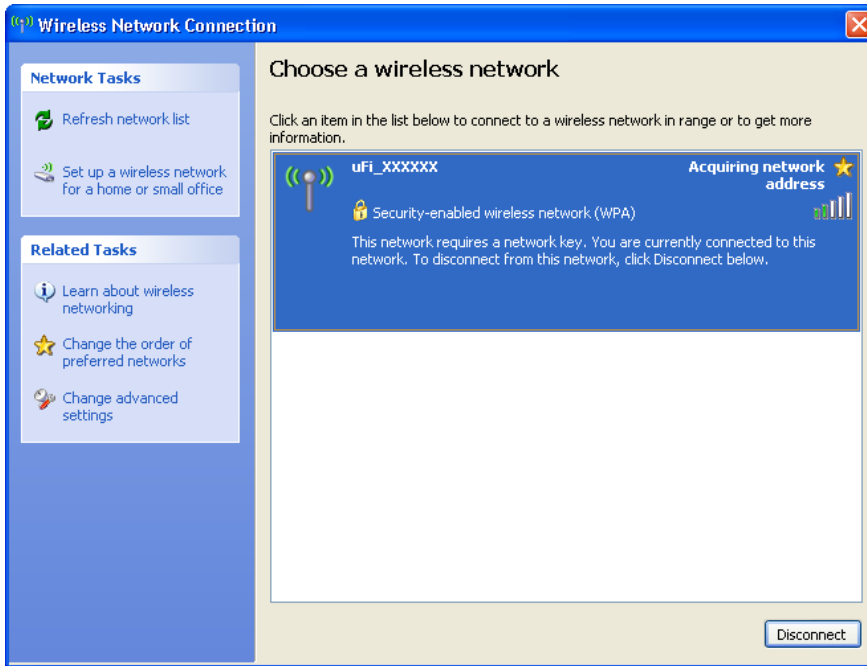
**NOTE:**  
Please check the label on your device to get the default SSID.

4. Input the password, and then click **Connect**.



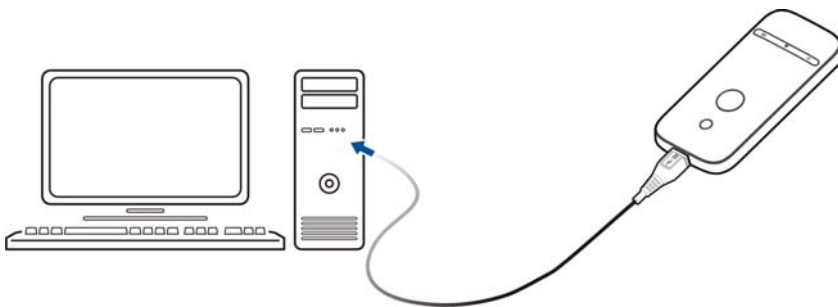
**NOTE:**  
You may need to input the password for Wi-Fi connection. Please check the label on your device to get the default.

5. Wait a moment, and then the client will connect to your device successfully.



**Via USB Cable**

1. Connect to the device.



2. Power on your device.
3. The OS detects and recognizes new hardware and finishes the installation automatically.

**NOTE:** If the system does not launch installation automatically, you can run the installation program in path of **My Computer > ZTEMODEM**.

4. Wait a moment, and then the client will connect to your device successfully.

**Accessing the Internet**

**3G Mode**

After the client connected to your device successfully, you can access the Internet in the **Automatic** or **Manual** mode. The default mode is **Automatic**.

Mode	Operations
Automatic	Your device will connect to the Internet automatically, and your clients can surf on the Internet directly.
Manual	Log in the webGUI configuration page, and select <b>Settings &gt; 3G</b>



**Settings > Network Select > WAN Connection Mode > Manual**, and then click **Connect** or **Disconnect**.

**NOTE:**

If you want to modify the detailed parameters of your device, please log in the webGUI configuration page by visiting <http://192.168.0.1> or <http://m.home>. The default password is **admin**.

### AP Station Mode

1. Log in the webGUI configuration page.
2. Select **Settings > AP Setting**.
3. Set the **WLAN** and **WLAN mode**, and then click **Apply**.

**NOTE:**

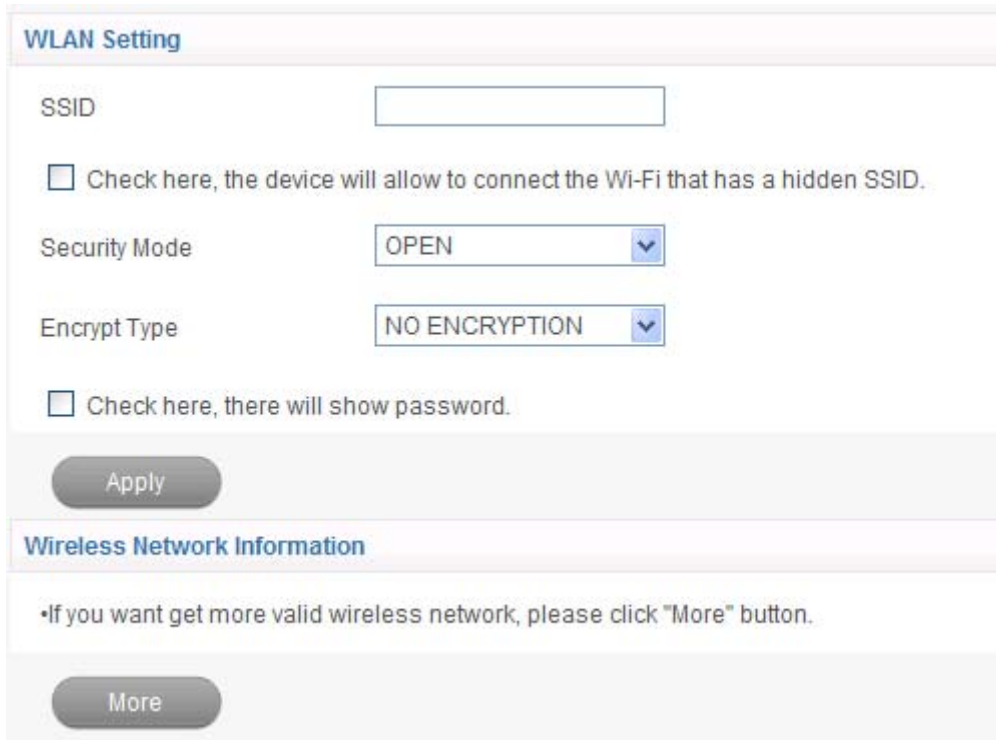
You need to set the **WLAN On** and select **Wi-Fi Prior**.

The screenshot shows two configuration sections. The first section is titled 'WLAN' and contains a radio button labeled 'WLAN' which is selected (indicated by a green dot), with options 'On' and 'Off'. Below this is a grey 'Apply' button. The second section is titled 'WLAN mode' and contains a radio button labeled 'WLAN mode' which is selected (indicated by a green dot), with options 'Wi-Fi Prior' and '3G Prior'. Below this is another grey 'Apply' button.

4. Connect to the WLAN device.

There are two methods for your reference.

- ▶ Input the WLAN device information in the **WLAN Setting** area, and then click **Apply**.
- ▶ Click **More**, select this WLAN device which will be listed, and then click **Connect**.

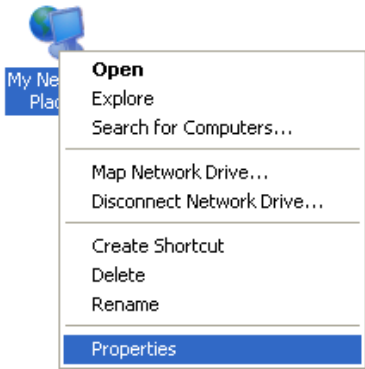


5. After the client connected to the WLAN device successfully, you can access the Internet.

### Configuring Your PC

Follow the following steps and figures for Windows XP to configure the Internet Protocol for your Wi-Fi connection.

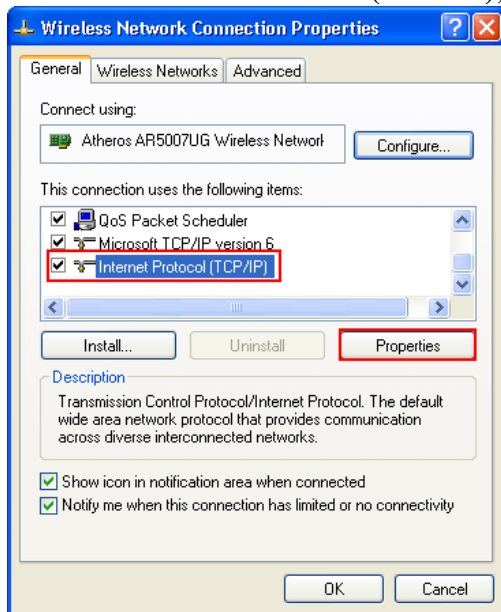
1. Right-click **My Network Places**, and then select **Properties**.



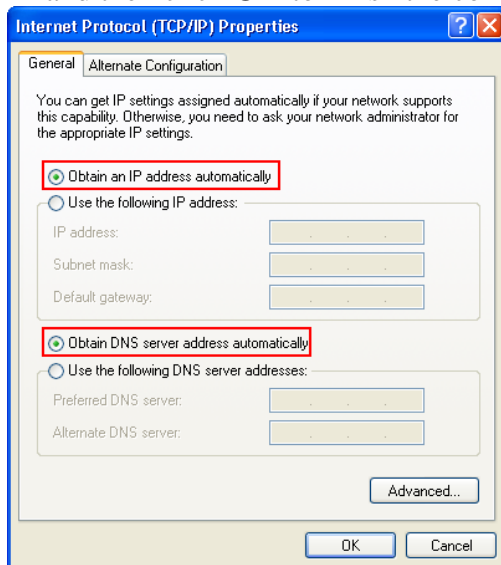
2. Right-click **Wireless Network Connection**, and then select **Properties**.



3. Select **Internet Protocol(TCP/IP)**, and then click **Properties**.



4. Select **Obtain an IP address automatically** and **Obtain DNS server address automatically**, and then click **OK** to finish the configuration.



## Warning and Notice

### To the Owner

- Some electronic devices are susceptible to electromagnetic interference sent by your device if inadequately shielded, such as the electronic system of vehicles. Please consult the manufacturer of your device before using if necessary.
- Operating your device may interfere with medical devices like hearing aids and pacemakers. Please always keep them more than 20 centimeters away from such medical devices when they are turned on. Turn your device off if necessary. Consult a physician or the manufacturer of the medical device before using your device.
- Be aware of the usage limitation when using your device at places such as oil warehouses or chemical factories, where there are explosive gases or explosive products being processed. Turn off your device if

required.

- The use of electronic transmitting devices is forbidden in aircrafts, at petrol stations and in hospitals. Please observe and obey all warning signs and switch off your device in these conditions.
- Do not touch the inner antenna area if not necessary. Otherwise it will affect your device's performance.
- Store your device out of the reach of little children. Your device may cause injury if used as a toy.
- Do not touch the metallic parts of your device so as to avoid a burn, when your device is working.

## Using Your Device

- Please use original accessories or accessories that are authorized. Using any unauthorized accessories may affect your device's performance, and violate related national regulations about telecom terminals.
- Avoid using your device near or inside metallic structures or establishments that can emit electromagnetic waves. Otherwise it may influence signal reception.
- Your device is not waterproof. Please keep it dry and store in a shady and cool place.
- Do not use your device immediately after a sudden temperature change. In such case, it will produce dew inside and outside your device, so don't use it until it becomes dry.
- Handle your device carefully. Do not drop, bend or strike it. Otherwise your device will be damaged.
- No dismantling by non-professionals and only qualified technicians can undertake repair work.
- Operating temperature range of 0°C ~ +35°C and humidity range of 5% ~ 95% are recommended.

## Using Battery

- Do not short-circuit the battery, as this can cause excessive heat and fire.
- Do not store battery in hot areas or dispose of it in a fire to avoid explosion.
- Do not disassemble or modify the battery.
- When not using the battery for a long period, remove it from your device and store it in a cool dry place.
- Never use any charger or battery damaged or worn out.
- Return the wear-out battery to the provider or put it in the appointed recycle place. Do not put it in familial rubbish.



### **WARNING:**

If the battery is broken, keep away from it. If it taints your skin, wash your skin with abundant fresh water and ask doctor help if necessary.

## Limited Warranty

- This warranty does not apply to defects or errors in the Product caused by:
  - i. Reasonable abrasion.
  - ii. End User's failure to follow ZTE's installation, operation or maintenance instructions or procedures.
  - iii. End User's mishandling, misuse, negligence, or improper installation, disassembly, storage, servicing or operation of the Product.
  - iv. Modifications or repairs not made by ZTE or a ZTE-certified individual.
  - v. Power failures, surges, fire, flood, accidents, actions of third parties or other events outside ZTE's reasonable control.
  - vi. Usage of third-party products, or usage in conjunction with third-party products provided that such defects are due to the combined usage.

vii. Any other cause beyond the range of normal usage intended for the Product.

End User shall have no right to reject or return the Product, or receive a refund for the Product from ZTE under the above-mentioned situations.

- This warranty is End User's sole remedy and ZTE's sole liability for defective or nonconforming items, and is in lieu of all other warranties, expressed, implied or statutory, including but not limited to the implied warranties of merchantability and fitness for a particular purpose, unless otherwise required under the mandatory provisions of the law.

### **Limitation of Liability**

ZTE shall not be liable for any loss of profits or indirect, special, incidental or consequential damages resulting from or arising out of or in connection with using of this product, whether or not ZTE had been advised, knew or should have known of the possibility of such damages, including, but not limited to lost profits, interruption of business, cost of capital, cost of substitute facilities or product, or any downtime cost.

### **FCC Regulations:**

This device complies with part 15 of the FCC Rules. Operation is subject to the following two conditions: (1) This device may not cause harmful interference, and (2) this device must accept any interference received, including interference that may cause undesired operation.

This device has been tested and found to comply with the limits for a Class B digital device, pursuant to Part 15 of the FCC Rules. These limits are designed to provide reasonable protection against harmful interference in a residential installation. This equipment generates, uses and can radiated radio frequency energy and, if not installed and used in accordance with the instructions, may cause harmful interference to radio communications. However, there is no guarantee that interference will not occur in a particular installation. If this equipment does cause harmful interference to radio or television reception, which can be determined by turning the equipment off and on, the user is encouraged to try to correct the interference by one or more of the following measures:

- Reorient or relocate the receiving antenna.
- Increase the separation between the equipment and receiver.
- Connect the equipment into an outlet on a circuit different from that to which the receiver is connected.
- Consult the dealer or an experienced radio/TV technician for help.

Caution: Changes or modifications not expressly approved by the party responsible for compliance could void the user's authority to operate the equipment.

### **FCC RF Exposure Information (SAR)**

This device is designed and manufactured not to exceed the emission limits for exposure to radio frequency (RF) energy set by the Federal Communications Commission of the United States.

During SAR testing, this device is set to transmit at its highest certified power level in all tested frequency bands, and placed in positions that simulate RF exposure in usage against the head with no separation, and near the body with the separation of 10 mm. Although the SAR is determined at the highest certified power level, the actual SAR level of the while operating can be well below the maximum value. This is because the device is designed to operate at multiple power levels so as to use only the power required to reach the network. In general, the closer you are to a wireless base station antenna, the lower the power output.

The exposure standard for wireless employs a unit of measurement known as the Specific Absorption Rate, or SAR. The SAR limit set by the FCC is 1.6W/kg.

This device is compliance with SAR for general population /uncontrolled exposure limits in ANSI/IEEE C95.1-1992, and had been tested in accordance with the measurement methods and procedures specified in OET Bulletin 65 Supplement C. This has been tested, and meets the FCC RF exposure guidelines when tested with the device directly contacted to the body.

The FCC has granted an Equipment Authorization for this model device with all reported SAR levels evaluated as in compliance with the FCC RF exposure guidelines. SAR information on this model device is on file with the FCC and can be found under the Display Grant section of [www.fcc.gov/oet/ea/fccid](http://www.fcc.gov/oet/ea/fccid) after searching on FCC ID: SRQR206-Z.

For this device, the highest reported SAR value for near the body is 1.29 W/kg.

While there may be differences between the SAR levels of various devices and at various positions, they all meet the government requirement.

SAR compliance for body-worn operation is based on a separation distance of 10 mm between the unit and the human body. Carry this device, at least 10 mm away from your body to ensure RF exposure level compliant or lower to the reported level. To support body-worn operation, choose the belt clips or holsters, which do not contain metallic components, to maintain a separation of 10 mm between this and your body.

RF exposure compliance with any body-worn accessory, which contains metal, was not tested and certified, and use such body-worn accessory should be avoided.

## Troubleshooting

Problem	Suggested Solution
Can not establish the USB connection between your device and PC.	<ul style="list-style-type: none"> <li>● You need to install the software. Run the installation program in path of <b>My Computer &gt; ZTEMODEM</b>.</li> <li>● If the driver of your device is abnormal, please reinstall the software. You need to uninstall the software first.</li> </ul>
Can not establish the Wi-Fi connection between your device and client.	<ul style="list-style-type: none"> <li>● Make sure the Wi-Fi function is active.</li> <li>● Refresh network list and select the correct SSID.</li> <li>● Check the IP address to make sure your client can obtain an IP address automatically in the Internet protocol (TCP/IP) properties.</li> <li>● Type the correct network key (Wi-Fi password) when you connect to the device.</li> </ul>
The client connected to the device can not access the Internet.	<ul style="list-style-type: none"> <li>● Make sure your (U)SIM card is available.</li> <li>● Change the location to find a place with good signal.</li> <li>● Check WAN Connection mode setting.</li> <li>● Contact with your service provider and confirm your APN settings.</li> </ul>
When I use AP Station mode, the client cannot access the Internet.	<ul style="list-style-type: none"> <li>● Make sure the other WLAN device has already connected to the Internet.</li> <li>● Make sure that the subnet of your device and the other WLAN device is different</li> </ul>

Can not visit the webGUI configuration page.	<ul style="list-style-type: none"><li>● Enter the correct address. The default address is <a href="http://192.168.0.1">http://192.168.0.1</a> or <a href="http://m.home">http://m.home</a>.</li><li>● Only use one network adapter in your PC.</li><li>● Do not use any proxy server.</li></ul>
About the password	<ul style="list-style-type: none"><li>● For the Wi-Fi connection password, please check the label on the device.</li><li>● The default password of the webGUI configuration page is <b>admin</b>.</li><li>● If you changed the password and forgot the new password, you need to restore the device to the factory default settings.</li></ul>

For more assistance, please:

- Send E-mail to **mobile@zte.com.cn**
- Visit **<http://www.zte.com.cn>**
- Call Service Hotline: **+86-755-26779999**

**C € 0700**