



**Quickstart Guide**  
**Vodafone Mobile Wi-Fi**  
**R209-Zr**

# Welcome

to the world of mobile communications

- 1 Welcome
- 2 Device overview
- 3 Getting started
- 5 Mobile Wi-Fi Web app
- 6 Web app overview
- 7 Current network panel
- 8 Mobile Wi-Fi Monitor app
- 9 Hints and tips
- 10 Glossary



## Welcome

Your Vodafone Mobile Wi-Fi creates a personal portable Wi-Fi network. Use it to share your secure mobile broadband internet connection with other Wi-Fi-enabled devices, such as computers, Apple® iPhone, iPad or iPod touch, Android smartphones and tablets like the Samsung® Galaxy Tab, or mobile gaming devices like Nintendo® DSi.

You can use battery, mains or USB to power your Vodafone Mobile Wi-Fi. This flexibility makes it easy to position your Vodafone Mobile Wi-Fi to get the best mobile coverage.

## Licenses

Your Vodafone Mobile Wi-Fi uses open source programs licensed under the GNU GPL (Version 2.0), BSD (Version 3.0), OpenSSL, Zlib/libpng, LGPL and Apache License.

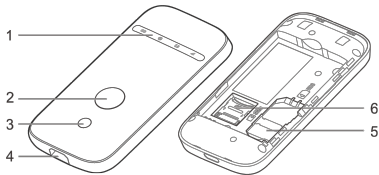
You can download the source code free of charge from: <http://vodafone.com/r209-zr> for a period of three years from the distribution of this product.

## Notice

**Copyright © ZTE 2014.  
All Rights Reserved**

Your Vodafone Mobile Wi-Fi is made exclusively for Vodafone by ZTE.  
No part of this guide may be reproduced or transmitted in any form or by any means without prior written consent of ZTE.

## Device overview



- 1 LED indicators
- 2 Power button
- 3 WPS button
- 4 Micro USB port
- 5 SIM slot
- 6 MicroSD card slot

### Mobile broadband signal



Amber - low



Green - excellent

### Battery charge



Green - OK



Green blinking - charging



Red blinking - low



Standby - not charging

### SMS text messages



Blue - unread SMS



Blue blinking - SMS Inbox full



No SMS

## Getting started

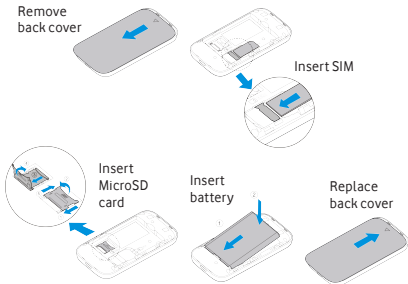
### Tip:

Charge your Mobile Wi-Fi fully (mains: 3.5 hours) before using it in battery mode.

\*Please only use the charger supplied with this device.

### Step 1

Insert your SIM, battery and optionally a MicroSD card.



### Step 2

Plug your Vodafone Mobile Wi-Fi into the mains\* or your computer to charge it while you are using it.

## Getting started

### Step 3

Press and hold the power button for 3 seconds to switch on your Vodafone Mobile Wi-Fi. It will begin connecting to the mobile broadband network.

### Step 4

You may need to enter your PIN to unlock your SIM.

Also, when your Vodafone Mobile Wi-Fi connects to the mobile network for the first time, you may be asked to activate your SIM. Activation is not always necessary, so you may not see this.

### Step 5

On your computer or device, select your Vodafone Mobile Wi-Fi network's name (its 'SSID') from the list of available networks, click Connect and enter the secure Wi-Fi network key (the 'WPA2 password'). The name and key are inside the back cover of your Vodafone Mobile Wi-Fi and also on a printed reminder card.

**Congratulations** - you are connected to the internet via Vodafone Mobile Wi-Fi.

## Mobile Wi-Fi Web app

### Tip:

Save the addresses for your Mobile Wi-Fi as favourites in your web browser.

To check the status of your mobile broadband and Wi-Fi networks, manage SMS text messages or change the settings of your Mobile Wi-Fi, you can use the Vodafone Mobile Wi-Fi Web app:

- Connect to your Vodafone Mobile Wi-Fi via Wi-Fi or with a USB cable
- If you installed your Vodafone Mobile Wi-Fi via USB, double-click the Vodafone Mobile Wi-Fi icon that was created on your desktop
- Alternatively - and particularly if you did not install via USB - open <http://VodafoneMobile.wifi> or <http://192.168.0.1> in your web browser.

To use the Vodafone Mobile Wi-Fi Web app via a USB cable or via Wi-Fi, you need:

- A computer with at least Windows XP<sup>®</sup> SP3, or
- An Apple Mac with at least OS X<sup>®</sup> 10.6 Snow Leopard.

You can also manage your Vodafone Mobile Wi-Fi via its Wi-Fi network, but not via a USB cable, using:

- Linux or Windows<sup>®</sup> 8 RT, or
- iPhone, iPad, iPod touch, or any other smartphone or tablet.

## Web app overview

- 1 Navigation tabs: Select Mobile Wi-Fi, Storage, SMS or Account view
- 2 Navigation bar: Select an area within each view
- 3 Current network panel: Status of mobile broadband network, Wi-Fi network, battery and connected devices
- 4 Content area: Content for current area
- 5 Context help: Help for current area
- 6 Language selection: Defaults to browser language
- 7 Login/Logout: For advanced settings. The default password is 'admin'.

The screenshot displays the Vodafone Mobile Wi-Fi web application interface. At the top, a navigation bar (1) contains tabs for 'Mobile Wi-Fi', 'Storage', 'SMS', and 'Account'. Below this is a red navigation bar (2) with 'Mobile Broadband' and 'Help' options. The main content area (4) is divided into several sections: a welcome message, an inbox, and a help section (5) with a 'Vodafone Mobile Wi-Fi help' title. On the right side, a 'Name network' panel (3) shows network status, including signal strength, connection status, network name, time connected, and total volume. Below this are expandable sections for 'Battery Status (80%)', 'Wi-Fi Status', and 'Connected devices (1)'. At the top right, there are links for 'Choose language', 'Password', 'Enter Password', and 'Login' (7).



## Current network panel

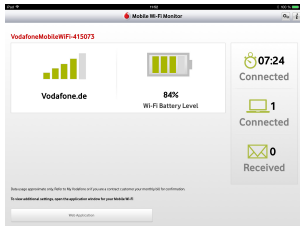
The Current network panel appears on the right-hand side of every view in the Mobile Wi-Fi Web app, giving you a quick summary of the status of your Mobile Wi-Fi. Below it are additional panels for battery, Wi-Fi and the status of other devices sharing your Wi-Fi network.

The screenshot displays a vertical stack of four panels in the Mobile Wi-Fi Web app. The top panel, titled "Roaming network", shows mobile network details: Mobile number, Signal strength (represented by four green bars), Status (Connected with a green checkmark), Network (vodafone UK HSUPA), Time connected (00:11:05 with a clock icon), Total volume (3.06MB), and data rates for Up (0b/s) and Down (0b/s). Below this are three expandable panels: "Battery Status (90%)", "Wi-Fi Status", and "Connected devices (1)". Each of these lower panels has a plus sign on the right side, indicating they can be expanded.

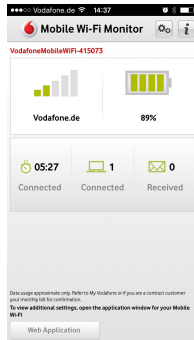
## Mobile Wi-Fi Monitor app

If you have an Apple iOS® or Android device, you can also check the status of your Mobile Wi-Fi using the Vodafone Mobile Wi-Fi Monitor app. Download the app from the iTunes or Google Play app stores.

iPad / tablet



iPhone / smartphone



## Hints and tips

### Wi-Fi security

Please ensure that the Wi-Fi security settings meet your personal requirements. To change the admin password, open the Vodafone Mobile Wi-Fi Web app:

- Enter 'admin' into the Password field and click 'Login'
- Select Router on the Navigation bar
- Select 'Router Settings' from the left-hand Menu bar.

To change your Wi-Fi network name (SSID) and the key:

- Select Wi-Fi on the Navigation bar
- Select 'Security' from the left-hand Menu bar.

### Wireless Protected Setup (WPS)

Pressing and holding the WPS button on your Vodafone Mobile Wi-Fi for 5 seconds will switch WPS on (all 3 LEDs flash simultaneously). You can then connect any WPS-enabled device without having to enter the network key.

### Further Support

- Select Help on the Navigation bar in the Vodafone Mobile Wi-Fi Web app
- Select 'Support' from the left-hand Menu.

The Content area will show how to contact your mobile network operator.

For a full user guide including further hints and tips, visit:

<http://vodafone.com/r209-zr>

## Glossary

**Bearer** Communication method used for data transport over the mobile network, eg. 3G Broadband, HSPA, 3G, etc.

**Home network** The network of the mobile operator who provided your SIM.

**Roaming** You can use your mobile device on any other mobile network that has a roaming agreement with your operator, whether in your country or abroad.

**SIM** Your Subscriber Identity Module is the small plastic chip that you will have received together with your mobile contract. Your SIM has gold contacts on one side.

**WPA2** An alternative name for the Wi-Fi network key. On Macs with OS X this is called 'WPA2 personal'.

## Notes

This device complies with part 15 of the FCC Rules. Operation is subject to the following two conditions: (1) This device may not cause harmful interference, and (2) this device must accept any interference received, including interference that may cause undesired operation.

**Note:** This equipment has been tested and found to comply with the limits for a Class B digital device, pursuant to part 15 of the FCC Rules. These limits are designed to provide reasonable protection against harmful interference in a residential installation. This equipment generates uses and can radiate radio frequency energy and, if not installed and used in accordance with the instructions, may cause harmful interference to radio communications. However, there is no guarantee that interference will not occur in a particular installation. If this equipment does cause harmful interference to radio or television reception, which can be determined by turning the equipment off and on, the user is encouraged to try to correct the interference by one or more of the following measures:

- Reorient or relocate the receiving antenna.
- Increase the separation between the equipment and receiver.
- Connect the equipment into an outlet on a circuit different from that to which the receiver is connected.
- Consult the dealer or an experienced radio/TV technician for help.

Any Changes or modifications not expressly approved by the party responsible for compliance could void the user's authority to operate the equipment. The device has been evaluated to meet general RF exposure requirement. The device can be used in portable exposure condition without restriction.

### Body-Support Operation

This device was tested for typical body-Support operations. To comply with RF exposure requirements, a minimum separation distance of 1.0 cm must be maintained between the user's body and the device, including the antenna. Third-party belt-clips, holsters, and similar accessories used by this device should not contain any metallic components. Body-worn accessories that do not meet these requirements may not comply with RF exposure requirements and should be avoided. Use only the supplied or an approved antenna.



The term Mobile Broadband together with the 'birds' design is a trademark of GSMC Limited.



Mobile  
Broadband

C € 1588

© Vodafone 2014. Vodafone and the Vodafone logos are trade marks of the Vodafone Group. Any product or company names mentioned herein may be the trade marks of their respective owners.

R209-Zr Mobile Wi-Fi QSG 04/14\_en\_GB



**vodafone**