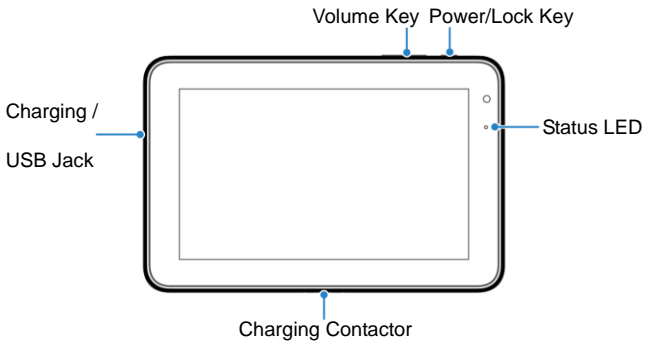


ZTE V72M

Quick User Guide

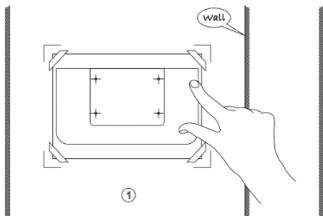
Getting to Know Your Tablet



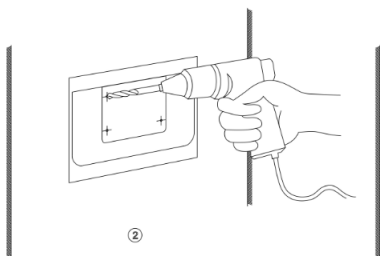
Tablet Setup

Wall mount and Sleeve installation guide (Optional)

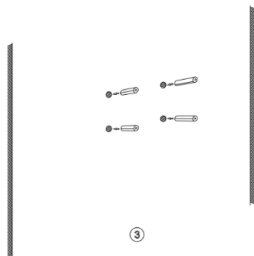
1. Paste the location drawing



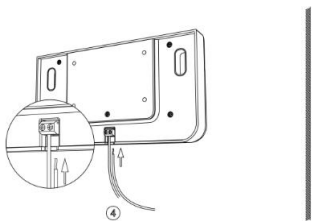
2. Hole on the wall



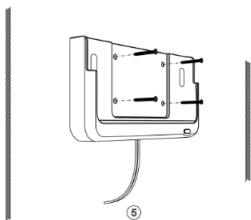
3. Remove the location drawing and install the plug



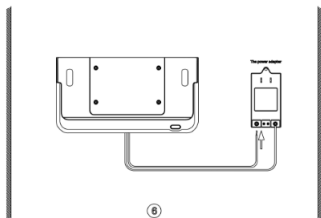
4. Install the cables in the charging base



5. Fix the charging base to the wall with crews



6. Connect the cables to the power adapter



Charging

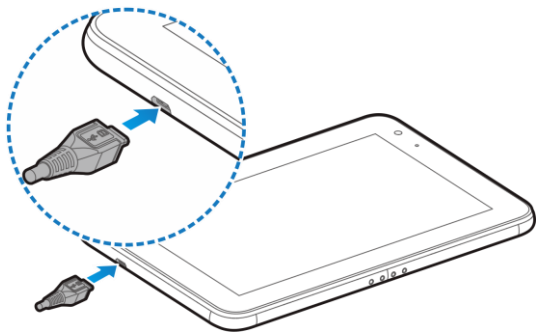
When you first get your new tablet you'll need to charge the battery.

If the battery is low, there will be a pop-up message on the screen.

As you charge your tablet, the screen will tell you the exact battery level each time you wake up your tablet.

WARNING! Use only ZTE-approved chargers and cables. The use of unapproved accessories could damage your tablet or cause the battery to explode.

1. Connect the adapter to the charging jack. Ensure that the adapter is inserted with the correct orientation. Do not force the connector into the charging jack.



2. Connect the charger to a standard AC wall outlet.
3. Disconnect the charger when the battery is fully charged.

Powering On/Off

- Press and hold the **Power Key** to turn on your tablet.
- To turn it off, press and hold the **Power Key** to open the options menu.
- Touch **Power off** > **OK**.

Touch Screen

- Use your fingertip to lightly touch the screen.
- Use quick flicks of your finger on the touch screen to swipe up, down, left, and right.

Wifi

You must be connected to the Digital Life Controller via Wi-Fi network.

1. Select your home Wi-Fi network and input the Wi-Fi password.
2. Input Digital Lifg User ID and password to login in AT&T Digital Life.

You can tap  > **Wi-Fi Network** to select another home network.

For Your Safety

1. Health and safety information

Product Handling

General Statement on Handling and Use

You alone are responsible for how you use your tablet and any consequences of its use.

You must always turn off your tablet wherever the use of a tablet is prohibited. Use of your tablet is subject to safety measures designed to protect users and their environment.

Always treat your tablet and its accessories with care and keep it in a clean and dust-free place.

Clean the device and its accessories with a soft material such as cleaning cloth for eyeglass lenses. Do not use alcohol or other

corrosive substances for cleaning or allow them to get inside.

Do not expose your tablet or its accessories to open flames or lit tobacco products.

Do not expose your tablet or its accessories to liquid, moisture or high humidity.

Do not drop, throw or try to bend your tablet or its accessories.

Do not paint your tablet or its accessories.

Do not attempt to disassemble your tablet or its accessories. Only authorized personnel can do so.

Do not expose or use your tablet or its accessories in a environment with or that can reach extreme temperatures, minimum - [5] and maximum + [50] degrees Celsius.

Do not place your tablet inside or near heating equipments or high pressure containers, such as water heaters, microwave ovens, or

hot cooking utensils. Otherwise, your tablet may be damaged.

Please check local regulations for disposal of electronic products.

Do not carry your tablet in your back pocket as it could break when you sit down.

Small Children

Do not leave your tablet and its accessories within the reach of small children or allow them to play with it.

They could hurt themselves or others, or could accidentally damage the tablet.

Your tablet contains small parts with sharp edges that may cause an injury or may become detached and create a choking hazard.

Demagnetization

To avoid the risk of demagnetization, do not allow electronic devices or magnetic media to be close to your tablet for a long

time.

Air Bags

Do not place a tablet in the area over an air bag or in the air bag deployment area as an airbag inflates with great force and serious injury could result.

Store the tablet safely before driving your vehicle.

Seizures/Blackouts

The tablet can produce a bright or flashing light. A small percentage of people may be susceptible to blackouts or seizures (even if they have never had one before) when exposed to flashing lights or light patterns. If you have experienced seizures or blackouts or have a family history of such occurrences, please consult a physician.

Repetitive Strain Injuries

To minimize the risk of Repetitive Strain Injury (RSI) when texting

with your tablet:

Do not grip the tablet too tightly.

Press the buttons lightly.

Use the special features which are designed to minimize the times of pressing buttons, such as Message Templates and Predictive Text.

Take many breaks to stretch and relax.

Tablet Heating

Your tablet may become warm during charging and during normal use.

Distraction

Driving

Full attention must be given to driving at all times in order to reduce

the risk of an accident. Using a tablet while driving (even with a hands free kit) can cause distraction and lead to an accident. You must comply with local laws and regulations restricting the use of wireless devices while driving.

Operating Machinery

Full attention must be given to operating machinery in order to reduce the risk of an accident.

Electrical Safety

Accessories

Use only approved accessories.

Do not connect with incompatible products or accessories.

Take care not to touch or allow metal objects, such as coins or key rings, to contact or short-circuit in the battery terminals.

Never puncture the surface of the battery with sharp objects.

Connection to a Car

Seek professional advice when connecting a tablet interface to the vehicle electrical system.

Faulty and Damaged Products

Do not attempt to disassemble the tablet or its accessories.

Only qualified personnel can service or repair the tablet or its accessories.

If your tablet (or its accessories) has been submerged in water, punctured, or subjected to a severe fall, do not use it until you have taken it to be checked at an authorized service center.

Radio Frequency Interference

General Statement on Interference

Care must be taken when using the tablet in close proximity to personal medical devices, such as pacemakers and hearing aids.

Pacemakers

Pacemaker manufacturers recommend that a minimum separation of 15 cm be maintained between a mobile tablet and a pacemaker to avoid potential interference with the pacemaker. To achieve this, use the tablet on the opposite ear to your pacemaker and do not carry it in a breast pocket.

Hearing Aids

People with hearing aids or other cochlear implants may experience interfering noises when using wireless devices or when one is nearby.

The level of interference will depend on the type of hearing device and the distance from the interference source. Increasing the separation between them may reduce the interference. You may also consult your hearing aid manufacturer to discuss alternatives.

Medical Devices

Please consult your doctor and the device manufacturer to determine if operation of your tablet may interfere with the operation of your medical device.

Hospitals

Turn off your wireless device when requested to do so in hospitals, clinics or health care facilities. These requests are designed to prevent possible interference with sensitive medical equipment.

Aircraft

Turn off your wireless device whenever you are instructed to do so by airport or airline staff.

Consult the airline staff about the use of wireless devices onboard the aircraft. If your device offers a 'flight mode', this must be enabled prior to boarding an aircraft.

Interference in Cars

Please note that because of possible interference with electronic equipment, some vehicle manufacturers forbid the use of the tablet in their vehicles unless a hands-free kit with an external antenna is included in the installation.

Explosive Environments

Gas Stations and Explosive Atmospheres

In locations with potentially explosive atmospheres, obey all posted signs to turn off wireless devices such as your tablet or other radio equipment.

Areas with potentially explosive atmospheres include fueling areas, below decks on boats, fuel or chemical transfer or storage facilities, and areas where the air contains chemicals or particles, such as grain, dust, or metal powders.

Blasting Caps and Areas

Power off your tablet or wireless device when in a blasting area or in areas posted power off “two-way radios” or “electronic devices” to avoid interfering with blasting operations.

2. FCC Regulations

This device complies with part 15 of the FCC Rules. Operation is subject to the following two conditions: (1) This device may not cause harmful interference, and (2) this device must accept any interference received, including interference that may cause undesired operation.

Caution: Changes or modifications not expressly approved by the manufacturer could void the user’s authority to operate the equipment.

NOTE: This equipment has been tested and found to comply with the limits for a Class B digital device, pursuant to part 15 of the

FCC Rules. These limits are designed to provide reasonable protection against harmful interference in a residential installation. This equipment generates, uses and can radiate radio frequency energy and, if not installed and used in accordance with the instructions, may cause harmful interference to radio communications. However, there is no guarantee that interference will not occur in a particular installation. If this equipment does cause harmful interference to radio or television reception, which can be determined by turning the equipment off and on, the user is encouraged to try to correct the interference by one or more of the following measures:

- Reorient or relocate the receiving antenna.
- Increase the separation between the equipment and receiver.
- Connect the equipment into an outlet on a circuit different from that to which the receiver is connected.

—Consult the dealer or an experienced radio/TV technician for help.

FCC RF Exposure Information (SAR)

This device is designed and manufactured not to exceed the emission limits for exposure to radio frequency (RF) energy set by the Federal Communications Commission of the United States.

During SAR testing, this device is set to transmit at its highest certified power level in all tested frequency bands, and placed in positions that simulate RF exposure near the body with the separation of 0 mm. Although the SAR is determined at the highest certified power level, the actual SAR level of the while operating can be well below the maximum value. This is because the device is designed to operate at multiple power levels so as to use only the power required to reach the network. In general, the closer you are to a wireless base station antenna, the lower the power

output.

The exposure standard for wireless employs a unit of measurement known as the Specific Absorption Rate, or SAR. The SAR limit set by the FCC is 1.6W/kg.

Tests for SAR are conducted using standard operating positions accepted by the FCC with the device transmitting at its highest certified power level in all tested frequency bands.

The FCC has granted an Equipment Authorization for this model device with all reported SAR levels evaluated as in compliance with the FCC RF exposure guidelines. SAR information on this model device is on file with the FCC and can be found under the Display Grant section of www.fcc.gov/oet/ea/fccid after searching on FCC ID: SRQ-V72M.

For this device, the highest reported SAR value for near the body is 1.46 W/kg.

While there may be differences between the SAR levels of various devices and at various positions, they all meet the government requirement.

SAR compliance for body operation is based on a separation distance of 0 mm between the unit and the human body. Carry this device, at least 0 mm away from your body to ensure RF exposure level compliant or lower to the reported level. To support body operation, choose the belt clips or holsters, which do not contain metallic components, to maintain a separation of 0 mm between this and your body.

CTIA Requirements

- a) Do not disassemble or open crush, bend or deform, puncture or shred.
- b) Do not modify or remanufacture, attempt to insert foreign objects into the battery, immerse or expose to water or other liquids,

expose to fire, explosion or other hazard.

c) Only use the battery for the system for which it is specified

d) Only use the battery with a charging system that has been qualified with the system per CTIA Certification Requirements for Battery System Compliance to IEEE 1725. Use of an unqualified battery or charger may present a risk of fire, explosion, leakage, or other hazard.

e) Do not short circuit a battery or allow metallic conductive objects to contact battery terminals.

f) Replace the battery only with another battery that has been qualified with the system per this standard, IEEE-Std-1725. Use of an unqualified battery may present a risk of fire, explosion, leakage or other hazard.

g) Promptly dispose of used batteries in accordance with local regulations

h) Battery usage by children should be supervised.

j) Avoid dropping the tablet or battery. If the tablet or battery is dropped, especially on a hard surface, and the user suspects damage, take it to a service center for inspection.

k) Improper battery use may result in a fire, explosion or other hazard.

For those host devices that utilize a USB port as a charging source, the host device's user manual shall include a statement that the tablet shall only be connected to CTIA certified adapters, products that bear the USB-IF logo or products that have completed the USB-IF compliance program.