

**Quick Start Guide
Vodafone Mobile Connect
USB Stick**





Welcome

to the world of mobile communications

- 1 Welcome
- 2 Set up your USB Stick
- 3 Start the software
- 4 Software overview
- 5 Connect
- 6 SMS text messaging
- 7 SMS contacts
- 9 USB Stick LED light
- 9 Signal strength
- 10 Hints and tips
- 12 Glossary

Welcome

Your new **Vodafone Mobile Connect USB Stick** lets you connect your computer to the internet over the Vodafone high-speed mobile phone network.

Browse the web

You can now access the **web** and any other internet service wherever there's a mobile phone network .

Pick up emails

Keep up to date with your **emails**, wherever you are. You can also access your personal email accounts – even web-based accounts like Hotmail.

Send and receive SMS text messages*

You can send and receive **SMS text messages** straight from your computer. Vodafone SMS provides an easy way to view messages, write new ones, and manage contact details.

System Requirements

To use this USB Stick and the Vodafone Mobile Connect software, you need:

- A computer running Microsoft® Windows Vista™, Windows® XP SP2 or Windows® 2000 SP4, or an Apple Mac running Mac OS® X 10.3.9 or above
- At least 100 MB free disk space and 256 MB RAM memory
- A USB 2.0 socket
- Administrator rights on your computer.

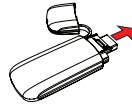
* SMS is currently only supported on computers running Microsoft Windows.

Set up your USB Stick

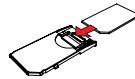
Your SIM (Subscriber Identity Module) is the small, postage-stamp-sized chip that you received together with your mobile subscriber contract.

In areas of low network coverage we recommend you use the USB extension cable to improve your reception.

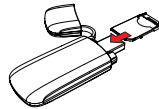
- Remove the cap from the end of the USB Stick.



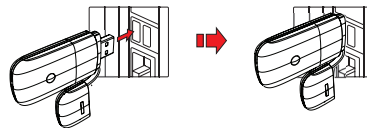
- Pull out the SIM holder from its slot, and insert your SIM as shown.



- Re-insert the SIM holder into the USB Stick.



- Plug the USB Stick firmly into your computer's USB port.



Start the software



On Microsoft Windows computers

The software setup should start automatically, and proceed to set up your USB Stick. If for some reason the setup does not start, double-click the file called **setup_vmc_lite.exe** on the USB Stick. Follow the on-screen instructions.

Setting up your USB Stick may take a few minutes, but once the setup is finished, the Vodafone Mobile Connect Lite software should start automatically. If for some reason the program does not start, select **Vodafone Mobile Connect** from the Windows Start menu.

On Mac OS X computers

The first time you plug in your USB Stick, it will show up on your desktop like a standard USB memory stick. Insert the Vodafone Mobile Connect Mac software CD into the CD drive, double-click the file called **Vodafone MC Installer**, and follow the on-screen instructions.

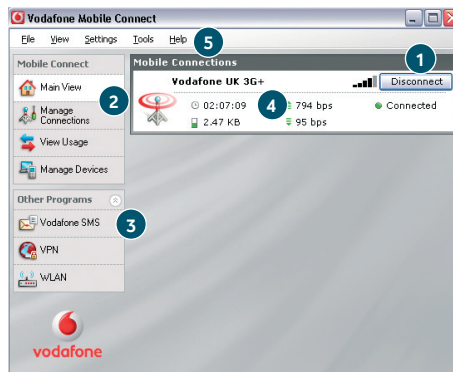
Once your Mac has restarted, the USB Stick will no longer appear, but you will see the Vodafone Mobile Connect software in your Applications folder. Double-click the program to set up a mobile connection.

Software overview



The first time you run the software, your USB Stick will usually be set as the default device. If it is not, click 'Manage Devices' and select your USB Stick there.

- 1 Connect/Disconnect**
Connect via the mobile phone network
- 2 Views**
View data usage, and additional software settings
- 3 Start SMS program**
Send, receive and manage SMS messages and contacts
- 4 Status**
Check the status of your connection
- 5 Help**
Help Topics, plus internet and hotline support.



4

Connect



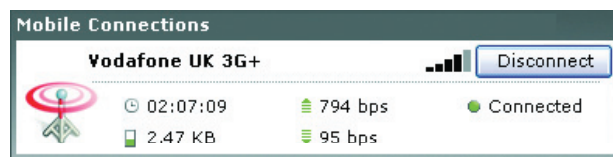
If a mobile network has been found, the **Connect** button in the **Mobile Connections** panel will be enabled. Clicking **Connect** connects to the internet across the mobile phone network. Now you can browse the web or use email.

When connected, the **Connect** button text changes to **Disconnect** and a green 'Connected' indicator appears below the button.

The radio waves on the Mobile Connections icon are animated whenever data is being transferred over the connection.

No radio waves are shown when nothing is being transferred.

The radio waves are shown static when no connection is open.



Clicking the **Disconnect** button will close the connection – and the text on the button will revert to **Connect**.

To open a mobile connection, you need to be within coverage of a mobile network. As a rule, anywhere you can make a call on your mobile phone, you should be able connect.

SMS Text Messaging

Click **Vodafone SMS** on the navigation bar in the main window of the Vodafone Mobile Connect Lite software to open the SMS program.

To send an SMS

Click **New** at the left-hand end of the SMS toolbar to create a new SMS text message.

1 Address

Enter the recipients here, or choose them from Contacts

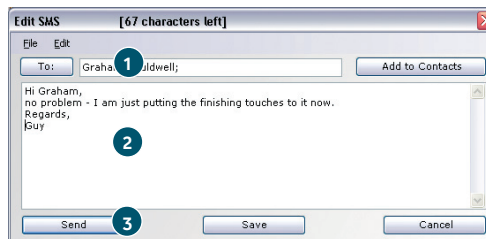
2 Message

Write your message here

3 Send

Click on the **Send** button to send your message.

The number displayed to the person who receives your message will be from your data SIM, not your mobile phone. Use a short 'signature' to make sure people know you sent them a message: Settings/Messages/Signature.

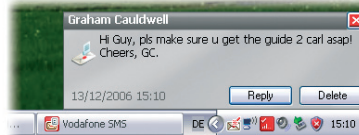


After your SMS has been sent, it will be stored in the **Sent** list.



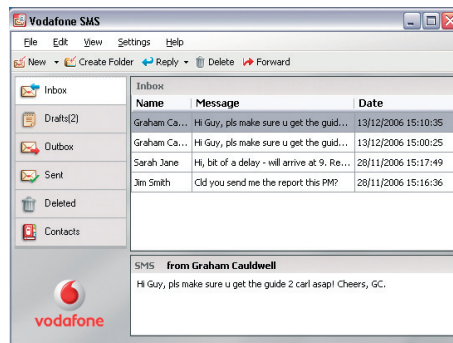
Receiving SMS

When you receive a new message, an **SMS Notification** is shown briefly so you can respond to it directly.



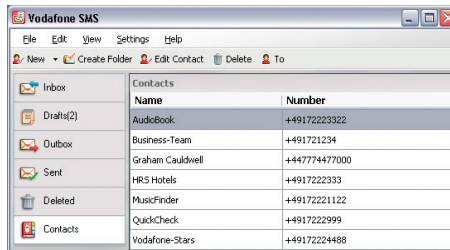
The received message can also be read from the **Inbox** in the main Vodafone SMS window.

The Vodafone SMS software will receive text messages whenever you have mobile network coverage.



SMS Contacts

Click **Contacts** on the SMS navigation bar to open the Contacts list, in which you can save SMS numbers that you use frequently as contacts with names.



New SMS Contact

Clicking the **New** button on the SMS toolbar opens a new contact window.

Enter the name and number of your contact using the international format for the number, eg. +447774477000.



The 'Create New Contact' dialog box has two input fields. The 'Name' field contains 'John Smith' and the 'Number' field contains '+44 7717'. There are 'OK' and 'Cancel' buttons at the bottom.



USB Stick LED light

The LED light on your USB Stick shows which kind of mobile network has been found, and whether the USB Stick is connected to that network.

- Green blinking**
Searching for a GPRS/EDGE network
- Green solid**
A GPRS/EDGE network has been found – you could connect
- Green solid**
Connected via GPRS/EDGE



Signal strength



The strength of the mobile network signal is shown by the symbol to the left of the Connect button, and by the icon in the Windows Notification area.

The more bars that are filled in, the better the mobile network signal quality. At least one bar must be filled in order to connect.



Hints and tips

If you don't see your USB Stick in the list of devices

- Remove the USB Stick
- Re-start your computer
- Re-insert the USB Stick.

If no network can be found

- Change your physical location: in a building, move closer to a window, move higher up, or go outside
- (Windows) Select 'View/View Available Mobile Connections' and see if you can connect to a particular network in the list shown
- Contact Support, and check that data services and roaming are enabled on your account.

If no connection can be opened

- Wait a few minutes and try to connect again. This is most often a temporary problem, especially if an 'Error 631' or 'Error 619' is referenced
- Select 'File/Exit' to exit the Vodafone Mobile Connect Lite software completely, and then re-start it again
- Re-start your computer
- (Windows) Click 'Manage Devices', select your device, click edit and then select a different network preference on the Network Preference tab page, eg. '3G Only'
- (Mac) Start the Vodafone Mobile Connect software, and select one of the other options in the lower part of the main window.
- If you are using a VPN (Virtual Private Network), contact your company IT administrator.

For further help, please visit www.support.vodafone.com, or call Vodafone Support on XXX or XXXXXX.

If you have problems when roaming

- (Windows) Select 'View/Available Mobile Connections' and try opening one of the connections shown
- Contact Support, and check roaming is enabled for your account
- Check the name of the current network in the Mobile Connections panel. If it is not Vodafone or a Partner, select a different network from 'View/Available Mobile Connections'.

Check software update preferences

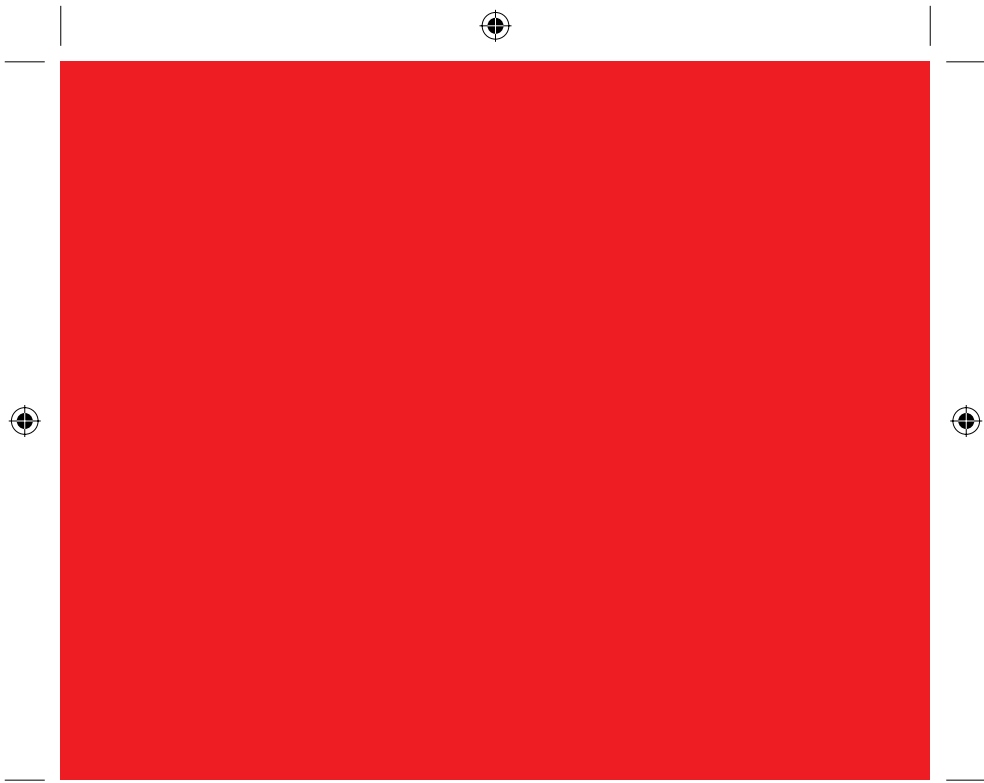
- Set your operating system and other programs to notify you of software updates instead of downloading them automatically – otherwise they may slow down your mobile connection, or exceed your data usage limit.

Usage indication

- The usage window only displays an indication of your data usage. Please refer to your invoice for the actual amount of data transferred.

Glossary

Built-in data card	Mobile data card built into notebook computer. Enables data connections over the mobile phone network.
Data card/ USB stick	A device for a computer that is used to open a data connection over the mobile phone network.
EDGE	An enhancement to GPRS networks offering higher speeds.
EV-DO	A high-speed mobile data standard used mostly in the USA. Frequent travellers to the USA should contact their mobile network operator about using special Vodafone Mobile Connect data cards and software in the USA.
GPRS	Standard for transferring data over mobile phone (GSM) networks. It generally provides wide coverage and moderate data speeds. (General Packet Radio System).
GSM	A standard for mobile telecommunications (Global System for Mobile communications), supported by over 680 operators in 210 countries and territories.
Roaming	Connecting via networks other than your own operator's network. This typically occurs when you are abroad, but is also possible in your own country.
SIM	The 'Subscriber Identity Module' is the small, postage-stamp-sized chip that you will have received together with your mobile subscriber contract. The SIM has gold contacts on one side.



© Vodafone 2008. Vodafone and the Vodafone logos are trade marks of the Vodafone Group. Any product or company names mentioned herein may be the trade marks of their respective owners.

Product Code:
K2525 VMCLite 9.3 07/08_en_GB