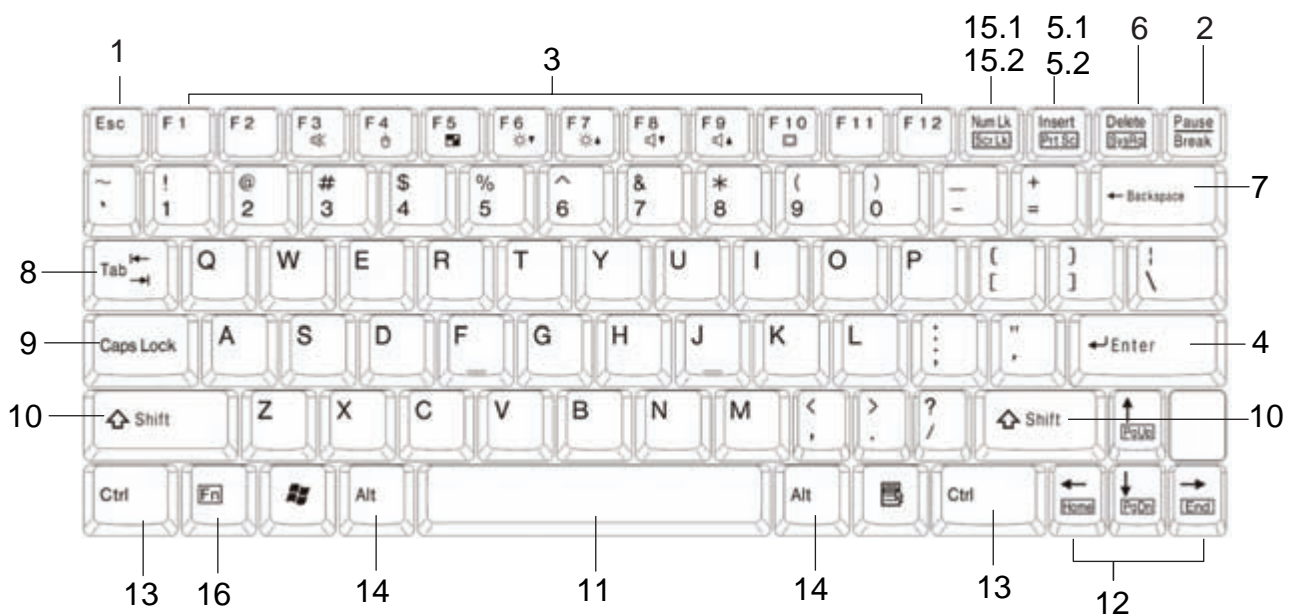


Function of Keys



■ Sending the Command to Discontinue or Interrupt the Operation

1 ESC (Escape)

Equivalent to clicking the Cancel button.

2 Pause/Break

Pressing it to stop the execution of the current program or transmission.

■ Programmed to Perform Certain Actions

3 Function Keys

The function keys perform different functions in different applications and programs. In combination with other keys these function keys perform different functions.

■ Sending Command (Order)

4 Enter

Creates a new Paragraph or what is referred to as a Hard Return. In any dialog box a selected button or command can be selected by depressing this key.

■ Taking the Hard Copy of the Screen

5.1 PRT SC (Print Screen)

Pressing the Print Screen key causes the computer to send whatever images and text are currently on the display screen to the printer. Some graphics programs and Windows, use the Print Screen key to obtain Screen Captures.

■ Compiling Text

5.2 Insert

Allows text to be inserted. When insert is enabled, the text inserted in a document will not overwrite any other text. However, when disabled, text will be overwritten.

6 Delete

While working with text, use this key to delete characters to the right of the insertion point. This key can also be used to delete selected files.

7 Backspace

While working with text, use this key to delete characters to the left of the insertion point.

8 Tab

This key can be used to move forward through options in a dialog box. **Ctrl+Shift+Tab** can be used to move backward through the options. **Ctrl + Tab** allows movement from one open window to the next in an application with more than one open window.

■ Combining to Input Text

9 Caps Lock

Pressing it will set a keyboard mode in which typed letters are capitalized by default and in lower case when the Shift key is pressed; the keyboard remains in this mode until Caps Lock is pressed again.

10 Shift

Giving the other keys an alternate meaning. When combined with alphabetic keys, the Shift key causes the system to output a capital letter. The Shift key can also be combined with other keys to produce program-dependent results.

11 Space

To enter the space between words during typing.

■ Cursor Movement

12 Cursor Keys

The keys that move the pointer, or cursor, on screen. They include the up, down, left and right arrow, home, end, PgUp and PgDn keys.

■ Combining the Other Key to Execute Function

13 Ctrl (Control)

Ctrl is a key commonly used to refer to a keyboard shortcut key such as:

Ctrl+Alt+Del

14 Alt (Alternate)

Alt is a key generally located by the space bar on keyboards. This term may be used to describe a key combination such as:

Ctrl+Alt+Del

The above combination means press and hold on the keyboard CTRL and ALT and DEL to perform the function, in this case reboot the computer or open the close program window / task manager window.


15.1 Num Lk (Number Lock)

Turning the Num Lock on will allow you to use the numbers on the keypad.

15.2 Scr Lk (Scroll Lock)

The scroll lock key is intended to temporarily stop the scrolling of text or halt the operation of a program.

16 Fn (Function)

The commands can only be accessed by first pressing and holding the Fn key while pressing a key with a icon. ( Page 24)

Adjusting Volume

▼ About the Built-in Speaker

The stereo speaker is built in to the product. Three types of sound sources can be output from the speaker. You can do the adjustment with "Volume Control" of Windows.

PC Speaker	The notebook built-in sound, normally hear "beep" sound from the notebook.
Digital Sound Function	The sound playback from the sound circuit using 16bit D/A converter and the sound output from FM synthesis.
Microphone Input	The sound is from the microphone connected to the microphone jack or the built-in microphone.

▼ Adjusting Speaker Volume

Adjust the volume of the speaker/headphone as follows.

■ Using Keyboard to Adjust Volume

Volume can be adjusted from the function key of the keyboard.

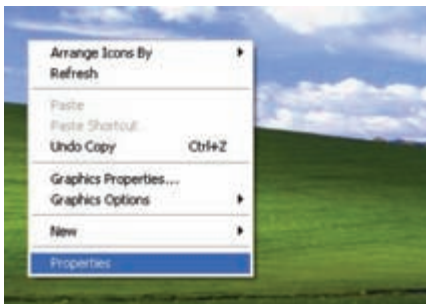
First pressing and holding the **[Fn]** key, then pressing **[F8]** and **[F9]** key to decrease and increase the volume.

Adjusting LCD Resolution

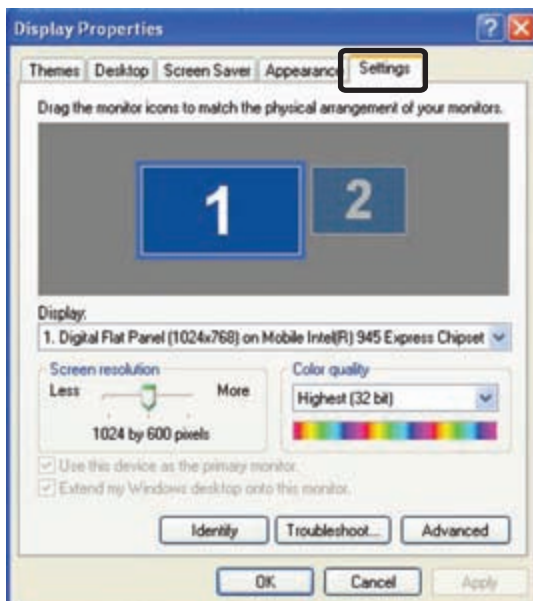
Changing Screen Resolution and Color Quality

You can adjust screen resolution and color quality in "Display Properties".

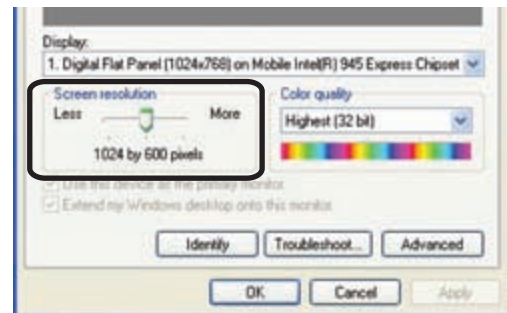
1 Right Click on the desktop, select [Properties] from the menu.



2 Select [Setting] tag.



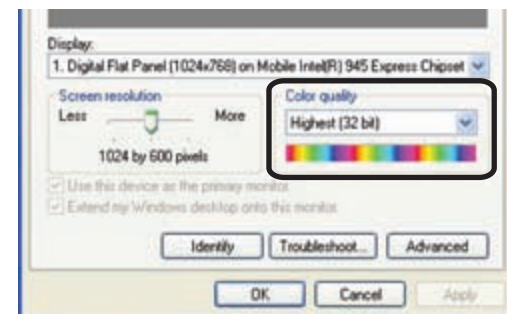
3 Slide the bar left and right, selects the resolution of the screen.



Tip

- The default screen resolution of the notebook is 1024 x 600.

4 Click the selection box to select the Color quality.

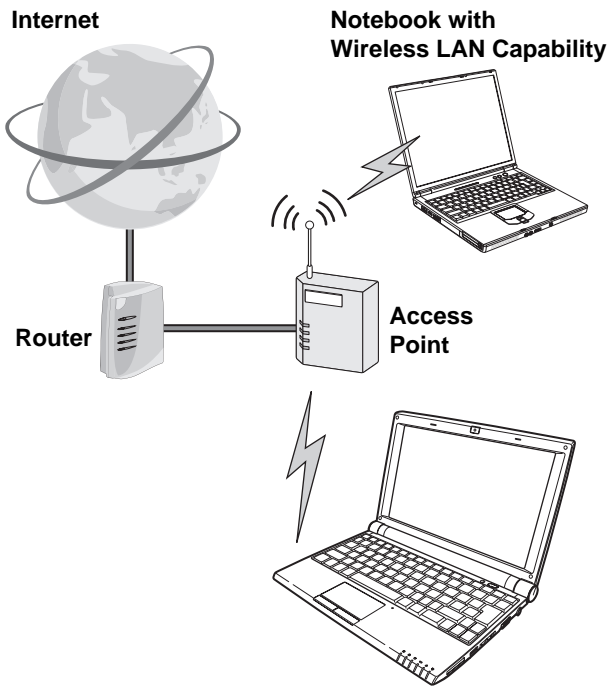


5 Click [Apply].

6 Click [OK].

Using Wireless LAN

▼ What Is Wireless LAN?



■ Data Communication by Radio Wave

Wireless means using radio frequency signal to do data exchange without LAN cable.

■ Internet Connection Capability

Combined with router and access point, the notebook can access internet without any LAN cable.



Notice

- WLAN function built in the notebook follow IEEE 802.11b, IEEE 802.11g and Bluetooth standard.
- Please turn off wireless LAN function when the noise with electrical interference effect is produced.
- Please do not use wireless LAN in the area where the radio device is prohibited.

▼ Security Notice

If the security setting is not done, it is possible to occur problem when you exchange information with wireless LAN.

● Communication contents can be peeped

It is possible for the third party with malice to intercept radio wave intentionally. The following kind of communication contents can be peeped.

- Private information such as ID, password or credit card number etc.
- Mail contents

● Wireless LAN Invasion

It is possible for the third party with malice accessing the private/company network without permission and doing the following kind of behaviors:

- Retrieve private and confidential information (secret disclosure)
- Send a program that appears legitimate to the notebook, but performs some illicit activity when it is run.(Trojan)
- Rewrite the communication contents (alteration)
- Infect computer virus and destroy the system (destruction)

It is customer's responsibility to do the setting of network security. The customer has to sufficiently understand the result occurred without setting network security.

▼ Specification of Wireless LAN

The specification of Wireless LAN module.

※Transmission speed and communication range is changable. They depend upon radio wave environment, the connected equipment and the application applied.

※Transmission speed is the speed defined by standard (theoretical value), it differs from actual data rate.

Standard	IEEE802.11b/g Compliance (2.4GHz band)
Maximum Transmission Speed	54Mbps (IEEE802.11g) 11Mbps (IEEE802.11b)

※When the radar wave (weather radar and the like) is detected while doing the communication, for modifying the automatic channel operation, sometimes the communication is discontinued.

Connecting Wireless LAN

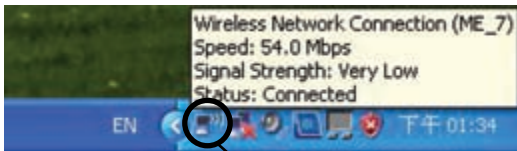
Set Up Automatic Wireless LAN Recognition

- 1 Press **[Fn] + [F2]** or wireless LAN switch to turn on wireless LAN function. When wireless LAN is enabled, the Wireless LAN LED lights. (Page 17)

Tip

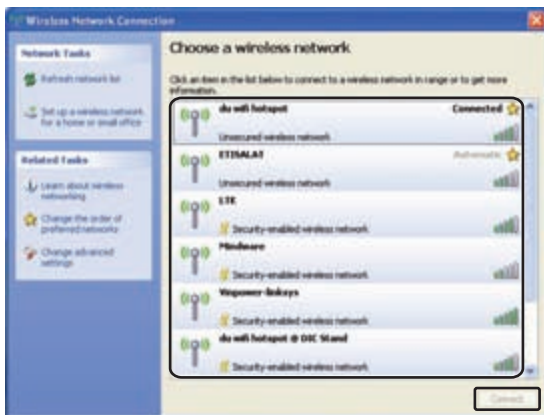
- The connection message will appear on task bar when the possible wireless LAN connection is detected.

- 2 Click the wireless network connection icon and the program of Wireless Network Connection will be launched.



Wireless Network Connection Icon

- 3 Select a wireless network from the list that appears, and then click **[Connect]** button. If the network you is security enabled, the program will ask you to type “Network key”.



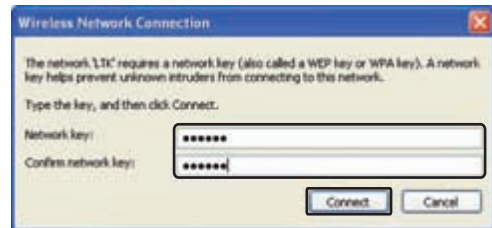
Tip

- Click **[Refresh network list]**, if there is no wireless network in the list.

- If the network is one that support “Wireless Provisioning Services”, you might be asked to download additional files that will allow your notebook to connect the network.

- If you connect to a unsecured wireless network, the warning message will appear. Directly click **[Connect]** to connect or click **[Cancel]** to quit the dialog box. After setting up the security, connecting the wireless LAN again.

- 4 Type **[Network key]** and **[Confirm network key]**, click **[Connect]** to connect wireless LAN.



Tip

- If the network key automatically provide by the network, the connection will be made automatically, and the program will not request you typing network key.

- Sometimes, setting up network is necessary.

Manually Set Up Wireless LAN

- 1 Apply the step 1 and 2 mentioned for “Set Up Automatic WLAN Recognition”.

- 2 Click **[Set up a wireless network for a home and small office]** on “Network Tasks”, and begin the setup.

