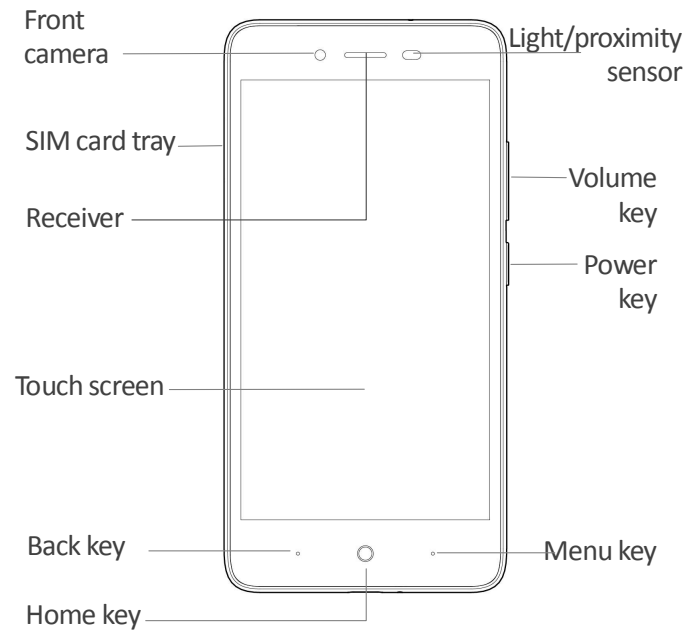


ZTE Z862VL

User Manual

Your phone at a glance

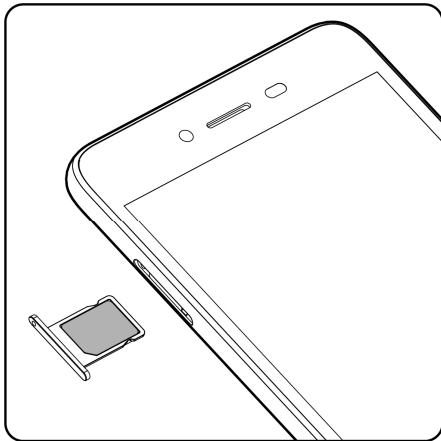


Inserting the SIM card

1. Insert the end of the eject tool into the hole of the card tray and press firmly until the tray pops out.
2. Put the nano-SIM card into the tray.
3. Push the card tray back into the phone.

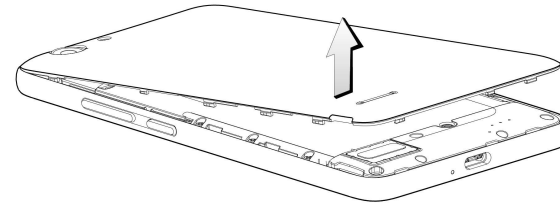
i Note:

Your phone supports a nano-SIM card ONLY.
Dimensions of a nano-SIM card: 9mm*12mm

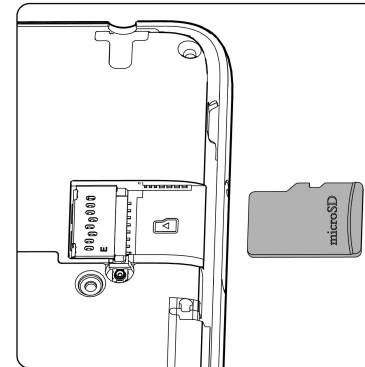


Inserting the memory card

1. Remove the back cover..



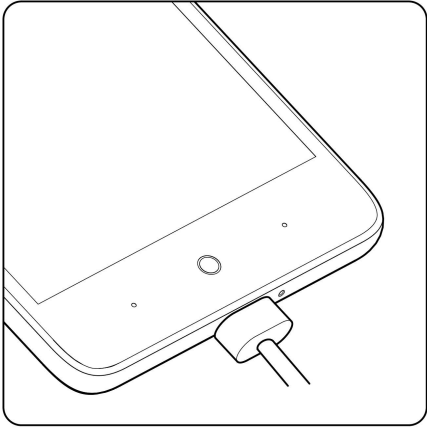
2. Insert the memory card into the memory card slot.



3. Install the back cover.

Charging the battery

Connect the phone to the power outlet using the included USB cable and power adapter.



Power on

Long press the Power key to power on the mobile phone.

Health and safety

▶ FCC Regulations:

This mobile phone complies with part 15 of the FCC Rules. Operation is subject to the following two conditions: (1) This device may not cause harmful interference, and (2) this device must accept any interference received, including interference that may cause undesired operation.

This mobile phone has been tested and found to comply with the limits for a Class B digital device, pursuant to Part 15 of the FCC Rules. These limits are designed to provide reasonable protection against harmful interference in a residential installation. This equipment generates, uses and can radiated radio frequency energy and, if not installed and used in accordance with the instructions, may cause harmful interference to radio communications. However, there is no guarantee that interference will not occur in a particular installation. If this equipment does cause harmful interference to radio or television reception, which can be determined by turning the equipment off and on, the user is encouraged to try to correct the interference by one or more of the following measures:

- Reorient or relocate the receiving antenna.
- Increase the separation between the equipment and receiver.
- Connect the equipment into an outlet on a circuit different from that to which the receiver is connected.
- Consult the dealer or an experienced radio/TV technician for help.

FCC Note:

Caution: Changes or modifications not expressly approved by the party responsible for compliance could void the user's authority to operate the equipment.

▶ RF exposure information (SAR)

This phone is designed and manufactured not to exceed the emission limits for exposure to radio frequency (RF) energy set by the Federal Communications Commission of the United States.

During SAR testing, this device was set to transmit at its highest certified power level in all tested frequency bands, and placed in positions that simulate RF exposure in usage against the head with no separation, and near the body with the separation of 10 mm. Although the SAR is determined at the highest certified power level, the actual SAR level of the device while operating can be well below the maximum value. This is because the phone is designed to operate at multiple power levels so as to use only the power required to reach the network. In general, the closer you are to a wireless base station antenna, the lower the power output.

The exposure standard for wireless devices employing a unit of measurement is known as the Specific Absorption Rate, or SAR.

The SAR limit set by the FCC is 1.6W/kg.

This device is complied with SAR for general population /uncontrolled exposure limits in

ANSI/IEEE C95.1-1992 and had been tested in accordance with the measurement methods and procedures specified in IEEE1528. This device has been tested and meets the FCC RF exposure guidelines when tested with the device directly contacted to the body.

The FCC has granted an Equipment Authorization for this model phone with all reported SAR levels

evaluated as in compliance with the FCC RF exposure guidelines. SAR information on this model phone is on file with the FCC and can be found under the Display Grant section of www.fcc.gov/oet/ea/fccid after searching on FCC ID: SRQ-Z862VL

For this device, the highest reported SAR value for usage against the head is 0.63 W/kg, for usage near the body is 1.34 W/kg.

While there may be differences between the SAR levels of various phones and at various positions, they all meet the government requirements.

SAR compliance for body-worn operation is based on a separation distance of 10 mm between the unit and the human body. Carry this device at least 10 mm away from your body to ensure RF exposure level compliant or lower to the reported level. To support body-worn operation, choose the belt clips or holsters, which do not contain metallic components, to maintain a separation of 10 mm between this device and your body.

RF exposure compliance with any body-worn accessory, which contains metal, was not tested and certified, and use such body-worn accessory should be avoided.

This device does not support V.O.I.P. function. It means that the functions of WLAN and Bluetooth do not have voice capability in the held to ear mode for phone service.

WARNING: This product contains a chemical known to the State of California to cause cancer, birth defects or other reproductive harm.

▶ CTIA

- a) Do not disassemble or open crush, bend or deform, puncture or shred.
- b) Do not modify or remanufacture, attempt to insert foreign objects into the battery, immerse or expose to water or other liquids, expose to fire, explosion or

other hazard.

- c) Only use the battery for the system for which it is specified.
- d) Only use the battery with a charging system that has been qualified with the system per CTIA Certification Requirements for Battery System Compliance to IEEE 1725. Use of an unqualified battery or charger may present a risk of fire, explosion, leakage, or other hazard.
- e) Do not short circuit a battery or allow metallic conductive objects to contact battery terminals.
- f) Replace the battery only with another battery that has been qualified with the system per this standard, IEEE-Std-1725. Use of an unqualified battery may present a risk of fire, explosion, leakage or other hazard.
- g) Promptly dispose of used batteries in accordance with local regulations.
- h) Battery usage by children should be supervised.
- i) Avoid dropping the phone or battery. If the phone or battery is dropped, especially on a hard surface, and the user suspects damage, take it to a service center for inspection.
- j) Improper battery use may result in a fire, explosion or other hazard.

For those host devices that utilize a USB port as a charging source, the host device's user manual shall include a statement that the phone shall only be connected to CTIA certified adapters, products that bear the USB-IF logo or products that have completed the USB-IF compliance program.

Using your phone safely



On the road

- Using a phone while driving is illegal in many countries. Please follow local laws and drive safely at all times.



Near sensitive electronics

- Don't use your phone near sensitive electronic equipment – particularly medical devices such as pacemakers – as it could cause them to malfunction. It can also interfere with the operation of fire detectors and other automatic-control equipment.
- For more information about how your phone affects pacemakers or other electronic equipment, please contact the manufacturer or your local distributor.
- Your phone may cause interference when used near TVs, radios or automated office equipment.



While flying

- Your phone can cause interference with aircraft equipment. So it's essential you follow airline regulations. And if airline personnel ask you to switch off your phone, or disable its wireless functions, please do as they say.



In hospital

- Your phone may interfere with the normal operation of medical equipment. Follow all hospital regulations and turn it off when you're asked to by posted warnings or medical staff.



At a petrol station

- Don't use your phone at petrol stations. In fact, it's always best to switch off whenever you're near fuels, chemicals or explosives.



Around water

- Keep your phone away from water (or any other liquid). It's not a waterproof model.



Making repairs

- Never take your phone apart. Please leave that to the professionals. Unauthorised repairs could break the terms of your warranty.



Broken antenna

- Don't use your phone if the antenna is damaged, as it could cause injury.
- Please do not touch or cover the antenna area (the upper part on the back of your phone) during the conversation to avoid affecting talk quality and consuming more battery power, which might reduce the talk time and standby time.



Around children

- Keep your phone out of children's reach. It should never be used as a toy and it might not be good for their health.



Original accessories

- Only use the original accessories supplied with your phone or those approved by the manufacturer. Using unapproved accessories may affect performance, make the warranty

void, break national regulations on the use of phones, or even cause injury.



Near explosives

- Turn off your phone in or near areas where explosive materials are used. Always obey local laws and turn off your phone when requested.



Emergency calls

- To make an emergency call your phone must be turned on and in an area where there's network coverage. Dial the national emergency number and touch 'send'. Explain exactly where you are and don't hang up until help has arrived.



Working temperature

- The working temperature for the phone is between 0°C and 40°C. Please don't use the phone outside the range. Using the phone under too high or too low temperature might cause problems.



Eyesight

- Please do not use your phone in dim light for a long time to avoid damage on your eyesight.
- For some people, exposure to flashing lights (such as TV) might trigger seizures or dizziness. If you have a history of seizures or epilepsy, consult a doctor before playing video games or enabling a flashlight feature on your phone.



Safety information

- In order to protect your personal information and prevent disclosure of sensitive information, please set a phone password and change it from time to time, make sure to back up important data, back up the data on your phone before disposal and reset your phone.
- Please do not download unknown applications and browse suspected websites in order to protect your phone against malicious applications and viruses.



At very high volume, prolonged listening to a phone can damage your hearing.

Charger care and safety

- Only plug into voltages between 110VAC and 220VAC. Using a voltage outside that range can damage the phone/charger – and cause the battery to leak or catch fire.
- Never short-circuit the charger – this may cause electrocution, overheating or damage.
- Don't charge the phone in direct sunlight or in an area where it's damp, dusty, or on a vibrating surface. And charging your phone near – or on – a TV or radio could interfere with transmission.
- Don't use the charger if the power cable is damaged. It may cause a fire or give someone an electric shock.
- Keep water well away from the charger. If the charger does get splashed by water, or any other kind of liquid, immediately unplug

注意此处各国家可能不同
越南应改为 100 和 240

it to avoid overheating, fire or electrocution.

- Don't take the charger apart. It could cause injury, give you an electric shock or catch fire.
- Never touch any charger, electric cable or socket with wet hands.
- Don't place heavy objects on the electric cable.
- If the cable is damaged, don't try to mend it yourself – it could cause a fire or electrocute you.
- Always unplug the charger before you clean it.
- When unplugging the charger, hold the plug itself, rather than pulling on the cable. A damaged cable can cause electrocution or fire.

Care and maintenance

Your phone is a delicate device. The following advice will help you to keep it looking good and performing well...

- Use a soft dry cloth to clean your phone, battery and charger. Don't use liquids such as alcohol, dilution agents or benzene.
- From time-to-time, clean the socket where the charger cable connects to the phone. Dust tends to gather there. This will ensure a really good connection.
- Don't use needles, pen points or other sharp objects on the keypad or screen.
- Don't use your phone with wet hands – it could injure you and damage the phone.
- Don't use your phone in dusty or dirty environment.
- Keep your phone away from extremes of heat – like radiators or ovens. It may explode if it gets too hot.
- If your phone gets wet and the colour of the label on it changes, the warranty will be void, even if the warranty period hasn't expired.
- If there's anything wrong with the phone, battery, charger, or any accessory, please send them to your nearest service centre for inspection.

Legal notice

Copyright Statement

Copyright © 2016 by ZTE Corporation

All the copyrights of this document herein belong to ZTE Corporation. Without the written permission of copyright owner, no part of this publication may be excerpted, reproduced, translated by any person or entity in any form or by any means.

This document is subject to change without prior notice.

ZTE Corporation keeps the right to make the final explanation to this document.

Trademarks

Android is a trademark of Google, Inc.

All other trademarks remain the property of their respective owners.

Statement of Third-party Applications

During the installation process of some third-party applications, the issues of repeated restart or abnormal use of software might be caused by incompatibility of the third-party applications, rather than the phone itself.