

ZTE CORPORATION

D90 CDMA 1X-EVDO Mobile Phone  
User Manual

Edition: 1<sup>st</sup> edition, Oct., 2006

Software version ZTED90V1.0.0B01

Copyright © 2006 by ZTE Corporation

All rights reserved.

No part of this publication may be excerpted, reproduced, translated or utilized in any form or by any means, electronic or mechanical, including photocopying and microfilm, without the

prior written permission of ZTE Corporation.

ZTE Corporation operates a policy of continuous development. ZTE Corporation reserves the right to make changes and improvements to any of the products described in this document without prior notice.

For this product's Recycling Manual based on WEEE directive, please send email to inquiry or visit the website below to download:

WWW: <http://ensupport.zte.com.cn>

E-mail: [weee@zte.com.cn](mailto:weee@zte.com.cn)

#### **LIMITED WARRANTY**

ZTE warrants to the original purchaser that the cellular product and its enclosed accessories will be free from defects in material and workmanship, according to the following terms and conditions:

##### **WHAT THIS WARRANTY COVERS:**

The limited warranty extends only to the original purchaser (end user) and is not assignable or transferable to any subsequent purchaser/end user.

During the warranty period ZTE or officially appointed service agent will repair or replace any defective product or parts thereof at its discretion.

This limited warranty is applicable to the customer/end user that purchased the product from an official dealer in the United Kingdom.

The purchaser (end user) must retain the original purchase invoice/till slip in order to enforce this limited warranty.

##### **WHAT THIS WARRANTY DOES NOT COVER:**

Defects or damages resulting from the misuse of this product:

Defects or damages from abnormal use, abnormal conditions, improper storage, exposure to moisture or dampness, unauthorized modifications, unauthorized repair, neglect, abuse, accident, alteration, improper installation, blown fuses, food or liquid spillage, acts of God and shipping damage.

Breakage or damage to antennas unless caused directly by defects in material or workmanship.

The cost of delivery or transportation of the product to the dealer of officially appointed service center will be borne by the purchaser(end user).

Products received for repair by the dealer or authorized service center after the product warranty has expired.

Products that have had the serial number removed or defaced.

This limited warranty is in lieu of all other warranties, expressed or implied in terms of marketability or fitness for a particular use. specifically the company will accept no damage caused by or due to failure of operation or malfunction of the product, or arising from the use or inability to use the product.

Damage resulting from the use of non-ZTE approved accessories.

Scratches and damage caused by normal use.

Products used outside published maximum rations.

Consumables such as fuses.

(12) Products that have been subject to an unauthorized removal or deactivation of the network operator-lock function.

Thank you for purchasing this D90 handset. In the unlikely event that your handset needs to be repaired please contact the Customer Services for information on how to return your handset for repair.

Contents

**FOR YOUR SAFETY..... 8**

GENERAL CARE ..... 8

AIRCRAFT SAFETY ..... 9

HOSPITAL SAFETY..... 9

GENERAL SAFETY ..... 9

ROAD SAFETY ..... 10

VEHICLES EQUIPPED WITH AN AIR BAG ..... 12

EFFICIENT USE..... 12

RADIO FREQUENCY ENERGY ..... 12

EMERGENCY SERVICES..... 12

COPYRIGHT NOTICE ..... 13

<b>GETTING STARTED .....</b>	<b>14</b>
OVERVIEW .....	14
PHONE AT A GLANCE .....	14
KEY DEFINITION .....	15
DISPLAY SYMBOLS .....	16
TECHNICAL INFORMATION .....	17
THE UIM CARD .....	17
MEMORY CARD .....	18
Using your phone's Micro SD memory card.....	18
BATTERY .....	18
POWER ON/OFF YOUR PHONE.....	20
UNLOCKING MOBILE PHONE.....	20
CONNECTING TO THE NETWORK.....	20
<b>BASIC OPERATIONS .....</b>	<b>21</b>
MAKING A VOICE CALL.....	21
Using the keypad.....	21
Making a call from Contacts.....	21
Dialing the number in the list .....	21
ANSWERING A CALL .....	21
<b>CONTACTS .....</b>	<b>23</b>
LIST ENTRIES .....	23
NEW ENTRY .....	24
GROUPS.....	24
SPEED DIALS .....	25
SEARCH .....	25
<b>CALLS.....</b>	<b>26</b>

CALL LOG .....	26
CALL TIMERS .....	26
<b>MESSAGES .....</b>	<b>28</b>
VOICE MAIL .....	28
TEXT AND MULTIMEDIA MESSAGE .....	28
Send New .....	28
Inbox .....	30
Outbox/Send .....	30
Templates .....	31
Drafts .....	31
Saved .....	31
Settings .....	31
Memory info .....	32
WEB ALERT .....	32
EMAIL .....	32
SHORT CODES .....	32
<b>BROWSER .....</b>	<b>33</b>
LAUNCHING AND NAVIGATING THE BROWSER .....	33
Settings .....	34
<b>MULTIMEDIA .....</b>	<b>35</b>
GET NEW .....	35
MUSIC .....	35
TV & RADIO .....	35
RINGTONES .....	35
WALLPAPER .....	35
VIDEO .....	36

CAMERA .....	36
Take photo and video.....	36
MY ALBUMS .....	36
Sound Albums.....	37
Photo album.....	37
Video album.....	37
Online album.....	38
External Memory.....	38
MEMORY INFO .....	38
<b>SHOP .....</b>	<b>38</b>
<b>GAMES .....</b>	<b>38</b>
<b>TOOLS .....</b>	<b>39</b>
GET NEW .....	39
GPS SERVICES.....	39
CALCULATOR .....	39
ALARM CLOCK.....	40
Add alarm .....	40
Alarm Options .....	41
Scheduler .....	41
NOTEPAD .....	41
EZ TIP CALC .....	42
WORLD CLOCK.....	42
VOICE MEMO.....	42
<b>SETTINGS.....</b>	<b>42</b>
SOUND.....	43
Ringers .....	43

Keypad.....	43
Volume.....	43
Alerts .....	44
DISPLAY .....	44
GAMES/TOOLS.....	44
OTHERS .....	45
Nav. Key Shortcuts .....	45
Call setup.....	45
BLUE <b>TOOTH</b> .....	47
GPS .....	47
SYSTEM .....	48
Phone info .....	48
System.....	48
Security.....	48
Reset difault.....	49
OPEN/CLOSE AIRPLANE MODE.....	49
<b>TEXT INPUT</b> .....	<b>50</b>
OVERVIEW.....	50
<b>TROUBLESHOOTING .....</b>	<b>52</b>
<b>ANNEX GLOSSARY .....</b>	<b>53</b>

## For your safety

### General Care

A handset contains delicate electronic circuitry, magnets and battery systems. You should treat it with care and give particular attention to the following points:

- Do not allow the handset, battery or accessories to come into contact with liquids or moisture at any time. Do not immerse in any liquid.
- Do not place anything in the folded handset.
- Do not leave the handset or the battery in places where the temperature could exceed 60 °C, e.g. on a car dashboard or a windowsill, behind glass in direct sunlight, etc.
- Take care not to allow metal objects, such as coins or key rings to contact or short-circuit the battery terminals.
- Do not put the handset's battery in your mouth, as battery electrolytes may be toxic if swallowed.
- This equipment is fitted with an internal battery that can only be replaced by a qualified service engineer.
- Do not put a battery into a microwave oven, dryer, or high-pressure container.
- Do not pierce battery with a sharp object such as a needle.
- Do not disassemble or modify the battery.
- Do not place the handset alongside computer disks, credit cards, travel cards and other magnetic media. The information contained on disks or cards may be affected by the handset.
- Do not paint the handset.
- Do not remove the handset's battery while the handset is switched on.
- Do not dispose of battery packs in a fire. The handset's Li-ION batteries may be safely disposed of at a Li-ION recycling point.
- Do not attempt to dismantle the handset or any of its accessories.
- There is a risk of explosion if the battery is replaced with an incorrect battery type. Dispose of the used battery in accordance with the manufacturer's instructions.
- Do not contact battery directly to an electric outlet or cigarette lighter charger. Use only authorized charger units.
- When the battery is thrown away, be sure it is non-conducting by applying vinyl tape to the (+) and (-) terminals.
- Do not drop, throw, or subject the handset to rough treatment.



Stop using the battery if abnormal heat, odor, discoloration, deformation, or abnormal condition is detected during use, charge, or storage.

Do not use with a damaged or deformed battery.

Remove the battery whose life cycle has expired from equipment immediately.

When a handset is set to Vibration mode, the vibration can sometimes cause the D90 handset to move.

Use a damp or anti-static cloth to clean the handset. Do not use an ordinary dry cloth or electrostatic cloth. Do not use chemical or abrasive cleaners as these could damage the case.

Remember to make backup copies of all important data on your handset.

## Aircraft Safety

Switch off your phone when inside or near aircraft. The use of handsets in aircraft is illegal. It may be dangerous to the operation of the aircraft and it may disrupt the cellular network. Failure to observe this instruction may lead to suspension or denial of phone service to the offender, or legal action, or both.

## Hospital Safety

Switch off your phone and remove its battery in areas where the use of handsets is prohibited. Follow the instructions given by the respective medical facility regarding the use of handsets on their premises

## General Safety

In some countries national law prohibits private copying of copyrighted material. Please check the national legislation of the applicable country concerning the use of such material.

Please check roaming agreement availability with your network operator.

In the unlikely event of a battery leak, take care to keep the battery discharge away from your eyes or skin. If the leakage does come into contact with the eyes or skin, please flush thoroughly in clean water and consult with a doctor.

Do not solder a battery directly

The earpiece may become warm during normal use. Also, the handset itself may become warm while the battery is being charged.

Be careful not to place the handset near heat sources (such as a heater) or too close to the edge of the table.

Third party equipment: The use of third party equipment, cables or accessories, not made or authorized by ZTE, may invalidate the warranty of your phone and also adversely affect the phone's safety/operation.

Remember to recycle: the cardboard packing supplied with this handset is ideal for recycling.

Do not use the handset on the ground without the permission of the ground staff

Many jurisdictions have laws and regulations about taking pictures in public or private areas and regarding the processing and further use of such pictures. ZTE encourages its customers to obey all laws and to honor the personal rights of others.

The use of Mobile Phones is not allowed in some radiation sensitive areas, such as hospitals, research centers and airplanes. The user is responsible to power-off the device. If there is any uncertainty, the battery shall be removed.

Observe "Turn off mobile" signs, such as those near petrol stations, or explosives and turn off handset/device.

If you have a heart condition, be careful with the settings of call vibration or tone volume.

Do not allow children to play with the handset, charger or batteries.

Do not use the handset where blasting is in progress.

The operation of some medical electronic devices, such as hearing aids and pacemakers, may be affected if a handset is used next to them. Observe any Note signs and the manufacturer's recommendations.

Take care not to put your phone in the back pocket of your trousers or skirt and then sit on it. Also, do not put your phone at the bottom of bag where it may subject to excessive weight or pressure. Doing so may damage the LCD and camera lens and cause them malfunction.

Your phone contains metal, which may cause you an itch, a rash or eczema depending on your constitution or physical condition.

Do not leave the battery pack empty or disconnected for a long time, otherwise some data may be initialized.

## Road Safety

You must exercise proper control of your vehicle at all times. Give your full attention to driving.

Observe all of the recommendations contained in your local traffic safety documentation.

Pull off the road and park before making or answering a call, if driving conditions so require.

You **MUST NOT** stop on the hard shoulder of a motorway to answer or make a call, except in an emergency.

Check if local laws and/or regulations restrict the use of handsets while driving.

Switch off your handset at a refueling point, such as a petrol station, even if you are not refueling your own car.

Do not store or carry flammable or explosive materials in the same compartment as a radio transmitter.

Electronic vehicle systems, such as anti-lock brakes, speed control and fuel injection systems are not normally affected by radio transmissions. The manufacturer of such equipment can advise if it is adequately shielded from radio transmissions. If you suspect vehicle problems caused by radio transmissions, consult your dealer and do not switch on the handset until it has been checked by qualified approved installers.

**Exposure to radio frequency energy**

Radio wave exposure and Specific Absorption Rate (SAR) information

- The handset is designed to comply with safely, requirements for exposure to radio waves. This requirement is based on scientific guidelines that include safety margins designed to assure the safety of all persons, regardless of age and health.
- The radio wave exposure guidelines employ a unit of measurement known as the Specific Absorption Rate, or SAR. Tests for SAR are conducted using a standardized method with the phone transmitting at its highest certified power level in all used frequency bands.
- While there may be differences between the SAR levels of various ZTE phone models, they are all designed to meet the relevant guidelines for exposure to radio waves.
- The SAR limit recommended is 1.6W/kg averaged over one(1) gramme of tissue.
- The highest SAR value for this model phone tested by MORLAB for use at the head is 0.972 W/kg(1g)
- The highest SAR value for this model phone tested by MORLAB for use at the body is 0.342W/kg(1g)
- SAR compliance for body-worn operations is restricted to belt-clips, holsters, or similar accessories that have no metallic component in the assembly and which provide at least 1.5 cm separation between the device, including its antenna, and the users body

This device complies with part 15 of the FCC rules. Operation is subject to the following two conditions: (1) this device may not cause harmful interference, and (2) this device must accept any interference received, including interference that may cause undesired operation.

**NOTE:** The manufacturer is not responsible for any radio or TV interference caused by unauthorized modifications to this equipment. Such modifications could void the user's authority to operate the equipment.

**NOTE:** This equipment has been tested and found to comply with the limits for a Class B digital device, pursuant to part 15 of the FCC Rules. These limits are designed to provide reasonable protection against harmful interference in a residential installation. This equipment generates uses and can radiate radio frequency energy and, if not installed and used in accordance with the instructions, may cause harmful interference to radio communications. However, there is no guarantee that interference will not occur in a particular installation. If this equipment does cause harmful interference to radio or television reception, which can be determined by turning the equipment off and on, the user is encouraged to try to correct the interference by one or more of the following measures:

- Reorient or relocate the receiving antenna.
- Increase the separation between the equipment and receiver.
- Connect the equipment into an outlet on a circuit different from that to which the receiver is connected.
- Consult the dealer or an experienced radio/TV technician for help

## Vehicles equipped with an air bag

An air bag inflates with great force. Do not place objects, including either installed or portable wireless equipment, in the area over the air bag or in the air bag deployment area. If in-vehicle wireless equipment is improperly installed and the air bag inflates, serious injury could result.

### Third party equipment

The use of third party equipment, cables or accessories, not made or authorized by ZTE, may invalidate the warranty of your handset and also adversely affect the handset's operation. For example, use only the ZTE mains cable supplied with the AC charger.

## Efficient use



For optimum performance with minimum power consumption, please do not cover the antenna with your hand. Covering the antenna affects call quality, may cause the handset to operate at higher power level than needed, and may shorten talk and standby times.



## Radio frequency energy

Your handset is a low-power radio transmitter and receiver. When it is turned on, it intermittently receives and transmits radio frequency (RF) energy (radio waves). The system that handles the call controls the power level at which the handset transmits.

## Emergency Services

To make an emergency call in any country:

- 1 Ensure that your handset is on and in service.
- 2 Press  key as many times as needed to clear the display and ready the device for calls.
- 3 Enter the official emergency number for your present location.
- 4 Press  key to dial the number. Follow instructions received and do not end call until told to do so.

When the UIM card is not inserted or when the dial lock function is on, Press **Right soft key [SOS]** and then enter the official emergency number for your present location. Press  key or  key to dial the number.

Note:

Tell the operator which service you require: Police, Ambulance, Fire Brigade, Coastguard or Mountain Rescue Service. Give your position and, if possible, remain stationary to maintain contact.

Due to the nature of the cellular system, the connection of emergency calls cannot be guaranteed. You should never rely solely on any wireless device for essential communications like medical emergencies.

## Copyright Notice

The video/audio recordings you make/download are protected by copyright laws. They are for personal use only and must not be otherwise used without the permission of the copyright owner.

## Getting Started

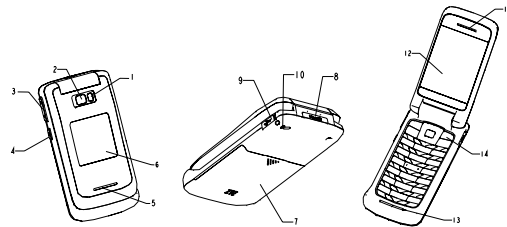
### Overview

Thank you for purchasing D90 CDMA 1X-EVDO Mobile Phone.

The D90 is capable of operating in CDMA networks. Your phone provides many functions which are practical for daily use, such as camera, MP3 player, video recorder, WAP, and more.

To guarantee the mobile phone always in its best condition, please read this manual carefully and keep it for further use.

### Phone at a glance



- 1) Camera flash
- 2) Camera lens
- 3) Volume key
- 4) Camera key
- 5) Loudspeaker
- 6) out lens
- 7) battery cover
- 8) MicroSD card slot
- 9) Charger port (also for headset connector) slot
- 10) Strap holder
- 11) earpiece
- 12) Display
- 13) Microphone

14) Keypad

Key definition



Left soft key

Execute prompts that appear in the lower left corner of the screen directly above it. These prompts change according to the screen content.



Right soft key

Execute prompts that appear in the lower right corner of the screen directly above it. Shortcut key to access 3 interface. These prompts change according to the screen content.



Send key

Make and answer calls. Bring out call logs in standby mode.



End key

End a callscall and close down applications. Power on/off.



Left/Right/Up/Down/OK key

**Up/Down key:** Used for scrolling up and down lists, for example 'Contacts' lists or web pages; Used as shortcut keys in standby mode.

**Left/Right key:** Move the cursor left and right when editing; Used as shortcut keys in standby mode. Switch between different table menu.

**OK key:** Confirms actions/make selections. Execute prompts that appear in the lower middle of the screen directly above it.



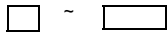
0~9 Number key

Enter numbers and characters; Speed dial; Select options when entering menu.

\* key and # key



They have different functions in different modes or function menus.



Input the alphabet

Camera key



Activates the camera when in the standby mode.

## Display Symbols



Indicates the GPRS service is available.



Indicates the 3G service is available.



Indicates you have a new text message or a new multimedia message.



Indicates you have a new E-mail.



Indicates you have a new Wap push message.



Indicates the message memory is full.



Indicates the E-mail memory is full.



Indicates the Wap push message memory is full.



Indicates you are roaming.



Indicates the amount of charge in your battery.



Indicates you have a missed call.



Indicates the headset profile is activated.



Indicates you have a missed video call



Indicates call forward is active



Indicates the ringtone is set to shut-off



Indicates the handset is set to vibration with the earpiece connected.



Indicates the handset is set to vibration



Indicates the data communication in progress.



Indicates the alarm clock has been set.



## Technical information

### Handset

Type	D90
Dimensions (W×L×H)	49.5mm×89mm×24.5mm (antenna excluded)
Weight	108g (including battery)

### Battery

Continuous standby time	Upper Limit 200 hours (subject to network status)
Continuous talk time	Upper Limit 150 minutes (subject to network status)
Charge time	Approximately 3 hours

For other parameters about battery and charger, please refer to the sticker on real object.

### Mains Charger

Input	100-240V, 50/60Hz, 200mA
Output:	5.0V 700mA max

## The UIM Card

Your phone has a UIM card slot located underneath the battery. However, the UIM is not functional in this phone model. Avoid placing anything into the card slot.

## Memory card

Your phone allows you to use a micro SD memory card and an adapter to expand the phone's available memory space. This digital card makes it easy to exchange images, music and voice data quickly between SD compatible devices.

### Using your phone's Micro SD memory card

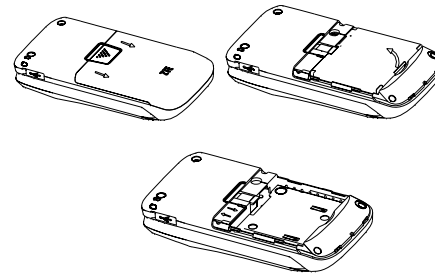
Your phone is equipped with a micro SD memory card(secure digital) to expand your phone's available space, it allows you to easily store images, videos, music files, and voice data in your phone.

## Battery

### 1. Removing the Battery

Ensure that your handset is switched off and the charger is disconnected before removing the battery.

Slide the back cover toward the bottom of the phone, lift up and remove. Then insert your finger into the finger grip and lift the battery away from the handset.



### 2. Installing the Battery

Place the bottom of the battery into position, push down on the upper section of the battery until it clicks into place and then set the back cover. Make sure that the back cover latch is secure.

#### Note:

The handset automatically switches off if the battery voltage is too low.

Batteries have a limited life span. If the battery does not last as long as it used to, the battery may be coming to an end. Replace the battery with a new one of the same type.

When not using the battery for a long period, remove it from the phone and store it in a cool dry place.

### 3. Charging the battery

Your phone is powered by a rechargeable battery. The battery is not fully charged when you buy your phone but there may be enough power in the battery to turn the phone on. Note that a new battery's full performance is achieved only after three complete charge and discharge circles. Charge the battery by following the procedure indicated below.

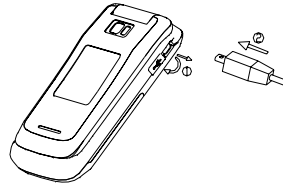
With the battery in position on the phone connect the lead from the charger to the bottom of the phone.

Connect the charger to a standard AC wall socket.

If the battery is charging whilst the phone is turned on, the battery indicator on the status line will animate. If the battery is charging when the phone is off the screen will display a charging animation that indicates the phone is charging. If the phone is not used for a long time or the battery is completely flat it may take a few minutes before this indicator appears.

When the battery is fully charged, a full battery power level icon will be displayed.

When charging, ensure the power cable is kept clear of walkways and does not cause a hazard.



#### 4. Battery Information and Care:

Using unauthorized charger may cause danger and violate the authorization and warranty rules of the phone.

Please charge the battery in time when it no longer provides acceptable performance. Do not use any charger or battery which is damaged.

#### Notes:

1. Do not charge the battery when the back cover is removed.

2. Do not disassemble the battery.
3. Do not short-circuit the battery. Accident short-circuiting can occur when a metallic object (coin, key or pen ) causes direct connection of the + and – terminals of the battery.
4. Do not dispose of battery packs in a fire. The handset's Li-ION batteries may be safely disposed of at a Li-ION recycling point. Do not dispose as household waste.
5. Do not attempt to dismantle the handset or any of its accessories.
6. Do not put a battery into a microwave oven, dryer, or high-pressure container.
7. Do not contact battery directly to an electric outlet or cigarette lighter charger.
8. Do not pierce battery with a sharp object such as a needle.
9. Stop using the battery if abnormal heat, odor, discoloration, deformation, or abnormal condition is detected during use, charge, or storage.
10. Keep the battery's metal contacts clean.
11. Battery life will vary due to usage patterns and environmental conditions. It will decrease if exposed to extreme hot or cold temperatures.
12. The phone's talking time and standby time are based on ideal working environments. The use of extended backlighting, Browser, and network conditions affect battery life and talk/standby time.

## Power on/off Your Phone

Press and hold the **End key** to power on/off the phone. The mobile will then display the following prompts:

**Enter password:** If handset lock code has been activated. The default password is 0000.

Once the necessary security conditions have been fulfilled the handset will register with the network.

Warning: Do not power the phone on when wireless phone use is prohibited or when it may cause interference or danger.

## Unlocking mobile phone

By setting the handset lock code, you can protect your phone and UIM card against unauthorized use.

Method to unlock the phone: key in handset lock code and then press **OK key**.

**Note:** If you forget your handset lock code, please contact with your dealer or the authorized local customer service center. Please refer to Section "Settings----Security".

## Connecting to the Network

After the phone and UIM card are unlocked, the mobile phone will automatically search for the network. When the phone has successfully registered on a network the network service provider's name/logo appears on the display.

## Basic Operations

### Making a voice call

#### Using the keypad

- 1 Make sure your handset is powered on.
- 2 Enter the phone number including the full area code by using the keypad. If entering an incorrect character use the **Clear key** to delete a digit or press and hold the **Clear key** to delete all digits.
- 3 Press **Send key** to make a voice call.
- 4 Press **End key** to end the call. To cancel the call attempt, press **End key**.

**Note:** To make an international call, press **? ? key** for the international access code "+" and enter the country code, area code(omit the leading zero, if necessary ) and phone number. To make an emergency call, enter an emergency number and press the **Send key**. If possible, remain stationary and keep the line connected.

#### Making a call from Contacts

You can also make a call by choosing a record from your Contacts.

In the standby mode press **Contact-List entries** to display the contacts list.

Scroll to the desired entry then press **Send key** to make a call.

Press **End key** to end the call.

#### Dialing the number in the list

Generally, all calls you have made or received are saved in a list of the phone. All numbers are grouped as Dialed Calls, Received Calls and Missed Calls. Your mobile phone lists all the numbers so that you can view all the call logs. When the list is full, old numbers will be deleted automatically. You can press **Send key** to dial any number in the list. |

### Answering a call

When you receive a call the ring tone, the illumination and the vibrate function will be activated (depending on the current settings). When Calling Line Identification (CLI) function has been activated by the caller, the caller's phone number will be displayed. If the calling party select to hide their phone number, **Your phone will show a message indicating** that the phone number has been withheld.

Open the flip and press **Send key** or **OK key** to answer an incoming call.

**Note:** When **Any key** to answer function is activated you can press any key except the **Right soft key**, **Left soft key** and **End key** to answer the call.

**Note:** If a compatible headset is connected to the phone, you can answer or end the call by pressing the headset button.

Press **Right soft key** or **End key** to reject.

**Press Left soft key** to select following operations during a voice call:

1. Hold: Put the current call on hold.

- 2. End call: End current call.
- 3. Record: Record the current call.
- 4. DTMF Off/On: Enable or disable sending DTMF tone.
- 5. SMS: Switch to SMS interface during a call.
- 6. Contacts: Switch to Contacts interface during a call.

To end the call, press the **End key** or close the handset. And the call duration is displayed.

**Note:** Multi-party conversation is supported. It needs network support.

When the headset is connected, closing the handset will not end the call.

You can answer a call while using the **Contacts** or other menu features.

Useful tips for answering a call are shown below:

Operation	Procedure
Turning off the Ringtone	You can mute the ringtone by the following operation during a call: Press Left soft key-Mute.
Rejecting a call	When there is an incoming call, you can reject the call by the following operation: Press <b>End key</b> . Press Right soft key [Reject]. Close the front cover of the handset.
When you miss a call	You will be notified that you have a missed call by an icon in standby mode and the missed call number will be saved to the <b>Missed calls</b> list. Press <b>OK key</b> to view the details. Once you've viewed the Missed call details, the icon disappears.

**Note:** If you are inside a building, being near a window may give you better reception. You can see the strength of your signal by the signal bar on your screen.

## Contacts

In the standby mode, press **Menu**, select **Contacts** and then press **OK key** to access the **Contacts** menu. This menu allows you to save and manage contact address information. In **Contacts**, you can add a new address or search saved contact addresses by name. You can also add a personal ring tone or photo to a contact card.

To quickly access the **Contacts** menu, press **Right soft key** while in the standby mode.

### List entries

Select **List entries** to access all lists view interface. Scroll the **Up/Down key** to select the desired one. You can select **View** for the contact information and **Options** to display the following popup menu:

**New entry:** Add a new contact.

**Send:** Send message or e-mail to the phone number.

**Send Bus. Card:** You can send the name and number of the record as text message.

**Add Digits:** Switch to the number input mode if one phone number is saved. Or enter the number selection interface. You can edit the number or make a call to the phone number.

**Delete:** Delete the selected record.

**Groups:** Display the group list interface. You can set the current record to the selected group.

**Set Speed Dial:** Assign the current number to one of the speed dialling keys directly. Speed dialling is a quick way to call frequently used numbers.

**Delete All:** Delete all records.

**Memory info.:** Check the total amount of phone numbers that has already been stored and can be stored at most in the handset.

Press **End key** to exit.

## New entry

This menu allows you to add a new contact record. In the standby mode, select **Menu-Contacts-New entry** to display the input interface. If the memory is not available there will be prompt on the display.

**Name:** Enter the name you want to add. Then scroll the **Down key** to select other items.

**Phone:** Enter the mobile phone number.

**Home:** Enter the house phone number.

**Office:** Enter the office phone number.

**Email/Email2:** Enter the email address.

ShotCode:

**Address:** Input the address information.

URL:

**Categories:** Select the group.

**Ringtone:** Select and set the desired ring tone.

**Photo:** Select and set the coming call photo.

**Notes:** Input the remark information.

You can choose input the options above, however, you must enter at least the name and one phone number. **The group of name also can be chosen.** After inputing all information press **OK key/Save** to confirm, and Press **End key** to exit.

## Groups

In the standby mode, select **Menu-Contacts-Groups** to display the group lists. You can add contacts to any of the five caller groups. The default groups are Family, Colleague, Friend, VIP and Unclassified. If the user doesn't appoint the record to any group, the record will be sorted into the unclassified group.

**Rename:** Scroll the **Down key** to one group that you want to rename. Edit the new name then save.

**Send:** Switch to the contact lists of all records and then select to mark the desired record.

**Select:** Switch to the contact lists of current group.



## Speed dials

In the standby mode, select **Menu-Contacts-Speed dials** to enter. This menu allows you to check current list of Speed dials, press **OK key [View]** to view the contact information including names, Speed dial number and phone number specified to this number key. **Press and hold the specified number key to dial the phone number directly under standby mode.** Press and hold the **1 key** to enter the voicemail directly.

## Search

In the contacts list view interface, key the names or first few letters of the desired name in the searching box at the bottom of the display, Press the **OK key/View** then the cursor moves to the record whose name has the similar initial.

## Calls

In standby mode, press **Menu**, select **Calls** and then press **OK key** to access the **Calls** interface.



## Call log

1. Select **All calls** to view all calls list.
2. Select **Dialled calls** to view the phone numbers that you have most recently called or attempted to call.
3. Select **Received calls** to view the phone numbers that you have most recently answered.
4. Select **Missed calls** to view the phone numbers from which somebody has most recently tried to call you with no success.
5. Press the **OK key** to view the desired call list.
6. Press **Up/Down key** to highlight the desired call record.
7. Press the **Right soft key [Save]** to save the number to UIM card or phone.
8. Press **Left soft key [Options]** to display the following popup menu:
  - ◇ Dial: Make a voice call to the number.
  - ◇ Add digits: Switch to the number input mode in when one phone number is saved or enter the number selection interface. You can edit the number or make a call to the phone number.
  - ◇ Send SMS: Send text message or multimedia message to the number.
  - ◇ Delete: Delete the call log.
  - ◇ Delete all: Delete all call logs.

Note: The phone registers missed and received calls only if the network support these functions and the phone is powered on and within the network service area.

## Call timers

You can view the approximate duration of your calls.

Last call: Check the duration of your last call.

All calls: Check the total duration of all your calls.

Lift time: Check the total airtime minutes logged on your phone.

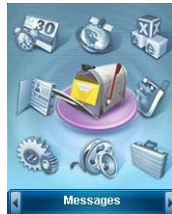
Date transferred: Check the transferred data stream.

Connect time: Check the connect time of transferring data.

And you can clear all the call duration timers by pressing **Right soft key [Reset]**. To reset timers needs password. The default of security code is 0000.e

Note: The actual invoice for calls and services from your service provider may vary, depending on the network features, rounding off for billing, rate and so forth.

## Messages



You can send or receive a range of different message types from your phone. Your phone has the following message options:

- ✧ **Voice mail:** Allows you to access your voice mailbox and check for voice messages.
- ✧ **Text and multimedia:** Allows you to compose and send text and multimedia messages to other phones able to receive the messages.
- ✧ **Web alert:** Allows you to view specific web alert from your service provider.
- ✧ **Email:** Allows you to access your email messages.
- ✧ **Short codes:** Allows you to access pre –configured short code. For more details consult your service provider.

In standby mode, press **Menu**, select **Messages** and then press **OK key** to access the **Messages** interface.

Your phone is capable of creating and receiving text, multimedia, voice and email messages. These functions can only be used if they are supported by your network operator.

### Voice mail

Dial Voice Mail:

Clean Icon:

### Text and multimedia Message

In the standby mode, select **Menu-messages-Text and Multimedia** to access the submenu:

Send New

Using your phone you can send text and multimedia messages to other mobile phones in local area and rest of the world, supported by your service provider.

#### To send a message

1. In the standby mode, Select **Menu-Messages-Text and multimedia- Send new**.
2. Enter the phone numbers or email address of recipients in the address field. You can directly enter the recipients' number using the keypad. After entering one number or address, press

the **Down key** and then enter another one. You can also enter phone numbers by pressing the **OK key [Contacts]** to display the all records lists. Scroll the **Down key** to highlight the desired contact, Select **Mark-Select** to mark one, and then scroll the **Down key** to select others. You can send a message to a maximum of 10 numbers.

3. When you are finished entering all numbers, press the **Down key** to move the cursor to the lower window to create your message using the keypad. For more information on entering text, please refer to “Entering text”.
4. Select **Options-Send** to send the message after finishing your message.

### Slide options

You can add slide files to your message. Select **Options-Slide** to popup the slide submenu:

- ✧ Add slide: Switch to the slide adding interface. Press **OK key** to select adding new image, audio or video files.
- ✧ Delete Slide: Delete the highlighting slide.
- ✧ Pre Slide: Preview the highlighting slide.
- ✧ Next Slide: View the next slide when you add more one slide.
- ✧ Slide timing: Allows you to set the duration(in seconds) of each slede.

### To add image, audio and video files to your message

You can add pictures, audio clips or videos to your message.

1. From the message composition screen, Select **Insert** to enter the submenu.
  - ✧ Image: Switch to the photo folder lists.
  - ✧ Audio: Switch to the audio folder lists.
  - ✧ video: Switch to the video folder lists.
  - ✧ New image: Start the camera to take a photo and then insert it to your message.
  - ✧ New audio: Start to create a new audio file and then insert it to your message.
  - ✧ New video: Start the camcorder to create a new video files and then insert it to your message
  - ✧ Attachment:
2. After the file is attached to your message, you can now finish to composing and send your message.

### To save your message

You can save a draft of your message prior to sending it.

1. From the message composition screen, select **Options-Save as drafts**. The message is now stored in the draft folder.
2. You can select one draft to edit and send from the lists .Once the message is sent, the draft will be deleted.

3. Text messages and multimedia messages draft are saved in same folder. You can distinguish them according to the icons.

### Other options

From the message composition screen, select **Options** to check other functions:

1. Preview: Preview the composing message.
2. Erase item: Select to erase image, audio or video items of the current message.
3. Add cc/bcc/sub: Enter the cc/bcc and subject text. When you are finished inputting press **Left soft key** to save.
4. **Attachments:**
5. Quick text: Quick text messages are used to enter common responses to questions. A quick text can be selected and automatically entered into the message. Quick text can also be customized to whatever you want by editing the pre-set messages already stored in your phone. For more information see "**Settings-Quick text Settings**".

### Inbox

This folder contains all your received text and multimedia messages. From this folder, you can view your received messages, reply to or forward the message to another destination.

1. In the standby mode, Select **Menu-Messages-Text and multimedia- Inbox**. Your messages appear in a list.
2. Highlight the desired message and press **OK key**. The message appears on screen.

### To reply a message

1. Highlight the desired message and press **View- Reply**.
2. Compose your reply message. For more information please refer to "**Send New**".

Notes: The address field is already filled in when replying to a message.

### To select Inbox options

1. In the standby mode, Select **Menu-Messages-Text and multimedia- Inbox**. Your messages appear in a list.
2. Press the **Left soft key** to pop up the **Options** menu:
  - ✧ Delete: Allows you to delete the message.
  - ✧ Delete all: Allows you to delete all the messages in the list.
  - ✧ Forward: Allows you to forward a copy of the message to another person.
  - ✧ Move to saved: Allows you to move the message to the **Saved** list.

### Outbox/Send

This folder contains all the messages you have sent or are waiting to send text and multimedia messages. From this folder, you can edit and resend your messages.

### To forward or send your messages

1. In the standby mode, select **Menu-Messages-Text and multimedia- Outbox/Sent**. Your messages appear in a list.

2. Highlight the desired message and select one of the following options:

- ✧ If the message is in **Sent** folder, select **Edit** to recompose the message and then select **Options-send** to resend the message. To forward the message to a new number, select **Options-Forward**.
- ✧ If the message is in **Draft** folder, select **Edit** to recompose the message and then select **Options-send** to resend the message.

## Templates

This folder contains predefined templates for multimedia messages. To compose a new message using a template:

1. In the standby mode, select **Menu-Messages-Text and multimedia- Templates**. Your templates appear in a list.
2. Highlight the desired template and press the **OK key**.
3. Compose your message. For more information please refer to "**Send New**". You can modify the message as desired.

## Drafts

This folder contains drafts of unfinished or unsend text and multimedia messages. From this folder, you can complete and resend your messages.

1. In the standby mode, select **Menu-Messages-Text and multimedia- Drafts**. Your draft messages appear in a list.
2. Highlight the desired draft message and press the **OK key** to edit. For more information please refer to "**Send New**". You can modify the draft message as desired.

## Saved

This folder contains saved text and multimedia messages. From this folder, you can complete and resend your messages. Saved messages will not automatically expire and must be deleted manually.

1. In the standby mode, select **Menu-Messages-Text and multimedia- Saved**. Your draft messages appear in a list.
2. To view the desired message, highlight it and select **OK key**.

## Settings

There are several options associated with messages. This menu allows you to customize the options to fit your preferences. In the standby mode, select **Menu-Messages-Text and multimedia-Settings** to access the settings menu. The following options are available:

### Msg. Settings

- ✧ **Save to SENT box:** Allows you to select the setting to the Sent box. Press **Left/Right** key to select and **OK key** to confirm.
  - Prompt: Prompts you to save a copy of the outgoing message.
  - Do not Save: Does not save a copy of any outgoing message.
  - Auto Save: Automatically saves a copy of the outgoing message in the Sent box.
- ✧ **Auto Delete Inbox:** Allows you to set the function **On** or **Off**. When on, the read messages are automatically deleted from your Inbox.
- ✧ **Default Entry Mode:** Allows you to set the default character input mode for new text messages. You can select between:

T9: is a predictive text entry mode.

NUMBER: is the standard numeric entry mode.

ALPHA: is the standard keypad text entry mode.

- ✧ **Auto Download:** Allows you to set the function **On** or **Off**. When on, the attachments for multimedia messages will be downloaded automatically to your phone.
- ✧ **Message Priority:** Allows you to change the priority of the message between **Normal**, **Low**, and **High**.
- ✧ **Delivery Report:** Allows you to set the function **On** or **Off**. When on, you will be notified when your message is received by the message's recipient.
- ✧ **Callback:** Allows you to change the callback number for this message. The default is your mobile phone number.
- ✧ **Signature:** Allows you to input and save your message signature. The saved signature will be added to the outgoing messages.

### Quick text Settings

To edit a quick text message, Highlight the desired one and press the **OK key**, edit the message and press the **OK key** to save.

### Memory info

This menu displays how much memory is available for the messages. Press the **OK key** to return.

### Web alert

Your phone is capable of receiving web alerts from online providers. For more details please consult your service provider.

1. In the standby mode, select **Menu-Messages-Web alerts**.
2. Follow the on-screen instructions.

### Email

Your phone is capable of accessing online emails. For more details please consult your service provider.

1. In the standby mode, select **Menu-Messages-Email**.
2. Select **New or Online Email and Follow** the on-screen instructions.

### short codes

Your mobile phone is capable of access pre –configured short code. For more details consult your service provider

1. In the standby mode, select **Menu-Messages-Short codes**.



2. Select the **Short code Lists** and follow the on-screen instructions.

## Browser

The Browser feature allows you to view internet content. You can view specially designed version of popular sites which include sports, weather, news, stock quotes etc.....as well as downloadable ringtones, wallpapers and games. When you launch the browser, the phone will automatically connect to the internet.

Notes: Wireless web is a network service. Rates and pricing vary according to the application. For more information please consult with your service provider.

Your phone may have some bookmarks loaded for sites not affiliated with Telus. Telus does not warrant or endorse these sites. If you choose to access them you should take the same precautions, for security or content, as you would with any other internet sites.

## Launching and Navigating the browser

In the standby mode, select **Menu-Browser**. You now are connected to your service provider's web page. Press **Left soft key [ Menu ]** to access the browser submenu.

1. **Home**: Select **Home** in the **Browser** menu and then press **OK key** to go to your homepage.
2. **Forward**: Allows you to go back and reload the forward web page.
3. **Go to URL**: Switch to the URL input screen.
4. **Bookmarks**: All accessed page addresses can be saved as bookmarks in your phone. This function allows you to view and edit frequently accessed sites.
  - ◇ **Open bookmarks**: Allows you access bookmark lists. If no item exists, Press **OK key [ Add ]-Add bookmark** to add a new one. To add a new folder, Select **Add folder**.
  - ◇ **Mark current site**:
5. **History**: This function allows you to view the browsed http address.
6. **Snapshots**: Allows you to take a new snapshot for the current web page or view the saved page.
7. **Use URL: Send message** allows you to send a message or e-mail with the URL, and **Show URL** is for viewing the URL details.
8. **Search**:

9. **Advanced:**

Restart browser: Clear cookies and restart the browser.

Multimedia: Select to the Open or close the display pictures and Background music when you browse the web page.

Clear: Allows you to clear the desired information.

Scroll mode: Set the scroll mode and scroll speed of the web page.

Send referrer: You can select the setting Enabled or Disenabled.

Connection time out: Set the duration of connection timeout (in seconds).

**Key press time out:** Set the duration of key press timeout.

Security:

10. **About:** Allows you to check for the product version and other details.

## Settings

This function displays the list of pages saved as an off-line file.

Select and then enter the respectively setting interface:

**Homepage:** View the homepage address.

**Network Setting:** Set IP address, APN, User ID, Password and so on. Please consult your network operator or service provider to get these parameters.

**Advanced settings:** You can select to close or open the display picture and the background music.

**Clear cache:** Clear all the memory information.

**Delete cookies:** Delete all the saved cookies.

**Certificates:** View the certificates provided in the browser

**Reset:** Restore the original Browser settings.

## Multimedia

### Get new

#### Music

Allows you to listen to your stored music by connecting to TELUS mobile music.

1. select **Music** to access the submenu.
- 2.

#### TV & Radio

Allows you to access and enjoy the service provider's contents.

1. In the standby mode, select **Menu-Multimedia-TV & Radio** to access .
2. Select the **OK key** to **Get New**. After a few seconds, you can see the Home Page.
3. Select the **OK key** to access TELUS mobile TV.

#### Ringtones

Allows you to download the new Ringtones.

4. In the standby mode, select **Menu-Multimedia-Ringtones** to access.
5. Select the **OK key** to **Get New**.

#### Wallpaper

Allows you to download new Wallpaper or set the desired picture as Wallpaper.

1. In the standby mode, select **Menu-Multimedia-Wallpaper** to access.
2. Select the **OK key** to **Get New**.
3. Scroll the **Down key** to the desired photo
  - ✧ **View**: View the highlighted picture.
  - ✧ **Delete**: Delete the highlighted picture
  - ✧ **Options-Set as**: Allows you to set the selected picture as wallpaper.
  - ✧ **Options-Delete all**: Delete all the pictures in this folder.

## Video

This function allows you to download new Video files.

1. In the standby mode, select **Menu-Multimedia-Video** to access.
2. Select the **OK key** to **Get New**.
3. Scroll the **Down key** to the desired video file.
  - ✧ Play: Allows you to play the video.
  - ✧ Delete: Highlight the file you want to delete and press the **Right soft key** to delete it.
  - ✧ Delete all: Delete all the video files.

## Camera

Allows you to view or take photos.

### Take photo and video

1. In the standby mode, select **Menu-Multimedia-Camera** to access the preview screen.
2. Select the **OK key [ Capture ]** to take a new photo. Use the **Scroll key** to set Brightness, Contrast, Focus and Effect. You can select to **Save, Send** or **Discard** the new photo.
3. Select the **Left soft key** to popup the **Options** submenu:
  - ✧ Camera flash: On / Off.
  - ✧ Self-timer: Off / 5s /10s.
  - ✧ Image size: 1280\*960 / 1024\*768 / 640\*480 / 320\*240.
  - ✧ Image quality: Super fine / Fine / Standard.
  - ✧ White balance: INCANDES.../ FLUORE.../ AUTO / DAYLIGHT.
  - ✧ Shutter sound: Sound1 / Sound2.
  - ✧ Save to: Handset memory / External memory.
  - ✧ Video camera: Switch to record video screen. Press the OK key to start.
4. Select the **Right soft key** to access the Gallery.

## My albums

In the standby mode, select **Menu-Multimedia-My albums** to access the submenu.

## Sound Albums

Allows you to play the sound files in gallery or received sound MMS.

1. **Sound Gallery:** Highlight your desired sound file, press the **Ok key** to play. Select the Left soft key to popup **Options** menu:
  - ✧ Set as: Set the highlighting picture as wallpaper or Contact avatar.
  - ✧ Send: Send the pictures Via MMS or Blue Tooth.
  - ✧ Move: Move the pictures
  - ✧ Delete:
  - ✧ Delete all:
  - ✧ Rename:
  - ✧ File info.
  - ✧ Mark all files:
2. **Sound MMS:** Play the received sound mms.

## Photo album

This function allows you to view the pictures stored in the phone.

1. **Photo Gallery:** Highlight your desired photo, press the **Ok key** to view. Select the **Left soft key** to popup the **Options** submenu:
  - ✧ Set as: Set the highlighting picture as wallpaper or Contact avatar.
  - ✧ Send: Send the pictures Via MMS or Blue Tooth.
  - ✧ **Move:** Move the pictures from your phone to MMC or in inverse.
  - ✧ Delete: Delete the selected picture.
  - ✧ Delete all: Delete all the pictures in this folder.
  - ✧ Rename: Rename the selected video.
  - ✧ File info. : Check for the details of the photo.
  - ✧ Mark all files:
2. **Photo MMS:** Play the received sound mms.

## Video album

This function allows you to view the videos stored in your phone.

1. **Photo Gallery:** Scroll the **Down key** and highlight your desired file, press the **Ok key [ play ]** to view. Select the **Left soft key** to popup the **Options** submenu:

- ✧ Send: Send the video Via MMS or Blue Tooth.
- ✧ Move: Move the video from your phone to MMC or in inverse.
- ✧ Delete: Delete the selected picture.
- ✧ Delete all: Delete all the pictures in this folder.
- ✧ Rename: Rename the selected video.
- ✧ File info. : Check for the details of the video.
- ✧ Mark all files:

2. **Video MMS**: Play the received sound mms.

## Online album

Access the Online album.

## External Memory

Provides the folders for picture, Video, and Sound, when you insert the mini MMC card into your phone.

## Memory Info

Allows you to check for the memory details.

In the standby mode, select **Menu-Multimedia-Memory info** to access the submenu.

## Shop

You can use the Shop menu item to download music, ringtones, images, videos, games and other applications.

In the standby mode, select **Menu-Shop** to access and after few seconds, you see the homepage.

## Games

You can also use this menu to download new games and play games stored on your phone.

In the standby mode, select **Menu-Games-Get new**, and after few seconds, the browser will launch and take you to the download menu. Follow the instructions of the screen for information about online and downloadable games.

## Tools

Tools and applications provide helpful software applications to help you perform common functions, such as:

- ✧ Set an alarm so that the phone rings at a specific time such as to remind you of an appointment.
- ✧ Organize your schedule.
- ✧ Use your phone as a calculator for basic mathematical equations.
- ✧ View times in different part of the world.
- ✧ Get GPS service.
- ✧ Use your phone as a recorder for voice memo.

## Get new

You can download new tools and applications.

In the standby mode, select **Menu-Tools-Get new**, and after a few seconds, the browser will launch and take you to the download menu. Follow the instructions of the screen for information about new tools.

## GPS services

With GPS services, you can download new applications that use your phone's GPS features.

1. In the standby mode, select **Menu-Tools-GPS services**.
2. Highlight **Get new** then press the **OK key** and after a few seconds, the browser will launch and take you to the download menu.
3. Follow the instructions of the screen for information about GPS service.

Notes: Feature based on carrier network availability.

## Calculator

Your mobile phone comes with a built-in calculator.

1. In the standby mode, select **Menu-Tools-Calculator**.
2. Enter a number with the keypad.
3. Press the **Right soft key** to insert a decimal point.

4. Use the **Scroll key** to select a mathematical function:
  - ✧ Up key to plus.
  - ✧ Down key to subtract.
  - ✧ Left key to multiply.
  - ✧ Right key to divide.
5. Enter the next number with the keypad.
6. Press the **OK key** to view the result.

## Alarm clock

The alarm function allows you to set up multiple separate alarms.

Edit alarm:.

Set rest days:.

Delete all: Clear all settings of all the alarm clocks.

Select your desired alarm to configure in the alarm list. If there is no alarm, press **OK key** to add a new alarm.

Press **View** to view the selected alarm item.

## Add alarm

1. In the standby mode, select **Menu-Tools-Alarm clock**.
2. Press the **OK key [ Add ]** to add a new alarm.
3. Alarm type: **Daily / Workday / Weekday / Once**.
4. Alarm date: This menu is available only when the type is Once or weekday.
5. Alarm time: Enter the time for the alarm in hh:mm format.
6. Ringtone: Set the alarm sound as on or off.
7. Status: Enable or disable the current alarm.
8. Alarm remark: Enter the alarm prompt information.



9. Press the **OK key** to complete.

## Alarm Options

In the standby mode, select **Menu-Tools-Alarm clock-Options** to popup the alarm submenu:

- ✧ Edit alarm: Edit the saved alarm or add a new one.
- ✧ Set rest days: Scroll the **Up/Down key** to highlight, press **Select/Cancel** and then press **OK key** to change the rest day. The preset Workday Alarm will not ring at the defined rest day.
- ✧ Delete all: Delete all the preset alarms.

## Scheduler

Allows you to conveniently keep and access your agenda(s). Simply store your appointments and your phone will alert you with a reminder of your appointment.

In the standby mode, select **Menu-Tools-Alarm Scheduler** to access the entry lists of the current date.

1. Select **Right soft key** to Add a new entry.  
Meeting/Memo/Anniversary: Enter your meeting schedule information including Subject, location, Start time or date and so forth. Press the **OK key** to save.
2. Highlight your desired entry and press the **OK key** to view the details.
3. Press the **Left soft key** to popup the Options submenu:
  - ✧ Month view: Provide an overview of the selected month.
  - ✧ Go to date: Input the date then press **Select** to jump to a specific date.
  - ✧ Delete entry: Delete the selected entry. This function is available only when one entry is highlighted.
  - ✧ Settings: Customize the alarm tone and default view of scheduler.
  - ✧ Memory Info: Check for the memory information.

## Notepad

Your phone comes with a notepad that you can use to compose and store reminders and notes to help keep you organized.

1. In the standby mode, select **Menu-Tools-Notepad** to access.

2. If there is on entry exists, enter the text and save. Otherwise press the **Left soft key** to add a new note.
3. Enter up to 160 characters in the note using the keypad and press the **OK key** to save.

## EZ Tip Calc

This function allows you to quickly and easily calculate the amounts for a bill with the amount of the bill, the amount of the tip, and the number of people as variable.

1. In the standby mode, select **Menu-Tools-EZ Tip Calc** to access.
2. Follow the instructions on the screen then enter the bill amount and desired tip percentage using the keypad and the **Scroll key**. The correct tip will be calculated instantly.
3. If you're splitting the check, highlight **Split** and enter the number of people in your party. (An equal split of the bill will be calculated and displayed.)

## World clock

World clock displays what time in it is in twenty-four different time zones around the world together with one or more major cities, states, regions, or countries in one time zone.

1. In the standby mode, select **Menu-Tools-World clock** to access.
2. Press the **Left key** or **Right key** to display different time zones.

## Voice memo

You can use your phone to record brief memos to remind you of important events, phone numbers, or other items.

1. In the standby mode, select **Menu-Tools-Voice memo** to access.
2. Press the **OK key [Record]** to record a new voice memo.
3. To finish recording, Press the **OK key**. Then you can select to **Save to** or **Discard** the clip.

## Settings

You can customize your phone's display, sound, and other settings to the way you like it.

In the standby mode, select **Menu-Settings** to access settings interface. Highlight your desired submenu function and press the **OK key [Select]**.

## Sound

Options to customize various sounds for different occasion.

### Ringers

Different ringer types help you identify incoming calls and messages. You can assign ringer type to individual contacts entries, types of calls, and types of messages,

**Voice calls:** Allows you to set ringtones for different types of incoming calls.

1. In the standby mode, select **Menu-Settings-Ringers-Voice calls** to access the setting interface.
2. Scroll the **Up** or the **Down key** to highlight the desired item: **Caller ID/Unknown calls/Roaming**.
3. Press the **Right soft key [ Modify]** and then select one ringer, press the **OK key** to save.

**Messages:** Allows you to set ringtones for different types of messages.

1. In the standby mode, select **Menu-Settings-Ringers-Messages** to access the setting interface.
2. Scroll the **Up** or the **Down key** to highlight the desired item: **Voice mail/Text and multimedia/Web alerts/Reminder**.
3. Press the **Right soft key [ Modify]** and then select one ringer, press the **OK key** to save.

### Keypad

In the standby mode, select **Menu-Settings-Keypad** to access the setting interface. Scroll the **Up** or the **Down key** to highlight the desired item: **Keypad sound / DTMF length**. Then Scroll the **Left** or the **Right key** to select, press the **OK key** to save.

### Volume

Allows you to change volume settings.

In the standby mode, select **Menu-Settings-Volume** to access the setting interface. Scroll the **Up** or the **Down key** to highlight the desired item: **Meeting silent mode / Master / Earpiece / Power on/off**. Then Scroll the **Left** or the **Right key** to select, press the **OK key** to save.

## Alerts

Allows you to change the alerts settings.

In the standby mode, select **Menu-Settings-Alerts** to access the setting interface. Scroll the **Up** or the **Down key** to highlight the desired item: **Service change / Minute beep / Call connect / Call lost / No service**. Then Scroll the **Left** or the **Right key** to select, press the **OK key** to save.

## Display

Options to customize your mobile phone's display screen.

In the standby mode, select **Menu-Settings-Display** to access the setting interface. Scroll the **Up** or the **Down key** to highlight the desired item: **Banner / Wallpaper / language / Back light / Key pad light / Clock format / Menu stile / Dialing Font**. Then Scroll the **Left** or the **Right key** to select, press the **OK key** to save.

## Games/Tools

### Backlight settings

This menu allows you to set the duration for illuminating the backlight.

1. In the standby mode, select **Menu-Settings-Games/Tools-Backlight settings** to access the setting interface.
2. Scroll the **Up** or the **Down key** to highlight the desired one: **7 Seconds / 15 Seconds / Always on / Always off**. Press the **OK key** to confirm.

### Volume

This function allows you to set volume settings.

1. In the standby mode, select **Menu-Settings-Games/Volume** to access the setting interface.
2. Scroll the **Up** or the **Down key** to highlight the desired one: **Off / Volume level 1/2/3/4**. Press the **OK key** to confirm.

### Notifications

This function allows you to set notification settings.

1. In the standby mode, select **Menu-Settings-Games/Notifications** to access the setting interface.
2. Scroll the **Up** or the **Down key** to highlight the desired item: **Voice mail / Messages / Web alerts**. Then Scroll the **Left** or the **Right key** to select, press the **OK key** to save.

## Memory info

Shows the memory details of your phone.

## Others

### Nav. Key Shortcuts

Assign a shortcut to your favorite and most frequently used function. Select it from the list, and then access it directly by pressing the

**Left key** or the **Right key** in the standby mode.

1. In the standby mode, select **Menu-Settings-Others**.
2. Highlight the Select **Nav. Key Shortcuts** menu and press the **OK key**.
3. Select a menu and press the **OK key**.
4. Scroll the **Up/ Down** key to appoint one favorite function to the selected scroll key.

### Call setup

In the standby mode, select **Menu-Settings-Others**. Highlight the **Call setup** menu and press the **OK key**.

#### **Call answer**

Allows you to determine how to handle an answered call. Scroll the **Left** or **Right key** to select a setting ,then press the **OK key** to save.

#### **Auto answer**

Allows you to set the length of the time before the phone automatically answers a call. This feature is intended for use when your phone is connected to an optional hands free car kit or head set.

Scroll the **Left key** or **Right key** to select a setting, then press the **OK key** to save.

#### **Auto redial**

When enabled, the Auto redial option causes the phone to make an appointed time attempts to redial a phone number after an unsuccessful call.

Scroll the **Left key** or **Right key** to select **On/Off**, then press the **OK key** to save.

### **Language**

Your phone can display text in English or French. Language selection changes all menus and voice message settings.

Scroll the **Up key** or **Down key** to choose between **English** and **French**. Press the **OK key** to save.

### **TTY Mode**

Your phone is TTY compatible device. Connect the TTY equipment to the headset jack, which is located on the right side of the phone.

TTY: Text Telephone. (or Teletypewriter for Deaf)

Scroll the **Up key** or **Down key** to choose between the settings:

- ◇ TTY Full: Users who can not talk and hear send and receive a text message through TTY equipment.
- ◇ TTY + Talk: Users who can talk but can not hear receive a text message and send voice through TTY equipment.
- ◇ TTY + Hear: Users who can hear but can not talk send a text message and receive voice through TTY equipment.
- ◇ TTY off: Normal users send and receive without TTY equipment.

### **Connecting TTY Equipment and a Terminal**

1. Connect a TTY cable to TTY connection on the terminal. (TTY connection location is the same as the hands free ear jack)
2. Enter the phone menu and set up the desired TTY mode. (For a TTY mode, see the following)
3. After setting a TTY mode, check the LCD screen of the phone for the TTY icon.
4. Connect the TTY equipment to the power source and turn it on.
5. Make a phone connection to the desired number.
6. When connection is made, use the TTY equipment to type in and send a text message or send voice.
7. The voice or text message from the receiver and displays on the TTY equipment display.

### **PC Connection**

Allows you to select the data port.

Scroll the **Up/Down key** to select a setting, then press the **OK key**: USB/ RS-232C/ Bluetooth / Closed.

### **Memory info**

Shows you the memory information of the phone.

## Bluetooth

Your mobile phone is compatible with devices that support the Bluetooth headset and hands-free profile(s). You may create and store 20 pairings within the phone and connect to one device at a time. the approximate communication range for Bluetooth wireless technology is up to 30 feet(10 meters).

### Bluetooth settings

Select an option to change:

- ✧ Bluetooth: Select On or Off to enable or disable Bluetooth support.
- ✧ Discoverable Mode: Select On for 60 seconds to let other devices connect to your phone for the next minute, Otherwise select Off.
- ✧ Device name: Type in the name of your phone as it will appear to other Bluetooth devices.
- ✧ Address: Shows you the Bluetooth address.
- ✧ Device Type:
- ✧ Support Profiles:
- ✧ Link Sound: Set the Ringer On of Off.

### Bluetooth device

## GPS

Your phone's GPS feature enables service provider to locate your position for emergency or other services.

1. In the standby mode, select **Menu-Settings-GPS** to access.
2. Select an option to change:
  - ✧ GPS status: To enable GPS tracking for your phone to select On, to disable GPS tracking for everything except emergencies, select Emergency only.
  - ✧ GPS privacy: Configure how devices track your phone, **Restricted, Unrestricted, By permission.**

## System

Options for specific system network settings.

### Phone info

The phone info menu provides you with specific information pertaining to your phone model.

1. In the standby mode, select **Menu-Settings-System-Phone info** to access.
2. Select an option:
  - ✧ My number: Allows you to view your phone number.
  - ✧ W version: Allows you to view the SW Version, HW version, PRL version and Browser version
  - ✧ Serving system: Identifies the channel number of a system that is served and a SID Number, This information is only for technical support.
  - ✧ con glossary: Allows you to view all the icons and their meanings.

## System

The System menu allows you to designate specific system network settings.

3. In the standby mode, select **Menu-Settings-System-System** to access.
4. Select an option:
  - ✧ Set mode: Allows you to set up the phone producer's management environment. Leave the default setting unless you want to alter the system selection as instructed by your service provider.
  - ✧ Set NAM: Allows you to select the phone's NAM ( Number Assignment Mobile) if the phone is registered with multiple service providers.

## Security

Allows you to secure the phone electronically. Phone lock code is needed when enter this menu. The default of security code is 0000

### Lock Phone

This function keeps your phone from unauthorized use. Once the phone is locked, it is in restricted mode until the lock code is entered. You can receive phone calls and still make emergency calls. You can modify the lock code using the New Lock code within the Security menu.

1. In the standby mode, select **Menu-Settings-System-Security-Lock phone** to access.



2. Scroll the **Up/Down key** to select a setting then press the **OK key** to confirm.
  - ✧ Unlock: The phone is never locked.
  - ✧ Lock: The phone is always locked, when locked, you can only receive incoming calls or make emergency calls.
  - ✧ On power Up: The phone is locked when it is turned on.

### Change lock

Allows you to change to a new four-digit lock code.

1. In the standby mode, select **Menu-Settings-System-Security-Change lock** to access.
2. Enter the old four-digit password.
3. Input the new code(4-8).
4. Input the new code once again to confirm.

### Reset default

Allows you to set your phone to the factory default settings.

1. In the standby mode, select **Menu-Settings-System-Security-Reset default** to access.
2. **Yes** to confirm and **No** to quit.

### Open/Close Airplane Mode

Airplane Mode allows you to use many of your phone's features, such as Games, Notepad, Voice Memos, etc., when you are in airplane or in any other area where making or receiving calls or data is prohibited, When your phone is Airplane Mode, it can not send or receive any calls or access online information.

In the standby mode, select **Menu-Settings-Open/Close Airplane Mode** to access.

## Text Input

You can input and edit your banner, Schedule Contacts and Messages.

### Overview

Your mobile phone provides the following input methods: upper and lower case input, numeric input and predictive text input, punctuation mark or special characters input.

When you are in a field that allows characters to be entered, you will notice the text input mode indicator in the upper right corner of the display. Press # key to switch between different input mode.

#### ABC and abc mode

Use the number key from **2** to **9** to enter your text.

Press the key labeled with the required letter

Once for the first letter

Twice for the second letter

And so on

Press and hold the key to enter the number.

To insert a space, press **key 0** once. To delete letters, press **Clear key** to clear the display.

If the next letter is located on the same key as the present one, wait until the cursor appears or press **Right key** to end the time-out period, and enter the letter.

The most common punctuation marks are available under key 1, press **1** key repeatedly to reach the desired punctuation mark. Press \* key to open a list of special characters, use Scroll keys to move through the list, and press **OK key** to select a character.

#### 123 mode

The 123 mode enables you to enter numbers in a text message.

Press the keys corresponding to the required digits.

#### Predictive text input

You can enter any letter with a single key press. Predictive text input is based on a built-in dictionary.

To write the desired word, press the keys from key 2 to key 9. Press each key only once for one letter. For example, to write "book", press **2** key for b, **6** key for o, **5** key for k.

When you finish writing the word and it is correct, press **OK key** to confirm it. If the word is not correct, press Scroll keys to view the matching words the dictionary has found.

#### Character Chart

Refer to the table below for more information on the characters available using the keys.

Key Functions

key	Corresponding Characters
Left soft key	Press to scroll access the
1	1 and some common symbols
2	ABCabc2
3	DEFdef3
4	GHIghi4
5	JKLjkl5
6	MNOmno6
7	PQRSpqrs7
8	TUVtuv8
9	WXYZwxyz9
0	Space 0
* key	Press * key to bring out symbol entering
# key	Switch among different input modes
Up/Down key	Roll the cursor up/down
Left/Right key	Roll the cursor left/right
OK key	Execute prompts that appear in the lower middle of the screen directly above it
End key	Exit

## Troubleshooting

If you encounter a problem with your phone, first refer to this Troubleshooting Guide before contacting your service provider.

Symptom	Resolution
Enter PIN" is shown when the phone is switched on.	Input the PIN or input the new PIN if you have changed the code. The code can be set "off" if you do not want to input.
"Insert UIM" is shown when the phone is switched on	Turn off your phone and make sure that you have inserted a valid UIM card.
"Enter password" is shown when the phone is switched on	Enter the handset lock code or the new code if you have changed it. The code can be set "off" if you do not want to input. (Please refer to Section "Security Settings".)
No key tone when pressing keys.	Check the key tone setting in the profile.
No incoming ring tone.	Check the ringing tone and ringing volume settings in the profile
No alarm tone when the reminder time reaches	Check the profile setting and the alarm ring setting
A phone number cannot be dialed	Check whether call restriction is set to the number. Please refer to Section "Call Barring".
Short message cannot be sent.	Check the SMS center setting in the SMS-Settings menu
Some menus related to voice setting couldn't be used	Check the profile settings
Why does the battery get shorter in standby mode?	The battery is worn out. As time passed, the battery life gradually becomes shorter. If battery lasts about the amount of time as when first purchased, it's time to purchase a new battery
Why does the battery run out so quickly during normal use?	It is due to the user environment or a large number of calls or weak signal
Why does the handset get warm up?	The phone may get hot when there is a very long call duration or when using the browser. This has no effect the life of the product or performance

## Annex Glossary

**CDMA-** Code Division multiple access.

**1x-EVDO-** Evaluation Data Only or Evaluation Data Optimized for cdma2000 1x.

**GPS-** Global position system.

**MMS (Multimedia Message Service) -** A message service for the handset environment, that allows videos, pictures, audio files and text to be sent between phones and dependent on network provider support, to email addresses

**BREW-** Binary Runtime Environment for Wireless.

**DTMF-** Dual—tone multi-frequency.

**Roaming -** Use of your phone when you are outside your home area, when traveling for example.