

Legal Information

Copyright © 2009 ZTE CORPORATION

All Rights Reserved

Your mobile phone is made by ZTE CORPORATION.

No part of this manual may be reproduced or transmitted in any form or by any means without prior written consent of ZTE CORPORATION.

Trademarks

ZTE and the ZTE logos are trademarks of ZTE CORPORATION.

Notice

The information in this manual is subject to change without notice. Every effort has been made in the preparation of this manual to ensure accuracy of the contents, but all statements, information, and recommendations in this manual do not constitute a warranty of any kind, expressed or implied. Please read the safety precautions carefully to ensure the correct and safe use of your mobile phone. For detailed information, refer to the section “Safety Precautions”.

ZTE CORPORATION Address:

ZTE Plaza, Keji Road South, Hi-tech Industrial Park, Nanshan District, Shenzhen, P. R. China

Postal Code: 518057

Website: <http://www.zte.com.cn>

Release: V1.0.0

Security

- To protect your mobile phone from illegal use, take the security measures as follows:
 - Set PIN codes of the SIM card.
 - Set handset lock code.
 - Set call restrictions.

Safety Precautions

This section includes some important information on safe and efficient operation. Please read this information before using the phone.

Operational Precautions

- Please use your phone properly. When making or receiving a call, please hold your phone as holding a wireline telephone. Make sure that the phone is at least one inch (about two point five centimeters) from your body when transmitting.
 - Do not touch the antenna when the phone is in use. Touching the antenna area affects call quality and may cause the phone to operate at a higher power level than needed.
 - Some people may be susceptible to epileptic seizures or blackouts when exposed to flashing lights, such as when watching television or playing video games. If you have experienced seizures or blackouts, or if you have a family history of such occurrences, please consult your doctor before playing video games on your phone or enabling a flashing-light feature on your phone. (The flashing-light feature is not available on all products.)
-

- Keep the phone out of the reach of small children. The phone may cause injury if used as a toy.

Precautions While Driving

- Please pay attention to the traffic safety. Check the laws and regulations on the use of your phone in the area where you drive. Always obey them.
- Use hands-free function of the phone, if available.
- Pull off the road and park before making or answering a call if conditions require.

Precautions for Medical Devices and Facilities

- When using your phone near pacemakers, please always keep the phone more than eight inches (about twenty centimeters) from the pacemaker when the phone is switched on. Do not carry the phone in the breast pocket. Use the ear opposite the pacemaker to minimize the potential for interference. Switch off the phone immediately if necessary.
 - Some phones may interfere with some hearing aids. In the event of such interference, you may consult your hearing aids manufacturer to discuss alternatives.
 - If you use any other personal medical device, please consult the manufacturer of your device to determine if it is adequately shielded from RF energy.
 - In those facilities with special demand, such as hospital or health care facilities, please pay attention to the restriction on the use of mobile phone. Switch off your phone if required.
-

Mobile Phone

- Please use original accessories or accessories approved by the phone manufacturer. Using any unauthorized accessories may affect your mobile phone's performance, damage your phone or even cause danger to your body and violate related local regulations about telecom terminals.
- Turn off your phone before you clean it. Use a damp or anti-static cloth to clean the phone. Do not use a dry cloth or electrostatically charged cloth. Do not use chemical or abrasive cleaners as these could damage the phone.
- As your mobile phone can produce electromagnetic field, do not place it near magnetic items such as computer disks.
- Using the phone near electrical appliances such as TV, telephone, radio and personal computer can cause interference.
- Do not expose your mobile phone to direct sunlight or store it in hot areas. High temperatures can shorten the life of electronic devices.
- Keep your phone dry. Any liquid may damage your phone.
- Do not drop, knock or harshly treat the phone. Rough handling can break internal circuit boards.
- Do not connect the phone with any incompatible enhancement.
- Do not attempt to disassemble the mobile phone or battery.
- Do not store the phone with flammable or explosive articles.
- Do not charge the mobile phone without battery.

Precautions for Potentially Explosive Atmospheres

- Switch off your phone prior to entering any area with
-

potentially explosive atmospheres, such as fueling areas, fuel or chemical transfer or storage facilities.

- Do not remove, install, or charge batteries in such areas. Spark in a potentially explosive atmosphere can cause an explosion or fire resulting in bodily injury or even death.
- To avoid possible interference with blasting operations, switch off your phone when you are near electrical blasting caps, in a blasting area, or in areas posted “Turn off electronic devices.” Obey all signs and instructions.

Precautions for Electronic Devices

- Some electronic devices are susceptible to electromagnetic interference sent by mobile phone if inadequately shielded, such as electronic system of vehicles. Please consult the manufacturer of the device before using the phone if necessary.

Safety and General Use in Vehicles

- Safety airbag, brake, speed control system and oil eject system shouldn't be affected by wireless transmission. If you do meet problems above, please contact your automobile provider. Do not place your phone in the area over an airbag or in the airbag deployment area. Airbags inflate with great force. If a phone is placed in the airbag deployment area and the airbag inflates, the phone may be propelled with great force and cause serious injury to occupants of the vehicle.
 - Please turn off your mobile phone at a refueling point, and the same to the place where the use of two-way radio is prohibited.
-

Aircraft Safety

- Please turn off your mobile phone before the airplane takes off. In order to protect airplane's communication system from interference, it is forbidden to use mobile phone in flight. Safety regulations require you to have permission from a crew member to use your phone while the plane is on the ground.
- If the mobile phone has the function of automatic timing power-on, please check your alarm setting to make sure that your phone will not be automatically turned on during flight.

Battery Use

- Do not short-circuit the battery, as this can cause the unit to overheat or ignite.
 - Do not store battery in hot areas or throw it into fire. Otherwise, it will cause explosion.
 - Do not disassemble or refit the battery. Otherwise, it will cause liquid leakage, overheating, explosion and ignition of the battery.
 - Please store the battery in a cool dry place if you don't use it for a long period.
 - The battery can be recharged for hundreds of times, but it will eventually wear out. When the operating time (talk time and standby time) is noticeably shorter than normal, it is time to replace it with a new one.
 - Please stop using the charger and battery when they are damaged or show evidence of aging.
 - Return the worn-out battery to the provider or dispose of it in accordance with environment regulations. Do not
-

dispose of it in household rubbish.

- Please use original batteries or batteries approved by the phone manufacturer. Using any unauthorized battery may affect your handset performance or may cause danger of explosion, etc.

Warning: If the battery is damaged, do not discharge it. If the leakage does come into contact with the eyes or skin, wash thoroughly in clean water and consult a doctor.

Limitation of Liability

ZTE shall not be liable for any loss of profits or indirect, special, incidental or consequential damages resulting from or arising out of or in connection with using this product, whether or not ZTE had been advised, knew or should have known the possibility of such damages. The user should refer to the enclosed warranty card for full warranty and service information.

Health and safety information

Radio Frequency (RF) Energy

This model phone meets the government's requirements for exposure to radio waves.

This phone is designed and manufactured not to exceed the emission limits for exposure to radio frequency (RF) energy set by the Federal Communications Commission of the U.S. Government: The exposure standard for wireless mobile phones employs a unit of measurement known as the Specific Absorption Rate, or SAR. The SAR limit set by the FCC is 1.6W/kg. *Tests for SAR are conducted using standard operating positions accepted by the FCC with the phone transmitting at its highest certified power level in all

tested frequency bands. Although the SAR is determined at the highest certified power level, the actual SAR level of the phone while operating can be well below the maximum value. This is because the phone is designed to operate at multiple power levels so as to use only the power required to reach the network. In general, the closer you are to a wireless base station antenna, the lower the power output.

The highest SAR value for the model phone as reported to the FCC when tested for use at the ear is 1.12 W/kg and when worn on the body, as described in this user guide, is 0.473 W/kg (Body-worn measurements differ among phone models, depending upon available enhancements and FCC requirements.)

While there may be differences between the SAR levels of various phones and at various positions, they all meet the government requirement.

The FCC has granted an Equipment Authorization for this model phone with all reported SAR levels evaluated as in compliance with the FCC RF exposure guidelines. SAR information on this model phone is on file with the FCC and can be found under the Display Grant section of <http://www.fcc.gov/oet/fccid> after searching on **FCC ID: Q78-ZTEGS318**.

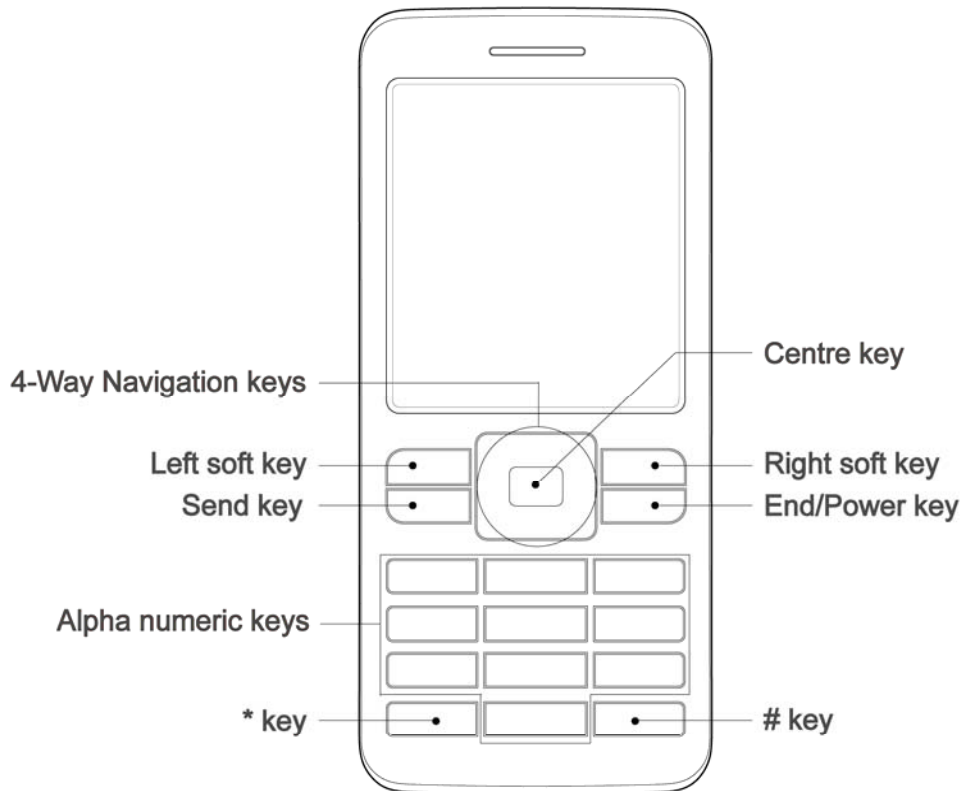
For body worn operation, this phone has been tested and meets the FCC RF exposure guidelines for use with an accessory that contains no metal and the positions the handset a minimum of 1.5 cm from the body. Use of other enhancements may not ensure compliance with FCC RF exposure guidelines. If you do not use a body-worn accessory and are not holding the phone at the ear, position the handset a minimum of 1.5 cm from your body when the phone is switched on.

This device complies with part 15 of the FCC Rules. Operation is subject to the condition that this device does not cause harmful interference.

Caution: Changes or modifications not expressly approved by the manufacturer could void the user's authority to operate the equipment.

Note: The pictures and icons shown in the manual are just schematic drawings for function demonstration. If they are inconsistent with your handset, please take your handset as the standard. If the inconsistency exists in the manual because of the handset function updating, please refer to the follow-up public information from ZTE CORPORATION.

Key Functions



Function	Description
Left soft key	Perform the function indicated at the left bottom of the screen.
Right soft key	Perform the function indicated at the right bottom of the screen.
Centre key	Confirm actions and make selections.

4-Way Navigation keys	These keys (UP, DOWN, LEFT and RIGHT) allow for navigation through menu options and quick accessing to some function menus. You can customize the fastkey settings of 4-Way Navigation keys in the standby mode.
Send key	Dial a phone number or answer a call, or view the call history.
End/Power key	Press to exit to the standby mode. Hold to switch on/off the phone.
Alpha numeric keys	Enter characters 0-9 and the alphabets from a-z.

Note: In this User Manual, “press a key” means to press the key and release it, while “hold a key” means to press the key for at least two seconds and then release it.

Hold * key to turn on/off the torchlight in the standby mode.

To lock/unlock the keypad, press the # key and then the * key.

Interface icons

Signal strength

Call diverting

Roaming

Vibration

Incoming message

Silent

Alarm clock set

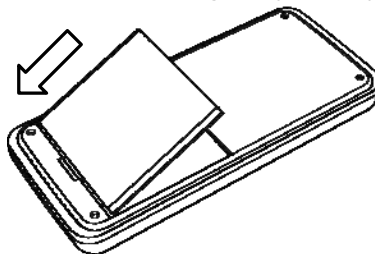
Battery status

Battery

The lithium ion battery of the mobile phone can be immediately used after unpacking.

Installing the battery

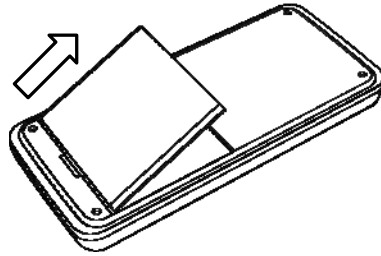
1. *Remove the battery cover.
2. Insert the battery by aligning the gold-colored contacts with the contacts in the battery slot.
3. Push down the upper section of the battery until it clicks into place.
4. Replace the battery cover and close it gently until you hear a click.



Push down the battery

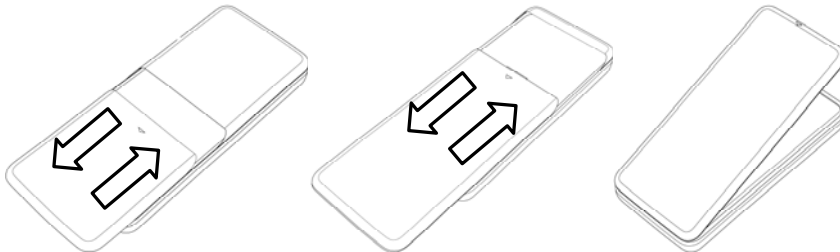
Removing the battery

1. Make sure that your mobile phone is switched off.
 2. *Remove the battery cover.
 3. Pull the battery up and remove it from the mobile phone.
-



Pull up the battery

* **Note:** The correct way to remove the battery cover varies with the model of the mobile phone. Please refer to the following diagrams.

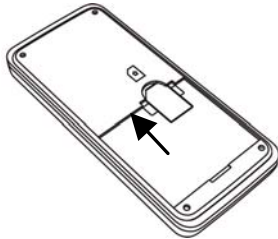


How to insert the SIM card

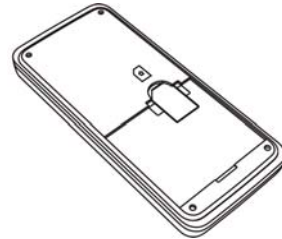
You want a mobile phone that is sophisticated yet easy to use and here it is in your hands! Naturally you are eager to start using it, but first you need to insert the SIM card.

Insert the SIM card as follows:

- Make sure that the phone is switched off and the charger is disconnected from the phone.
- Turn the phone over and remove the battery cover.
- Remove the battery if it is already installed.
- Hold your SIM card with the cut corner oriented as shown and then slide it into the card holder with the gold-colored contacts facing downward.
- Replace the battery first.
- Replace the battery cover.



Insert the SIM card



Pull out the SIM card

What is a SIM card?

Every mobile phone has a SIM card (Subscriber Identity Module). This is a micro-chip that holds your personal information such as names and phone numbers. Your phone won't work without it. If you already have contacts on your SIM card, they can be transferred in most cases.

How to charge the battery

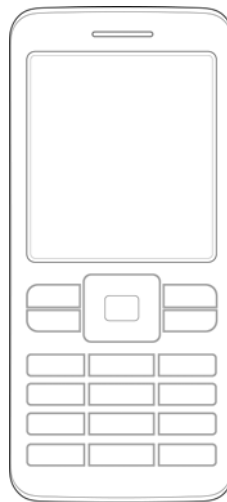
Your phone is powered by a rechargeable battery. For maximum battery performance, it is recommended that you first use up the

battery power and then charge it completely. A new battery's full performance is achieved only after three complete charge and discharge cycles.

- Connect your travel adapter to the side of your mobile phone as shown in the diagram.

Note: The side with arrow should be upright while connecting.

- Connect the other end of the travel adapter to the mains socket.
- If you charge the battery when the phone is switched off, the battery indicator appears with the bars moving from right to left. If you charge the battery when the phone is switched on, the battery indicator appears with a lightning bolt.
- When the battery is fully charged, disconnect the charger.



Insert

Powering on/ off your phone

Make sure that your SIM card is in your mobile phone and that the battery is charged.

Please hold the End/Power key to power on/off the phone. The phone will automatically search for the network.

Writing text

- Change input mode: Press the # key to change the input mode (input modes: Eng, *Abc, abc, ABC and 123).
 - Input Letters: In *Abc/abc/ABC mode, press the corresponding letter key till the letter appears.
 - Input Words: In Eng mode, input any letter with a single key press. Press each key only once for every letter. The word changes after each key stroke. Predictive text input is based on a built-in dictionary. When you have finished writing the word and it is correct, confirm it by pressing the 0 key or the Centre key. If the word is incorrect, press the Up/Down keys to view other matching words found in the dictionary. Pressing the Navigation keys moves the cursor.
 - Input Digits: In 123 mode, press digit key once to input a digit. In Eng mode, press the digit key, and select the number by pressing the Navigation keys. In *Abc/abc/ABC mode, constantly press the digit key until the number appears.
 - Input Symbol: Press the * key to enter a symbol. In *Abc/abc/ABC mode, constantly press the 1 key till the required
-

symbol (common symbols) appears.

- **Selecting Template:** Hold the * key to open Templates. Select the required template.
- **Input Space:** Press the 0 key to input space. It does not work in 123 mode.
- **Delete Character:** Press the Right soft key to clear a character. Hold the Right soft key to delete all characters and clear the display.
- **Move Cursor to Left or Right:** Press the Left/Right navigation keys to move the cursor to left or right.

***Note:** Abc mode is only available for certain models.

How to add people to your Contacts

There are some numbers that you may want to call again and again, so it makes sense to add these numbers to your contact list. You can then access these numbers quickly and easily.

- Enter Contacts menu.
 - Press the Left soft key [Options], and then select Add new contact.
 - Select to save the number to SIM card or Phone, and then enter the contact's phone number.
 - Press the Left soft key [OK] or the Centre key, then enter a name and confirm by pressing the Left soft key [OK] or the Centre key again.
 - You can also save a number right after you've made or received a phone call or a text message from someone who is not yet in
-

your contact list.

- To delete someone from your contact list, first select the name, then press the Left soft key [Options] and choose Delete.

How to make and receive calls

The most basic way to make a call is to input the number in the standby mode and press the Send key. You can also make a call from the contact list.

- To call someone: Enter Contacts menu. Use the Up/Down keys to find the name of the person you want to call. You can also type in the first letter of the name of the person you want to call, and press the Send key.
- To receive a call, press the Send key.
- To end a call, press the End/Power key.

Make sure that you are in an area with sufficient coverage to make calls. The strength of the network signal is indicated on the Status Bar of the screen.

How to send and receive messages

You can use your mobile phone to send and receive text messages.

1. Go to Menu→Messaging→New message.
2. Write your message. For more information on writing, see section 'Writing text'.
3. Press the Left soft key [Options] and select Send to one to send the message to one person.

To send to more than one person, select Send to contacts and select the names from the contact list.

4. Enter the recipient's phone number or select from Contacts. Then select OK to send the message.

Upon receiving a message, the mobile phone indicates with ringtone, prompt, or a new message icon.

1. Press the Left soft key [Select] to open the new message. You can also go to Inbox to read the message.
2. Use the Up/Down keys to read the message.
3. While the message is open, use the Left soft key [Options] to reply, delete, or forward the message. You can also call back to the sender or extract the sender's number.

How to set your phone

You can adjust various settings of your phone.

- Phone settings: Select language, edit your own phone number, set fastkey and select to turn on/off the automatic keypad locking function.
- Display settings: Select your favorite wallpaper and adjust the screen's contrast and brightness.
- Clock settings: Set date and time, and date format.
- Security settings: Security features protect you from illegal use of your phone and SIM card.

Note: You need to input the handset lock code to enter the security settings interface. The default lock code is 1234.

How to set your alarm

- Set alarm: Select Set alarm submenu, you can set the corresponding features of the alarm according to instructions:
-

alarm type (if required), date, time, and ringtone.

- List alarms: Select List alarms submenu, you can view, edit and delete the alarm clocks settings. You can also enable or disable the alarms.
- Clear all: Select Clear all to clear all the alarm clocks.
- Define rest day: Select Define rest day to set or change rest days of a week. Workday alarm will not ring on the defined rest day(s).

***FM Radio**

With the radio, you can search for radio channels, listen to them, and save them on your device. Note that the quality of the radio broadcast depends on the coverage of the radio station in that particular area. The wired headset works as an antenna, so always connect the headset when using the radio. When you receive an incoming call while listening to the radio, the radio will be turned off.

You can scan for channels automatically or tune them manually.

The channels can also be set by inputting valid frequencies.

To adjust the volume, press the Up/Down keys.

The channels can be stored in a channels list. Open the list to view the information of the saved channels.

* **Note:** FM radio is only available for certain models.
