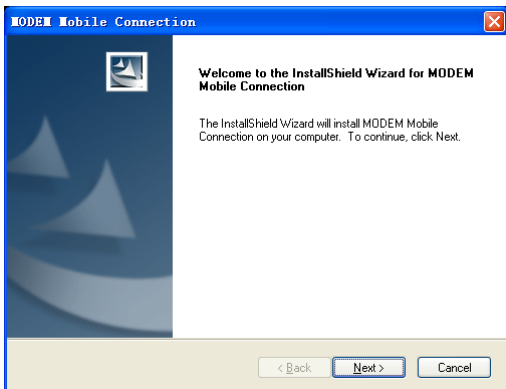


ZTE MODEM Mobile Connection
User Manual

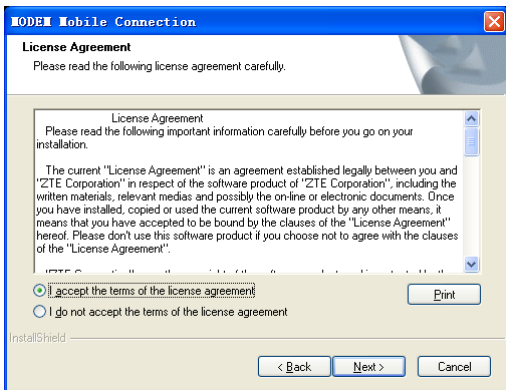
1 Software Installation

1.1 Installation Instruction

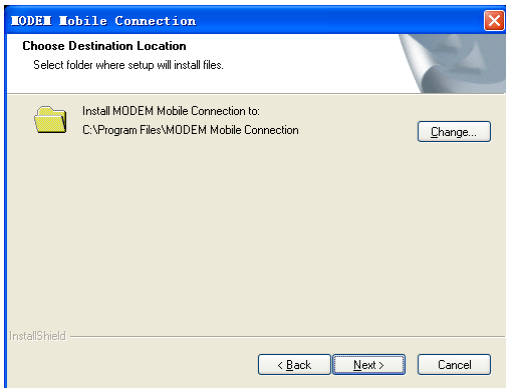
The following installation interface will show how to install the software.



- Recommend you to exit other programs, and then click **“Next”**.

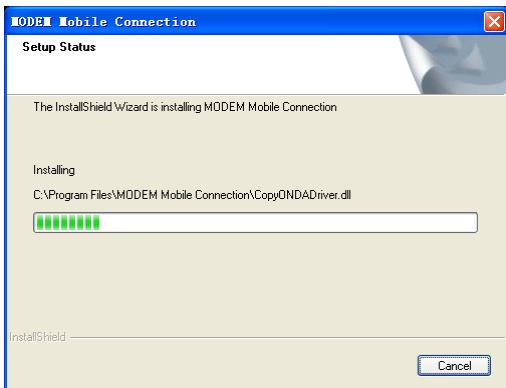


- Read the agreement carefully. If you agree, choose “I accept the terms of the license agreement”, and then click “Next”.

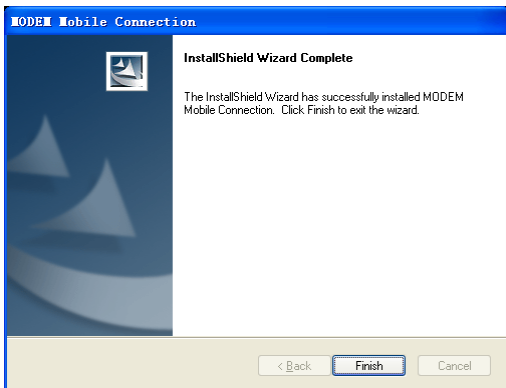


- Select the folder that you want to install the software by

pressing “**Change**”, and then click “**Next**”.



- The system show the installation progress, wait a minute and the following screen will show up:



- Click “**Finish**” to complete the installation.

Note: If you have problems with installation after the upper operation, please contact the service provider.

After the installation, select the “**Start → Programs**” and there will be a “**MODEM Mobile Connection**” program group, which includes “**MODEM Mobile Connection**” and “**MODEM Uninstall**”. There will be a Shortcut icon like below on the desktop.




1.2 Run the Application Software

After the modem is correctly connected, click the “**Start → Programs → MODEM Mobile Connection → MODEM Mobile Connection**” menu on the laptop or desktop PC to run the application software.

Or double click the shortcut icon, to run the application software.

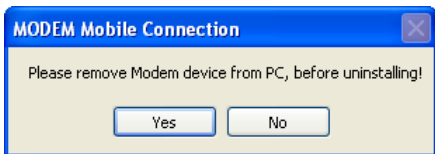
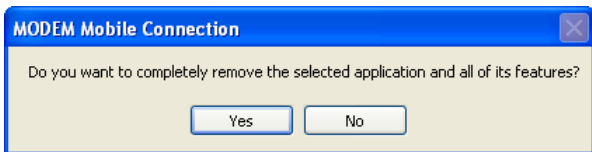


After modem initialized, main interface appears. When the standby icon  appears in the taskbar, the modem can work properly.

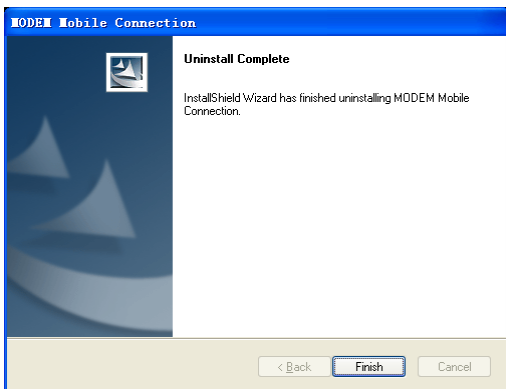
1.3 Software Uninstall

- Close the application program before the software uninstalls.
- Click “**Start → Programs → MODEM Mobile Connection**”

→ **MODEM Uninstall**” menu on the laptop or desktop PC.



- Click **“Yes”** according to the indication, then the system begins to uninstall programs.



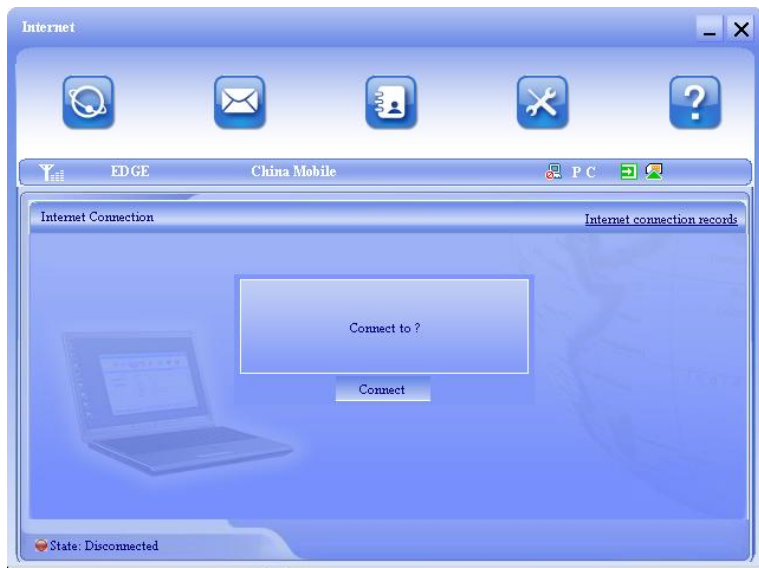
- Click **“Finish”** to complete the application software uninstall.

2 Functions & Operation

2.1 Interface introduction

2.1.1 Main Interface

The starting screen of the Device software is shown as the following:



The whole interface is divided into three parts. Related functions can be executed by operation in the related areas.

1. Function button area:

There will show various function button icons. Select different function button and it will carry out corresponding operation.



Internet: Connect to the Internet.



Short Message (SMS): Send SMS or read SMS.



PhoneBook: Save and view the different information of the contacts.









Settings: Set normal relative information for the modem.








Help: Show the help information.

2. System information area:

Show the system status and different kinds of tips.

Icon	Explanations
	The icon indicates the network signal intensity. There are 6 stages from none to the strongest.
	The icon indicates there are new SMS at present.
	The icon indicates the current status of Internet connection is not connected.
	The icon indicates the current status of Internet connection is already connected.
	Letter “ P ” means supporting packet-switch (P) service, letter “C” means supporting circuit-switch (C) service.
	SIM/USIM card is in status of roaming.

Icon	Explanations
	The icon indicates insert status of the modem. Green means it has been inserted into the computer.
	The icon indicates insert status of the modem. Red means it has not been inserted into the computer.
	The icon indicates insert status of the modem. Yellow means it has been inserted into the computer but in offline status.
	The icon indicates insert status of the SIM/USIM card to the modem. Green means the card has been inserted.
	The icon indicates insert status of the SIM/USIM card to the modem. Red means it has not been inserted.
EDGE	The icon indicates the current network type, i.e. EDGE or GPRS, HSDPA/HSUPA service.
China Mobile	Name of the current service provider.
Internet connection records	View related information for your internet operation, such as, user name, start time, disconnect time, duration, data received and data sent.

3. User Area:

Show the man-computer interaction information under various conditions.

2.1.2 Description of Mini Icons

When click the mini button, the software will minimize as an icon on the system taskbar. If connected to the Internet, the minimized software won't influence the download of data or receiving SMS. When the application window is minimized, the system icons will display on the taskbar. Double click the icon to resize the display.

1. Taskbar Icons Description:



The Device has been inserted into the computer.



The Device is not inserted into the computer.



The Device is offline.



UIM/SIM card is not inserted.



No network signal.



There is a new message.



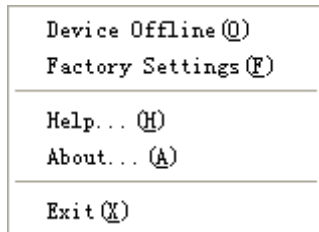
The Device is ready to connect to Internet.



The Internet is already connected.

2. The uses of Tray Icons:

Right Click the tray icons, the following menu will appear:



Device Offline/ Device Online: Pause/reusing the working of the modem. If connected Internet, you need disconnect the Internet first, and then select the Device Offline.

Factory Settings: Restore all the settings to the original values in the Device. This operation just affects the settings in the Device and do not change any software settings in the laptop or desktop PC.

Help: Enter the Device software help.

About: View the information of the application software and hardware versions.

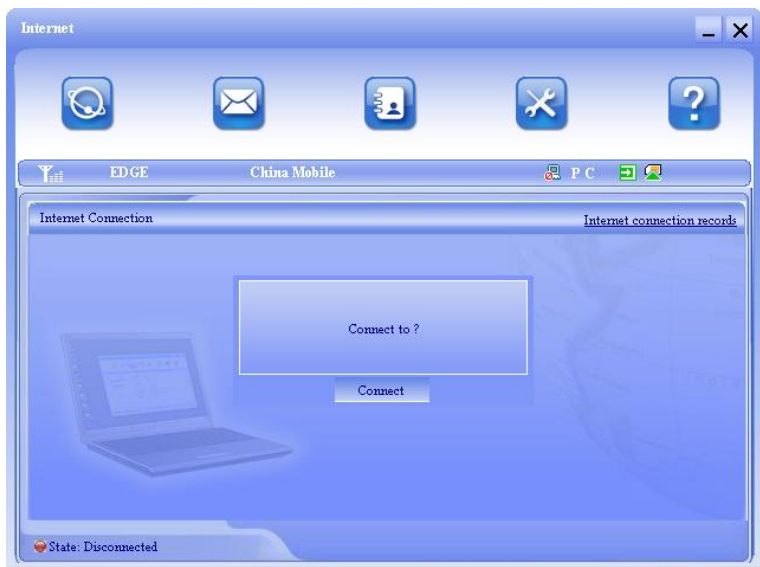
Exit: Close the software and stop the modem from working.

2.2 Connecting Internet

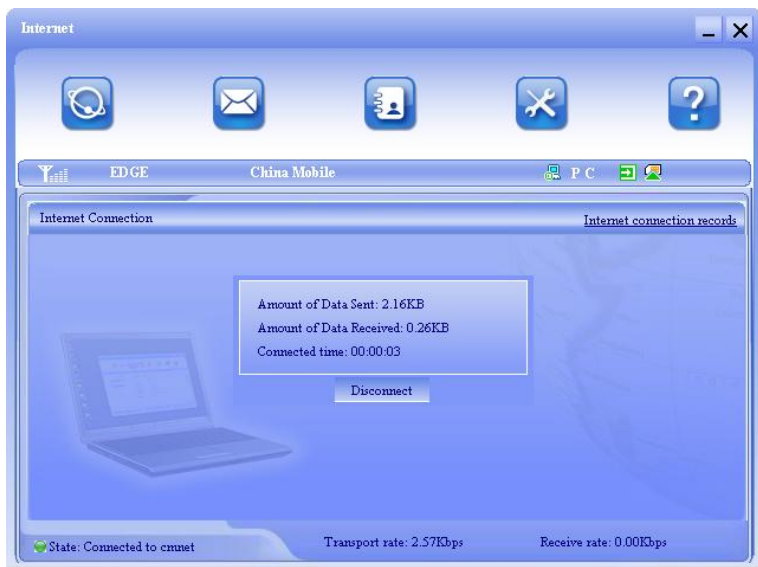
You can browse web pages after you have accessed to Internet with the help of modem, you can also receive SMS when surfing in the Internet.

1. Connect to the Internet:

Click the **Internet** icon. Then the system will ask you “**Connect to ?**”. Select “**Connect**”.



When connected, there is a status bar in the bottom of the user area which shows “State: connected to ...”, and the user area will show data amount, connected time and so on. Then you can access Internet and receive email etc through network.



You can click **“Disconnect”** to stop the connection when the **“Connect”** button becomes **“Disconnect”** button,

2. Internet connection records:

Click **“Internet connection records”** [Internet connection records](#) to check the log of Internet connection history.

The screenshot shows a window titled "Internet connection records" with a toolbar at the top containing icons for home, mail, contacts, settings, and help. Below the toolbar is a status bar showing "EDGE", "China Mobile", and "P C". The main area is a table with the following data:

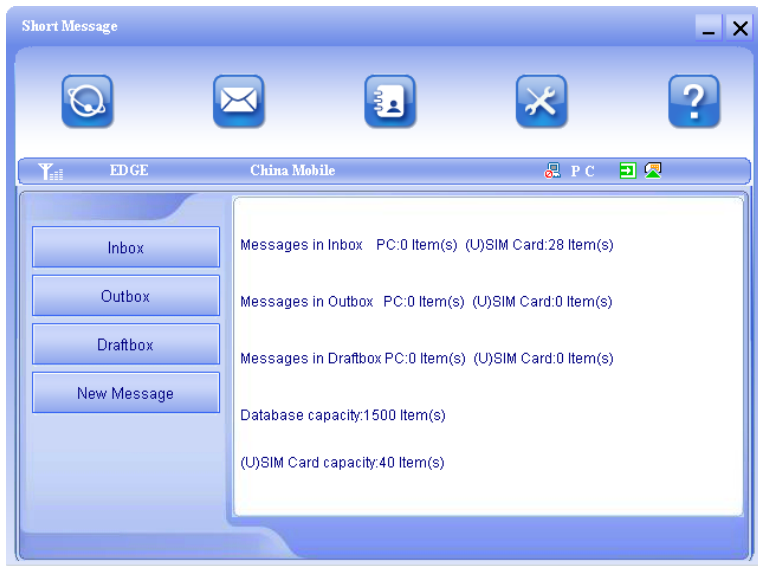
User Name	Starting time	Disconnect time	Duration	Data received	Data sent
	2008-07-17 10:42:06	2008-07-17 10:43:11	00:01:05	0.26KB	15.54KB

At the bottom of the window, there are summary statistics: "Total data: 15.80KB" and "Total time: 0:01:05". There are also three buttons: "Delete", "Clear", and "Cancel".

2.3 SMS

Note: To ensure that the Short Message can be used properly, at first, you should setup the correct Short Message center number. Refer to section “3.5.4 Message Settings”.

Click the “**Short Message**” icon to switch to the SMS interface and it will show the number of messages in the inbox, outbox and draftbox. The user can click icons of “**InBox**”, “**OutBox**”, “**DraftBox**” and “**New Message**” to enter relative interface.



InBox: Save the received messages.

OutBox: Save the successfully sent messages.

DraftBox: Save the editing SMS which haven't been sent. The drafts can only be saved in computer, not USIM/SIM.

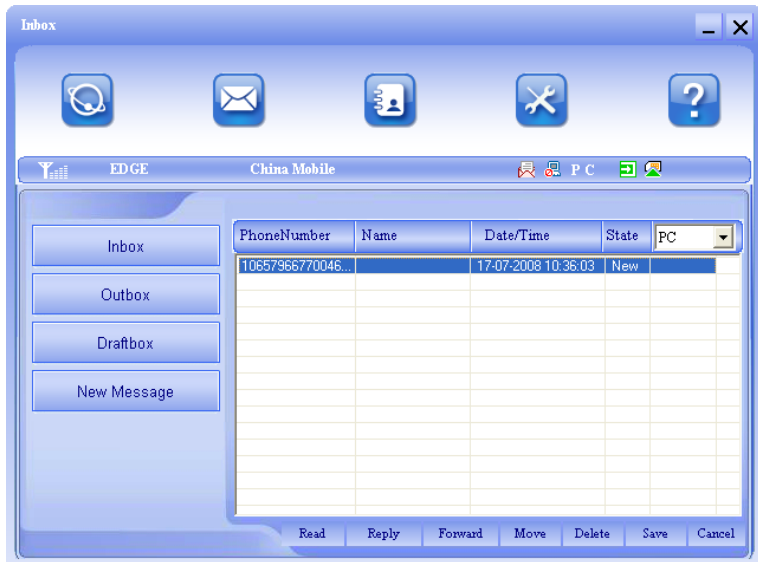
New Message: Write a new message.

For example: "Message in InBox PC : 2 Item(s) (U)SIM Card: 1 Item(s)" means: The PC side has 2 short messages and there is 1 short message in the InBox of the SIM card , "(U)SIM Card capability:40Item(s)" means the SIM card can hold 40 short messages. Different SIM/USIM cards will have different capacities. The modem will show the capacity automatically in usage, like the above "40". For more information, please consult your supplier.

2.3.1 Read Short Message

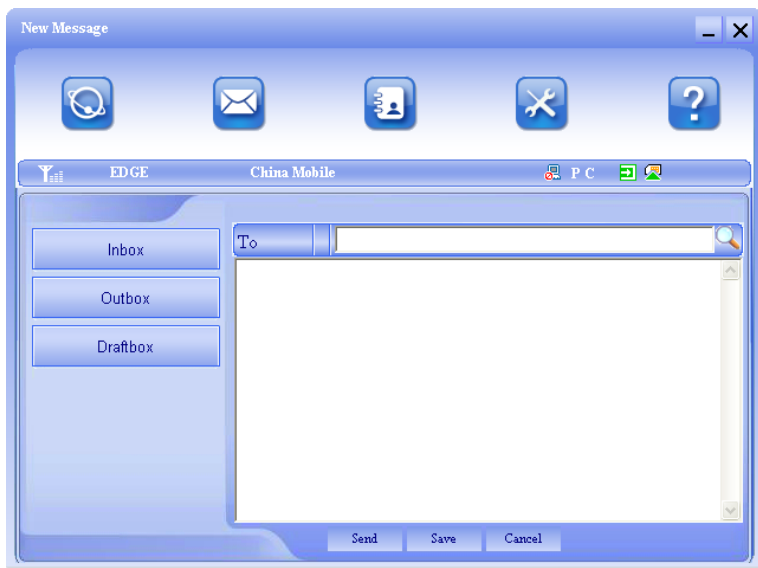
Click the **“Inbox”** button on the main interface or click new message icon on the system taskbar to read the SMS saved in the box.

You can use the buttons under the menu to execute reading, forwarding, deleting, saving contact functions and so on.



2.3.2 Create new message

Click **“New Message”** button to input the recipient’s number and message content.

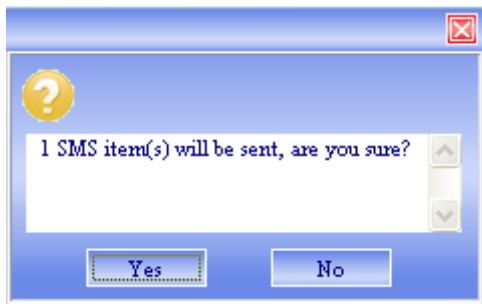


The recipient's number can be input directly or by entering the phonebook to select one/more/group records.

The recipient's amount can be one or more. Please use “;” to separate recipients.

The SMS content can include 160 individual English characters (including English symbols). There will show total characters on the interface.

Click “**Send**”, the prompt screen like bellow will appear on the interface.



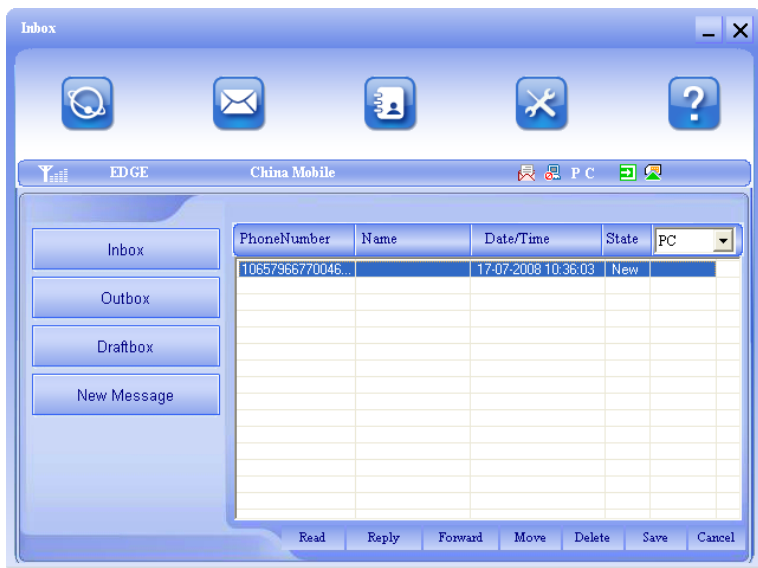
Select “**Yes**”, and then the edited short messages will be sent. After sent successfully, the SMS will be saved into outbox automatically. If send fails, it will be saved to the draft box automatically.

Send SMS while browse the web:

When surfing the Internet, if your network supports, you can send short messages at the same time. Click “**Short Message**” button icon, enter the short message interface to send short messages normally.

2.3.3 Operating Guide

Enter any of the **InBox/OutBox/DraftBox** to execute the following functions:



Read: Read all the information of short messages. (The content of short messages, sender's phone number, delivered date and time)

Reply: Reply short messages to the sender (Can't be executed in OutBox / DraftBox).

Forward: Send the short message to other recipients (Can't be executed in DraftBox)..

Move: Change the saving location of short messages between PC or USIM/SIM card (Can't be executed in DraftBox).

Delete: Delete the selected short messages.

Save: Save sender's number into the phonebook.

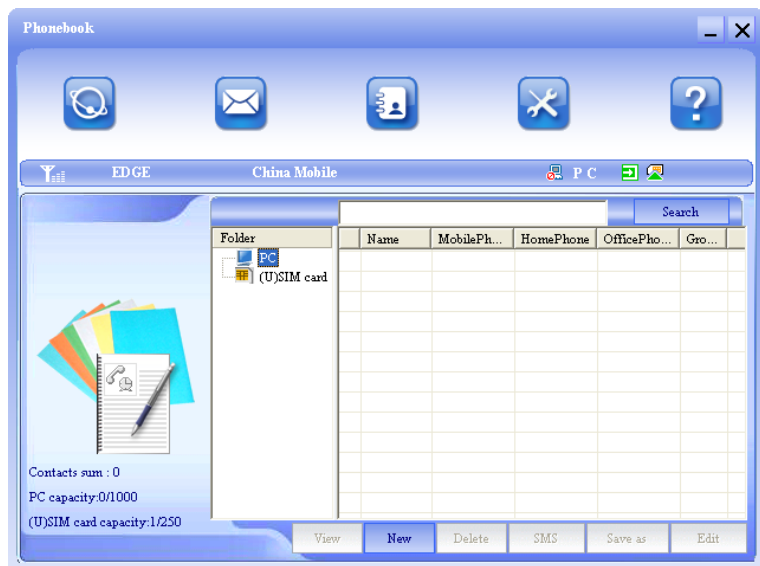
Cancel: Return to the SMS interface.

Make use of “**Ctrl**” or “**Shift**” key and click to choose several messages to execute simultaneously.

New message can not be received when the USIM/SIM card is full of short messages (Different USIM/SIM cards have different capacities). While new message can not be saved, the system will indicate the inbox is full and prompt user to clear the inbox at USIM/SIM card side.

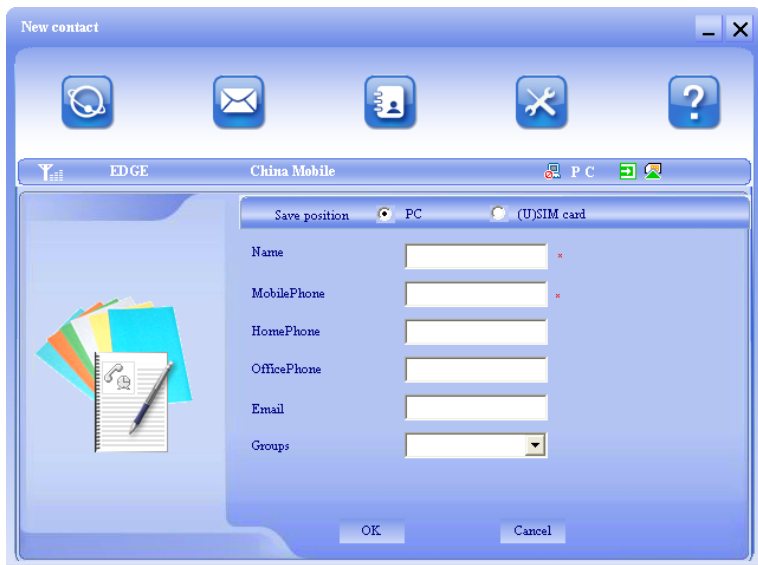
2.4 PhoneBook

Click the "PhoneBook" icon to access to the phonebook window, the phonebook information can be saved in the PC or SIM/USIM card and you can choose the save position. Each record includes contact name, mobile phone number, home phone number, office phone number, email and the group name which it belongs to.



2.4.1 Creating a new contact

- 1) Click **New** → **New Contact**.
- 2) Select **Save position** to decide where you want to save your contact, **PC** or **(U)SIM card**.
- 3) Input the name, phone number, Email address, etc. Then click **OK**.

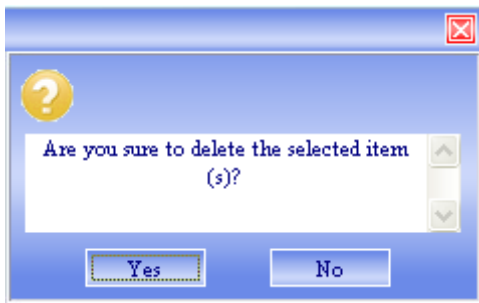


2.4.2 Modifying contacts

- 1) Select a contact and then double-click it or click **"Edit"**.
- 2) After the modification, click **"OK"**.

2.4.3 Deleting contacts

- 1) Select one or more contacts and then click “**Delete**”.
- 2) At the prompt, click “**Yes**”.



2.4.4 Sending SMS to a contact

- 1) Select one or more contacts and then click “**SMS**”.
- 2) You will access in the writing SMS window automatically, the selected contact mobile phone numbers will be listed in the receiver column.
- 3) Enter the contents of the message and then click “**Send**”.
- 4) At the prompt, click “**Yes**” to send the SMS.

2.4.5 Searching for a contact

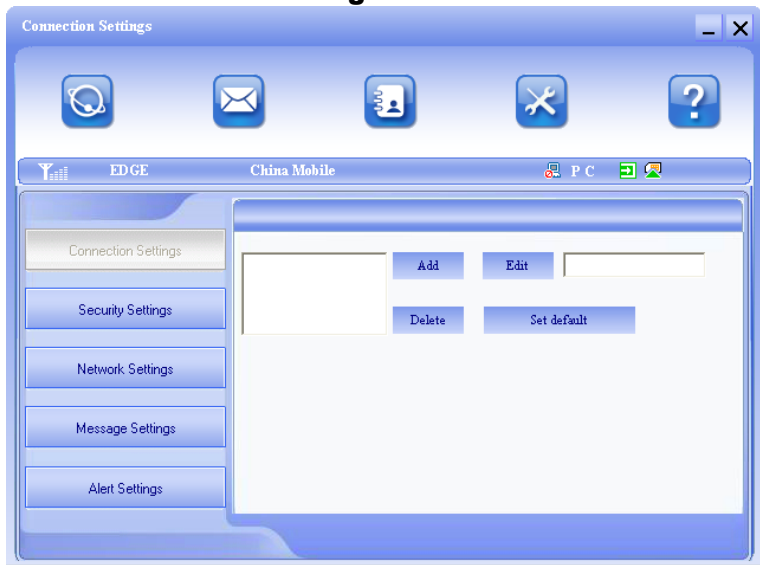
- 1) Enter the search conditions in the search condition blank.
- 2) Click **Search** begin searching.
- 3) The searching results will display in the contacts window.

2.5 Settings

Click “**Settings**” icon to switch to the settings interface. It includes: Connection settings, Security settings, Network settings, Message settings, Alert settings.

Note: all the necessary settings have been correctly saved in your Device. There is no need to change these default settings.

2.5.1 Connection Settings



To ensure that the modem can connect the Internet properly, you should configure the connection information first.

1. Button description

Add: Add new configuration file.

Delete: Delete the selected configuration file.

Edit: Edit the selected configuration file.

Set default: Select one configuration file from the list, and set it as the current using files.

2. Config File

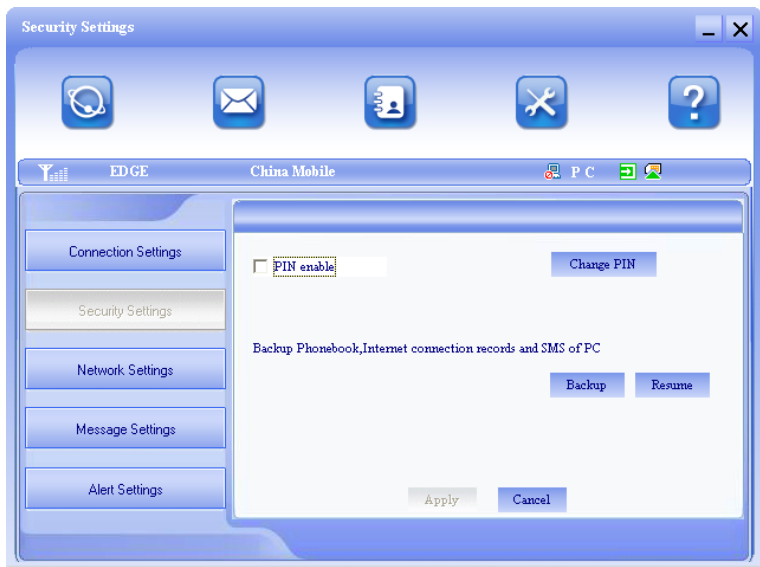
Click “Add” to add new connection information to the system. The “Config File” interface will appear:

The screenshot shows a blue-themed dialog box titled "Config File". It contains several input fields and control elements:

- Config Filename:** A text input field.
- Dial Number:** A text input field.
- User Name:** A text input field.
- Password:** A text input field.
- Save User Name and Password:** A checkbox.
- Ask for User Name and Password:** A checkbox.
- Obtain APN address automatically:** A radio button (selected).
- Use the following APN name:** A radio button.
- APN:** A text input field.
- PDP Type:** Radio buttons for IP (selected) and PPP.
- Authentication Mode:** Radio buttons for PAP (selected) and CHAP.
- Obtain DNS server address automatically:** A radio button (selected).
- Use the following DNS server address:** A radio button.
- Preferred DNS:** A text input field.
- Alternate DNS:** A text input field.
- Obtain PDP address automatically:** A radio button (selected).
- Use the following PDP address:** A radio button.
- Address:** A text input field.
- OK:** A button at the bottom left.
- Cancel:** A button at the bottom right.

The configuration information includes: Config Filename, Dial Number, User name, Password, APN, DNS, and PDP address. If network supports “Obtain server address automatically”, the modem can obtain the assigned IP information automatically. If network does not support it, you should input the proper address manually. Please consult the network supplier of SIM/USIM card for all above information. The configuration information may be various according to the different network suppliers and network types.

2.5.2 Security Settings



1. Enable the PIN Code

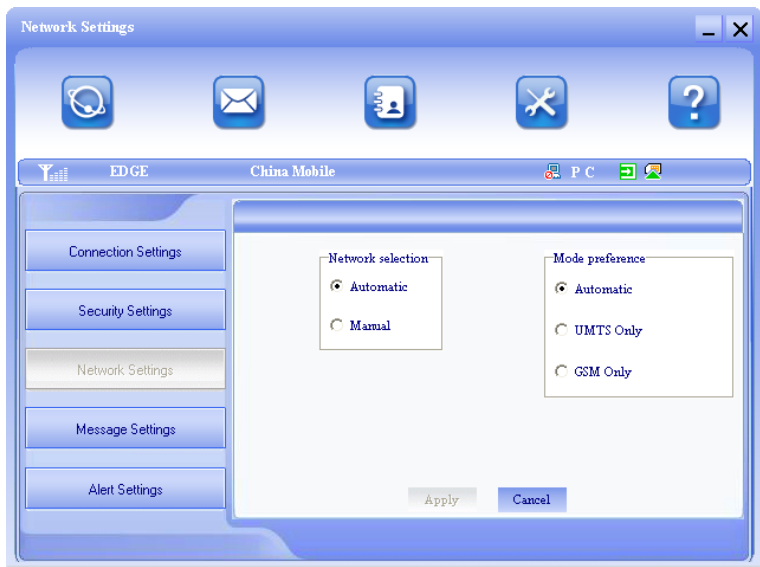
When “**PIN enable**” item is selected, please enter PIN code to use the modem and you can click “**Change PIN**” to modify the number.

2. Backup Phonebook, Internet connection records and SMS of PC

Click “**Backup**” to backup the Phonebook, SMS and Internet connection records in PC.

Click “**Resume**” to restore the backup data.

2.5.3 Network Settings



1. Select Network

Automatic: The system selects the network automatically by the user's selected rules and the network status.

Manual: The network is selected by users themselves.

2. Network Mode Select

Automatic: The system will search valid network automatically.

UMTS Only: The system will only search UMTS network.

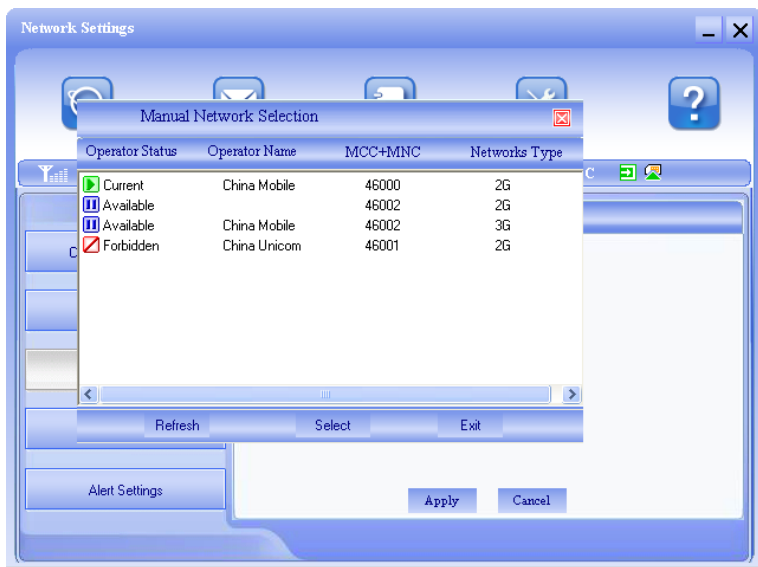
GSM Only: The system will only search GSM network.

3. Manual Select

When the “Manual” is selected, click the “Apply” button, pop-up the following window:

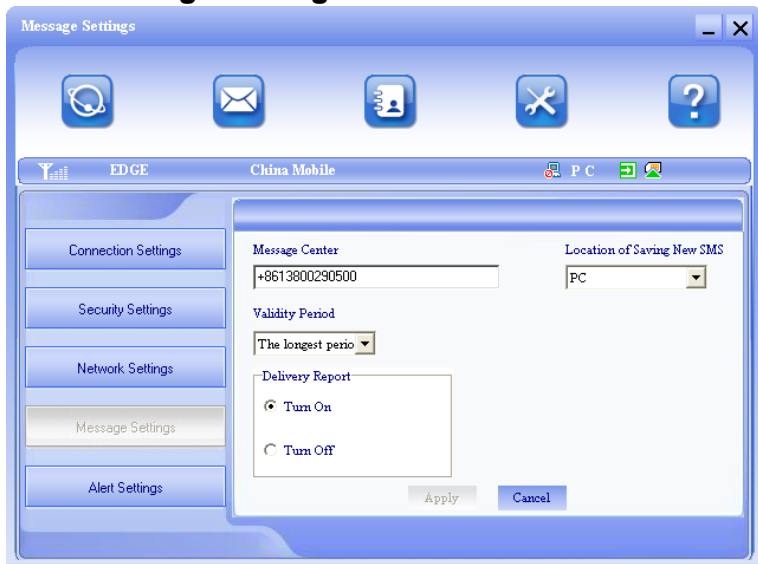


Wait a minute, the supplier list will show in the window and the suppliers with the blue or green icon can be selected. Select a proper network to connect.



Select the network that the supplier is utilized to serve your USIM/SIM and press “**Select**” to attach the network.

2.5.4 Message Settings



Message Center: Set the corresponding SMS center number. You must input the correct SMS center number to use the SMS properly and the number will be provided by the network supplier. Please enter the country code before the number.

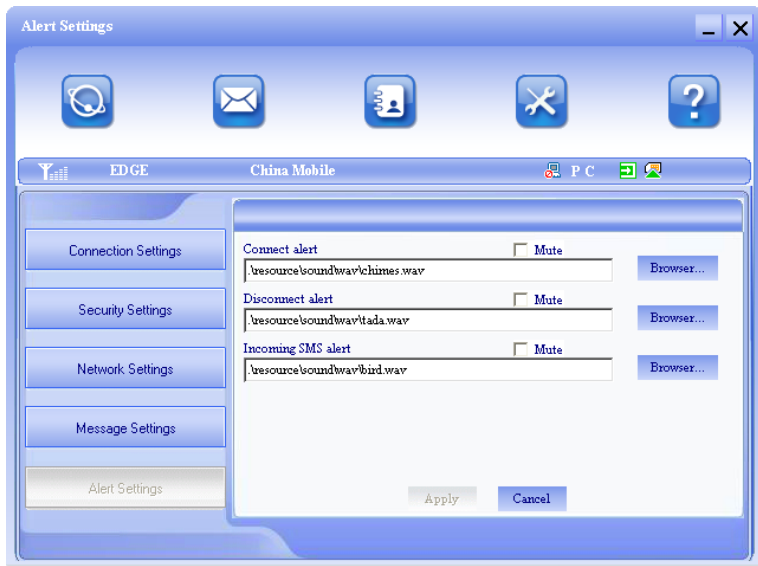
Validity period: Set the time limit for saving SMS in the network side. (This function needs network supports.) In option: 12 hours/A day/A week/The longest period. The default setting is the longest period permitted by the network.

Location of Saving New SMS: Select "Default" to save in location set by network. Select "(U)SIM Card" to save in USIM/SIM card; select "PC" to save in laptop or desktop PC.

Delivery Report: Set as "Turn On" or "Turn Off". When it is set as "Turn On", the network will inform you of the status for the

sent messages.

2.5.5 Alert settings



You can set “Connect alert, Disconnect alert and Incoming SMS alert” by yourself. These alerts will sound on the PC side. The audio file supports MP3、WAV、WMA and MIDI format. If you select “**Mute**”, you cannot hear corresponding alert.

2.6 Help

Click “Help” icon, and switch to the help interface. Under the help topic, you can get the Device information about function introductions, installation and usage guide, etc.

FCC Compliance

This device complies with part 15 of the FCC Rules. Operation is subject to the following two conditions: (1) This device may not cause harmful interference, and (2) this device must accept any interference received, including interference that may cause undesired operation.

Caution: Changes or modifications not expressly approved by the manufacturer could void the user's authority to operate the equipment.

NOTE: This equipment has been tested and found to comply with the limits for a Class B digital device, pursuant to part 15 of the FCC Rules. These limits are designed to provide reasonable protection against harmful interference in a residential installation. This equipment generates, uses and can radiate radio frequency energy and, if not installed and used in accordance with the instructions, may cause harmful interference to radio communications. However, there is no guarantee that interference will not occur in a particular installation. If this equipment does cause harmful interference to radio or television reception, which can be determined by turning the equipment off and on, the user is encouraged to try to correct the interference by one or more of the following measures:

- Reorient or relocate the receiving antenna.
- Increase the separation between the equipment and receiver.
- Connect the equipment into an outlet on a circuit different from that to which the receiver is connected.
- Consult the dealer or an experienced radio/ TV technician for help.

2.8 RF Exposure

Your device contains a transmitter and a receiver. When it is ON, it receives and transmits RF energy. When you communicate with your device, the system handling your connection controls the power level at which your device transmits.

Important safety information regarding radiofrequency radiation (RF) exposure. To ensure compliance with RF exposure guidelines the device must be used with a separation from the body. Failure to observe these instructions could result in your RF exposure exceeding the relevant guideline limits.

The maxim permissible exposure is defined in 47 CFR 1.1310 with $1\text{mW}/\text{cm}^2$. The transmitter is using external antenna that operate at 20cm or more from nearby persons. The maxim power density is $0.157\text{mW}/\text{cm}^2$.