

**ZTE MF332
HSDPA/EDGE Card
User Manual**

Copyright © 2007 by ZTE Corporation
All rights reserved.

No part of this publication may be excerpted, reproduced, translated or utilized in any form or by any means, electronic or mechanical, including photocopying and microfilm, without the prior written authorization of ZTE Corporation.

Edition: 1st edition, Sep., 2007

.

Contents

1 Wireless Data Card Introduction.....	1
1.1 Introduction	1
1.2 Safety Warning and Notices.....	2
1.3 Systems Supported.....	3
1.4 PC System Requirements.....	4
1.5 Data Card Technical Specification.....	4
2 Installation	5
2.1 Unpacking	5
2.2 Appearance and Parts.....	5
2.3 Software Installation.....	6
2.4 Running the Application	8
2.5 Safe Removal from your system.....	9
2.6 Software Uninstallation Process	10
2.7 Hardware Set Up	11
3 Using the Software Application	12
3.1 Software Introduction	12
3.2 Connecting to the Internet.....	16
3.3 Making a Call	17
3.4 Answering an Incoming Call.....	18
3.5 Other Call Functions	18
3.6 SMS Messages.....	19
3.7 Create a New Message	19
3.8 Phone Book	21
3.9 Settings	23
3.10 Call Records	29
3.11 Help.....	29
4 FAQ & Answers	30
5 Environmental Statement	33

1 Wireless Data Card Introduction

1.1 Introduction

Thank you for choosing the ZTE MF332 HSDPA/EDGE Card. To help you use your card please read the manual carefully and keep it for reference.

The pictures, symbols and contents in this manual are for reference only. They might not be completely identical to your card. Please refer to the actual device. The manufacturer operates a policy of continuous development. We reserve the right to update and modify technical specifications in this document at any time without prior notice.

The ZTE MF332 HSDPA/EDGE Card is a multi-mode 3G wireless data card compatible with HSDPA, WCDMA, EDGE, GPRS, and GSM networks. With PCMCIA II interface to connect to portable PC's, it integrates the functionality of a modem and a mobile phone and combines mobile communication with the internet perfectly. It supports data, audio and SMS services through the mobile phone network helping you break away from limitations of fixed line connections, location and network connectivity to communicate wirelessly anytime and anywhere.

1.2 Safety Warning and Notices

To the owner

- The use of electronic transmitting devices is forbidden in aircraft, at petrol stations and in hospitals. Please observe and obey all warning signs and switch off your PC in these conditions.
- Operating a portable PC and data card may interfere with medical devices like hearing aids and pacemakers.
- Be aware of warning signs in places such as oil refineries or chemical factories where there are explosive gases or explosive products being processed.
- Store the data card out of the reach of children. The data card may cause injury if used as a toy or may be damaged by rough play or moisture.
- This data card has been tested for compliance with FCC RF Exposure (SAR) limits in the typical laptop computer configuration and this data card can be used in desktop or laptop computers with side mounted PCMCIA slots.
- This data card cannot be used with handheld PDAs (personal digital assistants).
- This data card and its antenna must not be co-located or operated in conjunction with any other antenna or transmitter.
- This data card complies with part 15 of the FCC Rules. Operation is subject to the following two conditions:
(1) This data card may not cause harmful interference, and (2) this data card must accept any interference received, including interference that may cause undesired operation.
- This data card has been tested and found to comply with the limits for a Class B digital device, pursuant to part 15 of the FCC Rules.

- This data card generates, uses and can radiate radio frequency energy and, if not installed and used in accordance with the instructions, may cause harmful interference to radio communications.
- There is no guarantee that interference will not occur in a particular installation. If this data card does cause harmful interference to radio or television reception, which can be determined by turning the data card off and on

Using your Data card

- Only use original accessories supplied by the manufacturer. Using unauthorized accessories may invalidate your warranty.
- Avoid using the data card near or inside metallic structures or establishments that can emit electromagnetic waves.
- The data card is not waterproof, please keep it dry and store it in a cool place out of direct sunlight.
- Handle the data card with care. Don't drop, bend, knock or treat it harshly to avoid damage to the unit
- There are no user serviceable parts. Dismantling the unit will invalidate the warranty.
- Do not attempt to disassemble the data card by yourself. Changes and modifications made to the data card without the approval of manufacturer could void your authority to operate this data card.
- Operating temperature range of 0°C ~ +55°C and humidity 5% ~ 95% are recommended.

1.3 Systems Supported

The ZTE MF332 HSDPA/EDGE Card uses the PCMCIA II form factor

and supports most makes of portable PCs such as HP, Compaq, IBM, Toshiba, LG, Dell, etc.

1.4 PC System Requirements

The data card and software application supports Windows 2000, XP and Vista only with recommended specification:

CPU	Pentium III or above
Hard Disk	20G or above
RAM	128M or above

1.5 Data Card Technical Specification

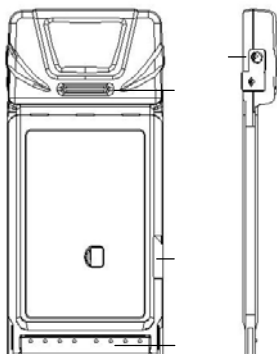
Network Standards	HSDPA/ WCDMA/ EDGE/ GPRS/ GSM
Frequency Bands	WCDMA/ HSDPA 850MHz: 824-849 MHz 869-894 MHz
	WCDMA/HSDPA 2100MHz: 1920-1980 MHz 2110-2170 MHz
	GSM/GPRS/EDGE 900MHz: 890-915 MHz 935-960 MHz
	GSM/GPRS/EDGE 1800MHz:1710-1785 MHz 1805-1880 MHz
	GSM/GPRS/EDGE 1900MHz: 1850 -1910 MHz 1930 -1990 MHz
Dimensions	118x54x12 mm
Weight	About 55g
Data Rates	HSDPA mode max speed 3.6Mbps WCDMA mode max speed 384 kbps EDGE mode max speed 236.8kbps
Working Voltage	3.3V
Current consumption	Stand by: 80mA Max: 850mA

2 Installation

2.1 Unpacking

Check the following items are included in the package: ZTE MF332 HSDPA/EDGE Card, Headset, Software CD, Quick Start Guide and Warranty Card.

2.2 Appearance and Parts




1. PCMCIA Interface
2. SIM/USIM Card Slot
3. LED Indicator
4. Headset Jack

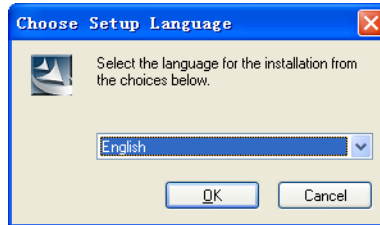
LED Indicator Status:

LED	Status
Green On	Normal.
Red On	Abnormal / No network signal
Green flashing	Incoming Call
Green blinks four times	New SMS Message

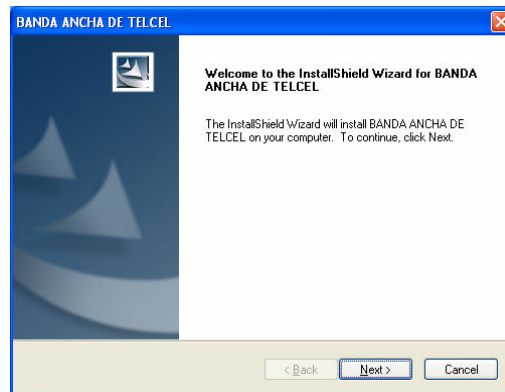
2.3 Software Installation

Install the software before inserting your card into your PC.

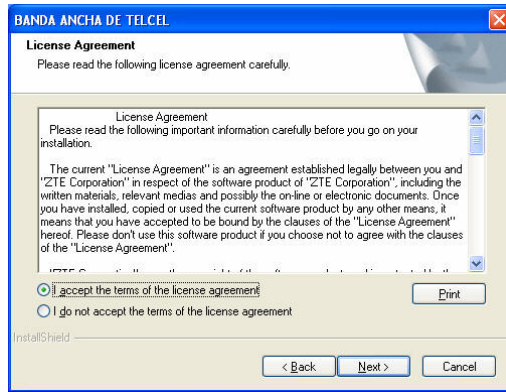
Insert the CD into your CD-ROM drive. The installation should auto start. If the PC doesn't launch the installation automatically please run  on the CD.



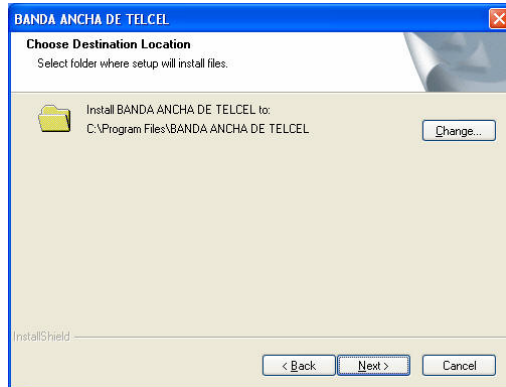
Choose Setup Language, and then click **OK** to continue.



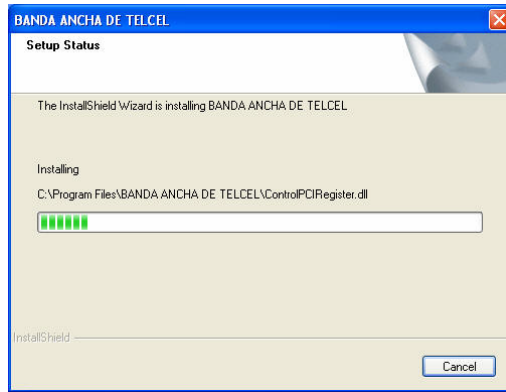
Click **Next** to continue.



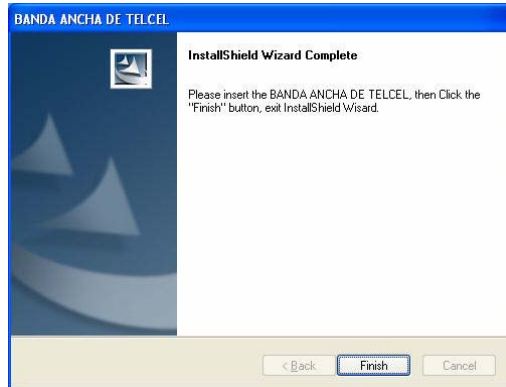
Select "I accept..." and click **Next** to continue.



You can change the installation folder by pressing **Change**, and then click **Next** to continue.



Installation is in progress.



Click **Finish** to complete the software installation.

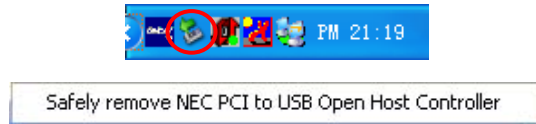
2.4 Running the Application

When the software installation is finished make sure your SIM/USIM card is inserted correctly in the ZTE MF332 HSDPA/EDGE Card then

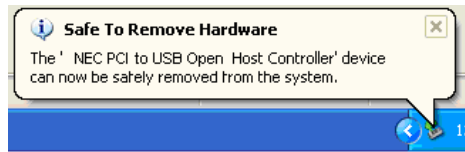
insert the data card into the PC slot and allow Windows to complete the New Hardware Installation. Launch the application software by double-clicking on the desktop icon or select **Start** → **Programs** → **BANDA ANCHA DE TELCEL** → **BANDA ANCHA DE TELCEL**.

2.5 Safe Removal from your system

In order to safely remove the data card from your system, right click the service provider logo on the task bar select "Power Off Data Card" and close the software application then left click on the icon in the taskbar as shown:



Click the item in the above dialog box to get the following message:

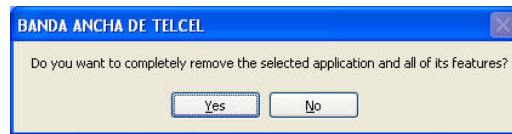


Now, you can pull out the data card safely.

2.6 Software Uninstallation Process

If you need to uninstall the software first close the application program then click **Start** → **Programs** → **BANDA ANCHA DE TELCEL** → **Uninstall**.

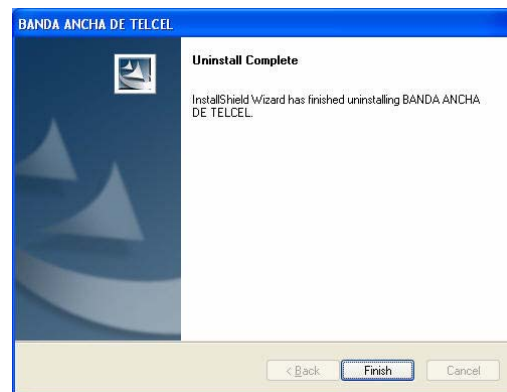
Follow the prompts on screen:



Click **Yes** to continue.



Remove the Data Card from PC, and then click **Yes** to continue.



Click **Finish** and complete the application software removal.

2.7 Hardware Set Up

First install the CD Software See 2.3 above.

1. Inserting SIM/USIM card into the data card

Before inserting the data card into your PC you need to fit your SIM/USIM card. Insert the SIM/USIM card with the gold contacts facing downwards into the slot on the side of the data card.

2. Inserting data card into your PC

Insert the data card into the PCMCIA slot and push firmly home. The LED indicates when the data card is properly inserted.

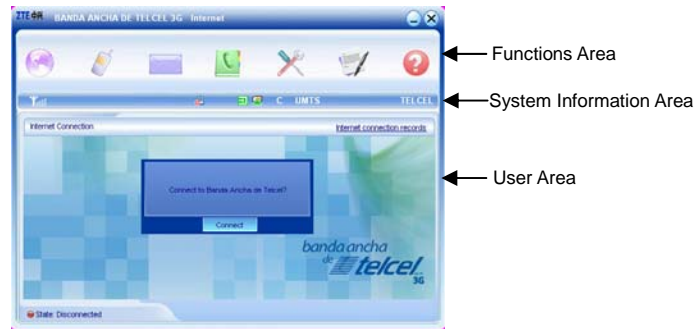
3. Earphone Connection

In order to send or receive voice calls please plug the earphone supplied into the socket on the data card.

3 Using the Software Application

3.1 Software Introduction

Launch the software by double clicking on the desktop icon. The connect interface is displayed:



Press **Connect** to connect to the default service.

The screen is divided into three sections. The top section contains the function buttons for quick connection, messages and set up. The next bar contains network and card status and is called the System Information Area. The remaining space is the user area and varies depending on application.

1. Functions Area:

The function buttons are straight forward and intuitive providing quick access to the most common features of the data card.



Connect to the Internet



Dial or receive a call.



Send or view SMS Messages



Save and view your contacts list



Configure the data card settings

















View your call records



System help

2. System Information Area

The system information area reports the status of the data card, signal strength, missed calls, messages etc.

-  Network signal strength indicator.
-  You have incoming call or missed calls
-  There are new SMS messages
-  Data card disconnected from the Internet
-  Data card connected to the Internet
-  SIM/USIM card is roaming
-  **P** indicates packet-switched service. **C** indicates circuit switched service
-  Data card has been inserted into the computer
-  Data card has not been inserted into the computer
-  Data card is offline
-  SIM/USIM card is present and active
-  SIM/USIM card has not been inserted or the SIM/USIM card is not correct
-  Current network service type, i.e. WCDMA or GPRS/GSM
-  Name of current service provider

System Information - Minimized Icons on task bar

When the window is minimized, the system icons display on the taskbar.

Double click the icon to re-size the display.

1. Taskbar Icons' Description



Data card has been inserted into the computer.



Data card has not been inserted into the computer.



Data card is offline.



SIM/USIM card has not been inserted or the SIM/USIM card is not correct.



Data card is working normally, idle status.



No network signal.



New Message.

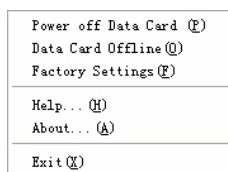


New incoming call or missed calls.



Green indicates successful connection to the internet.

2. Taskbar Right Click Options:



Power off Data Card: The card is switched off. To restart the card you need to remove and re-insert it into the PC slot.

Data Card Offline: Take the data card offline. You cannot receive calls in this state. You can re-start the card by right clicking on the task bar and selecting Data card Online.


Factory Settings: Restore factory defaults (note this does not erase your contacts, SMS or call records).

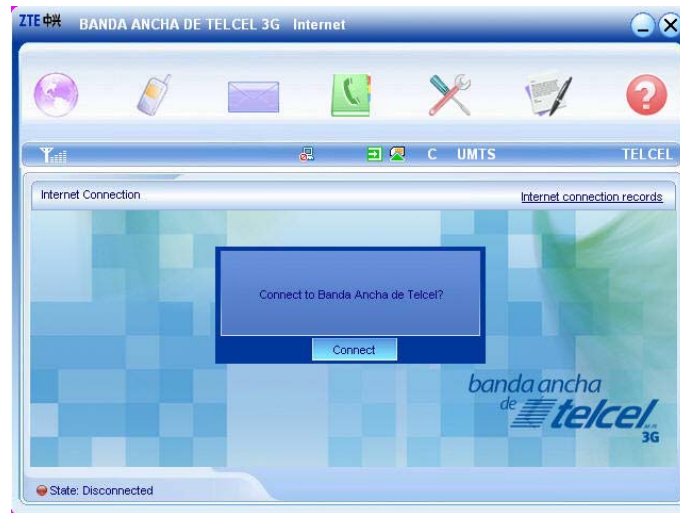
Help: View system help.

About: View application software and hardware versions.

Exit: Close the application interface and stop using the data card.

3.2 Connecting to the Internet

Click the **Internet** icon  and press **Connect** to confirm.




Notes

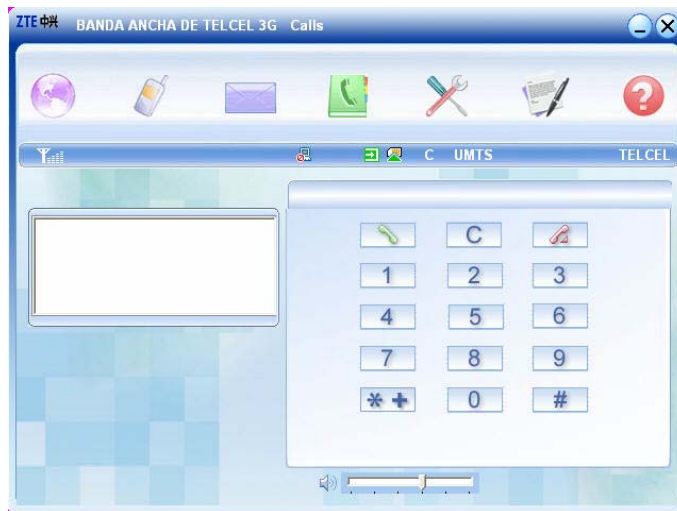
- For connecting to the Internet, you should set the right profile file at first. See 3.9 section 1.
- Once you are connected, run Internet Explorer or other applications in the usual way.
- You can still receive and make calls while you are connected to the net.
- The connected icon appears on the taskbar:







- Press **Disconnect** to terminate the connection.

3.3 Making a Call

Connect your headset and click the **Calls** icon  to make a call. Enter the telephone number using the keypad on the screen or by typing on the keyboard. You can also select numbers from the calls list or from your contacts.





Notes

- If you make a mistake press  to clear.
- Press  to send and press  to end a call.
- For international calls, press  twice for the international


prefix “+”.

3.4 Answering an Incoming Call


When you get an incoming call “**Incoming Call**” appears on the screen and an alert will ring on the PC. The incoming number (if available) will show in the left and the green light on the data card flashes continually. Press  to answer or press  to reject. You can also press the button on the headset to answer the call.

3.5 Other Call Functions

1. Volume Adjustment:

You can adjust the headphone volume by using the slider .


2. Redialing:

In standby status press  to bring up the dialed calls list, select the required number and press the **Dial** button.


3. Making an Emergency call:

Even without SIM/USIM card you still can make emergency calls. Enter the number on the keyboard or by clicking on the number keypad.

4. Dialing when surfing on the Internet:

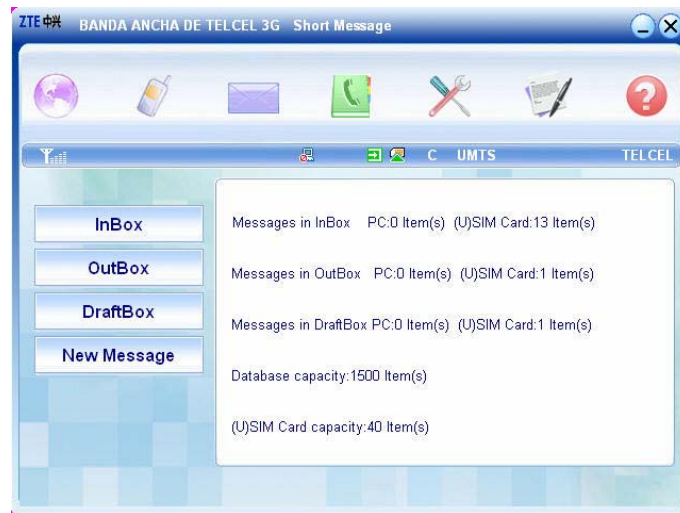
When surfing on the Internet you also can dial up and make voice calls (subject to network support). Click  to enter the calls interface.

5. Viewing missed calls:

If there is a missed call press the icon  to view the details.

3.6 SMS Messages

Click the **SMS** icon  to use the SMS interface.



Then click on the respective button to view:

InBox: Contains received SMS messages.


OutBox: Contains sent SMS messages.

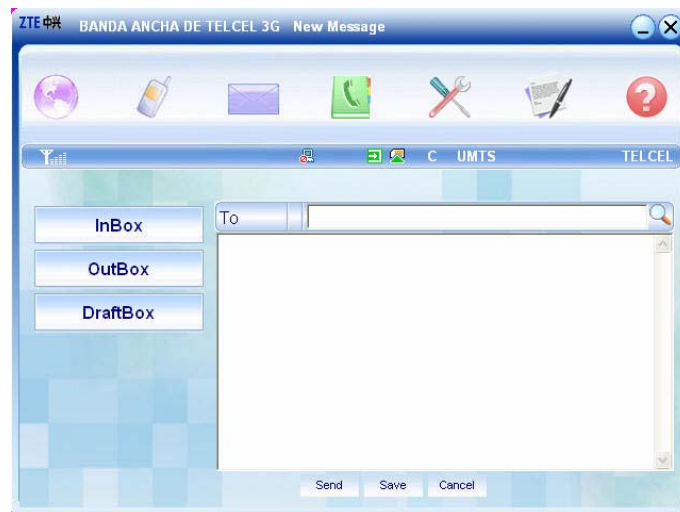
DraftBox: Contains draft messages and messages that failed to send.

After clicking on the respective box use the buttons at the bottom of the window to **Read**, **Reply**, **Forward**, **Move**, **Delete**, **Save** or **Cancel** message(s).

3.7 Create a New Message

Click **New Message**. Enter the recipient's number or select a number


from your contacts by pressing . Type your message then click **Send** and follow the prompts. After sending the SMS will be saved in the OutBox. If it fails to send the message will be saved in the Draft Box.




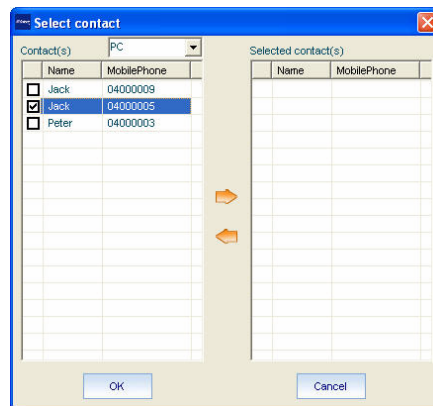
Notes

- SMS messages are limited to 765 characters including spaces etc.
- You can send messages while using the internet. Just click on the SMS icon and create a new message as above.
- You can add multiple recipients using “;” between each number.


New Message - Contacts List

After pressing the  search button you can enter single or multiple contacts by selecting the check box on the left hand side then press the

arrow button  to move it to the right box. When you press **OK** the contacts will show in the new message window.

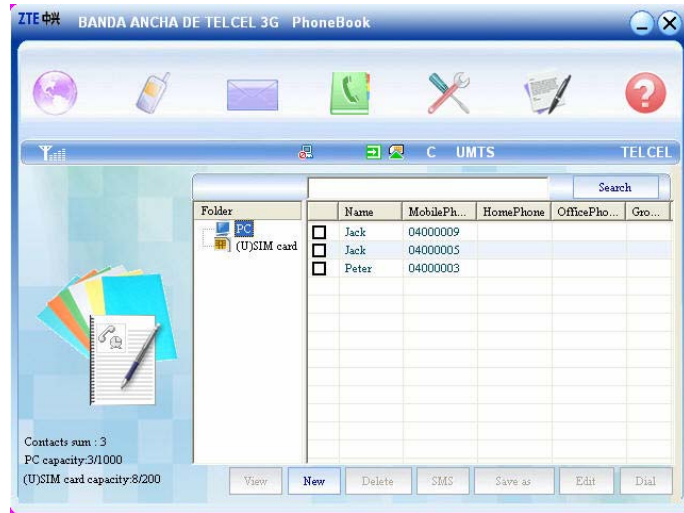


3.8 Phone Book

Click the **Phone Book** icon  to use the phone book interface. The **Folder** window indicates if the contacts are stored on the PC or the SIM/USIM card.

1. To Add a New Contact

Click **New, New Contact**. Enter the required information then select **OK** to finish.



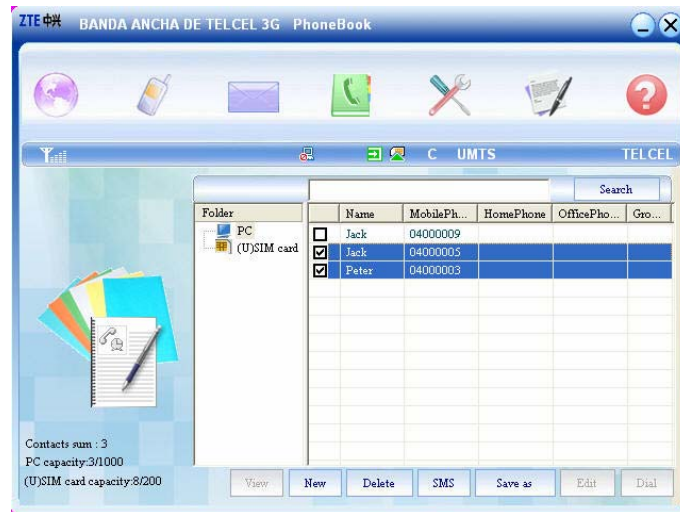
2. New Groups

Contacts can be stored in different groups. You can create and name your own groups using the New Group button.

3. Searching and Editing Records

Type any part of the record into the entry bar and click **Search**. When a record is selected you can **View**, **Delete**, **SMS**, **Save as**, **Edit** or **Dial** the selected record using the corresponding buttons.

4. Copying contacts from SIM/USIM card to PC



Use the check boxes to select your required contact on the SIM/USIM card then drag them up to the folder section and drop them on **PC**. The highlighted contacts will be copied from the card to the PC.

3.9 Settings

Click the **Settings** icon  to use the settings interface.



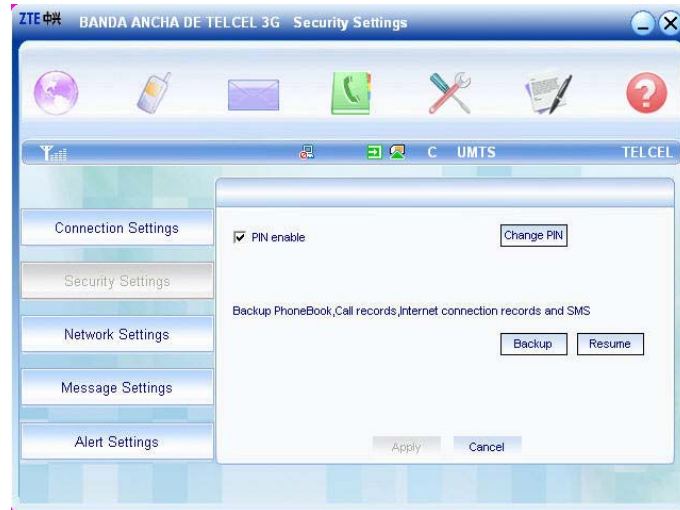
1. Connection Settings

There is one default profile provided by service provider in the settings configuration. You can view the details and set it as the default file. Consult service provider for more details.

For other profile, you can **Add**, **Delete**, **Edit**, and **Set default**.

2. Security Settings

- **PIN Enable, Change PIN** – Enable PIN protection and change your PIN Number.
- **Backup Phone Book, Call records, Internet connection records and SMS** – Store and restore back-ups on your PC.

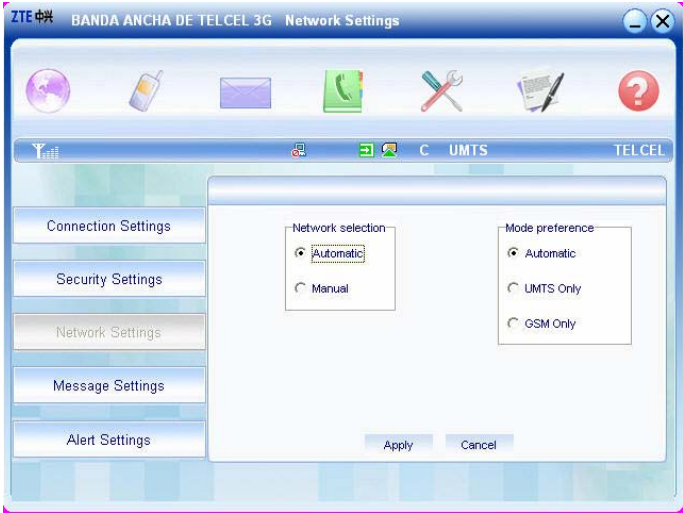


Notes

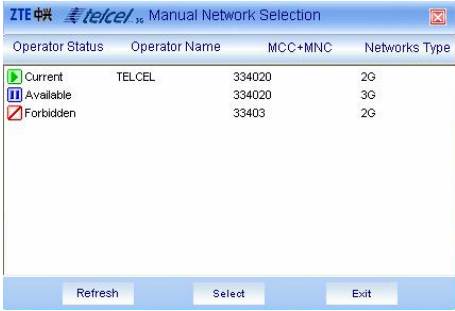
The PIN number for the card is provided by service provider. If you change or lock up your PIN number you will need to contact service provider to get a PUK code.

3. Network Settings

The network selection can be set to Automatic or Manual.



When you select **Manual** the card will search and display available networks.

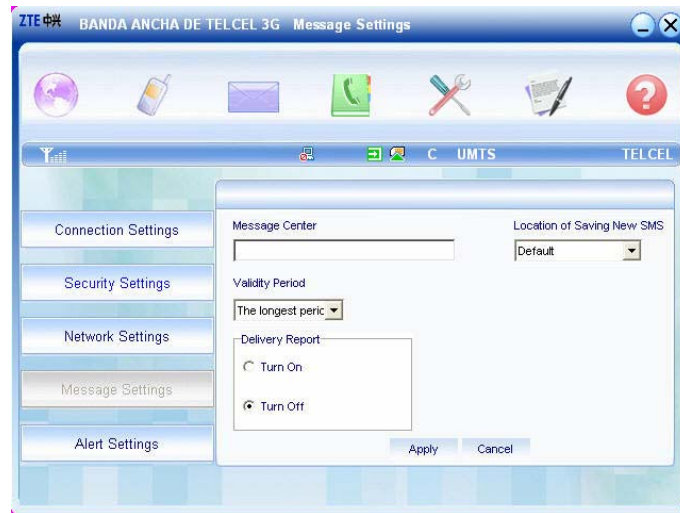


Notes

- It is best to leave the default settings on automatic. The software will negotiate the best available connection depending on your network coverage.
- Select International Roaming to enable use on overseas networks.

4. Message Settings

You can set the **Message Center** number (preset, no need to change) and change the **Validity Period**, **SMS Save Location** and **Delivery Report**.

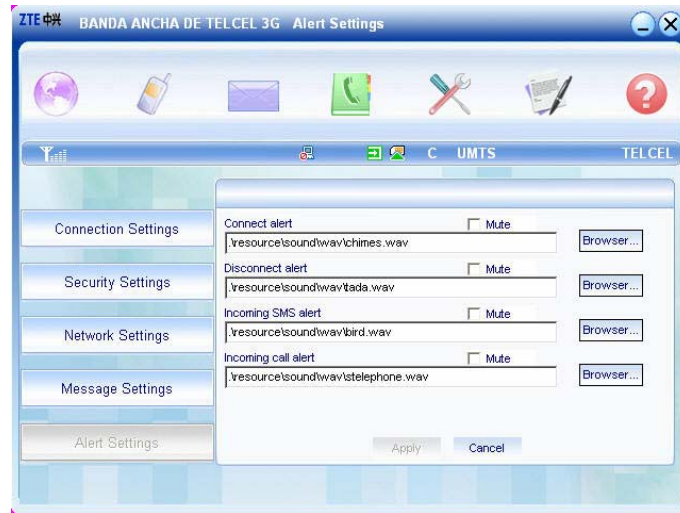


Note:

When delivery report is turned on you get a message back from the message center confirming when your SMS is delivered.

5. Alert settings

You can set different sounds or mute each alert for Connect alert, Disconnect alert, Incoming SMS alert and Incoming call alert on the PC. Use Browse to select alternative sounds.



6. Factory settings

If you change any of your settings and manage to disable your connection please try the factory settings button on the task bar. Move your mouse over the icon on the task bar and right click to select the Factory Settings option. Restoring the factory settings does not erase your phone book, saved messages or call records.

This menu is only available when the card is inserted into the PC slot.

4 FAQ & Answers

If you experience any problems with your data card please check the FAQ section below. If the problems still exists consult your service provider or ring the customer service number on the warranty card.

If the card or the software are not responding first switch the card off line, then remove and re-insert your card, close and restart the software application. Finally try rebooting the PC.

Description	Possible reasons	Solution
After restarting the PC, there is still no signal.	You are in an area where there is no network coverage.	Move location until you get better reception.
	The data card isn't inserted properly.	Pull out and insert the data card again.
	The SIM/USIM card isn't inserted correctly, eg upside-down or reversed.	Insert the SIM/USIM card correctly.
During installation the PC does not find the data card.	The installation program did not install properly.	Run the installation program first, then insert the data card. Run Setup from the CD and choose 'Repair' then re-insert the data card.
	The data card isn't inserted correctly.	Restart the computer, and insert the data card again.
Message send fails.	The SMS centre number isn't correct.	Check with your service provider and re-enter the number or restore factory defaults.
	The network is busy or is down for other reasons.	Try again later.

Description	Possible reasons	Solution
Data connection fails.	You are in an area where there is no or poor network coverage such as deep in a building or underground in a car park etc.	Move location until you get better reception.
	The network is busy.	Try again later.
	The dialed number or the APN in the user config files is incorrect.	Check the number. Check the APN, restore defaults.
	The HSDPA/EDGE data fails.	Network problem. Please check with your service provider.
	The manual configurations are set wrong.	Change your network settings to automatic. Restore defaults.
Connected to the Internet, but cannot open any web pages.	After connection, there is no data transfer.	Check your APN settings.
	Internet Explorer is outdated.	You should upgrade your Internet Explorer to be version 6.0 or higher.
	It is possible you have a virus infecting your PC.	Use anti-virus software to check and restore your system.
	You have connected to another APN which cannot connect to the Internet.	Check your APN settings. Restore defaults.
Cannot use the data card after deleting some hardware.	The wrong hardware has been deleted affecting the data card.	Pull out and insert the data card again to restart the installation software. Run Setup from the CD.

Description	Possible reasons	Solution
The window disappears when you minimize it.	This is normal. The application is still running in the background and can be accessed through the task bar.	Double click the icon on the task bar to re-size the window.
Incoming call does not show phone number.	The incoming call has blocked their number, or the network does not support this.	Problem is with the other party or the network.
No warning tones.	Sound card is not installed, the volume is too low or the sound is muted.	Check the sound card settings and adjust the volume. Check Settings, Alert Settings.
Cannot receive calls when connected to Internet.	Network problem.	Please check with your service provider.
The installation did not complete successfully.	Card was inserted before installation was complete. Drivers are corrupted, other Windows problems.	Remove and replace the card. Check 'Device Manager' in Windows and re-install the drivers. Run Setup from the CD and choose 'Repair'.

5 Environmental Statement

ZTE is committed to saving and protecting the natural environment and asks you to continue this commitment when you dispose of your equipment. Your ZTE MF332 HSDPA/EDGE Card is made using the latest manufacturing techniques and environmental standards to reduce waste and hazards to the environment. However at the end of life of the equipment the manufacturer recommends that you return the data card and accessories to your nearest re-cycling depot or send it to our recycling agent below. Valuable materials such as gold, silver, and copper can be recovered from the unit. Any toxic materials will be prevented from entering the environment and the waste materials will be recycled.