

ZTE MF633T USB Modem

Quick User Guide



ZTE中兴

Introduction

The ZTE MF633T USB modem is a multi-mode 3G USB modem, working in HSPA/UMTS/EDGE/GPRS/GSM networks. With USB interface connecting to a laptop or a desktop PC, it integrates the functionality of a modem and a mobile phone (SMS), and combines mobile communication with Internet perfectly. It supports data and SMS services through the mobile phone network, enabling you to communicate anytime and anywhere.

Specification

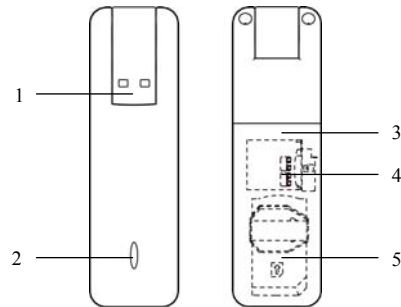
The following table shows the specification of your device.

Interface Type	USB2.0
Systems supported	Supports most types of laptop and desktop PC.
Operating systems supported	Windows XP, Vista MAC OS X
Functions	SMS service, Data service, Applications management, Data concurrent, support MicroSD card, etc.
Network Standards	HSPA/UMTS/EDGE/GPRS/GSM
Transmission speed (Max)	HSUPA 5.76Mbps UL
	HSDPA 7.2Mbps DL
Temperature	Storage: -20°C ~ +60°C
	Operation: -10°C ~ +55°C

Dimension	85 mm×25 mm×9.6 mm
Weight	About 24g
T-Flash capability	Support up to 32GB MicroSD card

Getting to know your device

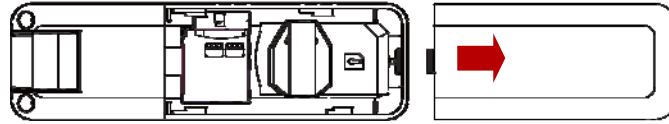
The following figure shows the appearance of the MF633. It is only for your reference. The actual product may be different.



1. USB Connector
2. Indicator
3. Back Cover
4. MicroSD card slot
5. SIM/USIM card slot

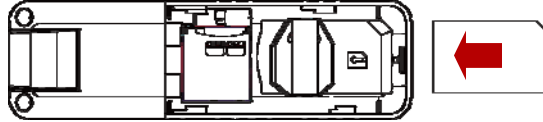
Hardware installation

1. Slide the back cover and remove it.



2. Insert the SIM/USIM card into the SIM/USIM card slot

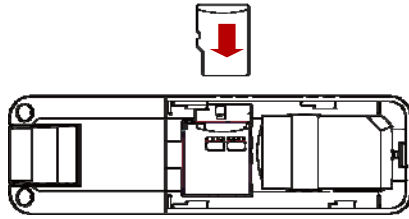
Insert the SIM/USIM card with the metal contact area facing downwards into the slot, shown as the following picture.



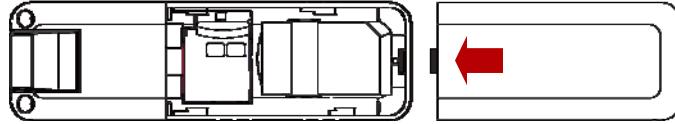
3. Insert the MicroSD card into the MicroSD card slot

Note: This modem only supports MicroSD card.

Insert your MicroSD card into the MicroSD slot, if you want to use it. Make sure that the metal contact side of the MicroSD card facing downwards, shown as the following picture.



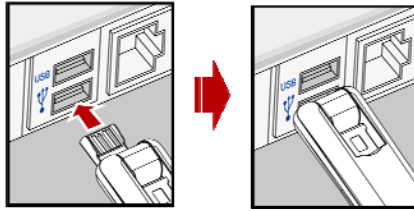
4. Close the back cover



5. Connect the Modem to your laptop or desktop PC

Rotate the USB connector and plug the USB connector into your computer's USB port. Make sure that it is tightly inserted.

The OS automatically detects and recognizes new hardware and starts the installation wizard.



Software Installation

On different operating systems, the installation procedures may be different.

Follow the system prompts during operation.

- **For Windows OS**

Your system will start the software setup process automatically when you connect the modem to your computer correctly. Follow the system prompts to complete the software installation.

Note: If the system does not launch installation automatically, you can run the installation program in path of **My Computer** → **ZoomTown Connect** → **Install.exe**.

- **For Mac OS**





The system will automatically display a **ZoomTown Connect** CD-ROM icon on the desktop, when you connect the modem to your computer correctly. Double click the installation software package in the **ZoomTown Connect**, and follow the system prompts to complete the software installation.

Safe Removal from your System

Please close the application software, and then you can pull out the USB Modem safely.

How to use your modem

Various icons are presented to enable quick operation of the following functions:

	SMS	Click the “ New ” button, enter recipient’s number and content, and then click “ Send ” to send new message.
	Phonebook	Click “ New ” to fill in a new contact person and contact details.
	Settings	Set the configuration for the USB modem.
	Data record	Show the data record.

Safety Warning

To the owner

- Using electronic transmitting devices in aircraft, at petrol stations, and in hospitals is prohibited. Please observe and obey all warning signs and switch off your modem in these conditions.
- Operating USB modem may interfere with medical devices like hearing aides and pacemakers.
- Be aware of warning signs in places such as oil refineries or chemical factories where there are explosive gases or explosive products being processed.
- Store the USB modem out of the reach of children. The USB modem may cause injury if used as a toy or may be damaged by rough play or moisture.

Using your USB Modem

- Only use original accessories supplied by the manufacturer. Using unapproved accessories may invalidate your warranty.
- Avoid using the USB modem near or inside metallic structures or establishments that can emit electromagnetic waves.
- The USB Modem is not waterproof. Please keep it dry and store it in a cool place out of direct sunlight.
- Handle the USB modem with care. Do not drop, bend, knock or treat it harshly to avoid damage to the unit.
- There are no user serviceable parts. Dismantling the unit will invalidate the warranty.
- Operating temperature range of $-10^{\circ}\text{C} \sim +55^{\circ}\text{C}$ and humidity 5%~95% are recommended.

Radio Frequency (RF) Energy

- This model device meets the government's requirements for exposure to radio waves.
- This device is designed and manufactured not to exceed the emission limits for exposure to radio frequency (RF) energy set by the Federal Communications Commission of the U.S. Government:
- The exposure standard for wireless devices employs a unit of measurement known as the Specific Absorption Rate, or SAR. The SAR limit set by the FCC is 1.6W/kg.
*Tests for SAR are conducted using standard operating positions accepted by the FCC with the device transmitting at its highest certified power level in all tested frequency bands. Although the SAR is determined at the highest certified power level, the actual SAR level of the device while operating can be well below the maximum value. This is because the device is designed to operate at multiple power levels so as to use only the power required to reach the network. In general, the closer you are to a wireless base station antenna, the lower the power output.
- The highest SAR value for the model device as reported to the FCC when worn on the body, as described in this user guide, is 1.16 W/kg (Body-worn measurements differ among device models, depending upon available enhancements and FCC requirements.)
- While there may be differences between the SAR levels of various devices and at various positions, they all meet the government requirement.
- The FCC has granted an Equipment Authorization for this model device with all reported SAR levels evaluated as in compliance with the FCC RF exposure guidelines. SAR information on this model device is on file with the FCC and can be found under the Display Grant section of <http://www.fcc.gov/oet/fccid> after searching on
- FCC ID: Q78-ZTEMF633T.

FCC Compliance

- This device complies with part 15 of the FCC rules. Operation is subject to the condition that this device does not cause harmful interference.
- This device has been tested and found to comply with the limits for a Class B digital device, pursuant to Part 15 of the FCC Rules. These limits are designed to provide reasonable protection against harmful interference in a residential installation. This equipment generates uses and can radiate radio frequency energy and, if not installed and used in accordance with the instructions, may cause harmful interference to radio communications. However, there is no guarantee that interference will not occur in a particular installation. If this equipment does cause harmful interference to radio or television reception, which can be determined by turning the equipment off and on, the user is encouraged to try to correct the interference by one or more of the following measures:
 - Reorient or relocate the receiving antenna.
 - Increase the separation between the equipment and receiver.
 - Connect the equipment into an outlet on a circuit different from that to which the receiver is connected.
 - Consult the dealer or an experienced radio/TV technician for help.Changes or modifications not expressly approved by the party responsible for compliance could void the user's authority to operate the equipment.
- The antenna(s) used for this transmitter must not be co-located or operating in conjunction with any other antenna or transmitter.