

Spro2

Quick Start Guide

LEGAL INFORMATION

Copyright © 2015 ZTE CORPORATION.

All rights reserved.

No part of this publication may be quoted, reproduced, translated or used in any form or by any means, electronic or mechanical, including photocopying and microfilm, without the prior written permission of ZTE Corporation.

Notice

ZTE Corporation reserves the right to make modifications on print errors or update specifications in this guide without prior notice.

We offer self-service for our smart terminal device users. Please visit the ZTE official website (at www.zteusa.com) for more information on self-service and supported product models. Information on the website takes precedence.

Visit <http://www.zteusa.com> to download the user manual. Just click **Support** from the home page and then select your product to search for related support information.

Disclaimer

ZTE Corporation expressly disclaims any liability for faults and damages caused by unauthorized modifications of the software.

Images and screenshots used in this guide may differ from the actual product.

Trademarks

ZTE and Spro2 logos are trademarks of ZTE Corporation.

Google and Android are trademarks of Google, Inc.

The *Bluetooth*[®] trademark and logos are owned by the Bluetooth SIG, Inc.



Qualcomm[®] Snapdragon[™] processors are products of Qualcomm Technologies, Inc.

Qualcomm and Snapdragon are trademarks of Qualcomm Incorporated, registered in the United States and other countries. Used with permission.



DLP is the trademark of Texas Instruments.



microSDHC Logo is a trademark of SD-3C, LLC.

Manufactured under license from Dolby Laboratories. Dolby, Dolby Audio, and the double-D symbol are trademarks of Dolby Laboratories.

Other trademarks and trade names are the property of their respective owners.

Version No.: R1.1

Edition Time: May 5, 2015

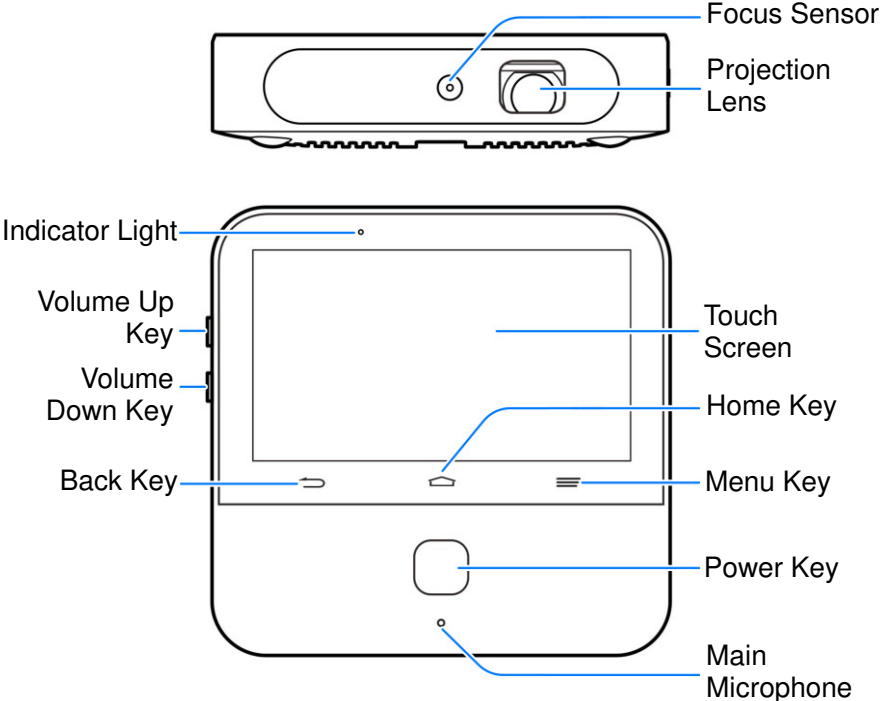
Manual No.: 079584507194

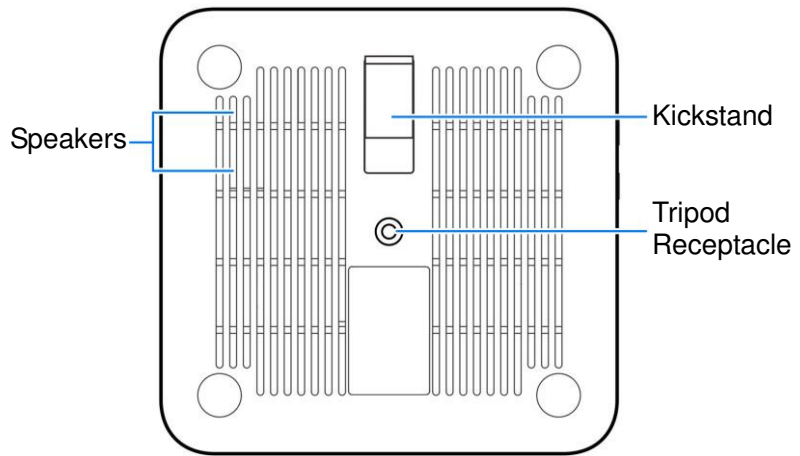
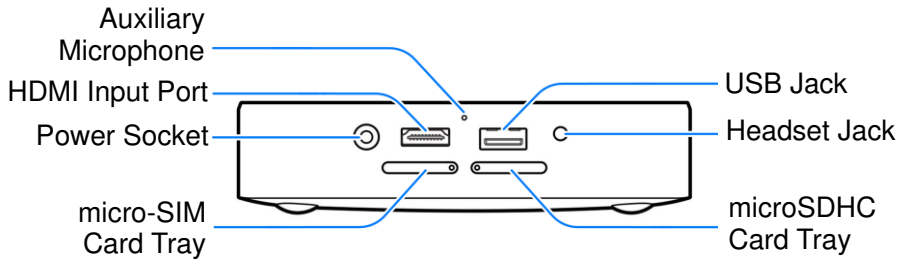
Contents

Getting to Know Your Spro2	7
Replacing the micro-SIM Card	11
Installing the microSDHC™ Card (Not Included).....	14
Unmounting the microSDHC Card	17
Charging the Battery	17
Powering On/Off Your Spro2	19
Restarting Your Spro2	19
Waking Up Your Spro2	20
Getting Verizon Wireless Service	21
Using the Touch Screen	22
Getting to Know the Home Screen	25
Turning On/Off the Projector.....	33
Adjusting the Projection.....	34
Projecting a File Saved in Your Spro2	36
Projecting an HDMI Source.....	37

Projecting a File Saved in Your USB Device	40
Projecting a Source on Your Phone via Miracast (Wi-Fi Display)	42
Connecting Your Spro2 to a Computer via USB	44
Connecting to a Webcam (Not Included)	46
Enabling Mobile Data Access	47
Connecting to Wi-Fi®	47
Sharing Your Mobile Data Connection as a Mobile Hotspot	48
Using Miracast and Mobile Hotspot Simultaneously	50
For Your Safety	52

Getting to Know Your Spro2





Projection Lens

Project the display on a surface.



WARNING!

Do not look directly into the projection lens or point the lens toward people or animals' eyes when the projector is on as this may cause injury to the eyes.

Focus Sensor

Analyze the clarity of the projected image in order for the projector to adjust its focus automatically.

Back Key

Touch to go to the previous screen.

Home Key

- Touch to return to the **HOME** tab of the home screen.
- Touch and hold to open the **Google** app or the web browser.

Menu Key

- Touch to get options for the current screen.
- Touch and hold to see recently used apps.

Volume Key (Volume Up/Down)

Press or hold to turn the volume up or down.

Power Key

- Press and hold to enable or disable airplane mode, power on/off or restart your Spro2.
- Press to turn off or on the screen display.
- Press twice quickly when the projector is turned on to adjust its focus automatically.

Main Microphone / Auxiliary Microphone

Transmit your voice. The auxiliary microphone is useful for canceling ambient noise.

Ventilation Port

Exhaust hot air when the projector is on.



WARNING!

Do not place anything near the ventilation port as this may cause internal heat buildup. Do not place your hand near the ventilation port as this may cause injury.

Tripod Receptacle

Connect a tripod (not included in the packaging).

Replacing the micro-SIM Card

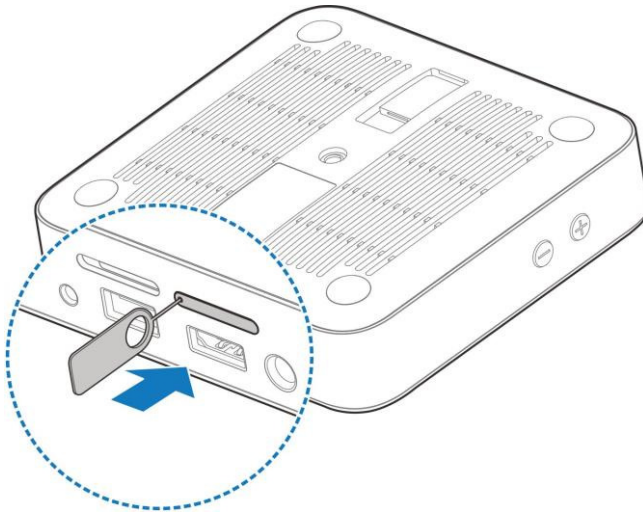
A micro-SIM card is preinstalled in your Spro2, and you can replace a new micro-SIM card if needed. The micro-SIM card can be installed or removed while Spro2 is turned on.



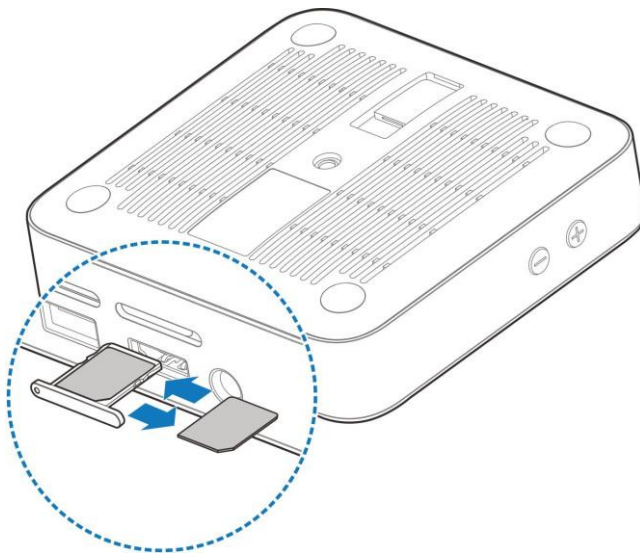
WARNING!

To avoid damage to Spro2, do not use any other kind of SIM card, or any non-standard micro-SIM card cut from a SIM card. You can get a standard micro-SIM card from your mobile service provider.

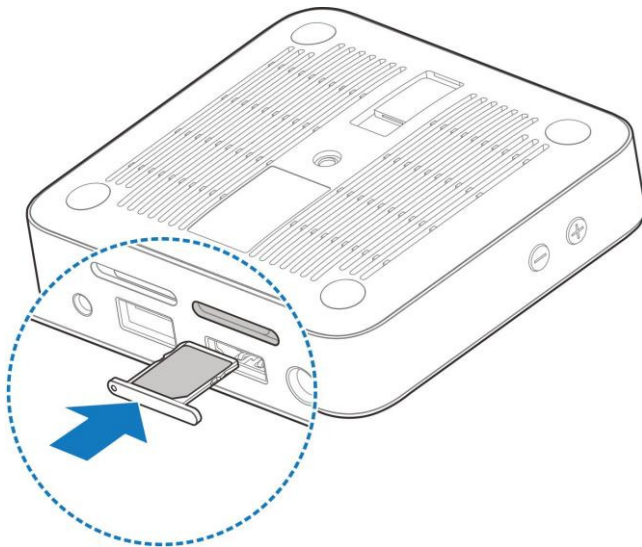
1. Turn your Spro2 upside down. Insert the tip of the tray eject tool into the hole on the micro-SIM card tray and take the tray out of the slot.



2. Remove the micro-SIM card on the tray and replace a new one.



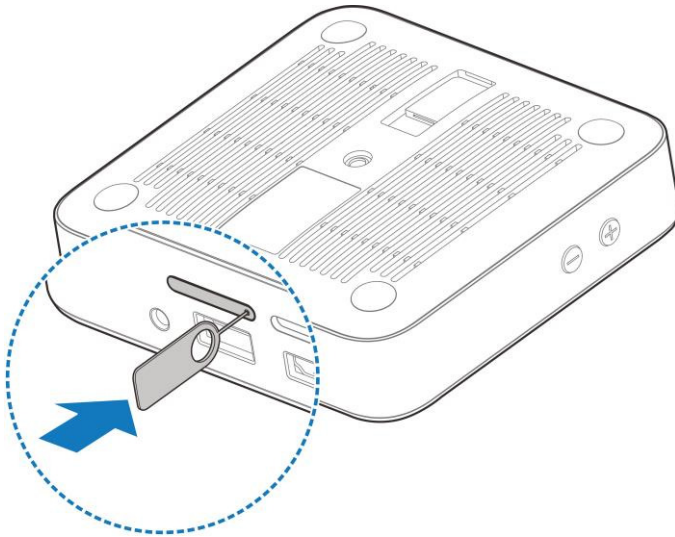
3. Carefully install the tray back.



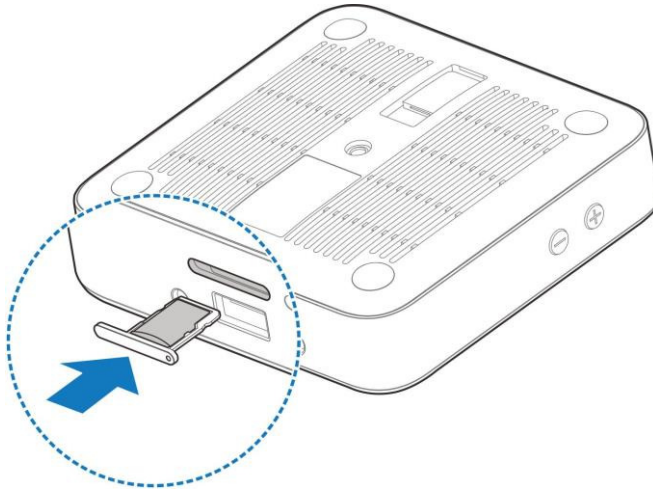
Installing the microSDHC™ Card (Not Included)

A microSDHC card can be installed or removed while Spro2 is on. Before removing the microSDHC card, you need to unmount it. See *Unmounting the microSDHC Card* on page 17.

1. Turn your Spro2 upside down. Insert the tip of the tray eject tool into the hole on the microSDHC card tray and take the tray out of the slot.



2. Place the microSDHC card on the tray as shown and carefully install the tray back.



NOTE:

Some applications may require a microSDHC card to work properly if it stores certain data on it. Therefore, it is recommended that you keep a microSDHC card installed and not remove or replace it unnecessarily.

Unmounting the microSDHC Card

To prevent damage to data stored on the microSDHC card, unmount the card before removing it from Spro2.

1. From the **SETTINGS** tab of the home screen, touch **System > Device > Storage > Unmount SD card**.
2. At the prompt, read the warning and touch **OK** to continue.
3. When the **Unmount SD card** menu changes to **Mount SD card**, you can now safely remove the microSDHC card from Spro2.

Charging the Battery

You should fully charge the battery before using Spro2. Out of the box the battery should have enough power for Spro2 to turn on.



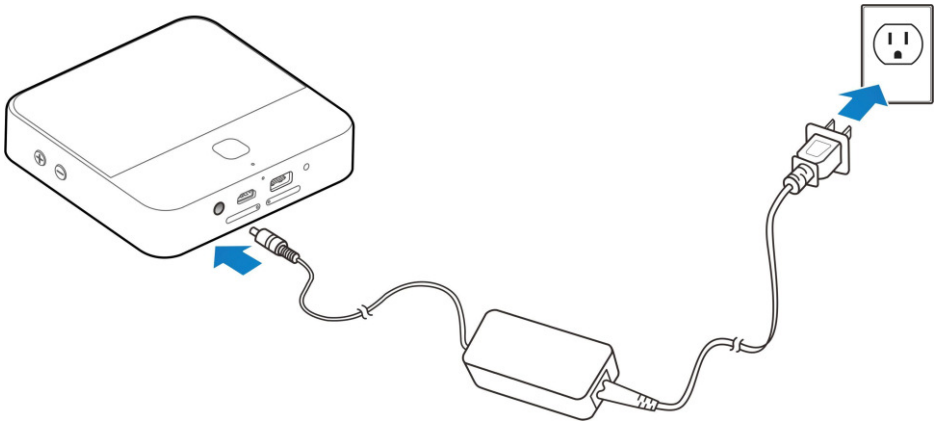
WARNING!

Use only ZTE-approved chargers and cables. The use of unauthorized accessories may cause damage.

! **CAUTION:**

Do not try to remove or change the built-in rechargeable battery in your Spro2 by yourself. By doing so will violate the warranty policy from ZTE. Contact customer service for support.

1. Plug the AC adapter into the power socket on your Spro2 and then put the plug into an electrical outlet.



2. Disconnect the adapter when the battery is fully charged.



NOTE:

If the battery is extremely low, you may not be able to power on Spro2 even when it is charging. Allow Spro2 to charge longer and try again. Contact the customer service if you still cannot power on Spro2 after prolonged charging.

Powering On/Off Your Spro2

Ensure that the battery is charged.

- Press and hold the **Power Key** to turn on your Spro2.
- To power it off, press and hold the **Power Key** to open the options menu. Touch **Power off** and then touch **OK**.

Restarting Your Spro2

If the screen freezes or takes too long to respond, try pressing and holding the **Power Key** for about 10 seconds to restart Spro2.

Waking Up Your Spro2

Your Spro2 automatically goes into sleep mode when it is not in use for certain time. The touch screen is turned off to save power and the keys are locked to prevent accidental operations.

You can wake up your Spro2 by following the instructions below.

1. Press the **Power Key** to turn the touch screen on.
2. Touch and hold any area of the screen to unlock Spro2.



NOTE:

If you have set an unlock pattern, a PIN or a password for your Spro2, you'll need to draw the pattern, or enter the PIN/password to unlock your Spro2.

Getting Verizon Wireless Service

Your Spro2 has a Verizon Wireless micro-SIM card already inserted. You can add Spro2 to your existing Verizon Wireless account or sign up for a new Verizon Wireless account via the following methods:

1. Talk with your Verizon sales representative or call 1-800-922-0204 to activate your Spro2.



NOTE:

You can find the Device ID and SIM ID on the box label for activation.

2. Turn on your Spro2 and the device will automatically prompt you to sign up for a Verizon Wireless data plan. Follow the on-screen instructions to sign up.

Using the Touch Screen

Your Spro2's touch screen enables you to control actions through a variety of touch gestures.

- Touch

When you want to type using the onscreen keyboard, or select items on the screen such as onscreen buttons, applications and settings icons, simply touch them with your finger.



- Touch and Hold

To open available options for an item (e.g. a link in a web page), simply touch and hold the item.



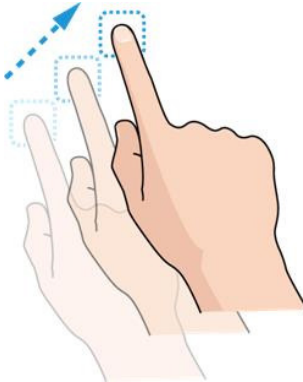
- **Swipe or Slide**

To swipe or slide means to quickly drag your finger vertically or horizontally across the screen.



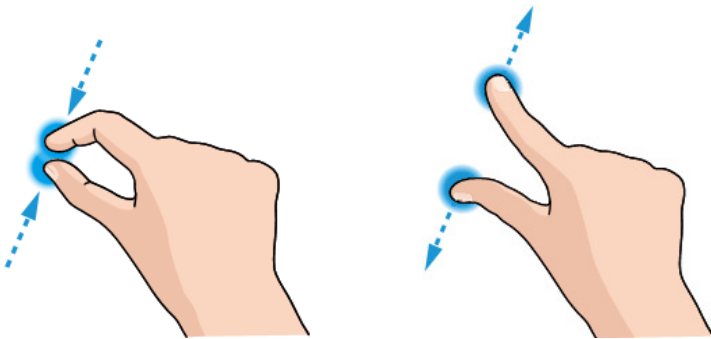
- Drag

To drag, press and hold your finger with some pressure before you start to move your finger. While dragging, do not release your finger until you have reached the target position.



- Pinch

In some apps (such as Maps, web browser, and Gallery), you can zoom in and out by placing two fingers on the screen at once and pinching them together (to zoom out) or spreading them apart (to zoom in).



- Rotate the screen
For some screens, you can automatically change the screen orientation from landscape to portrait by turning Spro2 sideways.

Getting to Know the Home Screen

The home screen is the starting point for your Spro2's applications, functions, and menus. You can customize your home screen by adding tabs, folders, or application shortcuts you need, or remove them as you like.



Navigating the Home Screen

Your home screen comes with a series of tabs.


- Touch a tab to access the items in it.
- Touch the **APPS** tab to find all your applications.
- Touch other tabs to find application shortcuts, folders and widgets.
- With widgets, you can manage some important functions of your Spro2 right from the home screen.

Personalizing the Home Screen

To add a tab:

Touch  to add a new tab in the home screen.

To edit a tab:

Touch and hold the tab and then touch  to delete the tab and all items in it, or touch the tab name to enter a new tab name.


NOTE:

Some tabs, such as the **APPS** tab and the **HOME** tab, are pre-configured and cannot be edited.


To add an application shortcut:

1. Touch and hold an application icon in the **APPS** tab or any shortcut in any other tab.
2. Drag the item to the name of the tab that you want to put the item in. The screen will display the content in that tab.
3. Drag the item to an empty spot in the tab and release your finger.

To remove an application shortcut:

1. Touch and hold an application icon in any tab other than the **APPS** tab.
2. Drag the icon to  (**Remove**) at the bottom and release your finger.

To organize shortcuts with folders:

1. Touch and hold an application icon in any tab other than the **APPS** tab.
2. Drag the icon to  (**Folder**) at the bottom and release your finger. A new folder is created and the icon is moved into the folder.
3. To add more shortcuts into the folder, touch and hold them and drag them to the folder and release them.




NOTE:

To remove a shortcut from a folder, touch the folder to display its content, and then touch and hold the shortcut and release it after dragging it out of the folder.

To rename a folder:

1. Touch a folder to open it.
2. Touch twice the folder name displayed above the icons in the folder.
3. Enter a new name and touch **Done** or touch any area outside the folder to save the name.

To uninstall an application:

1. Touch and hold an application icon in the **APPS** tab of the home screen.
2. Touch  on the application you want to uninstall.
3. Touch **OK**.

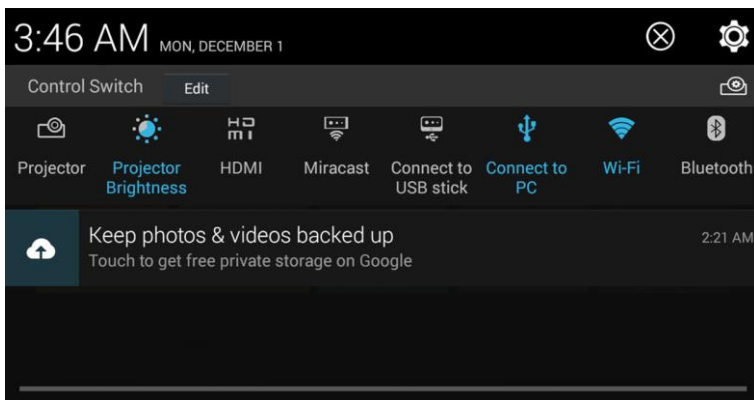





NOTE:

Not all applications can be uninstalled.

Using the Notification Panel

The notification panel provides quick access to alerts such as new Gmails, new Hangouts message and software updates.



- To open the notification panel, swipe down from the top of the screen.
- Swipe left or right to clear individual notifications or touch  to clear all.
- Touch  to access the full settings menu.
- Touch  to access the projector settings menu.









- To close the notification panel, swipe up from the bottom of the screen or touch the **Back Key**.
- Touch the function icons below **Control Switch** to turn on or off designated features directly.


















 **NOTE:**

Slide left or right on the function icons to find all icons.

Status and Notification Icons

Your Spro2 will tell you exactly what's going on by showing you simple icons. Here's what they mean.

Indicator	What it means	Indicator	What it means
	4G LTE connected		No micro-SIM card inserted
	Mobile data in use		No signal
	Battery low		Signal strength
	Battery partially drained		Airplane mode

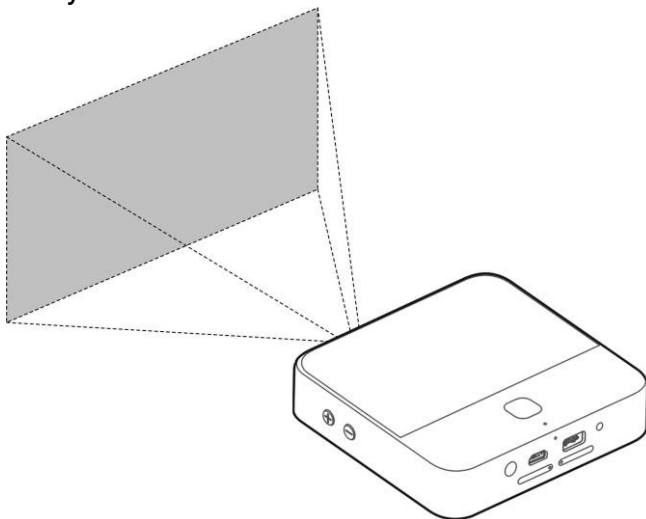
Indicator	What it means	Indicator	What it means
	Battery charging		Silent mode
	Battery full		Bluetooth on
	New Gmail™ message		Connected to a Wi-Fi® network
	Wired headset connected		Open Wi-Fi network detected
	Music playing		USB tethering on
	Unmount external USB device		Mobile hotspot on
	External USB device connected		Downloading data
	microSDHC card safely unmounted		Sending data
	USB connected		

Turning On/Off the Projector

You can use the projector embedded in your Spro2 to project the display onto large surfaces.

WARNING!

Do not look directly into the projection lens or point the lens toward people or animals' eyes when the projector is on as this may cause injury to the eyes.



There are several ways that you can turn on or off the projector.

- When your Spro2's screen is turned on, swipe up or down using **THREE** fingers on the screen to turn on or off the projector.
- Drag the status bar down from the top of the screen and touch **Projector** below **Control Switch**.
- From the **HOME** tab of the home screen, touch the round button on the **Projector** widget.
- From the **SETTINGS** tab of the home screen, touch **Projector > Control** and then touch the switch next to **Projector** in the **Projector settings** screen.



NOTE:

For best results, project onto a non-reflective white flat display surface at a 90° angle to Spro2's touch screen. The projection distance of Spro2 is about 3 to 12 feet.

Adjusting the Projection

When the projector is on, you can adjust projection focus, keystone distortion and projection brightness.

To adjust projection focus:

1. Touch the **Home Key > SETTINGS** tab > **Projector > Image**.
2. In the Focus section, turn on automatic focus or touch “+” and “-” to make manual adjustment.



NOTE:

You can also press the **Power Key** twice quickly to adjust projection focus automatically.

To adjust keystone distortion:

You can adjust keystone distortion to correct image during a tilted projection.

1. Touch the **Home Key > SETTINGS** tab > **Projector > Image**.
2. In the Keystone section, turn on automatic adjustment or touch “+” and “-” to make manual adjustment.

To adjust projection brightness:

1. Touch the **Home Key > SETTINGS** tab > **Projector > Image**.
2. In the Brightness section, select the brightness level.

Projecting a File Saved in Your Spro2

You can project a file stored in your Spro2.

1. Open the file you want to project. For example, to open image files, touch the **APPS** tab on the home screen and touch **Gallery**. Then touch the album and the image to display it in full screen.
2. Turn on the projector.
3. Adjust the projection distance and place Spro2 on a flat surface.

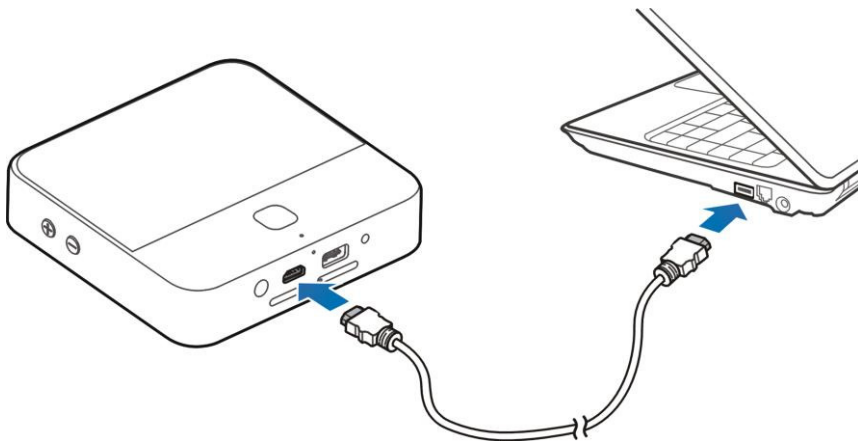


NOTE:

Press the **Power Key** twice quickly to adjust projection focus automatically.

Projecting an HDMI Source

You can project contents via an HDMI cable when connecting your Spro2 to a laptop/PC or TV STB (Set Top Box). If you have an Apple device with the Lightning connector, you need to get a Lightning Digital AV Adapter (not included in the packaging).



1. Connect your Spro2 to the laptop/PC or TV STB via the supplied HDMI cable. (Laptop/PC or TV STB is not included in the packaging.)

For Apple devices with the Lightning connector, connect the device to the HDMI cable with the Lightning Digital AV Adapter, and then connect the HDMI cable to Spro2.

2. Turn on the projector.
3. Swipe down the status bar at the top of the screen and touch **HDMI** to highlight it.
4. Operate your laptop/PC, TV STB, or Apple device to select the content you want to watch.



NOTES:

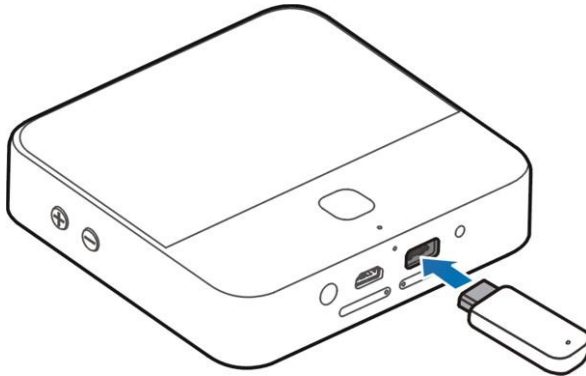
- If your laptop/PC has other kinds of output ports, such as VGA port, DVI port, DisplayPort and Mini DisplayPort, get a proper adapter to connect the laptop/PC with your Spro2.
- The maximum resolution of the HDMI source supported by Spro2 is 1080p (1920 × 1080 pixels). When projecting an HDMI source, the maximum resolution of the projection screen is 720p (1280 × 720 pixels).
- Press the **Power Key** twice quickly to adjust projection focus automatically.


If the HDMI source cannot be projected properly when you use a VGA to HDMI adaptor to connect your laptop/PC with Spro2, please follow the instructions below.

- Use an adaptor which supports 720p output.
- Set the screen resolution of your laptop/PC to 1280 × 720 pixels (for a Windows XP or Windows 7 laptop/PC), or right-click on the desktop and select **Graphics Options > Panel Fit > Maintain Display Scaling** (for a Windows 7 laptop/PC).
- Set the screen refresh rate of your laptop/PC to 60 Hz or below. For a Windows XP laptop/PC, right-click on the desktop and select **Properties > Settings > Advanced > Monitor > Screen refresh rate**; for a Windows 7 laptop/PC, right-click on the desktop and select **Screen resolution > Advanced settings > Monitor > Screen refresh rate**.

Projecting a File Saved in Your USB Device


You can project a file stored on the USB device such as a USB flash drive or a portable hard drive.



1. Slide the status bar down to open the notification panel and ensure that “Connect to USB stick”  is highlighted.
2. Connect your USB device to Spro2 via the USB jack.
3. Touch the **Home Key** > **APPS** tab > **File Manager**.
4. Touch **USB DEVICE** to open the file you want to project.
5. Turn on the projector.

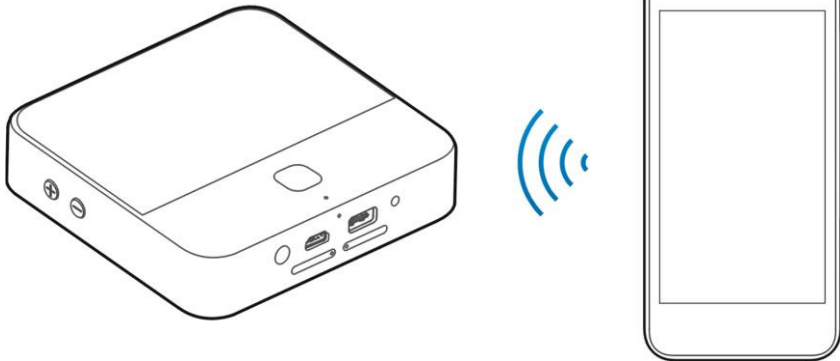


NOTES:

- To disconnect the USB device from your Spro2, you should open the notification panel and touch . After Spro2 indicates that the external USB device has been unmounted, you can remove the USB device.
- The maximum capacity of the portable hard drive supported by Spro2 is 2 TB; the maximum capacity of the USB flash drive supported is 64 GB.
- Press the **Power Key** twice quickly to adjust projection focus automatically.

Projecting a Source on Your Phone via Miracast (Wi-Fi Display)

You can display the content from compatible smart phone on your Spro2 with a Miracast (Wi-Fi Display) link.



1. Turn on the projector.
2. Swipe down the status bar at the top of the screen and touch **Miracast** to highlight it.
3. Open a Wi-Fi display application on the phone to scan for available devices within range.

4. When you see the name of your Spro2 (MF97V) displayed in the available devices section, touch the name. The phone then automatically tries to pair with your Spro2.
5. Touch **Accept** on your Spro2. After successful connection, the contents in the phone will be displayed on the projector.
6. On your phone, choose the content you want to display.



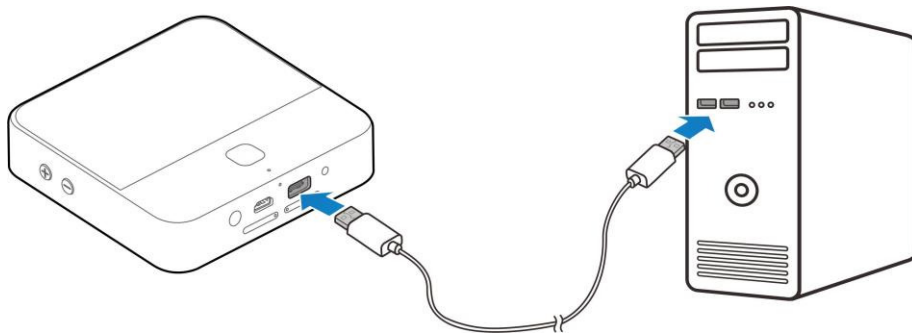
NOTES:


- To end the Miracast link, touch the **Back Key** of Spro2.
- Press the **Power Key** twice quickly to adjust projection focus automatically.




Connecting Your Spro2 to a Computer via USB

You can connect your Spro2 to a computer with a USB cable (not included) and transfer music, pictures, and other files in both directions. Your Spro2 stores these files in the internal storage or on a removable microSDHC card.

1. Connect your Spro2 to the computer using a USB cable (not included). Insert the end of the cable into the USB jack of Spro2 and insert the other end of the cable into an available USB port on your computer.

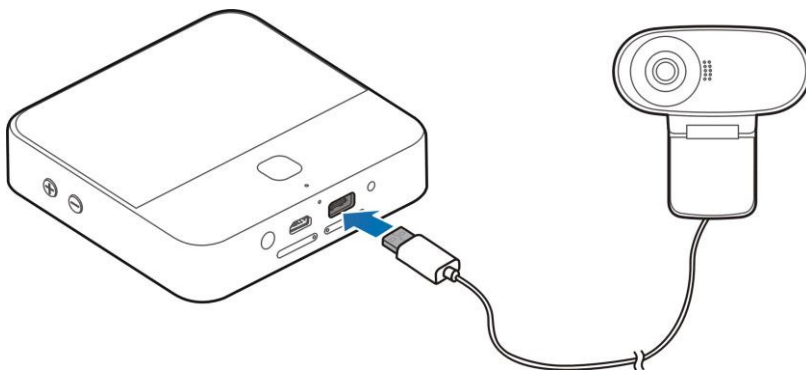



2. Slide the status bar down to open the notification panel and touch "Connect to PC"  to highlight it.

3. Open the notification panel and touch  **Connected as ...** or touch the **Home Key > SETTINGS tab > System > Device > USB mode**.
4. Choose one of the following options:
 - ▶ **Install driver:** Install the driver needed for some USB connection modes (such as MTP). You only need to install the driver on the same PC once.
 **NOTE:**
You can also install the driver on PC by running the executable file in the new CD-ROM drive.
 - ▶ **Media device (MTP):** Transfer media files on Windows[®] or Mac[®].
 **NOTE:**
For Windows XP, please install the drivers and Media Player 11 (or later version) when you use Media device (MTP) for the first time.
5. When you are done, disconnect your Spro2 with the computer.

Connecting to a Webcam (Not Included)

You can connect a webcam to Spro2 via the USB jack and have video calls by using a video chat app such as Google Hangouts and Skype.



1. Slide the status bar down to open the notification panel and ensure that “Connect to USB stick”  is highlighted.
2. Connect a webcam to Spro2 via the USB jack.
3. Open a video chat app to make a video call.



NOTES:

- You can download and install camera apps on Spro2 to get more functions, such as picture taking and video recording.
- Not all webcams are supported by Spro2. Please refer to the webcam manual for detailed instructions.

Enabling Mobile Data Access

Before using your Spro2 to access the mobile network, you need to enable the data access.

1. Touch the **Home Key > SETTINGS** tab > **System > Network > Mobile networks**.
2. Check **Data enabled** to enable data access over the mobile network.

Connecting to Wi-Fi®

Wi-Fi is a wireless networking technology that can provide Internet access at distances of up to 100 meters, depending on the Wi-Fi router and your surroundings.

To turn Wi-Fi on and connect to a Wi-Fi network:

1. Touch the **Home Key > SETTINGS > System > Network > Wi-Fi**.
2. Slide the **Wi-Fi** switch to the ON position to turn on Wi-Fi.
3. Touch a network name to connect to it.
4. If the network is secured, enter the password and touch **Connect**.




NOTE:

Your Spro2 automatically connects to previously used Wi-Fi networks when they are in range.



NOTE:

To connect to a Wi-Fi router that supports WPS, touch  on Spro2's Wi-Fi menu and press the WPS button on your router.


Sharing Your Mobile Data Connection as a Mobile Hotspot

You can share your Spro2's data connection with other devices by turning your Spro2 into a mobile Wi-Fi hotspot. The feature needs data connection on a mobile network and may result in data charges.

 **NOTE:**

When the mobile Wi-Fi hotspot feature is enabled, you cannot access the Internet via Wi-Fi connection with Spro2. You can still remain connected to the Internet via mobile data network.

1. Touch the **Home Key > SETTINGS** tab > **System > Network > Mobile Hotspot**.
2. If necessary, touch **CONFIGURE** to rename or secure Mobile Hotspot.
3. Slide the switch to turn on Mobile Hotspot.
4. On another device, locate your Spro2 via Wi-Fi and connect with it.

Or, if the device supports Wi-Fi Protected Setup, touch the WPS icon on the device, and then touch  on your Spro2.

To stop sharing your data connection, turn off Mobile Hotspot.

 **NOTE:**

You can also slide the status bar down to open the notification panel and touch **Hotspot** to turn on or off Mobile Hotspot.

Using Miracast and Mobile Hotspot Simultaneously

You can use the projector via a Miracast link and share your mobile data with other devices at the same time.

1. Turn on the Mobile Hotspot function and configure the hotspot name and security options.
2. Turn Miracast on.
3. Connect your phone or device to Spro2 via Miracast or Mobile Hotspot as you need.
 - ▶ To use Internet connection shared by Spro2, search for hotspots and connect to the one with the name starting with "DIRECT-" using your device's Wi-Fi feature. The password is the same as the one you set for Mobile Hotspot.
 - ▶ To project content from your device via Miracast, connect to Spro2 using your device's Wi-Fi Display or Cast Screen feature.













NOTES:






- If your device has been connected to the hotspot, it will be disconnected when you turn Miracast on. You need to search for hotspots and reconnect to the one with the name starting with "DIRECT-".

- Your device must support Wi-Fi in the 5 GHz band to use the hotspot or Miracast while Spro2's Mobile Hotspot and Miracast are both on.
- While the Miracast link is not active, at most 10 devices can connect to the hotspot; while the Miracast link is active, at most 5 devices can connect to the hotspot (or 4 devices if the Miracast link is used by another device).
- With Miracast active, your hotspot cannot support some advanced features such as user management, IP filtering, and WPS.

For Your Safety

General Safety

	Turn off when near explosive materials or liquids.		Don't use at gas stations.
	Turn off when told to in aircrafts and airports.		Turn off when asked to in hospitals and medical facilities.
	Your device can produce a loud sound.		Your device may produce a bright or flashing light.
	Small parts may cause choking.		Don't dispose of your device in a fire.
	Avoid contact with anything magnetic.		To prevent possible hearing damage, do not listen at high volume levels for long periods.

	<p>Keep away from pacemakers and other electronic medical devices.</p>		<p>Avoid extreme temperatures.</p>
	<p>Avoid contact with liquids. Keep your device dry.</p>		<p>Do not attempt to disassemble your device.</p>
	<p>Only use approved accessories.</p>		

Radio Frequency (RF) Energy

This device is designed and manufactured not to exceed the emission limits for exposure to radio frequency (RF) energy set by the Federal Communications Commission of the United States.

During SAR testing, this device is set to transmit at its highest certified power level in all tested frequency bands, and placed in positions that simulate RF exposure in usage near the body with the separation of 10 mm. Although the SAR is determined at the highest certified power level, the actual SAR level of the while operating can be well below the maximum value. This is because the device is designed to

operate at multiple power levels so as to use only the power required to reach the network. In general, the closer you are to a wireless base station antenna, the lower the power output.

The exposure standard for wireless employs a unit of measurement known as the Specific Absorption Rate, or SAR. The SAR limit set by the FCC is 1.6 W/kg.

Tests for SAR are conducted using standard operating positions accepted by the FCC with the device transmitting at its highest certified power level in all tested frequency bands.

The FCC has granted an Equipment Authorization for this model device with all reported SAR levels evaluated as in compliance with the FCC RF exposure guidelines. SAR information on this model device is on file with the FCC and can be found under the Display Grant section of www.fcc.gov/oet/ea/fccid after searching on FCC ID: SRQ-ZTEMF97V.

For this device, the highest reported SAR value for near the body is 0.79 W/kg. The highest reported SAR value for simultaneous transmission is 0.93 W/kg.

While there may be differences between the SAR levels of various devices and at various positions, they all meet the government requirement. SAR compliance for body operation is based on a

separation distance of 10 mm between the unit and the human body. Carry this device, at least 10 mm away from your body to ensure RF exposure levels are compliant to or below the reported level. To support body operation, choose the belt clips or holsters, which do not contain metallic components, to maintain a separation of 10 mm between the device and your body.

FCC Compliance

This device complies with part 15 of the FCC Rules. Operation is subject to the following two conditions: (1) This device may not cause harmful interference, and (2) this device must accept any interference received, including interference that may cause undesired operation.

CAUTION:

Changes or modifications not expressly approved by ZTE could violate the warranty policy. ZTE will not hold any responsibility of any damage related to that.

NOTE:

This equipment has been tested and found to comply with the limits for a Class B digital device, pursuant to part 15 of the FCC Rules.

These limits are designed to provide reasonable protection against harmful interference in a residential installation. This equipment generates, uses and can radiate radio frequency energy and, if not installed and used in accordance with the instructions, may cause harmful interference to radio communications. However, there is no guarantee that interference will not occur in a particular installation. If this equipment does cause harmful interference to radio or television reception, which can be determined by turning the equipment off and on, the user is encouraged to try to correct the interference by one or more of the following measures:

- Increase the separation between the equipment and receiver.
- Connect the equipment into an outlet on a circuit different from that to which the receiver is connected.
- Consult the customer service technician for help.

CTIA Requirements

- Do not disassemble or open, crush, bend or deform, puncture or shred the battery.
- Do not modify or remanufacture, attempt to insert foreign objects into the battery, immerse or expose to water or other liquids, expose to fire, explosion or other hazard.

- Only use the battery for the system for which it is specified.
- Only use the battery with a charging system that has been qualified with the system per CTIA Certification Requirements for Battery System Compliance to IEEE 1725. Use of an unqualified battery or charger may present a risk of fire, explosion, leakage, or other hazard.
- Do not short circuit a battery or allow metallic conductive objects to contact the battery terminals.
- Replace the battery only with another battery that has been qualified with the system per this standard, IEEE-Std-1725. Use of an unqualified battery may present a risk of fire, explosion, leakage or other hazard.
- Promptly dispose of used batteries in accordance with local regulations.
- Battery usage by children should be supervised.
- Avoid dropping the device or battery. If the device or battery is dropped, especially on a hard surface, and the user suspects damage, take it to a service center for inspection.
- Improper battery use may result in a fire, explosion or other hazard.

- The device shall only be connected to CTIA certified adapters, products that bear the USB-IF logo or products that have completed the USB-IF compliance program.

Distraction

Driving

Full attention must be given to driving at all times in order to reduce the risk of an accident. Using this device while driving can cause distraction and lead to an accident. You must comply with local laws and regulations restricting the use of wireless devices while driving.

Operating Machinery

Full attention must be given to operating the machinery in order to reduce the risk of an accident.

Product Handling

General Statement on Handling and Use

You are responsible for how you use your device and any consequences of its use.

You must always switch off your device wherever the use of your device is prohibited. Use of your device is subject to safety measures designed to protect users and their environment.

- Always treat your device and its accessories with care and keep it in a clean and dust-free place.
- Keep the screen and projection lens clean. A dirty screen or projection lens may slow down the device's reaction to your operations or lower projection image quality.
- Clean your device and its accessories with a soft material such as a cleaning cloth, or microfiber. Do not use alcohol or other corrosive substances for cleaning or allow them to get inside.
- Do not expose your device or its accessories to open flames or lit tobacco products.
- Do not expose your device or its accessories to liquids, moisture or high humidity.
- Do not drop, throw or try to bend your device or its accessories.
- Do not use harsh chemicals, cleaning solvents, or aerosols to clean the device or its accessories.
- Do not paint your device or its accessories.
- Do not attempt to disassemble your device or its accessories.
- Do not expose your device or its accessories to extreme temperatures. The operation temperature range for the device is minimum of 23 °F and maximum of 104 °F (minimum – 5 °C and maximum + 40 °C).

- Do not place your device inside or near heating equipments or high pressure containers, such as water heaters, microwave ovens, or hot cooking utensils. Otherwise, your device may be damaged.
- Please check local regulations for disposal of electronic products.

Children

Do not leave your device or its accessories with your young children alone. The device is not a toy. They might accidentally damage the device. The projection light may cause uncomfot to them or others without parents' direction.

The device contains small parts that may cause an injury or may become detached and create a choking hazard.

Demagnetization

To avoid the risk of demagnetization, do not allow electronic devices or magnetic media close to your device for a prolonged period.

Electrostatic Discharge (ESD)

Do not touch the micro-SIM card's metal connectors.

Air Bags

Do not place a device in the area over an air bag or in the air bag deployment area as an airbag inflates with great force and serious injury could result.

Seizures/Blackouts

The device can produce a bright or flashing light. A small percentage of people may be susceptible to blackouts or seizures (even if they have never had one before) when exposed to flashing lights or light patterns such as when playing games or watching video. If you have experienced seizures or blackouts or have a family history of such occurrences, please consult a physician. To reduce the risk of blackouts or seizures, use your device in a well lit room and take frequent breaks.

Repetitive Strain Injuries

To minimize the risk of Repetitive Strain Injury (RSI) when texting or playing games with your device:

- Do not grip the device too tightly.
- Press the buttons lightly.
- Use special features which are designed to minimize the times of pressing buttons, such as Predictive Text.

- Take lots of breaks to stretch and relax.

Loud Noise

This device is capable of producing loud noises, which may damage your hearing. Turn down the volume before using headphones, Bluetooth stereo headsets or other audio devices.

Device Heating

Your device may become warm during charging and during normal use.

Electrical Safety

Accessories

Use only approved accessories.

Do not connect with incompatible products or accessories.

Take care not to touch or allow metal objects, such as coins or key rings, to contact or short-circuit in the charging jack terminals.

Never puncture the surface of the device with sharp objects.

Faulty and Damaged Products

Do not attempt to disassemble the device or its accessories.

Only qualified personnel can service or repair the device or its accessories.

If your device or its accessories have been submerged in water, punctured, or subjected to a severe fall, do not use it until it has been checked at an authorized service center.

Radio Frequency Interference

General Statement on Interference

Care must be taken when using the device in close proximity to personal medical devices, such as pacemakers and hearing aids.

Please consult your doctor and the device manufacturer to determine if operation of your device may interfere with the operation of your medical device.

Pacemakers

Pacemaker manufacturers recommend that a minimum separation of 15 cm be maintained between a wireless device and a pacemaker to avoid potential interference with the pacemaker. To achieve this, do not use this device near your pacemaker and do not carry it near the breast.

Hearing Aids

People with hearing aids or other cochlear implants may experience interfering noises when using wireless devices or when one is nearby. The level of interference will depend on the type of hearing device and the distance from the interference source, increasing the separation between them may reduce the interference. You may also consult your hearing aid manufacturer to discuss alternatives.

Medical Equipment

Switch off your wireless device when requested to do so in hospitals, clinics or health care facilities. These requests are designed to prevent possible interference with sensitive medical equipment.

Aircraft

Switch off your wireless device whenever you are instructed to do so by airport or airline staff.

Consult the airline staff about the use of wireless devices on board the aircraft and enable airplane mode of your device when boarding an aircraft.

Interference in Vehicles

Please note that because of possible interference to electronic equipment, some vehicle manufacturers may forbid the use of your device in their vehicles.

Explosive Environments

Gas Stations and Explosive Atmospheres

In locations with potentially explosive atmospheres, obey all posted signs to turn off wireless devices such as your device or other radio equipment.

Areas with potentially explosive atmospheres include fuelling areas, below decks on boats, fuel or chemical transfer or storage facilities, areas where the air contains chemicals or particles, such as grain, dust, or metal powders.

Blasting Caps and Areas

Power off your device when in a blasting area or in areas posted “Turn off two-way radios or electronic devices” to avoid interfering with blasting operations.