

Quick Start Guide

WF720

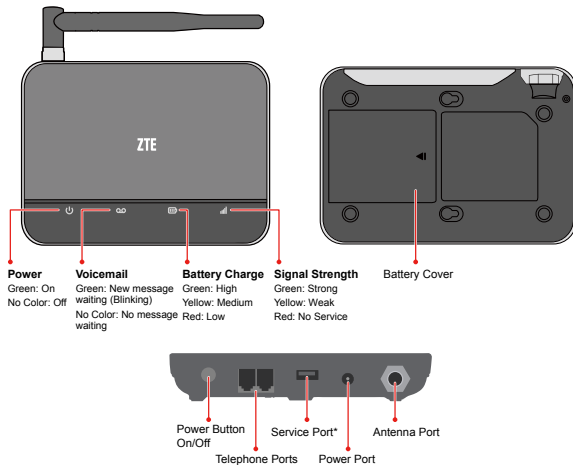


ZTE

In The Box

1. WF720 Wireless Home Phone Base Station
2. Phone Cable
3. Back-up Battery
4. Power Adapter
5. Quick Start Guide

Getting to Know Your Device

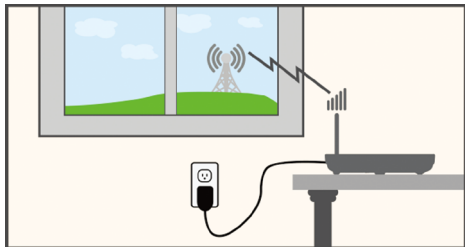


Before You Begin

Your device works exclusively with your wireless service providers' cellular network and DOES NOT use your home's phone wall jacks.

Your device should be located:

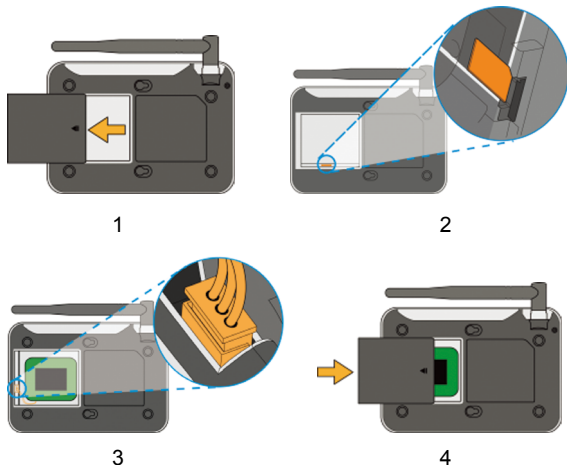
- Where you have a strong cellular signal from a cell tower, typically near a window or outside wall.
- Near an electrical wall outlet.



3

Install the SIM Card and the Battery

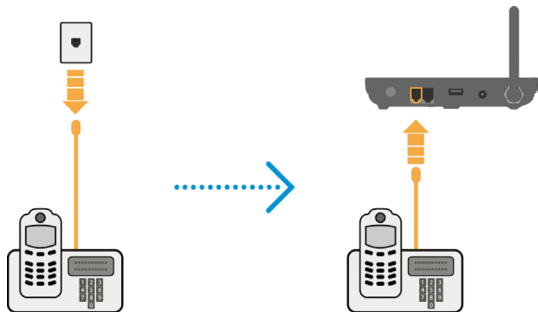
1. Remove the cover from the battery compartment.
2. Insert the SIM card in the SIM card slot.
3. Insert the battery connection cable into the battery port.
4. Place the battery in the battery slot and replace the battery cover.



4

Connect the Device to a Phone

1. Unplug your phone from your home's phone wall jack.



2. Plug your phone into the "Phone 1" port on the WF720, using your existing phone cable or included phone cable.

NOTE: Put the device at least 2.5 meters away from the connected phone, TV sets, radio and other electronic devices to avoid electromagnetic interference.

DECT (Digital Enhanced Cordless Telecommunications)

Phone: To avoid electromagnetic interference between DECT phone and the device, be sure the distance between DECT phone and the device is 0.5 meter at least.

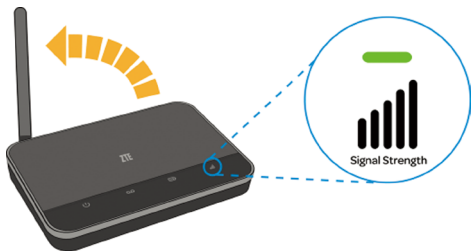
Turn on Your Device

1. Plug the power adapter into an electrical wall outlet.
2. Insert the small end of the power adapter into the Power port on the back of your device.
3. Press and hold the power button about 8 seconds until the signal strength light comes on.



Check the Wireless Signal

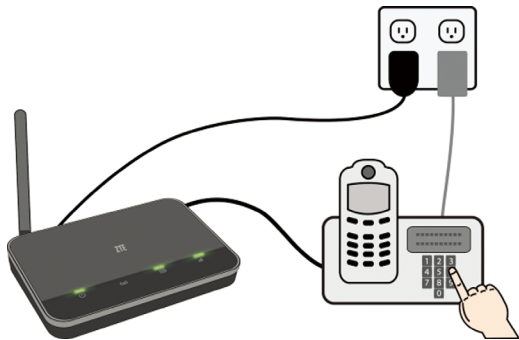
1. Raise antenna to an upright position.
2. Confirm signal strength light is green for optimal performance.



Make a Call

Make a call from your connected home phone.

NOTE: If you have a cordless phone, keep it plugged into a power outlet.



PIN Lock

Refer to the following table to check your SIM card status, and perform the corresponding action.

SIM Status	Light Indicator	Action
PIN Locked	Signal indicator: No colour; Battery Indicator: Green blinking	Enter PIN code and then the “#” Key.
PUK locked	Signal indicator: No colour; Battery Indicator: Yellow blinking	Enter PUK code, the “*” Key, New PIN, the “*” Key again, New PIN again, and then the “#” Key.
SIM card permanently locked	Signal indicator: No colour; Battery Indicator: Red blinking	Contact your service provider.

NOTE: When you enter wrong PIN code for 3 times, the SIM card will be PUK locked; When you enter wrong PUK code for 10 times, the SIM card will be permanently locked.

Useful Tips

- Dial “1” to access your voicemail. To access or set-up your voice mail, simply press and hold the “1” key, or press *98.
- The “Phone 2” port can be used to connect an additional phone, or cordless base station. All telephones connected to the wireless home phone base station will use the same telephone number.

For more information, please refer to the detailed User Guide online at www.rogers.com/userguide.com or www.fido.ca