



Micro Polaris Watercraft

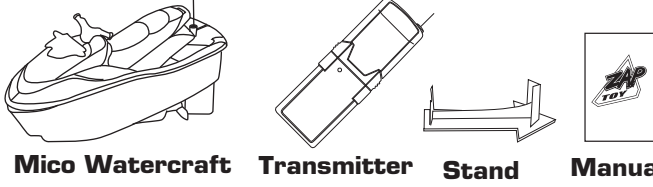
#1081

Instruction Manual

Please read through this instruction manual carefully before starting to operate.

Please ensure to remove all accessories and components from packaging.

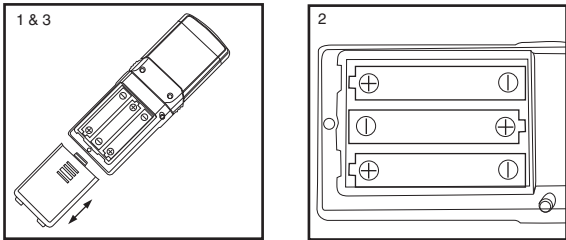
1. What is in the package



2. Battery installation

Recommended to use alkaline batteries for best performance, 3 X AAA (1.5V) batteries. (included)

1. Remove battery compartment cover located on the back of the transmitter.
2. Insert 3 X AAA (1.5V) batteries into the transmitter following the +/- marking.
3. Replace the battery cover.



HELPFUL HINTS:

- Do not expose the boat to extreme temperatures.
- If the boat does not respond to the transmitter, move closer to the boats and try again.
- If the boat starts to lose power. It may experience loss of performance ability. If this happens. simply recharge your boat again.
- When the transmitter range decreases, replace the battery in the controller.

MAINTENANCE AND CARE:

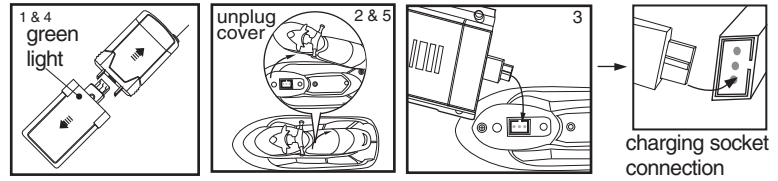
- If the boat becomes dirty, use a slightly dampened cloth to wipe off the dirt and filth. Then use a dry cloth to wipe off the moisture.
- To remove dust particles, tie a small bit of cloth to the tip of a toothpick, tweezers, etc, and wipe off.
- Do not use chemicals. The body of the boat can melt and cause machine troubles.
- Be sure of remove the batteries from the transmitter when storing the product away.
- Keep this Instruction Manual carefully for future use.

CAUTION:

- Do not operate your boat where there are water plants, rubbish, filth, or other obstacles in the pond.
- Do not play where the water current is strong or when the wind is blowing strongly.
- Do not play in ocean water, because salt water can cause rusting.
- Do not play in the thunderstorms.
- It is extremely dangerous to touch the propeller while it is spinning.
- The toy is designed for indoor use only. Outdoors use may lead to malfunction caused by dirt or waste.
- Non-rechargeable batteries are not to be recharged
- Rechargeable batteries are to be removed from the toy being charged,
- Rechargeable batteries are only to be charged under adult supervision,
- Different types of batteries or new and used batteries are not to be mixed
- Only batteries of the same or equivalent type as recommended are to be used.
- Batteries are to be inserted with the correct polarity.
- Exhausted batteries are to be removed from the toy
- The supply terminals are not to be short-circuited.
- The toy is to be operated in water only when fully assembled

3. Charging Your Micro Boat

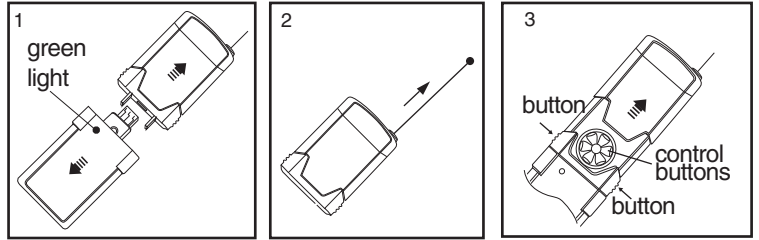
1. Disconnect transmitter into 2 separate units. The charger is the unit with 3 X AAA (1.5V) batteries installed.
2. Unplug the boat's charging socket cover.
3. Insert the charger into the charging socket.
4. When green light on the charger goes out, boat is charged.
5. Remove the charger, and re-plug the boat socket cover to prevent water from entering.



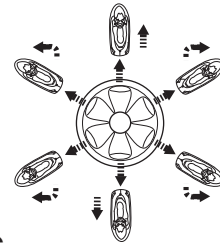
Attention : make sure the charging connector is in-line with the boat socket, incorrect insertion will damage the charging socket.

4. Racing Your Micro Boat

1. Re-connect the charger unit into the transmitter to become a transmitter unit.
2. Extend the transmitter antenna to its full length.
3. Press buttons at both sides of the transmitter to pop up the cover to show control buttons.
4. Before racing your boat, make sure that the antenna is standing vertically upright for better signal receiving.



5. How to play



TROUBLE SHOOTING

| Problem | Cause | Correction |
|--------------------|--|---|
| Boat drives slowly | - Weak rechargeable batteries in the boat. | - Recharge the boat with the charger. |
| Poor range control | - Weak batteries in transmitter - Strong interference at the surrounded area. | - Replace with new batteries - Move to a better location to drive your boat. |

Warning:

Changes or modifications to this unit not expressly approved by the party responsible for compliance could void the user's authority to operate the equipment

NOTE: This equipment has been tested and found to comply with the limits for a Class B digital device, pursuant to Part 15 of FCC Rules and R&TTE Directive 1999/5/EC. These limits are designed to provide reasonable protection against harmful interference in a residential installation. This equipment generates, uses and can radiate radio frequency energy and, if not installed and used in accordance with the instructions, may cause harmful interference to the radio communications. However, there is no guarantee that interference will not occur in a particular installation. If this equipment does cause harmful interference to radio or television reception, which can be determined by turning the equipment off and on, the user is encouraged to try to correct the interference by one or more of the following measures:

- Reorient or relocate the receiving antenna.
- Increase the separation between the equipment and receiver.
- Connect the equipment into an outlet on a circuit different from that to which the receiver is needed.
- Consult the dealer or an experienced radio/TV technician for help.

THIS PRODUCT IS FOR THE USE IN U.K., SPAIN, GERMANY, FRANCE, BELGIUM, ITALY, SWITZERLAND, THE NETHERLANDS, DENMARK, U.S., CANADA AND PORTUGAL.

CC0197

Another Quality Product From



English
NO. 1081
ZAP TOYS 2004
MADE IN CHINA
printed in china