

Report No.14016796 001

Appendix 8

User Manual

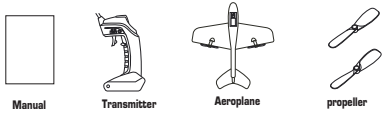
FCCID: NEX-5001-27TX

#5001

Instruction Manual

Please read through this instruction manual carefully before starting to operate. Please ensure to remove all accessories and components from packaging.

What is required to play



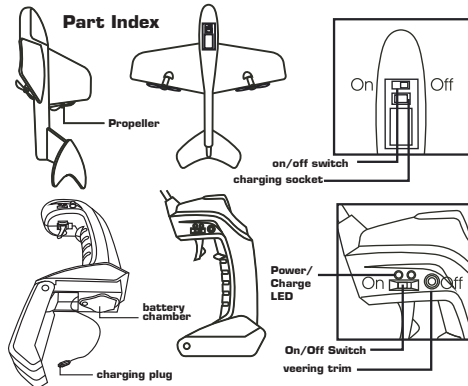
Battery requirements

Recommended to use alkaline batteries for best performance
Aeroplane : Li-poly battery (included in the aeroplane)
Transmitter : 6 x 1.5V (AA) (006P , 6F2Z) size batteries.

Product features:

- 1) Full function digital proportion remote control.
- 2) Accurate speed control.
- 3) Light weight body and long lasting operation. (Li-Poly battery)
- 4) Unique body material with outstanding shock-proof functionality.
- 5) Easy operation under indoor/outdoor environment.
- 6) Smooth veering to the left and right.
- 7) Integrated with 1 band 3 signal for 3 players.

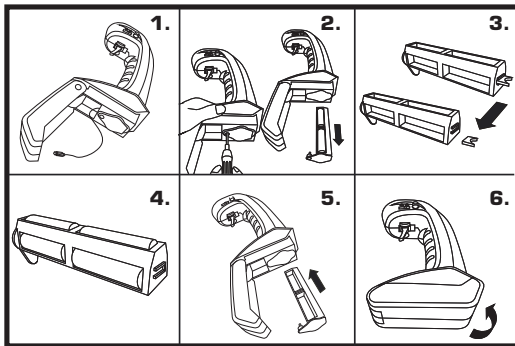
Part Index



Preparations before flying:

Batteries Installation - Remote Control

- 1) Open the battery chamber cover as shown in (1).
- 2) Turn the Philip's type screwdriver anti-clockwise to loosen the battery chamber as shown in (2).
- 3) Take out the battery chamber, remove the part at the end this part will be useless as shown in (3).
- 4) Place 6pcs of AA batteries into the battery chamber according to correct polarity as shown in (4).
- 5) Re-install the battery chamber into the remote control. Tighten the chamber with a Philip's type screwdriver by screwing clockwise as shown in (5).
- 6) Close the battery chamber cover as shown in (6).



Recharging the Device

- 1) Switch off the power of the device and push the power switch of the remote control to OFF.
- 2) Connect the plug of the remote control charger to the charging socket on the device, the green LED light on the remote control charger indicates that power charging is in progress.
- 3) The green LED light goes off automatically when charging process is completed.
- 4) Disconnect the device from the plug, wind up the cable of the charger and place it back into the box, close the battery chamber cover.

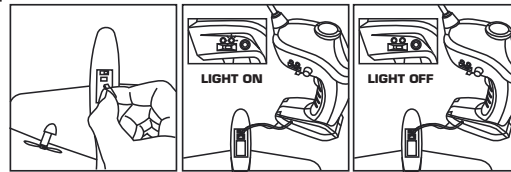


WARNING:
CRACKING HAZARD - Small parts.
Not for children under 3 years.

Do not touch the propeller when operating.
Do not use the aircraft.
Supervision of adult or expert required when the vehicle is in use.

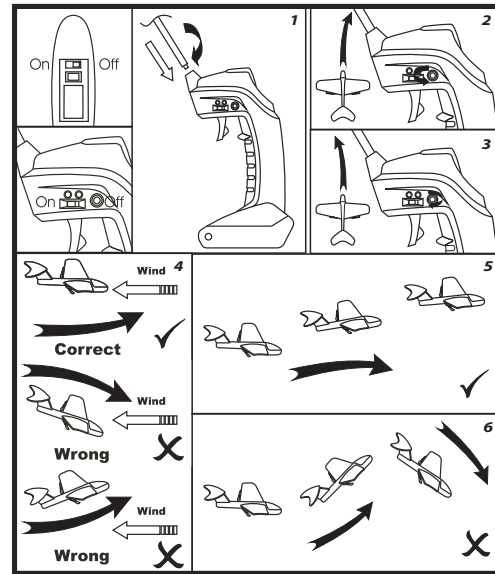
Note:

- 1) The charging process takes approximately 20 - 30 minutes.
 - 2) The green light of the remote control charger automatically goes off when the batteries are full.
- Operation of the device can last for approximately 10 minutes.
The remote control charger features a smart security function which automatically terminate the charging process when it reaches 4.25V, charging duration may therefore varies with the amount of power remains in the batteries.



How to play

- 1) Install the antenna to the remote control and screw tight. Push the power switch of the device to ON. Push the power switch of the remote control to ON. The red light lights up.
- 2) To ensure horizontal flying place the remote control vertically. Pull the control trigger back to approximately 1/3 until the aeroplane starts flying. Toss the aeroplane horizontally with your left hand along line of eyesight. When flying to the right, adjust the veering fine toner to the left; when flying to the left, adjust the veering fine toner to the right. Release the control trigger to stop the aeroplane. The left and right controls can be adjusted by the veering trims on the controller to ensure straight alignment.
- 3) Repeat the above steps to keep the aeroplane flying straight.
- 4) When tossing the aeroplane, make sure that it is facing a slight breeze and flying horizontally.
- 5) Do not toss the aeroplane vertically upwards as it may cause it to fall immediately and get damaged eventually.
- 6) When angle of elevation is too wide lower the speed by utilizing the panel. On the contrary, increase speed by utilizing the panel when the aeroplane tends to nosedive.



Choosing the right venue and weather:

- 1) Choose a spacious, obstacle-free area when operating indoor, ensure that the device is operating away from electronic fans/air conditioner as these facilities may affect air flow.
- 2) Choose a fine, calm or slightly breezy day when operating outdoor. (A condition where fog moves while tree leaves remain steady.)
- 3) Warning: Power consumption will increase when operating in strong wind, it may also affect proper control of the aeroplane or the device may even get puff off or damage.
- 4) Operation on grass lawn suggested as this can avoid the danger of being damaged by surrounding objects.
- 5) Operation away from crowds, ponds, residential building area and forests suggested.
- 6) Do not operate under extremely hot (over 50°) or extremely cold (under 0°) temperature.
- 7) Do not operate in rainy or snowy days or near high voltage cables as the user may be exposed to risk of electric shock.

Safe Usage and Maintenance:

- In case the toy is not in use for a long time, remove batteries from the device. (Applicable to remote control only)
- Wipe the toy with a clean and wet cloth.
- Ensure that the toy is placed away from heat source.
- Do not place toy in water as this may cause short circuit of the circuit board.
- Do not expose the plane to extreme temperatures
- Always keep the plane clean, use a dampened cloth to clean, followed by a dry cloth to wipe water away. Never use chemical to clean the product.
- Long operation time may generate high heat levels causing wear and tear.
- To extend product life, players are recommended to allow a 10 minute cool down period before installing new batteries.
- Keep this instruction manual in place for future use.

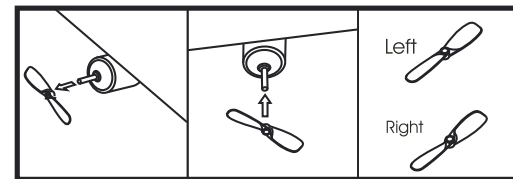
Set up and usage of the remote control

Manual control trigger	Remote control	Movements
<p>Pull steadily to increase angle of trigger</p>		<p>Take off/Fly upward</p>
<p>Relax steadily to reduce angle of trigger</p>		<p>Lower speed/Landing</p>
<p>To fly steadily, keep angle of the trigger unchanged.</p>	<p>Tilt the remote control 45° To the left sharply</p>	<p>turn left</p>
<p>To fly steadily, keep angle of the trigger unchanged</p>	<p>Tilt the remote control 45° To the right sharply.</p>	<p>turn right</p>

Replacement of propeller

Follow steps below when changing to a new propeller in case of damage:

- Pull out the top of the propeller and remove the damaged part.
- Insert new propeller onto the steel axle properly.
- Place propeller according to markings of left and right and also place side with groove facing outward away from motor



Caution

- Supervision from parents or adults required when placing or installing batteries.
- Static environment may cause product failure. In this case user will need to reset the product. Special reminder for adults (parents):
- Perform regular checking of socket and surrounding accessories. If any damage is found in the remote control charger, stop using the device until it is completely fixed.
- This toy is not suitable for children under 8 years old.
- Only use the charger provided with the product when recharging.
- Do not attempt to use the remote control charger with any other batteries.
- The plane and transmitter are not shock resistant
- Do not play in the thunderstorms
- Do not place the plane or transmitter near sources of heat or in direct sunlight for long periods of time.
- Do not operate the plane when small children are present
- Do not mix old and new batteries together. Do not mix battery types or brands.
- Non-rechargeable batteries should not be recharged.
- Rechargeable batteries should be removed from the toy while being charged.
- Rechargeable batteries should only be charged under adult supervision.
- Only batteries of the same or compatible type as recommended should be used.
- Batteries should be inserted with the correct polarity.
- Exhausted batteries should be removed from the toy.
- The supply terminals should not be short-circuited.
- Do not touch the motor after play, as it may become hot after long operation time.

Batteries Warning:

- Do not recharge non-rechargeable batteries.
- Remove the chargeable batteries from the toy before charging. (Applicable to remote control only)
- Use of charger is limited to adults.
- Do not mix different types of batteries together as well as old and new batteries. (Applicable to remote control only)
- Only batteries of the same type can be recharged together.
- Batteries should be inserted according to the correct polarity.
- Always remove exhausted batteries from the toy. (Applicable to remote control only)
- Do not connect power terminal to the circuit board.
- This product comes with 1PC Li-Poly batteries. For safe usage, please note the following things:
- Do not discard batteries in fire or near heat source.
- Do not place batteries near heat source such as fire or electric heating device.
- Do not ram or pinch batteries against hard surfaces.
- Do not place batteries in water. Batteries should be stored in cool and dry places.
- Only use the charger provided with the product when recharging batteries.
- Never disassemble batteries.
- Do not touch the power socket.
- Do not weld batteries directly or pierce batteries with pin or other sharp objects.
- Do not carry batteries with metallic objects such as necklaces/hair clips.
- Do not re-install or alter the composition of batteries.
- Batteries should be recharged every six months. (when not in use)
- Switch off the power after use. Used batteries should be stored in recycle bags or separate bags.

TROUBLE SHOOTING

Problem	Reason	Solution
Propeller not spinning or spinning slowly.	1) ON/OFF switch is positioned at OFF. 2) Batteries not yet saturated. The veering fine toner on the remote control is in the wrong position.	1) Switch the power to ON. 2) Recharge batteries. Adjust the veering fine toner of the remote control
Fail to take off or descending slowly when flying.	1) The aeroplane is not facing the wind during take off. 2) Ensure the batteries have enough power. 3) The elevator is in the wrong angle or wrong speed.	1) Face the wing when tossing the aeroplane before take off. 2) Recharge the device. 3) Adjust the control stick to the left technically (Do not hold tight, control by slightly tapping the stick.) in order to increase or lower flying speed.
Falling before the ascending stage after take off	Battery low.	Recharge batteries.
No response or slow response when operating with remote control	Affected by high frequency radiation from the surrounding high voltage cable/inductor/special building.	Move the aeroplane away from the interference or operate the product in other places.
Loss control.	1) Another remote control of the same frequency or signal is operating another product or this product. 2) Location of the aeroplane is beyond the operation coverage of the remote control.	1) Operate this product in an interference-free environment. 2) Ensure that the antenna is extended to full length; the aeroplane is operating within remote control coverage. The remote control coverage is up to 50M.

NOTE: This equipment has been tested and found to comply with the limits for a Class B digital device, pursuant to Part 15 of FCC Rules and R&TTE Directive 1999/5/EC. These limits are designed to provide reasonable protection against harmful interference in a residential installation. This equipment generates, uses and can radiate radio frequency energy and, if not installed and used in accordance with the instructions, may cause harmful interference to the radio communications. However, there is no guarantee that interference will not occur in a particular installation. If this equipment does cause harmful interference to radio or television reception, which can be determined by turning the equipment off and on, the user is encouraged to try to correct the interference by one or more of the following measures:

- Reorient or relocate the receiving antenna.
- Increase the separation between the equipment and receiver.
- Connect the equipment into an outlet on a circuit different from that to which the receiver is connected.
- Consult the dealer or an experienced radio/TV technician for help.

Please read these instructions carefully before use!

Hereby, Zaptoys International, declares that this product is in compliance with the essential requirements and other relevant provisions of Directive 1999/5/EC.

Warning:

Changes or modifications to this unit not expressly approved by the party responsible for compliance could void the user's authority to operate the equipment

THIS PRODUCT IS FOR THE USE IN U.K., SPAIN, GERMANY, FRANCE, BELGIUM, ITALY, SWITZERLAND, THE NETHERLANDS, DENMARK, U.S., CANADA AND PORTUGAL.

CE 0197



English
NO.5001
©ZAPTOYS 2007
MADE IN CHINA