



#9471

**Instruction Manual**

Please read through this instruction manual, carefully before starting to operate. Please ensure to remove all accessories and components from packaging.

**What is in the box**



**Battery requirements**

Vehicle : NiCd rechargeable battery pack (9.6V ).  
Transmitter : 1 x 9V (006P , 6F22) size battery.

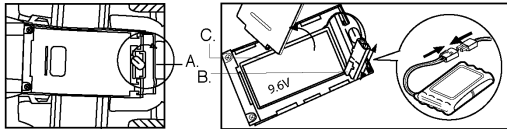
**Battery installation**

**Transmitter**

1. Remove battery cover located at the back.
2. Insert 1 X 9V battery following the + / - marking.
3. Replace battery cover.

**Power Pack Installation**

- A. Open by turning lock and lifting cover off.
- B. Join the pack connector plug into compartment plug receptacle and secure tightly.
- C. Drop pack into position, close and lock cover. When disconnecting pack DO NOT PULL ON WIRES.



**Charging Battery**

Insert charger plug into suitable household outlet.

Connect battery pack to charger clip

**Charging time - First charge 7 hours (not more than 8 hours)**  
- Recharge 4 hours.

**REMARKS :** New battery packs need charging and a pack will be fully charged after 7 hours. Extended charging does not improve or increase running time. 4 hours is required for recharging the battery. After charging, please disconnect battery pack and unplug charger. Running time is between 20 - 30 minutes, but can vary from 10 - 20 minutes, depending on the size, weight, speed of the vehicle and terrain. The vehicle will quit suddenly when power is completely utilised. Wait a few minutes for pack to cool. Remove from vehicle and then re-charge.

**CAUTION!**

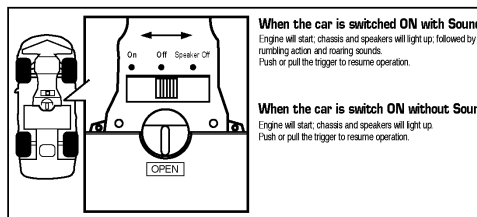
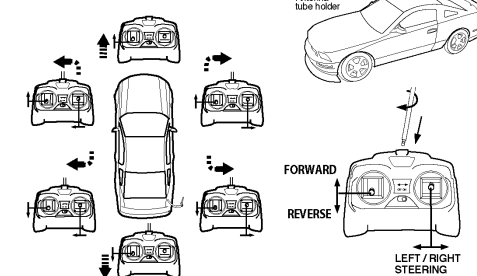
- Leakage may occur if battery is not used for an extended period of time.
- Be careful when disconnecting unit. Do not pull on wires.
- Too much force when disconnecting wire may cause short circuit.
- It is suggested you wait for 20 - 25 minutes after use before recharging the battery pack. This will give battery pack time to cool off.
- Recharging a warm battery pack will shorten its life.
- Keep away from fire or high temperature.
- Do not charge leaking or damaged batteries.
- Unplug battery pack when not in use.
- Do not dispose battery pack in fire as this may cause an explosion and serious injury.
- Dispose NiCd batteries properly. Do not disassemble.
- You must always remove battery pack from the vehicle prior to charging.
- The battery charger is not for any other use except as instructed.
- It is suggested that adults periodically check wires and plugs.
- Non-rechargeable batteries are not to be recharged.
- Rechargeable batteries are to be removed from the toy being charged.
- Only batteries of the same or equivalent type as recommended are to be used.
- Batteries are to be inserted with the correct polarity.
- Exhausted batteries are to be removed from the toy.
- The supply terminals are not to be short-circuited.
- The batteries should be recharged by adults only.

**MAINTENANCE AND CARE**

- Never drive the vehicle on a wet floor, on sand, or in mud, rain or snow. These can damage it.
- Do not expose the vehicle to extreme temperatures.
- Be sure to remove the batteries from the vehicle and transmitter when storing the product away.
- To protect the vehicle's wheel mechanism from lint, thread, hair, and dust particles, you can use a small brush, tweezers or tie a small bit of cloth to the tip of a toothpick, etc., and wipe off.
- Always keep vehicle clean, use a dampened cloth to wipe off, and then wipe all the water off with a dry cloth. Never use chemicals to clean the product.
- Keep this instruction manual carefully for future use.
- Avoid holding the wheels when rotating, this will cause the electronic components short-circuit, overheating and will cause malfunction.
- Chargers used with the toy are to be regularly examined for damage to the cord, plug, enclosure and other parts, and that, in the event of such damage, the toy must not be used with this charger until the damage has been repaired.

**How to Play**

1. Insert antenna wire through the hollow tube. Avoid pulling wire too tight. Tie a knot on top to secure.
2. Turn switch to "ON" position for power. You are set to run!



**When the car is switched ON with Sound**  
Engine will start; chassis and speakers will light up, followed by rumbling action and roaring sounds.  
Push or pull the trigger to resume operation.

**When the car is switch ON without Sound**  
Engine will start; chassis and speakers will light up.  
Push or pull the trigger to resume operation.



**Trim Switch Control**

Trim switch is located on the underside of the vehicle, between the two front wheels, and is used to align the wheels for consistent straight line driving.

**HELPFUL HINTS:**

- If vehicle does not respond to the transmitter, move closer to the vehicle and try again.
- If vehicle starts to lose power, it may experience loss of performance ability.
- If this happens, simply replace the battery pack.
- If the vehicle moves slowly, try changing the batteries and check the wheel mechanisms for lint, thread, hair or dust.
- When the transmitter range decreases, replace the battery in the controller.
- If someone uses a CB nearby, it might interfere with control of the car. If this happens, move the car and transmitter away from the CB.

**TROUBLE SHOOTING:**

Problem	Causes	Correction
Vehicle doesn't move	- Power switch is turned OFF. - Vehicle is too far away from the controller. - The metal tab in the battery is flattened and not touching the batteries installed.	- Turn the power switch ON. - Bring the vehicle closer to the controller. - Lift up the metal tab so that it touches the tip of the battery.
Loss of Control	- Another radio control vehicle using the same frequency is operated near your vehicle	- Race against other vehicles using different frequencies or channel.
Vehicle drives slowly	- Weak batteries in the vehicle	- Recharge the battery pack, following the + / - marking.
Poor range control	- Weak battery in the transmitter. - Strong interference at the surrounded area.	- Replace the battery pack - Move to a better location to Drive your vehicle.

**Warning:**

Changes or modifications to this unit not expressly approved by the party responsible for compliance could void the user's authority to operate the equipment

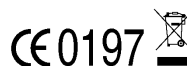
**NOTE:** This equipment has been tested and found to comply with the limits for a Class B digital device, pursuant to Part 15 of FCC Rules and R&TTE Directive 1999/5/EC. These limits are designed to provide reasonable protection against harmful interference in a residential installation. This equipment generates, uses and can radiate radio frequency energy and, if not installed and used in accordance with the instructions, may cause harmful interference to the radio communications. However, there is no guarantee that interference will not occur in a particular installation. If this equipment does cause harmful interference to radio or television reception, which can be determined by turning the equipment off and on, the user is encouraged to try to correct the interference by one or more of the following measures:

- Reorient or relocate the receiving antenna.
- Increase the separation between the equipment and receiver.
- Connect the equipment into an outlet on a circuit different from that to which the receiver is needed.
- Consult the dealer or an experienced radio/TV technician for help.

**THIS PRODUCT IS FOR THE USE IN U.K., SPAIN, GERMANY, FRANCE, BELGIUM, ITALY, SWITZERLAND, THE NETHERLANDS, DENMARK, U.S., CANADA AND PORTUGAL.**



Ford, Ford Mustang GT, and the Ford Oval are registered trademarks owned and licensed by Ford Motor Company



English  
NO.9471  
©ZAPTOYS 2005  
MADE IN CHINA  
Printed in China

The applicant declared that this user manual is of model 9471 which consists of the transmitter 9303S.