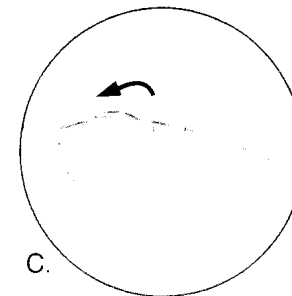
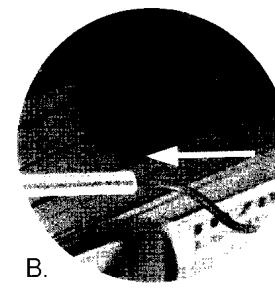
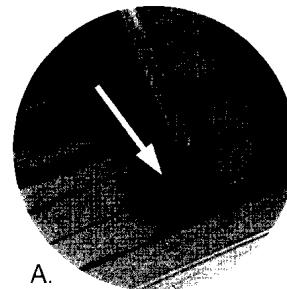


BATTLE MODE : GAMING FUNCTION

INSTALLATION OF VEHICLE ANTENNA:

- Insert antenna wire through hollow tube.
- Insert tube into hole of vehicle. **AVOID PULLING WIRE TOO TIGHT**
- Tie a knot on top of wire to secure.



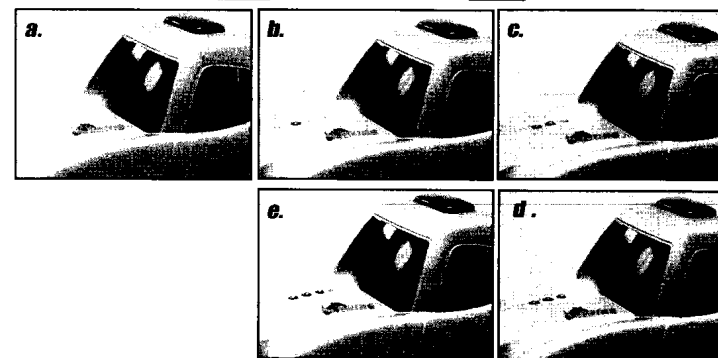
A.

B.

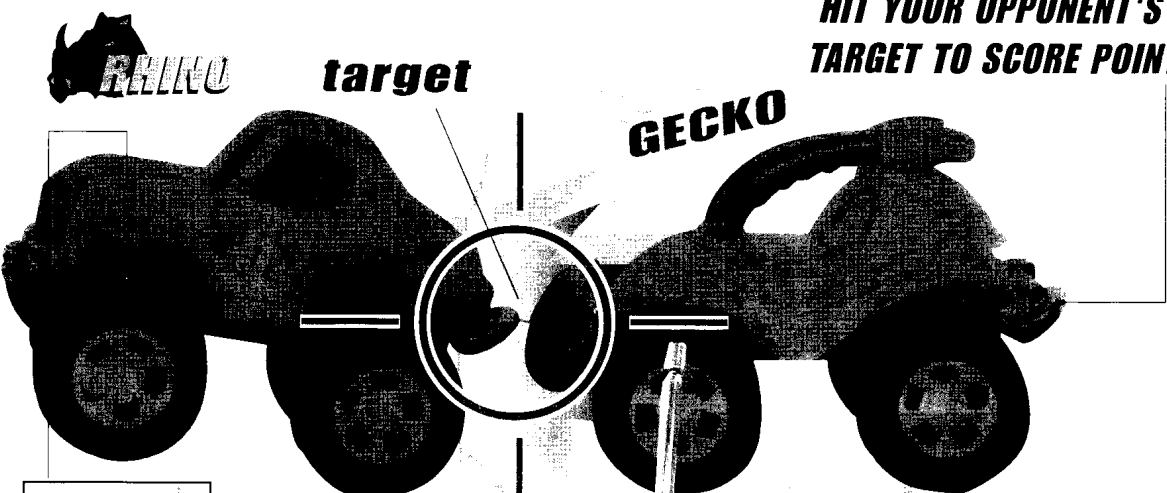
C.

HOW TO PLAY:

- Switch car and transmitter on , Each player begins with 5 lives.
- Each time the target is struck one life is lost. (one LED light will turn off)



**HIT YOUR OPPONENT'S
TARGET TO SCORE POINTS**



target

GECKO

5 lives (represented
by 5 lit LED lights)

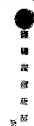
**FIRST PLAYER TO GET 5 POINTS.
WINS!**

HOW TO OPERATE:

FORWARD / REVERSE



ON / OFF SWITCH



LEFT / RIGHT STEERING



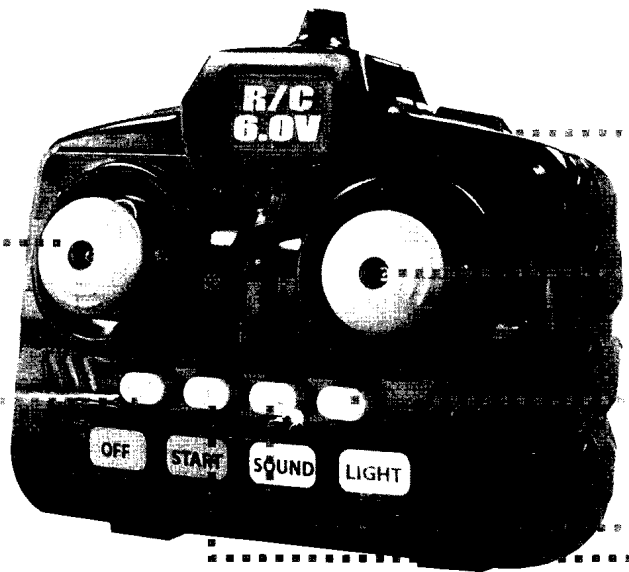
LIGHTS SWITCH



SOUND SWITCH

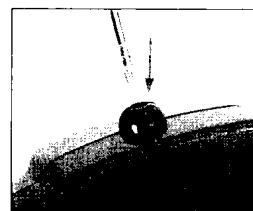


START SWITCH

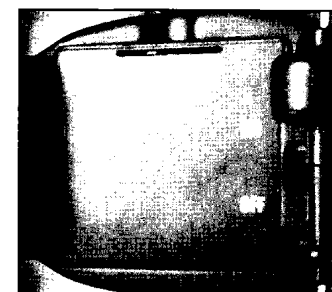


3. First player to lose all five lives will shut down.

4. To play again simply reset the on/off switch of the cars.



In a clockwise direction, screw the threaded end of antenna into cavity located on top of transmitter. Ensure antenna is tightly screwed for good transmission.



OPTIMAL OPERATING CONDITIONS AND MAINTENANCE OF YOUR VEHICLE:

1. Avoid using vehicle on wet surfaces or in rain.
2. Avoid using vehicle on sandy or dusty areas.
3. Avoid using vehicle for long periods under direct sunlight. Sunlight or excessive heat may damage sensitive electronic instruments.
4. Store vehicle and transmitter in dry cool places away from heaters or warm areas.
5. Collision with hard surface may damage vehicle.
6. Vehicle will not perform as well on thick carpet or dusty floors.
7. Avoid running two vehicles of the same frequency (Purchase two vehicles with different frequencies instead.)
8. Always brush your vehicle after use to remove dust. Keep vehicle clean.
9. Always wipe vehicle with soft rag or cloth. Avoid cleaning vehicle with water or any chemicals

TROUBLE SHOOTING:

PROBLEM : VEHICLE DOES NOT MOVE

1. Are the + and -s contacts correctly matched in transmitter and car?
2. Are the metal contact tabs touching, rusty or dirty in transmitter?
3. Are there batteries in vehicle and transmitter?
4. Is the power switch on vehicle and transmitter turned on?
5. Is the battery / power pack weak or out of power?

PROBLEM : VEHICLE RUNS SLOWLY

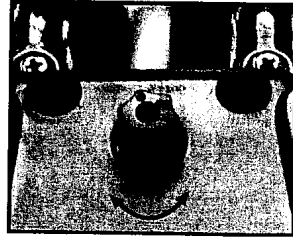
1. Are the batteries in the vehicle and transmitter worn out ?
2. Is there something obstructing the movement of the vehicle ?

PROBLEM : VEHICLE MOVES BY ITSELF

1. Is there R/F interference in the area?
2. Is there another R/F vehicle with the same frequency close by?

TRIM SWITCH CONTROL:

The switch is located on the underside of the vehicle, between the two front wheels and is used to align the wheels for constant straight line driving.



Warning:

Changes or modifications to this unit not expressly approved by the party responsible for compliance could void the user's authority to operate the equipment

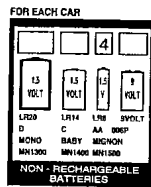
NOTE: This equipment has been tested and found to comply with the limits for a Class B digital device, pursuant to Part 15 of FCC Rules and R&TTE Directive 1999/5/EC. These limits are designed to provide reasonable protection against harmful interference in a residential installation. This equipment generates, uses and can radiate radio frequency energy and, if not installed and used in accordance with the instructions, may cause harmful interference the radio communications.

However, there is no guarantee that interference will not occur in a particular installation. If this equipment does cause harmful interference to radio or television reception, which can be determined by turning the equipment off and on, the user is encouraged to try to correct the interference by one or more of the following measures:

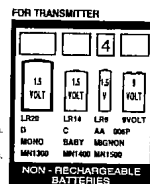
Reorient or relocate the receiving antenna.

- Increase the separation between the equipment and receiver.
- Connect the equipment into an outlet on a circuit different from that to which the receiver is needed.
- Consult the dealer or an experienced radio/TV technician for help.

THIS PRODUCT IS FOR THE USE IN, U.K., SPAIN, GERMANY, FRANCE, BELGIUM, ITALY, SWITZERLAND, THE NETHERLANDS AND DENMARK.



- Ⓚ not included.
- Ⓛ nicht enthalten.
- Ⓧ no includes.
- Ⓝ non compris.
- Ⓛ niet Includer.
- Ⓛ non include.



- Ⓚ not included.
- Ⓛ nicht enthalten.
- Ⓧ no includes.
- Ⓝ non compris.
- Ⓛ niet Includer.
- Ⓛ non include.



©ZAPTOYS 2001
MADE IN CHINA

For over 7 years of age

Instruction Manual

6.0V FULL FUNCTION RADIO CONTROL

BUMP & RUN

9343

BUMP & RUN

8349

Twin Pack



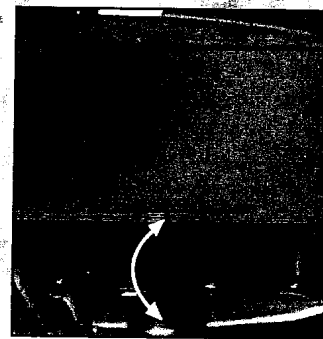
Instruction Manual

PLEASE ENSURE TO REMOVE ALL ACCESSORIES AND COMPONENTS FROM THE STYROFOAM PACKING

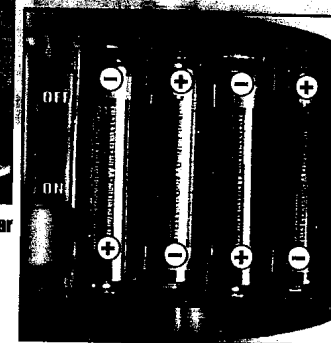
Important Battery Information:

- Do not mix old and new batteries.
- Do not mix alkaline, standard (carbon zinc) or rechargeable (nickel-cadmium) batteries
- Rechargeable batteries should be replaced by adults.
- Batteries must be inserted with correct polarity.
- Non - rechargeable batteries cannot be recharged. Only batteries of the same or equivalent type as recommended, should be used.
- Exhausted batteries must be removed from the toy.
- The supply terminals must not be short-circuited.

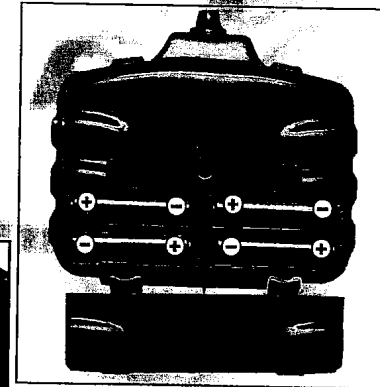
BATTERY INSTALLATION:



1. Open battery cover on underside of car



2. Insert 4 'AA' batteries, ensuring placement of batteries corresponds to the correct polarity



3. Insert 4 'AA' size batteries into transmitter

CE0125!



Another Quality Product From