

## Battery Life

Extend battery life by switching off when not in use.

## Interference

Advisable not to use vehicle close to high tension wires or CB radios.

## HINTS FOR MAINTENANCE

Radio waves interference may affect behaviour of the vehicle. Special care for your vehicle is mentioned below.

Do not abuse your vehicle.

- Avoid heat, water, sand and high impact collisions. Off road vehicles run easily on grassy surfaces.
- Avoid using vehicle on wet surfaces or rain.
- Avoid using vehicle on sandy or dusty areas.
- Avoid using vehicle for long periods under direct sunlight. Sunlight or excessive heat may damage sensitive / electronic instruments.
- Store vehicle transmitter in dry cool places away from heaters or warm areas.
- Collision with hard surface may damage vehicle.
- Vehicle will not perform on thick carpet or dusty floors.
- Avoid running two vehicles of the same frequency ( Purchase two vehicles with different frequencies instead.)
- Always brush your vehicle after use to remove dust. Keep vehicle clean.
- Always wipe vehicle with soft rag or cloth. Avoid cleaning vehicle with water or any chemicals

## TROUBLE SHOOTING AND CARE FOR R/C VEHICLES

### PROBLEM! VEHICLE DOES NOT MOVE

- Are the + and -s contacts correctly matched in transmitter?
- Are the metal contact tabs touching, rusty or dirty in transmitter?
- Are there batteries in vehicle and transmitter?
- Is the power switch on vehicle and transmitter turned on?

### PROBLEM! VEHICLE RUNS SLOWLY

- The battery is weak or fading.
- Batteries are miss matched or old.

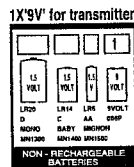
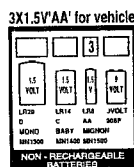
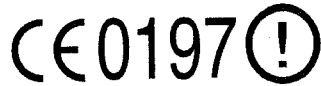
**Warning: Changes or modifications to this unit not expressly approved by the party responsible for compliance could void the user's authority to operate the equipment**

NOTE: This equipment has been tested and found to comply with the limits for a Class B digital device, pursuant to Part 15 of FCC Rules and R&TTE Directive 1999/5/EC. These limits are designed to provide reasonable protection against harmful interference in a residential installation. This equipment generates, uses and can radiate radio frequency energy and, if not installed and used in accordance with the instructions, may cause harmful interference to the radio communications.

However, there is no guarantee that interference will not occur in a particular installation. If this equipment does cause harmful interference to radio or television reception, which can be determined by turning the equipment off and on, the user is encouraged to try to correct the interference by one or more of the following measures:

- Reorient or relocate the receiving antenna.
- Increase the separation between the equipment and receiver.
- Connect the equipment into an outlet on a circuit different from that to which the receiver is needed.
- Consult the dealer or an experienced radio/TV technician for help.

THIS PRODUCT IS FOR THE USE IN U.K., SPAIN, GERMANY, FRANCE, BELGIUM, ITALY, SWITZERLAND, THE NETHERLANDS, DENMARK, PORTUGAL, U.S. AND CANADA.



printed in China

Another Quality Product From



NO.9344  
©ZAP TOYS 2002  
MADE IN CHINA

## Range

When vehicle goes beyond radio signal contact, loss of control or slowness will occur.  
Extend transmit antenna higher for re-contact.  
Ensure antenna is screwed on tightly.



1 : 20 SCALE  
For over 7 years of age

# MINI COOPER Instruction Manual

## 4.5V FULL FUNCTION RADIO CONTROL

The BMW logo, the BMW wordmark and the BMW model designations are trademarks of BMW Group and are used under license.

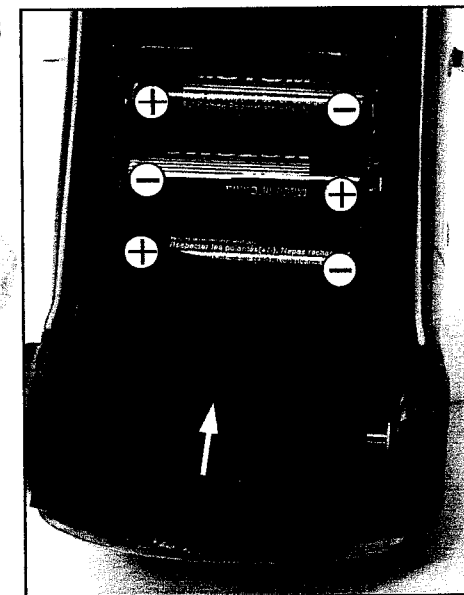
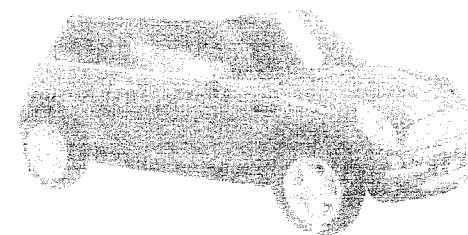
### #9344

### CAUTION

- Leakage may occur if battery not used for lengthy period of time.
- Be careful when disconnecting unit. Do not pull on wires.
- Too much force when disconnecting wire may cause short circuit.
- Keep away from fire or high temperature.
- Do not charge leaking or damaged batteries.
- Do not dispose battery pack in fire as this may cause an explosion and serious injury.
- Dispose NiCd batteries properly. Do not disassemble.
- It is suggested that parents periodically check wires and plugs.

### CAR BATTERY INSTALLATION AND ASSEMBLY

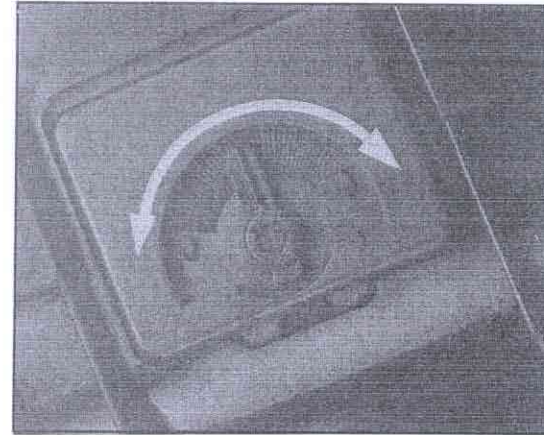
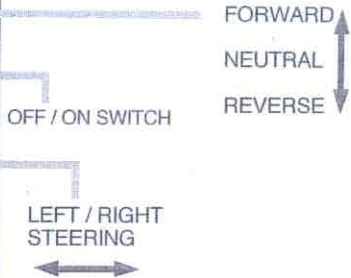
- a. Unscrew the battery cover and pull the cover downward
- b. INSTALL BATTERIES MAKING SURE THAT THE (+) AND (-) POLES OF THE BATTERIES ARE POSITIONED ACCURATELY





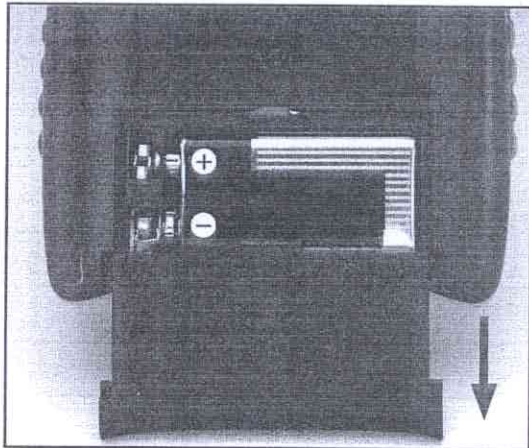
**OPERATION**

Turn switch to "on" for power. Switch off vehicle and transmitter after use. Remove all batteries for storage.



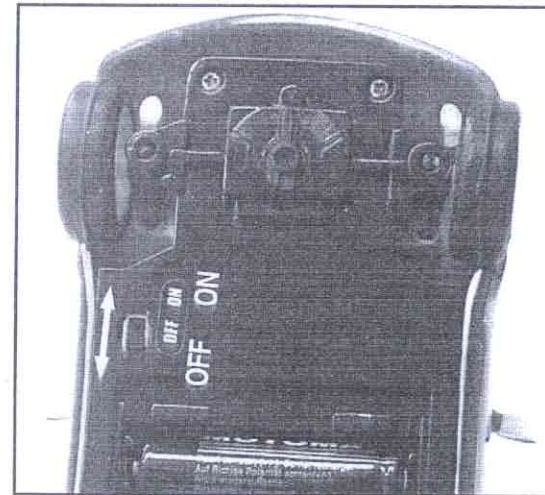
**TRIM SWITCH CONTROL**

The switch is located on the underside of the vehicle, between the two front wheels and is used to align the wheels for constant straight line driving.



**TRANSMITTER BATTERY INSTALLATION AND ASSEMBLY**

Insert one '9V' battery PROVIDED matching + and - signs.



Switch the vehicle on. It is now ready to run.