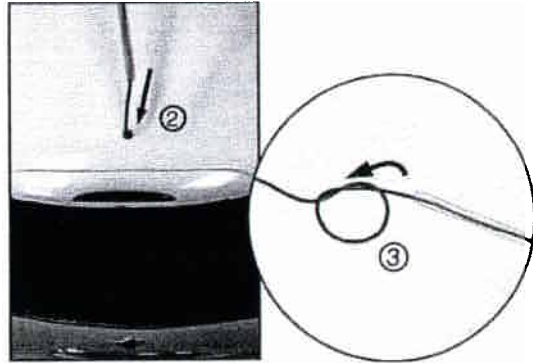
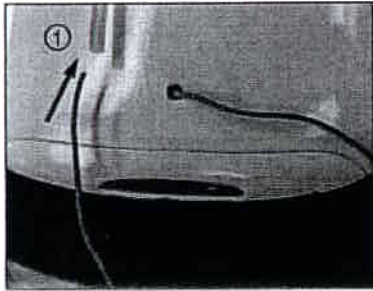


INSTALLATION OF VEHICLE ANTENNA

1. Insert antenna wire through plastic tube.
2. Insert tube into hole of vehicle.
3. Tie a knot at the end of wire to secure.

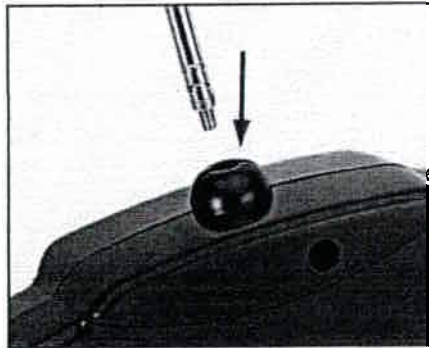


TRANSMITTER BATTERY INSTALLATION AND ASSEMBLY

- A. Insert one '9V' battery matching + and - signs.
- B. In a clockwise direction, screw the threaded end of antenna into cavity located on top of transmitter. Ensure antenna is tightly screwed for good transmission.



A.



B.

HOW TO OPERATE THE RADIO

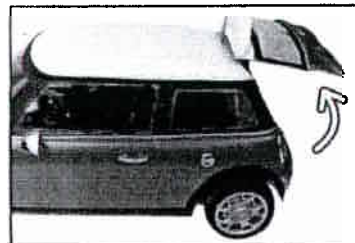
RADIO OFF/ON - Push the radio to "ON" position.

SCAN - Press "SCAN" button, the radio will search the channel automatically.

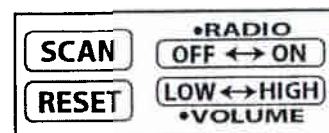
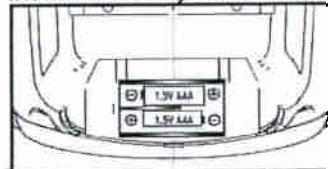
RESET - Press "RESET", the radio will go back to the first channel.

VOLUME - Push the volume button to select "HIGH" or "LOW" volume.

• Push the radio to "OFF" position after use.

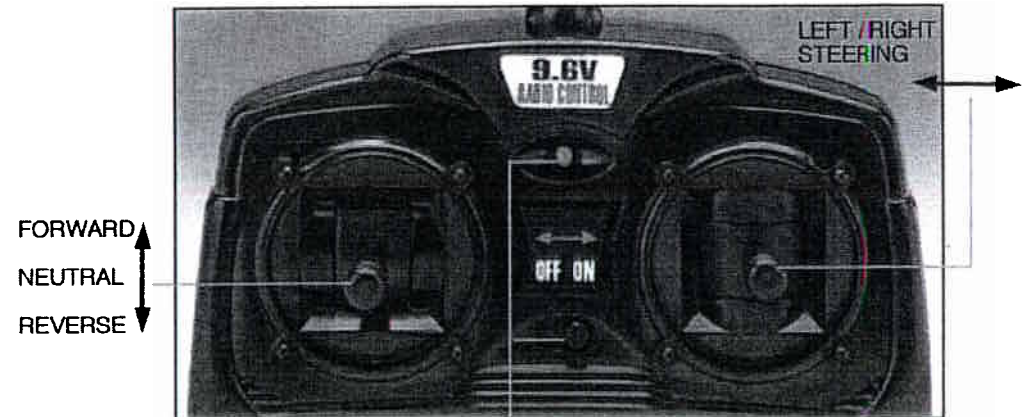


2 X 1.5V AAA battery for radio included



OPERATION

Turn switch to on position for power. Indicator light will come on. If not, check power of batteries. Extend the antenna to full length. Switch off vehicle and transmitter after use. Remove '9V' battery and rechargeable pack for storage.



OPERATION

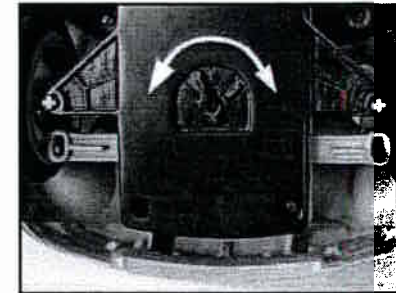
Switch the vehicle "ON", switch is located on underside of vehicle.



Switch the vehicle on. It is now ready to run.

TRIM SWITCH CONTROL

The switch is located on the underside of the vehicle, between the two front wheels and is used to align the wheels for consistent straight line driving.



COMMON PROBLEMS

EXHAUSTED OR WEAK POWER PACK

For high performance, recommend to start with fully charged pack. Semi or partially charged packs will perform inefficiently.

INSTALLATION OF POWER PACK

Ensure connector plugs are securely locked. When disconnecting, do not pull on wire, this may short circuit the system.

Battery Life

Extend battery life by switching off when not in use.

Interference

Advisable not to use vehicle close to high tension wires or CB radios.

HINTS FOR MAINTENANCE

Radio waves interference may affect behaviour of the vehicle. Special care for your vehicle is mentioned below.

Do not abuse your vehicle.

- Avoid heat, water, sand and high impact collisions. Off road vehicles run easily on grassy surfaces.
- Avoid using vehicle on wet surfaces or rain.
- Avoid using vehicle on sandy or dusty areas.
- Avoid using vehicle for long periods under direct sunlight. Sunlight or excessive heat may damage sensitive / electronic instruments.
- Store vehicle transmitter in dry cool places away from heaters or warm areas.
- Collision with hard surface may damage vehicle.
- Vehicle will not perform on thick carpet or dusty floors.
- Avoid running two vehicles of the same frequency.
- Always brush your vehicle after use to remove dust. Keep vehicle clean.
- Always wipe vehicle with soft rag or cloth. Avoid cleaning vehicle with water or any chemicals.

TROUBLE SHOOTING AND CARE FOR R/C VEHICLES

PROBLEM! VEHICLE DOES NOT MOVE

- Are the + and -s contacts correctly matched in transmitter?
- Are the metal contact tabs touching, rusty or dirty in transmitter?
- Are there batteries in vehicle and transmitter?
- Is the power switch on vehicle and transmitter turned on?
- Is the battery / power pack weak or out of power?

PROBLEM! VEHICLE RUNS SLOWLY

- The battery is weak or fading.
- The battery pack is worn out and needs to be replaced.
- Batteries are mis-matched or old.

TIME TO CHARGE!

Battery pack is uncharged when new. NiCd Batteries lose all power at once. Your vehicle will suddenly stop. If this is the case, the vehicle is not defective, it had just run out of power.

Range

When vehicle goes beyond radio signal contact, loss of control or slowness will occur. Extend transmit antenna higher for re-contact. Ensure antenna is screwed on tightly.

IF VEHICLE HAS A NOTICEABLE DROP IN PERFORMANCE, INCONSISTENT MOVEMENT OR FAILS TO RUN, RECHARGE POWER PACK AND / OR REPLACE A FRESH 9V BATTERY.



1:8 SCALE
For over 7 years of age

MINI COOPER S Instruction Manual

9.6V FULL FUNCTION RADIO CONTROL

PLEASE ENSURE TO REMOVE ALL ACCESSORIES AND COMPONENTS FROM THE PACKAGING
The BMW logo, the BMW wordmark and the BMW model designations are trademarks of BMW Group and are used under license.

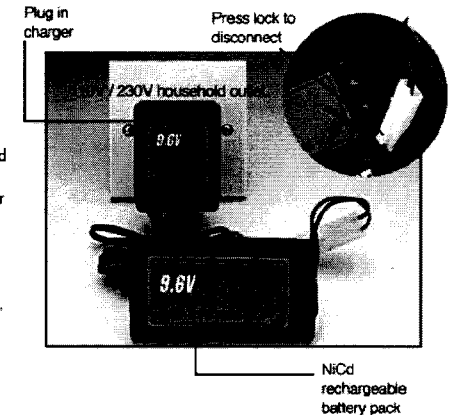
#9366

Charging Battery

Insert charger plug into suitable household outlet.
Connect battery pack to charger clip

Charging time - First charge 7 hours (not more than 8 hours)
- Recharge 4 hours.

REMARKS - New battery packs need charging and a pack will be fully charged after 7 hours. Extended charging does not improve or increase running time. 4 hours is required for recharging the battery. After charging, please disconnect battery pack and unplug charger. Battery pack can be charged up to 1001 times. Running time is between 20- 30 minutes, but can vary from 10- 20 minutes, depending on the size, weight, speed of the vehicle and terrain. The vehicle will quit suddenly when power is completely utilised. Wait a few minutes for pack to cool. Remove from vehicle and then re-charge.

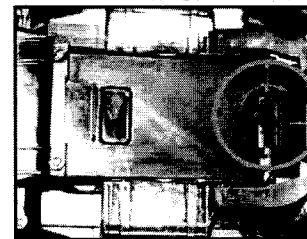


CAUTION

- Leakage may occur if battery not used for lengthy period of time.
- Be careful when disconnecting unit. Do not pull on wires.
- Too much force when disconnecting wire may cause short circuit.
- It is suggested you wait for 20 - 25 minutes before recharging a battery pack. This will give battery pack time to cool off.
- Recharging a warm battery pack will shorten its life.
- Keep away from fire or high temperature.
- Do not charge leaking or damaged batteries.
- Unplug battery pack when not in use.
- Do not dispose battery pack on fire as this may cause an explosion and serious injury.
- Dispose NiCd batteries properly. Do not disassemble.
- You must always remove battery pack from the vehicle prior to charging.
- The battery charger is not for any other use except as instructed.
- It is suggested that parents periodically check wires and plugs.

Power Pack Installation

- Open by turning lock and lifting cover off.
- Join the pack connector plug into compartment plug receptacle and secure tightly.
- Drop pack into position, close and lock cover.
When disconnecting pack DO NOT PULL ON WIRES.



A.
B.
C.

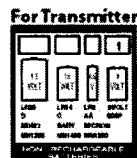


Warning:
Changes or modifications to this unit not expressly approved by the party responsible for compliance could void the user's authority to operate the equipment

NOTE: This equipment has been tested and found to comply with the limits for a Class B digital device, pursuant to Part 15 of FCC Rules and R&TTE Directive 1999/5/EC. These limits are designed to provide reasonable protection against harmful interference in a residential installation. This equipment generates, uses and can radiate radio frequency energy and, if not installed and used in accordance with the instructions, may cause harmful interference the radio communications. However, there is no guarantee that interference will not occur in a particular installation. If this equipment does cause harmful interference to radio or television reception, which can be determined by turning the equipment off and on, the user is encouraged to try to correct the interference by one or more of the following measures:

- Reorient or relocate the receiving antenna.
- Increase the separation between the equipment and receiver.
- Connect the equipment into an outlet on a circuit different from that to which the receiver is needed.
- Consult the dealer or an experienced radio/TV technician for help.

THIS PRODUCT IS FOR THE USE IN U.K., SPAIN, GERMANY, FRANCE, PORTUGAL, BELGIUM, ITALY, SWITZERLAND, THE NETHERLANDS, DENMARK, U.S. AND CANADA.



NO.9366
©ZAP TOYS 2003
MADE IN CHINA

