



R/C 1:16 7+



Instruction Manual

6.0V FULL FUNCTION RADIO CONTROL

PLEASE ENSURE TO REMOVE ALL ACCESSORIES AND COMPONENTS FROM THE PACKAGING

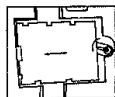
#9374: TOYOTA - SUPRA #9375: MITSUBISHI - LANCER EVOLUTION VII

MITSUBISHI AND LANCER EVOLUTION VII ARE TRADEMARKS OF MITSUBISHI MOTORS CORPORATION, AND USED WITH PERMISSION. TOYOTA AND SUPRA ARE TRADEMARKS OF TOYOTA MOTOR CORPORATION, AND USED WITH PERMISSION.

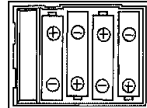
BATTERY REQUIREMENT: Vehicle : 4 x 1.5V (AA) size batteries
Transmitter : 1 x 9V (006P, 6F22) size Batteries

BATTERY INSTALLATION

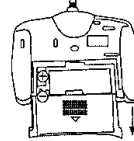
LOCK BATTERY COMPARTMENT:
DROP THE BATTERY COMPARTMENT INTO POSITION, LOCK IT, YOU ARE SET TO RUN!



4X1.5V "AA" battery for vehicle



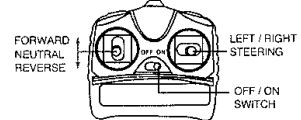
Insert one '9V' battery matching + and - signs.



Recommend to use alkaline batteries for best performance.

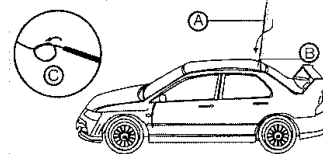
OPERATION

Turn switch to on position for power.
Switch off vehicle and transmitter after use.



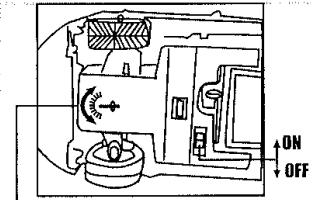
INSTALLATION OF VEHICLE ANTENNA

A. Insert antenna wire through hollow tube.
B. Insert tube into hole of vehicle. AVOID PULLING WIRE TOO TIGHT.
C. Tie a knot on top of wire to secure.



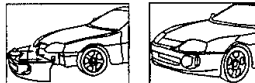
TRIM SWITCH CONTROL

The switch is located on the underside of the vehicle, between the two front wheels and is used to align the wheels for constant straight line driving.



EASY INTERCHANGEABLE PARTS:

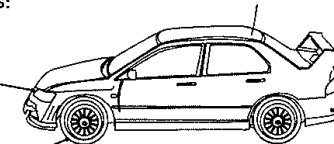
1. FRONT BUMPER



4. QUICK SNAP ON WHEELS



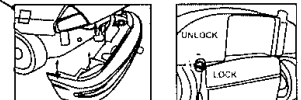
To remove and change the rear bumper, first UNLOCK the bumper as shown in picture. Remember to re lock the new bumper into place. By changing the front rear bumper a hidden switch is activated which will make the car travel faster. When changing the bumper, please take extra care and ensure that you line up the bumper correctly. Quick.



2. REAR SPOILER



3. THIS CAR HAS 2 SPEED. BY CHANGING THE TUNER REAR BUMPER FOR FASTER SPEED



To remove wheels, simply apply a little pressure to the locking clip in the center of the wheel, and then pull the wheel CAREFULLY off the car.

NOTE:

Non-rechargeable batteries are not to be recharged.
Rechargeable batteries are not recommended to be used with this product.
Different types of batteries or new and used batteries are not to be mixed.
Only batteries of the same or equivalent type as recommended are to be used.
Batteries are to be inserted with the correct polarity.
Exhausted batteries are to be removed from the toy.
The supply terminals are not to be short-circuited.

TROUBLE SHOOTING:

PROBLEM: VEHICLE DOES NOT MOVE

- Are the + and - contacts correctly matched in transmitter and car?
- Are the metal contact tabs touching, rusty or dirty in transmitter?
- Are these batteries in vehicle and transmitter?
- Is the power switch on vehicle and transmitter turned on?
- Is the battery / power pack weak or out of power?

PROBLEM: VEHICLE RUNS SLOWLY

- Are the batteries in the vehicle and transmitter worn out?
- Is there something obstructing the movement of the vehicle?
- Is there another R/C equipment with the same frequency close by?

HINTS FOR MAINTENANCE

Radio wave interference may affect behaviour of the vehicle.
Special care for your vehicle is mentioned below.

DO NOT ABUSE YOUR VEHICLE.

- Avoid high water, sand and high impact collisions. Off road vehicles run easily on grassy surfaces.
- Avoid using vehicle on wet surfaces or in rain.
- Avoid using vehicle on sandy or dusty areas.
- Avoid using vehicle for long periods under direct sunlight.
- Sunlight or excessive heat may damage sensitive / electronic instruments.
- Store vehicle / transmitter in dry cool places away from heaters or warm areas.
- Collision with hard surface may damage vehicle.
- Vehicle will not perform on thick carpet or dusty floors.
- Avoid running two vehicles of the same frequency (Purchase two vehicles with different frequencies instead).
- Always brush your vehicle after use to remove dust. Keep vehicle clean.
- Always wipe vehicle with soft rag or cloth. Avoid cleaning vehicle with water or any chemicals.

BATTERY LIFE

Extend battery life by switching off when not in use.

INTERFERENCE

Advisable not to use vehicle close to high tension wires or CB radios.

WARNING:

Changes or modifications to this unit not expressly approved by the party responsible for compliance could void the user's authority to operate the equipment

NOTE: This equipment has been tested and found to comply with the limits for a Class B digital device, pursuant to Part 15 of FCC Rules and R&TTE Directive 1999/5/EC. These limits are designed to provide reasonable protection against harmful interference in a residential installation. This equipment generates, uses and can radiate radio frequency energy and, if not installed and used in accordance with the instructions, may cause harmful interference to radio communications. However, there is no guarantee that interference will not occur in a particular installation. If this equipment does cause harmful interference to radio or television reception, which can be determined by turning the equipment off and on, the user is encouraged to try to correct the interference by one or more of the following measures:

- Reorient or relocate the receiving antenna.
- Increase the separation between the equipment and receiver.
- Connect the equipment into an outlet on a circuit different from that to which the receiver is needed.
- Consult the dealer or an experienced radio/TV technician for help.

THIS PRODUCT IS FOR THE USE IN U.K., SPAIN, GERMANY, FRANCE, BELGIUM, ITALY, SWITZERLAND, THE NETHERLANDS, DENMARK, U.S., CANADA AND PORTUGAL.

CE 0197

printed in China

Another Quality Product From



English
NO.9374/9375
©ZAP TOYS 2003
MADE IN CHINA