



RA3051 WWAN RADIO KIT WITH ANTENNAS (WAN/GPS/WI-FI DIVERSITY) INSTALLATION SHEET



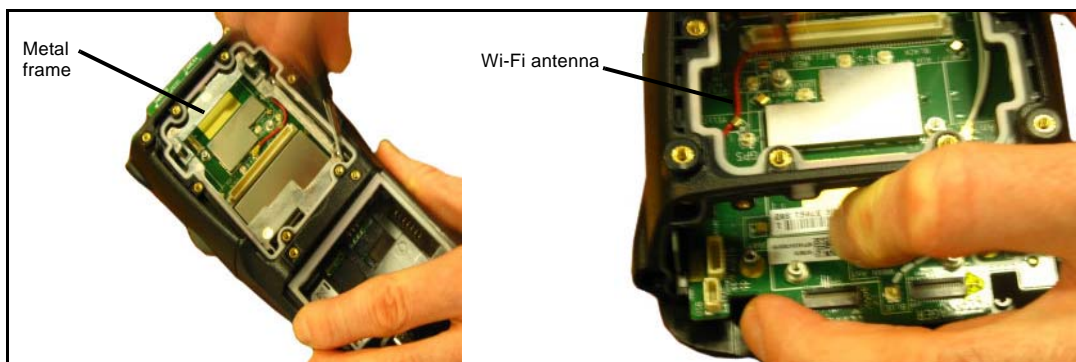
Warning: Installation of any components must be performed using appropriate anti-static devices. If unavailable, discharge body static by touching a grounded metallic object before opening any covers on the hand-held.

Note: If the unit does **not** have an imager or scanner end-cap attached, the WA6212 long blank end-cap is required. The WA6212 end-cap is not included in the RA3051 kit. It must be ordered separately.

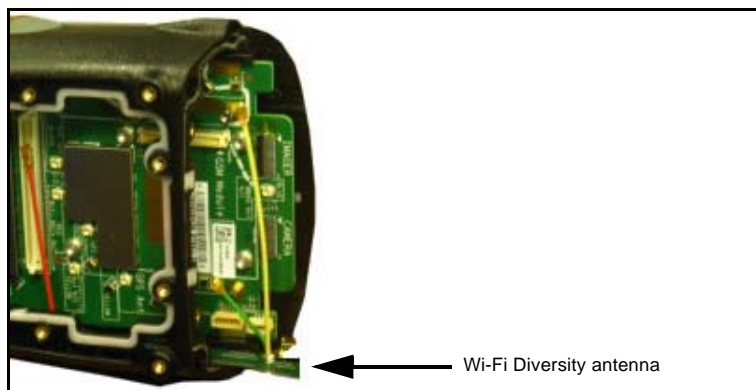
The RA3051 radio kit includes the UMTS PHS8-P Expansion Module along with the following:

- M2x4 Torx T6 screws (x4)
- GPS jumper cable
- WAN main antenna
- WAN diversity antenna

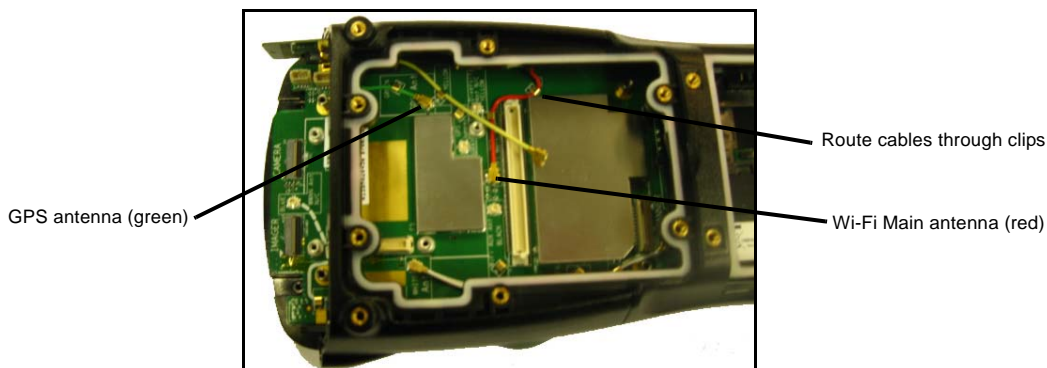
1. Remove the end-cap (x4 screws) and back cover (x6 screws).
2. Remove the metal frame (x4 screws), and remove the existing Wi-Fi antenna.



3. Slide the Diversity Antenna into the grooves along the right side of the unit.

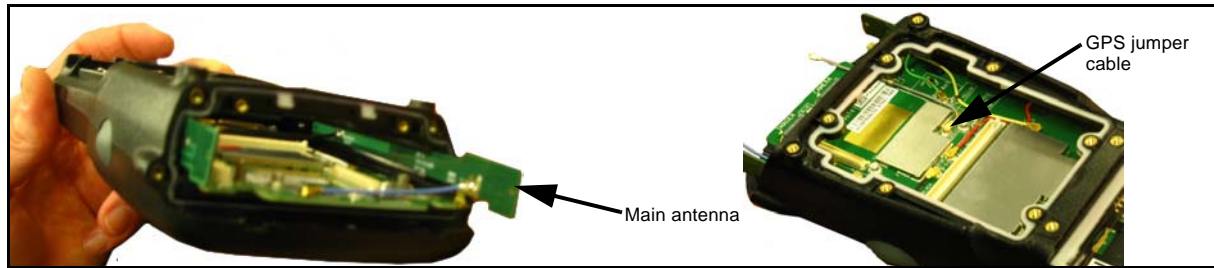


4. Route the cables as indicated on the board – insert the red Wi-Fi antenna into the socket labelled *Red* and the green GPS antenna into the socket labelled *Green*. Secure the cables by routing them through the clips.

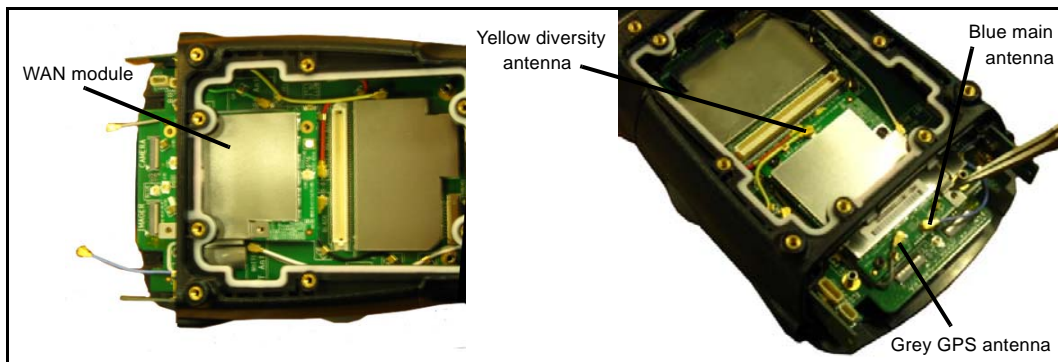




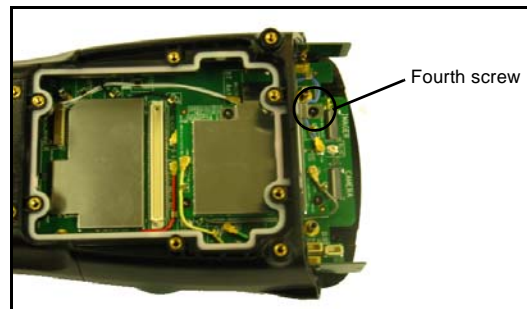
- Slide the Main antenna into the grooves on the left side of the unit until it is anchored in place. Insert the black antenna to the socket labelled *Black*. Route it through the clips to secure it in place. Next, connect the grey GPS jumper cable as shown.



6. Snap the WAN module onto the hand-held board, making sure to align the module pins with those on the board. Insert 3 screws torqued to 2.5 in. lbs. Next, insert the yellow Diversity antenna into the socket labelled *Yellow*. Connect the grey GPS cable, tucking it under the corner of board as shown. Insert the blue Main antenna into the socket labelled *Blue*. Tuck the blue Main antenna under the WAN module shield. The cable should follow the silk screen routing.



7. Add the fourth screw to secure the WAN module in place.



8. Replace the metal frame, sliding it in from the top. Take care not to damage the cables that have been connected. Insert the four screws to a torque of 2.5 in. lbs.
9. Install the back cover (x6 screws) and the end-cap (x4 screws). Each is torqued to 2.5 in. lbs.