

# SYMBOL DS9808 RFID

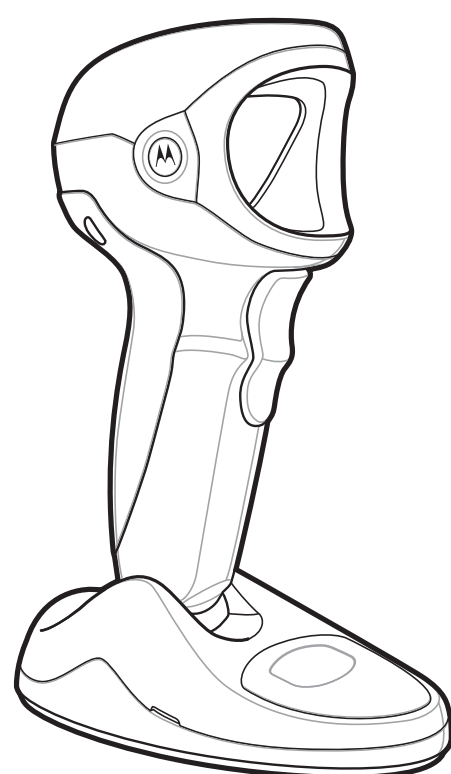
## Quick Start Guide

<http://www.motorola.com/ds9808>

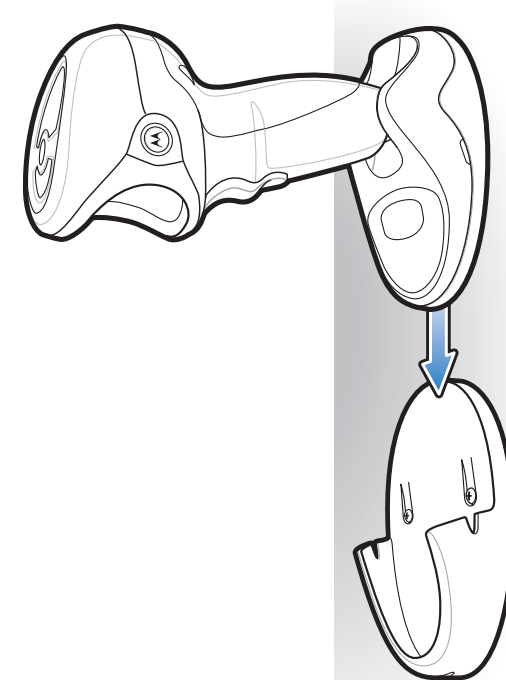
See Product Reference Guide for more information

### ACCESSORIES

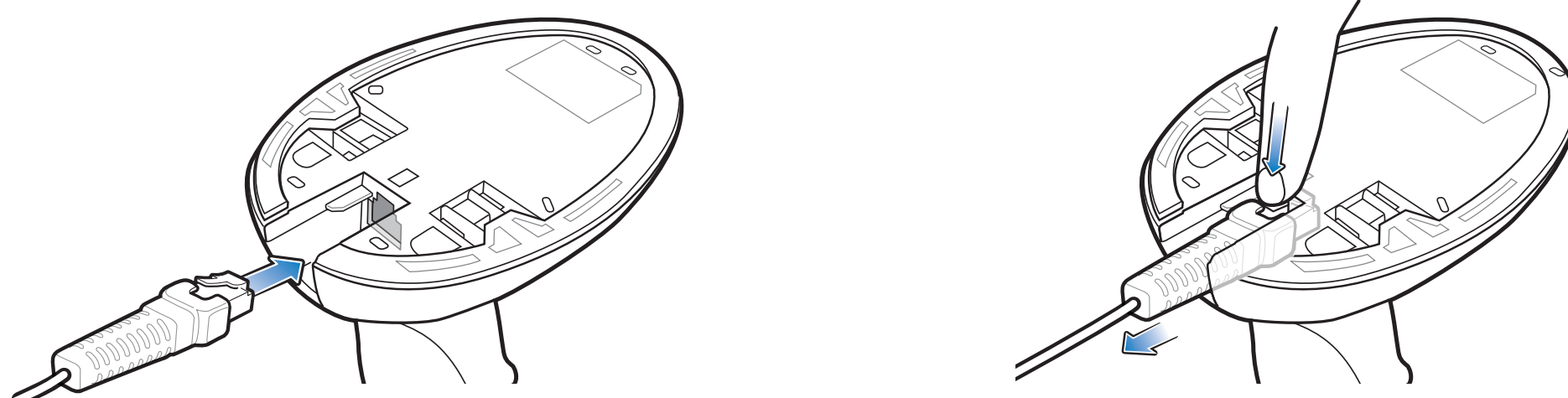
POST IN WORK AREA



#### Wall Mount



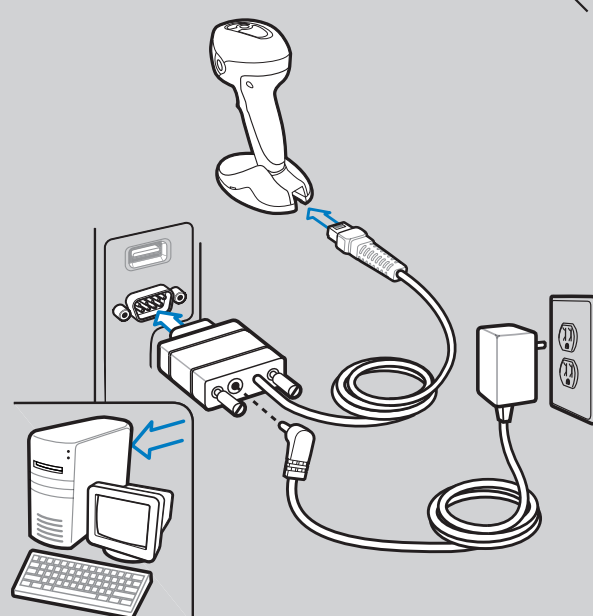
### CORD ATTACHMENT/REMOVAL



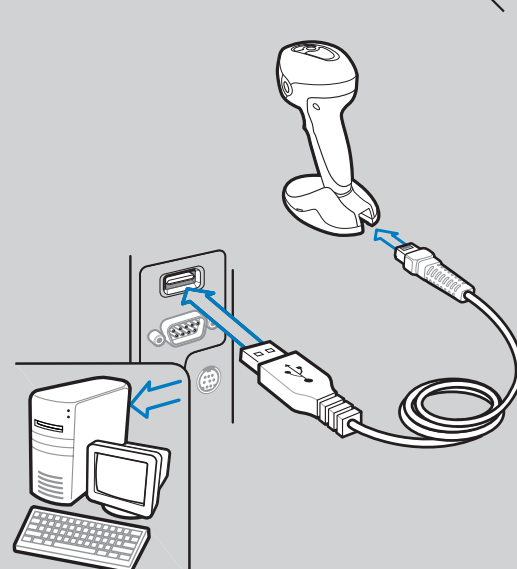
### HOST INTERFACES

NOTE: Cables may vary depending on configuration

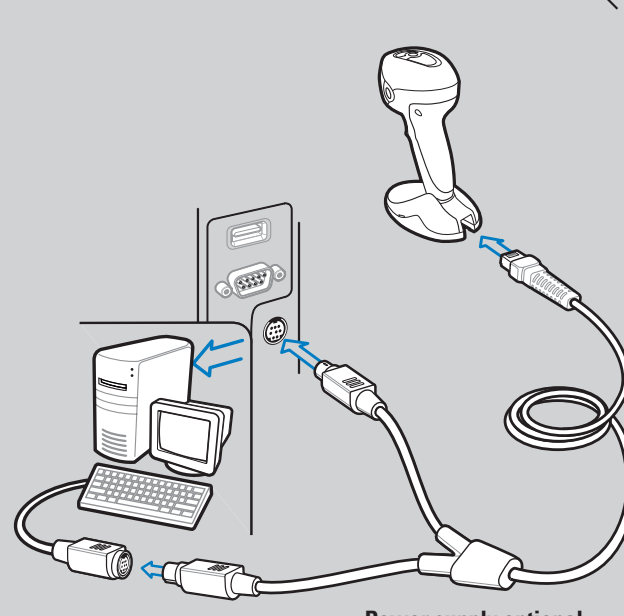
#### RS-232



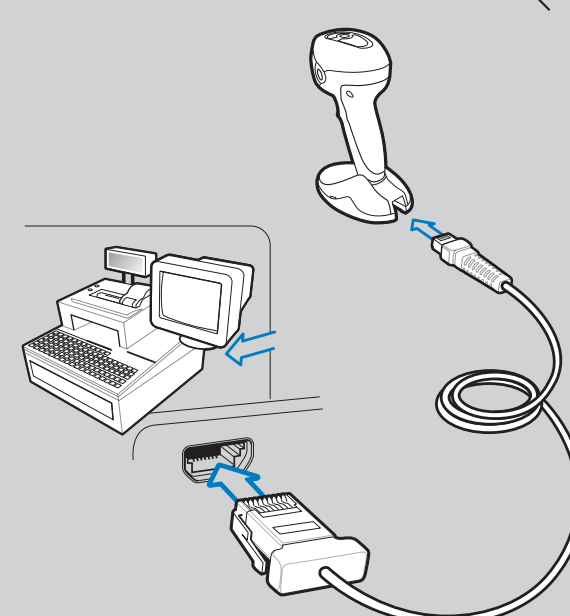
#### USB



#### Keyboard Wedge



#### IBM 46XX



Power supply optional

### TROUBLESHOOTING

#### Scanner not working

##### No power to scanner

Check system power; ensure power supply, if required, is connected

##### Incorrect interface cable used

Ensure that correct interface cable is used

##### Interface/power cables are loose

Ensure all cable connections are secure

#### Scanner not decoding bar code

##### Scanner not programmed for bar code type

Ensure scanner is programmed to read type of bar code being scanned

##### Bar code unreadable

Ensure bar code is not defaced; try scanning test bar code of same bar code type

##### Distance between scanner and bar code incorrect

Move scanner closer to or further from bar code

#### Scanner decoding bar code, but data not transmitting to host

##### Scanner not programmed for correct host interface

Scan appropriate host parameter bar codes

##### Interface cable is loose

Ensure all cable connections are secure

#### Scanned data incorrectly displayed on host

##### Scanner not programmed for correct host interface

Scan appropriate host parameter bar codes

### SYMBOL DS9808 PROGRAMMING BAR CODES

#### Set Defaults



SET DEFAULTS

#### Carriage Return/Line Feed



<DATA><SUFFIX 1>

#### IBM 46XX Host Types



PORT 5B



PORT 9B

#### USB Host Types



HID KEYBOARD EMULATION



SNAPI WITH IMAGING

#### Keyboard Wedge Host Types



IBM PC/AT and IBM PC COMPATIBLE



PORT 17



IBM HAND-HELD USB



SNAPI WITHOUT IMAGING

#### Scan **ONE** of the following country types



NORTH AMERICAN



ITALIAN

#### RS-232 Host Types



STANDARD RS-232



NIXDORF RS-232 MODE B



FRENCH



SWEDISH



ICL RS-232



FUJITSU RS-232



FRENCH CANADIAN



UK ENGLISH



NIXDORF RS-232 MODE A



OPOS/JPOS



GERMAN



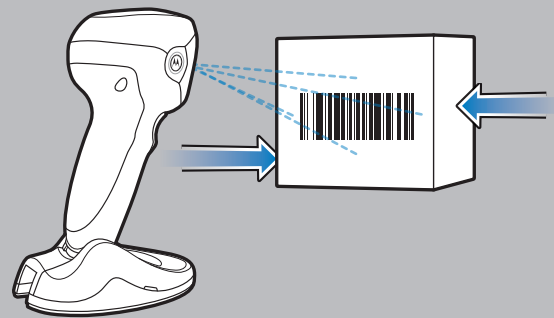
JAPANESE



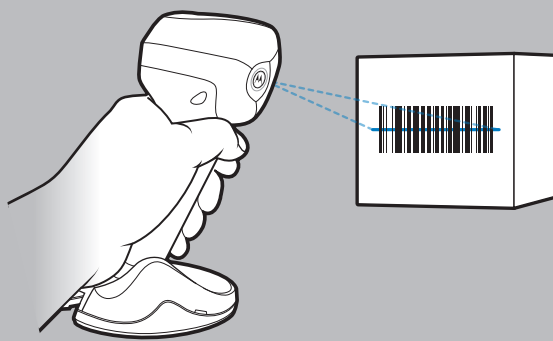
SPANISH

## Hands-Free Scanning

DS9808-LR



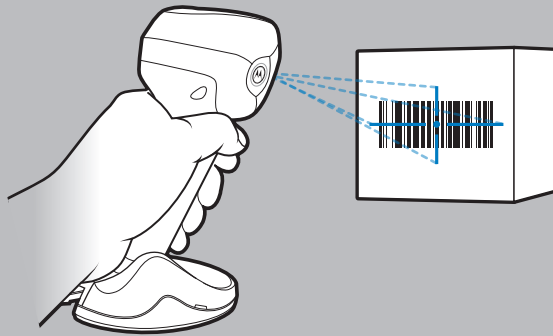
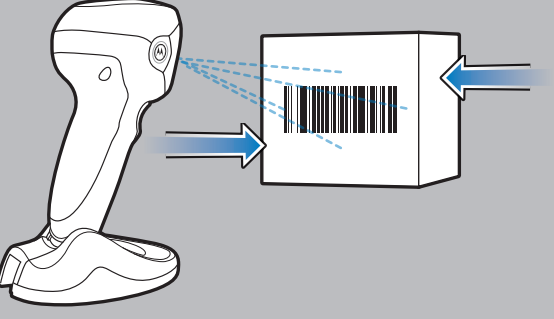
## Hand-Held Scanning



DS9808-LR



DS9808-SR



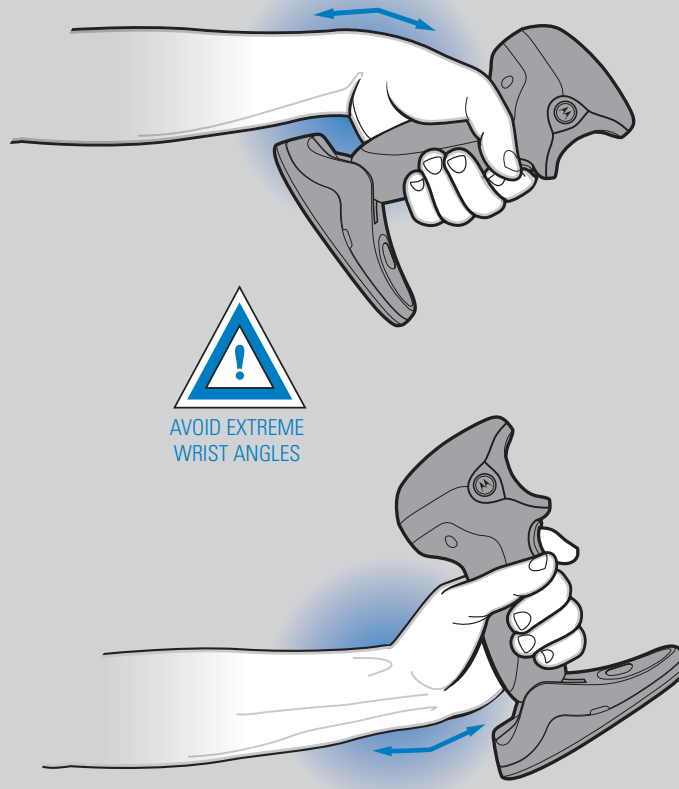
DS9808-SR



## OPTIMUM ARM POSITION

## AVOID EXTREME WRIST ANGLES

## AVOID BENDING AND REACHING



## BEEPER INDICATIONS

## LED INDICATIONS

### Standard Use

<b>Low/medium/high beep</b>	<b>Short medium beep</b>	<b>4 long low beeps</b>
Power up	Bar code decoded	Transmission error detected; data is ignored

### Parameter Menu Scanning

<b>High/low/high/low beep</b>	<b>High/low beep</b>	<b>Low/high beep</b>
Successful parameter setting	Correct programming sequence performed	Incorrect programming sequence or "Cancel" bar code scanned

### Hand-Held Scanning

<b>Off</b>	<b>Green</b>	<b>Red</b>
Scanner is on and ready to scan, or no power to scanner	Bar code is successfully decoded	Transmission error

### Hands-Free (Presentation) Scanning

<b>Off</b>	<b>Green</b>	<b>Off Momentarily</b>	<b>Red</b>
No power to scanner	Scanner is ready to scan	Bar code is successfully decoded	Transmission Error

Local Contact: \_\_\_\_\_

## REGULATORY INFORMATION

**© MOTOROLA, INC. 2009** All rights reserved. Motorola reserves the right to make changes to any product to improve reliability, function, or design. Motorola does not assume any product liability arising out of, or in connection with, the application or use of any product, circuit, or application described herein. No license is granted, either expressly or by implication, estoppel, or otherwise under any patent right or patent, covering or relating to any combination, system, apparatus, machine, material, method, or process in which Motorola products might be used. An implied license exists only for equipment, circuits, and subsystems contained in Motorola products. MOTOROLA, the Stylized M Logo and Symbol and the Symbol logo are registered trademarks of Motorola, Inc. Other product names mentioned in this manual may be trademarks or registered trademarks of their respective companies and are hereby acknowledged.

**Warranty**  
For the complete Motorola hardware product warranty statement, go to: <http://www.motorola.com/enterprisemobility/warranty>

**Patents**  
This product is covered by one or more patents. For patent information go to: <http://www.motorola.com/enterprisemobility/patents>

**Service Information**  
If you have a problem using the equipment, contact your facility's Technical or Systems Support. If there is a problem with the equipment, they will contact the Motorola Enterprise Mobility Support at: <http://www.motorola.com/enterprisemobility/contactsupport>  
For the latest version of this guide go to: <http://www.motorola.com/enterprisemobility/manuals>

### Waste Electrical and Electronic Equipment (WEEE)

**English:** For EU Customers: All products at the end of their life must be returned to Motorola for recycling. For information on how to return product, please go to: <http://www.motorola.com/recycling/weee>

**Deutsch:** Für Kunden innerhalb der EU: Alle Produkte müssen am Ende ihrer Lebensdauer zum Recycling an Motorola zurückgeschickt werden. Informationen zur Rücksendung von Produkten finden Sie unter <http://www.motorola.com/recycling/weee>.

**Ελληνικά:** Για πελάτες στην Ε.Ε.: Όλα τα προϊόντα, στο τέλος της ζωής τους, πρέπει να επιστρέφονται στην Motorola για ανακύκλωση. Για περισσότερες πληροφορίες σχετικά με την επιστροφή ενός προϊόντος, επισκεφθείτε τη διεύθυνση <http://www.motorola.com/recycling/weee>.

**Eesti:** EL klientidele: kõik tooted tuleb nende eluaja lõppedes tagastada taaskasutamise eesmärgil Motorola'le. Lisainformatsiooni saamiseks loote tagastamise kohta külastage pakka aadressil: <http://www.motorola.com/recycling/weee>

**Español:** Para clientes en la Unión Europea: todos los productos deberán entregarse a Motorola al final de su ciclo de vida para que sean reciclados. Si desea más información sobre cómo devolver un producto, visite: <http://www.motorola.com/recycling/weee>.

**Français:** Clients de l'Union Européenne: Tous les produits en fin de cycle de vie doivent être retournés à Motorola pour recyclage. Pour de plus amples informations sur le retour de produits, consultez: <http://www.motorola.com/recycling/weee>.

**Italiano:** per i clienti dell'UE: tutti i prodotti che sono giunti al termine del rispettivo ciclo di vita devono essere restituiti a Motorola al fine di consentire il riciclaggio. Per informazioni sulle modalità di restituzione, visitate il seguente sito Web: <http://www.motorola.com/recycling/weee>.

**Latvian:** ES klientiem: vis produkti pēc tā kalpošanas mūža beigām ir jānodod atpakaļ Motorola otrreizējai pārstrādei. Lai iegūtu informāciju par produktu nogādāšanu Motorola, lūdz skatīt: <http://www.motorola.com/recycling/weee>.

**Lithuanian:** ES vartotojams: visi gaminiai, pasibaigus jų eksploatavimo laikui, turi būti grąžinti užtiktoji į kompaniją Motorola. Daugiau informacijos, kaip grąžinti gaminį, rasite: <http://www.motorola.com/recycling/weee>.

**Magyar:** Az EU-ban vásárlókak: Minden beszerzett termékét a Motorola vállalatához kell eljuttatni újrahasznosítás céljából. A termék visszájuttatásának módjával kapcsolatos tudnivalókat látogasson el a <http://www.motorola.com/recycling/weee> weboldalra.

**Nederlands:** Voor klanten in de EU: alle producten dienen aan het einde van hun levensduur naar Motorola te worden teruggezonden voor recycling. Raadpleeg <http://www.motorola.com/recycling/weee> voor meer informatie over het terugzenden van producten.

**Polski:** Klienci z obszaru Unii Europejskiej: Produkty wycofane z eksploatacji należy zwrócić do firmy Motorola w celu ich recyklingu. Informacje na temat zwrótu produktów znajdują się na stronie internetowej: <http://www.motorola.com/recycling/weee>.

**Portuguese:** Para clientes da UE: todos os produtos no fim de vida devem ser devolvidos à Motorola para reciclagem. Para obter informações sobre como devolver o produto, visite: <http://www.motorola.com/recycling/weee>.

**Slovenian:** Pre zbirateljev iz EU: Vse proizvode, ki so pri koncu svojega življenjskega cikla, vrnite v podjetje Motorola za recikliranje. Za informacije o vračilu izdelka obiščite: <http://www.motorola.com/recycling/weee>.

**Slovak:** Pre zákazníkov z krajín EÚ: Všetky výrobky musia byť po uplynutí doby ich životnosti vrátené spoločnosti Motorola na recykláciu. Blžšie informácie o vrátení výrobkov nájdete na <http://www.motorola.com/recycling/weee>.

**Slovenski:** Za kupce v EU: vsi izdelki se morajo po poteku življenjske dobe vrniti podjetju Motorola za recikliranje. Za informacije o vračilu izdelka obiščite: <http://www.motorola.com/recycling/weee>.

**Suomi:** Asiakkaiden Euroopan unionin alueella: Kaikki tuotteet on palautettava kierrätettäväksi Motorola-yhtiöön, kun tuotetta ei enää käytetä. Lisätietoja tuotteen palauttamisesta on osoitteessa: <http://www.motorola.com/recycling/weee>.

**Svenska:** För kunder inom EU: Alla produkter som uppnått sin livslängd måste returneras till Motorola för återvinning. Information om hur du returnerar produkten finns på <http://www.motorola.com/recycling/weee>.

### Ergonomic Recommendations

**Caution:** In order to avoid or minimize the potential risk of ergonomic injury follow the recommendations below. Consult with your local Health & Safety Manager to ensure that you are adhering to your company's safety programs to prevent employee injury.

- Reduce or eliminate repetitive motion
- Maintain a natural position
- Reduce or eliminate excessive force
- Keep objects that are used frequently within easy reach
- Perform tasks at correct heights
- Reduce or eliminate vibration
- Reduce or eliminate direct pressure
- Provide adjustable workstations
- Provide adequate clearance
- Provide a suitable working environment
- Improve work procedures.

### Regulatory Information

This guide applies to Model Number DS9808RUS & DS9808RWW. All Motorola devices are designed to be compliant with rules and regulations in locations they are sold and will be labeled as required.

**Any changes or modifications to Motorola equipment, not expressly approved by Motorola, could void the user's authority to operate the equipment.**

**Caution**  
Only use Motorola/ approved and UL Listed accessories, battery packs and battery chargers. Do NOT attempt to charge damp/wet mobile computers or batteries. All components must be dry before connecting to an external power source.

Declared maximum operating temperature: 104° F / 40° C  
This guide is available on local languages, translations are available at the following website: <http://www.motorola.com/enterprisemobility/support>

### Wireless Device Country Approvals

Regulatory markings, subject to certification, are applied to the device signifying the radio(s) is/are approved for use in the following countries: United States, Canada and Mexico.

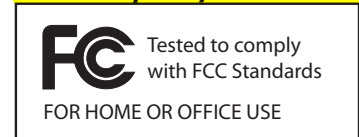
### Country Selection - Worldwide Version Only

Select only the country in which you are using the device. Any other selection will make the operation of this device illegal.

### Frequency of Operation - FCC

The range of channels is limited by firmware.

### Radio Frequency Interference Requirements



**Note:** This equipment has been tested and found to comply with the limits for a Class B digital device, pursuant to Part 15 of the FCC rules. These limits are designed to provide reasonable protection against harmful interference in a residential installation. This equipment generates, uses and can radiate radio frequency energy and, if not installed and used in accordance with the instruction manual, may cause harmful interference to radio communications. However there is no guarantee that interference will not occur in a particular installation. If this equipment does cause harmful interference to radio or television reception, which can be determined by turning the equipment off and on, the user is encouraged to try to correct the interference by one or more of the following measures:

- Reorient or relocate the receiving antenna
- Increase the separation between the equipment and receiver
- Connect the equipment into an outlet on a circuit different from that to which the receiver is connected
- Consult the dealer or an experienced radio/TV technician for help.

### Radio Transmitters (Part 15)

This device complies with Part 15 of the FCC Rules. Operation is subject to the following two conditions: (1) this device may not cause harmful interference, and (2) this device must accept any interference received, including interference that may cause undesired operation.

### Radio Frequency Interference Requirements - Canada

This Class B digital apparatus complies with Canadian ICES-003. Cet appareil numérique de la classe B est conforme à la norme NMB-003 du Canada.

<http://www.motorola.com/ds9808>

### Radio Transmitters

This device complies with RSS 210 of Industry & Science Canada. Operation is subject to the following two conditions: (1) this device may not cause harmful interference and (2) this device must accept any interference received, including interference that may cause undesired operation.

Label Marking: The Term "IC:" before the radio certification only signifies that Industry Canada technical specifications were met.

**Warnings for Use of Wireless Devices**  
Please observe all warning notices with regard to the usage of wireless devices.

### Potentially Hazardous Atmospheres

You are reminded of the need to observe restrictions on the use of radio devices in fuel depots, chemical plants etc. and areas where the air contains chemicals or particles (such as grain, dust, or metal powders).

### Safety in Hospitals

Wireless devices transmit radio frequency energy and may affect medical electrical equipment. Wireless devices should be switched off wherever you are requested to do so in hospitals, clinics or healthcare facilities. These requests are designed to prevent possible interference with sensitive medical equipment.

### Pacemakers

Pacemaker manufacturers recommended that a minimum of 15cm (6 inches) be maintained between a handheld wireless device and a pacemaker to avoid potential interference with the pacemaker. These recommendations are consistent with independent research and recommendations by Wireless Technology Research. Persons with Pacemakers:

- Should ALWAYS keep the device more than 15cm (6 inches) from their pacemaker when turned ON.
- Should not carry the device in a breast pocket.
- Should use the ear furthest from the pacemaker to minimize the potential for interference.
- If you have any reason to suspect that interference is taking place, turn OFF your device.

### Other Medical Devices

Please consult your physician or the manufacturer of the medical device, to determine if your wireless product may interfere with the medical device.

### RF Exposure Guidelines

**Safety Information**  
**Reducing RF Exposure - Use Properly**  
Only operate the device in accordance with the instructions supplied.

### Handheld Devices

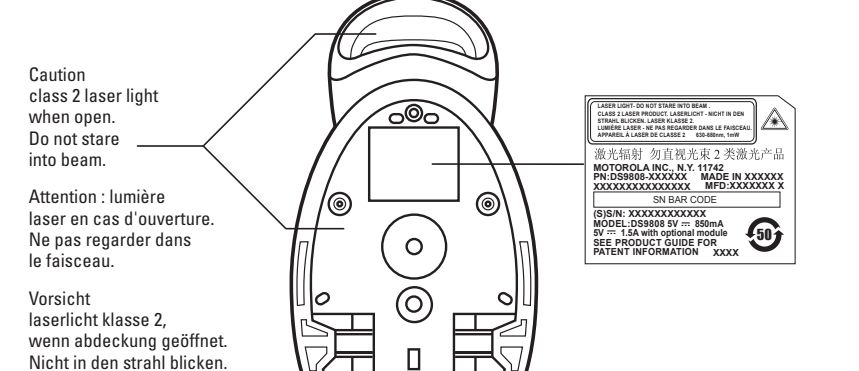
To comply with FCC RF exposure requirements, this device must be operated in the hand with a minimum separation distance of 23cm or more from a person's body. Other operating configurations should be avoided.

### Laser Devices

Complies with 21CFR1040.10 and 1040.11 except for deviations pursuant to Laser Notice No. 50, dated June 24, 2007. EN60825-1: 2007 IEC60825-1 (Ed 2.0)

The laser classification is marked on one of the labels on the device.

Class 2 laser scanners use a low power, visible light diode. As with any very bright light source, such as the sun, the user should avoid staring directly into the light beam. Momentary exposure to a Class 2 laser is not known to be harmful.



### Power Supply

Use only a Motorola approved power supply output rated at XX Vdc and minimum XX A. The power supply shall be Listed to UL/CSA 60950-1 and certified to IEC60950-1 and EN60950-1 with SELV outputs. Use of alternative power supply will invalidate any approval given to this device and may be dangerous.

**MOTOROLA**  
Motorola, Inc.  
One Motorola Plaza Holtsville, New York 11742-1300, USA  
MOTOROLA and the Stylized M Logo and Symbol and the Symbol logo are registered in the U.S. Patent and Trademark Office. All other product or service names are the property of their respective owners.  
© Motorola, Inc. 2008

72-125703-01 Revision A September 2009