

Instruction Manual

Thank you for purchasing the Remote Control Racing Boat. This manual provides more information about this Remote Control Racing Boat, please read the instructions before using.

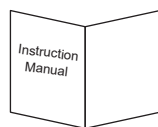


AGES 8+

Product Overview



Remote Control Racing Boat

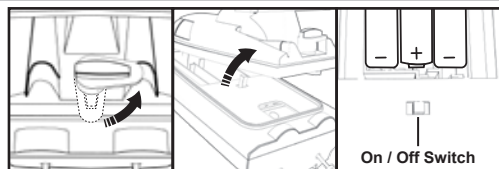


Instruction Manual



Remote Control

Power On/Off



1. Rotate the button to the right and unlock the body.
2. Move upward the body and take it out.

Power On/Off

Slide the ON/OFF Switch to ON to turn on the Remote Control Racing Boat. Slide the ON/OFF Switch to OFF to turn off the Remote Control Racing Boat.

Package Contents

- Remote Control Racing Boat x 1
- Remote Control x 1
- Instruction Manual x 1

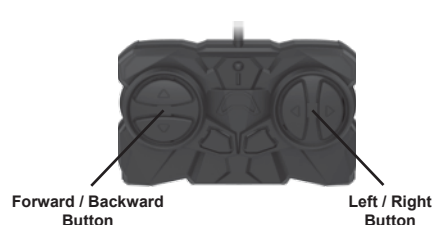
Specifications

Remote Control Racing Boat Power Supply:
3 x "AA" 1.5V Batteries
(Alkaline type preferred, not included)

Remote Control Power Supply:
3 x "AAA" 1.5V Batteries
(Alkaline type preferred, not included)

Frequency: 49.86 MHz

Remote



Forward / Backward Button

Left / Right Button

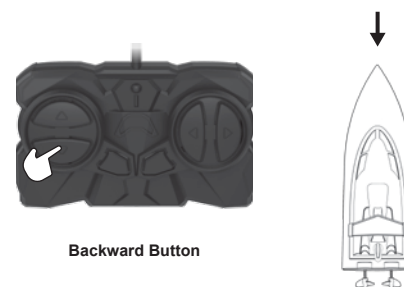
Standard Control

Note: To avoid losing control, always pay attention when controlling the Remote Control Racing Boat.



Forward Button

Control Remote Control Racing Boat to move forward



Backward Button

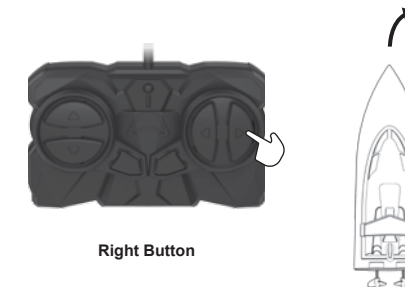
Control Remote Control Racing Boat to move backward

Standard Control



Left Button

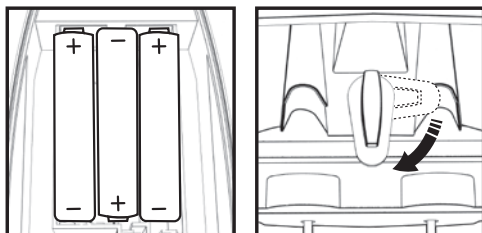
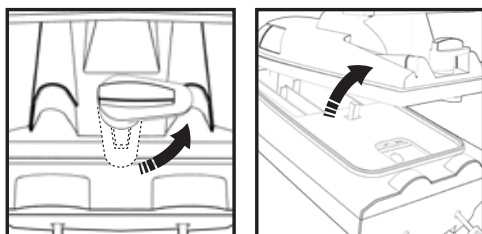
Control Remote Control Racing Boat to turn left



Right Button

Control Remote Control Racing Boat to turn right

Batteries Installation

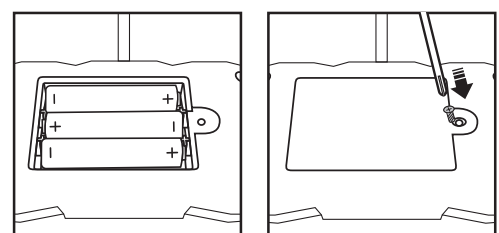
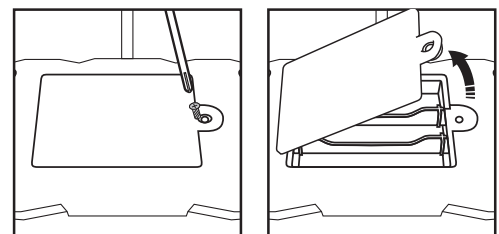


To install batteries into the Remote Control Racing Boat, rotate the button to right to open the boat cover. Insert 3 x "AA" 1.5V batteries (Not Included) into the battery box. Batteries should be placed as shown on the diagram. Replace the boat cover and rotate the button to left and lock the boat.

Notice:

When inserting the batteries, you must insert according to the correct polarity, the Remote Control Racing Boat won't function if batteries are reversed.

Batteries Installation



To install batteries into the Remote Control Racing Boat Remote, unscrew the screw on the battery box cover to open the cover. Insert 3 x "AAA" 1.5V batteries (Not Included) into the battery box. Batteries should be placed as shown on the diagram. Replace the battery box cover and tighten the screw.

Notice:

When inserting the batteries, you must insert according to the correct polarity, the Remote won't function if batteries are reversed.

Performance Tips

1. Do not drive the Remote Control Racing Boat in the sea or lake.
2. Do not drive the Remote Control Racing Boat in windy or rainy weather.
3. Do not drive the Remote Control Racing Boat into any sharp object.
4. Keep fingers, hair and loose clothing away from Remote Control Racing Boat.

Care and Maintenance

Always use dry and soft cloth to clean this product.

Avoid this product from being exposed to sunlight or heat.

Avoid immersing these toys unlock and put into water, otherwise, the electronic parts may be damaged.

Check the product regularly. If any damages are discovered, please stop using immediately, until it is completely repaired in good working condition.

IMPORTANT: BATTERY INFORMATION

CAUTION:

1. TO AVOID BATTERY LEAKAGE
 - a. Always follow the instructions carefully. Use only batteries specified and be sure to insert them correctly by matching the + and - polarity markings.
 - b. Do not mix old batteries and new batteries or standard (carbon-zinc) with alkaline batteries.
 - c. Remove exhausted or dead batteries from the product.
 - d. Remove batteries if product is not to be played with for a long time.
 - e. Do not short-circuit the supply terminals.
2. Should this product cause, or be affected by local electrical interference, move it away from other electrical equipment. Reset (switching ON & OFF again or removing and re-inserting batteries) if necessary.

Warning

This product is suitable to be used by people who has operating experience in remote toy or aged no less than 8 years old.

Please do not immerse the whole RC Racing Boat into the water as this may cause ingress of water and malfunction.

Please do not turn over the RC Racing Boat on water.

Please play the RC Racing Boat only in palm water. This toy is not suitable for playing in sea, river or other area with turbulence flow of water.

Please do not put the product in your mouth to prevent choking hazard of small parts.

Please do not put the finger into available interspaces.

Please do not play the product in a brutal way such as throwing, crashing or twisting it.

Please store the smaller-sized product accessories in places that are out of reach of children, in order to avoid the occurrence of accidents.

Avoid placing the batteries in places in high temperatures and avoid exposure to heat.

When young children are operating the product, it shall be ensured that the adults are guiding and making sure the product control is within the viewing range of the controller (or instructor) so that it makes the control of the toy more convenient.

When the product is not in use, please switch off the power supplies of the toy, and remove the batteries from the product.

Please note that we won't take any responsibility for any wrong operation as this may result in severe injury or loss of property, and we cannot control the operating process during the time when the user assembles or uses this product.

Once this product is sold, we won't be responsible for any safety responsibility during the time the user operates or uses controls this products.

FCC Statement

This device complies with the part 15 of the FCC rules. Operation is subject to the following two conditions: (1) this device may not cause harmful interference, and (2) this device must accept any interference received, including interference that may cause undesired operation. Caution: changes or modifications not expressly approved by the party responsible for compliance could void the user's authority to operate the equipment.

NOTE: This equipment has been tested and found to comply with the limits for a Class B digital device, pursuant to Part 15 of the FCC Rules. These limits are designed to provide reasonable protection against harmful interference in a residential installation. This equipment generates, uses and can radiate radio frequency energy and, if not installed and used in accordance with instructions may cause harmful interference to radio or television reception, which can be determined by turning the equipment off and on. The user is encouraged to try to correct the interference by one or more of the following measures:

- Reorient or relocate the receiving antenna.
- Increase the separation between the equipment and receiver.
- Connect the equipment into an outlet on a circuit different from that to which the receiver is connected.
- Consult the dealer or experienced radio/ TV technician for help.

RF warning statement:

The device has been evaluated to meet general RF exposure requirement. The device can be used in portable exposure condition without restriction.

FCC ID: 2ADM5-ET0096

Keep all relevant information for future reference
Made Exclusively for Five Below
Distributed by Zeeva International Limited
Suite 1006C-8, 10th Floor, Exchange Tower,
33 Wang Chiu Road, Kowloon Bay,
Hong Kong, China

