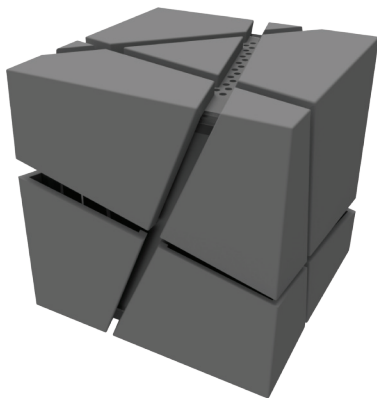
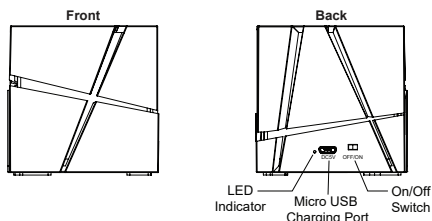


USER MANUAL

Thank you for purchasing the Blast Bluetooth Speaker.
This manual provides more information
about this wireless speaker, please read the instructions before using.



Product Overview



Package Contents

Blast Bluetooth Speaker x 1pc
Micro USB Charging Cable x 1pc
User Manual x 1

Power On/Off

Power on
Slide the ON/OFF Switch to the right.

Power off
Slide the ON/OFF Switch to the left.

Pair Bluetooth speaker with your mobile device

1. Keep the distance between your Bluetooth speaker and mobile phone (or other devices) within 32.8 Feet.
2. Power on the Bluetooth speaker.
3. Activate the Bluetooth function on your phone within range and select "Blast BT Spk" from the list shown.
4. You will hear a beep sound when pairing is successful.

Reconnect Bluetooth speaker to your mobile device

When powered on, the Bluetooth speaker will automatically connect with the last successfully paired device.

Charging your Bluetooth speaker

1. Use the Micro USB cable provided with this Bluetooth speaker.
2. Connect the Micro USB plug to Micro USB charging port on the speaker, then connect the USB plug to a USB port on a computer or wall adapter to begin charging.
3. The light will turn red while charging and will turn off once fully charged.

NOTE:

- You must select a qualified charger from a regular manufacturer.
- You must charge the Bluetooth speaker if it has been not used for more than 12 months.



Technical specification

Driver Diameter: 40mm
Impedance: 4 Ohms
Frequency Response: 20Hz - 20KHz
Battery Capacity: 300 mAh
Battery Type: Li-ion Battery 3.7V
Playing time: 1-2 hours
Bluetooth Range: 32.8 Feet
Bluetooth Version: 3.0

FAQ

- ◆ **If the Bluetooth speaker cannot be paired with your device, please try the following:**
Ensure that your speaker is in pairing mode or reconnection mode.
Ensure that Bluetooth search function of your mobile device is activated.
- ◆ **If the Bluetooth speaker cannot be recharged:**
If you use a power outlet, ensure that the power supply is connected securely and the outlet works. If you use a computer, ensure that it is connected and the USB port is powered.

FCC STATEMENT

1. This device complies with Part 15 of the FCC Rules. Operation is subject to the following two conditions:

- (1) This device may not cause harmful interference.
 - (2) This device must accept any interference received, including interference that may cause undesired operation.
2. Changes or modifications not expressly approved by the party responsible for compliance could void the user's authority to operate the equipment.

NOTE: This equipment has been tested and found to comply with the limits for a Class B digital device, pursuant to Part 15 of the FCC Rules. These limits are designed to provide reasonable protection against harmful interference in a residential installation. This equipment generates uses and can radiate radio frequency energy and, if not installed and used in accordance with the instructions, may cause harmful interference to radio communications. However, there is no guarantee that interference will not occur in a particular installation. If this equipment does cause harmful interference to radio or television reception, which can be determined by turning the equipment off and on, the user is encouraged to try to correct the interference by one or more of the following measures:

- Reorient or relocate the receiving antenna.
- Increase the separation between the equipment and receiver.
- Connect the equipment into an outlet on a circuit different from that to which the receiver is connected.
- Consult the dealer or an experienced radio/TV technician for help.

RF warning statement:

The device has been evaluated to meet general RF exposure requirement. The device can be used in portable exposure condition without restriction.

FCC ID: 2ADM5-SP-0012