

14+

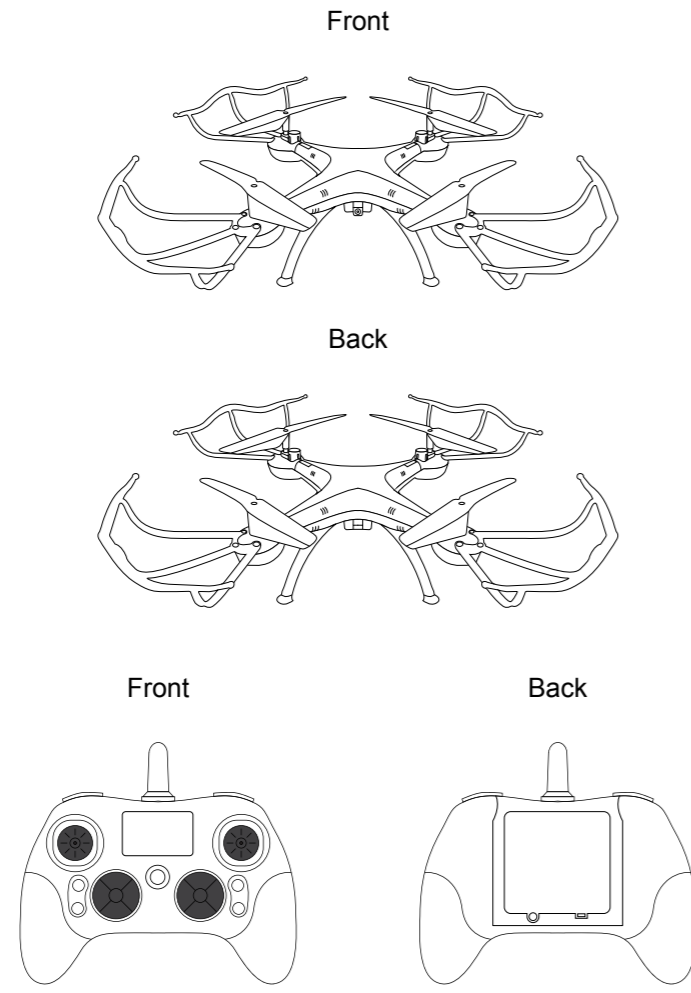
EXPLORER DRONE

Instruction Manual

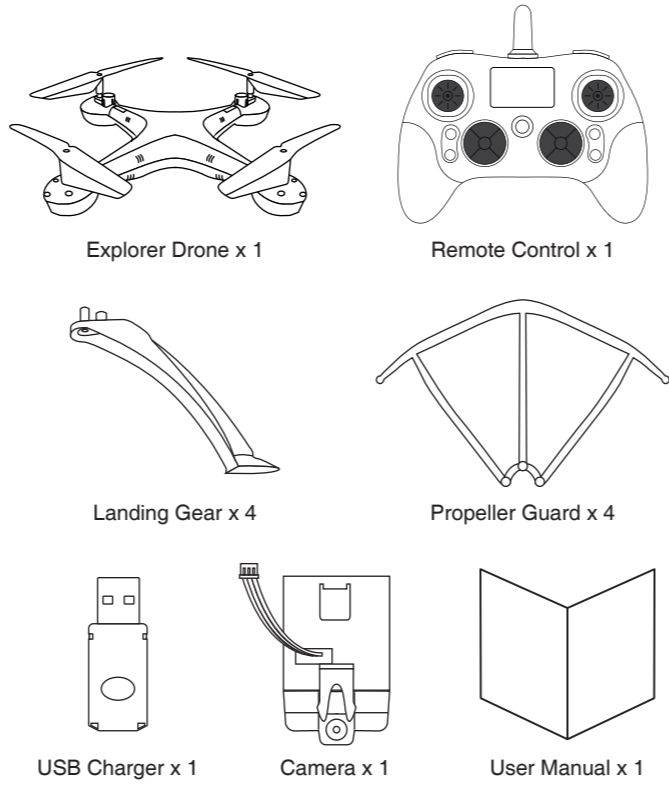
Thank you for purchasing the explorer drone. This manual provides more information about this drone, please read the instructions before using.



Product Overview



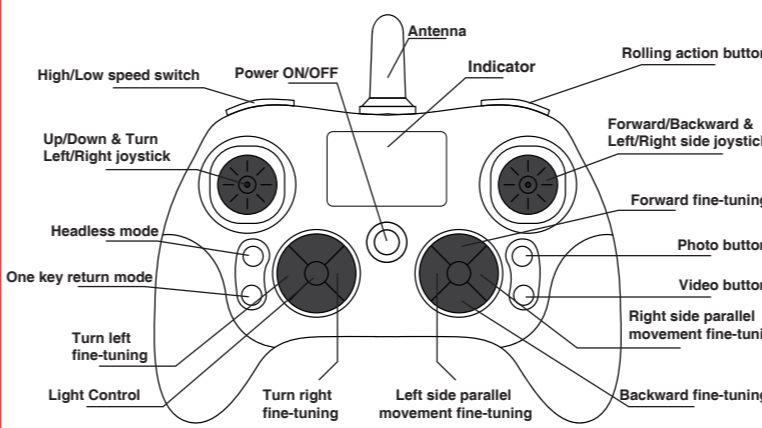
Package Contents



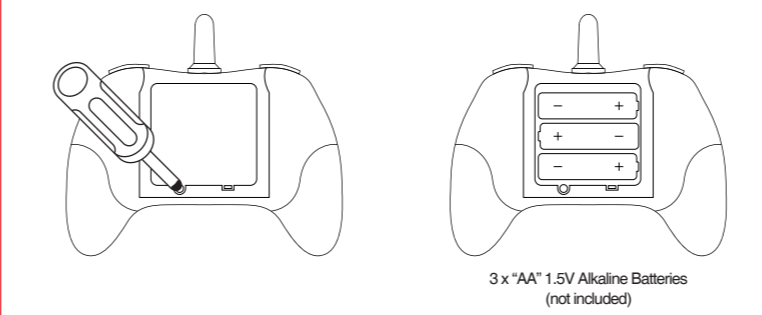
Specification

Remote control power supply: 3 x "AA" 1.5V Alkaline Batteries (Not Included)
Drone power supply: Rechargeable Li-ion Battery 3.7V
Charging time: 1-2 hours
Play time: 6-7 minutes
Radio control type: RC model
Control distance: 70 Meters

Remote Control



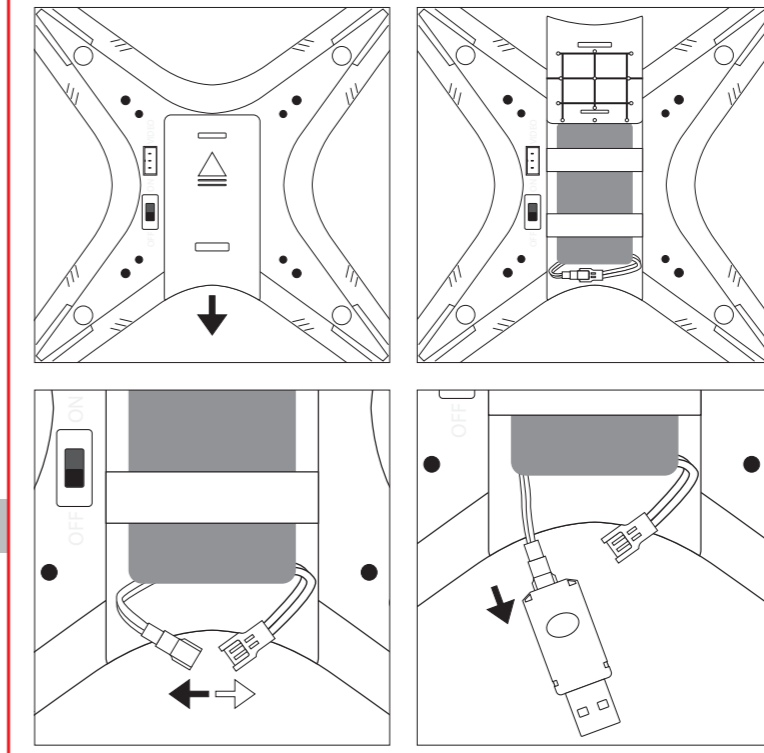
Remote Control Batteries Installation



To install batteries into the controller, unscrew the screw on the battery box cover, to open the cover. Insert 3 x "AA" batteries 1.5V Alkaline Batteries (not included) into the battery box. Batteries should be placed as show on the diagram.

Notice: When inserting the batteries, you must insert according to the correct polarity, the remote wont function if batteries are reversed.

Drone Battery Charging



To recharge the battery of the drone, open battery box cover. Disconnect the rechargeable li-ion battery from the drone. Connect and plug into the socket of USB charger for battery charging. Should be placed as show on the diagram. In the process of the battery charging, the indicator shows red light; after full charging, the indicator light will turn off.

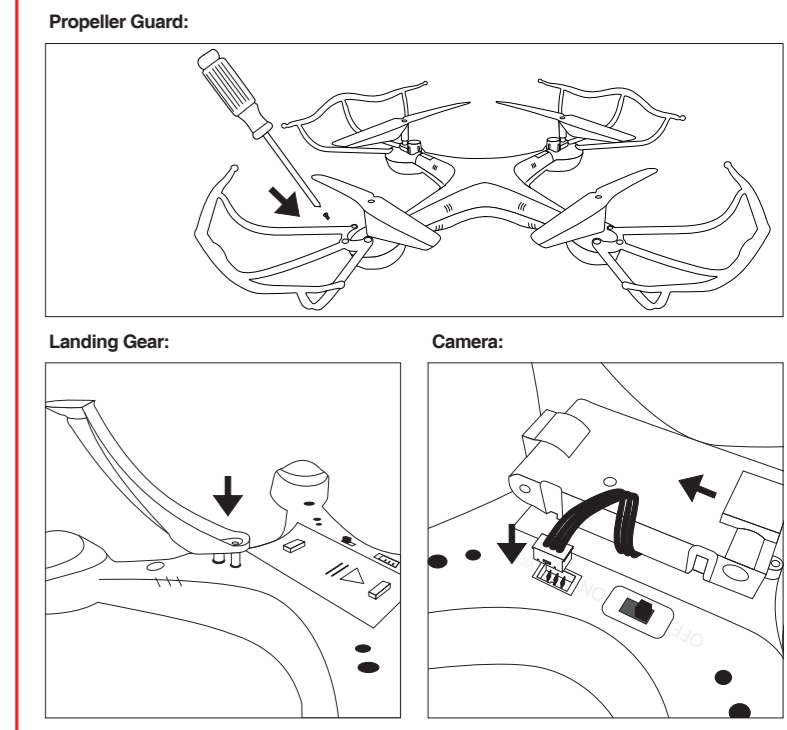
Drone Accessories Assembly

Propeller Guard: Insert four propeller guard into the holes of the propeller guard, and use the screwdriver to lock four screws lightly.

Landing Gear: Insert the four landing gear into the landing gear holes at the bottom of the drone.

Camera: Insert camera stuck on fuselage buckle at the bottom of the drone. And plug the wire to the video section.

Drone Accessories Assembly



Camera Photo / Video Instructions

Turn the drone power on, the camera ready when the RED indicator change from flashing to BLUE and keep light on. If the RED indicator light on and light off for after few seconds, it means the SD card is not in the camera. Please insert the SD card, than the indicator light will turn off.

Photo: Press the photo button from remote control, will issue a "DI" sound. The indicator light of camera will flash one time, and take a photo.

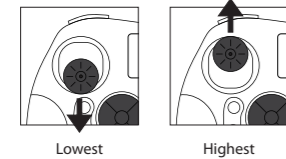
Video: Press the video button from remote control and hold for several seconds, will issue continue "DI DI DI" sound. The indicator light of the camera will be flashing, it will start recording video, press the button again, the RED light turn BLUE, and the camera will stop recording.

Start off

Power (Failure) program
The drone equipped four receivers for fault protection. When the drone is not received the remote control signal, battery power failures or other failures, to ensure the motor does not start to achieve protection.

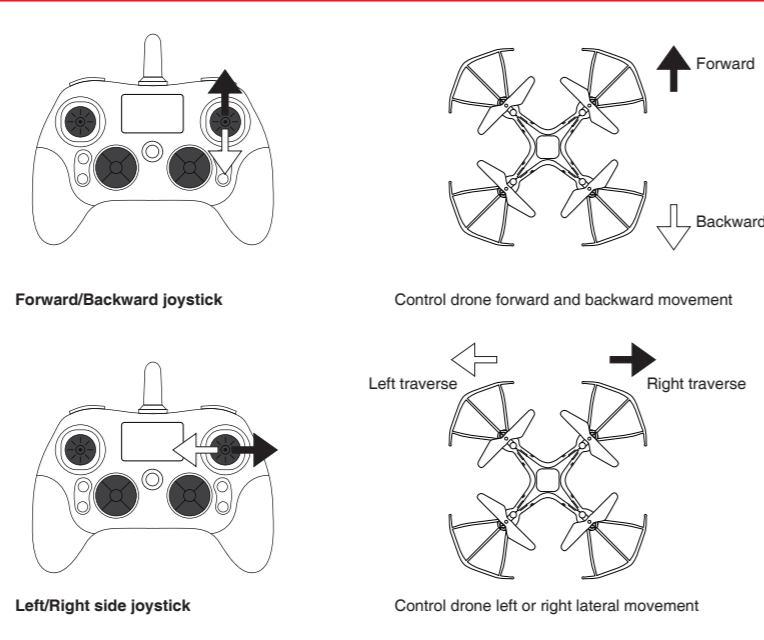
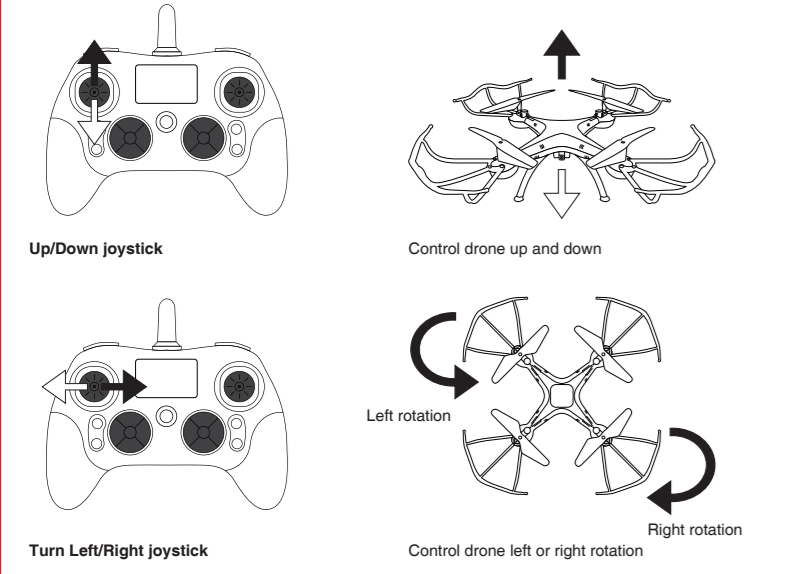
Step 1:
Turn on the power switch of drone, and place the drone on a flat location, the status indicator start flashes, the gyroscope start reading the midpoint.

Step 2:
Turn on the remote control power switch, push the Up/Down joystick from the lowest to the highest, and then pull it down to lowest position. Drone are ready for takeoff.



Operation Method

Note: To avoid losing control, always pay attention when controlling the drone.



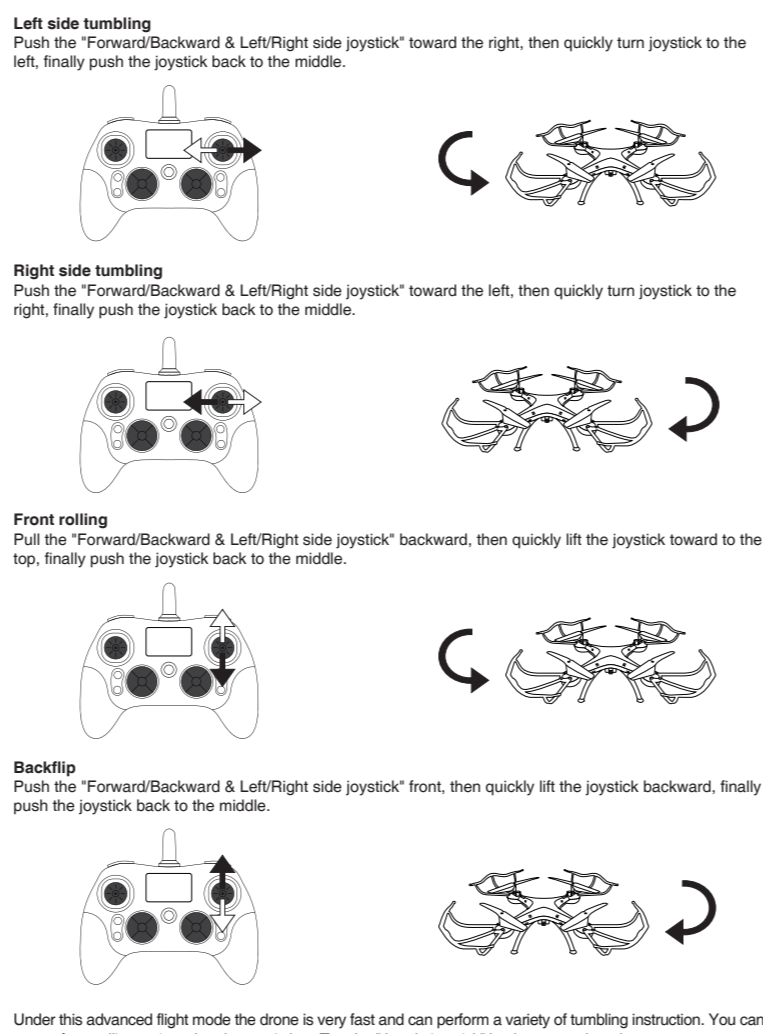
Sensitivity Settings

The drone have three operation modes: low, intermediate and advanced.

Tap the **Forward/Backward & Left/Right side joystick** enter setup mode
Turn on the remote control to enter the low axis mode (sensitivity up to 40%)
When the remote control to issue "DI" sound twice, axis into the intermediate mode (sensitivity up to 60%)
When the remote control to issue "DI" sound three times, axis into the advanced mode (sensitivity up to 100%)
The sensitivity can be adjusted by the fine-tuning button on the remote control, then press and hold the button for one second to confirm or exit.

3D rolling action
When all the of the basic movements are skilled, you can try to perform some advanced action. Click on the rolling action button of the remote control, the remote emits a continuous sound, the drone will turn into the 3D rolling action mode.

Follow this Instruction can perform some 360-degree rolling action. In order to perform rolling action, ensure to maintain the height of drone.



Notice

Please read this instruction manual carefully before operating the product.

Please do not operate the product in the gale.

The flying ground should be the local field and legal for remote control flying. Please do not operate the product in forbidden zone or around people or animals.

Keep the aircraft a certain distance (at least 2-3 meters) from others when playing together.

Warning

This product is suitable to be used by people who has operating experience in flying model or aged no less than 14 years old.

This product is not a toy but a precise equipment that integrating mechanics and electronics with expertise of aerodynamics and high-frequency transmitting. It requires to be correctly assembled and debugged so as to prevent the accident from being happened. The user should operate or control it in a safe way.

Please do not put the product in the mouth to prevent choking hazard of small parts.

Please do not put the finger into available interspaces.

Please do not play the product in a brutal way such as throwing, crashing or twisting it.

Please store the smaller-sized product accessories in places that are out of reach of children, in order to avoid the occurrence of accidents.

The product is very powerful. For first time flight, it shall be observed that the joystick must be slowly pushed in order to prevent the product from ascending too quickly and result in unnecessary collision and damages.

When the flight is ended, the power supply of the remote control shall be switched off and then followed by switching off the power supply of the product.

Avoid placing the batteries in places with high temperatures and exposure to heat.

When young children are operating the product, it shall be ensured that the adults are guiding and making sure the product control is within the viewing range of the controller (or instructor)such that it makes the control very convenient.

When the product is not in use, please switch off the power supplies of both the aircraft and the remote control, and remove the batteries in the remote control.

Please note that we won't take any responsibility for any wrong operation as this may result in severe injury or loss of property, and we cannot control the operating process during the time when the user assemble or use this product.

Once this product is sold, we won't be responsible for any safety responsibility during the time the user operates or uses or controls this products.

Care and Maintenance

Always use dry and soft cloth to clean this product.

Avoid this product to be exposed to sunlight or heat.

Avoid immersing these toys into water, otherwise, the electronic parts may be damaged.

Regularly check and inspect the plug and other accessories. If any damages are discovered, please immediately stop using it, until it is completely repaired in good working condition.

IMPORTANT: BATTERY INFORMATION

CAUTION:

1. TO AVOID BATTERY LEAKAGE

a. Always follow the instructions carefully. Use only batteries specified and be sure to insert them correctly by matching the + and - polarity markings.

b. Do not mix old batteries and new batteries or standard (carbon-zinc) with alkaline batteries.

c. Remove exhausted or dead batteries from the product.

d. Remove batteries if product is not to be played with for a long time.

e. Do not short-circuit the supply terminals.

f. RECHARGEABLE BATTERIES: Do not mix these with any other types of batteries. Always remove from the product before recharging. Recharge batteries under adult supervision. DO NOT RECHARGE OTHER TYPES OF BATTERIES.

2. Should this product cause, or be affected by, local electrical interference, move it away from other electrical equipment. Reset (switching off and back on again or removing and re-inserting batteries) if necessary.

FCC Statement

This device complies with the part 15 of the FCC rules. Operation is subject to the following two conditions:(1) this device may not cause harmful interference, and (2) this device must accept any interference received, including interference that may cause undesired operation.

Caution: changes or modifications not expressly approved by the party responsible for compliance could void the user's authority to operate the equipment.

NOTE: This equipment has been tested and found to comply with the limits for a Class B digital device, pursuant to Part 15 of the FCC Rules. These limits are designed to provide reasonable protection against harmful interference in a residential installation. This equipment generates, uses and can radiate radio frequency energy and, if not installed and used in accordance with instructions may cause harmful interference to radio or television reception, which can be determined by turning the equipment off and on. The user is encouraged to try to correct the interference by one or more of the following measures:

- Reorient or relocate the receiving antenna.
- Increase the separation between the equipment and receiver.
- Connect the equipment into an outlet on a circuit different from that to which the receiver is connected.
- Consult the dealer or experienced radio/ TV technician for help.

FCC ID: 2ADM5-TL-0021

Keep All Relevant Information for Future Reference