

PRODUCT MANUAL

LED WIFI CONTROLLER >>>

I. Product model: ZJ-MWIR-RGB Product image



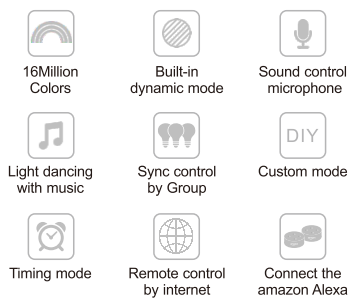
①

II. Product specification:

Product category: LED constant pressure controller (DC)
 Product name: MINI IR 24 key WIFI controller
 Product number: ZJ-MWIR-RGB/RGBW/RGBWC
 Control principle: WIFI
 APP type: Magic Home Pro
 Mobile version: Android4.0 / IOS9.0
 LED drive types: constant voltage
 Channel: RGB/RGBW/RGBWC
 Input voltage: DC5-28V
 Output current: 4A/CH
 Application range: low voltage lamp, panel lamp, etc.
 Constant pressure drive product
 Connect method: Common anode
 Waterproof level: IP20
 Working temperature: -20 To + 55 degrees Celsius
 Control distance: empty barrier-free distance: 50 meters, obstacle distance: 20 to 25 meters
 Product certification: CE ROHS FCC
 Product size: 53mm*24mm*11mm(length * width * height)
 Product box size: 130mm*90mm*18mm(length * width * height)
 Net weight: 17.5g / 18g / 18.5g
 Product gross weight (including packaging) : 42g / 42.5g / 43g

②

III. Product features:



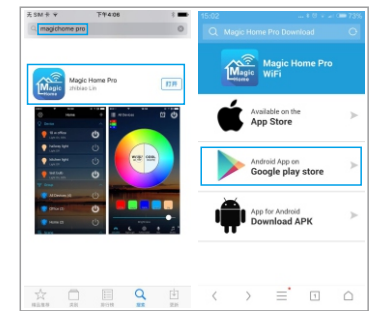
- Support for 16 million kinds of color and brightness adjustment control
- Channel: RGB/RGBW/RGBWC
- Support for color and dynamic mode customization and preservation
- Group synchronization control function
- The switch time, static, and dynamic display of the light can be set
- Lights and music sync functions
- A variety of built-in dynamic model, and the custom dynamic model

③

- Remote control function
- The microphone sound control function
- The camera takes the background color and the setting of the scene

IV. Mobile APP installation instructions:

- Product software APP name: Magic Home Pro
- Apple users can search "Magic Home Pro" in "APP Store"; Android users can search "Magic Home Pro" in "Google Play Store" or from browsers. The APP is free to download and use.



④



b. Scan the QR code below to download and install the APP for free. (Please click "open the web link from the browser" when you use Wechat to scan the QR code, for the Wechat itself has no browser function.)



Scan the QR code to download the APP

connect, open the Magic Home Pro APP, there are three kinds of connection mode to connect the controller

The first: choose to connect directly to the controller, enter the APP control interface.

The second: choose to connect to the router, write the router password, mobile phone choose to connect the router network signal, open the Magic Home Pro APP, enter the software APP control interface

The third: choose to connect the router and keep the router in a network connection, remote control can be performed

Common problem analysis:

1. How to set up with Alexa?

To work with Alexa, Make sure you registered an account from app and had connected wifi LED Controller to your router.

Then please add the skill named "Magic Home" from Alexa App and login with your Account. Then Alexa will discovery your new devices under SmartHome, and now succeeded.

Note: Currently wifi LED Controller can only support ON/OFF via Alexa voice control. We will develop the color changing & dimming skill skill in the near further.

⑤

See Alexa Skill of Magic Home : <https://www.amazon.com/gp/product/B01HFZ19AK>

2. The controller cannot connect to the router?

Answer: please check if the router password is correct; if it is correct while the controller still fail to connect to the router, please shut down the controller and the router; then turn on the router first and then turn on the controller after 30s. You can run the APP around 2 minutes later. If the problem remains after above operation, please restore factory settings.

3. How to restore factory setup?

The physical switch controller four times (the APP helps with a detailed diagram) operates as follows:

In the case of the shutdown controller state:

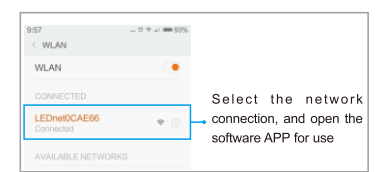
- The first time you connect the controller, wait for 1 to 3 seconds and then turn off the controller.
- The second time you connect the controller, wait for 1 to 3 seconds and then turn off the controller.
- The third time you connect the controller, wait for 1 to 3 seconds and then turn off the controller.
- The fourth time you connect the controller, the lamp or light bar that connects the controller will flicker quickly a few times, indicating that the controller has restored the factory settings successfully.

⑥

VI. The android operating interface instructions:

In the use of the APP, please make sure that the controller circuit and power supply is normal connection.

a) Single connection: do not need to register account, open cell phone WIFI network, find "LEDnet *****" signal and connect.



Select the network connection, and open the software APP for use

b) Add the controller's signal to the router for connection control.

When registering the account, please connect the controller's WIFI signal to the router (make sure the network is accessible)

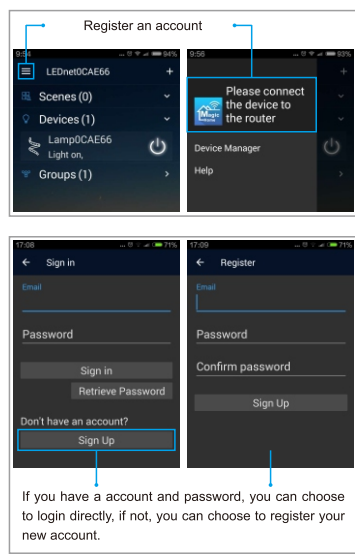
⑦



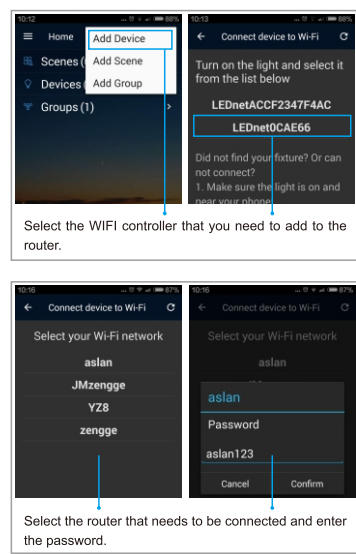
V. Usage description:

- Please use this product in a dry environment
- Please use the voltage for dc current of dc12-24v, and not to use 220V alternating current.
- The product is a common anode connection. After installed the WIFI controller, open mobile WIFI network signal, find "LEDnet *****" signal and

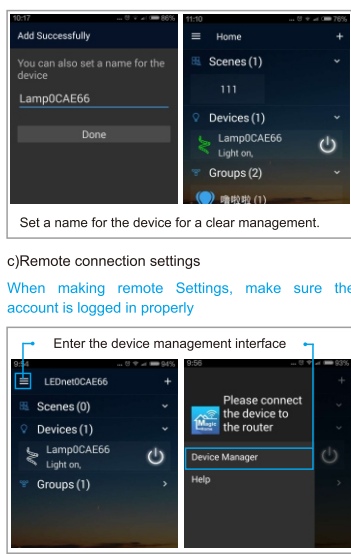
⑧



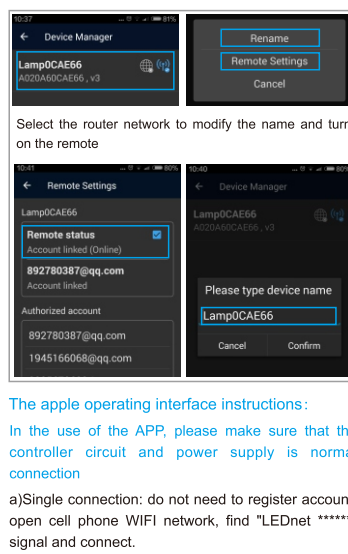
⑨



⑩



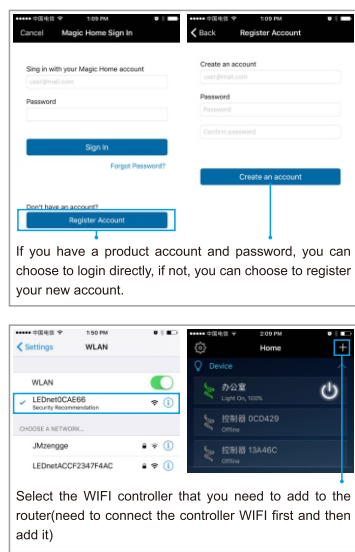
⑪



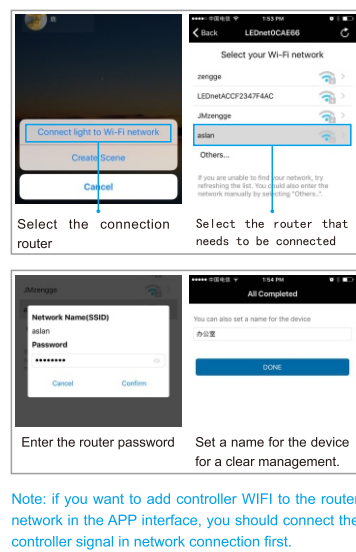
⑫



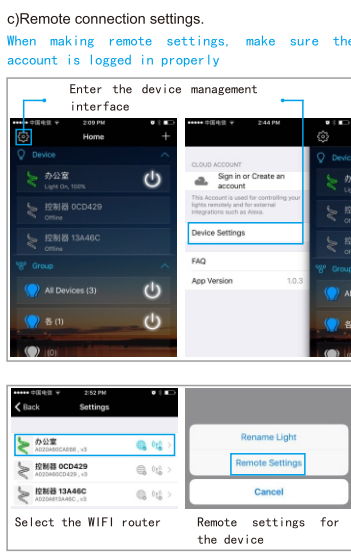
⑬



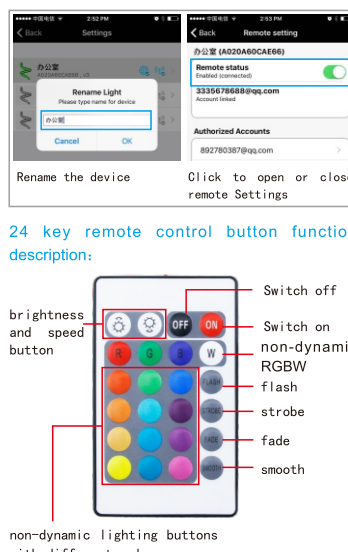
⑭



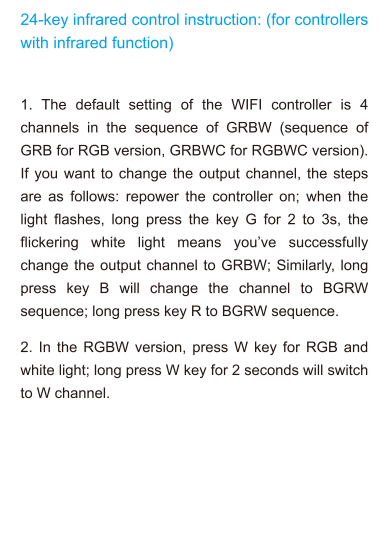
⑮



⑯



⑰



⑰

Note: if you want to add controller WIFI to the router network in the APP interface, you should connect the controller signal in network connection first.

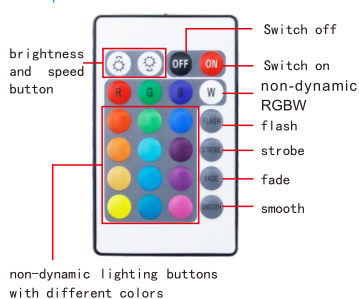
The apple operating interface instructions:
 In the use of the APP, please make sure that the controller circuit and power supply is normal connection

a) Single connection: do not need to register account, open cell phone WIFI network, find "LEDnet *****" signal and connect.

b) Add the controller's signal to the router for connection control.

When registering the account, please connect the controller's WIFI signal to the router (make sure the network is accessible)

24 key remote control button function description:



⑰

24-key infrared control instruction: (for controllers with infrared function)

- The default setting of the WIFI controller is 4 channels in the sequence of GRBW (sequence of GRB for RGB version, GRBWC for RGBWC version). If you want to change the output channel, the steps are as follows: repower the controller on; when the light flashes, long press the key G for 2 to 3s, the flickering white light means you've successfully change the output channel to GRBW; Similarly, long press key B will change the channel to BGRW sequence; long press key R to BGRW sequence.
- In the RGBW version, press W key for RGB and white light; long press W key for 2 seconds will switch to W channel.

⑰

FCC Caution.

This device complies with part 15 of the FCC Rules. Operation is subject to the following two conditions: (1) This device may not cause harmful interference, and (2) this device must accept any interference received, including interference that may cause undesired operation.

Any Changes or modifications not expressly approved by the party responsible for compliance could void the user's authority to operate the equipment.

Note: This equipment has been tested and found to comply with the limits for a Class B digital device, pursuant to part 15 of the FCC Rules. These limits are designed to provide reasonable protection against harmful interference in a residential installation. This equipment generates uses and can radiate radio frequency energy and, if not installed and used in accordance with the instructions, may cause harmful interference to radio communications. However, there is no guarantee that interference will not occur in a particular installation. If this equipment does cause harmful interference to radio or television reception, which can be determined by turning the equipment off and on, the user is encouraged to try to correct the interference by one or more of the following measures:

- Reorient or relocate the receiving antenna.
- Increase the separation between the equipment and receiver.
- Connect the equipment into an outlet on a circuit different from that to which the receiver is connected.
- Consult the dealer or an experienced radio/TV technician for help.

This equipment complies with FCC radiation exposure limits set forth for an uncontrolled environment. This equipment should be installed and operated with minimum distance 20cm between the radiator & your body.