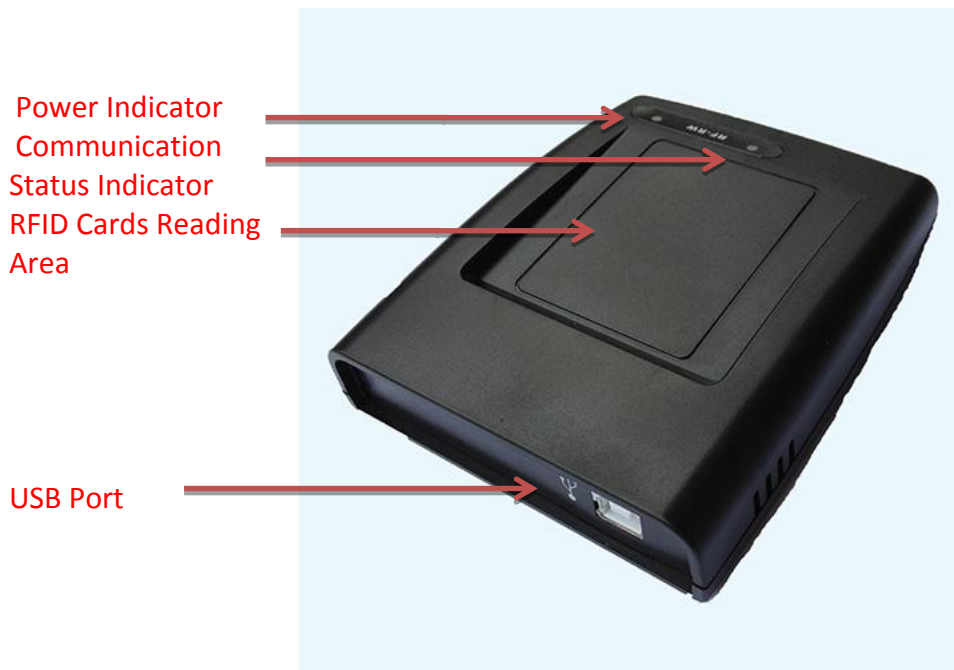


# DP700S USER MANUAL

## 1. Summary

### 1.1 What are DP700S?

The DP700S card reader is an essential front-end processing device for developing IC Card related products and system integration. Applications such as access control, identity authentication, inquiries, stored value and other smart card management systems. It utilizes 13.56MHz communication frequency and conforms to the ISO14443 Type-A protocol. It supports non-contact smart cards conforming to ISO14443 Type-A, such as: Mifare S50, Mifare S70, MF1ICL10, Mifare Pro, Mifare Desfire, Mifare Ultralight, Hua Hong 1102, ETC.



### 1.2 RFID Card Types and Functions

Item	Card Types	Functions
1	User Card	This card can open registered locks only
2	Data Card	Read the open lock records and lock information
3	Time Change Card	Setup lock clock
4	Setup Card	Write preset information into lock
5	Management Card	Open any lock does not clear the registered card/password
6	Control Card	① Open any lock ② Clear registered card/password
7	Authorization Card	Authorize ELMS software and locks

## 1.3 Operation System Composition

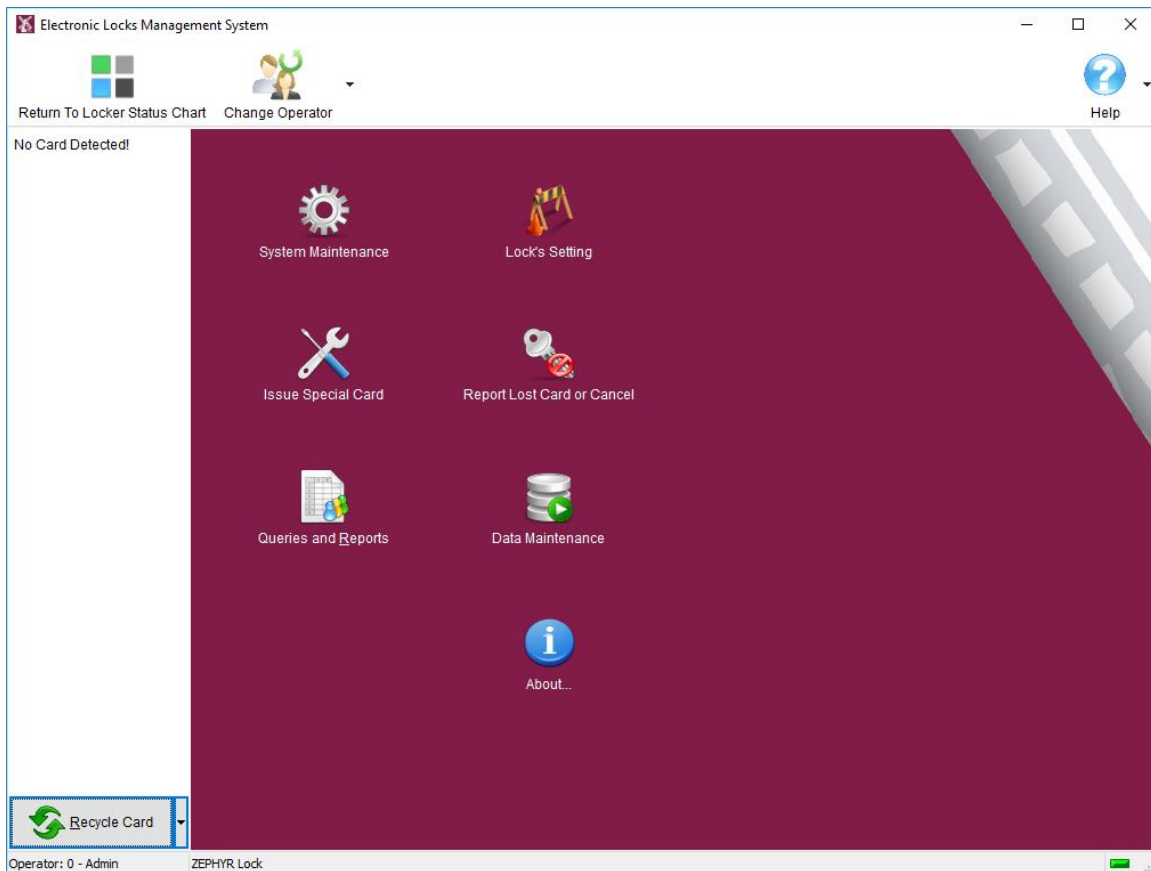
Operation System consisted of PC based Electronic Lock Management System (ELMS) software and RFID Card.

System Requirements:

- \* OS: Windows XP/Windows7/Windows8/ Windows10, UNIX and LINUX.
- \* Electronic Locks Management System (ELMS)
- \* USB A-B cable

## 2. Operating Steps

1. Connect the DP700S to the USB port of the computer via a USB cable. Plug-and-play USB2.0 (HID Protocol), no need to install any drivers.
2. Run the ELMS software as shown in the photo below



3. Place cards on the DP700S and follow the prompts to perform the appropriate card operation.

## FCC Information and Copyright

This equipment has been tested and found to comply with the limits for a Class B digital device, pursuant to part 15 of the FCC Rules. These limits are designed to provide reasonable protection against harmful interference in a residential installation. This equipment generates uses and can radiate radio frequency energy and, if not installed and used in accordance with the instructions, may cause harmful interference to radio communications. However, there is no guarantee that interference will not occur in a particular installation. If this equipment does cause harmful interference to radio or television reception, which can be determined by turning the equipment off and on, the user is encouraged to try to correct the interference by one or more of the following measures:

- Reorient or relocate the receiving antenna.
- Increase the separation between the equipment and receiver.
- Connect the equipment into an outlet on a circuit different from that to which the receiver is connected.
- Consult the dealer or an experienced radio/TV technician for help.

FCC ID:XLY-DP700.

The device has been evaluated to meet general RF exposure requirement. The device can be used in portable exposure condition without restriction.

### 15.19 Labelling requirements.

This device complies with part 15 of the FCC Rules. Operation is subject to the following two conditions:

- (1) This device may not cause harmful interference, and
- (2) This device must accept any interference received, including interference that may cause undesired operation.

Changes or modifications not expressly approved by the party responsible for compliance could void the user's authority to operate the equipment.