

2.4GHz Digital  
VIDEO BABY MONITOR  
MODEL:ZR303TX-RX



USER’ S GUIDE V1.0

WELCOME...

to you new digital Baby Monitor!

Thank you for purchasing the product.Now you can see and hear your baby sleeping in the other room or you can monitor your older children in their playroom.

This User's Guide provides you with all the information you need to get the most from your product.

Before you can use the baby monitor, we recommend you insert and fully charge the battery in the parent unit, so that it continues to work if you disconnect it from the mains power to carry it to another location. Please read the safety instructions on page 6 before you install the units.

PACKING LIST



1×Parent Unit

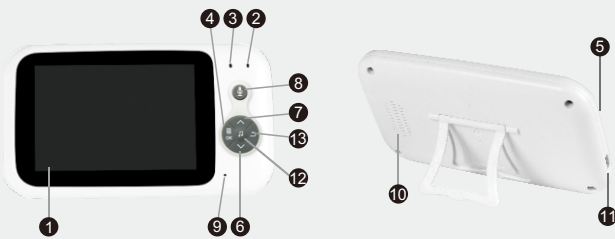


1×Baby Unit



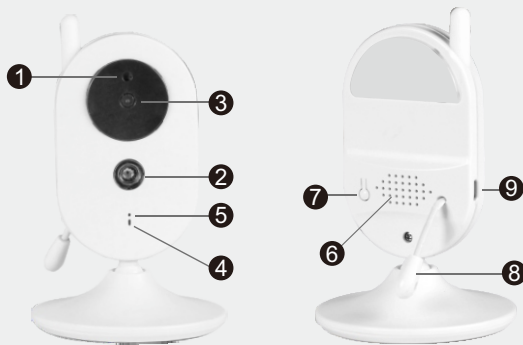
2×Power adapter

Overview of your Parent Unit



- 1.Lcd display
- 2.Vox indicating led
- 3.Power indicating led
- 4.Menu key/OK
- 5.Power key
- 6.Volume-key/Down key (menu screen)
- 7.Volume+key/Up key(menu screen)
- 8. PTT key
- 9.Microphone
- 10.Speaker
- 11.Power adapter connector
- 12.Music control key.
- 13. Return

Overview of your Baby Unit



- 1.Light Sensor
- 2.Infrared LED
- 3.Camera Lens
- 4.Power LED
- 5.Microphone
- 6.Speaker
- 7.Pair key
- 8.Temperature sensor
- 9.Power adapter connector

Table of contents

1.Safety instructions.....	6
2.Getting started.....	7
2.1 Baby unit power supply.....	7
2.2 Parent unit power supply.....	8
3.Using the Baby Monitor.....	9
3.1 Setting up.....	9
3.2 Pairing camera.....	10
3.3 Night vision.....	10
3.4 Music player.....	10
3.5 Talk function.....	10
3.6 Adjusting the volume.....	10
3.7 Reset the parent unit.....	10
4.Monitoring screen icons.....	11
5.Menu Options.....	12
5.1 Main menu.....	12
5.2 Camera Registration.....	13
5.3 Alarm.....	13
5.4 Settings.....	14
5.5 Languages.....	15
6.Wall mounting instructions.....	16

1. Safety Instructions

WARNING

This baby monitor is compliant with all relevant standards regarding electromagnetic fields and is, when handled as described in the User's Guide, safe to use. Therefore, always read the instructions in this Users Guide carefully before using the device.

- Adult assembly is required.Keep small parts away from children when assembling
- This product is not a toy.do not allow children to play with is.
- This baby monitor is not a substitute for responsible adult supervision.
- Do not place the baby unit or cables in the cot or within arm's reach of the baby (at least 1 meter away).
- Keep the cords out of reach of children
- Do not use the baby monitor near water or a heat source
- Only use the power adapters provided
- Do not touch the plug contacts with sharp or metal objects,

2. Getting started

2.1 Baby unit power supply



- 1. Connect the small plug of the power adapter to the baby unit and the other end to the mains socket.

**NOTE :only use the power adapter provided**

- 2. A green light led will display indicate the baby unit is working

2.2 Parent unit power supply



**Charging the parent unit fully before use is recommended**

This will allow the unit to operate on battery in the event of a power failure

- 1.Connect the plug of the power adapter to the parent unit and the other end to the mains socket

**NOTE :only use the power adapter provided**

- 2.The LCD screen illuminates and starts up automatically after a few seconds.
- 3.Press and hold the power key at least 3 seconds to turn on the parent unit.

3. Using the Baby Monitor

3.1 Setting up

- Place the baby unit in a convenient location(e.g.on a table)and point the camera lens towards the area you want to monitor. Adjust the baby unit until you are satisfied with the image in the parent unit.
- To mount the baby unit on the wall, see section"9. wall mounting instruction" for more details.



NOTE

Do not place the baby unit within baby's reach! if there is interference on the picture or sound,try moving the units to different location, and ensure, they are not close to other electrical equipment.

9

3.2 Pairing camera

The enclosed baby unit has already been registered, You do not need to register it again unless the baby unit loses its link with parent unit,see section"5.2Camera registration"for more details.

3.3 Night vision

The baby unit has 1 high-intensity infrared LED for picking up clear images in the dark.

3.4 Music Player

Press and hold key at least 3 seconds will turn on the music player and play lullaby,through the baby unit; long press the key 3 seconds again will turn off it.

3.5 Talk Function

Press and hold key on the parent unit to talk to your baby through the baby unit ioudspeaker.

3.6 Adjusting the volume

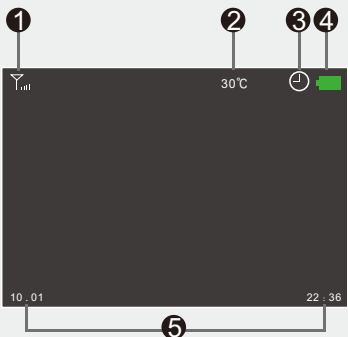
When the video is playing mode, press key to decrease volume or key to increase volume, The display will show the current volume for 5 seconds.

3.7 Reset the parent unit

Press and hold the power key at least 3 seconds,the parent unit will be forced to restart.

10

4.Monitoring Screen Icons

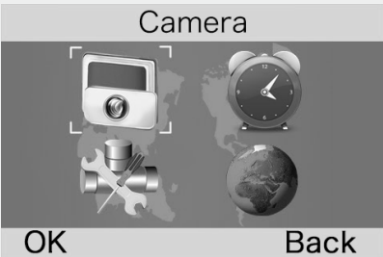


1. Signal strength indicator
2. Temperature of the baby's room
3. Alarm activated
4. Battery indicator
5. Date and time

11

5.Menu Options

5.1Main menu



Press"Menu"key at monitoring screen will enter the main menu, It contains 4 items:

- 1.Camera
- 2.Alarm
- 3.Settings
- 4.Languages

You can press the "Up" key or "Down" key to move the cursor to select an item and press"Menu"key will enter the sub-menu which you selected.

Press"Return"key will back to monitoring screen

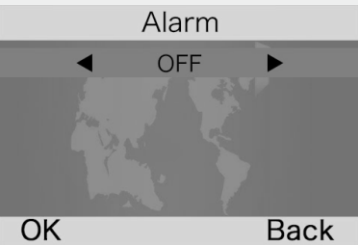
12

5.2 Camera Registration



Press "menu" key to entry registering screen, then push the pair key on the back of baby unit within 10 seconds.

5.3 Alarm



Press"music"key to choose item "Up"and"down"key to change value

13

5.4 Settings

5.4.1Time and date

There are contains 2 items in this menu  
✦ Set time/date



Press"music"key to choose item "Up"and"down"key to change value

5.4.2 Temperature unit

Switch the unit to Celsius of Fahrenheit

5.4.3 Anti-flicker

You are able to adjust the frequency of 50/60 Hz to suit your lighting for anti-flicker

5.4.4 System mode

This menu allows you to choose the working mode from the following:Normal mode from the /VOX mode

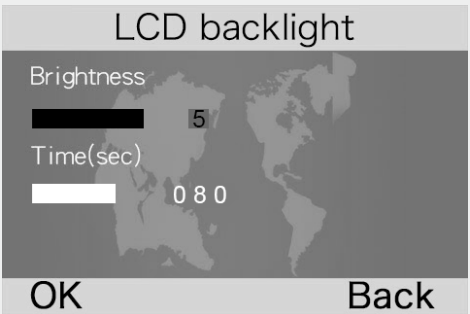
14

5.4.5 VOX Sensitivity

Switch the Vox sensitivity at Low/Medium/High level

5.4.6 LCD backlight

You are be able to adjust the brightness of the LCD you are viewing and the LCD backlight active time in menu operation.



5.5 Language

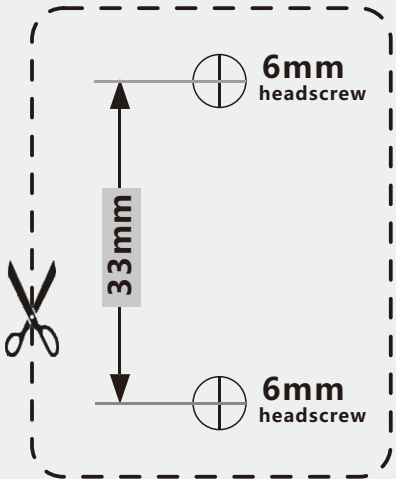
Language setting menu allows you to choose your language from the following:

- 1、 English
- 2、 French
- 3、 Spanish
- 4、 Portuguese
- 5、 Italian
- 6、 German
- 7、 Turkish
- 8、 Russian

15

6. Wall mounting instructions

1. Use the template below to mark the wall in the correct places to drill holes for wall- mounting screws



2. Insert 4mm head screws (not supplied) into the holes and tighten the screws. Then,align your baby unit with the screws and push it down.
3. Point the camera lens towards the ares you want to monitor. Adjust the baby until you are satisfied with the image in the parent unit.

16

FCC WARNING

This device complies with part 15 of the FCC Rules. Operation is subject to the following two conditions:  
(1) this device may not cause harmful interference, and  
(2) this device must accept any interference received, including interference that may cause undesired operation. Any changes or modifications not expressly approved by the party responsible for compliance could void the user's authority to operate the equipment. NOTE: This equipment has been tested and found to comply with the limits for a Class B digital device, pursuant to Part 15 of the FCC Rules. These limits are designed to provide reasonable protection against harmful interference in a residential installation. This equipment generates, uses and can radiate radio frequency energy and, if not installed and used in accordance with the instructions, may cause harmful interference to radio communications. However, there is no guarantee that interference will not occur in a particular installation. If this equipment does cause harmful interference to radio or television reception, which can be determined by turning the equipment off and on, the user is encouraged to try to correct the interference by one or more of the following measures:  
-- Reorient or relocate the receiving antenna.  
-- Increase the separation between the equipment and receiver.  
-- Connect the equipment into an outlet on a circuit different from that to which the receiver is connected.  
-- Consult the dealer or an experienced radio/TV technician for help. The device has been evaluated to meet general RF exposure requirement. The device can be used in portable exposure condition without restriction  
FCC ID: 2AQMY-ZR303RX

17