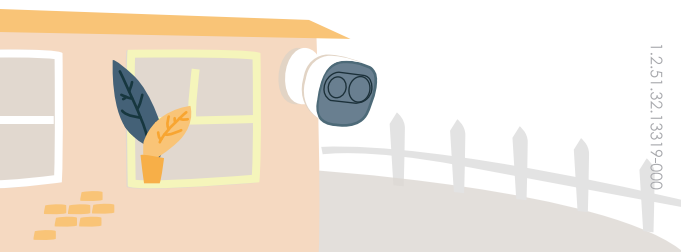




# Quick Start Guide

Version 1.0.2



1.2.51.32.13319-000

## Packing List



Device x 1



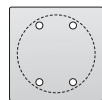
QSG x 1



Power Adapter x 1



Bracket x 1



Installation Position Map x 1



Pry Bar x 1

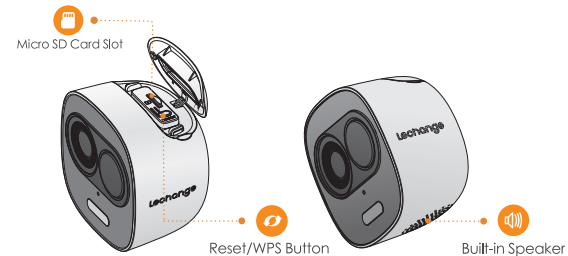
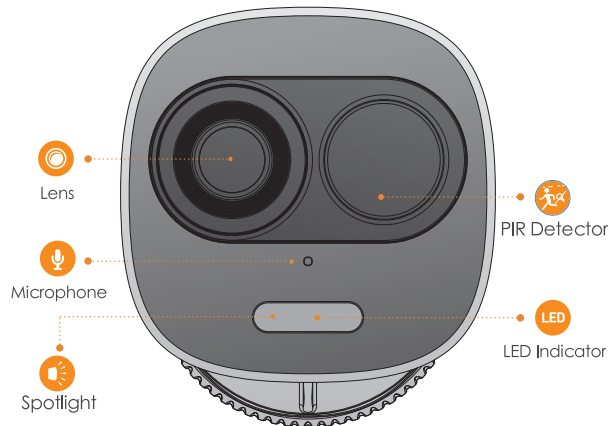


Screw Package x 5



Cable Clip Package x 1

## Product Introduction



**Note:** The top cap can be opened with the pry bar from the accessory kit.  
Press the Reset/WPS Button to enable WPS.  
Press the Reset/WPS Button for 10 seconds to reset the device.

The pattern of the LED indicator is included in the following table.

LED Indicator Status	Device Status
Red light on	<ul style="list-style-type: none"><li>Booting</li><li>Device malfunction</li></ul>
Green light flashing	Waiting for network
Green light on	Operating properly
Red light flashing	Network connection failed
Light off	<ul style="list-style-type: none"><li>Powered off/LED turned off</li><li>Rebooting after reset</li></ul>
Green and Red light flashing alternately	Firmware updating

## Operation with Lechange App

### Step 1

Connect the device to power source with the power adapter.

### Step 2

Connect your smartphone to your Wi-Fi network and scan the "Lechange" QR code on the packing box. Then download and install the Lechange App.



**Note:** If you have more than one device, follow step 4 to add them one by one. If the Wi-Fi network changed, reset the device and follow step 4 to add it again.

### Step 3

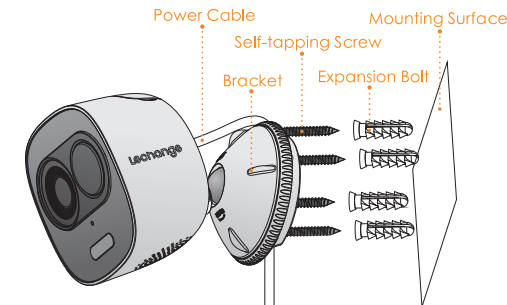
Run Lechange App, and register an account for first use.

### Step 4

Follow the steps below to add device.

## Installing Device

**Note:** Make sure the mounting surface is strong enough to hold at least three times of the device weight.



- Step1** Drill screw holes on the mounting surface as the installation position map shows and put in the expansion bolts.
- Step2** Open the bracket and pull the power cable through the cable tray on the bottom.
- Step3** Align the screw holes on the bracket to those on the mounting surface, then put in and fasten the self-tapping screws.
- Step4** Attach the other half of the bracket to the device, then adjust the position of the power cable and fix the bracket.

## Disclaimer

- This quick start guide is for reference only. Minor difference might be found in user interface.
- All the design and software here are subject to change without prior written notice.
- All trademarks and registered trademarks mentioned are the properties of their respective owners.
- Please visit our website or contact your local service engineer for more information.
- If there is any uncertainty or controversy, please refer to our final explanation.