



About the Guide

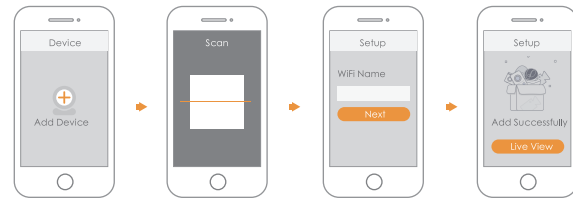
- This quick start guide is for reference only. Minor difference might be found in user interface.
- All the design and software here are subject to change without prior written notice.
- All trademarks and registered trademarks mentioned are the properties of their respective owners.
- Please visit our website or contact your local service engineer for more information.
- If there is any uncertainty or controversy, please refer to our final explanation.

Step 4

Wait for booting to be finished, and then the camera indicator flashes with green light.

Step 5

Do the following operations to finish adding camera.



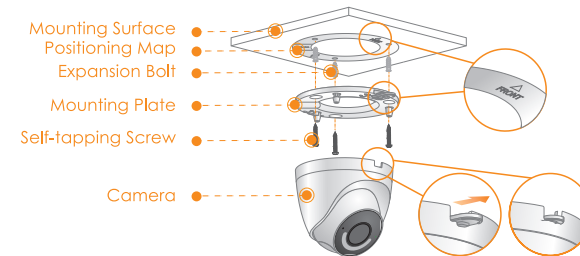
Note:

- If you have more than one camera, do step 5 to add them one by one.
- If the Wi-Fi network has changed or the indicator status goes wrong, reset the camera, and then do step 5 to add it again.

Installing Camera

Note: Make sure that the mounting surface is strong enough to hold at least three times of the camera weight.

Ceiling Mount



Step1 Drill screw holes on the mounting surface as the positioning map shows, and then put in the expansion bolts.

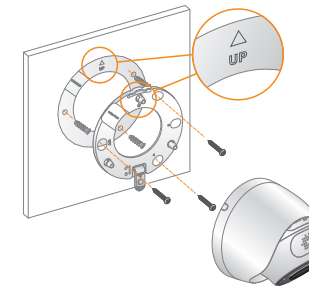
Step2 Attach the mounting plate to the mounting surface with the self-tapping screws.

Step3 Push the camera to attach it to the mounting plate, power it up, and then adjust the lens to the ideal angle.

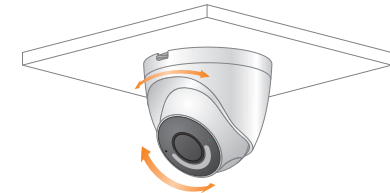
Wall Mount

Note

- For the installing procedures, see the steps in "Ceiling Mount."
- Make the UP arrow on the positioning map and mounting plate upward.



Adjusting angle





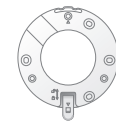
Quick Start Guide

Version 1.0.0

Packing List



Camera ×1



Mounting Plate ×1



Positioning Map ×1



Power Adapter ×1



Waterproof Connector ×1

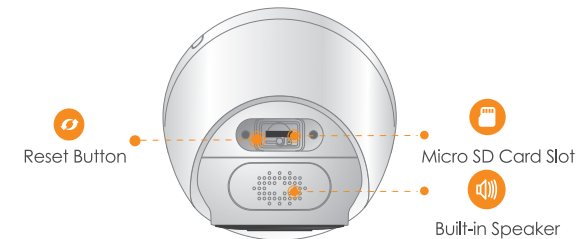
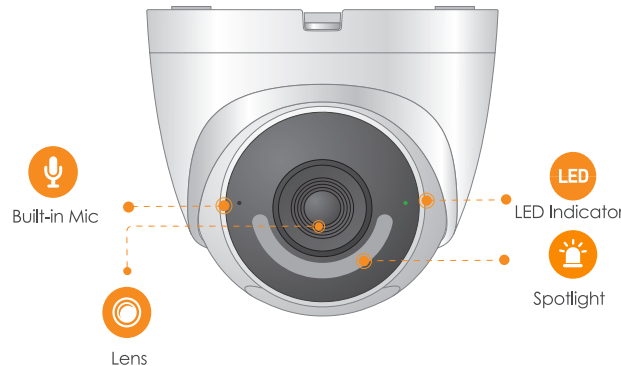


Screw Package ×1



QSG ×1

Camera Introduction



Note: Press and hold the reset button for 10 s to reset the camera.
Double press the reset button to enable the camera hotspot.

The pattern of the LED indicator is included in the following table.

LED Indicator Status	Device Status
Off	<ul style="list-style-type: none">Powered off/LED turned offRebooting after reset
Red light on	<ul style="list-style-type: none">BootingDevice malfunction
Green light flashing	<ul style="list-style-type: none">Waiting for networkEnter pairing mode
Green light on	Operating properly
Red light flashing	<ul style="list-style-type: none">Network connection failedPairing failed
Green and red light flashing alternately	Firmware updating

Operating With Imou App

Step 1

Scan the following QR code or search "Imou" in Google Play or App Store to download and install Imou App.

Note: If you have installed the App, update it to the latest version.



Step 2

Run Imou App, and then register an account for the first use.

Step 3

Connect the camera to power source with the power adapter.