 ZTV ELECTRON	<b>PRODUCT</b>  <b>INSTRUCTION</b>		MODEL: ZT-812	<b>PAGE:</b> 1 OF 4
			DESCRIPTION Wireless Camera	
<h1>ZT-815T</h1> <h2>WIRELESS CAMERA USER'S MANUAL</h2>				
REVISIONS	DESCRIPTION		DATE	DESIGN
SHENZHEN ZHONGWANG ELECTRON CO., LTD			APPROVAL	
PAGES TOTAL	FILE NUMBER	ISSUE DATE	CHECK	
4			DESIGN	

**Operation instruction**

1. Connecting the receiver antenna. (Figure 1)
2. Connecting the 9V direct current stabilizer (Figure 2), pilot lamp lighting (Figure 3).
3. Connecting the audio and video (figure 4) output with the input to the monitor, the television should be set on A/V model.
4. Connecting the audio and video output with the input of the transmitter.
5. Plug power jack of DC power supply(8V , 300mA)into the power socket of the CMOS camera(figure 6).(Battery of the same voltage is acceptable.)
6. Turning the micro-adjustment knob (figure 5)on the receiver till receiving the picture of the wireless camera.
7. Fine tune to the desire position till the image of CMOS camera is received.
8. Adjust the lens of the CMOS camera (figure 7) to best position.

**Notice**

1. The machine is supplied with many different types, please provide with electric power according the value on the label.
2. Obstructs by the building and so in will cause attenuation.
3. Normally that the machine will slightly warm up during operation.
4. Should any other malfunctions occur, please contact local distributor.
5. Under normal operational conditions, one year's warranty is granted .if there are quality problems within 3 months, this company will unconditionally replace with a new camera.

**Waning**

This product is for the sole purpose of security and applicable for monitoring in residential houses, shop sand companies the users shall observe local rules, regulations and laws, and shall be solely liable in this regard, this company shall not be liable for any illegalities therein.

Note: Any change of the product will void the FCC authorization.

Note: This equipment has been tested and found to comply with the limits for a Class B digital device, pursuant to part 15 of the FCC Rules. These limits are designed to provide reasonable protection against harmful interference in a residential installation. This equipment generates, uses and can radiate radio frequency energy and, if not installed and used in accordance with the instructions, may cause harmful interference to radio communications. However, there is no guarantee that interference will not occur in a particular installation. If this equipment does cause harmful interference to radio or television reception, which can be determined by turning the equipment off and on, the user is encouraged to try to correct the interference by one or more of the following measures:

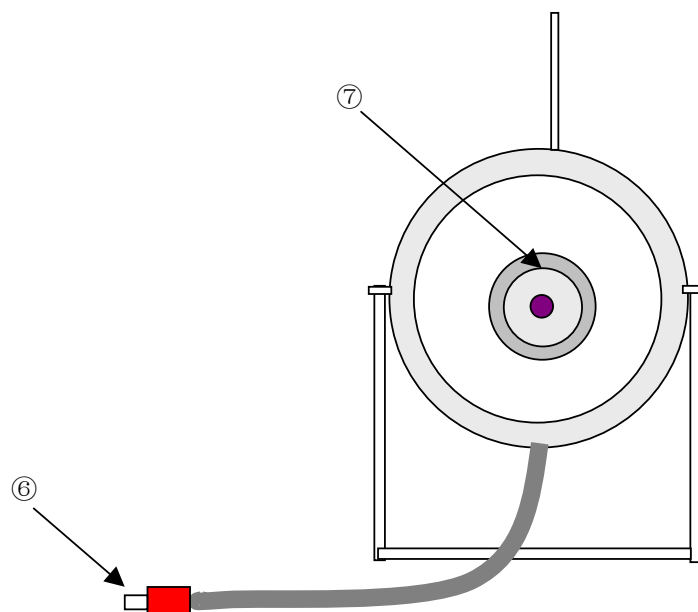
- Reorient or relocate the receiving antenna.
- Increase the separation between the equipment and receiver.
- Connect the equipment into an outlet on a circuit different from that to which the receiver is connected.
- Consult the dealer or an experienced radio/TV technician for help.

SHENZHEN ZHONGWANG ELECTRON CO.,LTD		TEL: +86-755-8336 1499 FAX: +86-755-8336 1433
http://www.ztv.cc		
FILE NUMBER:	MODEL: ZT-815T	PAGES: 3 OF 4
Technical data		
ITEM	TYPE	
Transmission		
Frequency	2.414~2.468GHz 4cH	
Electric power:	DC 8V	
Video input:	1.0V <sub>P-P</sub> (MAX)	
Power consumption current	180mA	
Audio input:	2V <sub>P-P</sub> (Max.)	
Effective range(no obstacles)	30m	
CMOS		
IMAGE SENSOR	1/3-inch CMOS Image Sensor	
CMOS TOTAL PIXELS	628*582	
SYNC SYSTEM	INTEMAL	
MINIMUM ILLUMINATION	1 L <sub>μ</sub> x F1.2 5600° K/ 0 L <sub>μ</sub> x(IR ON)	
RESOLUTION	330TV Line	
WHITE BALANCE	Mode: AWB(Zero color rolling)	
	Range:3200~10000° K	
GAIN CONTROL	AGC	
S/N RATIO	48dB(Min)/60dB(TYP)(AGC OFF)	
ELECTRONIC SHUTTER	1/60~1/15,000sec	
CAMMA CORRECTION	0.45	
OPERATION TEMPERATURE	-20℃~60℃	
OPERATION HUMIDITY	85%RH	
SHENZHEN ZHONGWANG ELECTRON  CO.,LTD		TEL: +86-755-8336 1499 FAX: +86-755-8336 1433
http://www.ztv.cc		

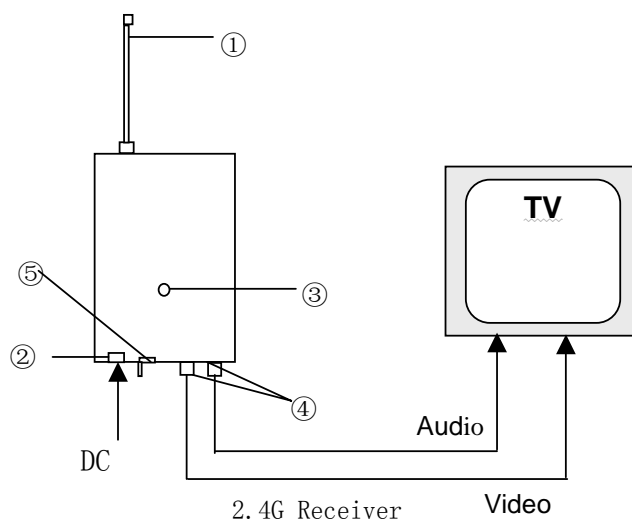
FILE NUMBER:

MODEL: ZT-815T

PAGES: 4 OF 4



- ①: Antenna
- ②: Power Jack
- ③: Flash LED
- ④: Video and Audio Jack
- ⑤: Channel Switch
- ⑥: Camera Power Line
- ⑦: Lens of camera



SHENZHEN ZHONGWANG ELECTRON CO.,LTD

TEL: +86-755-8336 1499  
FAX: +86-755-8336 1433

<http://www.ztv.cc>