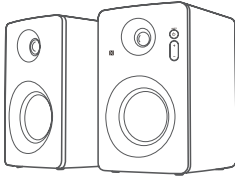


Contents

What's in the Box	2
Important Safety Instructions	2
Safety	2
Identifying the Parts	4
Main Unit.....	4
Connections	5
Connect external audio devices	5
Connect to Speakers.....	5
Connect Power.....	5
USB Charge.....	6
General Operation	6
Standby/ON	6
Select Modes	6
Adjust the Volume.....	6
Adjust the BASS / TREBLE.....	6
Play for External Audio Devices	6
USB Operation	7
Bluetooth Operation	7
NFC (Near Field Communication) Operation	7
Troubleshooting	8
SPECIFICATIONS	8

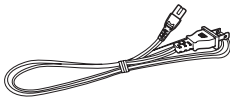
What's in the Box



Main Unit (Left / Right)



Instruction Manual



AC Power Cord



RCA to 3.5mm Audio Cable

- Design and specifications are subject to change without notice.

Important Safety Instructions

	CAUTION RISK OF ELECTRIC SHOCK DO NOT OPEN	
	AVIS RISQUE DE CHOC ELECTRIQUE NE PAS PUVRIR	



The lightning flash with arrowhead symbol, within an equilateral triangle, is intended to alert the user to the presence of uninsulated "dangerous voltage" within the product's enclosure that may be of sufficient magnitude as to constitute a risk of electric shock to persons.




The exclamation point within an equilateral triangle is intended to alert the user to the presence of important operating and maintenance (servicing) instructions in the literature accompanying the appliance.

Safety

- 1 **Read these instructions** - All the safety and operating instructions should be read before this product is operated.
- 2 **Keep these instructions**-The safety and operating instructions should be retained for future reference.
- 3 **Heed all warnings** - All warnings on the appliance and in the operating instructions should be adhered to.
- 4 **Follow all instructions** - All operating and use instructions should be followed.
- 5 **Do not use this apparatus near water** - The appliance should not be used near water or moisture - for example, in a wet basement or near a swimming pool and the like.
- 6 Clean only with a dry cloth.
- 7 Do not block any ventilation openings. Install in accordance with the manufacturer's instructions.
- 8 Do not install near any heat sources such as radiators, heaters, stoves, or other apparatus (including amplifiers) that produce heat.
- 9 Do not defeat the safety purpose of the polarized or grounding-type plug. A polarized plug has two blades with one wider than the other. A grounding type plug has two blades

and a third grounding prong. The wide blade or the third prong is provided for your safety. If the provided plug does not fit into your outlet, consult an electrician for replacement of the obsolete outlet.

- 10 Protect the power cord from being walked on or pinched, particularly at plugs, convenience receptacles and at the point where they exit from the apparatus.
- 11 Only use attachments/accessories specified by the manufacturer.
- 12 Use only with the cart, stand, tripod, bracket, or table specified by the manufacturer, or sold with the apparatus. When a cart or rack is used, use caution when moving the cart/apparatus combination to avoid injury from tip-over.
- 13 Unplug the apparatus during lightning storms or when unused for long periods of time.
- 14 Refer all servicing to qualified personnel. Servicing is required when the apparatus has been damaged in any way, such as power supply cord or plug is damaged, liquid has been spilled or objects have fallen into the apparatus, the unit has been exposed to rain or moisture, does not operate normally, or has been dropped.
- 15  This equipment is a Class II or double insulated electrical appliance. It has been designed in such a way that it does not require a safety connection to electrical earth.
- 16 The apparatus shall not be exposed to dripping or splashing. No objects filled with liquids, such as vases, shall be placed on the apparatus.
- 17 Minimum distance around the apparatus for sufficient ventilation is 5cm.
- 18 The ventilation should not be impeded by covering the ventilation openings with items, such as newspapers, table-cloths, curtains, etc...
- 19 No naked flame sources, such as lighted candles, should be placed on the apparatus.

Caution:

- Use of controls or adjustments or performance of procedures other than those described herein, may result in hazardous radiation exposure or other unsafe operation.
- To reduce the risk of fire or electric shock, do not expose this apparatus to rain or moisture. The apparatus must not be exposed to dripping or splashing and objects filled with liquids, such as vases, must not be placed on apparatus.

- The mains plug/appliance coupler is used as the disconnect device, the disconnect device must remain readily operable.
- Danger of explosion if battery is incorrectly replaced.
- Replace only with the same or equivalent type.

Warning

- The battery (batteries or battery pack) shall not be exposed to excessive heat such as sunshine, fire or the like.
- Before operating this system, check the voltage of this system to see if it is identical to the voltage of your local power supply.
- Do not place this unit close to strong magnetic fields.
- Do not place this unit on the amplifier or receiver.
- Do not place this unit close to damp areas as the moisture will affect the life of the laser head.
- If any solid object or liquid falls into the system, unplug the system and have it checked by qualified personnel before operating it any further.
- Do not attempt to clean the unit with chemical solvents as this may damage the finish. Use a clean, dry or slightly damp cloth.
- When removing the power plug from the wall outlet, always pull directly on the plug, never yank on the cord.
- No naked flame sources, such as lighted candles, should be placed on the apparatus.
- Changes or modifications to this unit not expressly approved by the party responsible for compliance will void the user's authority to operate the equipment.
- The rating label is pasted on the bottom or back of the equipment.



DO NOT INGEST BATTERY, CHEMICAL BURN HAZARD

If you think batteries might have been swallowed or placed inside any part of the body, seek immediate medical attention. Keep new and used batteries away from children. If the battery compartment does not close securely, stop using the product and keep it away from children. The remote control supplied with this product contains a coin/button cell battery. If the coin/button cell battery is swallowed, it can cause severe internal burns in just 2 hours and lead to death.

FCC INFORMATION (for US customers)

Warning:

- This equipment should be installed and operated with minimum distance 20cm between the radiator & your body.
- Changes or modifications to this unit not expressly approved by the party responsible for compliance could void the user's authority to operate the equipment. "

NOTE: This equipment has been tested and found to comply with the limits for a Class B digital device, pursuant to Part 15 of the FCC Rules. These limits are designed to provide reasonable protection against harmful interference in a residential installation. This equipment generates, uses and can radiate radio frequency energy and, if not installed and used in accordance with the instructions, may cause harmful interference to radio communications.

However, there is no guarantee that interference will not occur in a particular installation. If this equipment does cause harmful interference to radio or television reception, which can be determined by turning the equipment off and on, the user is encouraged to try to correct the interference by one or more of the following measures:

- Reorient or relocate the receiving antenna.
- Increase the separation between the equipment and receiver.
- Connect the equipment into an outlet on a circuit different from that to which the receiver is connected.
- Consult the dealer or an experienced radio / TV technician for help.

This device complies with Part 15 of the FCC Rules. Operation is subject to the following two conditions:

- (1) this device may not cause harmful interference, and
- (2) this device must accept any interference received, including interference that may cause undesired operation.

Identifying the Parts

Main Unit

❶ Passive speaker/Active speaker:

Do not block or cover the speakers.
To avoid damaging the speaker units,
please don't touch them directly.

❷ NFC Sensor

❸ +/- (Volume Up/Down buttons) :

Press the "+" button to increase the
volume; press the "-" button to decrease
the volume.

❹ ⏻ /SOURCE (Power / Source button /LED Indicators):

Switch the unit between ON and Standby
modes.

Press this button to select a play
function. The selected mode will show on
the display.

- LCD Indicator

- Red Light : In Standby mode
- Green Light : In AUX mode
- Blue Light : In Bluetooth mode
- Orange Light : In OPTICAL mode
- White Light : In COAXIAL mode
- Purple Light : In USB mode

❺ BASS knob: Adjust bass level.

❻ TREBLE knob: Adjust treble level.

❼ USB (PLAY) Socket: Insert the USB device or the iOS device to play music.

❽ USB (Charging) Socket: The USB socket is for charge smartphones, tablets or similar devices.

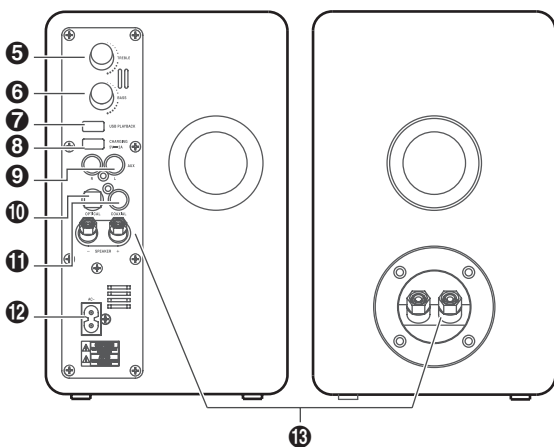
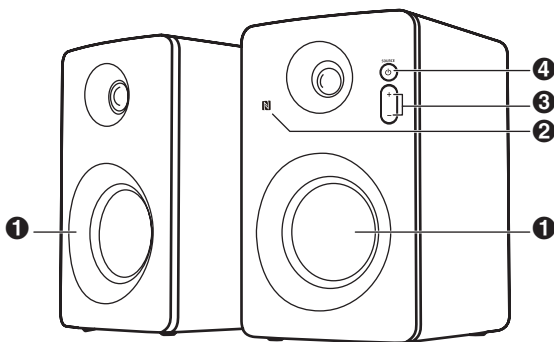
❾ AUX(R/L) Socket (analog) : Use the included stereo 3.5mm to stereo RCA audio cable (included) to connect the stereo analog outputs of your TV, disc player or cable/satellite tuner here.

❿ OPTICAL Socket (digital): If your TV, disc player or cable/satellite tuner has an optical digital output, use the optical cable (not included) to connect it here.

⓫ COAXIAL Socket (digital): If your TV, disc player or cable/satellite tuner has an COAXIAL digital output, use the included coaxial cable to connect it here.

⓬ AC~ Socket: Connect to power cord.

⓭ Speakers Connector : Use the speaker cable (included) to connect the speaker (+ / -) port on the passive speaker and active speaker.

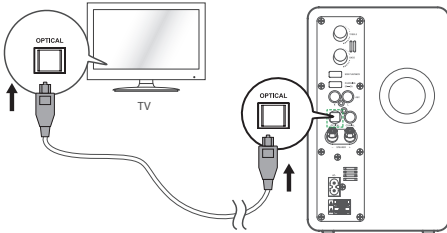


Connections

Connect external audio devices

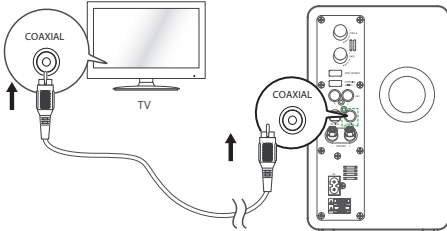
OPTICAL Socket

Connect an OPTICAL cable (not included) to the TV's OPTICAL OUT socket and the **OPTICAL** socket on the unit.



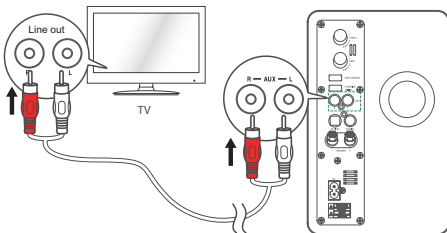
COAXIAL Socket

You also can use the COAXIAL (included) cable to connect the TV's COAXIAL OUT socket and **COAXIAL** socket on the unit.

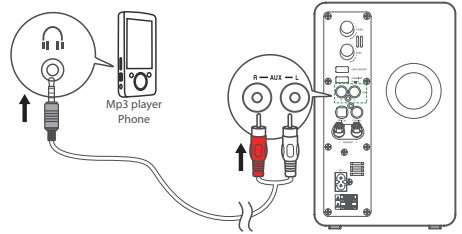


AUX Socket

Use a RCA to RCA audio cable (not included) to connect the TV's audio output sockets to the AUX (R L) socket on the unit.



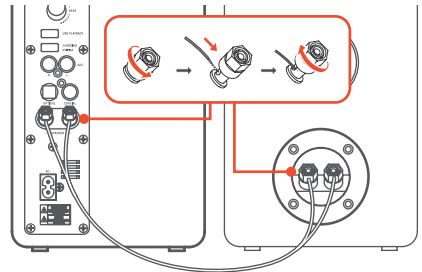
Use a RCA to 3.5mm audio cable (included) to connect the audio player's headphone socket to the AUX (R L) socket on the unit.



Connect to Speakers

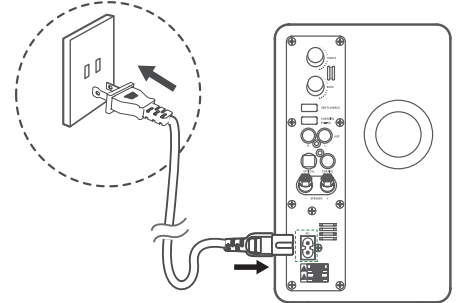
Note:

- For optimal sound, use the supplied speakers only.
- Connect only speakers with impedance that is the same or higher than the supplied speakers.
- Refer to the Specifications section of this manual.
- Connect the speaker cords between the terminals as shown below.



Connect Power

Risk of product damage! Ensure that the power supply voltage corresponds to the voltage printed on the back or the underside of the unit.

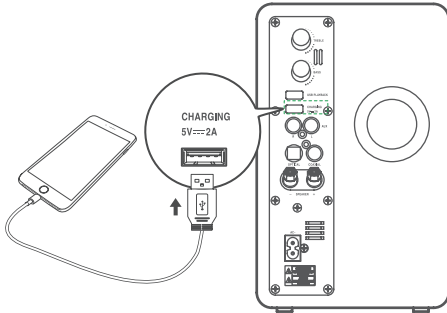


- Connect the power to the AC- socket on the unit and a wall outlet.

NOTE: Be sure to unplug the power cord from the outlet when the system is not in use for an extended period of time.

USB Charge

Connect a USB cable (not included) to USB Charging 5V \equiv 2A socket to charge your smartphone or tablet PC.



General Operation

Standby/ON

When you first connect the main unit to the mains socket, the main unit will be in Standby mode.

- Press the **⏻ /SOURCE** button on the unit to switch the unit ON.
- Press and hold the **⏻ /SOURCE** button again on the unit to switch the unit back to STANDBY mode. The indicator will light up red.
- Disconnect the mains plug from the mains socket if you want to switch the unit OFF completely.

Note:

- When there is no input signal (or weak input signal) for over 15 minutes, the unit will automatically switch to Standby mode.
- When turning the system on, the system will continue in the mode it was in when it was turned off last time.

Select Modes

Press the **⏻ /SOURCE** button repeatedly on the unit to switch between **AUX, BT (BLUETOOTH), OPTICAL, COAXIAL** and **USB** modes.

Red Light	: In Standby mode
Green Light	: In AUX mode
Blue Light	: In Bluetooth mode
Orange Light	: In OPTICAL mode
White Light	: In COAXIAL mode
Purple Light	: In USB mode

Adjust the Volume

Press the **VOL +/-** buttons on the unit to adjust the volume.

- While adjusting the volume, the status indicator flashes quickly.
- While the volume level reaches its maximum level, if you press the **VOL+** button again, the status indicator flashes once. While the volume level reaches its minimum level, if you press the **VOL-** button again, the status indicator flashes once.

Adjust the BASS / TREBLE

Rotate the **BASS** knob on the unit to adjust bass level, the status indicator flashes quickly.

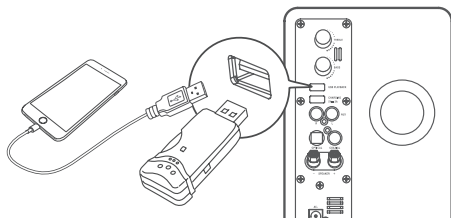
Rotate the **TREBLE** knob on the unit to adjust treble level, the status indicator flashes quickly.

Play for External Audio Devices

- 1 Ensure that the unit is connected to the TV or audio device.
 - 2 While in ON mode, press the **⏻ /SOURCE** button repeatedly on the unit to switch between **AUX, OPTICAL, COAXIAL** mode.
 - 3 Operate your audio device directly for playback features.
 - 4 Press the **VOL +/-** buttons to adjust the volume to your desired level.
- In the **OPTICAL / COAXIAL** mode, if there is no sound output and the , ensure the audio setting of the input source (e.g. TV, game console, DVD player, etc.) is set to PCM mode.

USB Operation

- 1 Insert the USB device to the **USB PLAYBACK** socket on the unit.
- **Play for the iOS device :** Use the USB cable connect to the iPod/iPhone/iPad device to **USB PLAYBACK** socket on the unit.



- 2 Press the **⏮ /SOURCE** button repeatedly on the unit to switch between **USB** mode.
- 3 The unit will play music automatically.

Bluetooth Operation

Pair Bluetooth-enabled Devices

The first time you connect your bluetooth device to this player, you need to pair your device to this player.

Note:

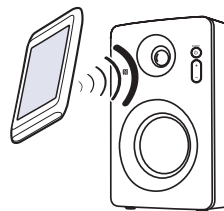
- The operational range between this player and a Bluetooth device is approximately 8 meters (without any object between the Bluetooth device and the unit).
 - Before you connect a Bluetooth device to this unit, ensure you know the device's capabilities.
 - Compatibility with all Bluetooth devices is not guaranteed.
 - Any obstacle between this unit and a Bluetooth device can reduce the operational range.
 - If the signal strength is weak, your Bluetooth receiver may disconnect, but it will reenter pairing mode automatically.
- 1 During ON mode, press the **⏮ /SOURCE** button repeatedly on the unit to select Bluetooth mode. The indicator will light up Blue. The system has entered pairing mode.

- 2 Activate your Bluetooth device and select the search mode. "**RSR MS120**" will appear on your Bluetooth device list.
- 3 Select "**RSR MS120**" in the pairing list. The indicator will light up solidly while the pairing succeeds.
- 4 Play music via your Bluetooth device.
 - To disconnect the Bluetooth function, switch to another function on the unit or disable the function from your Bluetooth device.

NFC (Near Field Communication) Operation

Pair your NFC-enabled mobile device directly with this unit by just a single tap.

1. Activate NFC on your mobile device.
2. Tap the mobile device on the "**N**" icon of the unit.
3. Operate your mobile device directly for playback features.
4. To disconnect, tap the mobile device on the "**N**" icon of the unit to disconnect or disable NFC from your mobile device.



Note: This NFC function only works with mobile devices that support NFC technology.

Tips:

- Enter "0000" for the password if necessary.
- If no other Bluetooth device pairs with this player within two minutes, the player will recover its previous connection.
- The player will also be disconnected when your device is moved beyond the operational range.
- If you want to reconnect your device to this player, place it within the operational range.
- If the device is moved beyond the operational range, when it is brought back, please check if the device is still connected to the player.
- If the connection is lost, follow the instructions above to pair your device to the player again.

Troubleshooting

To keep the warranty valid, never try to repair the system yourself. If you encounter problems when using this unit, check the following points before requesting service.

No power

- Ensure that the AC cord of the apparatus is properly connected .
- Ensure that there is power at the AC outlet.
- Press standby button to turn the unit on.

No response from the unit

- Disconnect and reconnect the AC power plug, then turn the unit on again.

I can't find the Bluetooth name of this unit on my Bluetooth device for Bluetooth pairing

- Ensure the Bluetooth function is activated on your Bluetooth device.
- Ensure you have paired the unit with your Bluetooth device.

SPECIFICATIONS

The power consumption of the product in networked standby if all wired network ports are connected and all wireless network ports are activated - The power consumption in wireless network port is activated: 1.7W max.

Low-frequency transducer : Two 4" Speaker

High-frequency transducer : Each channel configuration a 1.25 "speaker

Amplifier power : 30 W x 2

Frequency response : 50Hz – 20kHz

Power requirement : 120V~ , 60Hz

Power consumption : 35W

Power consumption (standby) : <1W

Dimensions (H x W x D): 152 x 243 x 215 mm

Weight (unit) : 4.45 Kg