

**BTC021L**  
**Bluetooth car kit**  
**User's manual**

**Content**

- Brief introduction.....1
- 1. Bluetooth wireless communication technology.....1
- 2. About BTC021L.....1
- Before use.....2
- 1. Overview.....2
- 2. Setting up hands-free kit.....3
- Getting started.....4
- 1. Turning on/off BTC021L.....4
- 2. Pairing BTC021L with Bluetooth cell phone.....4
  - 1) Pairing with one Bluetooth cell phone.....4
  - 2) Pairing with two Bluetooth cell phones.....5
- 3. Music playback.....6
- 4. Making a call with BTC021L.....6
- 5. Re-connecting with a Bluetooth device.....8
- 6. Factory reset.....8
- 7. USB charging.....9
- 8. LED Indicator.....9
- Care and maintenance.....10
- FAQs.....10
- Specifications.....11
- FCC Statements.....11

Welcome to use this Bluetooth car kit, BTC021L. Please read this user's manual carefully before use.

■ **Brief introduction**

**1. Bluetooth wireless communication technology**

Bluetooth is a standard of close range wireless technology that was drawn up by Ericsson, IBM, Intel, Nokia and Toshiba. With Bluetooth technology, we can achieve the highest transmission rate among mobile phones, computers, printers, PDAs and other devices. The max transmission range of class II is 10 meters while the max transmission ranges of class I can reach up to 100 meters.

**2. About BTC021L**

BTC021L is a Bluetooth car kit. It supports the following Bluetooth profiles: HFP, HSP, A2DP and AVRCP.

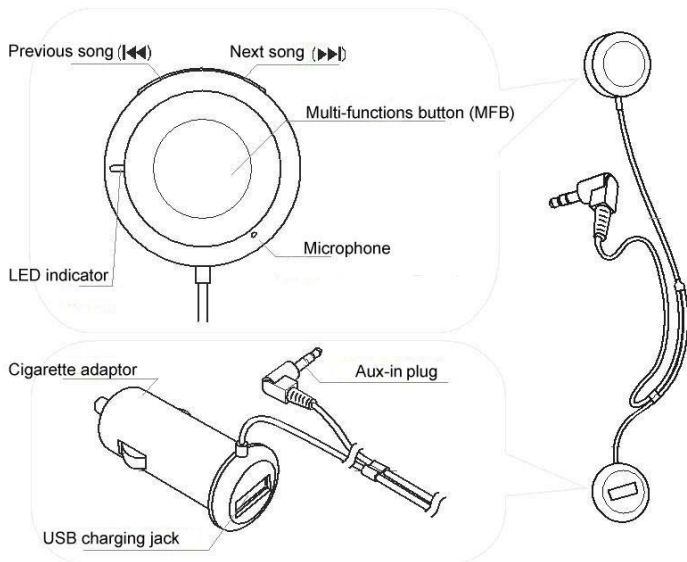
Connect BTC021L to AUX in jack of car audio system, now you can make a call or play music. The hands-free car kit has the following features:

- ◆ Answer a call, end a call and reject a call
- ◆ Redial last number
- ◆ Voice dial (This function needs to be supported by your cell phone)
- ◆ Call transfer between BTC021L and your cell phone
- ◆ Microphone mute
- ◆ Music pause/play, previous/next song
- ◆ Multi-point connect with two Bluetooth devices

**Remark:** Even though the paired device and the hands-free car kit support the same Bluetooth profiles, functions may vary due to specification differences of the paired devices.

■ **Before use**

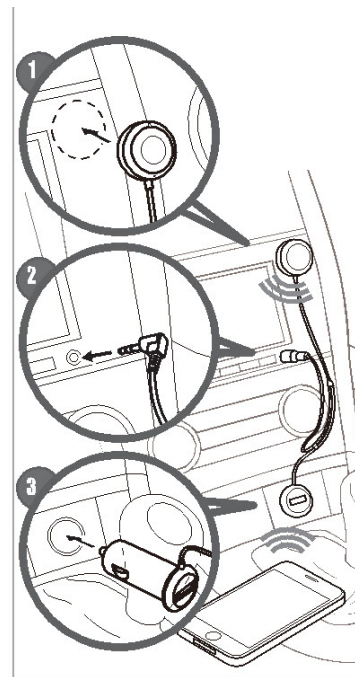
**1. Overview**



**2. Setting up hands-free kit**

Please refer to the following steps to set up BTC021L before use:

- ◆ Set up the Velcro on the best position in the car, and then stick the main body onto Velcro
- ◆ Plug the Aux-in plug into car Aux-in jack
- ◆ Plug the cigarette adaptor into the car



## ■ Getting started

### 1. Turning on/off BTC021L

Function	Operation	LED indicator
Power on	Plug cigarette adaptor into car cigarette lighter	Blue LED light on 1 second
Power off	Pull cigarette adaptor out of car cigarette lighter or turn off cigarette lighter	Indicator light off
Enter pairing mode	In standby mode, not connect with device, press and hold <b>MFB</b> button for 4~5 seconds	Red and blue LEDs flash alternately

#### Remark:

Pairing mode will last 2 minutes. If no devices can be connected within 2 minutes, BTC021L will return to standby mode. If you want to repair, please turn off BTC021L first and then enter pairing mode.

### 2. Pairing BTC021L with Bluetooth cell phone

#### 1) Pairing with one Bluetooth cell phone

Please make sure your cell phone is Bluetooth-enabled. Specific pairing steps may vary with different models of cell phones. Please refer to your cell phone's user's manual for further information.

The general pairing steps are as follows:

- 1) Keep BTC021L and Bluetooth cell phone within 1 meter when pairing;
- 2) Make BTC021L enter pairing mode (please refer to "Turning on/off BTC021L");
- 3) Activate your cell phone's Bluetooth function and set your cell phone to search for Bluetooth device within range, and select "BTC021L" from the list of devices shown;

4

### 3. Music playback

- 1) Adjust the car radio to AUX in
- 2) Make sure BTC021L has already connect with cell phone, then you can listen music from phone to car radio
- 3) Music remote control:  
**Pause/play:** short press MFB once, music pause; short press MFB once again, music play  
**Previous song:** short press **⏮** once  
**Next song:** short press **⏭** once
- 4) When it connect with two cell phones, you should pause current music from phone 1 to play phone 2 music.

### 4. Making a call with BTC021L

#### 1) Basic operation

Function	Status of BTC021L	Operation	Prompt tone
Cancel a call	Calling	Short press MFB button once	One short tone
Answer a call	Incoming ring	Short press MFB button once	Two raise tone
Reject a call	Incoming ring	Long press <b>MFB</b> button for about 2 seconds	Two fall tone
End a call	During a call	Short press <b>MFB</b> button once	One short tone
Microphone mute	During a call	Short press <b>MFB</b> button twice	Two fall tone
Cancel mute	During a call (Microphone mute)	Short press <b>MFB</b> button twice	Two raise tone
Call transfer (BTC021L to cell phone)	During a call	Long press <b>MFB</b> button for two seconds	One short tone

6

- 4) According to the indication, enter password or PIN No.: "0000";( If the mobile phone supports Bluetooth V2.1, password is not required.)
- 5) If prompted by your cell phone to connect, select "Yes" (This will vary among cell phone models);
- 6) After successful connecting, blue LED of BTC021L will flash twice every 4 seconds.

#### Remarks:

- ◆ If pairing is failed, please turn off BTC021L first and then try re-pairing according to the step 1-6 mentioned above.
- ◆ After successful pairing, BTC021L and the Bluetooth cell phone will remember each other, BTC021L will not need to re-pair with the Bluetooth cell phone next time unless the pairing information is deleted because of a new pairing.
- ◆ Every time BTC021L is turned on, it will connect to last connected devices automatically. If you want to pair it with other devices, please turn off the Bluetooth function of current Bluetooth device and then pair BTC021L with a new device according to steps 1~6 mentioned above.

### 2) Pairing with two Bluetooth cell phones

This product can connect with two Bluetooth cell phones at the same time.

The general pairing steps are as follows:

- 1) Pair and connect BTC021L with phone 1 (please refer to "Pairing with one Bluetooth cell phone");
- 2) Long press MFB button or turn on BTC021L again to enter into pairing mode, pair and connect BTC021L with phone 2 (please refer to "Pairing with one Bluetooth cell phone");
- 3) Operate phone 1 to connect with BTC021, or turn on BTC021L again, then it will connect with two cell phones automatically.

#### Remark:

- ◆ After connecting with two cell phones successfully, it can remember each other.
- ◆ After turn on, it will connect with last connected two devices automatically.

5

Call transfer (cell phone to BTC021L)	During a call	Long press <b>MFB</b> button for about two seconds	One short tone
Redial last number	Standby mode, connected to a device	Short press <b>MFB</b> button twice	One short tone
Voice dial	Standby mode, connected to a device	Long press <b>MFB</b> button for about 2 seconds	One short tone

### 2) Three-ways call

Functions	Status of headset	Operation
Answer new call and end current call	During a call, there is seconds incoming call	Short press MFB once
Answer new call and retain current call	During a call, there is seconds incoming call	Double click MFB
Switch call	During a call, one of call is retained	Double click MFB
End current call and back to retained call	During a call, one of call is retained	Short press MFB once

#### Remarks:

- ◆ Not all cell phones support all functions listed above. Please refer to your cell phone's user's manual for further information.
- ◆ For some phone, when pressing the answer button on some cell phones, the call will be transferred to the cell phone. You have to transfer the call to BTC021L manually then. Please refer to your cell phone's user's manual for further information.
- ◆ After microphone mute, BTC021L will have two "dudu" tones every 10 seconds.

7

### 3) Making a call with two cell phones

Functions	Status of headset	Operation
Retain phone call #1 and answer phone call #2	During phone call #1, phone 2 has incoming call	Double click MFB button
End phone call #1 and answer phone call #2	During phone call #1, phone 2 has incoming call	Short press MFB button once
Switch call	During call, one of phone call is retained	Double click MFB button
End current phone call, back to retain phone call	During call, one of phone call is retained	Short press MFB button once

### 5. Re-connecting with a Bluetooth device

#### 1) Automatic connecting

Every time BTC021L is turned on, it will connect to the last connected device automatically.

#### 2) Manual connecting

When BTC021L disconnect from the Bluetooth device, short press MFB button once, it will connect to the last connected device again.

#### Remarks:

- ◆ BTC021L only tries to connect to the last connected device.
- ◆ Please activate Bluetooth on your Bluetooth device before trying to connect.
- ◆ On some Bluetooth devices, take some Nokia cell phones for example, you need to set up "allow automatic connecting" on the phone.

### 6. Factory reset

Under the status of turn on, press ◀▶ and ▶▶ button for 6 seconds simultaneously, and release it until hear two "dudu" tones and see red and blue LED on simultaneously.

#### Remarks:

- ◆ After factory reset, all the paired list will be deleted. When you turn on BTC021L, it will enter pairing mode automatically, and you need to pair with Bluetooth device again.

8

### ■ Care and maintenance

Read the following recommendations before using BTC021L. Following these you will be able to enjoy our product for many years.

- ◆ Keep the product dry and don't put it in the damp place to avoid the product's internal circuit being affected.
- ◆ Keep the product away from direct sunlight or hot places. High temperature will shorten the life of electronic devices, destroy the battery or distort certain plastic parts.
- ◆ Don't expose the product to cold areas as it may damage the internal circuit board.
- ◆ Don't try to disassemble the product as it may get damaged if you are not professional.
- ◆ Don't let the product fall down onto the floor or other hard surfaces. The internal circuit might get damaged.
- ◆ Don't use intensive chemical products or detergent to clean the product.
- ◆ Don't scratch the surface with sharp things.

In case the product doesn't function properly, send it to the store you bought it. The staff will help you to solve the problem.

### ■ FAQs

#### 1. How to do if there is no sound when making a call with BTC021L?

- Ensure BTC021L connects well with Bluetooth cell phone;
- Ensure the volume has already been properly adjusted;
- Make sure the audio input of car audio system is adjusted to AUX.

#### 2. How to do if my cell phone can not search and find BTC021L?

If BTC021L is not in pairing mode, your cell phone can't find it. Please make sure BTC021L is in pairing mode and in the effective working range.

#### 3. How to do if you can not hear clearly?

- Ensure your cell phone is in strong-signal areas;
- Ensure BTC021L is in the effective working range.

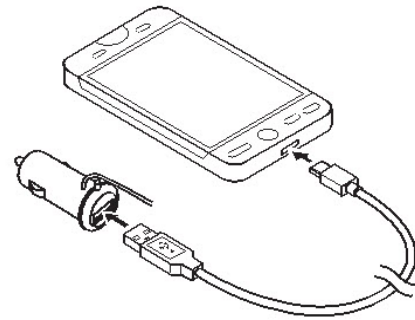
10

### 7. USB charging

This product has USB charging jack (DC5V). You can charge for other devices, such as cell phone, MP3 and so on.

#### Remarks:

- ◆ Please make sure the charging voltage of device is DC5V.
- ◆ Please use the original charging cable of the device for charging.



### 8. LED Indicator

LED indicator	Status of BTC021L
Red and blue LED flashes alternately	Pairing mode
Blue LED flashes once every 2 seconds	Standby mode(not connected to a device)
Blue LED flashes twice every 4 seconds	Connected to a device
Blue LED flashes quickly	Calling/incoming call
Blue LED flashes once every 1 seconds	During a call

9

### 4. How far is the effective range between BTC021L and Bluetooth cell phone?

According to the Bluetooth standard, the max controllable range of Class II hands free kit is 10 meters. But it varies with different environment and paired cell phone.

### ■ Specifications

<b>Bluetooth specification</b>	Bluetooth V4.0
<b>Bluetooth profiles</b>	HSP, HFP, A2DP and AVRCP
<b>Operating distance</b>	10 meters Class II
<b>Charging input</b>	DC 12V—24V
<b>Charging output</b>	DC5V ==1A
<b>Dimensions</b>	Main Unit: 42x15x42 mm Cigarette adaptor: 24x54x24mm
<b>Weight</b>	About 35.5g

### ■ FCC Statements

Any Changes or modifications not expressly approved by the party responsible for compliance could void the user's authority to operate the equipment.

This device complies with part 15 of the FCC Rules. Operation is subject to the following two conditions: (1) This device may not cause harmful interference, and (2) this device must accept any interference received, including interference that may cause undesired operation.

Note: This equipment has been tested and found to comply with the limits for a Class B digital device, pursuant to part 15 of the FCC Rules. These limits are designed to provide reasonable protection against harmful interference in a residential installation. This equipment generates uses and can radiate radio frequency energy and, if not installed and used in accordance with the instructions, may cause harmful interference to radio communications. However, there is no guarantee that interference will not occur in a particular installation. If this equipment does cause harmful interference to radio or television reception, which can be determined by turning the equipment off and on, the user is encouraged to try to correct the interference by one or more of the following measures:

- Reorient or relocate the receiving antenna.
- Increase the separation between the equipment and receiver.

11

—Connect the equipment into an outlet on a circuit different from that to which the receiver is connected.

—Consult the dealer or an experienced radio/TV technician for help.

**FCC Radiation Exposure Statement:**

This equipment complies with FCC radiation exposure limits set forth for an uncontrolled environment. This equipment should be installed and operated with minimum distance 20cm between the radiator& your body.

This transmitter must not be co-located or operating in conjunction with any other antenna or transmitter.