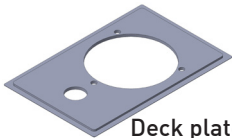


# Zip ZT013 Font adaptor kit

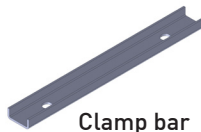
Use with stand-alone font kit 93442UK



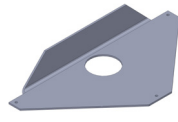
## Kit contents



Deck plate



Clamp bar



Tap steady bracket



Ø13mm fixing collar



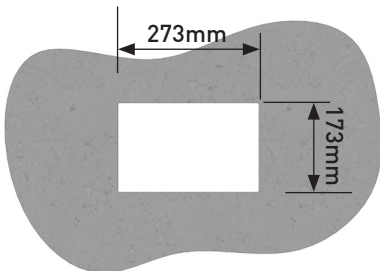
Ø40mm tap collar



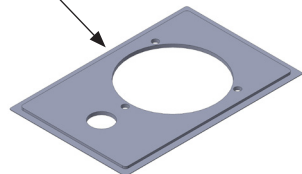
Screws 3 x 16mm  
(2mm pilot hole)

## Assembly

1. Cut the rectangular deck plate hole 273 x 173mm.

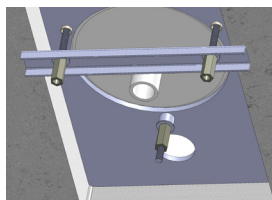
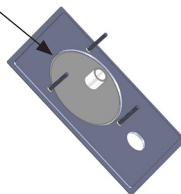
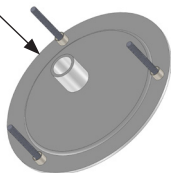


2. Apply a thin bead of silicon sealant to the deck plate flange and mount to work-top.



## Assembly (continued)

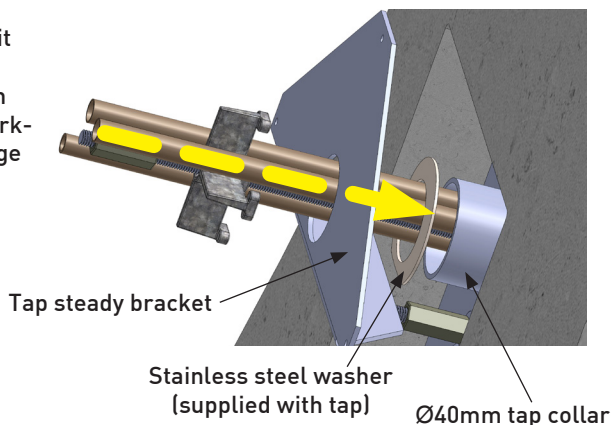
3. Open the font kit 93442UK and fit the 3 threaded rods to the bosses under the font bowl, apply silicon sealant to the bowl mating edge and fit to the deck plate.



4. From under the worktop, fit the clamp bar using washers and nuts supplied with the font kit. Then fit the small collar over the rear boss and fix with washer and nut. Check font plate is aligned correctly, then tighten the nuts, and wipe off any excess sealant.

5. Fit the tap through the deck plate, including any washer required at the tap base.

6. From under the worktop, fit the large collar and then the steady bracket. Depending on the exact thickness of the worktop you may use supplied large washers as distance pieces under the collar.



7. You may need to trim off the stainless steel washer edge (as shown) to fit snugly under the bracket. Do not over-pack this gap; the aim is to leave about 0.5 – 1mm clearance so that when the assembly is tightened, the bracket clamps the deck plate securely.

8. When the assembly is tightened, wipe off any excess sealant from the font plate edges, drill 3 pilot holes under the top and secure the bracket with the 3 screws provided.

## Contact details

Zip Water UK  
14 Bertie Ward Way  
Dereham  
Norfolk  
NR19 1TE

Telephone: 0845 6 005 005  
0345 6 005 005

Web: [www.zipwater.com/uk](http://www.zipwater.com/uk)  
email: [info@zipindustries.co.uk](mailto:info@zipindustries.co.uk)