

BW7050 User's Manual

Thank you for your purchase of our BW7050 Keyboard. For your own safety and convenience, please read this manual thoroughly before using this product. After you have read this manual, please keep it in a place for reference when necessary.

Contents in the package

These following items are included in the package. Please make sure all items are complete when open the package at first time. If there is any item missing or damaged, please contact the reseller where the product was purchased or our support center.

- BW7050 Keyboard x 1
- Manual x 1
- USB cable x 1

Attention

ZIPPY TECHNOLOGY CORPORATION and its respective distributors and resellers are not responsible for any malfunction, damage or personal injury incurs which are caused by:

Any malfunction, damage or personal injury caused by the malfunctioning or damage of the user's personal computer or misuse of this product. Any attempt to dismantle, change or modify this product in any manner.

Warning

Please do not use this product in ashy, wet, or oily environment(s). Failure to do so may shorten the life of this product and may cause bodily harm.

Please keep this product away from radio frequency interruption area(s).

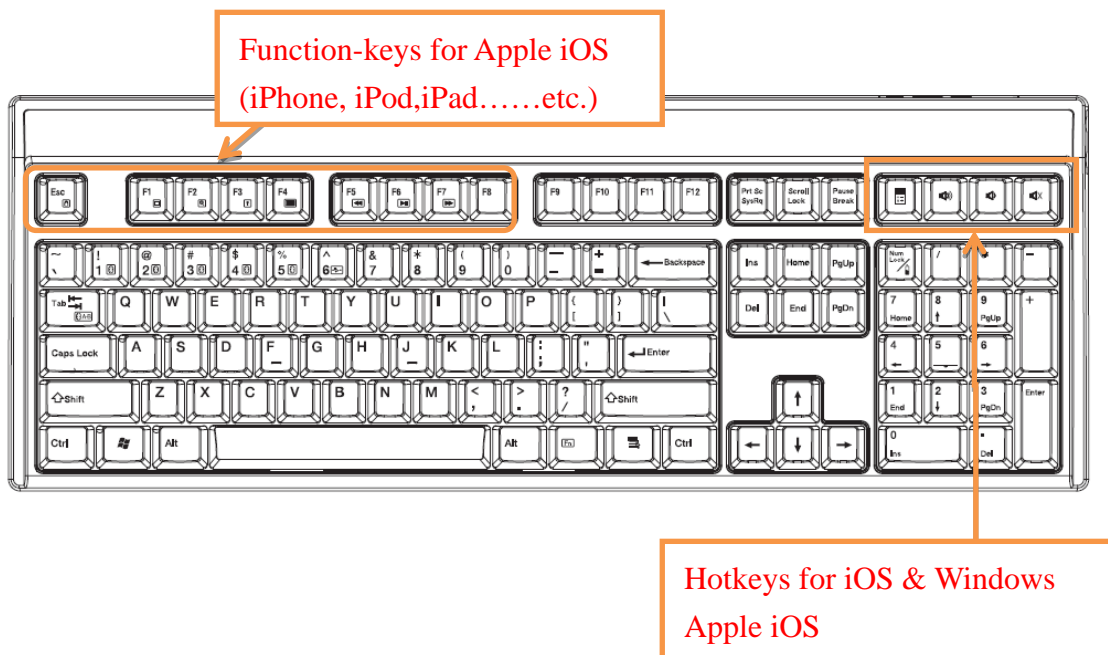
This is not an outdoor product. This product is not for outdoor use. Exposing the product outdoors may cause damage to it.

Please do not use alcohol, petroleum, benzene or thinner-based solutions to clean this product. We recommend wiping this product with a damp cloth.

Warranty Information

This product is backed by a One-Year Manufacturer's Warranty, starting from the date of purchase. The warranty covers for free repair in accordance with the contents stated herein but does not cover wear and tear and any malfunction or damages as results of improper usage as stated in this manual.

Product Appearance



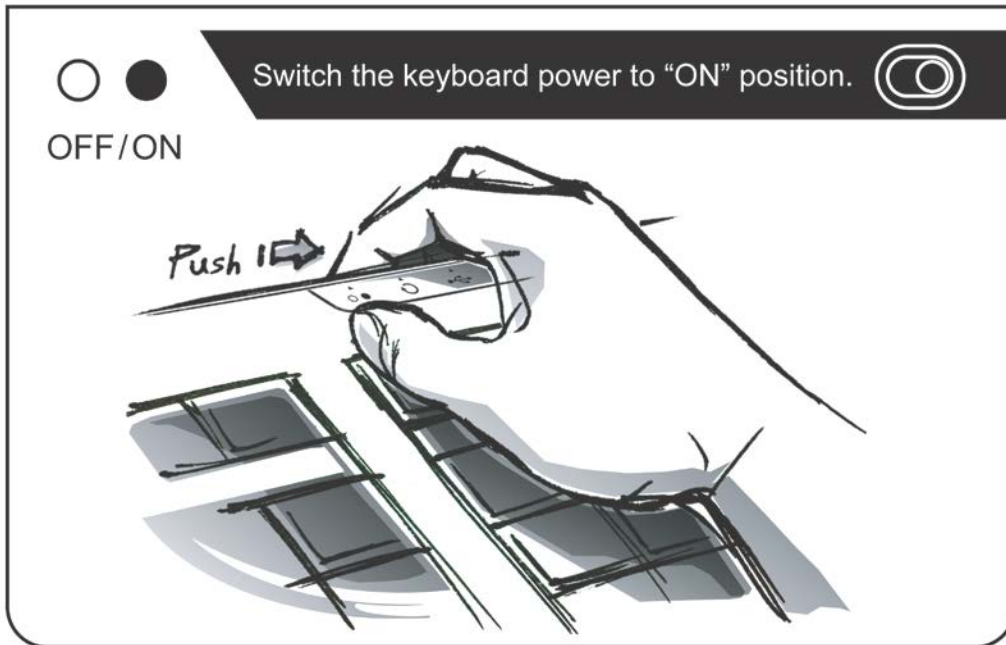
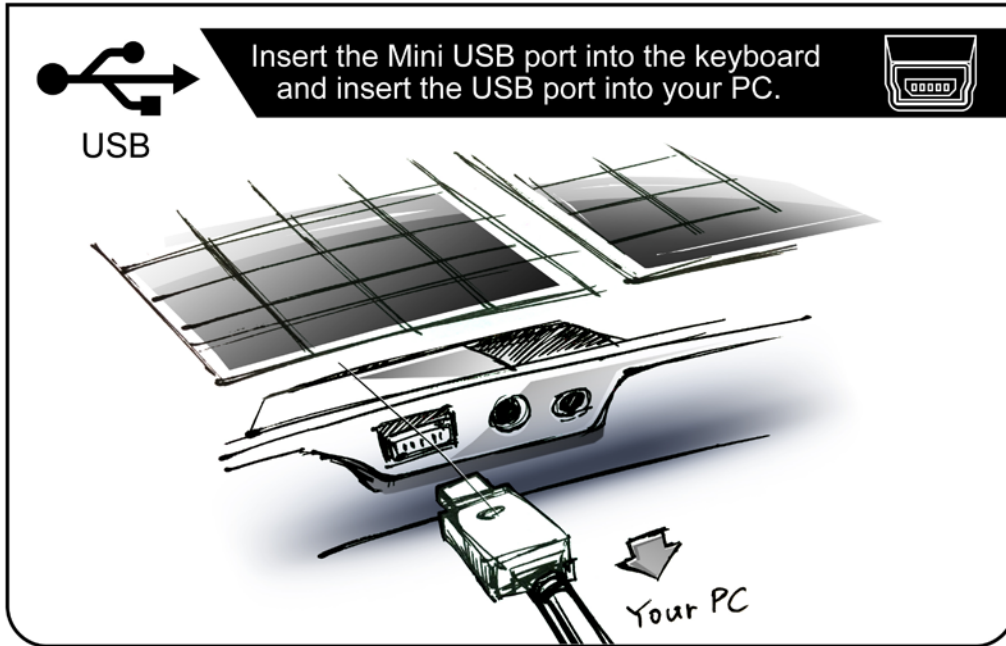
Product Features

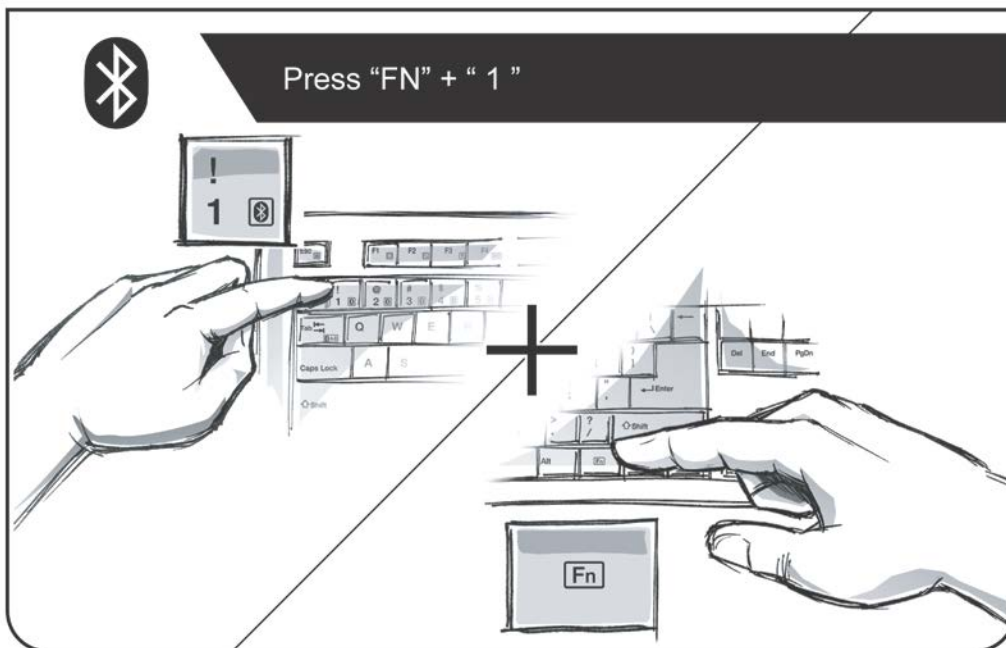
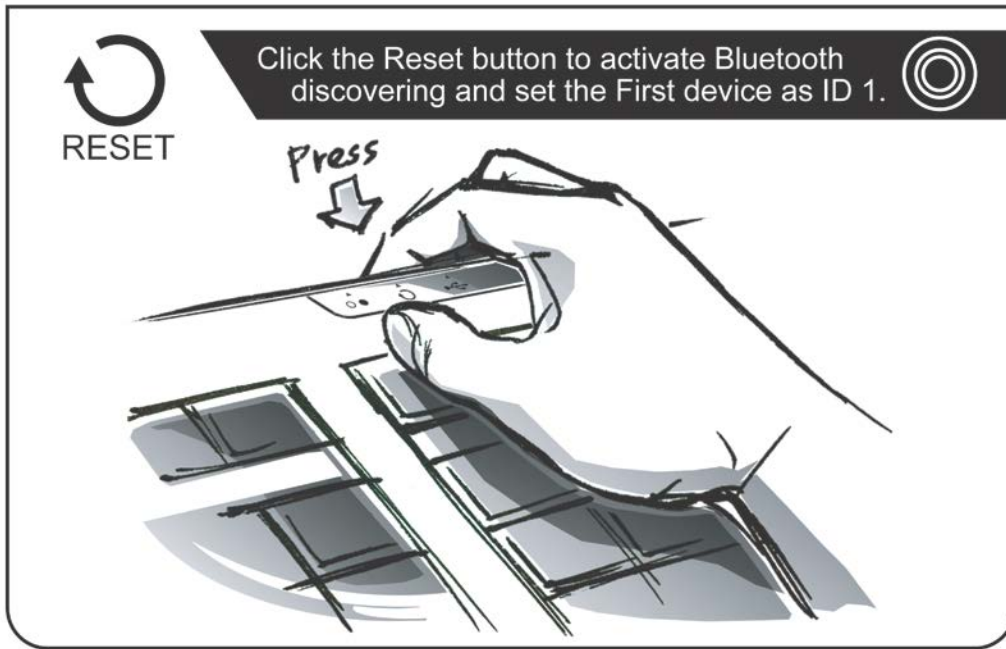
- Cherry MX series mechanical switch, more than 50million strike lifecycle.
- Classic graceful appearance with full QWERTY key layout in full-size 18.5” form factor.
- Blue illuminate back light. (only WASD& ↑ ↓ ←→)
- Graceful hidden indicator light. (Num, Scroll lock, Caps lock)
- 4 multimedia keys: calculator, Vol+, Vol-, mute.
- Separable USB cable(1.5m).
- Enhanced USB wire and Bluetooth3.0 multi-pair technology – can be switched between 1 USB wired machine and 5 Bluetooth wireless devices.
- Compatible with Apple iPod, iPad, iPhone, and google Android 3.0 system devices.
- Specific iOS (iPAD, iPhone.....etc.) function keys provide quickly access to a variety of iOS features — the Home screen, Spotlight search, display brightness, picture frame mode, the onscreen keyboard, and screen lock.

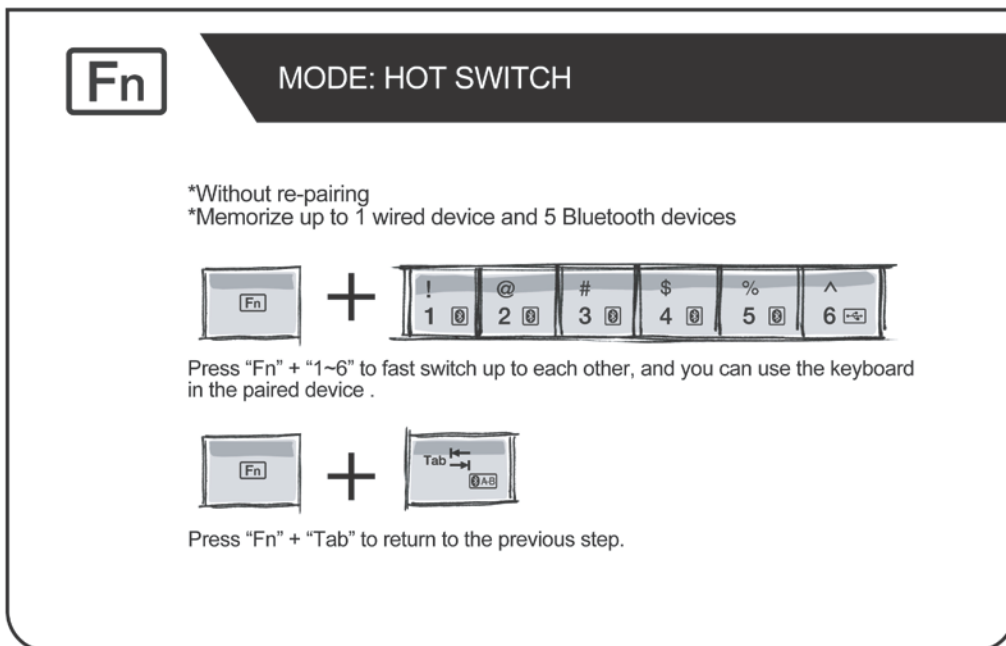
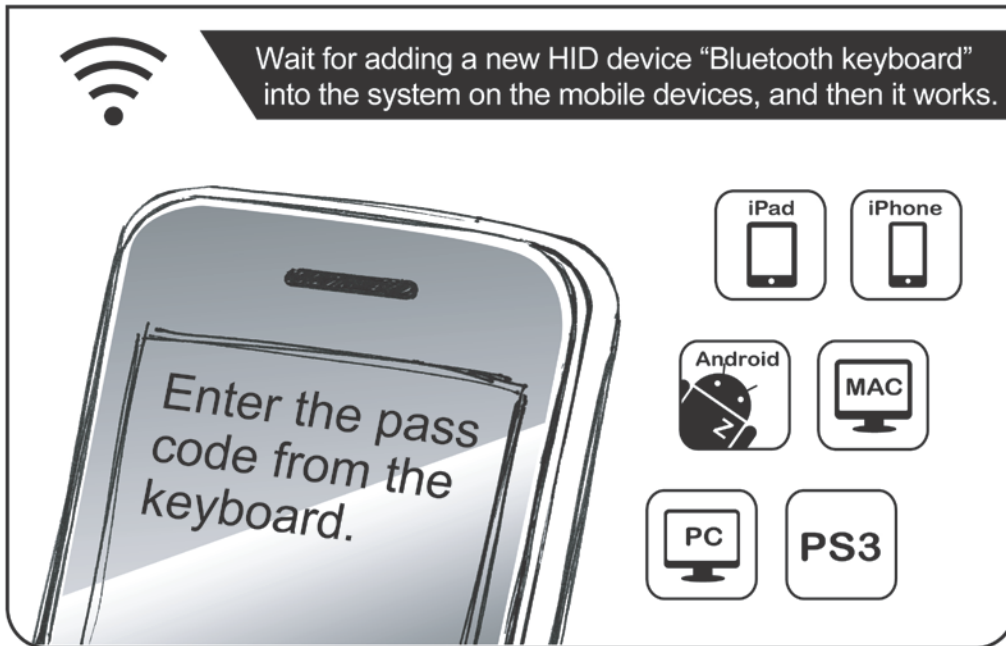
Product Specification

Hotkeys	PC & Apple iOS
Compatible	Windows XP / Vista /win7 x86 x64 / Android 3.0 later / Apple iOS /OSX
Interface	USB / Bluetooth3.0
Accessories	User Manual
Safety	CE, FCC
Dimensions	450 x165 x20mm
Weight	1200g
No. of Keys	US/UK 108 Keys (including Function Keys,Media Keys)
No. of Hotkeys	4 keys
Battery	AA 2PCS
Available Layout	World Wide
Electrical Specs	Working Voltage 5.0+/-0.5 Vdc Current Consumption 100mA max Power Consumption 0.5 Watts max
N Key Roll Over	YES





Installation















Hot Key Functions

	Switch to Bluetooth device
	Switch to USB host
	Devices Quick switch
	Screen Lock(iOS)
	Home(iOS, Windows)
	Picture Frame Mode(iOS)
	Onscreen Keyboard(iOS)
	Search(iOS)

	Last track(iOS, Windows)
	Play / Pause(iOS, Windows)
	Next track(iOS, Windows)
	Calculator(Windows)
	Picture Frame Mode(iOS, Windows)
	Onscreen Keyboard(iOS, Windows)
	Mute(iOS, Windows)
	Battery low indicator

FCC Statement on CLASS B

Deral Communication Commission interference state-ment :

This equipment has been tested and found to comply with the limits for a Class B digital device, pursuant to part 15 of the FCC rules.

These limits are designed to provide reasonable protection against harmful interference in a residential installation. This equipment generates uses and can radiate radio frequency energy and, if not installed and used in accordance with the instructions, may cause harmful interference to radio communications. However, there is no guarantee that interference will not occur in a particular installation. If this equipment does cause harmful interference to radio or television reception, which can be determined by turning the equipment off and on, the user is encouraged to try to correct the interference by one or more of the following measures:

- Reorient or relocate the receiving antenna.
- Increase the separation between the equipment and receiver.
- Connect the equipment into an outlet on a circuit different from that to which the receiver is connected.
- Consult the dealer or an experienced radio/TV technician for help.

FCC Caution

This device complies with Part 15 of the FCC Rules. Operation is subject to the following two conditions:

- (1) this device may not cause harmful interference and
- (2) this device must accept any interference received, including interference that may cause undesired operation

RF exposure warning: The equipment complies with RF exposure limits set forth for an uncontrolled environment. The antenna(s) used for this transmitter must not be co-located or operating in conjunction with any other antenna or transmitter.

You are cautioned that changes or modifications not expressly approved by the party responsible for compliance could void your authority to operate the equipment.