

BW7680 User's Manual

Thank you for your purchase of our BW7680 Keyboard. For your own safety and convenience, please read this manual thoroughly before using this product. After you have read this manual, please keep it in a place for reference when necessary.

Contents in the package

These following items are included in the package. Please make sure all items are complete when open the package at first time. If there is any item missing or damaged, please contact the reseller where the product was purchased or our support center.

- BW7680 Keyboard x 1
- Manual x 1
- USB cable x 1

Attention

ZIPPY TECHNOLOGY CORPORATION and its respective distributors and resellers are not responsible for any malfunction, damage or personal injury incurs which are caused by:

Any malfunction, damage or personal injury caused by the malfunctioning or damage of the user's personal computer or misuse of this product. Any attempt to dismantle, change or modify this product in any manner.

Warning

Please do not use this product in ashy, wet, or oily environment(s). Failure to do so may shorten the life of this product and may cause bodily harm.

Please keep this product away from radio frequency interruption area(s).

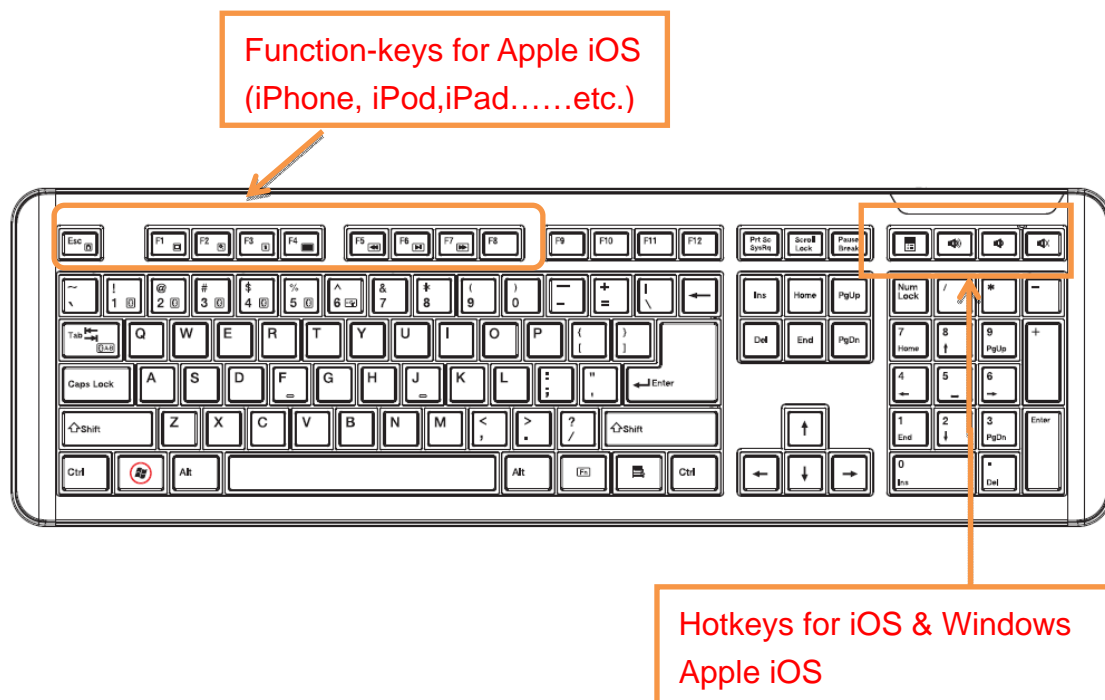
This is not an outdoor product. This product is not for outdoor use. Exposing the product outdoors may cause damage to it.

Please do not use alcohol, petroleum, benzene or thinner-based solutions to clean this product. We recommend wiping this product with a damp cloth.

Warranty Information

This product is backed by a One-Year Manufacturer's Warranty, starting from the date of purchase. The warranty covers for free repair in accordance with the contents stated herein but does not cover wear and tear and any malfunction or damages as results of improper usage as stated in this manual.

Product Appearance



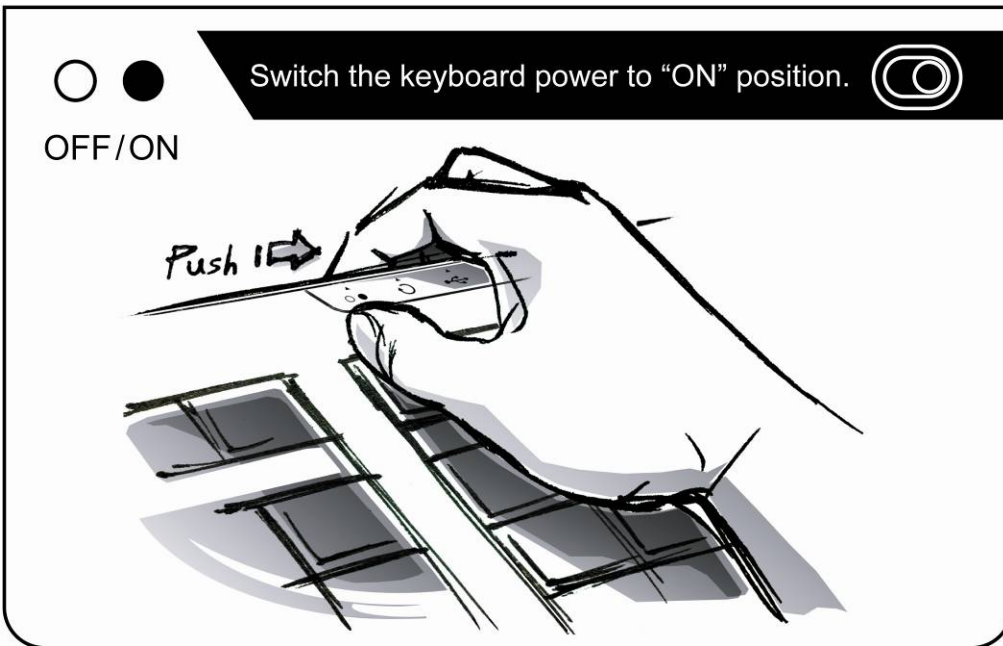
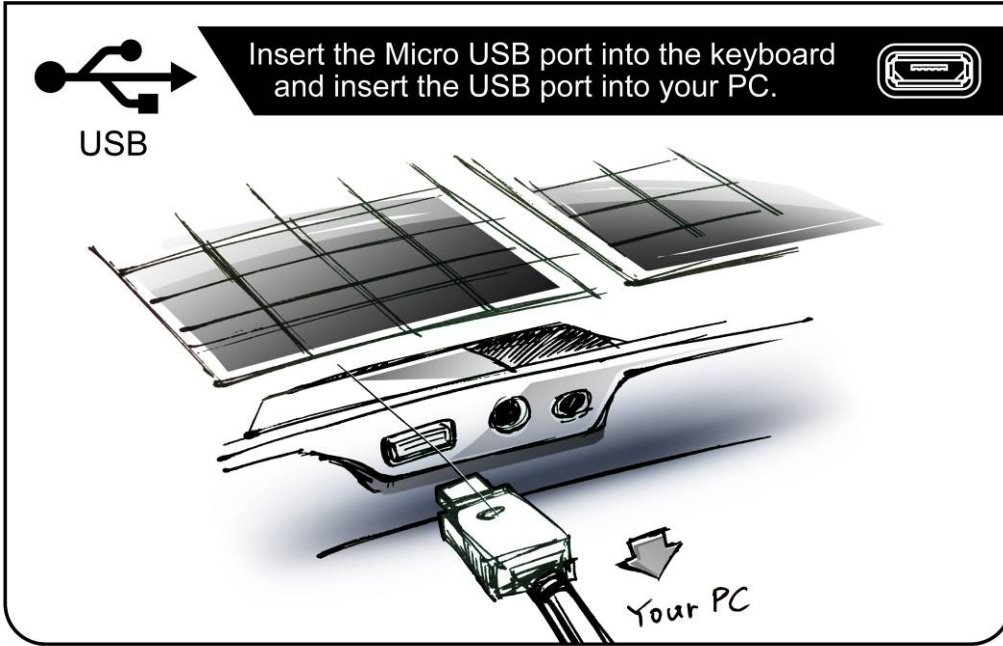
Product Features

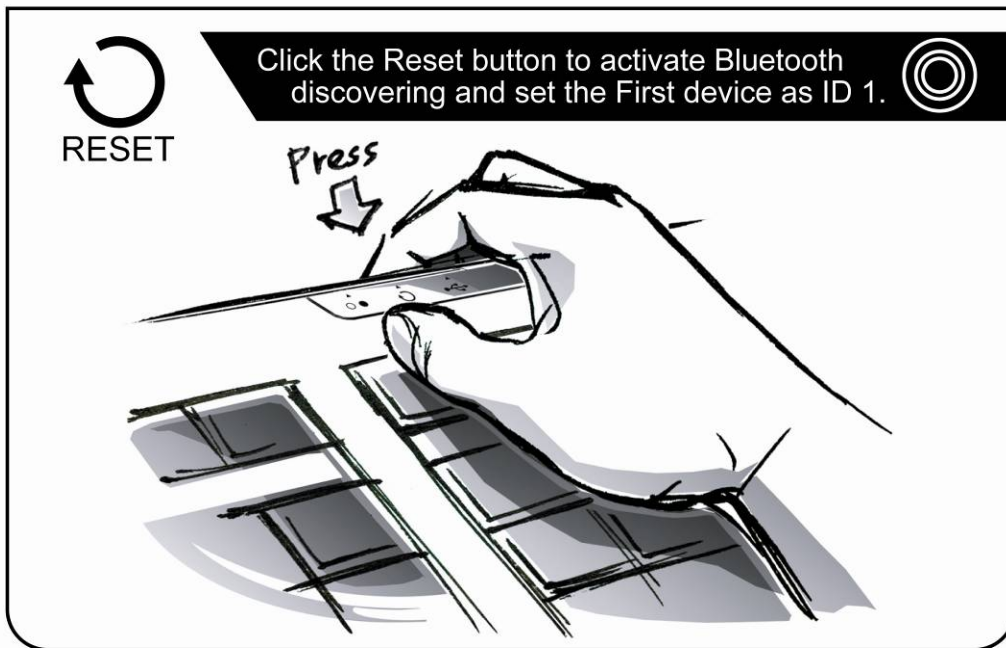
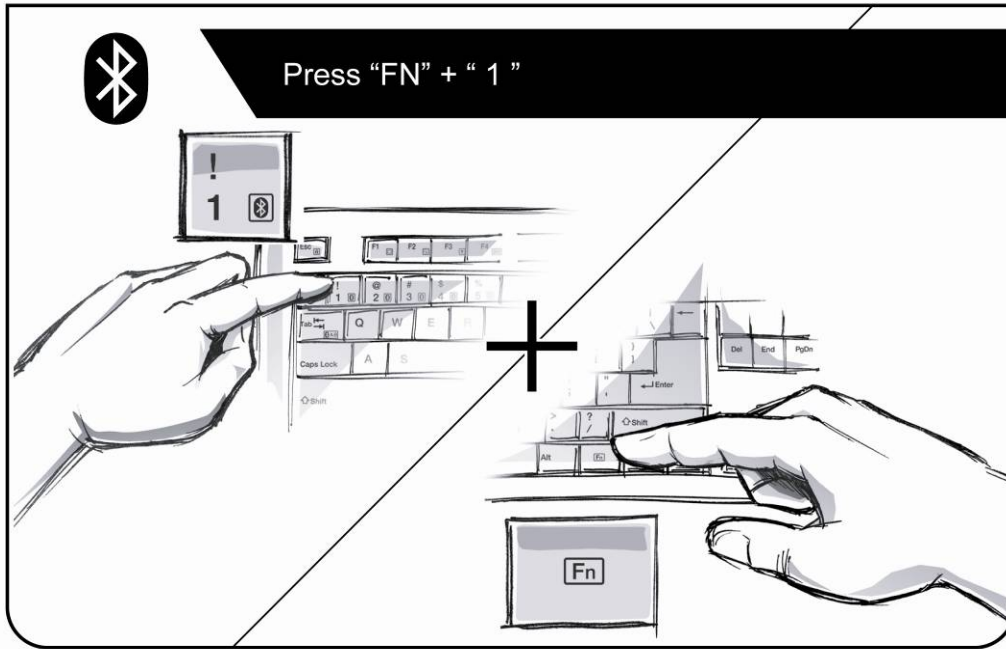
- 4 multimedia keys: calculator, Vol+, Vol-, mute.
- Separable USB cable (1.5m).
- Enhanced USB wire and Bluetooth3.0 multi-pair technology – can be switched between 1 USB wired machine and 5 Bluetooth wireless devices.
- Compatible with Apple iPod, iPad, iPhone, and Android 3.0 system devices.
- Specific iOS (iPAD, iPhone.....etc.) function keys provide quickly access to a variety of iOS features — the Home screen, Spotlight search, display brightness, picture frame mode, the onscreen keyboard, and screen lock.
- Charging rechargeable battery via USB port of PC.

Product Specification

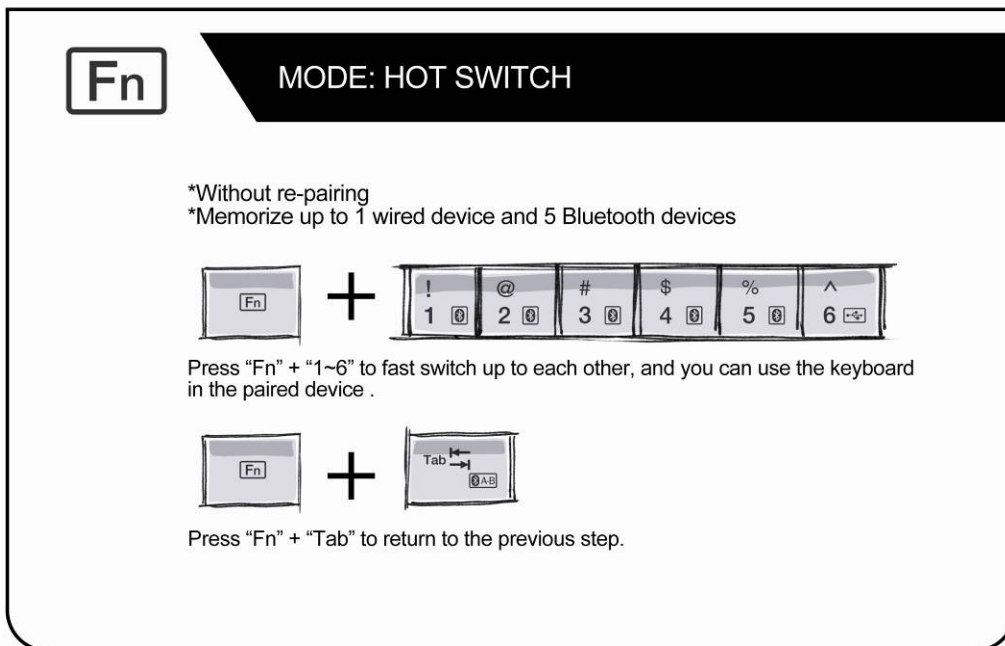
Hotkeys	PC & Apple iOS
Compatible	Windows XP / Vista /win7 x86 x64 / Android 3.0 later / Apple iOS /OSX
Interface	USB / Bluetooth3.0
Accessories	User Manual, USB cable
Safety	CE, FCC, BSMI
Dimensions	442 x145 x24.5mm
Weight	About 800g
No. of Keys	US/UK 108 Keys (including Function Keys, Media Keys)
No. of Hotkeys	4 keys
Battery	NA
Available Layout	World Wide
Electrical Specs	Working Voltage 5.0+/-0.5 Vdc Current Consumption 100mA max Power Consumption 0.5 Watts max

Installation





















Press the Reset until the LED is flashing fast.

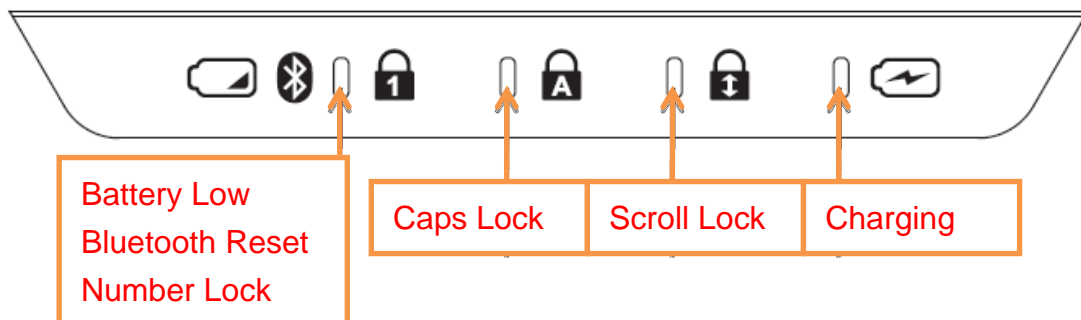


Hot Key Functions

	Switch to Bluetooth device		Last track(iOS, Windows)
	Switch to USB host		Play / Pause(iOS, Windows)
	Devices Quick switch		Next track(iOS, Windows)
	Screen Lock(iOS)		Calculator(Windows)
	Home(iOS, Windows)		Volume increase(iOS, Windows)
	Picture Frame Mode(iOS)		Volume decrease(iOS, Windows)
	Onscreen Keyboard(iOS)		Mute(iOS, Windows)
	Search(iOS)		Battery low indicator

Notification LED

If BW7680 connects to PC via USB cable, LEDs work like a USB keyboard.
 If BW7680 uses batteries, LEDs won't work beside battery low and reset.
 As BT resetting, the LED flashes fast; as battery low, the LED flashes slow.
 Charging LED flashes slow as charging and stays on when batteries are full.
 Charging LED flashes fast as using normal battery and connecting with PC.



FCC Statement on CLASS B

Federal Communication Commission interference statement:

This equipment has been tested and found to comply with the limits for a Class B digital device, pursuant to part 15 of the FCC rules.

These limits are designed to provide reasonable protection against harmful interference in a residential installation. This equipment generates uses and can radiate radio frequency energy and, if not installed and used in accordance with the instructions, may cause harmful interference to radio communications. However, there is no guarantee that interference will not occur in a particular installation. If this equipment does cause harmful interference to radio or television reception, which can be determined by turning the equipment off and on, the user is encouraged to try to correct the interference by one or more of the following measures:

- Reorient or relocate the receiving antenna.
- Increase the separation between the equipment and receiver.
- Connect the equipment into an outlet on a circuit different from that to which the receiver is connected.
- Consult the dealer or an experienced radio/TV technician for help.

FCC Caution

This device complies with Part 15 of the FCC Rules. Operation is subject to the following two conditions:

- (1) this device may not cause harmful interference and
- (2) this device must accept any interference received, including interference that may cause undesired operation

RF exposure warning: The equipment complies with RF exposure limits set forth for an uncontrolled environment. The antenna(s) used for this transmitter must not be co-located or operating in conjunction with any other antenna or transmitter.

You are cautioned that changes or modifications not expressly approved by the party responsible for compliance could void your authority to operate the equipment.