

***** USER'S MANUAL *****

FCC ID : P4PRF-525

Federal Communications Commission (FCC) Statement

This equipment has been tested and found to comply with the limits for a Class B digital device, pursuant to Part 15 of the FCC Rules. These limits are designed to provide reasonable protection against harmful interference in a residential installation. This equipment generates, uses and can radiate radio frequency energy and, if not installed and used in accordance with the instruction, may cause harmful interference to radio communications. However, there is no guarantee that interference will not occur in a particular installation. If this equipment does cause harmful interference to radio or television reception, which can be determined by turning the equipment off and on, the user is encouraged to try to correct the interference by one or more of the following measures:

- Reorient or relocate the receiving antenna.
- Increase the separation between the equipment and receiver.
- Connect the equipment into an outlet on a circuit different from that to which the receiver is connected.
- Consult the dealer or an experienced radio / TV technician for help.

Warning : A shielded-type power cord is required in order to meet FCC emission limits and also to prevent interference to the nearby radio and television reception. It is essential that only the supplied power cord be used.

Use only shielded cables to connect I/O devices to this equipment.

You are cautioned that changes or modifications not expressly approved by the party responsible for compliance could void your authority to operate the equipment.

Radio Frequency

RF-525 (USB/PS2)

(For Windows98/Me/2000)

User's Manual

U s u a l M a n u a l

Contents

Introduction	2
Contents in the package	2
Warning	2
System requirements	3
OS support	3
Parts of the keyboard	3
Directions	
To install this product	5
How to install the software	6
Channel optial	7
Signal (low voltage indicator)	10
Specifications	13

Introduction

Thank you for your patronage of purchasing Therefore keypad.
The standard key pitch of 19.0 mm plus our ergonomic design can help you staying more comfortable and more productive for longer period of operation.
Before you use this product, please read this manual thoroughly and use this product correctly.
After you read this manual, please keep it in place and refer to it when necessary.

Contents in the package

The following items are included in the package.
Please make sure all items are included as you open the package. If there is any item missing or damaged, please contact the shop you purchased this product or our support center.
* Keypad unit 1 * Receiver unit 1 * Battery 2 * This manual/warranty 1

Warning

- Any malfunction or damage caused by the malfunction or damage of the personal computer or misuse of this product will not be considered an object of guaranty.
- If this product is dismantled, changed or modified, it will no longer be considered a genuine product, and is not eligible for guaranty.

Warning

- Please do not use this product in a dry, wet, or oily place.
- Please do not impact the unit or put the cord with force.
- Outdoor use may damage the functions of this product. Indoor use is recommended.
- In case of maintenance of this product, please do not use thinner or benzene.

To Maximum performance, please keep Transmitter-Receiver away from metallic plate.

Shop of purchase		Name of shop/ address/		Tel/	
If there is no entry in these columns, please contact the shop you purchased the product immediately. This manual will not be returned. Please keep in safe place.					
Model number		Radio Frequency		RF-525	
Manufacture number		Date of purchase		month day year	
Guaranty period		1 & months		Tel/	
Customer's		Address/		Name/	
Postal code/		Tel/		Name/	

This manual is to promise free repair in accordance with the contents stated herein.
If there is any malfunction or damage under normal usage in accordance with the directions stated in the manual or the labels during the guaranty period, please contact us or the shop where you purchased the product and present the product as well as this manual.

WARRANTY

System requirements

- English operating systems
Windows 98
Windows Millennium edition
Windows 2000
- Computer system unit
Pentium processor.
- Hard disk
At least 10 MB available space is necessary for install of the software.
- CD-ROM drive
Required for install of the software.
- Standard sound card
(for operation of CD and video)

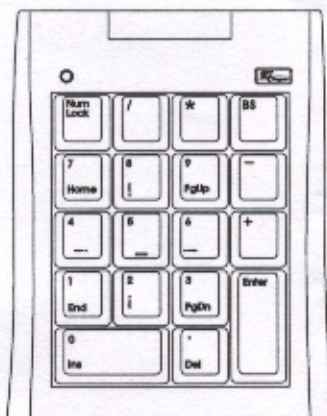
OS support

- USB adapted to
Windows 2000
Windows Me
Windows 98/98 SE
Windows XP
- PS/2 adapted to
Windows 2000
Windows Me
Windows 98/98 SE
Windows 95 OSR 2.1
Windows NT 4.0



- The outlook and specifications in the illustration may be different from the real keyboard.
- USB HUB function is option, it is based on USB protocol.

Parts of the keypad

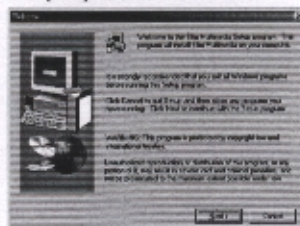


Directions

To install this product

To connect the Slim Mini Keyboard to the USB port of the personal computer or Notebook for the first time, please switch on the computer and start windows 98/Me/2000 first. And when the desktop screen is shown, connect the keyboard to the USB port of the computer system unit.

- In case of Windows 98
[New hardware] will show on the screen.
Click [Next] button on the screen.



Click the [Next] buttons as directed by the screen, and finally click [Finish].

[New hardware] will show twice, please repeat the operation.
Now you can use Slim Multimedia Keyboard.

- In case of Windows 2000
[New hardware] will show on the screen.
The display will disappear, and then you can use Slim Multimedia Keyboard.
- For PS/2 protocol will not disappear (New hardware) icon on the screen.

Channel Option

To eliminate any radio interference from each other, two radio channels are provided herein, we can use two sets of RF-525 wireless keypad simultaneously in a very closer distance.

Signal / Low voltage indicator

Besides indicator RF signal in normal operation, when battery voltage is lower than normal condition, LED will flash red color for you!

Specifications

- Interface of connection: USB or PS2
- Key indication: US/UK Version 88 key, Japan Version 90 key.
- Size: L290 X W135 X H20 mm
- Cable length: approximately 1.5 m

Compatibility	Windows 98/98 SE/ME/2000
Operation distance	Approximate 1 M
Frequency	27 Mhz
Channel	2
Cable length	0.8 M (receiver)
Batteries	AAA 2 purchase
Operation life	Approximate half a year under normal condition (Note 1)
Protocol	USB
Key number	18 keys
Dimensions	(L)133.50*(W)106.10*(H)23.65 mm

Note 1: With Alkaline battery, under normal use condition.

In the following cases, the repair will be charged even in the warranty period.

- (1) Malfunction or damage is due to misuse or improper alteration or repair.
- (2) Malfunction or damage is caused by the movement or fall during installation after the purchase.
- (3) Malfunction or damage is caused by a fire, salt, gas, earthquake, lightning, wind, water or other natural calamities, or abnormal voltage.
- (4) The manual is not presented.
- (5) Date of purchase, customer's name, name of the shop are not filled in or are altered.
- (6) Malfunction or damage is caused by other devices connected to RF-525.

To get the repair service, please disconnect RF-525 from other devices connected.

Date	Contents of service
Person in charge	
Person in charge	

This warranty is intended to provide free repair under the terms and period stated herein. Accordingly, this warranty shall not limit the legal rights entitled to the Customer. For more information concerning the repair after expiration of the warranty period, please contact retailer where you purchased this product.

FCC Information to the user

*This device complies with Part 15 of the FCC rule. Operation is subject to the following two conditions:

- (1) This device may not cause harmful interference, and
- (2) This device must accept any interference received, including interference that may cause undesired operation.*

Note: The manufacture is not responsible for any radio or TV interference caused by unauthorized modifications to this equipment. Such modifications could void the user's authority to operate the Equipment.