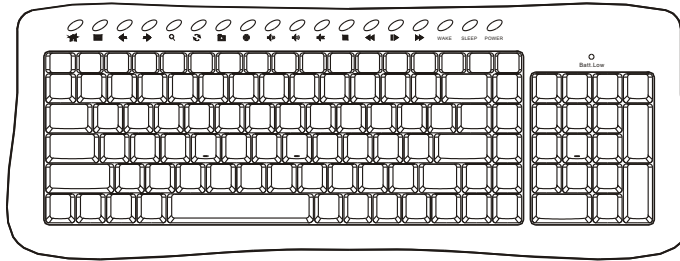


**User Manual****System requirements**

- ⇒ IBM or compatible PC
- ⇒ Windows Operating System
- ⇒ Pentium-equivalent processor or above
- ⇒ At least 10MB hard disk space
- ⇒ One available USB port

**OS support**

- ⇒ Windows 98SE
- ⇒ Windows ME
- ⇒ Windows 2000/NT
- ⇒ Windows XP

**Introduction**

Thank you for purchasing our cordless keyboard and Laser mouse. For your own safety, please read this manual thoroughly before using this product. After you have read this manual, please keep it in Place for reference when necessary.

**Contents in the package**

The following items are included in the package. Please make sure all items are accounted for as you open the package. If there was any item missing or damaged, please contact the store where the product was purchased or our support center.

- ⇒ Wireless Keyboard x 1
- ⇒ Wireless Laser Mouse x 1
- ⇒ USB 2.4GHz dongle receiver x 1
- ⇒ Installation CD x 1
- ⇒ Manual x 1
- ⇒ Alkaline batteries x4  
( 2 AAA for keyboard, 2 AAA for Mouse)

**Warning**

Any malfunction, damage or personal injury caused by the malfunctioning or damage of the user's personal computer or misuse of this product.

Do not dismantle, change or modify this product in any way.

**Warning**

Please do not use this product in ashy, wet, or oily environments. Failure to do so may shorten the life of this product and may cause bodily harm. Please keep this product as far away from Radio Frequency interruption areas as possible. This is not an outdoor product. Exposing this product to the elements may cause damages to the product and bodily harm to its users. Please do not use petroleum, benzene or thinner-based solution to clean this product.

**Laser Mouse**

International standards and safety. This Laser device complies with International Standard IEC 60825-1:2001-08, Class 1 Laser Product, and also complies with 21 CFR 1040.10 and 1040.11, except for deviations pursuant to Laser Notice No. 50, dated July 26, 2001: 1) Emission of a parallel beam of infrared user-invisible light; 2) Maximum Power of 716 microwatts CW, wavelength range 832-865 nanometers; 3) Operating temperature between 0°C ( 32°F ) to 40°C ( 104°F ).

**CAUTION:** This Laser device has no serviceable parts. Use of controls or adjustments or performance of procedures other than those specified herein may result in hazardous radiation exposure.

**Safety and Usage Guidelines**

- 1) Do not point infrared beam at eye.
- 2) In the absence of proper operation and if customer-initiated troubleshooting is unsuccessful, switch off device and call technical support.
- 3) Do not disassemble your product or expose it to liquid, humidity, moisture, or temperatures outside the specified operating range of 0°C ( 32°F ) to 40°C ( 104°F ). 4) If your product is exposed to out-of-range temperatures, switch it off and allow the temperature to return to the normal operating range.

**Specifications****Keyboard**

- ⇒ Dimensions: 430 x 162x 20 mm
- ⇒ Weight: 620 +/- 20g (with Battery)
- ⇒ Key Number: 104 Keys (By language)
- ⇒ Battery: 2 x AAA batteries
- ⇒ Battery Life: 3 Month (Base on average usage)
- ⇒ Channel: 78 Channels automatically switch.
- ⇒ ID: unique ID for each keyboard
- ⇒ Radio Frequency: 2.4 GHz
- ⇒ Hot Keys : previous page, next page, WWW home, stop, refresh, my favorite, search, e-mail, mute, previous, play/pause, next, stop, volume down, volume up, wake up, sleep, power

**Mouse**

- ⇒ Dimensions: L 105 x W 55.5 x H 35.5 mm
- ⇒ Weight: 80.7 +/- 25g (with Battery)
- ⇒ Key Number: 3 Keys  
(Wheel button on middle button)
- ⇒ Battery: 2 x AAA batteries
- ⇒ Battery Life: 1 Month (Base on average usage)
- ⇒ Channel: 78 Channels
- ⇒ ID: Unique ID for mouse
- ⇒ Radio Frequency: 2.4 GHz

**Dongle Receiver**

- ⇒ Dimensions: L70xW22.7xH12.3mm
- ⇒ Weight : 10.9g +/-25g
- ⇒ Interface: USB 1.1

**Installation Procedure**

Before installing this product please make sure you have one available USB port reserved for the dongle receiver.

**A. Setting up the Dongle Receiver**

1. Plug the dongle receiver (FIG. 3) into an available USB port.
2. Wait for Windows to install drivers for the dongle receiver, keyboard and mouse.
3. When the dongle receiver has been properly initialized, its LED light will stay alit.

This equipment has been tested and found to comply with the limits for a class B digital device, pursuant to part 15 of the FCC rules. These limits are designed to provide reasonable protection against harmful interference in a residential installation. This equipment generates, uses and can radiate radio frequency energy and, if not installed and used in accordance with the installation, may cause harmful interference to radio communication. However, there is no guarantee that interference will not occur in a particular installation. If this equipment does cause harmful interference to radio or television reception, which can be determined by turning the equipment off and on, the user is encouraged to try to correct the interference by one or more of the following measures:

- Reorient or relocate the receiving antenna
- Increase the separation between the equipment and receiver
- Connect the equipment into an outlet on a circuit different from that to which the receiver is connected

Consult the dealer or an experienced radio / TV technician for help

**B. Setting up the Keyboard and Mouse**

1. Open the battery compartment covers of the keyboard & mouse (FIG.1) (FIG.2) and insert the batteries. Make sure they are properly installed.
2. Replace the battery compartment covers.
3. Usually the keyboard and mouse have been set up in the factory. If the system cannot recognize the keyboard and mouse, please follow step 4~7 to bind keyboard and mouse.
4. Move the keyboard and mouse close to the receiver (within 30 cm).
5. Press the receiver ID button (FIG.3), then press the keyboard ID button (FIG.1).
6. Press the receiver ID button again, then press the mouse Reset button (FIG.2). The system will automatically recognize the Mouse.
7. The LED indicator on the receiver will turn green when the keyboard and mouse are connected and working properly.

**Battery Low**

1. Low-Battery is indicated by the illumination of the keyboard LED indicator "Batt.Low". Please replace the battery when the LED lights up.
2. Low-Battery is indicated by the illumination of the Mouse Scroll. Please replace the battery when the LED lights up.
3. We recommend using alkaline batteries for the keyboard.
4. You may need to reset the ID's after replacing new batteries for the keyboard and mouse.

**Warning**

Please be careful when resetting the ID's for the keyboard, mouse and dongle receiver. Objects with a sharp point may break and leave behind shards.

This device complies with part 15 of the FCC rules. Operation is subject to the following two conditions:

- (1) This device may not cause harmful interference and
- (2) This device must accept any interference received, including interference that may cause undesired operation

You are cautioned that changes or modifications not expressly approved by the party responsible for compliance could void your authority to operate the equipment.

1. This transmitter must not be co-located or operating in conjunction with any other antenna or transmitter.

## Function description

### Keyboard

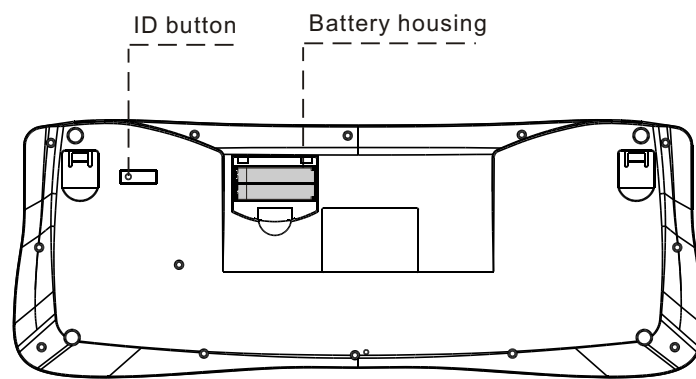
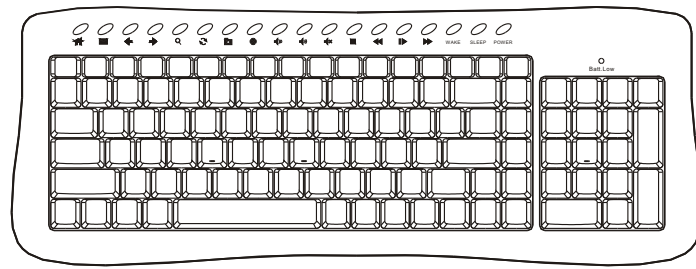
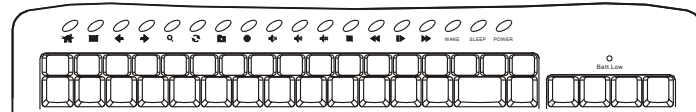


FIG.1

9

### Hotkey Functions

There are 18 built-in hotkeys for the product for quick access under the Windows operating system. Please refer to the following section on their functions.



- 🏠 Home page : Start the WWW browser.
- ✉ E-mail : Start the e-mail application.
- ⏪ Previous : Go back to the previous page of the internet.
- ➡ Next : Proceed to the next page of the internet.
- 🔍 Search : [Search] button of the internet browser.
- 🔄 Refresh : Reload web page.
- 📌 My favorite : [My favorite] button of the internet browser.
- 🛑 Stop : Stop download of the web page.
- 🔊 Volume down : Turn down the volume.
- 🔊 Volume up : Turn up the volume.
- 🔇 Mute : Toggle the on/off of the sound.
- 📀 Stop : Stop the play of the CD.
- ⏪ Previous : Return to the previous track of the CD.
- ⏸ Play/Pause : Toggle the play/pause of the CD.
- ➡ Next : Proceed to the next track of the CD.
- 🛌 SLEEP : Suspend Enter the Suspend mode.
- ⏴ Wake up: Wake up system when entering suspend mode.
- 🔌 POWER : Power off or Exit the computer.

10

### Mouse

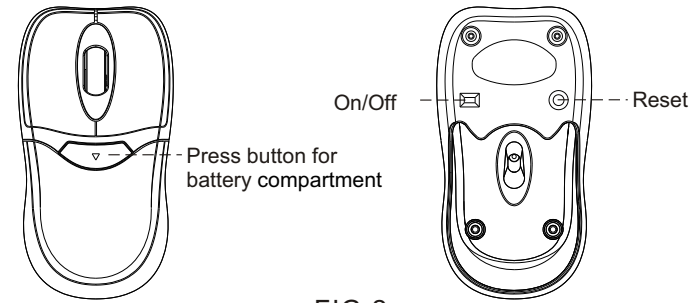


FIG.2

### Receiver

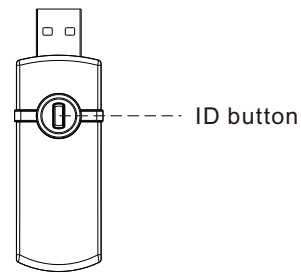


FIG.3

ID button on the keyboard (FIG. 1), receiver (FIG. 3), and the reset button on the mouse (FIG. 2) have the same function. If the RF device doesn't work properly, please press any keys after pressing ID button (FIG. 1) (FIG. 3) or reset button (FIG. 2) to connect the RF device.

### How to install the software

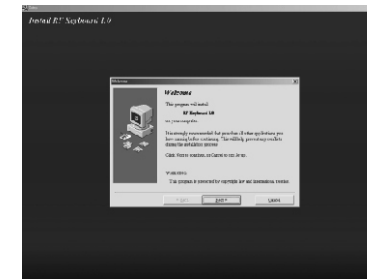
The CD in the package provide the Number Lock, Scroll Lock, Cap Lock , hotkey information OSD (On Screen Display) function, For Windows 98SE/ 2000/ ME /XP system , the OSD driver should be installed before use, and to use the functions of the hotkeys under Windows 98SE, you must install the software from the CD-ROM. Please follow the steps below on how to install the Multimedia Keyboard software to your system .

1. Insert the CD disk ,RF driver , into the CD-ROM drive.
2. The system will automatically run the setup.exe once after the disk is inserted, However , if the system . fails to perform the procedure , simply double- click on the setup.exe of CD Disk to continue the installation procedure.
3. Follow all the on-screen instructions.

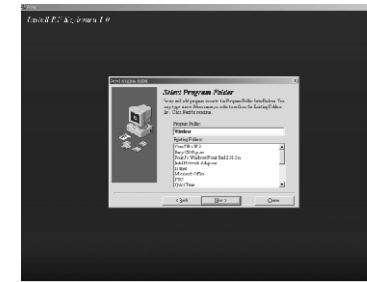


Select "Next" to install OSD driver.

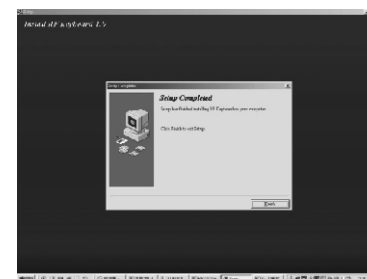
11



Select "Next"



Select "Next"



Select "Finish".

12



### Attention

If the install screen does not run automatically, open "[My Computer]->[CD-ROM]->[Autorun.exe] or [My Computer]->[CD-ROM]->[Driver]->[Hotkey Driver] or [LED OSD Driver]->setup.exe" .

When you restart the computer, onscreen Slim Multimedia will show on the screen, and Slim Multimedia icon will show in the taskbar.

You can drag the onscreen Slim Multimedia with the mouse to anywhere you want. To close onscreen Slim Multimedia, right click and left click [Finish] from the menu. When you right click Slim Multimedia icon, the menu will show and you can read the help or version information etc.

13

### Number Lock, Scroll Lock, Caps Lock indication software

After install keyboard status indication software, you will find 3 small icons in your task bar as follows:



When you lock up the Number pad, caps or scroll the light will show green color, otherwise it will show the gray color.

### Uninstall the Hot Key driver

Click [Start]->[Program]->[RF Status]-> uninstall, and uninstall according to the directions on the screen.

### Uninstall the OSD driver

Click [Start]->[Program]->[wireless]-> uninstall RF keyboard 1.0, and uninstall according to the directions on the screen.

14

This symbol on the product or in the instructions means that your electrical and electronic equipment should be disposed at the end of its life separately from your household waste. There are separate collection systems for recycling in the EU. For more information, please contact the local authority or your retailer where you purchased the product.

15

C701324004